

# BMJ Open

BMJ Open is committed to open peer review. As part of this commitment we make the peer review history of every article we publish publicly available.

When an article is published we post the peer reviewers' comments and the authors' responses online. We also post the versions of the paper that were used during peer review. These are the versions that the peer review comments apply to.

The versions of the paper that follow are the versions that were submitted during the peer review process. They are not the versions of record or the final published versions. They should not be cited or distributed as the published version of this manuscript.

BMJ Open is an open access journal and the full, final, typeset and author-corrected version of record of the manuscript is available on our site with no access controls, subscription charges or pay-per-view fees (<http://bmjopen.bmj.com>).

If you have any questions on BMJ Open's open peer review process please email [info.bmjopen@bmj.com](mailto:info.bmjopen@bmj.com)

# BMJ Open

## Limb Ischaemia Management collaboration (LIMb): study protocol for a prospective cohort study

Journal:	<i>BMJ Open</i>
Manuscript ID	bmjopen-2019-031257
Article Type:	Protocol
Date Submitted by the Author:	25-Apr-2019
Complete List of Authors:	Houghton, John; University of Leicester, Department of Cardiovascular Sciences Nduwayo, Sarah; University of Leicester, Department of Cardiovascular Sciences Nickinson, Andrew; University of Leicester, Department of Cardiovascular Sciences Payne, Tanya; University of Leicester, Department of Cardiovascular Sciences Sterland, Sue; University of Leicester, Department of Cardiovascular Sciences Nath, Mintu; University of Leicester, Department of Cardiovascular Sciences Gray, Laura; University of Leicester, Department of Health Sciences McMahon, Greg; University Hospitals of Leicester NHS Trust, Leicester Vascular Institute Rayt, Harjeet; University Hospitals of Leicester NHS Trust, Leicester Vascular Institute Singh, Sally; University Hospitals of Leicester NHS Trust, Cardiac/Pulmonary Rehabilitation Robinson, Thompson; University of Leicester, Department of Cardiovascular Sciences Conroy, Simon; University of Leicester, Department of Health Sciences Haunton, Victoria; University of Leicester, Department of Cardiovascular Sciences McCann, Gerry; University of Leicester, Department of Cardiovascular Sciences Bown, Matthew; University of Leicester, Department of Cardiovascular Sciences Davies, Robert; University Hospitals of Leicester NHS Trust, Leicester Vascular Institute Sayers, Rob; University of Leicester, Department of Cardiovascular Sciences
Keywords:	VASCULAR SURGERY, Peripheral Arterial Disease, Limb Salvage, Frailty, Delirium & cognitive disorders < PSYCHIATRY, Cardiovascular imaging < RADIOLOGY & IMAGING

1  
2  
3  
4  
5  
6  
7  
8  
9  
10  
11  
12  
13  
14  
15  
16  
17  
18  
19  
20  
21  
22  
23  
24  
25  
26  
27  
28  
29  
30  
31  
32  
33  
34  
35  
36  
37  
38  
39  
40  
41  
42  
43  
44  
45  
46  
47  
48  
49  
50  
51  
52  
53  
54  
55  
56  
57  
58  
59  
60



1  
2  
3  
4  
5  
6  
7  
8  
9

## **Title: Limb Ischaemia Management collaboration (LIMb): study protocol**

### **for a prospective cohort study**

10  
11  
12  
13  
14  
15  
16  
17

**Authors:** J.S.M. Houghton<sup>1,2,3</sup> (corresponding author), S. Nduwayo<sup>1,2,3</sup>, A. Nickinson<sup>1,2,3</sup>, T. J. Payne<sup>1,3</sup>, S. Sterland<sup>1,3</sup>, M. Nath<sup>1,3</sup>, L.J. Gray<sup>4</sup>, G. McMahon<sup>1,2</sup>, H.S. Rayt<sup>1,2</sup>, S. Singh<sup>2</sup>, T. Robinson<sup>1,3</sup>, S. P. Conroy<sup>4</sup>, V.J. Haunton<sup>1</sup>, G.P. McCann<sup>1,3</sup>, M.J. Bown<sup>1,2,3</sup>, R.S.M. Davies<sup>1,2</sup> and R.D. Sayers<sup>1,2,3</sup>

18  
19  
20  
21  
22  
23  
24  
25  
26  
27

**Author affiliations:** <sup>1</sup>Department of Cardiovascular Sciences, University of Leicester, <sup>2</sup> Leicester Vascular Institute, University Hospitals of Leicester NHS Trust, <sup>3</sup>National Institute for Health Research Leicester Biomedical Research Centre –The Glenfield Hospital, Leicester, and <sup>4</sup>Department of Health Sciences, University of Leicester, Leicester, UK

28  
29  
30  
31  
32

**Keywords:** Peripheral arterial disease, Limb salvage, Frailty, Cognitive dysfunction, Myocardial perfusion imaging, Biomarkers

33  
34  
35  
36  
37  
38  
39  
40

**Correspondence to:** Mr John Houghton, Cardiovascular Research Centre, University of Leicester, Glenfield Hospital, Groby Road, Leicester, LE3 9QP (email: john.houghton@nhs.net)

41  
42  
43  
44  
45  
46  
47  
48

**Author contributions:** J. Houghton, S. Nduwayo, T. Payne, M. Nath, L. Gray, S. Conroy, V. Haunton, G. McCann, R. Davies and R. Sayers have all contributed to writing the protocol. All authors have been involved in developing the study design and revising the protocol.

49  
50  
51  
52  
53  
54  
55  
56

**Acknowledgements:** The authors would like to thank Natasha Bryant for the development of the data capture and management procedures, and Gaurav Gulsin for providing the research images for Figure 2.

57  
58  
59  
60

**Data sharing statement:** Anonymised dataset will be available on request to the Chief Investigator (R. Sayers).

1  
2  
3 **Funding statement:** The LIMb study and LIMb investigators J. Houghton, A. Nickinson, S.  
4  
5 Nduwayo and T. Payne are funded, and R. Sayers part-funded, by a charitable donation from  
6  
7 the George Davies Charitable Trust (Registered Charity Number: 1024818) and supported by  
8  
9 the NIHR Leicester Biomedical Research Centre. G. McCann is funded by a NIHR Research  
10  
11 Professorship (2017-08-ST2-007). T. Robinson is an NIHR senior Investigator.  
12  
13  
14  
15

16 **Competing interests statement:** R. Davies has acted as a speaker for Gore Medical and has  
17  
18 received educational grants from Terumo/Aortic outside the submitted work.  
19  
20

21 **Study protocol**  
22  
23  
24  
25  
26  
27  
28  
29  
30  
31  
32  
33  
34  
35  
36  
37  
38  
39  
40  
41  
42  
43  
44  
45  
46  
47  
48  
49  
50  
51  
52  
53  
54  
55  
56  
57  
58  
59  
60

## **Abstract**

### **Introduction**

Severe limb ischaemia (SLI) is the end-stage of peripheral arterial occlusive disease where the viability of the limb is threatened. Around 25% of patients with SLI will ultimately require a major lower limb amputation which has a substantial adverse impact on quality of life. A newly established rapid-access vascular limb salvage clinic and modern revascularisation techniques may reduce amputation rate. The aim of this study is to investigate the 12-month amputation rate in a contemporary cohort of patients and compare this to a historical cohort. Secondary aims are to investigate the use of frailty and cognitive assessments, and cardiac MRI in risk-stratifying patients with SLI undergoing intervention and establish a biobank for future biomarker analyses.

### **Methods & analysis**

This single-centre prospective cohort study will recruit patients aged 18-110 years presenting with SLI. Those undergoing intervention will be eligible to undergo additional venepuncture (for biomarker analysis) and/or cardiac MRI. Those aged  $\geq 65$  years and undergoing intervention will also be eligible to undergo additional frailty, cognitive and delirium assessments. Patients will be followed-up at 12 and 24 months and subsequently via data-linkage with NHS digital records to 10 years post-recruitment. Those undergoing cardiac MRI and/or frailty assessments will receive additional follow-up during the first 12 months to investigate for peri-operative myocardial infarction and frailty related outcomes, respectively. A sample size of 420 patients will be required to detect a 10% reduction in amputation rate in comparison to a similar sized historical cohort, with 90% power and 5%

1  
2  
3 type-I error rate. Statistical analysis of this comparison will be by adjusted and unadjusted  
4  
5 logistic regression analyses.  
6  
7

### 8 **Ethics & dissemination**

9  
10  
11 Ethical approval for this study has been granted by the UK National Research Ethics Service  
12  
13 (19/LO/0132). Results will be disseminated to participants, via National and International  
14  
15 scientific meetings, peer-reviewed medical journals and social media.  
16  
17  
18  
19  
20  
21  
22

23 Abstract word count: 300

24  
25  
26 Manuscript word count: 3,960  
27  
28  
29  
30  
31  
32  
33  
34  
35  
36  
37  
38  
39  
40  
41  
42  
43  
44  
45  
46  
47  
48  
49  
50  
51  
52  
53  
54  
55  
56  
57  
58  
59  
60

## **Article summary**

### **Strengths & limitations of this study**

- This prospective study of a contemporary cohort of patients with severe limb ischaemia (including both patients with and without diabetes) will provide a valuable update to observational evidence.
- The inclusion of patients lacking capacity reduces potential selection bias.
- The use of comprehensive assessments of frailty syndromes and cardiac MRI may provide valuable additional strategies to assess risk.
- The single-centre study design will limit the generalisability of its results.
- The retrospective collection of historical control data and observational nature of the study will limit the strength of evidence of the results.



## **Introduction**

Peripheral arterial occlusive disease (PAOD) is a chronic condition caused by atherosclerosis of arteries supplying the lower limbs. In high-income countries its prevalence is over 10% in those aged over 65.<sup>1</sup> PAOD is often asymptomatic but as the disease progresses patients may develop symptoms such as intermittent claudication.<sup>2</sup> Severe limb ischaemia (SLI) is the end-stage of PAOD in which the viability of the limb is threatened due to the degree of arterial disease and subsequent ischaemia in the peripheral tissues, and is characterised by ischaemic rest pain and tissue necrosis, leading to ulceration and gangrene.<sup>3</sup> Treatment options include open surgical and endovascular revascularisation, with or without surgical debridement of affected tissues and/or amputation of toes. In some patients revascularisation is not possible and primary major lower limb amputation, or amputation after failed attempted revascularisation, is required.<sup>4</sup>

Lower limb amputation is a life-changing tragedy for the patient and a huge financial burden to the NHS. Between 2003 and 2013 over 4000 major lower limb amputations were performed each year in England alone.<sup>5</sup> With the rising prevalence of diabetes and diabetic foot disease, a diabetes-related major lower limb amputation is performed every 30 seconds worldwide and over 7000 diabetes-related major and minor amputations are now performed each year in England and Wales.<sup>6,7</sup> Major lower limb amputation negatively affects quality of life due to its significant impact on mobility, independence, social isolation and ability to carry out activities of daily living.<sup>8</sup> Only around 20% of those undergoing an amputation for PAOD are independently ambulant one-year post procedure.<sup>9,10</sup>

### Frailty, cognitive impairment and delirium

A major challenge in managing patients with SLI is decision making regarding optimum treatment strategies. As well as anatomical considerations regarding revascularisation strategy, an accurate assessment of both the risk of treatment failure and morbidity associated with a procedure should be taken into account. This is particularly challenging in patients with SLI as they are often elderly with multiple comorbidities.<sup>11</sup> Frailty is a distinct health state and is increasingly recognised as a major contributor to adverse outcomes in surgical patients.<sup>12</sup> Frailty is defined as “a medical syndrome with multiple causes and contributors that is characterized by diminished strength, endurance, and reduced physiologic function that increases an individual’s vulnerability for developing increased dependency and/or death”.<sup>13</sup> Around 10% of people aged over 65 years are frail, increasing to more than 30% of those aged over 85, whilst prevalence of frailty in patients with SLI may be over 50%.<sup>11 14 15</sup> Frail patients are less able to respond to acute stressors, such as major surgery, and are therefore more susceptible to adverse health outcomes such as mortality and post-operative complications.<sup>16 17</sup> Multiple validated tools used to assess patients for frailty have been developed which can be utilised in pre-operative assessment.<sup>13 18</sup>

Both cognitive impairment and sarcopenia are also of interest in this cohort as they are associated with frailty, vascular disease and vascular risk factors.<sup>19-21</sup> Cognitive impairment, encompassing a spectrum of diseases from mild cognitive impairment to dementia, manifests as memory problems, poor concentration and difficulty making decisions about things affecting everyday life. Sarcopenia is a “progressive and generalised skeletal muscle disorder that is associated with increased likelihood of adverse outcomes” and defined as low muscle strength plus low muscle quantity or quality and/or low physical performance.<sup>22</sup> Sarcopenia has been assessed both clinically and radiologically (using cross-sectional

1  
2  
3 imaging) in vascular patients.<sup>23 24</sup> Frailty, cognitive impairment and sarcopenia have been  
4  
5 implicated in worse outcome following vascular surgery.<sup>17</sup> Post-operative delirium is one  
6  
7 such outcome which has been shown to be associated both with frailty in vascular patients  
8  
9 and worse short- and long-term outcome following vascular surgery.<sup>25 26</sup>  
10  
11

### 12 13 Coronary artery disease (CAD)

14  
15 CAD is a highly prevalent and major co-morbidity of patients with PAOD. Very few vascular  
16  
17 surgery patients have normal coronary arteries on coronary angiography.<sup>27</sup> Coronary  
18  
19 angiography has also shown around 60% of vascular surgery patients have severe CAD  
20  
21 (>70% stenosis), and in those without symptoms or history of ischaemic heart disease  
22  
23 undergoing vascular surgery, around 70% have evidence of CAD, half of whom have severe  
24  
25 disease.<sup>27 28</sup> Patients with PAOD have a 20-60% increased risk for myocardial infarction (MI)  
26  
27 and a two- to six-fold increased risk of death due to CAD related events.<sup>29</sup> Peri-operative MI  
28  
29 (based on elevated troponin) has been reported in up to 24% of vascular patients, with 82%  
30  
31 of these not exhibiting symptoms.<sup>30</sup>  
32  
33  
34  
35  
36  
37

38  
39 Cardiac magnetic resonance imaging (MRI) is the most sensitive imaging modality for the  
40  
41 detection of myocardial necrosis/infarct and is highly accurate for the detection of  
42  
43 reversible ischaemia in a single examination.<sup>31-34</sup> Modern software allows images to be  
44  
45 acquired completely free-breathing, using motion-correction techniques and highly  
46  
47 accelerated sequences, which is particularly important for the frail or breathless patient.<sup>35 36</sup>  
48  
49 In addition myocardial blood flow can be quantified fully automatically within minutes of  
50  
51 acquisition allowing measurement of stress and rest myocardial blood flows and perfusion  
52  
53 reserve.<sup>37</sup> The identification of significant cardiac disease in these patients may allow  
54  
55  
56  
57  
58  
59  
60

1  
2  
3 further risk assessment and stratification to ensure that each patient has an optimum  
4  
5 treatment plan.  
6  
7

## 8 **Rationale**

9  
10 The most widely cited estimates of outcomes in patients with SLI are from the Trans-Atlantic  
11  
12 Consensus Statement II (2007) which state that 50% will initially undergo revascularisation  
13  
14 and 25% primary amputation, and at one-year 30% will be alive and have had an  
15  
16 amputation whilst 25% will have died.<sup>4</sup> In recent years there has been a marked  
17  
18 demographic shift with increasing prevalence of diabetes among patients with SLI and  
19  
20 intervening in older, frailer patients.<sup>11 38</sup> Whilst there has been little change in  
21  
22 recommended medical therapy of PAOD,<sup>4 39</sup> new endovascular technologies and improved  
23  
24 techniques such as ultra-distal bypass and Covered Endovascular Revascularisation of Aortic  
25  
26 Bifurcation allow increasingly aggressive revascularisation strategies.<sup>40-42</sup> The Leicester  
27  
28 Vascular Institute (based at Glenfield Hospital, University Hospitals of Leicester NHS Trust) is  
29  
30 a tertiary referral vascular unit providing all vascular services for Leicestershire and Rutland,  
31  
32 comprising a diverse population of approximately 1.1 million. A recently established  
33  
34 rapid-access limb salvage clinic aims to improve outcomes in patients with SLI and  
35  
36 ultimately reduce the need for major lower limb amputation in line with recent guidelines  
37  
38 from The Vascular Society of Great Britain and Ireland.<sup>43</sup> A contemporary cohort study will  
39  
40 provide useful evidence of outcomes in the context of current SLI demographics,  
41  
42 revascularisation strategies and improved care pathways.  
43  
44  
45  
46  
47  
48  
49  
50  
51  
52  
53  
54  
55  
56  
57  
58  
59  
60

## **Study aims**

### Primary aim

The primary aim of this study is to determine the proportion of patients with SLI undergoing major lower limb amputation within 12 months of presentation. The primary hypothesis is that contemporary amputation rate is lower than historical data.

### Secondary aims

Secondary aims are to assess clinically important short- ( $\leq 3$ -months), medium- (3-12 months) and long-term ( $>12$  months) outcomes in those undergoing and not undergoing amputation. We also aim to determine prevalence and degree of frailty, cognitive impairment, and cardiac disease (detected by stress MRI), as well as establish a biobank for future analysis of biomarkers, in those patients undergoing procedures for SLI. This may allow risk stratification, and also to investigate whether patients with a higher risk of poor peri-operative outcome or long-term worse prognosis are undergoing procedures with increased risk of morbidity and mortality.

## **Methods & analysis**

### **Study design**

This study will be a single-centre prospective observational cohort study undertaken at the Leicester Vascular Institute. Recruitment will continue for a period of 2 years with a total of 10 years follow-up.

### Primary outcome measure

The primary outcome measure of the study is major amputation rate.

## Secondary outcome measures

Secondary outcome measures for short- and medium-term follow-up data include, but not limited to: quality of life, functional performance, anxiety and depression, morbidity, cognitive decline, frailty and mobility as well as short- ( $\leq 3$  months), medium- (3-12 months) and long-term ( $>12$  months) mortality.

## **Study participants and eligibility**

### Eligibility & consent

All patients with SLI attending the Leicester Vascular Institute will be screened for their eligibility. Those eligible will be given verbal and written information detailing the nature of the study and time to decide whether they want to participate. Patients will be eligible for inclusion up until the point they undergo an intervention. Full written informed consent will be taken for patients agreeing to participate in the study. Consent will be gained to allow investigators to undertake additional assessments not routinely performed in this cohort of patients, as well as to review medical records for both baseline data and outcomes measured at various points during the 24 months following recruitment. Consent will also be taken for data-linkage with NHS digital records for long-term outcomes at 10 years post recruitment.

The researchers will have primary responsibility for assessing the capacity of the individual to participate in research according to the Mental Capacity Act 2005. Given the low risk and burden of this study to patients, it is reasonable to seek consultee consent in patients who do not have capacity. A 'hierarchy' of consent will be followed; this approach to the enrolment process has successfully been used in recent NIHR-funded studies.<sup>44</sup>

- 1  
2  
3 1. Potential patients with capacity are recruited, provided they are willing to provide  
4  
5 consent.  
6  
7
- 8 2. Where patients do not have capacity, they may be recruited using consultee  
9  
10 agreement (such as an unpaid carer or next of kin) under section 31(2) of the Mental  
11  
12 Capacity Act 2005.  
13
- 14 3. Checks will be made with the potential patient's GP or hospital records that there is  
15  
16 no relevant advance decision relating to research under section 33(2).  
17  
18
- 19 4. We will use a consultee under section 32(3) whenever possible.  
20  
21

22  
23 Personal consultees will be provided with verbal and written information detailing their role  
24  
25 and the nature of the study. They will be given time to decide whether they feel the patient  
26  
27 would want to participate in the study and have an opportunity to ask questions prior to  
28  
29 completing the personal consultee declaration form. Both the clinical and research team will  
30  
31 endeavour to identify a potential personal consultee for any eligible patient that lacks  
32  
33 capacity, however if one cannot be identified the patient will not be invited to participate in  
34  
35 the study.  
36  
37  
38  
39

#### 40 41 Primary cohort 42

43 All patients attending the Leicester Vascular Institute with a diagnosis of SLI will be  
44  
45 considered for inclusion to the study. SLI is defined as pain at night or at rest and/or  
46  
47 ulceration or gangrene in the affected limb(s) for a minimum of two weeks attributed to  
48  
49 confirmed PAOD.<sup>45</sup>  
50  
51

#### 52 53 Historical controls 54

55 A retrospective cohort of historical controls with SLI will be identified for a 24 month period  
56  
57 (2013-2015) prior to establishing the Leicester Vascular Institute. Approximately 420  
58  
59  
60

1  
2  
3 patients with a primary admission diagnosis of SLI will be identified from local coding data  
4  
5 using the ICD-10 code I70.2. Hospital paper and electronic records will be interrogated to  
6  
7 identify baseline characteristics and outcomes including major amputation. This will be  
8  
9 cross-referenced against Trust Hospital Episode Statistics data for major amputations (OPCS-  
10  
11 4 code X09) to ensure accuracy.  
12  
13  
14  
15

### 16 Additional assessments

17  
18 Patients recruited to the primary cohort who are offered intervention (minor  
19  
20 amputation/debridement, revascularisation or primary major amputation) will also be given  
21  
22 the opportunity to participate in additional assessments, depending on them meeting the  
23  
24 inclusion/exclusion criteria. These additional assessments will investigate frailty and  
25  
26 cognitive impairment, and cardiac dysfunction on short- and medium-term outcomes.  
27  
28  
29

30 Patients undergoing intervention will also be eligible for venepuncture to collect serum and  
31  
32 plasma samples to establish a biobank for future biomarker analyses. Patients who are  
33  
34 treated medically with no planned intervention will be eligible for recruitment to the  
35  
36 primary cohort only.  
37  
38  
39  
40

### 41 Inclusion & Exclusion criteria

42  
43 Full inclusion and exclusion criteria are detailed in Table 1.  
44  
45  
46  
47  
48  
49  
50  
51  
52  
53  
54  
55  
56  
57  
58  
59  
60



Table 1: Inclusion &amp; Exclusion criteria

Primary Cohort	
<b><i>Inclusion criteria:</i></b>	<b><i>Exclusion criteria:</i></b>
<ul style="list-style-type: none"> <li>Patients presenting to the Leicester Vascular Institute with SLI</li> <li>Patients aged 18 – 110 years</li> </ul>	<ul style="list-style-type: none"> <li>SLI not caused by PAOD</li> <li>Patients undergoing intervention during their index presentation prior to recruitment</li> <li>Patients lacking capacity with no accompanying next of kin, relative, partner or friend who can act as a personal consultee</li> <li>Patients who cannot read, write or understand English</li> <li>Any significant disease or disorder which may either put the patients at risk because of participation in the study or may influence the results of the study or the patient's ability to participate in the study</li> </ul>
Frailty & cognitive impairment additional assessments	
<b><i>Inclusion criteria:</i></b>	<b><i>Exclusion criteria:</i></b>
<ul style="list-style-type: none"> <li>Patients recruited to the primary cohort in whom a decision has been made to undergo an intervention for SLI</li> <li>Patients aged &gt;65 years</li> </ul>	<ul style="list-style-type: none"> <li>No additional exclusion criteria</li> </ul>
Cardiac MRI additional assessments	
<b><i>Inclusion criteria:</i></b>	<b><i>Exclusion criteria:</i></b>
<ul style="list-style-type: none"> <li>Patients recruited to the primary cohort in whom a decision has been made to undergo an intervention for SLI</li> </ul>	<ul style="list-style-type: none"> <li>Absolute contraindications to cardiac MRI:               <ul style="list-style-type: none"> <li>Pregnancy; non MR safe PPM/ICD; non MR safe intra-auricular implants; non MR safe intracranial clips; severe claustrophobia; unstable angina</li> </ul> </li> <li>Contraindication to gadolinium contrast agent:               <ul style="list-style-type: none"> <li>Known adverse reaction; chronic renal failure (eGFR &lt;30mL/min/1.73m<sup>2</sup>)</li> </ul> </li> <li>Patients lacking capacity to consent for cardiac MRI</li> </ul>
Biomarkers additional assessments	
<b><i>Inclusion criteria:</i></b>	<b><i>Exclusion criteria:</i></b>
<ul style="list-style-type: none"> <li>Patients recruited to the primary cohort in whom a decision has been made to undergo an intervention for SLI</li> </ul>	<ul style="list-style-type: none"> <li>No additional exclusion criteria</li> </ul>

eGFR, Estimated glomerular filtration rate; ICD, Implantable cardioverter-defibrillator; MRI, Magnetic resonance imaging; PAOD, Peripheral arterial occlusive disease; PPM, Permanent pacemaker; SLI, Severe limb ischaemia.

## Study procedures

A study overview with potential recruitment numbers (based on local audit data 2018/19) is detailed in Figure 1. Eligible patients may be recruited to multiple additional assessments dependent upon their consent.

### Primary cohort

Baseline data will be collected from the standard admission proforma as part of routine attendance at the Leicester Vascular Institute, which includes:

- Presenting complaint
- Past medical history/comorbidities
- Social history
- Current regular medications
- Observations
- Examination findings (lower limb pulses; Society of Vascular Surgery Wound, Ischaemia, foot Infection [WIFI] score;<sup>38</sup> Site, Ischaemia, Neuropathy, Bacterial infection, And Depth [SINBAD] score<sup>46</sup>)
- Ankle brachial pressure index (ABPI)
- Lower limb arterial duplex report
- Clinical Frailty Scale (CFS)<sup>47</sup>
- Vascular Quality of Life (VascuQoL) Questionnaire<sup>48</sup>

The following study data that will be collected in addition to routine clinic practice include:

- Barthel Activities of Daily Living (ADL) index<sup>49</sup>
- Hospital Anxiety and Depression Scale (HADS)<sup>50</sup>

1  
2  
3 At 12 months (+/- 1 month) patients will receive telephone follow-up to collect CFS, Barthel  
4  
5 ADL index, HADS, VascuQol and limb salvage data. These same data will be collected again  
6  
7 at 24 months (+/- 1 month). Electronic hospital records will be interrogated to collect data  
8  
9 regarding procedures patients have undergone for SLI during the 12 months post  
10  
11 recruitment.  
12  
13  
14  
15

16 A long-term data-linkage process will be employed once the first patient has been recruited.  
17  
18 This will provide mortality data for patients in the primary cohort and aid in project  
19  
20 management (i.e. not sending follow-up requests to deceased patients). After the two-year  
21  
22 follow-up period, patients in the primary cohort will be linked with NHS digital records to  
23  
24 provide long-term follow-up data for a total 10 year period following recruitment.  
25  
26  
27  
28

### 29 Frailty & cognitive impairment additional assessments

30  
31 Additional data collected at baseline will include:  
32  
33

- 34 • Edmonton Frail Scale (EFS)<sup>51</sup>
- 35 • Montreal Cognitive Assessment (MoCA)<sup>52</sup>
- 36 • Short Physical Performance Battery (SPPB)<sup>53</sup>
- 37 • Grip strength (bilateral) measured using a dynamometer
- 38 • Single Question in Delirium (SQiD)<sup>54</sup>
- 39 • 4 'A's Test (4AT) for rapid delirium screening<sup>55</sup>
- 40
- 41
- 42
- 43
- 44
- 45
- 46
- 47
- 48
- 49

50 At 24 and 72 hours post-operatively patients will undergo screening for delirium using both  
51  
52 the SQiD and 4AT. Patients who have been discharged from hospital prior to 24 and/or 72  
53  
54 hours post-operatively will undergo screening for delirium via telephone using the SQiD only  
55  
56 (asking a relative or carer).  
57  
58  
59  
60

1  
2  
3 At 3 months (+/- 1 month) and 12 months (+/- 1 months) patients will attend a follow-up  
4  
5 clinic where the following assessments will be undertaken: CFS, EFS, MoCA, SPPB, grip  
6  
7 strength, Barthel ADL index, VascuQoL and HADS. No additional telephone follow-up will be  
8  
9 required at 12 months as all relevant assessments will be undertaken during the 12 month  
10  
11 clinic visit.  
12  
13

14  
15  
16 For patients who agree to participate in the frailty and cognitive impairment additional  
17  
18 assessment, advanced consent will be gained to undertake delirium assessments post-  
19  
20 operatively. It is possible that during the course of the follow-up period, patients may lose  
21  
22 capacity before completing the study follow-up. Accordingly, advanced consent will be  
23  
24 gained at the point of recruitment to undertake all the required assessments during follow-  
25  
26 up. In the event that a patient loses capacity during the course of the study, a personal  
27  
28 consultee will be sought to both confirm ongoing participation in the study and help  
29  
30 complete the follow-up assessments.  
31  
32  
33  
34

### 35 36 Cardiac MRI additional assessments 37

38 The cardiac MR scan will be performed on a 3T scanner (Siemens Skyra or Vida) using a 32ch  
39  
40 cardiac coil. The MRI protocol is outlined in Figure 2 and will include<sup>56</sup>:  
41  
42

- 43  
44 i. Left ventricular (LV) function cine imaging
- 45  
46 ii. Adenosine and/or dobutamine stress and rest perfusion imaging
- 47  
48 iii. Late gadolinium enhancement
- 49  
50 iv. If time permits and the patient is able to tolerate the scan, additional sequences  
51  
52 such as aortic distensibility and angiography may be performed.  
53  
54

55  
56  
57 Patients will be fully counselled about the procedure (which may cause slight discomfort  
58  
59 and claustrophobia) and written consent gained prior to the MRI scan. A standard MRI  
60

1  
2  
3 safety questionnaire will be completed prior to the scan to ensure the safety requirements  
4  
5 are satisfied. A 12-lead ECG will be performed within 72 hours prior to the cardiac MRI scan.  
6  
7

8  
9 Two intravenous cannulae will be inserted for administration of adenosine or dobutamine  
10  
11 and gadolinium contrast agent. Patients may receive intravenous sedation if they are  
12  
13 anxious or claustrophobic. Adenosine will be administered at 140µg/kg/min, limited to 3-4  
14  
15 minutes to minimise patient discomfort. If there is no haemodynamic response and/or the  
16  
17 patient does not experience any effects, the infusion may be prolonged or the dose may be  
18  
19 increased incrementally to 210µg/kg/min (at the discretion of the supervising physician). In  
20  
21 patients with an absolute contraindication to adenosine (severe asthma/COPD, high degree  
22  
23 of atrioventricular block, theophylline usage) dobutamine/atropine will be administered as  
24  
25 the stressor agent. The dose of dobutamine will commence at 20µg/kg/min for those with  
26  
27 preserved ejection (10µg/kg/min for patients with significant LV dysfunction) and increased  
28  
29 incrementally until age-predicted target heart rate is reached ( $\geq 85\%$  of 220-age beats per  
30  
31 minute). It is anticipated the maximum dose administered will be 30µg/kg/min.<sup>57</sup> Atropine,  
32  
33 0.6-1.8mg, may be used to achieve predicted maximum heart rate. Chest pain, arrhythmias  
34  
35 and induction of wall motion abnormality are indications to stop the infusion and a patient's  
36  
37 heart rate and blood pressure will be monitored closely. Patients will be reassured  
38  
39 throughout and it will be made clear they can stop the MRI scan at any time.  
40  
41  
42  
43  
44  
45  
46  
47

48  
49 Cardiac MR analysis will be both qualitative and quantitative. Local on-site reporting will  
50  
51 include any regional motion abnormality by visual analysis using the 17-segment AHA  
52  
53 model,<sup>58</sup> and each segment will be scored as 0 (normal), 1 (mild hypokinesia), 2 (severe  
54  
55 hypokinesia), 3 (akinesia), or 4 (dyskinesia). Hypoperfusion (ischaemia) will be assessed by a  
56  
57 visual comparison of stress and rest cardiac MR perfusion scan in 16 of the 17 AHA model  
58  
59  
60

1  
2  
3 segments (excluding the apical cap segment) with scores of: 0 (normal), 1 (equivocal), 2  
4 (subendocardial ischaemia), or 3 (transmural ischaemia). Any infarct (scar) will be reported  
5  
6 based on the late gadolinium-enhancement images (17 segment AHA model) with scores of  
7  
8 0 (none), 1 (1-25%), 2 (26-50%), 3 (51-75%), or 4 (>75%) for each segment. The MRI results  
9  
10 will remain blinded unless there is a clinical indication for reversible ischaemia testing. In  
11  
12 such cases a limited clinical report including details of LV function, ischaemia and scar tissue  
13  
14 will be available to the clinical team if indicated, to inform decision making.  
15  
16  
17

18  
19  
20  
21 Patients who undergo open surgical revascularisation or major lower limb amputation  
22  
23 (major surgery) will undergo an additional follow-up scan at 2-4 months post-operatively to  
24  
25 investigate for incidence of peri-operative myocardial infarction.<sup>59</sup>  
26  
27

28  
29 All patients undergoing cardiac MRI will be consented to have an additional axial image at  
30  
31 the level of the 3<sup>rd</sup> lumbar vertebrae during the initial scan only, which will be performed  
32  
33 before the cardiac sequences. This will image psoas, paraspinal and abdominal wall muscles  
34  
35 allowing the total skeletal muscle areas to be measured as assessments of sarcopenia.<sup>60</sup>  
36  
37

#### 38 39 Biomarkers additional assessments

40  
41  
42 Venepuncture will be performed by a qualified member of the research team and blood  
43  
44 collected using an S-Monovette® 9ml K2 EDTA blood tube and an S-Monovette® 7.5ml  
45  
46 Serum Gel blood tube with the aim of collecting 6 x 500µL aliquots of both serum and  
47  
48 plasma. All samples will be stored at the NIHR Leicester Biomedical Research Centre located  
49  
50 at Glenfield Hospital for subsequent analysis. Consent will be gained to use these samples in  
51  
52 future biomarker analyses. All samples will be anonymously data-linked with clinical  
53  
54 baseline and outcome data for patients recruited to the biomarkers additional assessments.  
55  
56  
57  
58  
59  
60

1  
2  
3 Study assessment schedule  
4

5 An overview of study procedures and assessment schedule is detailed in Table 2.  
6  
7  
8  
9  
10  
11  
12  
13  
14  
15  
16  
17  
18  
19  
20  
21  
22  
23  
24  
25  
26  
27  
28  
29  
30  
31  
32  
33  
34  
35  
36  
37  
38  
39  
40  
41  
42  
43  
44  
45  
46  
47  
48  
49  
50  
51  
52  
53  
54  
55  
56  
57  
58  
59  
60

For peer review only

Table 2: Study procedures and patient assessment schedule

Procedure/assessment	Baseline	24 hrs post intervention	72 hrs post intervention	3 month F/U visit	12 month F/U visit	12 month telephone F/U	24 month telephone F/U
Patient consent/ consultee declaration	•						
Clinical frailty scale	•			•	•	•	•
Barthel Index	•			•	•	•	•
VascuQoL	•			•	•	•	•
HADS	•			•	•	•	•
Edmonton frail scale	•			•	•		
MoCA	•			•	•		
SPPB	•			•	•		
Grip strength	•			•	•		
SQID	•	•	•				
4AT	•	•	•				
Cardiac MRI	•			•			
Blood sample collection	•						

4AT, 4 'A's Test (4AT) for rapid delirium screening; HADS, Hospital Anxiety and Depression Scale; MoCA, Montreal Cognitive Assessment; MRI, Magnetic Resonance Imaging; SQiD, Single Question in Delirium; VascuQoL, Vascular Quality of Life questionnaire.

Additional assessments: **Frailty & cognitive**; **Cardiac MRI**; **Biomarkers**.



### Definition of end of study

The end of study date is defined by the date the long-term outcomes are collected from NHS digital, which will be ongoing for 10 years following the date the final patient is recruited to the primary cohort.

### Discontinuation/withdrawal from the study

Each patient, or personal consultee, has the right to withdraw from the study at any time and this will be explained at recruitment and each follow-up contact. The reason for withdrawal (if given) will be recorded in the patient's medical records and collected as part of the research data. Patient data collected up to the point of withdrawal will be used in the analysis unless the patient (or personal consultee) has withdrawn consent for all data to be used. Long-term data will be collected via data-linkage unless consent is withdrawn.

### Study patient and public involvement (PPI) group

A PPI group involving patients, and their carers, with experience of being treated for SLI at the Leicester Vascular Institute has been established for this study. Members of the PPI group have been directly involved in the development of the study, the information material and provided insight on the burden of the study from a patient's perspective. The group will continue to meet throughout the duration of the study to be informed of the progress and have the opportunity to advise regarding the ongoing delivery of the study.

### **Data & analysis**

Study data will be collected and managed using REDCap (Research Electronic Data Capture) hosted at the University of Leicester.<sup>61</sup> REDCap is a secure, web-based application designed to support data capture for research studies.

1  
2  
3 A full statistical analysis plan will be written and agreed by all investigators before database  
4 lock. A range of continuous and categorical data will be collected at baseline and at various  
5  
6  
7  
8 time points on the patients recruited into the primary cohort and the additional  
9  
10  
11 assessments. Descriptive statistics of the baseline data will be presented using appropriate  
12  
13 tabular and graphical methods both for the prospective cohort and the historical controls.  
14  
15 Comparability of the cohorts in terms of baseline characteristics will be assessed using  
16  
17  
18 appropriate statistical tests.  
19

20  
21 The proportion of patients undergoing a major amputation within the first 12 months will be  
22  
23 calculated and presented with 95% confidence intervals. The prospective cohort will be  
24  
25 compared to the historical controls using logistic regression with major amputation within  
26  
27  
28 12 months as the dependent variable. The model will be run both unadjusted and adjusted  
29  
30 for important confounders such as age, sex and comorbidities. A similar modelling strategy  
31  
32 will be employed to assess the association between interventions and short-, medium- and  
33  
34 long-term outcomes. Cox proportional hazards modelling will be used to assess association  
35  
36 with both mortality and amputation free survival. Statistical analyses will be two-sided with  
37  
38 a 5% significance level.  
39  
40  
41

#### 42 43 Sample size calculation

44  
45  
46 The historical amputation rate among patients with SLI is around 25%.<sup>4</sup> We anticipate a  
47  
48 reduction in amputation rate among this contemporary cohort in the region of 10%. A  
49  
50 sample size of 335 patients will be required to detect a 10% reduction in amputation rate in  
51  
52 comparison to a similar sized historical cohort, with 90% power and type-I error rate of 5%.  
53  
54  
55 The target sample size will be 420 patients to account for a potential loss to follow-up of  
56  
57  
58 20%. A minimum of 335 patients in the contemporary cohort will enable an estimate of  
59  
60

1  
2  
3 amputation rate of 15% with a 95% confidence interval of 11.3-19.2%, which is clinically  
4  
5 acceptable.  
6  
7

### 8 9 **Ethics & dissemination**

10  
11 This study has received ethical approval from the UK National Research Ethics Service  
12  
13 (19/LO/0132). The study sponsor is the University of Leicester and all their standard  
14  
15 operating procedures will be followed ensuring this study complies with all relevant  
16  
17 legislation and guidelines. Direct access will be granted to authorised representatives from  
18  
19 the sponsor, host institution and regulatory authorities to permit study related monitoring,  
20  
21 audit and inspection. The Chief Investigator (RS) will ensure that this study is conducted in  
22  
23 full conformity with the Declaration of Helsinki (last amended October 2013).  
24  
25  
26  
27

28  
29 As this is not considered a high-risk study, adverse events or adverse reactions will not be  
30  
31 reported and there are many serious adverse events/reactions (SAEs/SARs) that are  
32  
33 reasonably expected in this group of patients. Expected SAEs/SARs (Supplementary File 1)  
34  
35 will not be reported. All suspected unexpected SAEs/SARs related to the study will be  
36  
37 documented on the SAE form and reported to the sponsor within 24 hours of the  
38  
39 investigator becoming aware of the event.  
40  
41  
42  
43  
44

45 A summary of findings will be available to patients on request. It is the intention to  
46  
47 disseminate any findings from the study at relevant national and international meetings and  
48  
49 in peer-reviewed medical journals. Results will also be distributed through social media and  
50  
51 in plain language using our University accounts to increase access to the general public. All  
52  
53 clinicians and researchers involved will be acknowledged in written papers. For each output  
54  
55 a writing team will be convened from the study group and external collaborators (where  
56  
57  
58  
59  
60

1  
2  
3 necessary). Authorship will be decided on a paper-by-paper basis. Anonymised study data  
4  
5 will be available on request to the Chief Investigator (RS).  
6  
7  
8  
9  
10  
11  
12  
13  
14  
15  
16  
17  
18  
19  
20  
21  
22  
23  
24  
25  
26  
27  
28  
29  
30  
31  
32  
33  
34  
35  
36  
37  
38  
39  
40  
41  
42  
43  
44  
45  
46  
47  
48  
49  
50  
51  
52  
53  
54  
55  
56  
57  
58  
59  
60

For peer review only

## References

1. Fowkes FGR, Rudan D, Rudan I, et al. Comparison of global estimates of prevalence and risk factors for peripheral artery disease in 2000 and 2010: a systematic review and analysis. *The Lancet* 2013;**382**(9901):1329-40.
2. Criqui M, Aboyans V. Epidemiology of peripheral artery disease. *Circulation research* 2015;**116**(9):1509.
3. Becker F, Robert-Ebadi H, Ricco JB, et al. Chapter I: Definitions, epidemiology, clinical presentation and prognosis. *Eur J Vasc Endovasc Surg* 2011;**42 Suppl 2**:S4-12.
4. Norgren L, Hiatt WR, Dormandy JA, et al. Inter-Society Consensus for the Management of Peripheral Arterial Disease (TASC II). *J Vasc Surg* 2007;**45 Suppl S**:S5-67.
5. Ahmad N, Thomas GN, Gill P, et al. The prevalence of major lower limb amputation in the diabetic and non-diabetic population of England 2003–2013. *Diabetes and Vascular Disease Research* 2016;**13**(5):348-53.
6. Kerr M. Diabetic foot care in England: an economic study. *Secondary Diabetic foot care in England: an economic study* 2017. <https://diabetes-resources-production.s3-eu-west-1.amazonaws.com/diabetes-storage/migration/pdf/Diabetic%2520footcare%2520in%2520England%2C%2520An%2520economic%2520case%2520study%2520%28January%25202017%29.pdf>.
7. Jeffcoate W, Bakker K. World Diabetes Day: footing the bill. *The Lancet* 2005;**365**(9470):1527.
8. Davie-Smith F, Coulter E, Kennon B, et al. Factors influencing quality of life following lower limb amputation for peripheral arterial occlusive disease: A systematic review of the literature. *Prosthetics and Orthotics International* 2017;**41**(6):537-47.

- 1  
2  
3 9. Suckow BD, Goodney PP, Cambria RA, et al. Predicting functional status following  
4  
5 amputation after lower extremity bypass. *Annals of vascular surgery* 2012;**26**(1):67-  
6  
7 78.  
8  
9
- 10  
11 10. Naylor H, Russell P, Thompson J. Development of a scoring tool (BLARt score) to predict  
12  
13 functional outcome in lower limb amputees AU - Bowrey, Sarah. *Disability and*  
14  
15 *Rehabilitation* 2018:1-9.  
16
- 17  
18 11. Takeji Y, Yamaji K, Tomoi Y, et al. Impact of Frailty on Clinical Outcomes in Patients With  
19  
20 Critical Limb Ischemia. *Circulation Cardiovascular interventions* 2018;**11**(7):e006778.  
21  
22
- 23  
24 12. Hubbard RE, Story DA. Patient frailty: the elephant in the operating room. *Anaesthesia*  
25  
26 2014;**69 Suppl 1**:26-34.  
27
- 28  
29 13. Morley JE, Vellas B, van Kan GA, et al. Frailty Consensus: A Call to Action. *Journal of the*  
30  
31 *American Medical Directors Association* 2013;**14**(6):392-97.  
32
- 33  
34 14. Gale CR, Cooper C, Aihie Sayer A. Prevalence of frailty and disability: findings from the  
35  
36 *English Longitudinal Study of Ageing*. *Age and Ageing* 2015;**44**(1):162-65.  
37
- 38  
39 15. Partridge JSL, Fuller M, Harari D, et al. Frailty and poor functional status are common in  
40  
41 arterial vascular surgical patients and affect postoperative outcomes. *International*  
42  
43 *Journal of Surgery* 2015;**18**:57-63.  
44
- 45  
46 16. Xue Q-L. The Frailty Syndrome: Definition and Natural History. *Clinics in geriatric*  
47  
48 *medicine* 2011;**27**(1):1-15.  
49
- 50  
51 17. Wang J, Zou Y, Zhao J, et al. The Impact of Frailty on Outcomes of Elderly Patients After  
52  
53 Major Vascular Surgery: A Systematic Review and Meta-analysis. *European Journal of*  
54  
55 *Vascular and Endovascular Surgery* 2018.  
56
- 57  
58 18. de Vries NM, Staal JB, van Ravensberg CD, et al. Outcome instruments to measure  
59  
60 frailty: A systematic review. *Ageing Research Reviews* 2011;**10**(1):104-14.

- 1  
2  
3 19. Robertson DA, Savva GM, Kenny RA. Frailty and cognitive impairment—A review of the  
4  
5 evidence and causal mechanisms. *Ageing Research Reviews* 2013;**12**(4):840-51.  
6  
7
- 8 20. Partridge JSL, Dhesei JK, Cross JD, et al. The prevalence and impact of undiagnosed  
9  
10 cognitive impairment in older vascular surgical patients. *Journal of Vascular Surgery*  
11  
12 2014;**60**(4):1002.  
13  
14
- 15 21. Fried LP, Tangen CM, Walston J, et al. Frailty in older adults: evidence for a phenotype. *J*  
16  
17 *Gerontol A Biol Sci Med Sci* 2001;**56**(3):M146-56.  
18  
19
- 20 22. Cruz-Jentoft AJ, Bahat G, Bauer J, et al. Sarcopenia: revised European consensus on  
21  
22 definition and diagnosis. *Age and Ageing* 2019;**48**(1):16-31.  
23  
24
- 25 23. Reeve TE, Ur R, Craven TE, et al. Grip strength measurement for frailty assessment in  
26  
27 patients with vascular disease and associations with comorbidity, cardiac risk, and  
28  
29 sarcopenia. *Journal of vascular surgery* 2018;**67**(5):1512-20.  
30  
31
- 32 24. Matsubara Y, Matsumoto T, Inoue K, et al. Sarcopenia is a risk factor for cardiovascular  
33  
34 events experienced by patients with critical limb ischemia. *Journal of Vascular*  
35  
36 *Surgery* 2017;**65**(5):1390-97.  
37  
38
- 39 25. Pol RA, Van Leeuwen BL, Visser L, et al. Standardised frailty indicator as predictor for  
40  
41 postoperative delirium after vascular surgery: A prospective cohort study. *European*  
42  
43 *Journal of Vascular and Endovascular Surgery* 2011;**42**(6):824-30.  
44  
45  
46
- 47 26. Visser L, Prent A, van der Laan MJ, et al. Predicting postoperative delirium after vascular  
48  
49 surgical procedures. *Journal of Vascular Surgery* 2015;**62**(1):183-89.  
50  
51
- 52 27. Hertzner NR. Clinical experience with preoperative coronary angiography. *Journal of*  
53  
54 *Vascular Surgery* 1985;**2**(3):510-12.  
55  
56  
57  
58  
59  
60

- 1  
2  
3  
4  
5  
6  
7  
8  
9  
10  
11  
12  
13  
14  
15  
16  
17  
18  
19  
20  
21  
22  
23  
24  
25  
26  
27  
28  
29  
30  
31  
32  
33  
34  
35  
36  
37  
38  
39  
40  
41  
42  
43  
44  
45  
46  
47  
48  
49  
50  
51  
52  
53  
54  
55  
56  
57  
58  
59  
60
28. Her K, Choi C, Park Y, et al. Concomitant peripheral artery disease and asymptomatic coronary artery disease: a management strategy. *Annals of vascular surgery* 2008;**22**(5):649-56.
29. Pande RL, Perlstein TS, Beckman JA, et al. Secondary prevention and mortality in peripheral artery disease: National Health and Nutrition Examination Study, 1999 to 2004. *Circulation* 2011;**124**(1):17-23.
30. Landesberg G, Mosseri M, Wolf YG, et al. Preoperative thallium scanning, selective coronary revascularization, and long-term survival after major vascular surgery. *Circulation* 2003;**108**(2):177-83.
31. Wagner A, Mahrholdt H, Holly TA, et al. Contrast-enhanced MRI and routine single photon emission computed tomography (SPECT) perfusion imaging for detection of subendocardial myocardial infarcts: an imaging study. *The Lancet* 2003;**361**(9355):374-79.
32. Khoo JP, Grundy BJ, Steadman CD, et al. Stress cardiovascular MR in routine clinical practice: referral patterns, accuracy, tolerance, safety and incidental findings. *The British journal of radiology* 2012;**85**(1018):e851-7.
33. Greenwood JP, Ripley DP, Berry C, et al. Effect of Care Guided by Cardiovascular Magnetic Resonance, Myocardial Perfusion Scintigraphy, or NICE Guidelines on Subsequent Unnecessary Angiography Rates: The CE-MARC 2 Randomized Clinical Trial. *JAMA : the journal of the American Medical Association* 2016;**316**(10):1051-60.
34. Greenwood JP, Maredia N, Younger JF, et al. Cardiovascular magnetic resonance and single-photon emission computed tomography for diagnosis of coronary heart disease (CE-MARC): a prospective trial. *Lancet* 2012;**379**(9814):453-60.



- 1  
2  
3 35. Xue H, Inati S, Sorensen TS, et al. Distributed MRI reconstruction using Gadgetron-based  
4  
5 cloud computing. *Magnetic resonance in medicine : official journal of the Society of*  
6  
7  
8 *Magnetic Resonance in Medicine / Society of Magnetic Resonance in Medicine*  
9  
10 2015;**73**(3):1015-25.  
11  
12
- 13 36. Kellman P, Hansen MS, Nielles-Vallespin S, et al. Myocardial perfusion cardiovascular  
14  
15 magnetic resonance: optimized dual sequence and reconstruction for quantification.  
16  
17 *Journal of cardiovascular magnetic resonance : official journal of the Society for*  
18  
19 *Cardiovascular Magnetic Resonance* 2017;**19**(1):43.  
20  
21  
22
- 23 37. Engblom H, Xue H, Akil S, et al. Fully quantitative cardiovascular magnetic resonance  
24  
25 myocardial perfusion ready for clinical use: a comparison between cardiovascular  
26  
27 magnetic resonance imaging and positron emission tomography. *Journal of*  
28  
29 *cardiovascular magnetic resonance : official journal of the Society for Cardiovascular*  
30  
31 *Magnetic Resonance* 2017;**19**(1):78.  
32  
33  
34
- 35 38. Mills JL, Sr., Conte MS, Armstrong DG, et al. The Society for Vascular Surgery Lower  
36  
37 Extremity Threatened Limb Classification System: risk stratification based on wound,  
38  
39 ischemia, and foot infection (WIFI). *J Vasc Surg* 2014;**59**(1):220-34 e1-2.  
40  
41  
42
- 43 39. Aboyans V, Ricco JB, Bartelink MEL, et al. 2017 ESC Guidelines on the Diagnosis and  
44  
45 Treatment of Peripheral Arterial Diseases, in collaboration with the European Society  
46  
47 for Vascular Surgery (ESVS): Document covering atherosclerotic disease of  
48  
49 extracranial carotid and vertebral, mesenteric, renal, upper and lower extremity  
50  
51 arteries Endorsed by: the European Stroke Organization (ESO) The Task Force for the  
52  
53 Diagnosis and Treatment of Peripheral Arterial Diseases of the European Society of  
54  
55 Cardiology (ESC) and of the European Society for Vascular Surgery (ESVS). *Eur Heart J*  
56  
57 2018;**39**(9):763-816.  
58  
59  
60

- 1  
2  
3 40. Breen P, Simpson S, Packer C. New and emerging angioplasty technologies in  
4  
5 development for severe lower limb ischaemia. Birmingham, UK: The NIHR Horizon  
6  
7 Scanning Research & Intelligence Centre University of Birmingham, 2016.  
8  
9
- 10 41. Slim H, Tiwari A, Ahmed A, et al. Distal versus Ultradistal Bypass Grafts: Amputation-free  
11  
12 Survival and Patency Rates in Patients with Critical Leg Ischaemia. European Journal  
13  
14 of Vascular and Endovascular Surgery 2011;**42**(1):83-88.  
15  
16
- 17 42. Taeymans K, Groot Jebbink E, Holewijn S, et al. Three-year outcome of the covered  
18  
19 endovascular reconstruction of the aortic bifurcation technique for aortoiliac  
20  
21 occlusive disease. Journal of Vascular Surgery 2018;**67**(5):1438-47.  
22  
23  
24
- 25 43. Boyle J, Brooks M, Biram R, et al. A Best Practic Clinical Care Pathway for Peripheral  
26  
27 Arterial Disease. Secondary A Best Practic Clinical Care Pathway for Peripheral  
28  
29 Arterial Disease 2019.  
30  
31  
32 [https://www.vascularsociety.org.uk/ userfiles/pages/files/Newsletters/PAD%20QIF](https://www.vascularsociety.org.uk/userfiles/pages/files/Newsletters/PAD%20QIF%20April%202019(1).pdf)  
33  
34 [%20April%202019\(1\).pdf](https://www.vascularsociety.org.uk/userfiles/pages/files/Newsletters/PAD%20QIF%20April%202019(1).pdf).  
35  
36
- 37 44. Edmans J, Bradshaw L, Gladman JRF, et al. The Identification of Seniors at Risk (ISAR)  
38  
39 score to predict clinical outcomes and health service costs in older people discharged  
40  
41 from UK acute medical units. Age and ageing 2013;**42**(6):747-53.  
42  
43
- 44 45. Adam DJ, Beard JD, Cleveland T, et al. Bypass versus angioplasty in severe ischaemia of  
45  
46 the leg (BASIL): multicentre, randomised controlled trial. Lancet  
47  
48 2005;**366**(9501):1925-34.  
49  
50
- 51 46. Ince P, Abbas ZG, Lutale JK, et al. Use of the SINBAD classification system and score in  
52  
53 comparing outcome of foot ulcer management on three continents. Diabetes Care  
54  
55 2008;**31**(5):964-7.  
56  
57  
58  
59  
60

- 1  
2  
3 47. Rockwood K, Song X, MacKnight C, et al. A global clinical measure of fitness and frailty in  
4  
5 elderly people. *CMAJ* 2005;**173**(5):489-95.  
6  
7  
8 48. Morgan MB, Crayford T, Murrin B, et al. Developing the Vascular Quality of Life  
9  
10 Questionnaire: a new disease-specific quality of life measure for use in lower limb  
11  
12 ischemia. *J Vasc Surg* 2001;**33**(4):679-87.  
13  
14  
15 49. Collin C, Wade DT, Davies S, et al. The Barthel ADL Index: A reliability study. *International*  
16  
17 *Disability Studies* 1988;**10**(2):61-63.  
18  
19  
20 50. Zigmond AS, Snaith RP. The hospital anxiety and depression scale. *Acta psychiatrica*  
21  
22 *scandinavica* 1983;**67**(6):361-70.  
23  
24  
25 51. Rolfson DB, Majumdar SR, Tsuyuki RT, et al. Validity and reliability of the Edmonton Frail  
26  
27 *Scale*. *Age and Ageing* 2006;**35**(5):526-29.  
28  
29  
30 52. Nasreddine ZS, Phillips NA, Bédirian V, et al. The Montreal Cognitive Assessment, MoCA:  
31  
32 a brief screening tool for mild cognitive impairment. *Journal of the American*  
33  
34 *Geriatrics Society* 2005;**53**(4):695-99.  
35  
36  
37 53. Guralnik JM, Simonsick EM, Ferrucci L, et al. A short physical performance battery  
38  
39 assessing lower extremity function: association with self-reported disability and  
40  
41 prediction of mortality and nursing home admission. *Journal of gerontology*  
42  
43 1994;**49**(2):M85-M94.  
44  
45  
46  
47 54. Sands MB, Dantoc BP, Hartshorn A, et al. Single question in delirium (SQiD): testing its  
48  
49 efficacy against psychiatrist interview, the confusion assessment method and the  
50  
51 memorial delirium assessment scale. *Palliative Medicine* 2010;**24**(6):561-65.  
52  
53  
54 55. Bellelli G, Morandi A, Davis DH, et al. Validation of the 4AT, a new instrument for rapid  
55  
56 delirium screening: a study in 234 hospitalised older people. *Age Ageing*  
57  
58 2014;**43**(4):496-502.  
59  
60

- 1  
2  
3 56. Singh A, Greenwood JP, Berry C, et al. Comparison of exercise testing and CMR  
4  
5 measured myocardial perfusion reserve for predicting outcome in asymptomatic  
6  
7 aortic stenosis: the PRognostic Importance of MIcrovascular Dysfunction in Aortic  
8  
9 Stenosis (PRIMID AS) Study. *European heart journal* 2017;**38**(16):1222-29.  
10  
11  
12  
13 57. Mordi I, Stanton T, Carrick D, et al. Comprehensive dobutamine stress CMR versus  
14  
15 echocardiography in LBBB and suspected coronary artery disease. *JACC Cardiovasc*  
16  
17 *Imaging* 2014;**7**(5):490-8.  
18  
19  
20 58. Cerqueira MD, Weissman NJ, Dilsizian V, et al. Standardized myocardial segmentation  
21  
22 and nomenclature for tomographic imaging of the heart. A statement for healthcare  
23  
24 professionals from the Cardiac Imaging Committee of the Council on Clinical  
25  
26 Cardiology of the American Heart Association. *Circulation* 2002;**105**(4):539-42.  
27  
28  
29  
30 59. Rahimi K, Banning AP, Cheng AS, et al. Prognostic value of coronary revascularisation-  
31  
32 related myocardial injury: a cardiac magnetic resonance imaging study. *Heart*  
33  
34 2009;**95**(23):1937-43.  
35  
36  
37 60. Kays JK, Liang TW, Zimmers TA, et al. Sarcopenia is a significant predictor of mortality  
38  
39 after abdominal aortic aneurysm repair. *JCSM Clinical Reports* 2018;**3**(1).  
40  
41  
42 61. Harris PA, Taylor R, Thielke R, et al. Research electronic data capture (REDCap)--a  
43  
44 metadata-driven methodology and workflow process for providing translational  
45  
46 research informatics support. *J Biomed Inform* 2009;**42**(2):377-81.  
47  
48  
49  
50  
51  
52  
53  
54  
55  
56  
57  
58  
59  
60

## **Figure Legends**

Figure 1: Study overview. Numbers are estimates for the whole two-year recruitment period and based on local audit data from 2018/19.

MRI, Magnetic resonance imaging.

Figure 2: Cardiac MRI protocol including Dixon function for abdominal visceral and subcutaneous fat. L3, 3rd Lumbar vertebra; 4/3/2 Ch, 4/3/2 chamber; SAO, sagittal oblique.

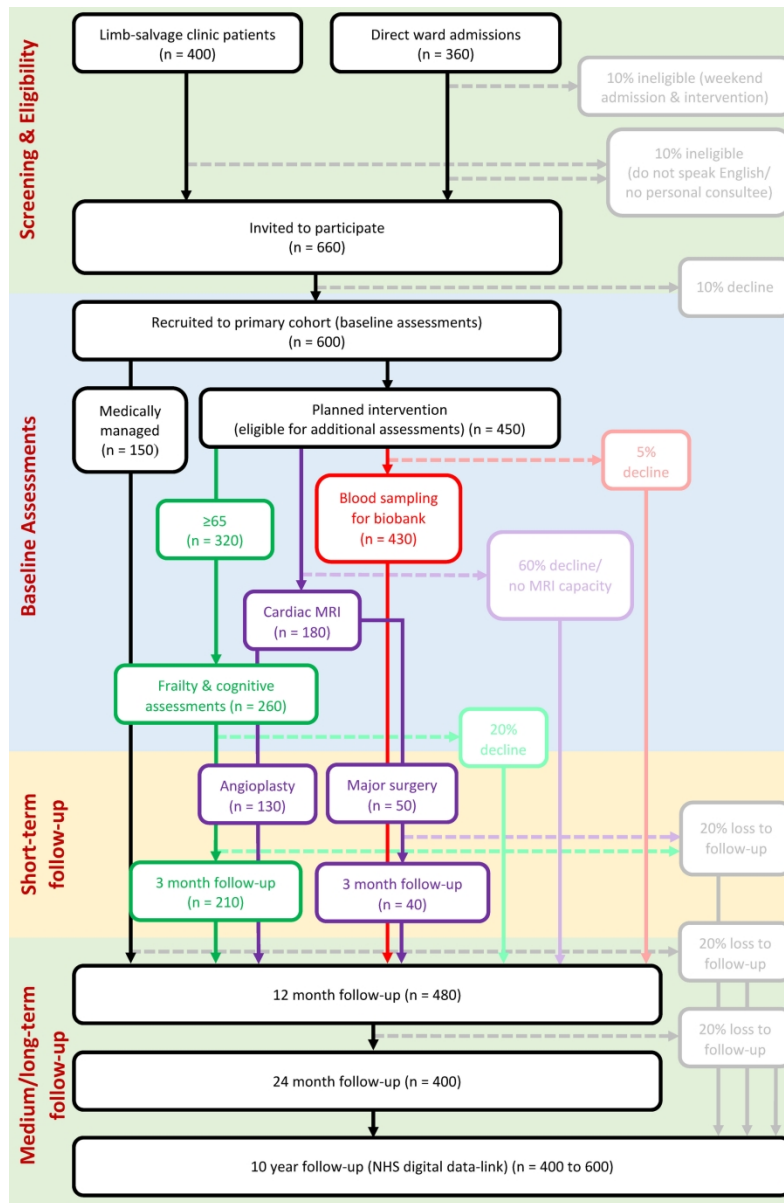


Figure 1: Study overview.  
 Numbers are estimates for the whole two-year recruitment period and based on local audit data from 2018/19.

MRI, Magnetic resonance imaging

175x266mm (300 x 300 DPI)

1  
2  
3  
4  
5  
6  
7  
8  
9  
10  
11  
12  
13  
14  
15  
16  
17  
18  
19  
20  
21  
22  
23  
24  
25  
26  
27  
28  
29  
30  
31  
32  
33  
34  
35  
36  
37  
38  
39  
40  
41  
42  
43  
44  
45  
46  
47  
48  
49  
50  
51  
52  
53  
54  
55  
56  
57  
58  
59  
60

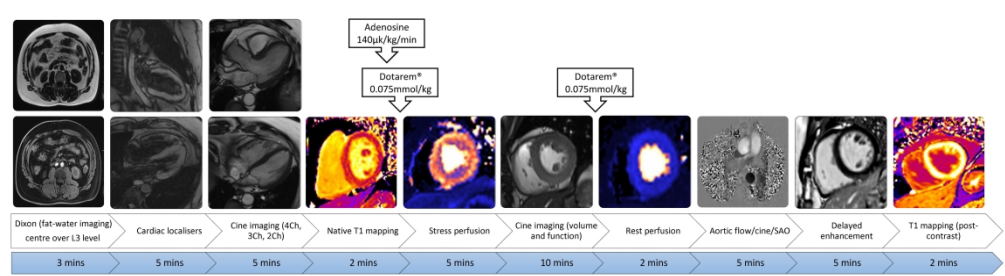


Figure 2: Cardiac MRI protocol including Dixon function for abdominal visceral and subcutaneous fat. L3, 3rd lumbar vertebra; 4/3/2Ch, 4/3/2 chamber; SAO, sagittal oblique.

338x90mm (300 x 300 DPI)

## Expected adverse events and serious adverse events

### **Cardiac**

Angina  
Ankle swelling and  
peripheral oedema  
Arrhythmias  
Cardiac arrest  
Cardiac failure  
Myocardial infarction  
Palpitations  
Poor exercise tolerance  
Shortness of breath  
Tiredness and exhaustion

### **Respiratory**

Chest infection  
Cough  
Exacerbation of COPD  
Pneumonia  
Pulmonary embolus  
Respiratory failure

### **Leg problems**

Bruising  
Cellulitis  
Debridement of leg/foot  
wound  
DVT  
Foot amputation  
Haematoma  
Lymph leak  
Minor amputation of toes  
Osteomyelitis of  
leg/foot/toes  
Pain  
Phlebitis  
Wound breakdown  
Wound infection

### **Diabetes**

Drug reactions  
Hyperglycaemia  
Hypoglycaemia  
Infections  
Injections site problems  
Neuropathy

### **General**

Abdominal pain  
Anxiety  
Arm / hand pain  
Backache  
Breast lumps  
Breast pain  
Cellulitis  
Constipation  
Delirium  
Depression  
Diarrhoea  
Earache  
Falls  
Fractures  
Gastrointestinal bleeding  
Gastro-oesophageal  
reflux disease  
Gynaecological bleeding  
Head injury  
Headache  
Indigestion  
Influenza  
Intra-abdominal  
infections and sepsis  
Jaundice  
Joint inflammation  
Joint pain  
Leg/foot pain  
Liver disease  
Malaise  
Malignancy  
Neck and spine pain  
Neck pain  
Necrotising fasciitis  
Nose bleeds  
Osteoarthritis  
Other forms of arthritis  
Parkinson disease  
Pelvic pain  
Peptic ulcer disease  
Piles and perianal disease  
Prostatism  
Psychiatric illness

Rectal bleeding  
Renal impairment  
Sciatica  
Skin lesions  
Skin rashes  
Soft tissue inflammation  
Stress  
Stroke  
Transient ischaemic  
attack  
Toothache  
Urinary retention  
Urinary tract infection  
Vomiting



# BMJ Open

## Leg Ischaemia Management collaboration (LIMb): study protocol for a single-centre prospective cohort study

Journal:	<i>BMJ Open</i>
Manuscript ID	bmjopen-2019-031257.R1
Article Type:	Protocol
Date Submitted by the Author:	15-Jul-2019
Complete List of Authors:	Houghton, John; University of Leicester, Department of Cardiovascular Sciences Nduwayo, Sarah; University of Leicester, Department of Cardiovascular Sciences Nickinson, Andrew; University of Leicester, Department of Cardiovascular Sciences Payne, Tanya; University of Leicester, Department of Cardiovascular Sciences Sterland, Sue; University of Leicester, Department of Cardiovascular Sciences Nath, Mintu; University of Leicester, Department of Cardiovascular Sciences Gray, Laura; University of Leicester, Department of Health Sciences McMahon, Greg; University Hospitals of Leicester NHS Trust, Leicester Vascular Institute Rayt, Harjeet; University Hospitals of Leicester NHS Trust, Leicester Vascular Institute Singh, Sally; University Hospitals of Leicester NHS Trust, Cardiac/Pulmonary Rehabilitation Robinson, Thompson; University of Leicester, Department of Cardiovascular Sciences Conroy, Simon; University of Leicester, Department of Health Sciences Haunton, Victoria; University of Leicester, Department of Cardiovascular Sciences McCann, Gerry; University of Leicester, Department of Cardiovascular Sciences Bown, Matthew; University of Leicester, Department of Cardiovascular Sciences Davies, Robert; University Hospitals of Leicester NHS Trust, Leicester Vascular Institute Sayers, Rob; University of Leicester, Department of Cardiovascular Sciences
<b>Primary Subject Heading</b>:	Surgery
Secondary Subject Heading:	Cardiovascular medicine, Geriatric medicine
Keywords:	VASCULAR SURGERY, Peripheral Arterial Disease, Limb Salvage, Frailty, Delirium & cognitive disorders < PSYCHIATRY, Cardiovascular imaging < RADIOLOGY & IMAGING

1  
2  
3  
4  
5  
6  
7  
8  
9  
10  
11  
12  
13  
14  
15  
16  
17  
18  
19  
20  
21  
22  
23  
24  
25  
26  
27  
28  
29  
30  
31  
32  
33  
34  
35  
36  
37  
38  
39  
40  
41  
42  
43  
44  
45  
46  
47  
48  
49  
50  
51  
52  
53  
54  
55  
56  
57  
58  
59  
60



SCHOLARONE™  
Manuscripts

1  
2  
3  
4 **Title: Leg Ischaemia Management collaboration (LIMb): study protocol**  
5  
6  
7 **for a single-centre prospective cohort study**  
8

9 **Authors:** J.S.M. Houghton<sup>1,2,3</sup> (corresponding author), S. Nduwayo<sup>1,2,3</sup>, A. Nickinson<sup>1,2,3</sup>, T. J. Payne<sup>1,3</sup>,  
10  
11 S. Sterland<sup>1,3</sup>, M. Nath<sup>1,3</sup>, L.J. Gray<sup>4</sup>, G. McMahon<sup>1,2</sup>, H.S. Rayt<sup>1,2</sup>, S. Singh<sup>2</sup>, T. Robinson<sup>1,3</sup>, S.  
12  
13 P. Conroy<sup>4</sup>, V.J. Haunton<sup>1</sup>, G.P. McCann<sup>1,3</sup>, M.J. Bown<sup>1,2,3</sup>, R.S.M. Davies<sup>1,2</sup> and R.D. Sayers<sup>1,2,3</sup>  
14  
15  
16

17 **Author affiliations:** <sup>1</sup>Department of Cardiovascular Sciences, University of Leicester, <sup>2</sup>  
18  
19 Leicester Vascular Institute, University Hospitals of Leicester NHS Trust, <sup>3</sup>National Institute  
20  
21 for Health Research Leicester Biomedical Research Centre –The Glenfield Hospital, Leicester,  
22  
23 and <sup>4</sup>Department of Health Sciences, University of Leicester, Leicester, UK  
24  
25  
26

27  
28 **Keywords:** Peripheral arterial disease, Limb salvage, Frailty, Cognitive dysfunction,  
29  
30 Myocardial perfusion imaging, Biomarkers  
31  
32

33 **Correspondence to:** Mr John Houghton, Cardiovascular Research Centre, University of  
34  
35 Leicester, Glenfield Hospital, Groby Road, Leicester, LE3 9QP (email:  
36  
37 john.houghton@nhs.net)  
38  
39

40  
41 **Author contributions:** All authors contributed to the study design. J.S.M.H. contributed to  
42  
43 writing the study protocol and drafted and revised the paper. S.N., A.N., S.S., S.P.C., V.J.H.  
44  
45 and G.P.M. contributed to writing the study protocol and revised the draft paper. T.J.P. is  
46  
47 the study manager, edited the study protocol and revised the draft paper. S.S. wrote the  
48  
49 data analysis plan and study database, and revised the draft paper. M.N. and L.J.G. wrote  
50  
51 the statistical analysis plan and revised the draft paper. G.M., H.R., T.R., and M.J.B. revised  
52  
53 the draft paper. R.S.M.D. is principle investigator and revised the draft paper. R.D.S. is chief  
54  
55 investigator, wrote the study protocol and revised the draft paper.  
56  
57  
58  
59  
60

1  
2  
3 **Acknowledgements:** The authors would like to thank George Davies and the George Davies  
4  
5 Charitable Trust for the generous charitable donation that funded this study, Natasha  
6  
7 Bryant for the development of the data capture and management procedures, and Gaurav  
8  
9 Gulsin for providing the research images of the cardiac MR sequence.  
10  
11

12  
13 **Data sharing statement:** Anonymised dataset will be available on request to the Chief  
14  
15 Investigator (R. Sayers).  
16  
17

18  
19 **Funding statement:** The LIMb study and LIMb investigators J. Houghton, A. Nickinson, S.  
20  
21 Nduwayo and T. Payne are funded, and R. Sayers part-funded, by a charitable donation from  
22  
23 the George Davies Charitable Trust (Registered Charity Number: 1024818) and supported by  
24  
25 the NIHR Leicester Biomedical Research Centre. G. McCann is funded by a NIHR Research  
26  
27 Professorship (2017-08-ST2-007). T. Robinson is an NIHR senior Investigator.  
28  
29  
30

31  
32 **Competing interests statement:** R. Davies has acted as a speaker for Gore Medical and has  
33  
34 received educational grants from Terumo/Aortic outside the submitted work.  
35  
36

37 **Study protocol**  
38  
39  
40  
41  
42  
43  
44  
45  
46  
47  
48  
49  
50  
51  
52  
53  
54  
55  
56  
57  
58  
59  
60

## **Abstract**

### **Introduction**

Severe limb ischaemia (SLI) is the end-stage of peripheral arterial occlusive disease where the viability of the limb is threatened. Around 25% of patients with SLI will ultimately require a major lower limb amputation which has a substantial adverse impact on quality of life. A newly established rapid-access vascular limb salvage clinic and modern revascularisation techniques may reduce amputation rate. The aim of this study is to investigate the 12-month amputation rate in a contemporary cohort of patients and compare this to a historical cohort. Secondary aims are to investigate the use of frailty and cognitive assessments, and cardiac MRI in risk-stratifying patients with SLI undergoing intervention and establish a biobank for future biomarker analyses.

### **Methods & analysis**

This single-centre prospective cohort study will recruit patients aged 18-110 years presenting with SLI. Those undergoing intervention will be eligible to undergo additional venepuncture (for biomarker analysis) and/or cardiac MRI. Those aged  $\geq 65$  years and undergoing intervention will also be eligible to undergo additional frailty and cognitive assessments. Follow-up will be at 12 and 24 months and subsequently via data-linkage with NHS digital to 10 years post-recruitment. Those undergoing cardiac MRI and/or frailty assessments will receive additional follow-up during the first 12 months to investigate for peri-operative myocardial infarction and frailty related outcomes, respectively. A sample size of 420 patients will be required to detect a 10% reduction in amputation rate in comparison to a similar sized historical cohort, with 90% power and 5% type-I error rate.

1  
2  
3 Statistical analysis of this comparison will be by adjusted and unadjusted logistic regression  
4  
5 analyses.  
6  
7

### 8 **Ethics & dissemination**

9  
10  
11 Ethical approval for this study has been granted by the UK National Research Ethics Service  
12  
13 (19/LO/0132). Results will be disseminated to participants, via scientific meetings, peer-  
14  
15 reviewed medical journals and social media.  
16  
17

### 18 **Study registration**

19  
20  
21 ClinicalTrials.gov [NCTXXXXXXXX]  
22  
23  
24  
25  
26  
27  
28

29 Abstract word count: 298  
30  
31

32 Manuscript word count: 4,653  
33  
34  
35  
36  
37  
38  
39  
40  
41  
42  
43  
44  
45  
46  
47  
48  
49  
50  
51  
52  
53  
54  
55  
56  
57  
58  
59  
60

## **Article summary**

### **Strengths & limitations of this study**

- This prospective study of a contemporary cohort of patients with severe limb ischaemia (including both patients with and without diabetes) will provide a valuable update to observational evidence.
- The inclusion of patients lacking capacity reduces potential selection bias.
- The use of comprehensive assessments of frailty syndromes and cardiac MRI may provide valuable additional strategies to assess risk.
- The single-centre study design will limit the generalisability of its results.
- The retrospective collection of historical control data and observational nature of the study will limit the strength of evidence of the results.

## **Introduction**

Peripheral arterial occlusive disease (PAOD) is a chronic condition caused by atherosclerosis of arteries supplying the lower limbs. In high-income countries its prevalence is over 10% in those aged over 65.<sup>1</sup> PAOD is often asymptomatic but as the disease progresses patients may develop symptoms such as intermittent claudication.<sup>2</sup> Severe limb ischaemia (SLI) is the end-stage of PAOD in which the viability of the limb is threatened due to the degree of arterial disease and subsequent ischaemia in the peripheral tissues, and is characterised by ischaemic rest pain and tissue necrosis, leading to ulceration and gangrene.<sup>3</sup> Treatment options include open surgical and endovascular revascularisation, with or without surgical debridement of affected tissues, amputation of toes and drainage of sepsis. In some patients revascularisation is not possible and primary major lower limb amputation, or amputation after failed attempted revascularisation, is required.<sup>4</sup>

Lower limb amputation is a life-changing tragedy for the patient and a huge financial burden to the NHS. Between 2003 and 2013 over 4000 major lower limb amputations were performed each year in England alone.<sup>5</sup> With the rising prevalence of diabetes and diabetic foot disease (DFD), a diabetes-related major lower limb amputation is performed every 30 seconds worldwide and over 7000 diabetes-related major and minor amputations are now performed each year in England and Wales.<sup>6,7</sup> Major lower limb amputation negatively affects quality of life due to its significant impact on mobility, independence, social isolation and ability to carry out activities of daily living.<sup>8</sup> Only around 20% of those undergoing an amputation for PAOD are independently ambulant one-year post procedure.<sup>9,10</sup>



### Frailty, cognitive impairment and delirium

A major challenge in managing patients with SLI is decision making regarding optimum treatment strategies. As well as anatomical considerations regarding revascularisation strategy, an accurate assessment of both the risk of treatment failure and morbidity associated with a procedure should be taken into account. This is particularly challenging in patients with SLI as they are often elderly with multiple comorbidities.<sup>11</sup> Frailty is a distinct health state and is increasingly recognised as a major contributor to adverse outcomes in surgical patients.<sup>12</sup> Frailty is defined as “a medical syndrome with multiple causes and contributors that is characterized by diminished strength, endurance, and reduced physiologic function that increases an individual’s vulnerability for developing increased dependency and/or death”.<sup>13</sup> Around 10% of people aged over 65 years are frail, increasing to more than 30% of those aged over 85, whilst prevalence of frailty in patients with SLI may be over 50%.<sup>11 14 15</sup> Frail patients are less able to respond to acute stressors, such as major surgery, and are therefore more susceptible to adverse health outcomes such as mortality and post-operative complications.<sup>16 17</sup> Multiple validated tools used to assess patients for frailty have been developed which can be utilised in pre-operative assessment.<sup>13 18</sup>

Both cognitive impairment and sarcopenia are also of interest in this cohort as they are associated with frailty, vascular disease and vascular risk factors.<sup>19-21</sup> Cognitive impairment, encompassing a spectrum of diseases from mild cognitive impairment to dementia, manifests as memory problems, poor concentration and difficulty making decisions about things affecting everyday life. Sarcopenia is a “progressive and generalised skeletal muscle disorder that is associated with increased likelihood of adverse outcomes” and defined as low muscle strength plus low muscle quantity or quality and/or low physical performance.<sup>22</sup> Sarcopenia has been assessed both clinically and radiologically (using cross-sectional

1  
2  
3 imaging) in vascular patients.<sup>23 24</sup> Frailty, cognitive impairment and sarcopenia have been  
4  
5 implicated in worse outcome following vascular surgery.<sup>17</sup> Post-operative delirium is one  
6  
7 such outcome which has been shown to be associated both with frailty in vascular patients  
8  
9 and worse short- and long-term outcome following vascular surgery.<sup>25 26</sup>  
10  
11

### 12 13 Coronary artery disease (CAD)

14  
15 CAD is a highly prevalent and major co-morbidity of patients with PAOD. Very few vascular  
16  
17 surgery patients have normal coronary arteries on coronary angiography.<sup>27</sup> Coronary  
18  
19 angiography has also shown that around 60% of vascular surgery patients have severe CAD  
20  
21 (>70% stenosis), and in those without symptoms or history of ischaemic heart disease  
22  
23 undergoing vascular surgery, around 70% have evidence of CAD, half of whom have severe  
24  
25 disease.<sup>27 28</sup> Patients with PAOD have a 20-60% increased risk for myocardial infarction (MI)  
26  
27 and a two- to six-fold increased risk of death due to CAD related events.<sup>29</sup> Peri-operative MI  
28  
29 (based on elevated troponin) has been reported in up to 24% of vascular patients, with 82%  
30  
31 of these not exhibiting symptoms.<sup>30</sup>  
32  
33  
34  
35  
36  
37

38  
39 Cardiac magnetic resonance imaging (MRI) is the most sensitive imaging modality for the  
40  
41 detection of myocardial necrosis/infarct and is highly accurate for the detection of  
42  
43 reversible ischaemia in a single examination.<sup>31-34</sup> Modern software allows images to be  
44  
45 acquired completely free-breathing, using motion-correction techniques and highly  
46  
47 accelerated sequences, which is particularly important for the frail or breathless patient.<sup>35 36</sup>  
48  
49 In addition myocardial blood flow can be quantified fully automatically within minutes of  
50  
51 acquisition allowing measurement of stress and rest myocardial blood flow and perfusion  
52  
53 reserve.<sup>37</sup> The identification of significant cardiac disease in these patients may allow  
54  
55  
56  
57  
58  
59  
60

1  
2  
3 further risk assessment and stratification to ensure that each patient has an optimum  
4  
5 treatment plan.  
6  
7

## 8 **Rationale**

9  
10 The most widely cited estimates of outcomes in patients with SLI are from the Trans-Atlantic  
11  
12 Consensus Statement II (2007) which state that 50% will initially undergo revascularisation  
13  
14 and 25% primary amputation, and at one-year 30% will be alive and have had an  
15  
16 amputation whilst 25% will have died.<sup>4</sup> In recent years there has been a marked  
17  
18 demographic shift with increasing prevalence of diabetes among patients with SLI and  
19  
20 intervention in older, frailer patients.<sup>11 38</sup> Whilst there has been little change in  
21  
22 recommended medical therapy of PAOD,<sup>4 39</sup> new endovascular technologies and improved  
23  
24 techniques such as ultra-distal bypass and Covered Endovascular Revascularisation of Aortic  
25  
26 Bifurcation (CERAB) allow increasingly aggressive revascularisation strategies.<sup>40-42</sup> The  
27  
28 Leicester Vascular Institute (based at Glenfield Hospital, University Hospitals of Leicester  
29  
30 NHS Trust) is a tertiary referral vascular unit providing all vascular services for Leicestershire  
31  
32 and Rutland, comprising a diverse population of approximately 1.1 million. Both a  
33  
34 recently established rapid-access limb salvage clinic, and direct vascular admission for all  
35  
36 patients admitted as an emergency for DFD, aim to improve outcomes in patients with SLI  
37  
38 and ultimately reduce the need for major lower limb amputation in line with recent  
39  
40 guidelines from The Vascular Society of Great Britain and Ireland.<sup>43</sup> A contemporary cohort  
41  
42 study will provide useful evidence of outcomes in the context of current SLI demographics,  
43  
44 revascularisation strategies and improved care pathways. Additionally, this prospective  
45  
46 cohort study provides an opportunity to make a detailed assessment of frailty, cognitive  
47  
48 impairment, and ischaemic heart disease (as detected by cardiac MR) in patients with SLI, as  
49  
50  
51  
52  
53  
54  
55  
56  
57  
58  
59  
60

1  
2  
3 well as establish a biobank for future biomarker analysis, to establish each of their roles in  
4  
5 risk stratifying patients undergoing intervention for SLI.  
6  
7

## 8 **Study aims**

### 9 Primary aim

10  
11 The primary aim of this study is to determine the proportion of patients with SLI undergoing  
12  
13 major lower limb amputation within 12 months of presentation. The primary hypothesis is  
14  
15 that contemporary amputation rate is lower than historical data.  
16  
17  
18  
19

### 20 Secondary aims

21  
22 Secondary aims are to assess clinically important short- ( $\leq 3$ -months), medium- (3-12  
23  
24 months) and long-term ( $> 12$  months) outcomes in those undergoing and not undergoing  
25  
26 amputation. We also aim to determine prevalence and degree of frailty, cognitive  
27  
28 impairment, and cardiac disease (detected by stress MRI), as well as establish a biobank for  
29  
30 future analysis of biomarkers, in those patients undergoing procedures for SLI. This may  
31  
32 allow risk stratification, and also to investigate whether patients with a higher risk of poor  
33  
34 peri-operative outcome or long-term worse prognosis are undergoing procedures with  
35  
36 increased risk of morbidity and mortality.  
37  
38  
39  
40  
41  
42  
43  
44

## 45 **Methods & analysis**

### 46 **Study design**

47  
48 This study will be a single-centre prospective observational cohort study undertaken at the  
49  
50 Leicester Vascular Institute. Recruitment will continue for a period of 2 years with a total of  
51  
52 10 years follow-up.  
53  
54  
55  
56  
57  
58  
59  
60

### Primary outcome measure

The primary outcome measure of the study is major amputation rate.

### Secondary outcome measures

Secondary outcome measures for short-, medium- and long-term follow-up data include, but not limited to: quality of life, functional performance, anxiety and depression, morbidity, mortality and amputation-free survival.

## **Study participants and eligibility**

### Eligibility & consent

All patients with SLI attending the Leicester Vascular Institute will be screened for their eligibility. Those eligible will be given verbal and written information detailing the nature of the study and time to decide whether they want to participate. Patients will be eligible for inclusion up until the point they undergo an intervention. Full written informed consent will be taken for patients agreeing to participate in the study. Consent will be gained to allow investigators to undertake additional assessments not routinely performed in this cohort of patients, as well as to review medical records for both baseline data and outcomes measured at various points during the 24 months following recruitment. Consent will also be taken for data-linkage with NHS digital records for long-term outcomes at 10 years post recruitment.

The researchers will have primary responsibility for assessing the capacity of the individual to participate in research according to the Mental Capacity Act 2005. Given the low risk and burden of this study to patients, it is reasonable to seek consultee consent in patients who do not have capacity. A 'hierarchy' of consent will be followed; this approach to the enrolment process has successfully been used in recent NIHR-funded studies.<sup>44</sup>

- 1  
2  
3 1. Potential patients with capacity are recruited, provided they are willing to provide  
4  
5 consent.  
6  
7
- 8 2. Where patients do not have capacity, they may be recruited using consultee  
9  
10 agreement (such as an unpaid carer or next of kin) under section 31(2) of the Mental  
11  
12 Capacity Act 2005.  
13
- 14 3. Checks will be made with the potential patient's GP or hospital records that there is  
15  
16 no relevant advance decision relating to research under section 33(2).  
17  
18
- 19 4. We will use a consultee under section 32(3) whenever possible.  
20  
21

22  
23 Personal consultees will be provided with verbal and written information detailing their role  
24  
25 and the nature of the study. They will be given time to decide whether they feel the patient  
26  
27 would want to participate in the study and have an opportunity to ask questions prior to  
28  
29 completing the personal consultee declaration form. Both the clinical and research team will  
30  
31 endeavour to identify a potential personal consultee for any eligible patient that lacks  
32  
33 capacity, however if one cannot be identified the patient will not be invited to participate in  
34  
35 the study.  
36  
37  
38  
39  
40

#### 41 Primary cohort

42  
43 All patients attending the Leicester Vascular Institute with a diagnosis of SLI will be  
44  
45 considered for inclusion to the study. SLI is defined as pain at night or at rest and/or  
46  
47 ulceration or gangrene in the affected limb(s) for a minimum of two weeks attributed to  
48  
49 confirmed PAOD.<sup>45</sup>  
50  
51

#### 52 Historical controls

53  
54 A retrospective cohort of historical controls with SLI will be identified for a 24 month period  
55  
56 (2013-2015) prior to establishing the Leicester Vascular Institute at the Glenfield Hospital  
57  
58  
59  
60

1  
2  
3 site. Approximately 420 patients with a primary admission diagnosis of SLI will be identified  
4  
5 from local coding data using the ICD-10 code I70.2. Hospital paper and electronic records  
6  
7 will be interrogated to identify baseline characteristics and outcomes including major  
8  
9 amputation. This will be cross-referenced against Trust Hospital Episode Statistics data for  
10  
11 major amputations (OPCS-4 code X09) to ensure accuracy.  
12  
13  
14  
15

### 16 Additional assessments

17  
18 Patients recruited to the primary cohort who are offered intervention (minor  
19  
20 amputation/debridement, revascularisation or primary major amputation) will also be given  
21  
22 the opportunity to participate in additional assessments, depending on them meeting the  
23  
24 inclusion/exclusion criteria. These additional assessments will investigate frailty and  
25  
26 cognitive impairment, and cardiac dysfunction on short- and medium-term outcomes.  
27  
28  
29

30 Patients undergoing intervention will also be eligible for venepuncture to collect serum and  
31  
32 plasma samples to establish a biobank for future biomarker analyses. Patients who are  
33  
34 treated medically with no planned intervention will be eligible for recruitment to the  
35  
36 primary cohort only.  
37  
38  
39  
40

### 41 Inclusion & Exclusion criteria

42  
43 Full inclusion and exclusion criteria are detailed in Table 1.  
44  
45  
46  
47  
48  
49  
50  
51  
52  
53  
54  
55  
56  
57  
58  
59  
60

Table 1: Inclusion &amp; Exclusion criteria

Primary Cohort	
<u>Inclusion criteria:</u>	<u>Exclusion criteria:</u>
<ul style="list-style-type: none"> <li>Patients presenting to the Leicester Vascular Institute with SLI</li> <li>Patients aged 18 – 110 years</li> </ul>	<ul style="list-style-type: none"> <li>SLI not caused by PAOD</li> <li>Patients undergoing intervention during their index presentation prior to recruitment</li> <li>Patients lacking capacity with no accompanying next of kin, relative, partner or friend who can act as a personal consultee</li> <li>Patients who cannot read, write or understand English</li> <li>Any significant disease or disorder which may either put the patients at risk because of participation in the study or may influence the results of the study or the patient's ability to participate in the study</li> </ul>
Frailty & cognitive impairment additional assessments	
<u>Inclusion criteria:</u>	<u>Exclusion criteria:</u>
<ul style="list-style-type: none"> <li>Patients recruited to the primary cohort in whom a decision has been made to undergo an intervention for SLI</li> <li>Patients aged &gt;65 years</li> </ul>	<ul style="list-style-type: none"> <li>No additional exclusion criteria</li> </ul>
Cardiac MRI additional assessments	
<u>Inclusion criteria:</u>	<u>Exclusion criteria:</u>
<ul style="list-style-type: none"> <li>Patients recruited to the primary cohort in whom a decision has been made to undergo an intervention for SLI</li> </ul>	<ul style="list-style-type: none"> <li>Absolute contraindications to cardiac MRI: <ul style="list-style-type: none"> <li>Pregnancy; non MR safe PPM/ICD; non MR safe intra-auricular implants; non MR safe intracranial clips; severe claustrophobia; unstable angina</li> </ul> </li> <li>Contraindication to gadolinium contrast agent: <ul style="list-style-type: none"> <li>Known adverse reaction; chronic renal failure (eGFR &lt;30mL/min/1.73m<sup>2</sup>)</li> </ul> </li> <li>Patients lacking capacity to consent for cardiac MRI</li> </ul>
Biomarkers additional assessments	
<u>Inclusion criteria:</u>	<u>Exclusion criteria:</u>
<ul style="list-style-type: none"> <li>Patients recruited to the primary cohort in whom a decision has been made to undergo an intervention for SLI</li> </ul>	<ul style="list-style-type: none"> <li>No additional exclusion criteria</li> </ul>

*eGFR, Estimated glomerular filtration rate; ICD, Implantable cardioverter-defibrillator; MRI, Magnetic resonance imaging; PAOD, Peripheral arterial occlusive disease; PPM, Permanent pacemaker; SLI, Severe limb ischaemia.*



## Study procedures

A study overview with potential recruitment numbers (based on local audit data 2018/19) is detailed in Figure 1. Eligible patients may be recruited to multiple additional assessments dependent upon their consent.

### Primary cohort

Baseline data will be collected from the standard admission proforma as part of routine attendance at the Leicester Vascular Institute, which includes:

- Presenting complaint
- Past medical history/comorbidities
- Social history (including smoking status)
- Current regular medications
- Observations
- Examination findings (lower limb pulses; Society of Vascular Surgery Wound, Ischaemia, foot Infection [WIFI] score;<sup>38</sup> Site, Ischaemia, Neuropathy, Bacterial infection, And Depth [SINBAD] score<sup>46</sup>)
- Ankle brachial pressure index (ABPI)
- Lower limb arterial duplex report
- Clinical Frailty Scale (CFS)<sup>47</sup>
- Vascular Quality of Life (VascuQoL) Questionnaire<sup>48</sup>

The following study data that will be collected in addition to routine clinic practice include:

- Barthel Activities of Daily Living (ADL) index<sup>49</sup>
- Hospital Anxiety and Depression Scale (HADS)<sup>50</sup>

1  
2  
3 At 12 months (+/- 1 month) patients will receive telephone follow-up to collect CFS, Barthel  
4  
5 ADL index, HADS, VascuQol and limb salvage data. These same data will be collected again  
6  
7 at 24 months (+/- 1 month). Electronic hospital records will be interrogated to collect data  
8  
9 regarding procedures patients have undergone for SLI during the 12 months post  
10  
11 recruitment.  
12  
13  
14  
15

16 A long-term data-linkage process will be employed once the first patient has been recruited.  
17  
18 This will provide mortality data for patients in the primary cohort and aid in project  
19  
20 management (i.e. not sending follow-up requests to deceased patients). After the two-year  
21  
22 follow-up period, patients in the primary cohort will be linked with NHS digital records to  
23  
24 provide long-term follow-up data for a total 10 year period following recruitment.  
25  
26  
27  
28

### 29 Frailty & cognitive impairment additional assessments

30  
31 Additional data collected at baseline will include:  
32  
33

- 34 • Edmonton Frail Scale (EFS)<sup>51</sup>
- 35 • Montreal Cognitive Assessment (MoCA)<sup>52</sup>
- 36 • Short Physical Performance Battery (SPPB)<sup>53</sup>
- 37 • Grip strength (bilateral) measured using a dynamometer
- 38 • Single Question in Delirium (SQiD)<sup>54</sup>
- 39 • 4 'A's Test (4AT) for rapid delirium screening<sup>55</sup>
- 40
- 41
- 42
- 43
- 44
- 45
- 46
- 47
- 48
- 49

50 At 24 and 72 hours post-operatively patients will undergo screening for delirium using both  
51  
52 the SQiD and 4AT. Patients who have been discharged from hospital prior to 24 and/or 72  
53  
54 hours post-operatively will undergo screening for delirium via telephone using the SQiD only  
55  
56 (asking a relative or carer).  
57  
58  
59  
60

1  
2  
3 At 3 months (+/- 1 month) and 12 months (+/- 1 months) patients will attend a follow-up  
4  
5 clinic where the following assessments will be undertaken: CFS, EFS, MoCA, SPPB, grip  
6  
7 strength, Barthel ADL index, VascuQoL and HADS. No additional telephone follow-up will be  
8  
9 required at 12 months as all relevant assessments will be undertaken during the 12 month  
10  
11 clinic visit.  
12  
13

14  
15  
16 For patients who agree to participate in the frailty and cognitive impairment additional  
17  
18 assessment, advanced consent will be gained to undertake delirium assessments post-  
19  
20 operatively. It is possible that during the course of the follow-up period, patients may lose  
21  
22 capacity before completing the study follow-up. Accordingly, advanced consent will be  
23  
24 gained at the point of recruitment to undertake all the required assessments during follow-  
25  
26 up. In the event that a patient loses capacity during the course of the study, a personal  
27  
28 consultee will be sought to both confirm ongoing participation in the study and help  
29  
30 complete the follow-up assessments.  
31  
32  
33  
34  
35

### 36 Cardiac MRI additional assessments

37  
38 The cardiac MR scan will be performed on a 3T scanner (Siemens Skyra or Vida) using a 32ch  
39  
40 cardiac coil. The MRI protocol is outlined in Figure 2 and will include<sup>56</sup>:  
41  
42  
43

- 44 i. Left ventricular (LV) function cine imaging
- 45
- 46 ii. Adenosine and/or dobutamine stress and rest perfusion imaging
- 47
- 48 iii. Late gadolinium enhancement
- 49
- 50 iv. If time permits and the patient is able to tolerate the scan, additional sequences
- 51
- 52 such as aortic distensibility and angiography may be performed.
- 53  
54  
55

56  
57 Patients will be fully counselled about the procedure (which may cause slight discomfort  
58  
59 and claustrophobia) and written consent gained prior to the MRI scan. A standard MRI  
60

1  
2  
3 safety questionnaire will be completed prior to the scan to ensure the safety requirements  
4  
5 are satisfied. A 12-lead ECG will be performed within 72 hours prior to the cardiac MRI scan.  
6  
7

8  
9 Two intravenous cannulae will be inserted for administration of adenosine or dobutamine  
10  
11 and gadolinium contrast agent. Patients may receive intravenous sedation if they are  
12  
13 anxious or claustrophobic. Adenosine will be administered at 140µg/kg/min, limited to 3-4  
14  
15 minutes to minimise patient discomfort. If there is no haemodynamic response and/or the  
16  
17 patient does not experience any effects, the infusion may be prolonged or the dose may be  
18  
19 increased incrementally to 210µg/kg/min (at the discretion of the supervising physician). In  
20  
21 patients with an absolute contraindication to adenosine (severe asthma/COPD, high degree  
22  
23 of atrioventricular block, theophylline usage) dobutamine/atropine will be administered as  
24  
25 the stressor agent. The dose of dobutamine will commence at 20µg/kg/min for those with  
26  
27 preserved ejection (10µg/kg/min for patients with significant LV dysfunction) and increased  
28  
29 incrementally until age-predicted target heart rate is reached ( $\geq 85\%$  of 220-age beats per  
30  
31 minute). It is anticipated the maximum dose administered will be 30µg/kg/min.<sup>57</sup> Atropine,  
32  
33 0.6-1.8mg, may be used to achieve predicted maximum heart rate. Chest pain, arrhythmias  
34  
35 and induction of wall motion abnormality are indications to stop the infusion and a patient's  
36  
37 heart rate and blood pressure will be monitored closely. Patients will be reassured  
38  
39 throughout and it will be made clear they can stop the MRI scan at any time.  
40  
41  
42  
43  
44  
45  
46  
47

48  
49 Cardiac MR analysis will be both qualitative and quantitative. Local on-site reporting will  
50  
51 include any regional motion abnormality by visual analysis using the 17-segment AHA  
52  
53 model,<sup>58</sup> and each segment will be scored as 0 (normal), 1 (mild hypokinesia), 2 (severe  
54  
55 hypokinesia), 3 (akinesia), or 4 (dyskinesia). Hypoperfusion (ischaemia) will be assessed by a  
56  
57 visual comparison of stress and rest cardiac MR perfusion scan in 16 of the 17 AHA model  
58  
59  
60

1  
2  
3 segments (excluding the apical cap segment) with scores of: 0 (normal), 1 (equivocal), 2  
4 (subendocardial ischaemia), or 3 (transmural ischaemia). Any infarct (scar) will be reported  
5  
6 based on the late gadolinium-enhancement images (17 segment AHA model) with scores of  
7  
8 0 (none), 1 (1-25%), 2 (26-50%), 3 (51-75%), or 4 (>75%) for each segment. Patients who  
9  
10 undergo open surgical revascularisation or major lower limb amputation (major surgery) will  
11  
12 undergo an additional follow-up scan at 2-4 months post-operatively to investigate for  
13  
14 incidence of peri-operative myocardial infarction.<sup>59</sup>  
15  
16  
17  
18  
19  
20

21 All patients undergoing cardiac MRI will be consented to have an additional axial image at  
22  
23 the level of the 3<sup>rd</sup> lumbar vertebrae during the initial scan only, which will be performed  
24  
25 before the cardiac sequences. This will image psoas, paraspinal and abdominal wall muscles  
26  
27 allowing the total skeletal muscle areas to be measured as assessments of sarcopenia.<sup>60</sup>  
28  
29  
30

### 31 Biomarkers additional assessments

32  
33 Venepuncture will be performed by a qualified member of the research team and blood  
34  
35 collected using an S-Monovette® 9ml K2 EDTA blood tube and an S-Monovette® 7.5ml  
36  
37 Serum Gel blood tube with the aim of collecting 6 x 500µL aliquots of both serum and  
38  
39 plasma. All samples will be stored at the NIHR Leicester Biomedical Research Centre located  
40  
41 at Glenfield Hospital for subsequent analysis. Consent will be gained to use these samples in  
42  
43 future biomarker analyses. All samples will be anonymously data-linked with clinical  
44  
45 baseline and outcome data for patients recruited to the biomarkers additional assessments.  
46  
47  
48  
49  
50

### 51 Study assessment schedule

52 An overview of study procedures and assessment schedule is detailed in Table 2.  
53  
54  
55  
56  
57  
58  
59  
60

Table 2: Study procedures and patient assessment schedule

Procedure/assessment	Baseline	24 hrs post intervention	72 hrs post intervention	3 month F/U visit	12 month F/U visit	12 month telephone F/U	24 month telephone F/U
Patient consent/ consultee declaration	•						
Clinical frailty scale	•			•	•	•	•
Barthel Index	•			•	•	•	•
VascuQoL	•			•	•	•	•
HADS	•			•	•	•	•
Edmonton frail scale	•			•	•		
MoCA	•			•	•		
SPPB	•			•	•		
Grip strength	•			•	•		
SQID	•	•	•				
4AT	•	•	•				
Cardiac MRI	•			•			
Blood sample collection	•						

4AT, 4 'A's Test (4AT) for rapid delirium screening; HADS, Hospital Anxiety and Depression Scale; MoCA, Montreal Cognitive Assessment; MRI, Magnetic Resonance Imaging; SQID, Single Question in Delirium; VascuQoL, Vascular Quality of Life questionnaire.

1  
2  
3 *Additional assessments:* Frailty & cognitive; Cardiac MRI; Biomarkers.  
4  
5  
6  
7  
8  
9  
10  
11  
12  
13  
14  
15  
16  
17  
18  
19  
20  
21  
22  
23  
24  
25  
26  
27  
28  
29  
30  
31  
32  
33  
34  
35  
36  
37  
38  
39  
40  
41  
42  
43  
44  
45  
46

For peer review only

### Definition of end of study

The end of study date is defined by the date the long-term outcomes are collected from NHS digital, which will be ongoing for 10 years following the date the final patient is recruited to the primary cohort.

### Discontinuation/withdrawal from the study

A patient, or personal consultee, may withdraw from the study at any point without giving any reason with no effect to their medical care or legal rights. This will be explained at recruitment and each follow-up contact. If the patient (or personal consultee) withdrawing from the study voluntarily offers a reason for their withdrawal this will be documented in the medical notes and collected as part of the research data. Patient data collected up to the point of withdrawal will be used in the analysis unless the patient (or personal consultee) has withdrawn consent for all data to be used. Similarly if they withdraw consent for blood samples to be used prior to analysis these will be destroyed. Long-term data will be collected via data-linkage unless consent is withdrawn.

### Study patient and public involvement (PPI) group

A PPI group involving patients, and their carers, with experience of being treated for SLI at the Leicester Vascular Institute has been established for this study. Members of the PPI group have been directly involved in the development of the study, the information material and provided insight on the burden of the study from a patient's perspective. The group will continue to meet throughout the duration of the study to be informed of the progress and have the opportunity to advise regarding the ongoing delivery of the study.

### Planned study dates



1  
2  
3 The study began on 10<sup>th</sup> May 2019 and recruitment will continue until the 9<sup>th</sup> May 2021. The  
4  
5 study will end on 9<sup>th</sup> May 2031 after completion of 10-year follow-up via NHS digital.  
6  
7

## 8 **Data & analysis**

9  
10 Study data will be collected and managed using REDCap (Research Electronic Data Capture)  
11  
12 hosted at the University of Leicester.<sup>61</sup> REDCap is a secure, web-based application designed  
13  
14 to support data capture for research studies.  
15  
16  
17

18  
19 A full statistical analysis plan will be written and agreed by all investigators before database  
20  
21 lock. A range of continuous and categorical data will be collected at baseline and at various  
22  
23 time points on the patients recruited into the primary cohort and the additional  
24  
25 assessments. Descriptive statistics of the baseline data will be presented using appropriate  
26  
27 tabular and graphical methods both for the prospective cohort and the historical controls.  
28  
29 Comparability of the cohorts in terms of baseline characteristics will be assessed using  
30  
31 appropriate statistical tests, for example t-tests for continuous variables and chi square tests  
32  
33 for categorical.  
34  
35  
36  
37  
38

39 The proportion of patients undergoing a major amputation within the first 12 months will be  
40  
41 calculated and presented with 95% confidence intervals (95% CI). The prospective cohort  
42  
43 will be compared to the historical controls using logistic regression with major amputation  
44  
45 within 12 months as the dependent variable. Given there maybe systematic differences  
46  
47 between the prospective and historical cohorts adjustment for propensity score will be  
48  
49 used. The propensity score model will include all baseline characteristics available in both  
50  
51 cohorts as independent variables with cohort (prospective/historical) as the dependent  
52  
53 variable. The final form of the propensity score model will specified in the statistical  
54  
55 analysis plan prior to analysis commencing. The model will be run both unadjusted and  
56  
57  
58  
59  
60

1  
2  
3 adjusted for the propensity score. An adjustment for propensity score, rather than  
4  
5 propensity score matching, will be used to ensure that all participants are included in the  
6  
7 analysis.<sup>62 63</sup>  
8  
9

10  
11 A similar modelling strategy will be employed to assess the association between  
12  
13 interventions (amputation versus no amputation) and short-, medium- and long-term  
14  
15 outcomes. Cox proportional hazards modelling will be used to assess association with both  
16  
17 mortality and amputation free survival. The prevalence (95% CI) will also be calculated for  
18  
19 frailty, cognitive impairment, and cardiac disease (detected by stress MRI).  
20  
21  
22

23  
24 The assumptions of all models fitted will be assessed. The levels and reasons for missing  
25  
26 data for all key outcomes and confounders will be assessed. Where more than 5% of data  
27  
28 are missing, multiple imputation will be used. Where less than 5% are missing a complete  
29  
30 case analysis will be performed.  
31  
32

33  
34 Statistical analyses will be two-sided with a 5% significance level.  
35  
36

### 37 Sample size calculation

38  
39 The historical amputation rate among patients with SLI is around 25%.<sup>4</sup> We anticipate a  
40  
41 reduction in amputation rate among this contemporary cohort in the region of 10%. A  
42  
43 sample size of 335 patients will be required to detect a 10% reduction in amputation rate in  
44  
45 comparison to a similar sized historical cohort, with 90% power and type-I error rate of 5%.  
46  
47  
48

49 The target sample size will be 420 patients to account for a potential loss to follow-up of  
50  
51 20%. A minimum of 335 patients in the contemporary cohort will enable an estimate of  
52  
53 amputation rate of 15% with a 95% confidence interval of 11.3-19.2%, which is clinically  
54  
55 acceptable.  
56  
57  
58  
59  
60

## **Ethics & dissemination**

This study has received ethical approval from the UK National Research Ethics Service (19/LO/0132). The study sponsor is the University of Leicester and all their standard operating procedures will be followed ensuring this study complies with all relevant legislation and guidelines. Direct access will be granted to authorised representatives from the sponsor, host institution and regulatory authorities to permit study related monitoring, audit and inspection. The Chief Investigator (RS) will ensure that this study is conducted in full conformity with the Declaration of Helsinki (last amended October 2013).

As this is not considered a high-risk study, adverse events or adverse reactions will not be reported. There are many serious adverse events (SAEs) that are reasonably expected in this group of patients. Expected SAEs (Supplementary File 1) that are unrelated to the study will not be reported. All unexpected SAEs and serious adverse reactions (SARs) related to the study will be documented on the SAE form and reported to the sponsor within 24 hours of the investigator becoming aware of the event.

A summary of findings will be available to patients on request. It is the intention to disseminate any findings from the study at relevant national and international meetings and in peer-reviewed medical journals. Results will also be distributed through social media and in plain language using our University accounts to increase access to the general public. All clinicians and researchers involved will be acknowledged in written papers. For each output a writing team will be convened from the study group and external collaborators (where necessary). Authorship will be decided on a paper-by-paper basis. Anonymised study data will be available on request to the Chief Investigator (RS).

## **Discussion**

The results of this study should provide a valuable update to current observational evidence regarding contemporary outcomes of patients with SLI. The additional assessments will also provide useful observational evidence, which may help risk-stratify patients both in terms of risk of amputation and mortality based on frailty, cognitive impairment and cardiac MRI findings. Future biomarker analyses of samples collected during the study may also provide evidence for established and novel biomarkers in the risk-stratification of patients with SLI. The facility to include patients without capacity to consent will reduce selection bias and should provide far more representative data particularly regarding older patients with SLI, and the prevalence of frailty and cognitive impairment in this cohort.

## **Limitations**

There are a number of limitations to this study. As this is a single-centre study the generalisability of the results will be limited, particularly as amputation rate will be impacted on by local management strategies and patient demographics. Additionally, there is not the resource to provide for recruitment of non-English speaking patients. Whilst we do not anticipate significant numbers of patients will be excluded for this reason, as Leicester has an ethnically diverse population, results from this study may not be reflective of the whole population.

Prospective data has not been collected for patients with SLI presenting prior to the establishment of the rapid-access limb salvage clinic and improved SLI and DFD management pathways: subsequently data will be retrospectively collected for a historical cohort to compare amputation rates. Any observed differences in amputation rates may therefore be due to factors other than modern revascularisation techniques and improved

1  
2  
3 care pathways. Statistical analyses with adjustment for propensity score may mitigate this  
4  
5 to a degree, however any observed effect may still be liable to unidentified confounding.  
6  
7  
8 Furthermore, retrospective data collected will not be as reliable as the data from the  
9  
10 prospective cohort limiting the comparison between the two cohorts, however it is difficult  
11  
12 to determine whether this may under- or over-estimate the amputation rate in the  
13  
14 historical cohort prior to completing historical data collection. Frailty, cognitive function,  
15  
16 cardiac MRI and biomarker analysis will not be available for patients in the historical cohort  
17  
18 so no comparisons will be possible.  
19  
20  
21  
22

### 23 **Conclusion**

24  
25  
26 The LIMb study will report the current amputation rate in patients presenting with severe  
27  
28 limb ischaemia. It aims to quantify the impact of a rapid-access vascular limb salvage clinic  
29  
30 and improved management pathways on amputation rate, and the potential role for cardiac  
31  
32 MR, frailty and cognitive assessments, and biomarker analysis in risk stratifying patients  
33  
34 undergoing intervention for SLI.  
35  
36  
37  
38  
39  
40  
41  
42  
43  
44  
45  
46  
47  
48  
49  
50  
51  
52  
53  
54  
55  
56  
57  
58  
59  
60

## References

1. Fowkes FGR, Rudan D, Rudan I, et al. Comparison of global estimates of prevalence and risk factors for peripheral artery disease in 2000 and 2010: a systematic review and analysis. *The Lancet* 2013;382(9901):1329-40. doi: 10.1016/S0140-6736(13)61249-0
2. Criqui M, Aboyans V. Epidemiology of peripheral artery disease. *Circulation research* 2015;116(9):1509.
3. Becker F, Robert-Ebadi H, Ricco JB, et al. Chapter I: Definitions, epidemiology, clinical presentation and prognosis. *Eur J Vasc Endovasc Surg* 2011;42 Suppl 2:S4-12. doi: 10.1016/S1078-5884(11)60009-9
4. Norgren L, Hiatt WR, Dormandy JA, et al. Inter-Society Consensus for the Management of Peripheral Arterial Disease (TASC II). *J Vasc Surg* 2007;45 Suppl S:S5-67. doi: 10.1016/j.jvs.2006.12.037 [published Online First: 2007/01/16]
5. Ahmad N, Thomas GN, Gill P, et al. The prevalence of major lower limb amputation in the diabetic and non-diabetic population of England 2003–2013. *Diabetes and Vascular Disease Research* 2016;13(5):348-53. doi: 10.1177/1479164116651390
6. Kerr M. Diabetic foot care in England: an economic study: Diabetes UK; 2017 [Available from: <https://diabetes-resources-production.s3-eu-west-1.amazonaws.com/diabetes-storage/migration/pdf/Diabetic%2520footcare%2520in%2520England%2C%2520An%2520economic%2520case%2520study%2520%28January%25202017%29.pdf>].
7. Jeffcoate W, Bakker K. World Diabetes Day: footing the bill. *The Lancet* 2005;365(9470):1527. doi: 10.1016/S0140-6736(05)66437-9
8. Davie-Smith F, Coulter E, Kennon B, et al. Factors influencing quality of life following lower limb amputation for peripheral arterial occlusive disease: A systematic review

- 1  
2  
3 of the literature. *Prosthetics and Orthotics International* 2017;41(6):537-47. doi:  
4  
5 10.1177/0309364617690394  
6  
7
- 8 9. Suckow BD, Goodney PP, Cambria RA, et al. Predicting functional status following  
9  
10 amputation after lower extremity bypass. *Annals of vascular surgery* 2012;26(1):67-  
11  
12 78.  
13  
14
- 15 10. Naylor H, Russell P, Thompson J. Development of a scoring tool (BLARt score) to predict  
16  
17 functional outcome in lower limb amputees AU - Bowrey, Sarah. *Disability and*  
18  
19 *Rehabilitation* 2018:1-9. doi: 10.1080/09638288.2018.1466201  
20  
21  
22
- 23 11. Takeji Y, Yamaji K, Tomoi Y, et al. Impact of Frailty on Clinical Outcomes in Patients With  
24  
25 Critical Limb Ischemia. *Circulation Cardiovascular interventions* 2018;11(7):e006778.  
26  
27 doi: 10.1161/CIRCINTERVENTIONS.118.006778  
28  
29
- 30 12. Hubbard RE, Story DA. Patient frailty: the elephant in the operating room. *Anaesthesia*  
31  
32 2014;69 Suppl 1:26-34. doi: 10.1111/anae.12490 [published Online First:  
33  
34 2013/12/16]  
35  
36
- 37 13. Morley JE, Vellas B, van Kan GA, et al. Frailty Consensus: A Call to Action. *Journal of the*  
38  
39 *American Medical Directors Association* 2013;14(6):392-97. doi:  
40  
41 10.1016/j.jamda.2013.03.022  
42  
43  
44
- 45 14. Gale CR, Cooper C, Aihie Sayer A. Prevalence of frailty and disability: findings from the  
46  
47 English Longitudinal Study of Ageing. *Age and Ageing* 2015;44(1):162-65. doi:  
48  
49 10.1093/ageing/afu148  
50  
51
- 52 15. Partridge JSL, Fuller M, Harari D, et al. Frailty and poor functional status are common in  
53  
54 arterial vascular surgical patients and affect postoperative outcomes. *International*  
55  
56 *Journal of Surgery* 2015;18:57-63. doi: 10.1016/j.ijsu.2015.04.037  
57  
58  
59  
60

- 1  
2  
3 16. Xue Q-L. The Frailty Syndrome: Definition and Natural History. *Clinics in geriatric*  
4  
5 *medicine* 2011;27(1):1-15. doi: 10.1016/j.cger.2010.08.009  
6  
7
- 8 17. Wang J, Zou Y, Zhao J, et al. The Impact of Frailty on Outcomes of Elderly Patients After  
9  
10 Major Vascular Surgery: A Systematic Review and Meta-analysis. *European Journal of*  
11  
12 *Vascular and Endovascular Surgery* 2018 doi:  
13  
14 <http://dx.doi.org/10.1016/j.ejvs.2018.07.012>  
15  
16
- 17 18. de Vries NM, Staal JB, van Ravensberg CD, et al. Outcome instruments to measure  
18  
19 frailty: A systematic review. *Ageing Research Reviews* 2011;10(1):104-14. doi:  
20  
21 <https://doi.org/10.1016/j.arr.2010.09.001>  
22  
23
- 24 19. Robertson DA, Savva GM, Kenny RA. Frailty and cognitive impairment—A review of the  
25  
26 evidence and causal mechanisms. *Ageing Research Reviews* 2013;12(4):840-51. doi:  
27  
28 <https://doi.org/10.1016/j.arr.2013.06.004>  
29  
30
- 31 20. Partridge JSL, Dhesi JK, Cross JD, et al. The prevalence and impact of undiagnosed  
32  
33 cognitive impairment in older vascular surgical patients. *Journal of Vascular Surgery*  
34  
35 2014;60(4):1002. doi: <http://dx.doi.org/10.1016/j.jvs.2014.04.041>  
36  
37  
38
- 39 21. Fried LP, Tangen CM, Walston J, et al. Frailty in older adults: evidence for a phenotype. *J*  
40  
41 *Gerontol A Biol Sci Med Sci* 2001;56(3):M146-56. [published Online First:  
42  
43 2001/03/17]  
44  
45
- 46 22. Cruz-Jentoft AJ, Bahat G, Bauer J, et al. Sarcopenia: revised European consensus on  
47  
48 definition and diagnosis. *Age and Ageing* 2019;48(1):16-31. doi:  
49  
50 10.1093/ageing/afy169  
51  
52  
53
- 54 23. Reeve TE, Ur R, Craven TE, et al. Grip strength measurement for frailty assessment in  
55  
56 patients with vascular disease and associations with comorbidity, cardiac risk, and  
57  
58  
59  
60



- 1  
2  
3 sarcopenia. *Journal of vascular surgery* 2018;67(5):1512-20. doi:  
4  
5 10.1016/j.jvs.2017.08.078  
6  
7
- 8 24. Matsubara Y, Matsumoto T, Inoue K, et al. Sarcopenia is a risk factor for cardiovascular  
9  
10 events experienced by patients with critical limb ischemia. *Journal of Vascular*  
11  
12 *Surgery* 2017;65(5):1390-97. doi: <http://dx.doi.org/10.1016/j.jvs.2016.09.030>  
13  
14
- 15 25. Pol RA, Van Leeuwen BL, Visser L, et al. Standardised frailty indicator as predictor for  
16  
17 postoperative delirium after vascular surgery: A prospective cohort study. *European*  
18  
19 *Journal of Vascular and Endovascular Surgery* 2011;42(6):824-30. doi:  
20  
21 <http://dx.doi.org/10.1016/j.ejvs.2011.07.006>  
22  
23
- 24 26. Visser L, Prent A, van der Laan MJ, et al. Predicting postoperative delirium after vascular  
25  
26 surgical procedures. *Journal of Vascular Surgery* 2015;62(1):183-89. doi:  
27  
28 <https://doi.org/10.1016/j.jvs.2015.01.041>  
29  
30
- 31 27. Hertzner NR. Clinical experience with preoperative coronary angiography. *Journal of*  
32  
33 *Vascular Surgery* 1985;2(3):510-12. doi: 10.1016/0741-5214(85)90115-6  
34  
35
- 36 28. Her K, Choi C, Park Y, et al. Concomitant peripheral artery disease and asymptomatic  
37  
38 coronary artery disease: a management strategy. *Annals of vascular surgery*  
39  
40 2008;22(5):649-56.  
41  
42
- 43 29. Pande RL, Perlstein TS, Beckman JA, et al. Secondary prevention and mortality in  
44  
45 peripheral artery disease: National Health and Nutrition Examination Study, 1999 to  
46  
47 2004. *Circulation* 2011;124(1):17-23. doi: 10.1161/circulationaha.110.003954  
48  
49 [published Online First: 2011/06/22]  
50  
51
- 52 30. Landesberg G, Mosseri M, Wolf YG, et al. Preoperative thallium scanning, selective  
53  
54 coronary revascularization, and long-term survival after major vascular surgery.  
55  
56  
57  
58  
59  
60

- 1  
2  
3 *Circulation* 2003;108(2):177-83. doi: 10.1161/01.cir.0000080292.11186.fb [published  
4  
5 Online First: 2003/07/02]  
6  
7
- 8 31. Wagner A, Mahrholdt H, Holly TA, et al. Contrast-enhanced MRI and routine single  
9  
10 photon emission computed tomography (SPECT) perfusion imaging for detection of  
11  
12 subendocardial myocardial infarcts: an imaging study. *The Lancet*  
13  
14 2003;361(9355):374-79. doi: 10.1016/s0140-6736(03)12389-6  
15  
16
- 17 32. Khoo JP, Grundy BJ, Steadman CD, et al. Stress cardiovascular MR in routine clinical  
18  
19 practice: referral patterns, accuracy, tolerance, safety and incidental findings. *The*  
20  
21 *British journal of radiology* 2012;85(1018):e851-7. doi: 10.1259/bjr/14829242  
22  
23 [published Online First: 2012/03/30]  
24  
25
- 26 33. Greenwood JP, Ripley DP, Berry C, et al. Effect of Care Guided by Cardiovascular  
27  
28 Magnetic Resonance, Myocardial Perfusion Scintigraphy, or NICE Guidelines on  
29  
30 Subsequent Unnecessary Angiography Rates: The CE-MARC 2 Randomized Clinical  
31  
32 Trial. *JAMA : the journal of the American Medical Association* 2016;316(10):1051-60.  
33  
34 doi: 10.1001/jama.2016.12680 [published Online First: 2016/08/30]  
35  
36  
37
- 38 34. Greenwood JP, Maredia N, Younger JF, et al. Cardiovascular magnetic resonance and  
39  
40 single-photon emission computed tomography for diagnosis of coronary heart  
41  
42 disease (CE-MARC): a prospective trial. *Lancet* 2012;379(9814):453-60. doi:  
43  
44 10.1016/S0140-6736(11)61335-4 [published Online First: 2011/12/27]  
45  
46  
47
- 48 35. Xue H, Inati S, Sorensen TS, et al. Distributed MRI reconstruction using Gadgetron-based  
49  
50 cloud computing. *Magnetic resonance in medicine : official journal of the Society of*  
51  
52 *Magnetic Resonance in Medicine / Society of Magnetic Resonance in Medicine*  
53  
54 2015;73(3):1015-25. doi: 10.1002/mrm.25213 [published Online First: 2014/04/02]  
55  
56  
57  
58  
59  
60

- 1  
2  
3 36. Kellman P, Hansen MS, Nielles-Vallespin S, et al. Myocardial perfusion cardiovascular  
4  
5 magnetic resonance: optimized dual sequence and reconstruction for quantification.  
6  
7  
8 *Journal of cardiovascular magnetic resonance : official journal of the Society for*  
9  
10 *Cardiovascular Magnetic Resonance* 2017;19(1):43. doi: 10.1186/s12968-017-0355-5  
11  
12 [published Online First: 2017/04/08]  
13  
14  
15 37. Engblom H, Xue H, Akil S, et al. Fully quantitative cardiovascular magnetic resonance  
16  
17 myocardial perfusion ready for clinical use: a comparison between cardiovascular  
18  
19 magnetic resonance imaging and positron emission tomography. *Journal of*  
20  
21 *cardiovascular magnetic resonance : official journal of the Society for Cardiovascular*  
22  
23 *Magnetic Resonance* 2017;19(1):78. doi: 10.1186/s12968-017-0388-9 [published  
24  
25 Online First: 2017/10/20]  
26  
27  
28  
29 38. Mills JL, Sr., Conte MS, Armstrong DG, et al. The Society for Vascular Surgery Lower  
30  
31 Extremity Threatened Limb Classification System: risk stratification based on wound,  
32  
33 ischemia, and foot infection (WIFI). *J Vasc Surg* 2014;59(1):220-34 e1-2. doi:  
34  
35 10.1016/j.jvs.2013.08.003 [published Online First: 2013/10/16]  
36  
37  
38  
39 39. Aboyans V, Ricco JB, Bartelink MEL, et al. 2017 ESC Guidelines on the Diagnosis and  
40  
41 Treatment of Peripheral Arterial Diseases, in collaboration with the European Society  
42  
43 for Vascular Surgery (ESVS): Document covering atherosclerotic disease of  
44  
45 extracranial carotid and vertebral, mesenteric, renal, upper and lower extremity  
46  
47 arteries Endorsed by: the European Stroke Organization (ESO) The Task Force for the  
48  
49 Diagnosis and Treatment of Peripheral Arterial Diseases of the European Society of  
50  
51 Cardiology (ESC) and of the European Society for Vascular Surgery (ESVS). *Eur Heart J*  
52  
53 2018;39(9):763-816. doi: 10.1093/eurheartj/ehx095 [published Online First:  
54  
55 2017/09/10]  
56  
57  
58  
59  
60

- 1  
2  
3 40. Breen P, Simpson S, Packer C. New and emerging angioplasty technologies in  
4  
5 development for severe lower limb ischaemia. Birmingham, UK: The NIHR Horizon  
6  
7 Scanning Research & Intelligence Centre University of Birmingham, 2016.  
8  
9
- 10 41. Slim H, Tiwari A, Ahmed A, et al. Distal versus Ultradistal Bypass Grafts: Amputation-free  
11  
12 Survival and Patency Rates in Patients with Critical Leg Ischaemia. *European Journal*  
13  
14 *of Vascular and Endovascular Surgery* 2011;42(1):83-88. doi:  
15  
16 <https://doi.org/10.1016/j.ejvs.2011.03.016>  
17  
18
- 19 42. Taeymans K, Groot Jebbink E, Holewijn S, et al. Three-year outcome of the covered  
20  
21 endovascular reconstruction of the aortic bifurcation technique for aortoiliac  
22  
23 occlusive disease. *Journal of Vascular Surgery* 2018;67(5):1438-47. doi:  
24  
25 <https://doi.org/10.1016/j.jvs.2017.09.015>  
26  
27
- 28 43. Boyle J, Brooks M, Biram R, et al. A Best Practic Clinical Care Pathway for Peripheral  
29  
30 Arterial Disease London, UK: The Vascular Society of Great Britain & Ireland; 2019  
31  
32 [Available from:  
33  
34 [https://www.vascularsociety.org.uk/\\_userfiles/pages/files/Newsletters/PAD%20QIF](https://www.vascularsociety.org.uk/_userfiles/pages/files/Newsletters/PAD%20QIF%20April%202019(1).pdf)  
35  
36 [%20April%202019\(1\).pdf](https://www.vascularsociety.org.uk/_userfiles/pages/files/Newsletters/PAD%20QIF%20April%202019(1).pdf) accessed 12th April 2019.  
37  
38  
39
- 40 44. Edmans J, Bradshaw L, Gladman JRF, et al. The Identification of Seniors at Risk (ISAR)  
41  
42 score to predict clinical outcomes and health service costs in older people discharged  
43  
44 from UK acute medical units. *Age and ageing* 2013;42(6):747-53. doi:  
45  
46 10.1093/ageing/aft054 [published Online First: 05/10]  
47  
48  
49
- 50 45. Adam DJ, Beard JD, Cleveland T, et al. Bypass versus angioplasty in severe ischaemia of  
51  
52 the leg (BASIL): multicentre, randomised controlled trial. *Lancet*  
53  
54 2005;366(9501):1925-34. doi: 10.1016/s0140-6736(05)67704-5 [published Online  
55  
56 First: 2005/12/06]  
57  
58  
59  
60

- 1  
2  
3 46. Ince P, Abbas ZG, Lutale JK, et al. Use of the SINBAD classification system and score in  
4  
5 comparing outcome of foot ulcer management on three continents. *Diabetes Care*  
6  
7 2008;31(5):964-7. doi: 10.2337/dc07-2367 [published Online First: 2008/02/27]  
8  
9  
10 47. Rockwood K, Song X, MacKnight C, et al. A global clinical measure of fitness and frailty in  
11  
12 elderly people. *CMAJ* 2005;173(5):489-95. doi: 10.1503/cmaj.050051 [published  
13  
14 Online First: 2005/09/01]  
15  
16  
17 48. Morgan MB, Crayford T, Murrin B, et al. Developing the Vascular Quality of Life  
18  
19 Questionnaire: a new disease-specific quality of life measure for use in lower limb  
20  
21 ischemia. *J Vasc Surg* 2001;33(4):679-87. doi: 10.1067/mva.2001.112326 [published  
22  
23 Online First: 2001/04/11]  
24  
25  
26 49. Collin C, Wade DT, Davies S, et al. The Barthel ADL Index: A reliability study. *International*  
27  
28 *Disability Studies* 1988;10(2):61-63. doi: 10.3109/09638288809164103  
29  
30  
31 50. Zigmond AS, Snaith RP. The hospital anxiety and depression scale. *Acta psychiatrica*  
32  
33 *scandinavica* 1983;67(6):361-70.  
34  
35  
36 51. Rolfson DB, Majumdar SR, Tsuyuki RT, et al. Validity and reliability of the Edmonton Frail  
37  
38 Scale. *Age and Ageing* 2006;35(5):526-29. doi: 10.1093/ageing/afl041  
39  
40  
41 52. Nasreddine ZS, Phillips NA, Bédirian V, et al. The Montreal Cognitive Assessment, MoCA:  
42  
43 a brief screening tool for mild cognitive impairment. *Journal of the American*  
44  
45 *Geriatrics Society* 2005;53(4):695-99.  
46  
47  
48 53. Guralnik JM, Simonsick EM, Ferrucci L, et al. A short physical performance battery  
49  
50 assessing lower extremity function: association with self-reported disability and  
51  
52 prediction of mortality and nursing home admission. *Journal of gerontology*  
53  
54 1994;49(2):M85-M94.  
55  
56  
57  
58  
59  
60

- 1  
2  
3 54. Sands MB, Dantoc BP, Hartshorn A, et al. Single question in delirium (SQiD): testing its  
4  
5 efficacy against psychiatrist interview, the confusion assessment method and the  
6  
7 memorial delirium assessment scale. *Palliative Medicine* 2010;24(6):561-65.  
8  
9
- 10 55. Bellelli G, Morandi A, Davis DH, et al. Validation of the 4AT, a new instrument for rapid  
11  
12 delirium screening: a study in 234 hospitalised older people. *Age Ageing*  
13  
14 2014;43(4):496-502. doi: 10.1093/ageing/afu021 [published Online First:  
15  
16 2014/03/05]  
17  
18  
19
- 20 56. Singh A, Greenwood JP, Berry C, et al. Comparison of exercise testing and CMR  
21  
22 measured myocardial perfusion reserve for predicting outcome in asymptomatic  
23  
24 aortic stenosis: the PRognostic Importance of MIcrovascular Dysfunction in Aortic  
25  
26 Stenosis (PRIMID AS) Study. *European heart journal* 2017;38(16):1222-29. doi:  
27  
28 10.1093/eurheartj/ehx001 [published Online First: 2017/02/17]  
29  
30  
31
- 32 57. Mordi I, Stanton T, Carrick D, et al. Comprehensive dobutamine stress CMR versus  
33  
34 echocardiography in LBBB and suspected coronary artery disease. *JACC Cardiovasc*  
35  
36 *Imaging* 2014;7(5):490-8. doi: 10.1016/j.jcmg.2014.01.012 [published Online First:  
37  
38 2014/04/15]  
39  
40  
41
- 42 58. Cerqueira MD, Weissman NJ, Dilsizian V, et al. Standardized myocardial segmentation  
43  
44 and nomenclature for tomographic imaging of the heart. A statement for healthcare  
45  
46 professionals from the Cardiac Imaging Committee of the Council on Clinical  
47  
48 Cardiology of the American Heart Association. *Circulation* 2002;105(4):539-42.  
49  
50  
51 [published Online First: 2002/01/30]  
52  
53
- 54 59. Rahimi K, Banning AP, Cheng AS, et al. Prognostic value of coronary revascularisation-  
55  
56 related myocardial injury: a cardiac magnetic resonance imaging study. *Heart*  
57  
58  
59  
60

2009;95(23):1937-43. doi: 10.1136/hrt.2009.173302 [published Online First:  
2009/08/19]

60. Kays JK, Liang TW, Zimmers TA, et al. Sarcopenia is a significant predictor of mortality after abdominal aortic aneurysm repair. *JCSM Clinical Reports* 2018;3(1)

61. Harris PA, Taylor R, Thielke R, et al. Research electronic data capture (REDCap)--a metadata-driven methodology and workflow process for providing translational research informatics support. *J Biomed Inform* 2009;42(2):377-81. doi: 10.1016/j.jbi.2008.08.010 [published Online First: 2008/10/22]

62. Austin PC. An Introduction to Propensity Score Methods for Reducing the Effects of Confounding in Observational Studies. *Multivariate Behav Res* 2011;46(3):399-424. doi: 10.1080/00273171.2011.568786 [published Online First: 2011/06/08]

63. Lim J, Walley R, Yuan J, et al. Minimizing Patient Burden Through the Use of Historical Subject-Level Data in Innovative Confirmatory Clinical Trials: Review of Methods and Opportunities. *Therapeutic Innovation & Regulatory Science* 2018;52(5):546-59. doi: 10.1177/2168479018778282

## **Figure Legends**

Figure 1: Study overview. Numbers are estimates for the whole two-year recruitment period and based on local audit data from 2018/19.

MRI, Magnetic resonance imaging.

Figure 2: Cardiac MRI protocol including Dixon function for abdominal visceral and subcutaneous fat.

L3, 3rd Lumbar vertebra; 4/3/2 Ch, 4/3/2 chamber; SAO, sagittal oblique.



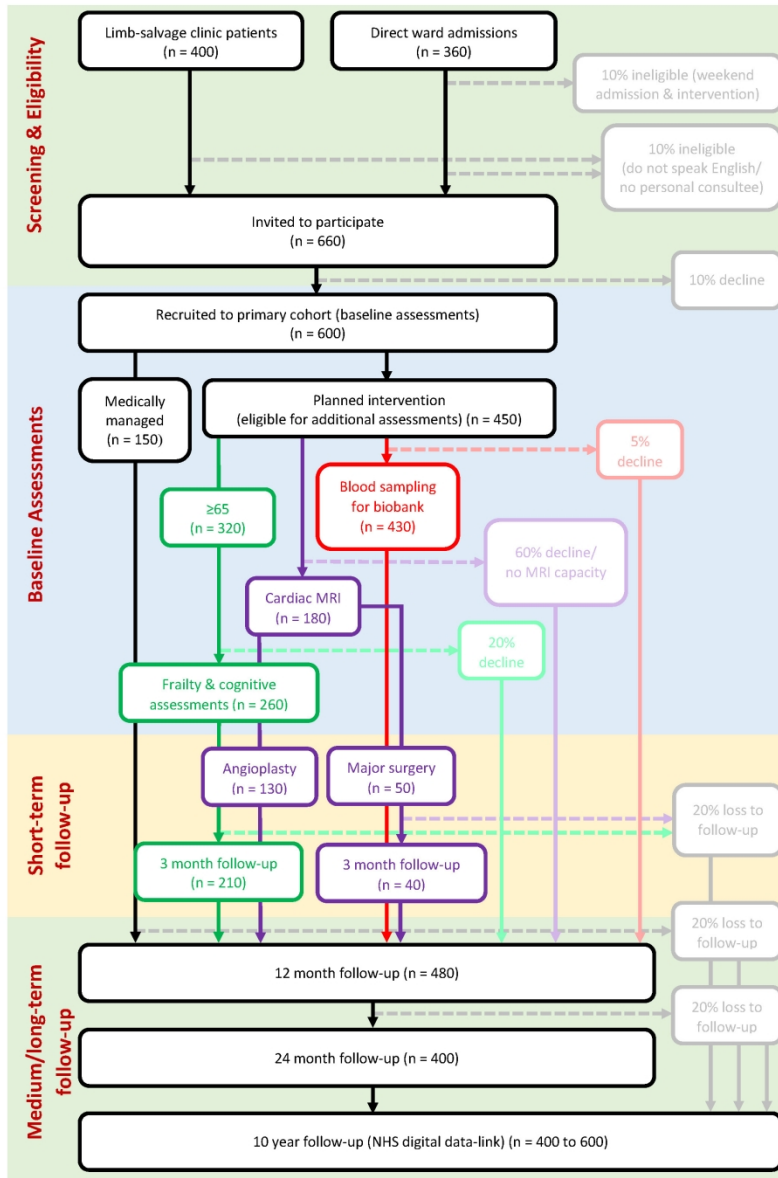


Figure 1: Study overview. Numbers are estimates for the whole two-year recruitment period and based on local audit data from 2018/19. MRI, Magnetic resonance imaging.

182x271mm (300 x 300 DPI)

1  
2  
3  
4  
5  
6  
7  
8  
9  
10  
11  
12  
13  
14  
15  
16  
17  
18  
19  
20  
21  
22  
23  
24  
25  
26  
27  
28  
29  
30  
31  
32  
33  
34  
35  
36  
37  
38  
39  
40  
41  
42  
43  
44  
45  
46  
47  
48  
49  
50  
51  
52  
53  
54  
55  
56  
57  
58  
59  
60

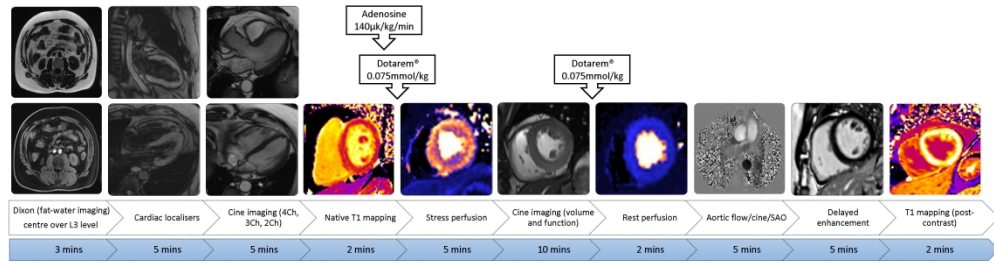


Figure 2: Cardiac MRI protocol including Dixon function for abdominal visceral and subcutaneous fat. L3, 3rd Lumbar vertebra; 4/3/2 Ch, 4/3/2 chamber; SAO, sagittal oblique.

338x91mm (300 x 300 DPI)

## **Expected adverse events and serious adverse events**

### **Cardiac**

Angina  
Ankle swelling and  
peripheral oedema  
Arrhythmias  
Cardiac arrest  
Cardiac failure  
Myocardial infarction  
Palpitations  
Poor exercise tolerance  
Shortness of breath  
Tiredness and exhaustion

### **Respiratory**

Chest infection  
Cough  
Exacerbation of COPD  
Pneumonia  
Pulmonary embolus  
Respiratory failure

### **Leg problems**

Bruising  
Cellulitis  
Debridement of leg/foot  
wound  
DVT  
Foot amputation  
Haematoma  
Lymph leak  
Minor amputation of toes  
Osteomyelitis of  
leg/foot/toes  
Pain  
Phlebitis  
Wound breakdown  
Wound infection

### **Diabetes**

Drug reactions  
Hyperglycaemia  
Hypoglycaemia  
Infections  
Injections site problems  
Neuropathy

### **General**

Abdominal pain  
Anxiety  
Arm / hand pain  
Backache  
Breast lumps  
Breast pain  
Cellulitis  
Constipation  
Delirium  
Depression  
Diarrhoea  
Earache  
Falls  
Fractures  
Gastrointestinal bleeding  
Gastro-oesophageal  
reflux disease  
Gynaecological bleeding  
Head injury  
Headache  
Indigestion  
Influenza  
Intra-abdominal  
infections and sepsis  
Jaundice  
Joint inflammation  
Joint pain  
Leg/foot pain  
Liver disease  
Malaise  
Malignancy  
Neck and spine pain  
Neck pain  
Necrotising fasciitis  
Nose bleeds  
Osteoarthritis  
Other forms of arthritis  
Parkinson disease  
Pelvic pain  
Peptic ulcer disease  
Piles and perianal disease  
Prostatism  
Psychiatric illness

Rectal bleeding  
Renal impairment  
Sciatica  
Skin lesions  
Skin rashes  
Soft tissue inflammation  
Stress  
Stroke  
Transient ischaemic  
attack  
Toothache  
Urinary retention  
Urinary tract infection  
Vomiting

# BMJ Open

## Leg Ischaemia Management collaboration (LIMb): study protocol for a prospective cohort study at a single UK centre

Journal:	<i>BMJ Open</i>
Manuscript ID	bmjopen-2019-031257.R2
Article Type:	Protocol
Date Submitted by the Author:	26-Jul-2019
Complete List of Authors:	Houghton, John; University of Leicester, Department of Cardiovascular Sciences Nduwayo, Sarah; University of Leicester, Department of Cardiovascular Sciences Nickinson, Andrew; University of Leicester, Department of Cardiovascular Sciences Payne, Tanya; University of Leicester, Department of Cardiovascular Sciences Sterland, Sue; University of Leicester, Department of Cardiovascular Sciences Nath, Mintu; University of Leicester, Department of Cardiovascular Sciences Gray, Laura; University of Leicester, Department of Health Sciences McMahon, Greg; University Hospitals of Leicester NHS Trust, Leicester Vascular Institute Rayt, Harjeet; University Hospitals of Leicester NHS Trust, Leicester Vascular Institute Singh, Sally; University Hospitals of Leicester NHS Trust, Cardiac/Pulmonary Rehabilitation Robinson, Thompson; University of Leicester, Department of Cardiovascular Sciences Conroy, Simon; University of Leicester, Department of Health Sciences Haunton, Victoria; University of Leicester, Department of Cardiovascular Sciences McCann, Gerry; University of Leicester, Department of Cardiovascular Sciences Bown, Matthew; University of Leicester, Department of Cardiovascular Sciences Davies, Robert; University Hospitals of Leicester NHS Trust, Leicester Vascular Institute Sayers, Rob; University of Leicester, Department of Cardiovascular Sciences
<b>Primary Subject Heading</b>:	Surgery
Secondary Subject Heading:	Cardiovascular medicine, Geriatric medicine
Keywords:	VASCULAR SURGERY, Peripheral Arterial Disease, Limb Salvage, Frailty, Delirium & cognitive disorders < PSYCHIATRY, Cardiovascular imaging < RADIOLOGY & IMAGING

1  
2  
3  
4  
5  
6  
7  
8  
9  
10  
11  
12  
13  
14  
15  
16  
17  
18  
19  
20  
21  
22  
23  
24  
25  
26  
27  
28  
29  
30  
31  
32  
33  
34  
35  
36  
37  
38  
39  
40  
41  
42  
43  
44  
45  
46  
47  
48  
49  
50  
51  
52  
53  
54  
55  
56  
57  
58  
59  
60



SCHOLARONE™  
Manuscripts

1  
2  
3  
4 **Title: Leg Ischaemia Management collaboration (LIMb): study protocol**  
5  
6  
7 **for a prospective cohort study at a single UK centre**  
8  
9

10 **Authors:** J.S.M. Houghton<sup>1,2,3</sup> (corresponding author), S. Nduwayo<sup>1,2,3</sup>, A. Nickinson<sup>1,2,3</sup>, T. J. Payne<sup>1,3</sup>,  
11  
12 S. Sterland<sup>1,3</sup>, M. Nath<sup>1,3</sup>, L.J. Gray<sup>4</sup>, G. McMahon<sup>1,2</sup>, H.S. Rayt<sup>1,2</sup>, S. Singh<sup>2</sup>, T. Robinson<sup>1,3</sup>, S.  
13  
14 P. Conroy<sup>4</sup>, V.J. Haunton<sup>1</sup>, G.P. McCann<sup>1,3</sup>, M.J. Bown<sup>1,2,3</sup>, R.S.M. Davies<sup>1,2</sup> and R.D. Sayers<sup>1,2,3</sup>  
15  
16

17 **Author affiliations:** <sup>1</sup>Department of Cardiovascular Sciences, University of Leicester, <sup>2</sup>  
18  
19 Leicester Vascular Institute, University Hospitals of Leicester NHS Trust, <sup>3</sup>National Institute  
20  
21 for Health Research Leicester Biomedical Research Centre –The Glenfield Hospital, Leicester,  
22  
23 and <sup>4</sup>Department of Health Sciences, University of Leicester, Leicester, UK  
24  
25  
26

27  
28 **Keywords:** Peripheral arterial disease, Limb salvage, Frailty, Cognitive dysfunction,  
29  
30 Myocardial perfusion imaging, Biomarkers  
31  
32

33 **Correspondence to:** Mr John Houghton, Cardiovascular Research Centre, University of  
34  
35 Leicester, Glenfield Hospital, Groby Road, Leicester, LE3 9QP (email:  
36  
37 john.houghton@nhs.net)  
38  
39

40  
41 **Author contributions:** All authors contributed to the study design. J.S.M.H. contributed to  
42  
43 writing the study protocol and drafted and revised the paper. S.N., A.N., S.S., S.P.C., V.J.H.  
44  
45 and G.P.M. contributed to writing the study protocol and revised the draft paper. T.J.P. is  
46  
47 the study manager, edited the study protocol and revised the draft paper. S.S. wrote the  
48  
49 data analysis plan and study database, and revised the draft paper. M.N. and L.J.G. wrote  
50  
51 the statistical analysis plan and revised the draft paper. G.M., H.R., T.R., and M.J.B. revised  
52  
53 the draft paper. R.S.M.D. is principle investigator and revised the draft paper. R.D.S. is chief  
54  
55 investigator, wrote the study protocol and revised the draft paper.  
56  
57  
58  
59  
60

1  
2  
3 **Acknowledgements:** The authors would like to thank George Davies and the George Davies  
4  
5 Charitable Trust for the generous charitable donation that funded this study, Natasha  
6  
7 Bryant for the development of the data capture and management procedures, and Gaurav  
8  
9 Gulsin for providing the research images of the cardiac MR sequence.  
10  
11

12  
13 **Data sharing statement:** Anonymised dataset will be available on request to the Chief  
14  
15 Investigator (R. Sayers).  
16  
17

18  
19 **Funding statement:** The LIMb study and LIMb investigators J. Houghton, A. Nickinson, S.  
20  
21 Nduwayo and T. Payne are funded, and R. Sayers part-funded, by a charitable donation from  
22  
23 the George Davies Charitable Trust (Registered Charity Number: 1024818) and supported by  
24  
25 the NIHR Leicester Biomedical Research Centre. G. McCann is funded by a NIHR Research  
26  
27 Professorship (2017-08-ST2-007). T. Robinson is an NIHR senior Investigator.  
28  
29  
30

31  
32 **Competing interests statement:** R. Davies has acted as a speaker for Gore Medical and has  
33  
34 received educational grants from Terumo/Aortic outside the submitted work.  
35  
36

37 **Study protocol**  
38  
39  
40  
41  
42  
43  
44  
45  
46  
47  
48  
49  
50  
51  
52  
53  
54  
55  
56  
57  
58  
59  
60

## **Abstract**

### **Introduction**

Severe limb ischaemia (SLI) is the end-stage of peripheral arterial occlusive disease where the viability of the limb is threatened. Around 25% of patients with SLI will ultimately require a major lower limb amputation which has a substantial adverse impact on quality of life. A newly established rapid-access vascular limb salvage clinic and modern revascularisation techniques may reduce amputation rate. The aim of this study is to investigate the 12-month amputation rate in a contemporary cohort of patients and compare this to a historical cohort. Secondary aims are to investigate the use of frailty and cognitive assessments, and cardiac MRI in risk-stratifying patients with SLI undergoing intervention and establish a biobank for future biomarker analyses.

### **Methods & analysis**

This single-centre prospective cohort study will recruit patients aged 18-110 years presenting with SLI. Those undergoing intervention will be eligible to undergo additional venepuncture (for biomarker analysis) and/or cardiac MRI. Those aged  $\geq 65$  years and undergoing intervention will also be eligible to undergo additional frailty and cognitive assessments. Follow-up will be at 12 and 24 months and subsequently via data-linkage with NHS digital to 10 years post-recruitment. Those undergoing cardiac MRI and/or frailty assessments will receive additional follow-up during the first 12 months to investigate for peri-operative myocardial infarction and frailty related outcomes, respectively. A sample size of 420 patients will be required to detect a 10% reduction in amputation rate in comparison to a similar sized historical cohort, with 90% power and 5% type-I error rate.



1  
2  
3 Statistical analysis of this comparison will be by adjusted and unadjusted logistic regression  
4  
5 analyses.  
6  
7

### 8 **Ethics & dissemination**

9  
10  
11 Ethical approval for this study has been granted by the UK National Research Ethics Service  
12  
13 (19/LO/0132). Results will be disseminated to participants, via scientific meetings, peer-  
14  
15 reviewed medical journals and social media.  
16  
17

### 18 **Study registration**

19  
20  
21  
22  
23 ClinicalTrials.gov [NCT04027244]  
24  
25  
26  
27  
28

29 Abstract word count: 298  
30  
31

32 Manuscript word count: 4,654  
33  
34  
35  
36  
37  
38  
39  
40  
41  
42  
43  
44  
45  
46  
47  
48  
49  
50  
51  
52  
53  
54  
55  
56  
57  
58  
59  
60

## **Article summary**

### **Strengths & limitations of this study**

- This prospective study of a contemporary cohort of patients with severe limb ischaemia (including both patients with and without diabetes) will provide a valuable update to observational evidence.
- The inclusion of patients lacking capacity reduces potential selection bias.
- The use of comprehensive assessments of frailty syndromes and cardiac MRI may provide valuable additional strategies to assess risk.
- The single-centre study design will limit the generalisability of its results.
- The retrospective collection of historical control data and observational nature of the study will limit the strength of evidence of the results.

## **Introduction**

Peripheral arterial occlusive disease (PAOD) is a chronic condition caused by atherosclerosis of arteries supplying the lower limbs. In high-income countries its prevalence is over 10% in those aged over 65.<sup>1</sup> PAOD is often asymptomatic but as the disease progresses patients may develop symptoms such as intermittent claudication.<sup>2</sup> Severe limb ischaemia (SLI) is the end-stage of PAOD in which the viability of the limb is threatened due to the degree of arterial disease and subsequent ischaemia in the peripheral tissues, and is characterised by ischaemic rest pain and tissue necrosis, leading to ulceration and gangrene.<sup>3</sup> Treatment options include open surgical and endovascular revascularisation, with or without amputation of toes, surgical drainage of infection and debridement of infected/necrotic tissue. In some patients revascularisation is not possible and primary major lower limb amputation, or amputation after failed attempted revascularisation, is required.<sup>4</sup>

Lower limb amputation is a life-changing tragedy for the patient and a huge financial burden to the NHS. Between 2003 and 2013 over 4000 major lower limb amputations were performed each year in England alone.<sup>5</sup> With the rising prevalence of diabetes and diabetic foot disease (DFD), a diabetes-related major lower limb amputation is performed every 30 seconds worldwide and over 7000 diabetes-related major and minor amputations are now performed each year in England and Wales.<sup>6,7</sup> Major lower limb amputation negatively affects quality of life due to its significant impact on mobility, independence, social isolation and ability to carry out activities of daily living.<sup>8</sup> Only around 20% of those undergoing an amputation for PAOD are independently ambulant one-year post procedure.<sup>9,10</sup>

### Frailty, cognitive impairment and delirium

A major challenge in managing patients with SLI is decision making regarding optimum treatment strategies. As well as anatomical considerations regarding revascularisation strategy, an accurate assessment of both the risk of treatment failure and morbidity associated with a procedure should be taken into account. This is particularly challenging in patients with SLI as they are often elderly with multiple comorbidities.<sup>11</sup> Frailty is a distinct health state and is increasingly recognised as a major contributor to adverse outcomes in surgical patients.<sup>12</sup> Frailty is defined as “a medical syndrome with multiple causes and contributors that is characterized by diminished strength, endurance, and reduced physiologic function that increases an individual’s vulnerability for developing increased dependency and/or death”.<sup>13</sup> Around 10% of people aged over 65 years are frail, increasing to more than 30% of those aged over 85, whilst prevalence of frailty in patients with SLI may be over 50%.<sup>11 14 15</sup> Frail patients are less able to respond to acute stressors, such as major surgery, and are therefore more susceptible to adverse health outcomes such as mortality and post-operative complications.<sup>16 17</sup> Multiple validated tools used to assess patients for frailty have been developed which can be utilised in pre-operative assessment.<sup>13 18</sup>

Both cognitive impairment and sarcopenia are also of interest in this cohort as they are associated with frailty, vascular disease and vascular risk factors.<sup>19-21</sup> Cognitive impairment, encompassing a spectrum of diseases from mild cognitive impairment to dementia, manifests as memory problems, poor concentration and difficulty making decisions about things affecting everyday life. Sarcopenia is a “progressive and generalised skeletal muscle disorder that is associated with increased likelihood of adverse outcomes” and defined as low muscle strength plus low muscle quantity or quality and/or low physical performance.<sup>22</sup> Sarcopenia has been assessed both clinically and radiologically (using cross-sectional

1  
2  
3 imaging) in vascular patients.<sup>23 24</sup> Frailty, cognitive impairment and sarcopenia have been  
4  
5 implicated in worse outcome following vascular surgery.<sup>17</sup> Post-operative delirium is one  
6  
7 such outcome which has been shown to be associated both with frailty in vascular patients  
8  
9 and worse short- and long-term outcome following vascular surgery.<sup>25 26</sup>  
10  
11

### 12 13 Coronary artery disease (CAD)

14  
15 CAD is a highly prevalent and major co-morbidity of patients with PAOD. Very few vascular  
16  
17 surgery patients have normal coronary arteries on coronary angiography.<sup>27</sup> Coronary  
18  
19 angiography has also shown that around 60% of vascular surgery patients have severe CAD  
20  
21 (>70% stenosis), and in those without symptoms or history of ischaemic heart disease  
22  
23 undergoing vascular surgery, around 70% have evidence of CAD, half of whom have severe  
24  
25 disease.<sup>27 28</sup> Patients with PAOD have a 20-60% increased risk for myocardial infarction (MI)  
26  
27 and a two- to six-fold increased risk of death due to CAD related events.<sup>29</sup> Peri-operative MI  
28  
29 (based on elevated troponin) has been reported in up to 24% of vascular patients, with 82%  
30  
31 of these not exhibiting symptoms.<sup>30</sup>  
32  
33  
34  
35  
36  
37

38  
39 Cardiac magnetic resonance imaging (MRI) is the most sensitive imaging modality for the  
40  
41 detection of myocardial necrosis/infarct and is highly accurate for the detection of  
42  
43 reversible ischaemia in a single examination.<sup>31-34</sup> Modern software allows images to be  
44  
45 acquired completely free-breathing, using motion-correction techniques and highly  
46  
47 accelerated sequences, which is particularly important for the frail or breathless patient.<sup>35 36</sup>  
48  
49 In addition myocardial blood flow can be quantified fully automatically within minutes of  
50  
51 acquisition allowing measurement of stress and rest myocardial blood flow and perfusion  
52  
53 reserve.<sup>37</sup> The identification of significant cardiac disease in these patients may allow  
54  
55  
56  
57  
58  
59  
60

1  
2  
3 further risk assessment and stratification to ensure that each patient has an optimum  
4  
5 treatment plan.  
6  
7

## 8 **Rationale**

9  
10  
11 The most widely cited estimates of outcomes in patients with SLI are from the Trans-Atlantic  
12  
13 Consensus Statement II (2007) which state that 50% will initially undergo revascularisation  
14  
15 and 25% primary amputation, and at one-year 30% will be alive and have had an  
16  
17 amputation whilst 25% will have died.<sup>4</sup> In recent years there has been a marked  
18  
19 demographic shift with increasing prevalence of diabetes among patients with SLI and  
20  
21 intervention in older, frailer patients.<sup>11 38</sup> Whilst there has been little change in  
22  
23 recommended medical therapy of PAOD,<sup>4 39</sup> new endovascular technologies and improved  
24  
25 techniques such as ultra-distal bypass and Covered Endovascular Revascularisation of Aortic  
26  
27 Bifurcation (CERAB) allow increasingly aggressive revascularisation strategies.<sup>40-42</sup> The  
28  
29 Leicester Vascular Institute (based at Glenfield Hospital, University Hospitals of Leicester  
30  
31 NHS Trust) is a tertiary referral vascular unit providing all vascular services for Leicestershire  
32  
33 and Rutland, comprising a diverse population of approximately 1.1 million. Both a  
34  
35 recently established rapid-access limb salvage clinic, and direct vascular admission for all  
36  
37 patients admitted as an emergency for DFD, aim to improve outcomes in patients with SLI  
38  
39 and ultimately reduce the need for major lower limb amputation in line with recent  
40  
41 guidelines from The Vascular Society of Great Britain and Ireland.<sup>43</sup> A contemporary cohort  
42  
43 study will provide useful evidence of outcomes in the context of current SLI demographics,  
44  
45 revascularisation strategies and improved care pathways. Additionally, this prospective  
46  
47 cohort study provides an opportunity to make a detailed assessment of frailty, cognitive  
48  
49 impairment, and ischaemic heart disease (as detected by cardiac MR) in patients with SLI, as  
50  
51  
52  
53  
54  
55  
56  
57  
58  
59  
60

1  
2  
3 well as establish a biobank for future biomarker analysis, to establish each of their roles in  
4  
5 risk stratifying patients undergoing intervention for SLI.  
6  
7

## 8 **Study aims**

### 9 Primary aim

10  
11 The primary aim of this study is to determine the proportion of patients with SLI undergoing  
12  
13 major lower limb amputation within 12 months of presentation. The primary hypothesis is  
14  
15 that contemporary amputation rate is lower than historical data.  
16  
17  
18  
19

### 20 Secondary aims

21  
22 Secondary aims are to assess clinically important short- ( $\leq 3$ -months), medium- (3-12  
23  
24 months) and long-term ( $> 12$  months) outcomes in those undergoing and not undergoing  
25  
26 amputation. We also aim to determine prevalence and degree of frailty, cognitive  
27  
28 impairment, and cardiac disease (detected by stress MRI), as well as establish a biobank for  
29  
30 future analysis of biomarkers, in those patients undergoing procedures for SLI. This may  
31  
32 allow risk stratification, and also to investigate whether patients with a higher risk of poor  
33  
34 peri-operative outcome or long-term worse prognosis are undergoing procedures with  
35  
36 increased risk of morbidity and mortality.  
37  
38  
39  
40  
41  
42  
43  
44

## 45 **Methods & analysis**

### 46 **Study design**

47  
48 This study will be a single-centre prospective observational cohort study undertaken at the  
49  
50 Leicester Vascular Institute. Recruitment will continue for a period of 2 years with a total of  
51  
52 10 years follow-up.  
53  
54  
55  
56  
57  
58  
59  
60

### Primary outcome measure

The primary outcome measure of the study is major amputation rate.

### Secondary outcome measures

Secondary outcome measures for short-, medium- and long-term follow-up data include, but not limited to: quality of life, functional performance, anxiety and depression, morbidity, mortality and amputation-free survival.

## **Study participants and eligibility**

### Eligibility & consent

All patients with SLI attending the Leicester Vascular Institute will be screened for their eligibility. Those eligible will be given verbal and written information detailing the nature of the study and time to decide whether they want to participate. Patients will be eligible for inclusion up until the point they undergo an intervention. Full written informed consent will be taken for patients agreeing to participate in the study. Consent will be gained to allow investigators to undertake additional assessments not routinely performed in this cohort of patients, as well as to review medical records for both baseline data and outcomes measured at various points during the 24 months following recruitment. Consent will also be taken for data-linkage with NHS digital records for long-term outcomes at 10 years post recruitment.

The researchers will have primary responsibility for assessing the capacity of the individual to participate in research according to the Mental Capacity Act 2005. Given the low risk and burden of this study to patients, it is reasonable to seek consultee consent in patients who do not have capacity. A 'hierarchy' of consent will be followed; this approach to the enrolment process has successfully been used in recent NIHR-funded studies.<sup>44</sup>



- 1  
2  
3 1. Potential patients with capacity are recruited, provided they are willing to provide  
4  
5 consent.  
6  
7
- 8 2. Where patients do not have capacity, they may be recruited using consultee  
9  
10 agreement (such as an unpaid carer or next of kin) under section 31(2) of the Mental  
11  
12 Capacity Act 2005.  
13
- 14 3. Checks will be made with the potential patient's GP or hospital records that there is  
15  
16 no relevant advance decision relating to research under section 33(2).  
17  
18
- 19 4. We will use a consultee under section 32(3) whenever possible.  
20  
21

22  
23 Personal consultees will be provided with verbal and written information detailing their role  
24  
25 and the nature of the study. They will be given time to decide whether they feel the patient  
26  
27 would want to participate in the study and have an opportunity to ask questions prior to  
28  
29 completing the personal consultee declaration form. Both the clinical and research team will  
30  
31 endeavour to identify a potential personal consultee for any eligible patient that lacks  
32  
33 capacity, however if one cannot be identified the patient will not be invited to participate in  
34  
35 the study.  
36  
37  
38  
39  
40

#### 41 Primary cohort

42  
43 All patients attending the Leicester Vascular Institute with a diagnosis of SLI will be  
44  
45 considered for inclusion to the study. SLI is defined as pain at night or at rest and/or  
46  
47 ulceration or gangrene in the affected limb(s) for a minimum of two weeks attributed to  
48  
49 confirmed PAOD.<sup>45</sup>  
50  
51

#### 52 Historical controls

53  
54 A retrospective cohort of historical controls with SLI will be identified for a 24 month period  
55  
56 (2013-2015) prior to establishing the Leicester Vascular Institute at the Glenfield Hospital  
57  
58  
59  
60

1  
2  
3 site. Approximately 420 patients with a primary admission diagnosis of SLI will be identified  
4  
5 from local coding data using the ICD-10 code I70.2. Hospital paper and electronic records  
6  
7 will be interrogated to identify baseline characteristics and outcomes including major  
8  
9 amputation. This will be cross-referenced against Trust Hospital Episode Statistics data for  
10  
11 major amputations (OPCS-4 code X09) to ensure accuracy.  
12  
13  
14  
15

### 16 Additional assessments

17  
18 Patients recruited to the primary cohort who are offered intervention (minor  
19  
20 amputation/debridement, revascularisation or primary major amputation) will also be given  
21  
22 the opportunity to participate in additional assessments, depending on them meeting the  
23  
24 inclusion/exclusion criteria. These additional assessments will investigate frailty and  
25  
26 cognitive impairment, and cardiac dysfunction on short- and medium-term outcomes.  
27  
28  
29

30 Patients undergoing intervention will also be eligible for venepuncture to collect serum and  
31  
32 plasma samples to establish a biobank for future biomarker analyses. Patients who are  
33  
34 treated medically with no planned intervention will be eligible for recruitment to the  
35  
36 primary cohort only.  
37  
38  
39  
40

### 41 Inclusion & Exclusion criteria

42  
43 Full inclusion and exclusion criteria are detailed in Table 1.  
44  
45  
46  
47  
48  
49  
50  
51  
52  
53  
54  
55  
56  
57  
58  
59  
60

Table 1: Inclusion &amp; Exclusion criteria

Primary Cohort	
<u>Inclusion criteria:</u>	<u>Exclusion criteria:</u>
<ul style="list-style-type: none"> <li>Patients presenting to the Leicester Vascular Institute with SLI</li> <li>Patients aged 18 – 110 years</li> </ul>	<ul style="list-style-type: none"> <li>SLI not caused by PAOD</li> <li>Patients undergoing intervention during their index presentation prior to recruitment</li> <li>Patients lacking capacity with no accompanying next of kin, relative, partner or friend who can act as a personal consultee</li> <li>Patients who cannot read, write or understand English</li> <li>Any significant disease or disorder which may either put the patients at risk because of participation in the study or may influence the results of the study or the patient's ability to participate in the study</li> </ul>
Frailty & cognitive impairment additional assessments	
<u>Inclusion criteria:</u>	<u>Exclusion criteria:</u>
<ul style="list-style-type: none"> <li>Patients recruited to the primary cohort in whom a decision has been made to undergo an intervention for SLI</li> <li>Patients aged &gt;65 years</li> </ul>	<ul style="list-style-type: none"> <li>No additional exclusion criteria</li> </ul>
Cardiac MRI additional assessments	
<u>Inclusion criteria:</u>	<u>Exclusion criteria:</u>
<ul style="list-style-type: none"> <li>Patients recruited to the primary cohort in whom a decision has been made to undergo an intervention for SLI</li> </ul>	<ul style="list-style-type: none"> <li>Absolute contraindications to cardiac MRI: <ul style="list-style-type: none"> <li>Pregnancy; non MR safe PPM/ICD; non MR safe intra-auricular implants; non MR safe intracranial clips; severe claustrophobia; unstable angina</li> </ul> </li> <li>Contraindication to gadolinium contrast agent: <ul style="list-style-type: none"> <li>Known adverse reaction; chronic renal failure (eGFR &lt;30mL/min/1.73m<sup>2</sup>)</li> </ul> </li> <li>Patients lacking capacity to consent for cardiac MRI</li> </ul>
Biomarkers additional assessments	
<u>Inclusion criteria:</u>	<u>Exclusion criteria:</u>
<ul style="list-style-type: none"> <li>Patients recruited to the primary cohort in whom a decision has been made to undergo an intervention for SLI</li> </ul>	<ul style="list-style-type: none"> <li>No additional exclusion criteria</li> </ul>

*eGFR, Estimated glomerular filtration rate; ICD, Implantable cardioverter-defibrillator; MRI, Magnetic resonance imaging; PAOD, Peripheral arterial occlusive disease; PPM, Permanent pacemaker; SLI, Severe limb ischaemia.*

## Study procedures

A study overview with potential recruitment numbers (based on local audit data 2018/19) is detailed in Figure 1. Eligible patients may be recruited to multiple additional assessments dependent upon their consent.

### Primary cohort

Baseline data will be collected from the standard admission proforma as part of routine attendance at the Leicester Vascular Institute, which includes:

- Presenting complaint
- Past medical history/comorbidities
- Social history (including smoking status)
- Current regular medications
- Observations
- Examination findings (lower limb pulses; Society of Vascular Surgery Wound, Ischaemia, foot Infection [WIFI] score;<sup>38</sup> Site, Ischaemia, Neuropathy, Bacterial infection, And Depth [SINBAD] score<sup>46</sup>)
- Ankle brachial pressure index (ABPI)
- Lower limb arterial duplex report
- Clinical Frailty Scale (CFS)<sup>47</sup>
- Vascular Quality of Life (VascuQoL) Questionnaire<sup>48</sup>

The following study data that will be collected in addition to routine clinic practice include:

- Barthel Activities of Daily Living (ADL) index<sup>49</sup>
- Hospital Anxiety and Depression Scale (HADS)<sup>50</sup>

1  
2  
3 At 12 months (+/- 1 month) patients will receive telephone follow-up to collect CFS, Barthel  
4  
5 ADL index, HADS, VascuQol and limb salvage data. These same data will be collected again  
6  
7 at 24 months (+/- 1 month). Electronic hospital records will be interrogated to collect data  
8  
9 regarding procedures patients have undergone for SLI during the 12 months post  
10  
11 recruitment.  
12  
13  
14  
15

16 A long-term data-linkage process will be employed once the first patient has been recruited.  
17  
18 This will provide mortality data for patients in the primary cohort and aid in project  
19  
20 management (i.e. not sending follow-up requests to deceased patients). After the two-year  
21  
22 follow-up period, patients in the primary cohort will be linked with NHS digital records to  
23  
24 provide long-term follow-up data for a total 10 year period following recruitment.  
25  
26  
27  
28

### 29 Frailty & cognitive impairment additional assessments

30  
31 Additional data collected at baseline will include:  
32  
33

- 34 • Edmonton Frail Scale (EFS)<sup>51</sup>
- 35 • Montreal Cognitive Assessment (MoCA)<sup>52</sup>
- 36 • Short Physical Performance Battery (SPPB)<sup>53</sup>
- 37 • Grip strength (bilateral) measured using a dynamometer
- 38 • Single Question in Delirium (SQiD)<sup>54</sup>
- 39 • 4 'A's Test (4AT) for rapid delirium screening<sup>55</sup>
- 40
- 41
- 42
- 43
- 44
- 45
- 46
- 47
- 48
- 49

50 At 24 and 72 hours post-operatively patients will undergo screening for delirium using both  
51  
52 the SQiD and 4AT. Patients who have been discharged from hospital prior to 24 and/or 72  
53  
54 hours post-operatively will undergo screening for delirium via telephone using the SQiD only  
55  
56 (asking a relative or carer).  
57  
58  
59  
60

1  
2  
3 At 3 months (+/- 1 month) and 12 months (+/- 1 months) patients will attend a follow-up  
4  
5 clinic where the following assessments will be undertaken: CFS, EFS, MoCA, SPPB, grip  
6  
7 strength, Barthel ADL index, VascuQoL and HADS. No additional telephone follow-up will be  
8  
9 required at 12 months as all relevant assessments will be undertaken during the 12 month  
10  
11 clinic visit.  
12  
13

14  
15  
16 For patients who agree to participate in the frailty and cognitive impairment additional  
17  
18 assessment, advanced consent will be gained to undertake delirium assessments post-  
19  
20 operatively. It is possible that during the course of the follow-up period, patients may lose  
21  
22 capacity before completing the study follow-up. Accordingly, advanced consent will be  
23  
24 gained at the point of recruitment to undertake all the required assessments during follow-  
25  
26 up. In the event that a patient loses capacity during the course of the study, a personal  
27  
28 consultee will be sought to both confirm ongoing participation in the study and help  
29  
30 complete the follow-up assessments.  
31  
32  
33

### 34 35 36 Cardiac MRI additional assessments 37

38  
39 The cardiac MR scan will be performed on a 3T scanner (Siemens Skyra or Vida) using a 32ch  
40  
41 cardiac coil. The MRI protocol is outlined in Figure 2 and will include<sup>56</sup>:  
42

- 43  
44 i. Left ventricular (LV) function cine imaging
- 45  
46 ii. Adenosine and/or dobutamine stress and rest perfusion imaging
- 47  
48 iii. Late gadolinium enhancement
- 49  
50 iv. If time permits and the patient is able to tolerate the scan, additional sequences  
51  
52 such as aortic distensibility and angiography may be performed.  
53  
54  
55

56  
57 Patients will be fully counselled about the procedure (which may cause slight discomfort  
58  
59 and claustrophobia) and written consent gained prior to the MRI scan. A standard MRI  
60

1  
2  
3 safety questionnaire will be completed prior to the scan to ensure the safety requirements  
4  
5 are satisfied. A 12-lead ECG will be performed within 72 hours prior to the cardiac MRI scan.  
6  
7

8  
9 Two intravenous cannulae will be inserted for administration of adenosine or dobutamine  
10  
11 and gadolinium contrast agent. Patients may receive intravenous sedation if they are  
12  
13 anxious or claustrophobic. Adenosine will be administered at 140µg/kg/min, limited to 3-4  
14  
15 minutes to minimise patient discomfort. If there is no haemodynamic response and/or the  
16  
17 patient does not experience any effects, the infusion may be prolonged or the dose may be  
18  
19 increased incrementally to 210µg/kg/min (at the discretion of the supervising physician). In  
20  
21 patients with an absolute contraindication to adenosine (severe asthma/COPD, high degree  
22  
23 of atrioventricular block, theophylline usage) dobutamine/atropine will be administered as  
24  
25 the stressor agent. The dose of dobutamine will commence at 20µg/kg/min for those with  
26  
27 preserved ejection (10µg/kg/min for patients with significant LV dysfunction) and increased  
28  
29 incrementally until age-predicted target heart rate is reached ( $\geq 85\%$  of 220-age beats per  
30  
31 minute). It is anticipated the maximum dose administered will be 30µg/kg/min.<sup>57</sup> Atropine,  
32  
33 0.6-1.8mg, may be used to achieve predicted maximum heart rate. Chest pain, arrhythmias  
34  
35 and induction of wall motion abnormality are indications to stop the infusion and a patient's  
36  
37 heart rate and blood pressure will be monitored closely. Patients will be reassured  
38  
39 throughout and it will be made clear they can stop the MRI scan at any time.  
40  
41  
42  
43  
44  
45  
46  
47

48  
49 Cardiac MR analysis will be both qualitative and quantitative. Local on-site reporting will  
50  
51 include any regional motion abnormality by visual analysis using the 17-segment AHA  
52  
53 model,<sup>58</sup> and each segment will be scored as 0 (normal), 1 (mild hypokinesia), 2 (severe  
54  
55 hypokinesia), 3 (akinesia), or 4 (dyskinesia). Hypoperfusion (ischaemia) will be assessed by a  
56  
57 visual comparison of stress and rest cardiac MR perfusion scan in 16 of the 17 AHA model  
58  
59  
60

1  
2  
3 segments (excluding the apical cap segment) with scores of: 0 (normal), 1 (equivocal), 2  
4 (subendocardial ischaemia), or 3 (transmural ischaemia). Any infarct (scar) will be reported  
5  
6 based on the late gadolinium-enhancement images (17 segment AHA model) with scores of  
7  
8 0 (none), 1 (1-25%), 2 (26-50%), 3 (51-75%), or 4 (>75%) for each segment. Patients who  
9  
10 undergo open surgical revascularisation or major lower limb amputation (major surgery) will  
11  
12 undergo an additional follow-up scan at 2-4 months post-operatively to investigate for  
13  
14 incidence of peri-operative myocardial infarction.<sup>59</sup>  
15  
16  
17  
18  
19  
20

21 All patients undergoing cardiac MRI will be consented to have an additional axial image at  
22  
23 the level of the 3<sup>rd</sup> lumbar vertebrae during the initial scan only, which will be performed  
24  
25 before the cardiac sequences. This will image psoas, paraspinal and abdominal wall muscles  
26  
27 allowing the total skeletal muscle areas to be measured as assessments of sarcopenia.<sup>60</sup>  
28  
29  
30

### 31 Biomarkers additional assessments

32  
33 Venepuncture will be performed by a qualified member of the research team and blood  
34  
35 collected using an S-Monovette® 9ml K2 EDTA blood tube and an S-Monovette® 7.5ml  
36  
37 Serum Gel blood tube with the aim of collecting 6 x 500µL aliquots of both serum and  
38  
39 plasma. All samples will be stored at the NIHR Leicester Biomedical Research Centre located  
40  
41 at Glenfield Hospital for subsequent analysis. Consent will be gained to use these samples in  
42  
43 future biomarker analyses. All samples will be anonymously data-linked with clinical  
44  
45 baseline and outcome data for patients recruited to the biomarkers additional assessments.  
46  
47  
48  
49  
50

### 51 Study assessment schedule

52 An overview of study procedures and assessment schedule is detailed in Table 2.  
53  
54  
55  
56  
57  
58  
59  
60



Table 2: Study procedures and patient assessment schedule

Procedure/assessment	Baseline	24 hrs post intervention	72 hrs post intervention	3 month F/U visit	12 month F/U visit	12 month telephone F/U	24 month telephone F/U
Patient consent/consultee declaration	•						
Clinical frailty scale	•			•	•	•	•
Barthel Index	•			•	•	•	•
VascuQoL	•			•	•	•	•
HADS	•			•	•	•	•
Edmonton frail scale	•			•	•		
MoCA	•			•	•		
SPPB	•			•	•		
Grip strength	•			•	•		
SQID	•	•	•				
4AT	•	•	•				
Cardiac MRI	•			•			
Blood sample collection	•						

4AT, 4 'A's Test (4AT) for rapid delirium screening; HADS, Hospital Anxiety and Depression Scale; MoCA, Montreal Cognitive Assessment; MRI, Magnetic Resonance Imaging; SQID, Single Question in Delirium; VascuQoL, Vascular Quality of Life questionnaire.

1  
2  
3 *Additional assessments:* Frailty & cognitive; Cardiac MRI; Biomarkers.  
4  
5  
6  
7  
8  
9  
10  
11  
12  
13  
14  
15  
16  
17  
18  
19  
20  
21  
22  
23  
24  
25  
26  
27  
28  
29  
30  
31  
32  
33  
34  
35  
36  
37  
38  
39  
40  
41  
42  
43  
44  
45  
46

For peer review only

### Definition of end of study

The end of study date is defined by the date the long-term outcomes are collected from NHS digital, which will be ongoing for 10 years following the date the final patient is recruited to the primary cohort.

### Discontinuation/withdrawal from the study

A patient, or personal consultee, may withdraw from the study at any point without giving any reason with no effect to their medical care or legal rights. This will be explained at recruitment and each follow-up contact. If the patient (or personal consultee) withdrawing from the study voluntarily offers a reason for their withdrawal this will be documented in the medical notes and collected as part of the research data. Patient data collected up to the point of withdrawal will be used in the analysis unless the patient (or personal consultee) has withdrawn consent for all data to be used. Similarly if they withdraw consent for blood samples to be used prior to analysis these will be destroyed. Long-term data will be collected via data-linkage unless consent is withdrawn.

### Study patient and public involvement (PPI) group

A PPI group involving patients, and their carers, with experience of being treated for SLI at the Leicester Vascular Institute has been established for this study. Members of the PPI group have been directly involved in the development of the study, the information material and provided insight on the burden of the study from a patient's perspective. The group will continue to meet throughout the duration of the study to be informed of the progress and have the opportunity to advise regarding the ongoing delivery of the study.

### Planned study dates

1  
2  
3 The study began on 10<sup>th</sup> May 2019 and recruitment will continue until the 9<sup>th</sup> May 2021. The  
4  
5 study will end on 9<sup>th</sup> May 2031 after completion of 10-year follow-up via NHS digital.  
6  
7

## 8 **Data & analysis**

9  
10 Study data will be collected and managed using REDCap (Research Electronic Data Capture)  
11  
12 hosted at the University of Leicester.<sup>61</sup> REDCap is a secure, web-based application designed  
13  
14 to support data capture for research studies.  
15  
16  
17

18  
19 A full statistical analysis plan will be written and agreed by all investigators before database  
20  
21 lock. A range of continuous and categorical data will be collected at baseline and at various  
22  
23 time points on the patients recruited into the primary cohort and the additional  
24  
25 assessments. Descriptive statistics of the baseline data will be presented using appropriate  
26  
27 tabular and graphical methods both for the prospective cohort and the historical controls.  
28  
29 Comparability of the cohorts in terms of baseline characteristics will be assessed using  
30  
31 appropriate statistical tests, for example t-tests for continuous variables and chi square tests  
32  
33 for categorical.  
34  
35  
36  
37

38  
39 The proportion of patients undergoing a major amputation within the first 12 months will be  
40  
41 calculated and presented with 95% confidence intervals (95% CI). The prospective cohort  
42  
43 will be compared to the historical controls using logistic regression with major amputation  
44  
45 within 12 months as the dependent variable. Given there maybe systematic differences  
46  
47 between the prospective and historical cohorts adjustment for propensity score will be  
48  
49 used. The propensity score model will include all baseline characteristics available in both  
50  
51 cohorts as independent variables with cohort (prospective/historical) as the dependent  
52  
53 variable. The final form of the propensity score model will specified in the statistical  
54  
55 analysis plan prior to analysis commencing. The model will be run both unadjusted and  
56  
57  
58  
59  
60

1  
2  
3 adjusted for the propensity score. An adjustment for propensity score, rather than  
4  
5 propensity score matching, will be used to ensure that all participants are included in the  
6  
7 analysis.<sup>62 63</sup>  
8  
9

10  
11 A similar modelling strategy will be employed to assess the association between  
12  
13 interventions (amputation versus no amputation) and short-, medium- and long-term  
14  
15 outcomes. Cox proportional hazards modelling will be used to assess association with both  
16  
17 mortality and amputation free survival. The prevalence (95% CI) will also be calculated for  
18  
19 frailty, cognitive impairment, and cardiac disease (detected by stress MRI).  
20  
21  
22

23  
24 The assumptions of all models fitted will be assessed. The levels and reasons for missing  
25  
26 data for all key outcomes and confounders will be assessed. Where more than 5% of data  
27  
28 are missing, multiple imputation will be used. Where less than 5% are missing a complete  
29  
30 case analysis will be performed.  
31  
32

33  
34 Statistical analyses will be two-sided with a 5% significance level.  
35  
36

### 37 Sample size calculation

38  
39 The historical amputation rate among patients with SLI is around 25%.<sup>4</sup> We anticipate a  
40  
41 reduction in amputation rate among this contemporary cohort in the region of 10%. A  
42  
43 sample size of 335 patients will be required to detect a 10% reduction in amputation rate in  
44  
45 comparison to a similar sized historical cohort, with 90% power and type-I error rate of 5%.  
46  
47  
48

49 The target sample size will be 420 patients to account for a potential loss to follow-up of  
50  
51 20%. A minimum of 335 patients in the contemporary cohort will enable an estimate of  
52  
53 amputation rate of 15% with a 95% confidence interval of 11.3-19.2%, which is clinically  
54  
55 acceptable.  
56  
57  
58  
59  
60

## **Ethics & dissemination**

This study has received ethical approval from the UK National Research Ethics Service (19/LO/0132). The study sponsor is the University of Leicester and all their standard operating procedures will be followed ensuring this study complies with all relevant legislation and guidelines. Direct access will be granted to authorised representatives from the sponsor, host institution and regulatory authorities to permit study related monitoring, audit and inspection. The Chief Investigator (RS) will ensure that this study is conducted in full conformity with the Declaration of Helsinki (last amended October 2013).

As this is not considered a high-risk study, adverse events or adverse reactions will not be reported. There are many serious adverse events (SAEs) that are reasonably expected in this group of patients. Expected SAEs (Supplementary File 1) that are unrelated to the study will not be reported. All unexpected SAEs and serious adverse reactions (SARs) related to the study will be documented on the SAE form and reported to the sponsor within 24 hours of the investigator becoming aware of the event.

A summary of findings will be available to patients on request. It is the intention to disseminate any findings from the study at relevant national and international meetings and in peer-reviewed medical journals. Results will also be distributed through social media and in plain language using our University accounts to increase access to the general public. All clinicians and researchers involved will be acknowledged in written papers. For each output a writing team will be convened from the study group and external collaborators (where necessary). Authorship will be decided on a paper-by-paper basis. Anonymised study data will be available on request to the Chief Investigator (RS).

## **Discussion**

The results of this study should provide a valuable update to current observational evidence regarding contemporary outcomes of patients with SLI. The additional assessments will also provide useful observational evidence, which may help risk-stratify patients both in terms of risk of amputation and mortality based on frailty, cognitive impairment and cardiac MRI findings. Future biomarker analyses of samples collected during the study may also provide evidence for established and novel biomarkers in the risk-stratification of patients with SLI. The facility to include patients without capacity to consent will reduce selection bias and should provide far more representative data particularly regarding older patients with SLI, and the prevalence of frailty and cognitive impairment in this cohort.

## **Limitations**

There are a number of limitations to this study. As this is a single-centre study the generalisability of the results will be limited, particularly as amputation rate will be impacted on by local management strategies and patient demographics. Additionally, there is not the resource to provide for recruitment of non-English speaking patients. Whilst we do not anticipate significant numbers of patients will be excluded for this reason, as Leicester has an ethnically diverse population, results from this study may not be reflective of the whole population.

Prospective data has not been collected for patients with SLI presenting prior to the establishment of the rapid-access limb salvage clinic and improved SLI and DFD management pathways: subsequently data will be retrospectively collected for a historical cohort to compare amputation rates. Any observed differences in amputation rates may therefore be due to factors other than modern revascularisation techniques and improved

1  
2  
3 care pathways. Statistical analyses with adjustment for propensity score may mitigate this  
4  
5 to a degree, however any observed effect may still be liable to unidentified confounding.  
6  
7  
8 Furthermore, retrospective data collected will not be as reliable as the data from the  
9  
10 prospective cohort limiting the comparison between the two cohorts, however it is difficult  
11  
12 to determine whether this may under- or over-estimate the amputation rate in the  
13  
14 historical cohort prior to completing historical data collection. Frailty, cognitive function,  
15  
16 cardiac MRI and biomarker analysis will not be available for patients in the historical cohort  
17  
18 so no comparisons will be possible.  
19  
20  
21  
22

### 23 **Conclusion**

24  
25 The LIMb study will report the current amputation rate in patients presenting with severe  
26  
27 limb ischaemia. It aims to quantify the impact of a rapid-access vascular limb salvage clinic  
28  
29 and improved management pathways on amputation rate, and the potential role for cardiac  
30  
31 MR, frailty and cognitive assessments, and biomarker analysis in risk stratifying patients  
32  
33 undergoing intervention for SLI.  
34  
35  
36  
37  
38  
39  
40  
41  
42  
43  
44  
45  
46  
47  
48  
49  
50  
51  
52  
53  
54  
55  
56  
57  
58  
59  
60



## References

1. Fowkes FGR, Rudan D, Rudan I, et al. Comparison of global estimates of prevalence and risk factors for peripheral artery disease in 2000 and 2010: a systematic review and analysis. *The Lancet* 2013;382(9901):1329-40. doi: 10.1016/S0140-6736(13)61249-0
2. Criqui M, Aboyans V. Epidemiology of peripheral artery disease. *Circulation research* 2015;116(9):1509.
3. Becker F, Robert-Ebadi H, Ricco JB, et al. Chapter I: Definitions, epidemiology, clinical presentation and prognosis. *Eur J Vasc Endovasc Surg* 2011;42 Suppl 2:S4-12. doi: 10.1016/S1078-5884(11)60009-9
4. Norgren L, Hiatt WR, Dormandy JA, et al. Inter-Society Consensus for the Management of Peripheral Arterial Disease (TASC II). *J Vasc Surg* 2007;45 Suppl S:S5-67. doi: 10.1016/j.jvs.2006.12.037 [published Online First: 2007/01/16]
5. Ahmad N, Thomas GN, Gill P, et al. The prevalence of major lower limb amputation in the diabetic and non-diabetic population of England 2003–2013. *Diabetes and Vascular Disease Research* 2016;13(5):348-53. doi: 10.1177/1479164116651390
6. Kerr M. Diabetic foot care in England: an economic study: Diabetes UK; 2017 [Available from: <https://diabetes-resources-production.s3-eu-west-1.amazonaws.com/diabetes-storage/migration/pdf/Diabetic%2520footcare%2520in%2520England%2C%2520An%2520economic%2520case%2520study%2520%28January%25202017%29.pdf>].
7. Jeffcoate W, Bakker K. World Diabetes Day: footing the bill. *The Lancet* 2005;365(9470):1527. doi: 10.1016/S0140-6736(05)66437-9
8. Davie-Smith F, Coulter E, Kennon B, et al. Factors influencing quality of life following lower limb amputation for peripheral arterial occlusive disease: A systematic review

- 1  
2  
3 of the literature. *Prosthetics and Orthotics International* 2017;41(6):537-47. doi:  
4  
5 10.1177/0309364617690394  
6  
7
- 8 9. Suckow BD, Goodney PP, Cambria RA, et al. Predicting functional status following  
9  
10 amputation after lower extremity bypass. *Annals of vascular surgery* 2012;26(1):67-  
11  
12 78.  
13  
14
- 15 10. Naylor H, Russell P, Thompson J. Development of a scoring tool (BLARt score) to predict  
16  
17 functional outcome in lower limb amputees AU - Bowrey, Sarah. *Disability and*  
18  
19 *Rehabilitation* 2018:1-9. doi: 10.1080/09638288.2018.1466201  
20  
21  
22
- 23 11. Takeji Y, Yamaji K, Tomoi Y, et al. Impact of Frailty on Clinical Outcomes in Patients With  
24  
25 Critical Limb Ischemia. *Circulation Cardiovascular interventions* 2018;11(7):e006778.  
26  
27 doi: 10.1161/CIRCINTERVENTIONS.118.006778  
28  
29
- 30 12. Hubbard RE, Story DA. Patient frailty: the elephant in the operating room. *Anaesthesia*  
31  
32 2014;69 Suppl 1:26-34. doi: 10.1111/anae.12490 [published Online First:  
33  
34 2013/12/16]  
35  
36
- 37 13. Morley JE, Vellas B, van Kan GA, et al. Frailty Consensus: A Call to Action. *Journal of the*  
38  
39 *American Medical Directors Association* 2013;14(6):392-97. doi:  
40  
41 10.1016/j.jamda.2013.03.022  
42  
43  
44
- 45 14. Gale CR, Cooper C, Aihie Sayer A. Prevalence of frailty and disability: findings from the  
46  
47 English Longitudinal Study of Ageing. *Age and Ageing* 2015;44(1):162-65. doi:  
48  
49 10.1093/ageing/afu148  
50  
51
- 52 15. Partridge JSL, Fuller M, Harari D, et al. Frailty and poor functional status are common in  
53  
54 arterial vascular surgical patients and affect postoperative outcomes. *International*  
55  
56 *Journal of Surgery* 2015;18:57-63. doi: 10.1016/j.ijsu.2015.04.037  
57  
58  
59  
60

- 1  
2  
3 16. Xue Q-L. The Frailty Syndrome: Definition and Natural History. *Clinics in geriatric*  
4  
5 *medicine* 2011;27(1):1-15. doi: 10.1016/j.cger.2010.08.009  
6  
7
- 8 17. Wang J, Zou Y, Zhao J, et al. The Impact of Frailty on Outcomes of Elderly Patients After  
9  
10 Major Vascular Surgery: A Systematic Review and Meta-analysis. *European Journal of*  
11  
12 *Vascular and Endovascular Surgery* 2018 doi:  
13  
14 <http://dx.doi.org/10.1016/j.ejvs.2018.07.012>  
15  
16
- 17 18. de Vries NM, Staal JB, van Ravensberg CD, et al. Outcome instruments to measure  
18  
19 frailty: A systematic review. *Ageing Research Reviews* 2011;10(1):104-14. doi:  
20  
21 <https://doi.org/10.1016/j.arr.2010.09.001>  
22  
23
- 24 19. Robertson DA, Savva GM, Kenny RA. Frailty and cognitive impairment—A review of the  
25  
26 evidence and causal mechanisms. *Ageing Research Reviews* 2013;12(4):840-51. doi:  
27  
28 <https://doi.org/10.1016/j.arr.2013.06.004>  
29  
30
- 31 20. Partridge JSL, Dhesi JK, Cross JD, et al. The prevalence and impact of undiagnosed  
32  
33 cognitive impairment in older vascular surgical patients. *Journal of Vascular Surgery*  
34  
35 2014;60(4):1002. doi: <http://dx.doi.org/10.1016/j.jvs.2014.04.041>  
36  
37  
38
- 39 21. Fried LP, Tangen CM, Walston J, et al. Frailty in older adults: evidence for a phenotype. *J*  
40  
41 *Gerontol A Biol Sci Med Sci* 2001;56(3):M146-56. [published Online First:  
42  
43 2001/03/17]  
44  
45
- 46 22. Cruz-Jentoft AJ, Bahat G, Bauer J, et al. Sarcopenia: revised European consensus on  
47  
48 definition and diagnosis. *Age and Ageing* 2019;48(1):16-31. doi:  
49  
50 10.1093/ageing/afy169  
51  
52  
53
- 54 23. Reeve TE, Ur R, Craven TE, et al. Grip strength measurement for frailty assessment in  
55  
56 patients with vascular disease and associations with comorbidity, cardiac risk, and  
57  
58  
59  
60

- 1  
2  
3 sarcopenia. *Journal of vascular surgery* 2018;67(5):1512-20. doi:  
4  
5 10.1016/j.jvs.2017.08.078  
6  
7
- 8 24. Matsubara Y, Matsumoto T, Inoue K, et al. Sarcopenia is a risk factor for cardiovascular  
9  
10 events experienced by patients with critical limb ischemia. *Journal of Vascular*  
11  
12 *Surgery* 2017;65(5):1390-97. doi: <http://dx.doi.org/10.1016/j.jvs.2016.09.030>  
13  
14
- 15 25. Pol RA, Van Leeuwen BL, Visser L, et al. Standardised frailty indicator as predictor for  
16  
17 postoperative delirium after vascular surgery: A prospective cohort study. *European*  
18  
19 *Journal of Vascular and Endovascular Surgery* 2011;42(6):824-30. doi:  
20  
21 <http://dx.doi.org/10.1016/j.ejvs.2011.07.006>  
22  
23
- 24 26. Visser L, Prent A, van der Laan MJ, et al. Predicting postoperative delirium after vascular  
25  
26 surgical procedures. *Journal of Vascular Surgery* 2015;62(1):183-89. doi:  
27  
28 <https://doi.org/10.1016/j.jvs.2015.01.041>  
29  
30
- 31 27. Hertzner NR. Clinical experience with preoperative coronary angiography. *Journal of*  
32  
33 *Vascular Surgery* 1985;2(3):510-12. doi: 10.1016/0741-5214(85)90115-6  
34  
35
- 36 28. Her K, Choi C, Park Y, et al. Concomitant peripheral artery disease and asymptomatic  
37  
38 coronary artery disease: a management strategy. *Annals of vascular surgery*  
39  
40 2008;22(5):649-56.  
41  
42
- 43 29. Pande RL, Perlstein TS, Beckman JA, et al. Secondary prevention and mortality in  
44  
45 peripheral artery disease: National Health and Nutrition Examination Study, 1999 to  
46  
47 2004. *Circulation* 2011;124(1):17-23. doi: 10.1161/circulationaha.110.003954  
48  
49 [published Online First: 2011/06/22]  
50  
51
- 52 30. Landesberg G, Mosseri M, Wolf YG, et al. Preoperative thallium scanning, selective  
53  
54 coronary revascularization, and long-term survival after major vascular surgery.  
55  
56  
57  
58  
59  
60

- 1  
2  
3 *Circulation* 2003;108(2):177-83. doi: 10.1161/01.cir.0000080292.11186.fb [published  
4  
5 Online First: 2003/07/02]  
6  
7
- 8 31. Wagner A, Mahrholdt H, Holly TA, et al. Contrast-enhanced MRI and routine single  
9  
10 photon emission computed tomography (SPECT) perfusion imaging for detection of  
11  
12 subendocardial myocardial infarcts: an imaging study. *The Lancet*  
13  
14 2003;361(9355):374-79. doi: 10.1016/s0140-6736(03)12389-6  
15  
16
- 17 32. Khoo JP, Grundy BJ, Steadman CD, et al. Stress cardiovascular MR in routine clinical  
18  
19 practice: referral patterns, accuracy, tolerance, safety and incidental findings. *The*  
20  
21 *British journal of radiology* 2012;85(1018):e851-7. doi: 10.1259/bjr/14829242  
22  
23 [published Online First: 2012/03/30]  
24  
25
- 26 33. Greenwood JP, Ripley DP, Berry C, et al. Effect of Care Guided by Cardiovascular  
27  
28 Magnetic Resonance, Myocardial Perfusion Scintigraphy, or NICE Guidelines on  
29  
30 Subsequent Unnecessary Angiography Rates: The CE-MARC 2 Randomized Clinical  
31  
32 Trial. *JAMA : the journal of the American Medical Association* 2016;316(10):1051-60.  
33  
34 doi: 10.1001/jama.2016.12680 [published Online First: 2016/08/30]  
35  
36  
37
- 38 34. Greenwood JP, Maredia N, Younger JF, et al. Cardiovascular magnetic resonance and  
39  
40 single-photon emission computed tomography for diagnosis of coronary heart  
41  
42 disease (CE-MARC): a prospective trial. *Lancet* 2012;379(9814):453-60. doi:  
43  
44 10.1016/S0140-6736(11)61335-4 [published Online First: 2011/12/27]  
45  
46  
47
- 48 35. Xue H, Inati S, Sorensen TS, et al. Distributed MRI reconstruction using Gadgetron-based  
49  
50 cloud computing. *Magnetic resonance in medicine : official journal of the Society of*  
51  
52 *Magnetic Resonance in Medicine / Society of Magnetic Resonance in Medicine*  
53  
54 2015;73(3):1015-25. doi: 10.1002/mrm.25213 [published Online First: 2014/04/02]  
55  
56  
57  
58  
59  
60

- 1  
2  
3 36. Kellman P, Hansen MS, Nielles-Vallespin S, et al. Myocardial perfusion cardiovascular  
4  
5 magnetic resonance: optimized dual sequence and reconstruction for quantification.  
6  
7  
8 *Journal of cardiovascular magnetic resonance : official journal of the Society for*  
9  
10 *Cardiovascular Magnetic Resonance* 2017;19(1):43. doi: 10.1186/s12968-017-0355-5  
11  
12 [published Online First: 2017/04/08]  
13  
14  
15 37. Engblom H, Xue H, Akil S, et al. Fully quantitative cardiovascular magnetic resonance  
16  
17 myocardial perfusion ready for clinical use: a comparison between cardiovascular  
18  
19 magnetic resonance imaging and positron emission tomography. *Journal of*  
20  
21 *cardiovascular magnetic resonance : official journal of the Society for Cardiovascular*  
22  
23 *Magnetic Resonance* 2017;19(1):78. doi: 10.1186/s12968-017-0388-9 [published  
24  
25 Online First: 2017/10/20]  
26  
27  
28  
29 38. Mills JL, Sr., Conte MS, Armstrong DG, et al. The Society for Vascular Surgery Lower  
30  
31 Extremity Threatened Limb Classification System: risk stratification based on wound,  
32  
33 ischemia, and foot infection (WIFI). *J Vasc Surg* 2014;59(1):220-34 e1-2. doi:  
34  
35 10.1016/j.jvs.2013.08.003 [published Online First: 2013/10/16]  
36  
37  
38  
39 39. Aboyans V, Ricco JB, Bartelink MEL, et al. 2017 ESC Guidelines on the Diagnosis and  
40  
41 Treatment of Peripheral Arterial Diseases, in collaboration with the European Society  
42  
43 for Vascular Surgery (ESVS): Document covering atherosclerotic disease of  
44  
45 extracranial carotid and vertebral, mesenteric, renal, upper and lower extremity  
46  
47 arteriesEndorsed by: the European Stroke Organization (ESO)The Task Force for the  
48  
49 Diagnosis and Treatment of Peripheral Arterial Diseases of the European Society of  
50  
51 Cardiology (ESC) and of the European Society for Vascular Surgery (ESVS). *Eur Heart J*  
52  
53 2018;39(9):763-816. doi: 10.1093/eurheartj/ehx095 [published Online First:  
54  
55 2017/09/10]  
56  
57  
58  
59  
60

- 1  
2  
3 40. Breen P, Simpson S, Packer C. New and emerging angioplasty technologies in  
4  
5 development for severe lower limb ischaemia. Birmingham, UK: The NIHR Horizon  
6  
7 Scanning Research & Intelligence Centre University of Birmingham, 2016.  
8  
9
- 10 41. Slim H, Tiwari A, Ahmed A, et al. Distal versus Ultradistal Bypass Grafts: Amputation-free  
11  
12 Survival and Patency Rates in Patients with Critical Leg Ischaemia. *European Journal*  
13  
14 *of Vascular and Endovascular Surgery* 2011;42(1):83-88. doi:  
15  
16 <https://doi.org/10.1016/j.ejvs.2011.03.016>  
17  
18
- 19 42. Taeymans K, Groot Jebbink E, Holewijn S, et al. Three-year outcome of the covered  
20  
21 endovascular reconstruction of the aortic bifurcation technique for aortoiliac  
22  
23 occlusive disease. *Journal of Vascular Surgery* 2018;67(5):1438-47. doi:  
24  
25 <https://doi.org/10.1016/j.jvs.2017.09.015>  
26  
27
- 28 43. Boyle J, Brooks M, Biram R, et al. A Best Practic Clinical Care Pathway for Peripheral  
29  
30 Arterial Disease London, UK: The Vascular Society of Great Britain & Ireland; 2019  
31  
32 [Available from:  
33  
34 [https://www.vascularsociety.org.uk/\\_userfiles/pages/files/Newsletters/PAD%20QIF](https://www.vascularsociety.org.uk/_userfiles/pages/files/Newsletters/PAD%20QIF%20April%202019(1).pdf)  
35  
36 [%20April%202019\(1\).pdf](https://www.vascularsociety.org.uk/_userfiles/pages/files/Newsletters/PAD%20QIF%20April%202019(1).pdf) accessed 12th April 2019.  
37  
38  
39
- 40 44. Edmans J, Bradshaw L, Gladman JRF, et al. The Identification of Seniors at Risk (ISAR)  
41  
42 score to predict clinical outcomes and health service costs in older people discharged  
43  
44 from UK acute medical units. *Age and ageing* 2013;42(6):747-53. doi:  
45  
46 10.1093/ageing/aft054 [published Online First: 05/10]  
47  
48  
49
- 50 45. Adam DJ, Beard JD, Cleveland T, et al. Bypass versus angioplasty in severe ischaemia of  
51  
52 the leg (BASIL): multicentre, randomised controlled trial. *Lancet*  
53  
54 2005;366(9501):1925-34. doi: 10.1016/s0140-6736(05)67704-5 [published Online  
55  
56 First: 2005/12/06]  
57  
58  
59  
60

- 1  
2  
3 46. Ince P, Abbas ZG, Lutale JK, et al. Use of the SINBAD classification system and score in  
4  
5 comparing outcome of foot ulcer management on three continents. *Diabetes Care*  
6  
7 2008;31(5):964-7. doi: 10.2337/dc07-2367 [published Online First: 2008/02/27]  
8  
9  
10 47. Rockwood K, Song X, MacKnight C, et al. A global clinical measure of fitness and frailty in  
11  
12 elderly people. *CMAJ* 2005;173(5):489-95. doi: 10.1503/cmaj.050051 [published  
13  
14 Online First: 2005/09/01]  
15  
16  
17 48. Morgan MB, Crayford T, Murrin B, et al. Developing the Vascular Quality of Life  
18  
19 Questionnaire: a new disease-specific quality of life measure for use in lower limb  
20  
21 ischemia. *J Vasc Surg* 2001;33(4):679-87. doi: 10.1067/mva.2001.112326 [published  
22  
23 Online First: 2001/04/11]  
24  
25  
26 49. Collin C, Wade DT, Davies S, et al. The Barthel ADL Index: A reliability study. *International*  
27  
28 *Disability Studies* 1988;10(2):61-63. doi: 10.3109/09638288809164103  
29  
30  
31 50. Zigmond AS, Snaith RP. The hospital anxiety and depression scale. *Acta psychiatrica*  
32  
33 *scandinavica* 1983;67(6):361-70.  
34  
35  
36 51. Rolfson DB, Majumdar SR, Tsuyuki RT, et al. Validity and reliability of the Edmonton Frail  
37  
38 Scale. *Age and Ageing* 2006;35(5):526-29. doi: 10.1093/ageing/afl041  
39  
40  
41 52. Nasreddine ZS, Phillips NA, Bédirian V, et al. The Montreal Cognitive Assessment, MoCA:  
42  
43 a brief screening tool for mild cognitive impairment. *Journal of the American*  
44  
45 *Geriatrics Society* 2005;53(4):695-99.  
46  
47  
48 53. Guralnik JM, Simonsick EM, Ferrucci L, et al. A short physical performance battery  
49  
50 assessing lower extremity function: association with self-reported disability and  
51  
52 prediction of mortality and nursing home admission. *Journal of gerontology*  
53  
54 1994;49(2):M85-M94.  
55  
56  
57  
58  
59  
60



- 1  
2  
3 54. Sands MB, Dantoc BP, Hartshorn A, et al. Single question in delirium (SQiD): testing its  
4  
5 efficacy against psychiatrist interview, the confusion assessment method and the  
6  
7 memorial delirium assessment scale. *Palliative Medicine* 2010;24(6):561-65.  
8  
9
- 10 55. Bellelli G, Morandi A, Davis DH, et al. Validation of the 4AT, a new instrument for rapid  
11  
12 delirium screening: a study in 234 hospitalised older people. *Age Ageing*  
13  
14 2014;43(4):496-502. doi: 10.1093/ageing/afu021 [published Online First:  
15  
16 2014/03/05]  
17  
18  
19
- 20 56. Singh A, Greenwood JP, Berry C, et al. Comparison of exercise testing and CMR  
21  
22 measured myocardial perfusion reserve for predicting outcome in asymptomatic  
23  
24 aortic stenosis: the PRognostic Importance of MIcrovascular Dysfunction in Aortic  
25  
26 Stenosis (PRIMID AS) Study. *European heart journal* 2017;38(16):1222-29. doi:  
27  
28 10.1093/eurheartj/ehx001 [published Online First: 2017/02/17]  
29  
30  
31
- 32 57. Mordi I, Stanton T, Carrick D, et al. Comprehensive dobutamine stress CMR versus  
33  
34 echocardiography in LBBB and suspected coronary artery disease. *JACC Cardiovasc*  
35  
36 *Imaging* 2014;7(5):490-8. doi: 10.1016/j.jcmg.2014.01.012 [published Online First:  
37  
38 2014/04/15]  
39  
40  
41
- 42 58. Cerqueira MD, Weissman NJ, Dilsizian V, et al. Standardized myocardial segmentation  
43  
44 and nomenclature for tomographic imaging of the heart. A statement for healthcare  
45  
46 professionals from the Cardiac Imaging Committee of the Council on Clinical  
47  
48 Cardiology of the American Heart Association. *Circulation* 2002;105(4):539-42.  
49  
50  
51 [published Online First: 2002/01/30]  
52  
53
- 54 59. Rahimi K, Banning AP, Cheng AS, et al. Prognostic value of coronary revascularisation-  
55  
56 related myocardial injury: a cardiac magnetic resonance imaging study. *Heart*  
57  
58  
59  
60

2009;95(23):1937-43. doi: 10.1136/hrt.2009.173302 [published Online First:  
2009/08/19]

60. Kays JK, Liang TW, Zimmers TA, et al. Sarcopenia is a significant predictor of mortality after abdominal aortic aneurysm repair. *JCSM Clinical Reports* 2018;3(1)

61. Harris PA, Taylor R, Thielke R, et al. Research electronic data capture (REDCap)--a metadata-driven methodology and workflow process for providing translational research informatics support. *J Biomed Inform* 2009;42(2):377-81. doi: 10.1016/j.jbi.2008.08.010 [published Online First: 2008/10/22]

62. Austin PC. An Introduction to Propensity Score Methods for Reducing the Effects of Confounding in Observational Studies. *Multivariate Behav Res* 2011;46(3):399-424. doi: 10.1080/00273171.2011.568786 [published Online First: 2011/06/08]

63. Lim J, Walley R, Yuan J, et al. Minimizing Patient Burden Through the Use of Historical Subject-Level Data in Innovative Confirmatory Clinical Trials: Review of Methods and Opportunities. *Therapeutic Innovation & Regulatory Science* 2018;52(5):546-59. doi: 10.1177/2168479018778282

## **Figure Legends**

Figure 1: Study overview. Numbers are estimates for the whole two-year recruitment period and based on local audit data from 2018/19.

MRI, Magnetic resonance imaging.

Figure 2: Cardiac MRI protocol including Dixon function for abdominal visceral and subcutaneous fat.

L3, 3rd Lumbar vertebra; 4/3/2 Ch, 4/3/2 chamber; SAO, sagittal oblique.

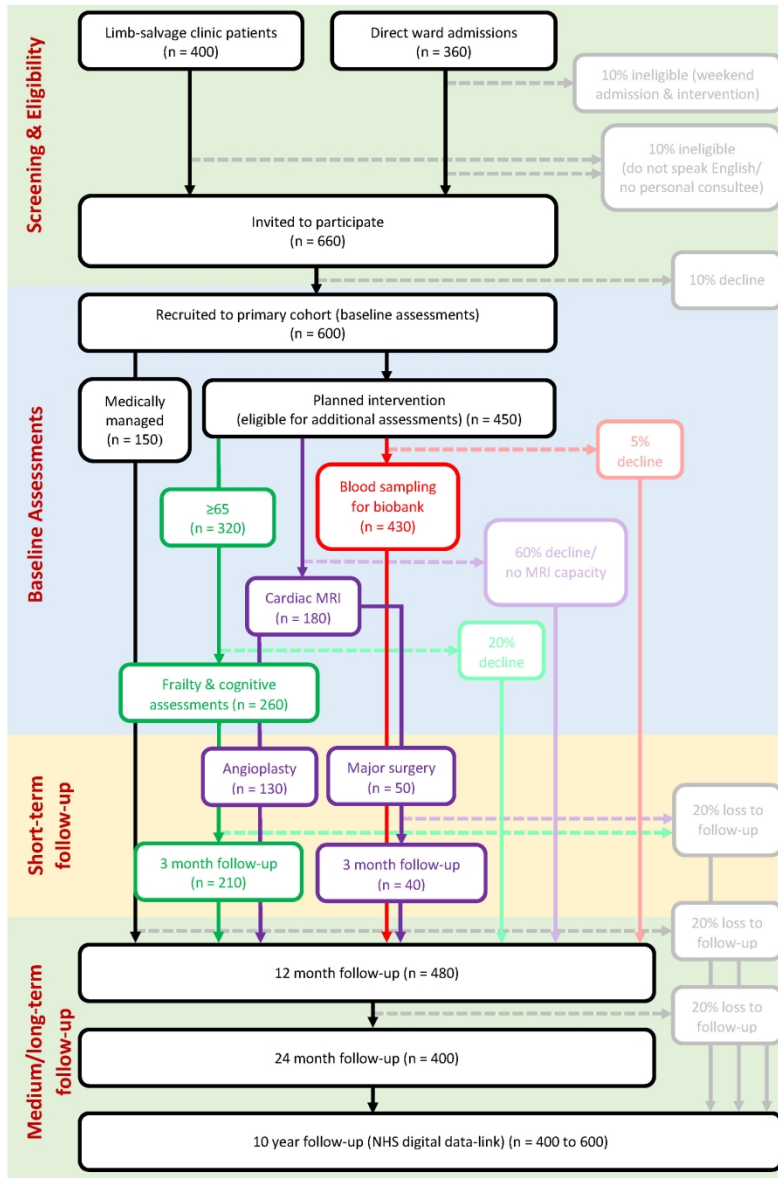


Figure 1: Study overview. Numbers are estimates for the whole two-year recruitment period and based on local audit data from 2018/19. MRI, Magnetic resonance imaging.

182x271mm (300 x 300 DPI)

1  
2  
3  
4  
5  
6  
7  
8  
9  
10  
11  
12  
13  
14  
15  
16  
17  
18  
19  
20  
21  
22  
23  
24  
25  
26  
27  
28  
29  
30  
31  
32  
33  
34  
35  
36  
37  
38  
39  
40  
41  
42  
43  
44  
45  
46  
47  
48  
49  
50  
51  
52  
53  
54  
55  
56  
57  
58  
59  
60

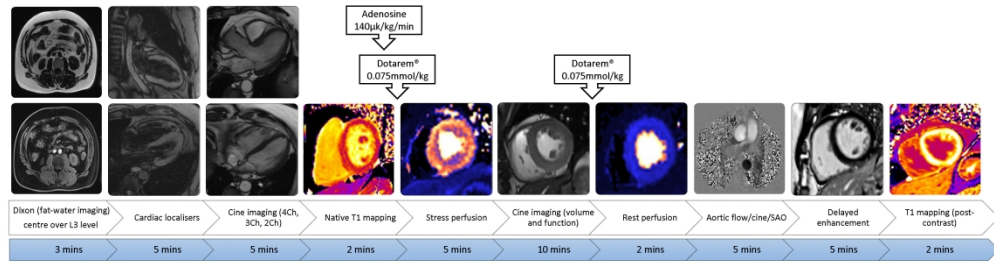


Figure 2: Cardiac MRI protocol including Dixon function for abdominal visceral and subcutaneous fat. L3, 3rd Lumbar vertebra; 4/3/2 Ch, 4/3/2 chamber; SAO, sagittal oblique.

338x91mm (300 x 300 DPI)

## **Expected adverse events and serious adverse events**

### **Cardiac**

Angina  
Ankle swelling and  
peripheral oedema  
Arrhythmias  
Cardiac arrest  
Cardiac failure  
Myocardial infarction  
Palpitations  
Poor exercise tolerance  
Shortness of breath  
Tiredness and exhaustion

### **Respiratory**

Chest infection  
Cough  
Exacerbation of COPD  
Pneumonia  
Pulmonary embolus  
Respiratory failure

### **Leg problems**

Bruising  
Cellulitis  
Debridement of leg/foot  
wound  
DVT  
Foot amputation  
Haematoma  
Lymph leak  
Minor amputation of toes  
Osteomyelitis of  
leg/foot/toes  
Pain  
Phlebitis  
Wound breakdown  
Wound infection

### **Diabetes**

Drug reactions  
Hyperglycaemia  
Hypoglycaemia  
Infections  
Injections site problems  
Neuropathy

### **General**

Abdominal pain  
Anxiety  
Arm / hand pain  
Backache  
Breast lumps  
Breast pain  
Cellulitis  
Constipation  
Delirium  
Depression  
Diarrhoea  
Earache  
Falls  
Fractures  
Gastrointestinal bleeding  
Gastro-oesophageal  
reflux disease  
Gynaecological bleeding  
Head injury  
Headache  
Indigestion  
Influenza  
Intra-abdominal  
infections and sepsis  
Jaundice  
Joint inflammation  
Joint pain  
Leg/foot pain  
Liver disease  
Malaise  
Malignancy  
Neck and spine pain  
Neck pain  
Necrotising fasciitis  
Nose bleeds  
Osteoarthritis  
Other forms of arthritis  
Parkinson disease  
Pelvic pain  
Peptic ulcer disease  
Piles and perianal disease  
Prostatism  
Psychiatric illness

Rectal bleeding  
Renal impairment  
Sciatica  
Skin lesions  
Skin rashes  
Soft tissue inflammation  
Stress  
Stroke  
Transient ischaemic  
attack  
Toothache  
Urinary retention  
Urinary tract infection  
Vomiting