

Figure S67. X-gal staining (15.5 h) of *Ambn*^{lacZ/lacZ} molar junctional epithelium at D28. **A:** Decalcified section of maxillary first (M1), second (M2) and third (M3) molars. **B-E:** Higher magnification views of boxed areas in panel A. Only spotty X-gal staining was observed in the junctional epithelium.

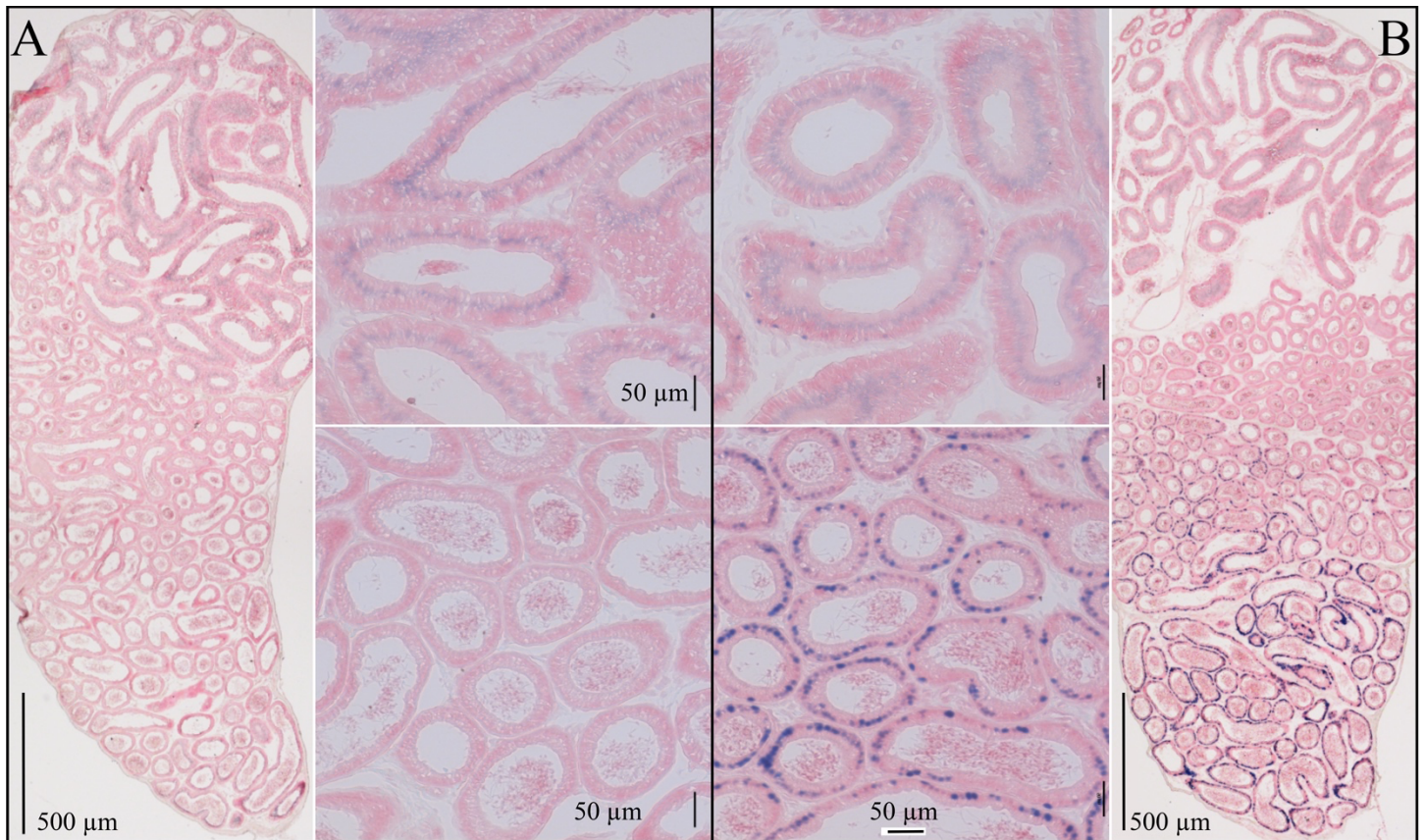


Figure S68. X-gal staining (1 h) of epididymis. **A:** Wild-type negative control. **B:** *Ambn^{lacZ/lacZ}*. The head of the epididymis (top) showed mild background, non-nuclear, X-gal staining that was present in both WT and *Ambn^{lacZ/lacZ}* mice, and was not localized to the nucleus. The tail of the epididymis was positive for nuclear X-gal staining whereas the wild-type was negative.

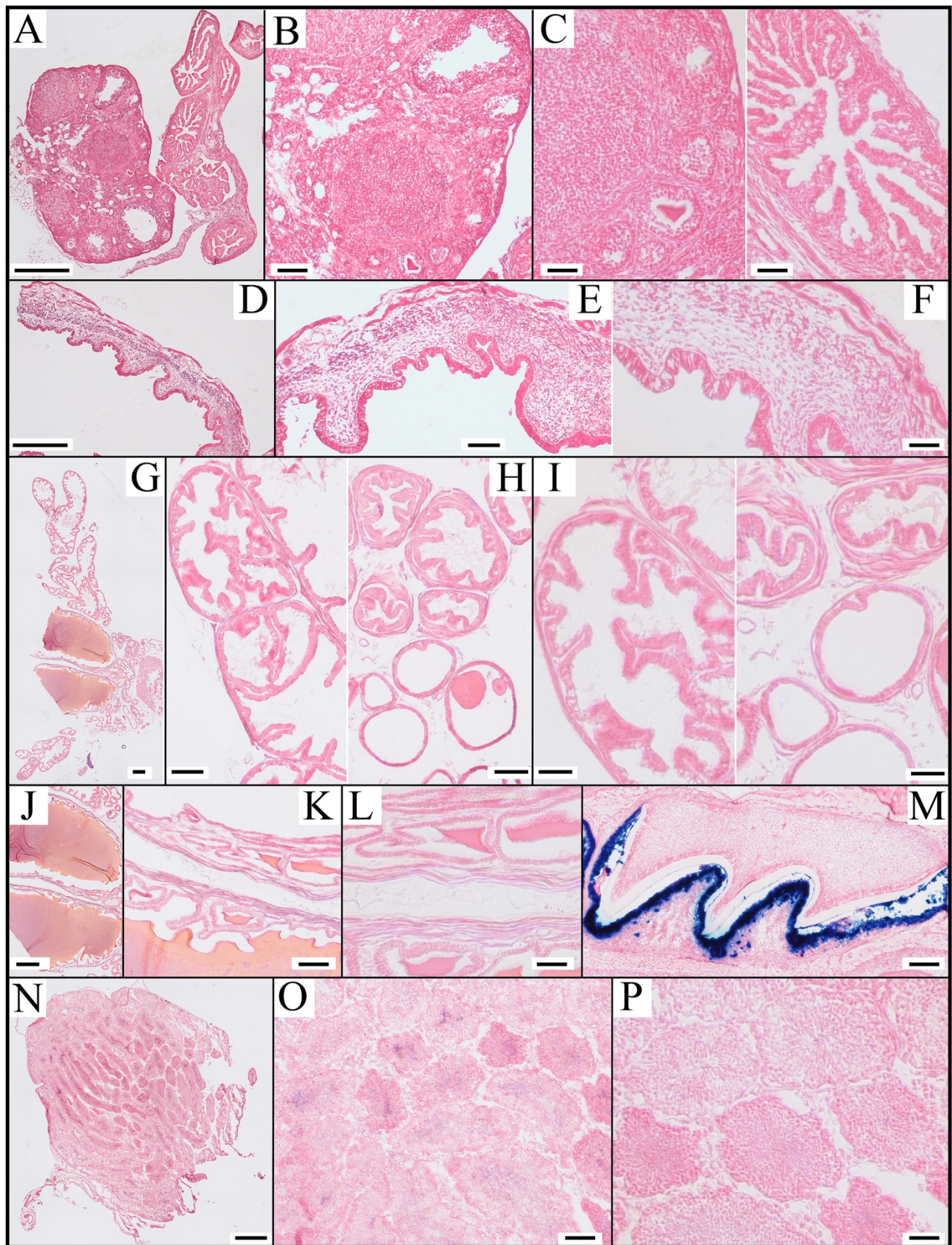


Figure S69. X-gal staining (15.5 h, overnight) of organs. All images are from 7-week-old *Ambn^{lacZ/lacZ}* mice. Tissues were incubated in X-gal overnight to detect even trace expression. All organs tested here were negative, except the developing tooth (panel M). **A-C:** ovary and oviduct (**B:** ovary only); **D-F:** uterus; **G-I:** prostate; **J-L:** seminal vesicle; **M:** Day 6 *Ambn^{lacZ/lacZ}* maxillary first molar (positive control); **N-P:** testis. **Scale Bars:** A, D, G, J, N: 500 μ m; B, E, H, K, M, O: 100 μ m; C, F, I, L, P: 50 μ m.

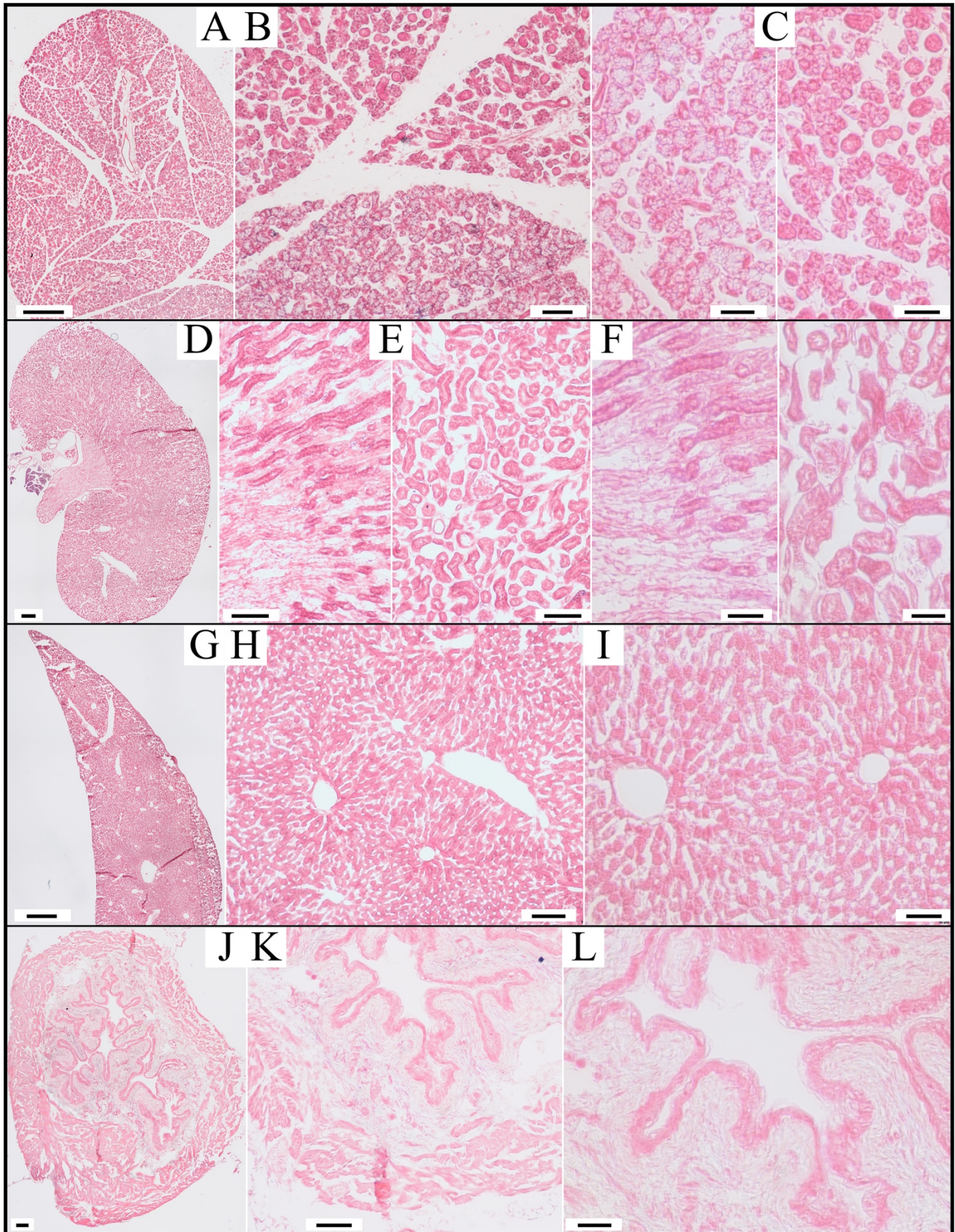


Figure S70. X-gal staining (15.5 h, overnight) of more body organs. All images are from 7-week-old *Ambn*^{lacZ/lacZ} mice. Tissues were incubated in X-gal overnight to detect even trace expression. **A-C:** submandibular salivary gland; **D-F:** kidney; **G-I:** liver; **J-L:** bladder. **Scale Bars:** A, G, J: 500 μ m; B, E, H, K: 100 μ m; C, F, I, L: 50 μ m.