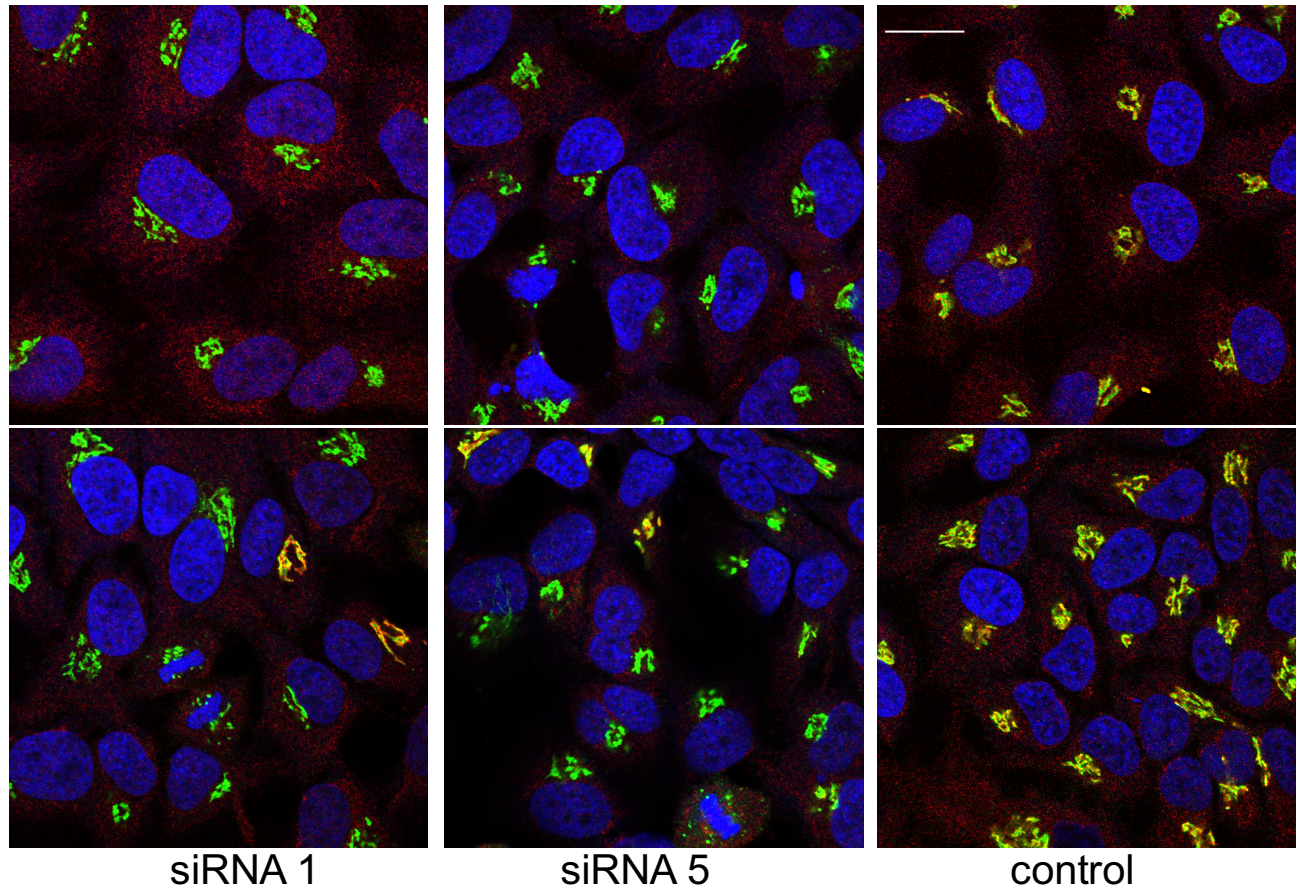


C (for Figure 3)



Supplementary Figure 1. Immunofluorescence to show knockdown efficiencies.

(A) Giantin and control siRNA-treated cells used for Figure 1 were subjected to indirect immunofluorescence for Giantin (red), GM130 (green), and nuclei (blue). Bar, 20 μ m. (B) Giantin (siRNA1 and siRNA5) and control siRNA-treated cells used for Figure 2 were subjected to indirect immunofluorescence for Giantin (red), ManII-GFP (green), and nuclei (blue) shown with the same scale to (A). (C) Giantin (siRNA1 and siRNA5) and control siRNA-treated cells used for Figure 3 were subjected to indirect immunofluorescence for Giantin (red), GM130 (green), and nuclei (blue). Bar, 20 μ m. Both upper and bottom panels are from the same coverslips but under different fields. Giantin-positive cells were rarely observed on the same coverslips, but some are shown in the bottom panels.