

Supporting information

Magnetic Lignosulfonate-Supported Pd Complex: Renewable Resource-Derived Catalyst for Aqueous Suzuki–Miyaura Reaction

Mahmoud Nasrollahzadeh^{*,†} Zahra Issaabadi[†] and Rajender S. Varma^{*,‡}

[†]Department of Chemistry, Faculty of Science, University of Qom, Qom 3716146611, Iran. E-mail: mahmoudnasr81@gmail.com; Fax: +98 25 32103595; Tel: +98 25 32850953

[‡]Regional Centre of Advanced Technologies and Materials, Department of Physical Chemistry, Faculty of Science, Palacky University, Šlechtitelů 27, 783 71 Olomouc, Czech Republic. E-mails: rajvarma@hotmail.com; Varma.Rajender@epa.gov; Fax: +1 (513)-569-7677; Tel.: +1 (513)-487-2701

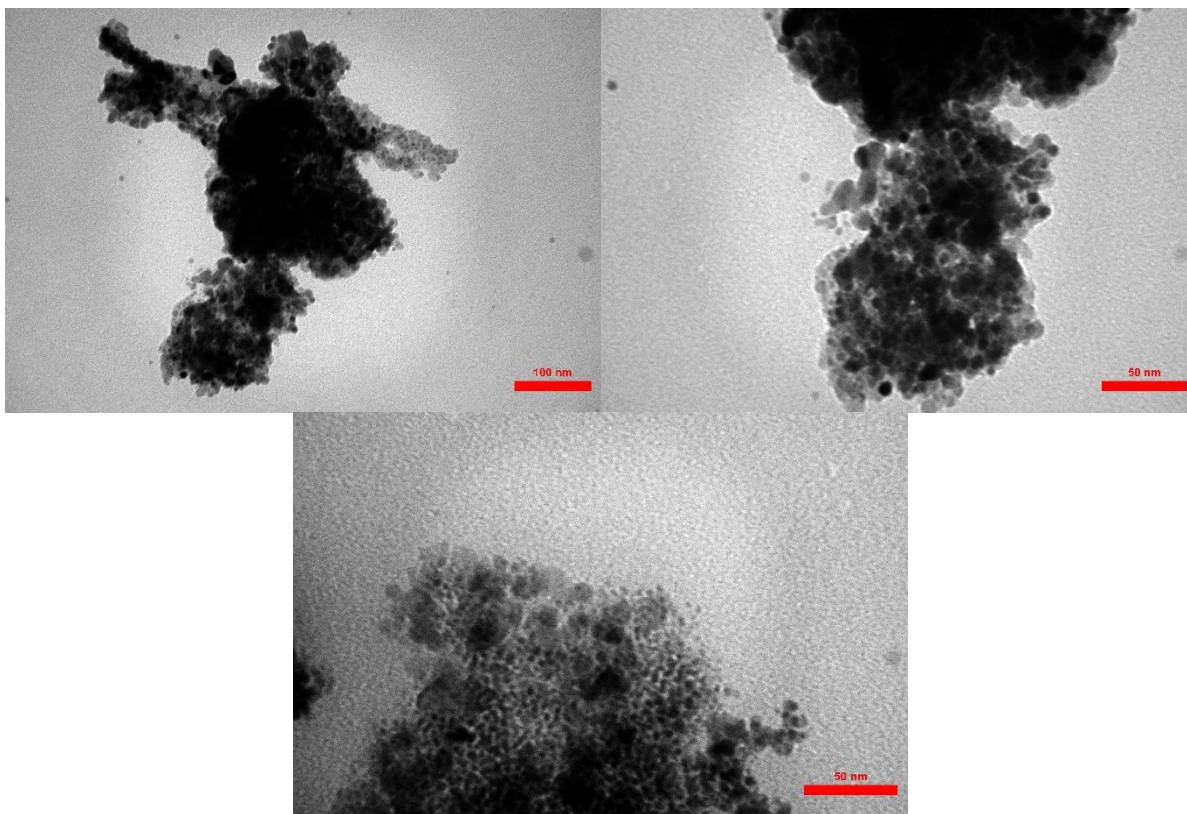


Figure S1. TEM images of recovered FLA-Pd.

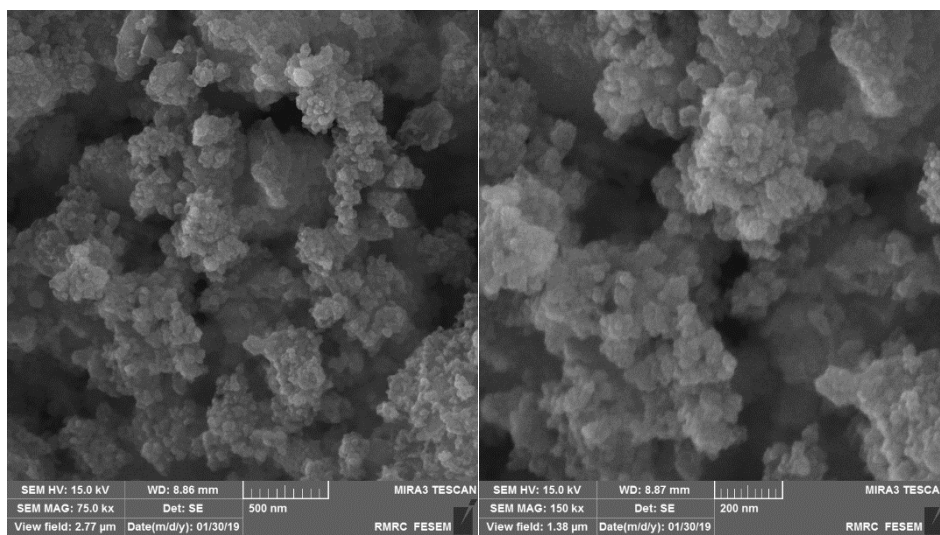


Figure S2. FESEM images of recovered FLA-Pd.