

**Supplementary Information:****Title:**

Effects of endogenous levels of master regulator PrgX and peptide pheromones on inducibility of conjugation in the enterococcal pCF10 system.

**Running Title:**

Inducibility of pCF10 conjugative transfer

**Authors:**

Rebecca J B Erickson<sup>1</sup>, Dawn A Manias<sup>1</sup>, Wei-Shou Hu<sup>2</sup>, and Gary M Dunny<sup>1\*</sup>

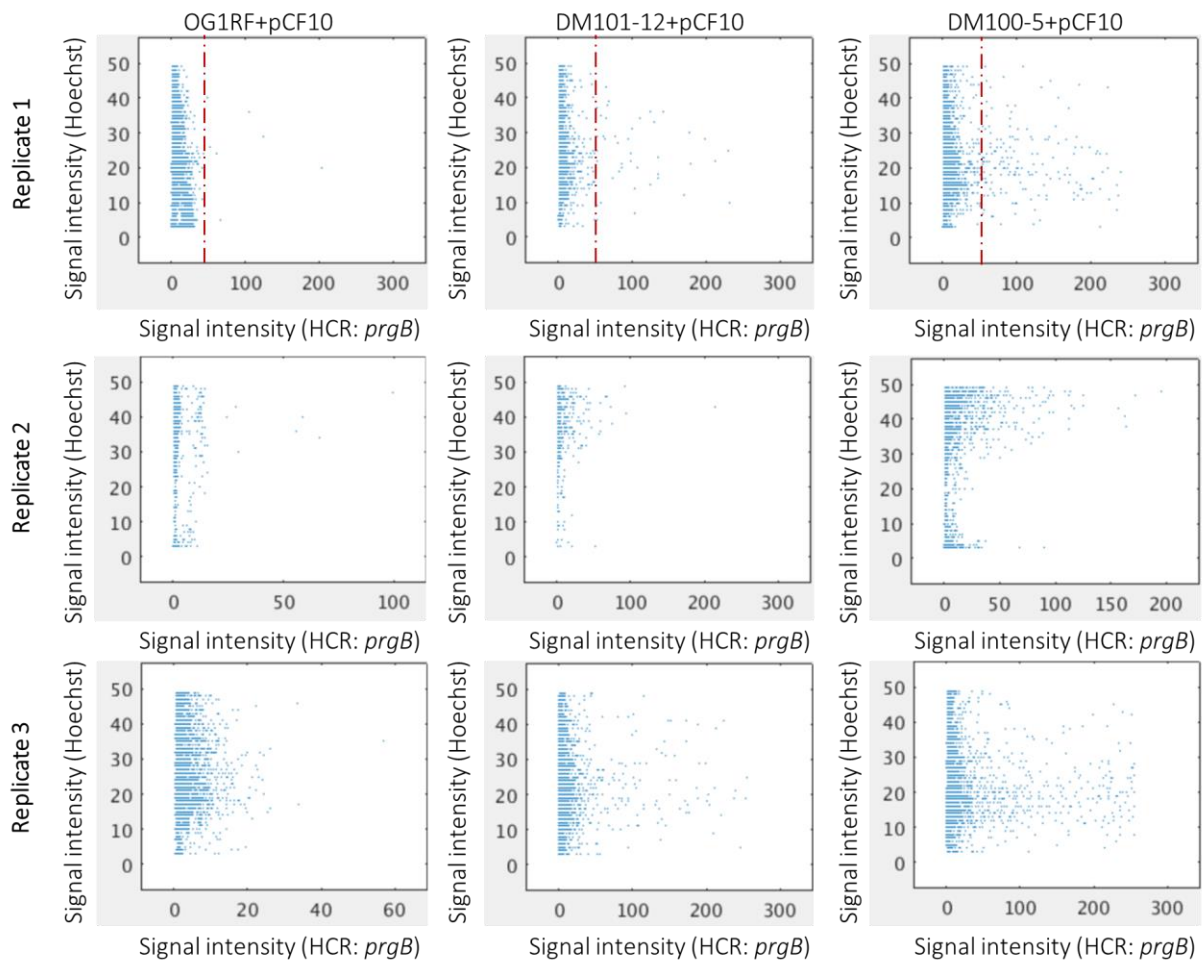
**Contact Information:**

<sup>1</sup>Department of Microbiology and Immunology, University of Minnesota Medical School, Microbiology Research Facility, 689 23<sup>rd</sup> Ave SE, Minneapolis, MN 55455, USA.

<sup>2</sup>Department of Chemical Engineering and Materials Science, University of Minnesota, Amundson Hall, 421 Washington Ave SE, Minneapolis, MN 55455, USA.

\*For correspondence. E-mail [dunny001@umn.edu](mailto:dunny001@umn.edu); Tel. 612-625-9930.

**Keywords:** antibiotic resistance, microscopy, resistance factors, plasmids, gene expression regulation, transcriptional activation (from MeSH list: [nlm.nih.gov/mesh](http://nlm.nih.gov/mesh))



**Fig. S1.** HCR labeling of *prgB* of induced cells shows that cells with increased levels of PrgX are more inducible by low levels of exogenous **C**. Single cell fluorescent intensity data from three replicates of the induction and HCR labeling experiment. Relative fluorescence of individual cells are plotted based on the per cell average fluorescence intensity of Hoechst:33342 (DNA label) and HCR: *prgB* (induced transcript label). The dashed line indicates the threshold value of 50, above which cells were considered to be induced (see Methods for further information).