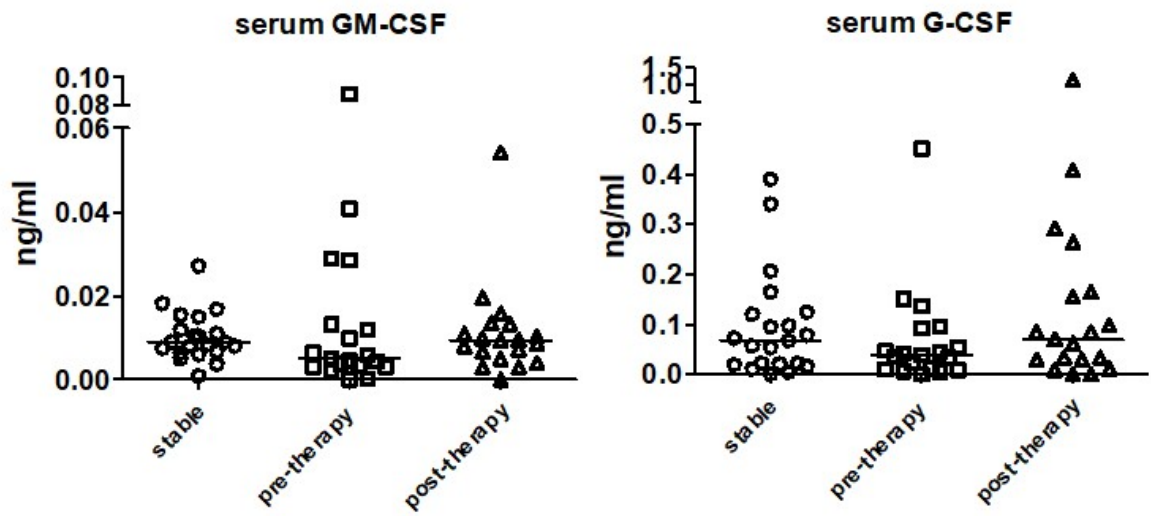


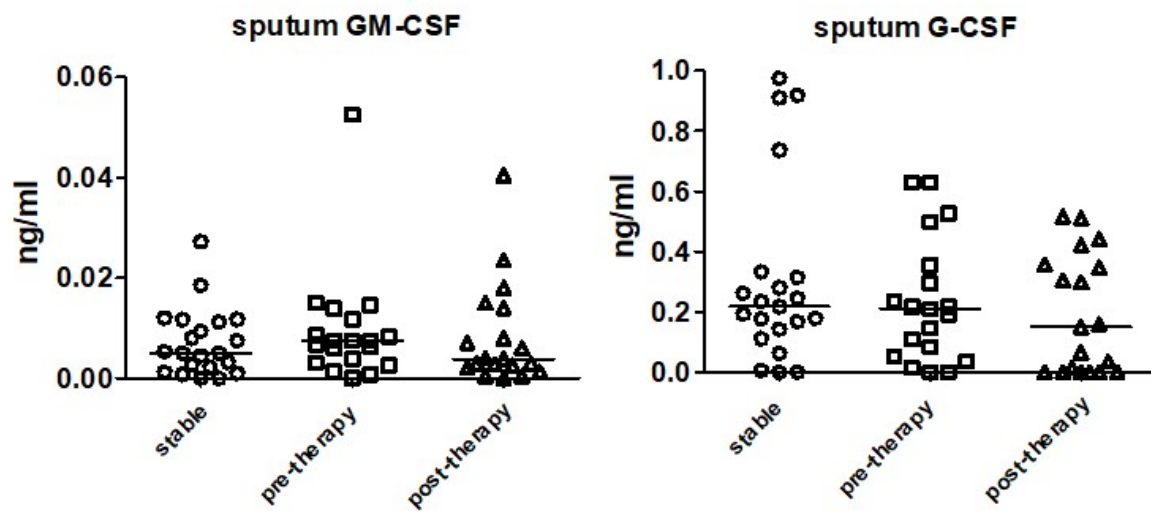
**G-CSF AND GM-CSF MODIFY NEUTROPHIL FUNCTIONS AT CONCENTRATIONS
FOUND IN CYSTIC FIBROSIS**

**Stefano Castellani^{1§}, Susanna D'Oria^{2§}, Anna Diana³, Angela Maria Polizzi³, Sante Di Gioia¹,
Maria Addolorata Marigliò², Lorenzo Guerra⁴, Maria Favia⁴, Angela Vinella², Giuseppina
Leonetti⁵, Domenica De Venuto⁵, Crescenzo Gallo⁶, Pasqualina Montemurro^{2*}, Massimo
Conese^{1*}**

A



B



Supplementary Fig. 1 Serum (A) and sputum (B) levels of GM-CSF and G-CSF in CF patients in stable conditions (n=21) and CF patients in acute exacerbation (n=19) before (pre) and after (post) a course of antibiotic therapy. The median is represented as a solid line.