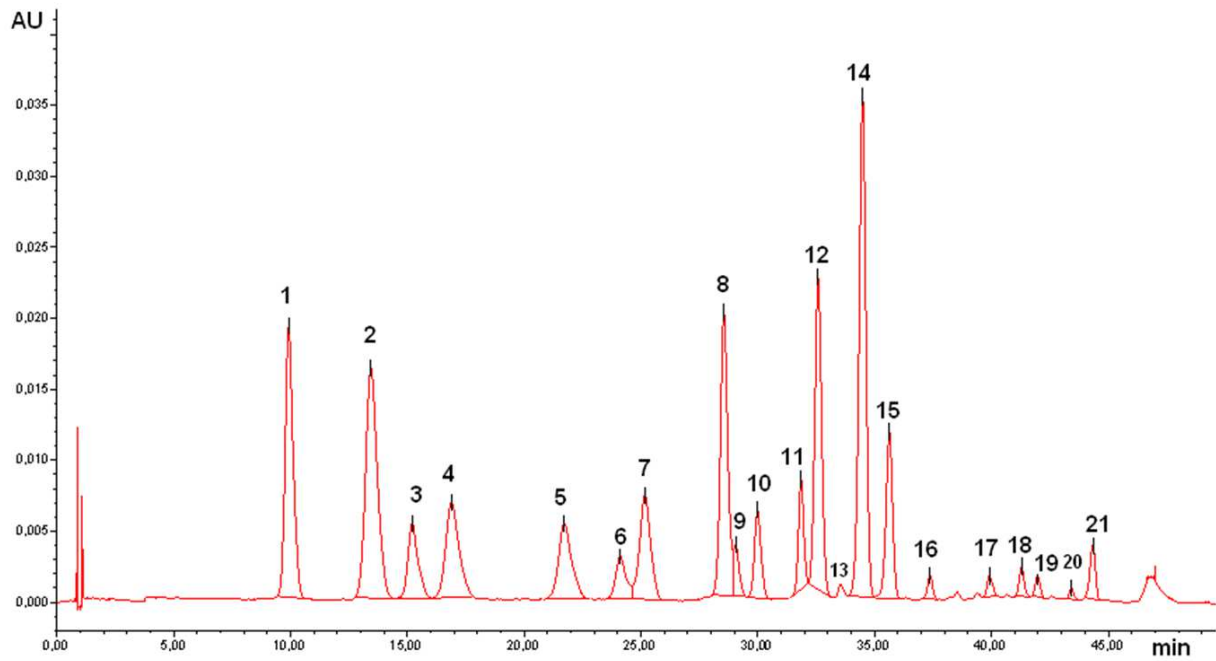


**SUPPLEMENTARY FIGURE S3.** Chromatogram integrated at 520 nm of Brigitta blueberry fruit.



Peak	Anthocyanin
1	D-gal
2	D-glc
3	Cy-gal
4	D-ara
5	Cy-glc
6	Cy-ara
7	Pet-gal
8	Pet-glc
9	Peo-gal
10	Pet-ara
11	Peo-glc
12	Mv-gal
13	Peo-ara
14	Mv-glc
15	Mv-ara
16	D-Hex-Ac
17	Cy-Hex-Ac
18	Pet-Hex-Ac
19	Mv-gal-Ac
20	Peo-Hex-Ac
21	Mv-glc-Ac

D: Delphinidin, Cy: Cyanidin, Pet: Petunidin, Peo: Peonidin,  
Mv: Malvidin, gal: galactose, glc: glucose, ara: arabinose,  
Hex: Hexose, Ac: acetate.