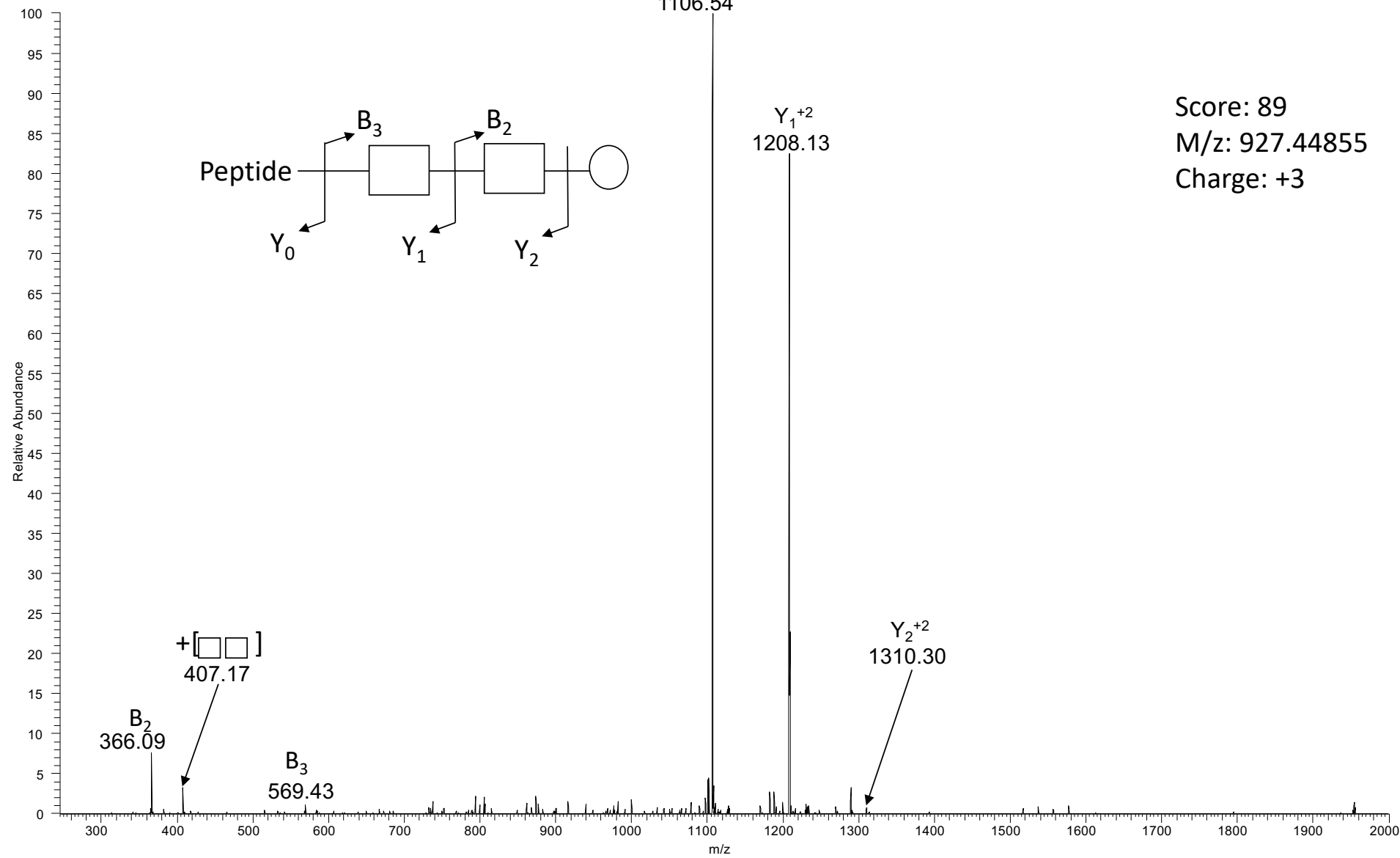


### Supplementary Data 4: Identified *Burkholderia pseudomallei* glycopeptides observed across strains

Strain	Gene	Protein name	Uniprot accession	m/z	Charge	MH+	Peptide mass	Glycan mass	Peptide sequence	MASCOT ion Score	Page
MSHR 831	eco	Ecotin	Q63W37	927.4486	3	2780.3298	2212.07	568.26	ASASTPAAGADAASSPKPAVEDIK	89	2 and 3
MSHR 1967	eco	Ecotin	Q63W37	927.4494	3	2780.3323	2212.07	568.26	ASASTPAAGADAASSPKPAVEDIK	74	4 and 5
MSHR 1824	eco	Ecotin	Q63W37	927.4500	3	2780.3342	2212.07	568.26	ASASTPAAGADAASSPKPAVEDIK	75	6 and 7
MSHR 715	eco	Ecotin	Q63W37	927.4468	3	2780.3246	2212.07	568.26	ASASTPAAGADAASSPKPAVEDIK	74	8 and 9
MSHR 8582	eco	Ecotin	Q63W37	927.4498	3	2780.3336	2212.07	568.26	ASASTPAAGADAASSPKPAVEDIK	97	10 and 11
MSHR 9219	BPSL3095	Putative membrane protein	Q63QC8	813.8766	2	1626.7524	1058.52	568.23	PAVAASAGDGSR	27	12 and 13
MSHR 9219	eco	Ecotin	Q63W37	927.4515	3	2780.3530	2212.11	568.24	ASASTPAAGADAASSPKPAVEDIK	100	14 and 15
MSHR 9138	eco	Ecotin	Q63W37	927.4515	3	2780.3530	2212.11	568.24	ASASTPAAGADAASSPKPAVEDIK	80	16 and 17
MSHR 9443	-	-	-	742.3361	2	1483.6714	815.43	668.25	AEAASAPAK	25	18 and 19
MSHR 9443	eco	Ecotin	Q63W37	927.4524	3	2780.3556	2212.11	568.25	ASASTPAAGADAASSPKPAVEDIK	117	20 and 21

**Supplementary Data 4. Identified *Burkholderia pseudomallei* Glycopeptides observed across strains.** A total of 10 unique glycopeptides were observed within whole cell proteome samples of *B. pseudomallei*. For assigned glycopeptides the *B. pseudomallei* strain, gene, protein name, uniprot accession (mapped to *B. pseudomallei* K96243), observed m/z, charge state, MH+ mass, peptide mass, glycan, peptide sequence, MASCOT ion score and containing annotated CID and HCD data are provided.

# ITMS-CID

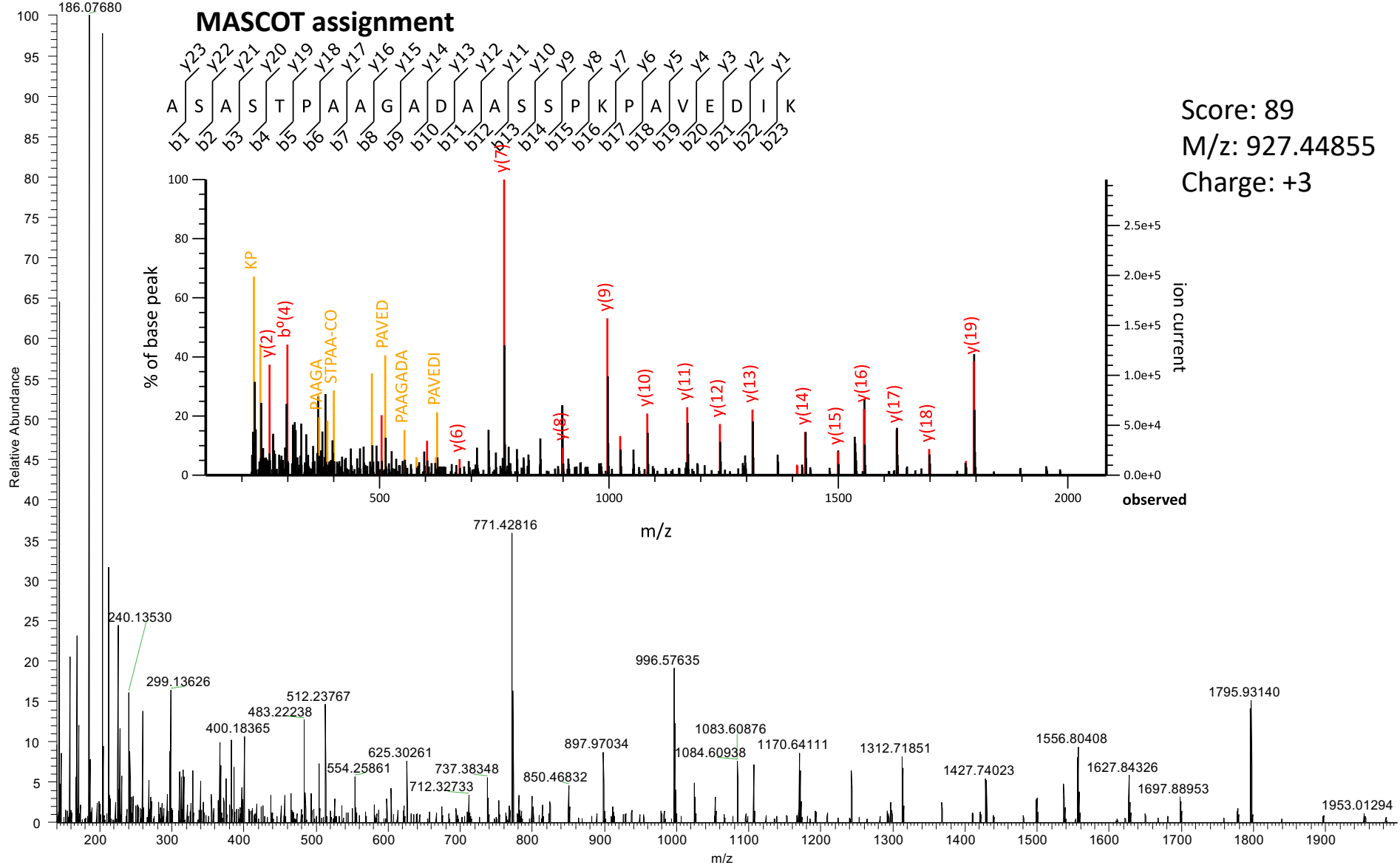


Score: 89

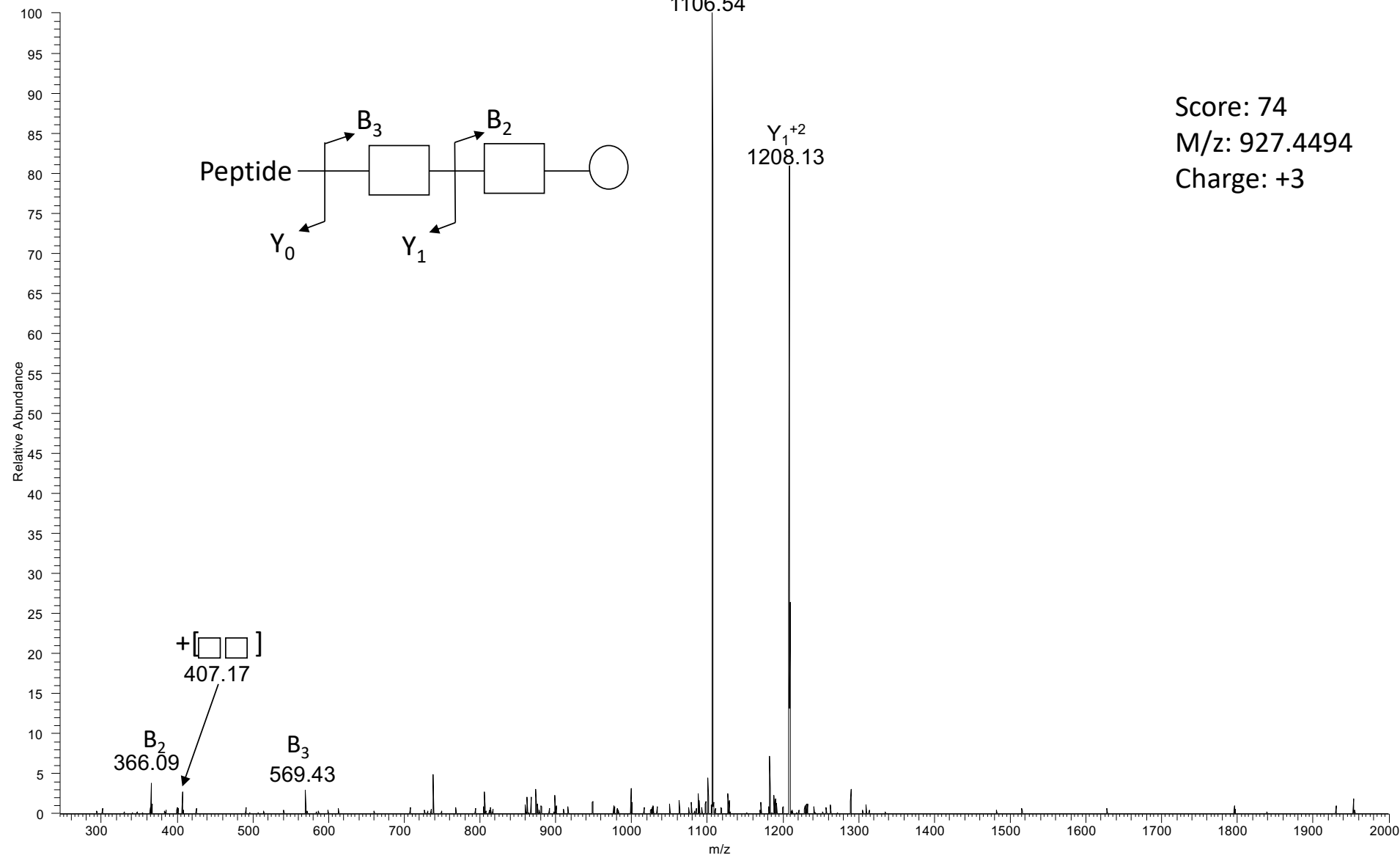
M/z: 927.44855

Charge: +3

FTMS-HCD



# ITMS-CID

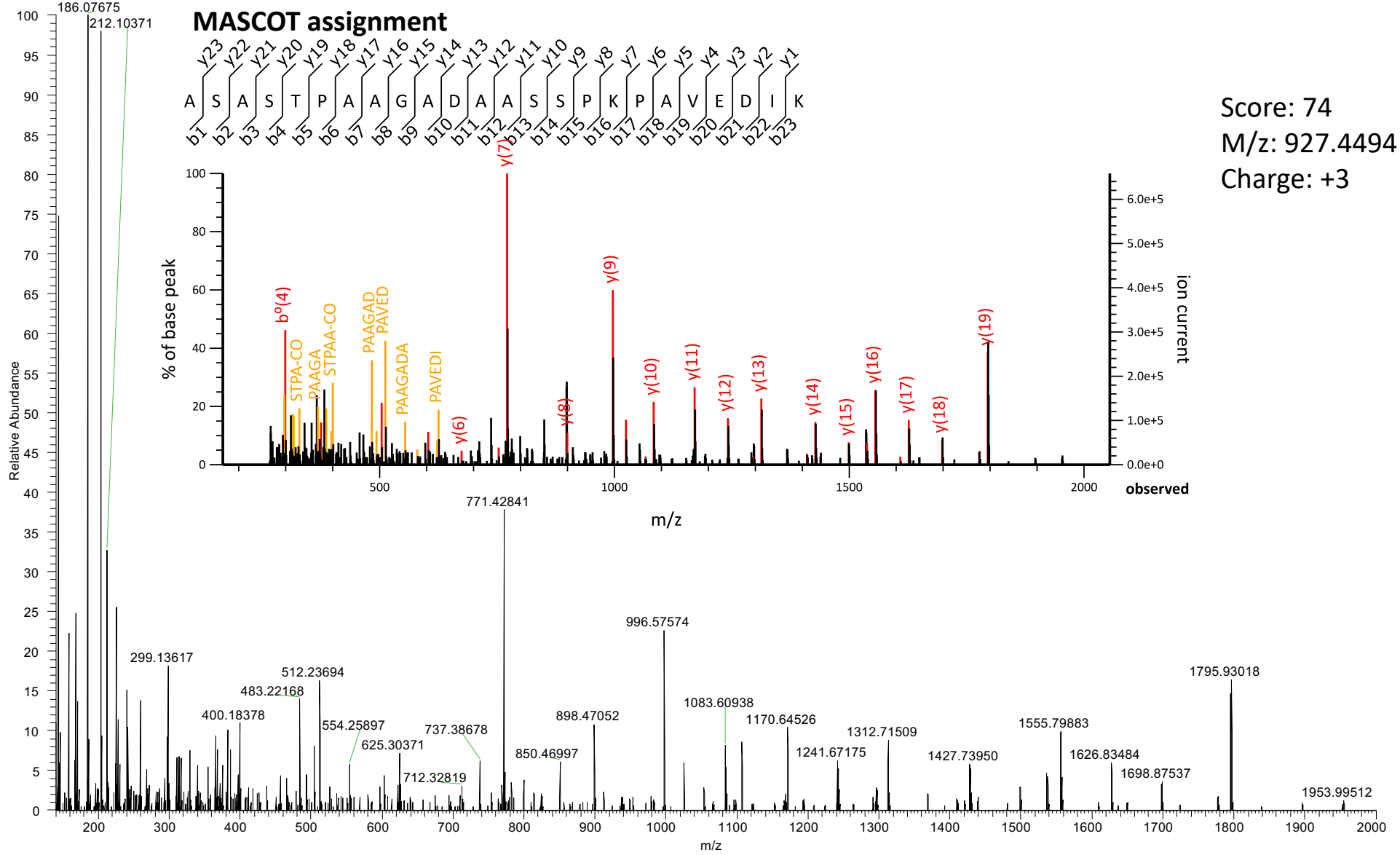


Score: 74

M/z: 927.4494

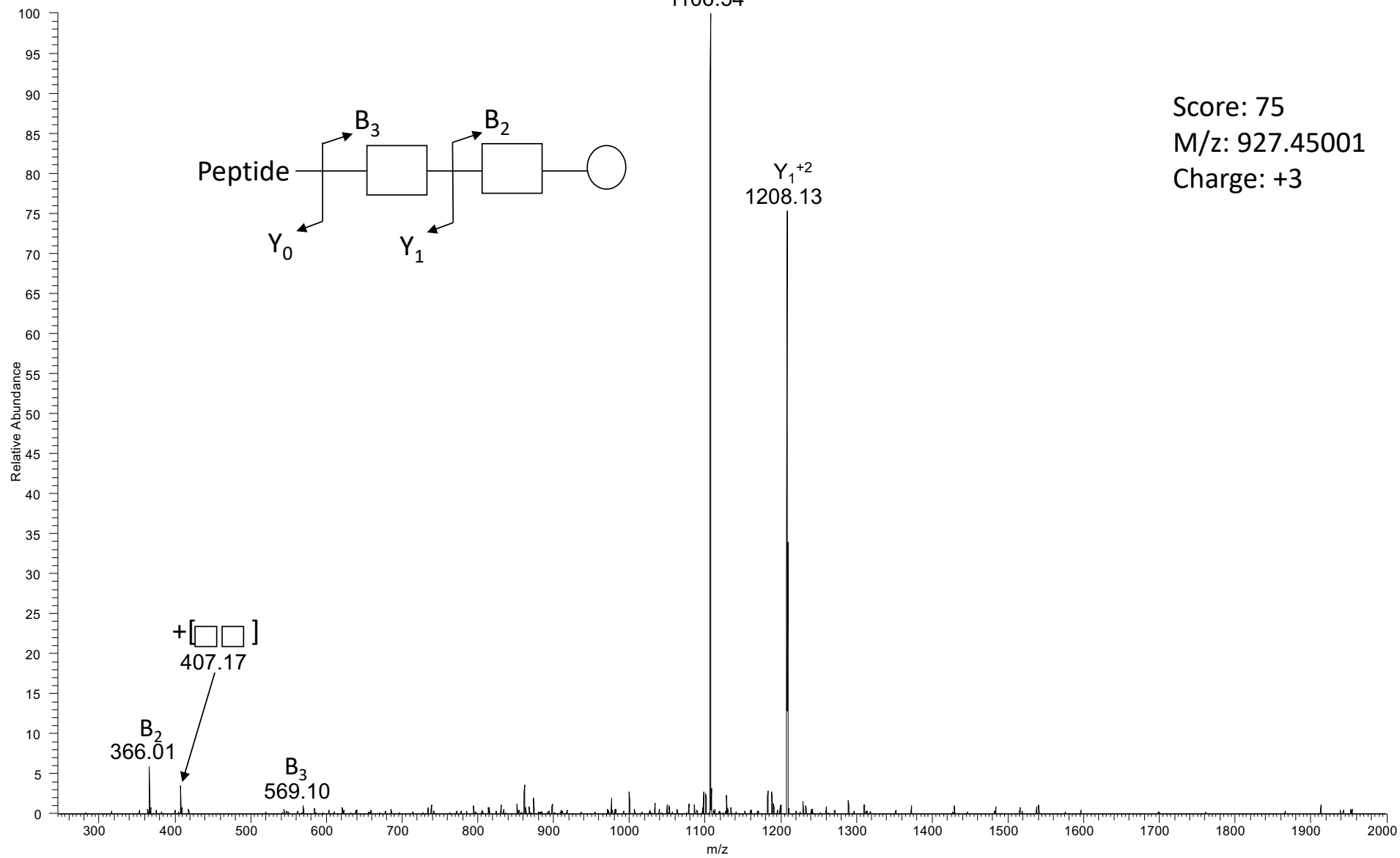
Charge: +3

FTMS-HCD



Score: 74  
 M/z: 927.4494  
 Charge: +3

# ITMS-CID

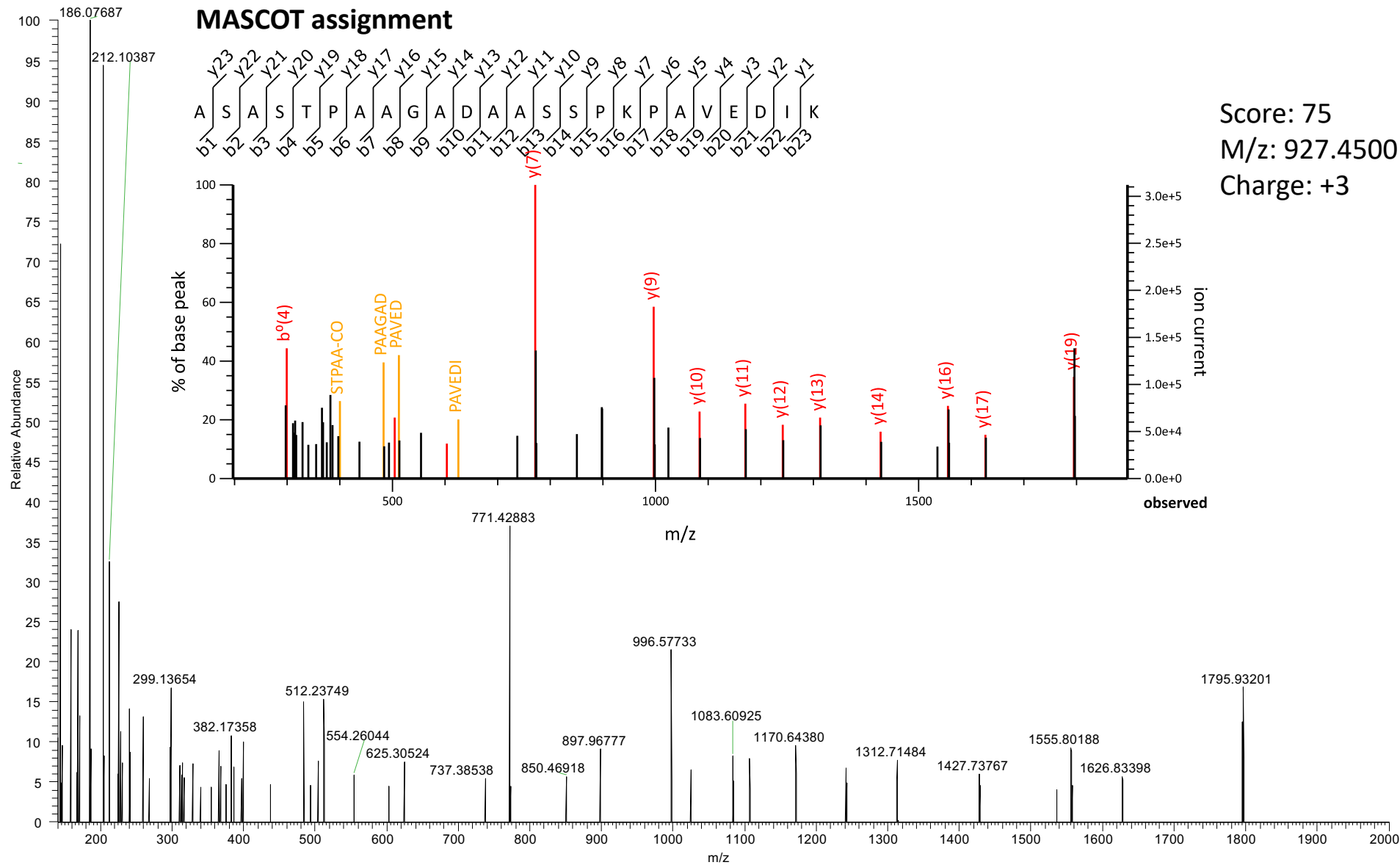


Score: 75

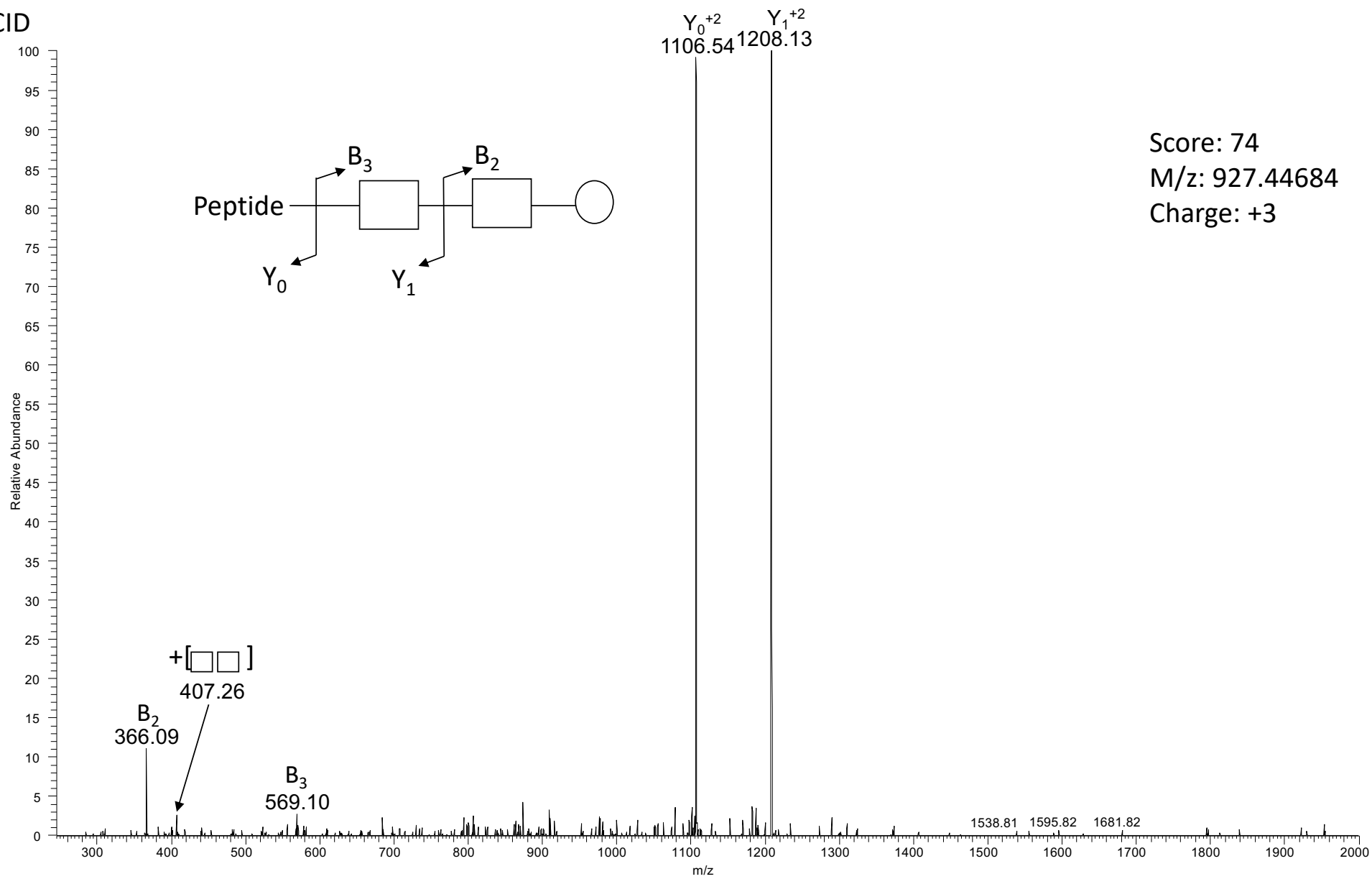
M/z: 927.45001

Charge: +3

FTMS-HCD



# ITMS-CID



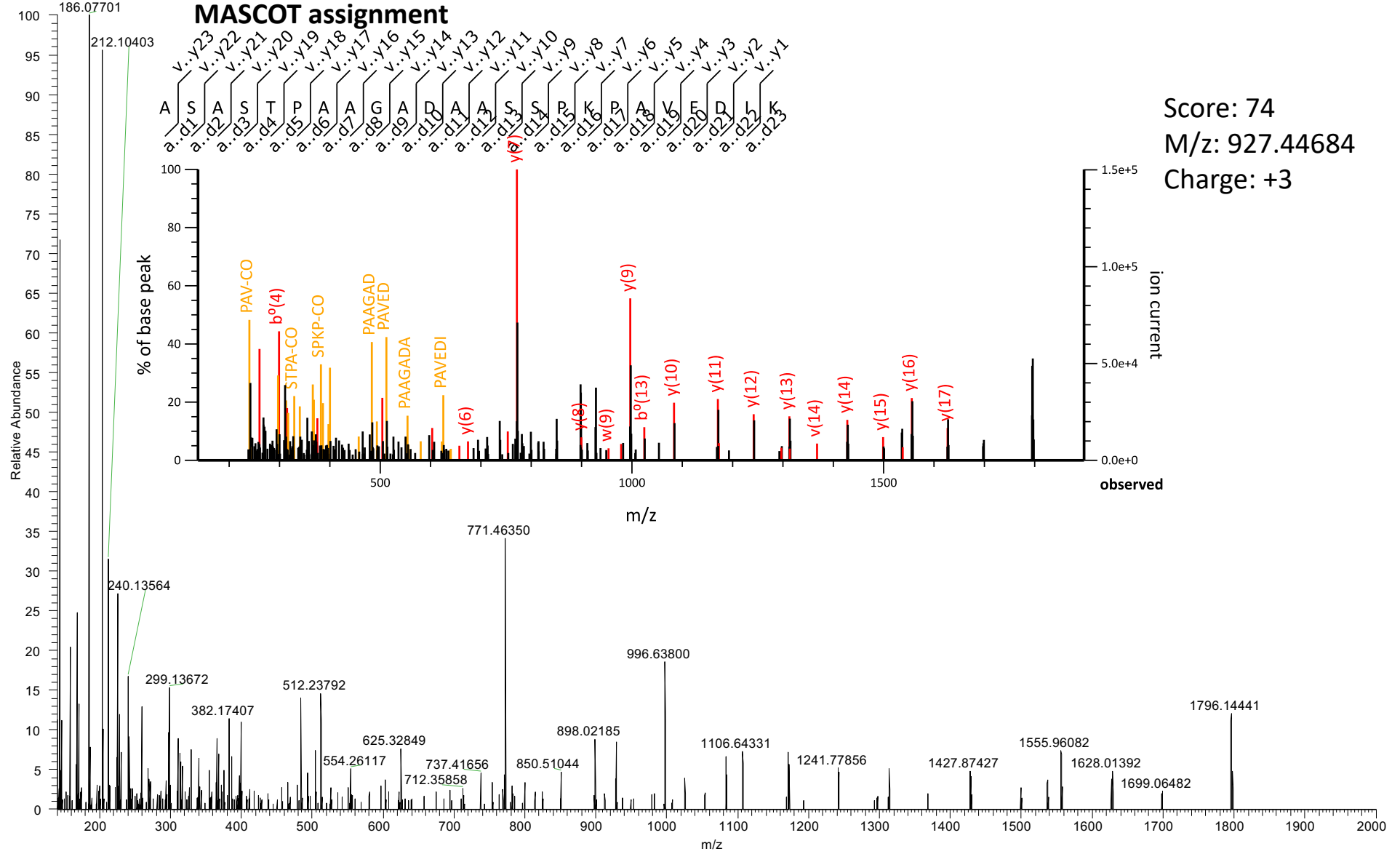
Score: 74

M/z: 927.44684

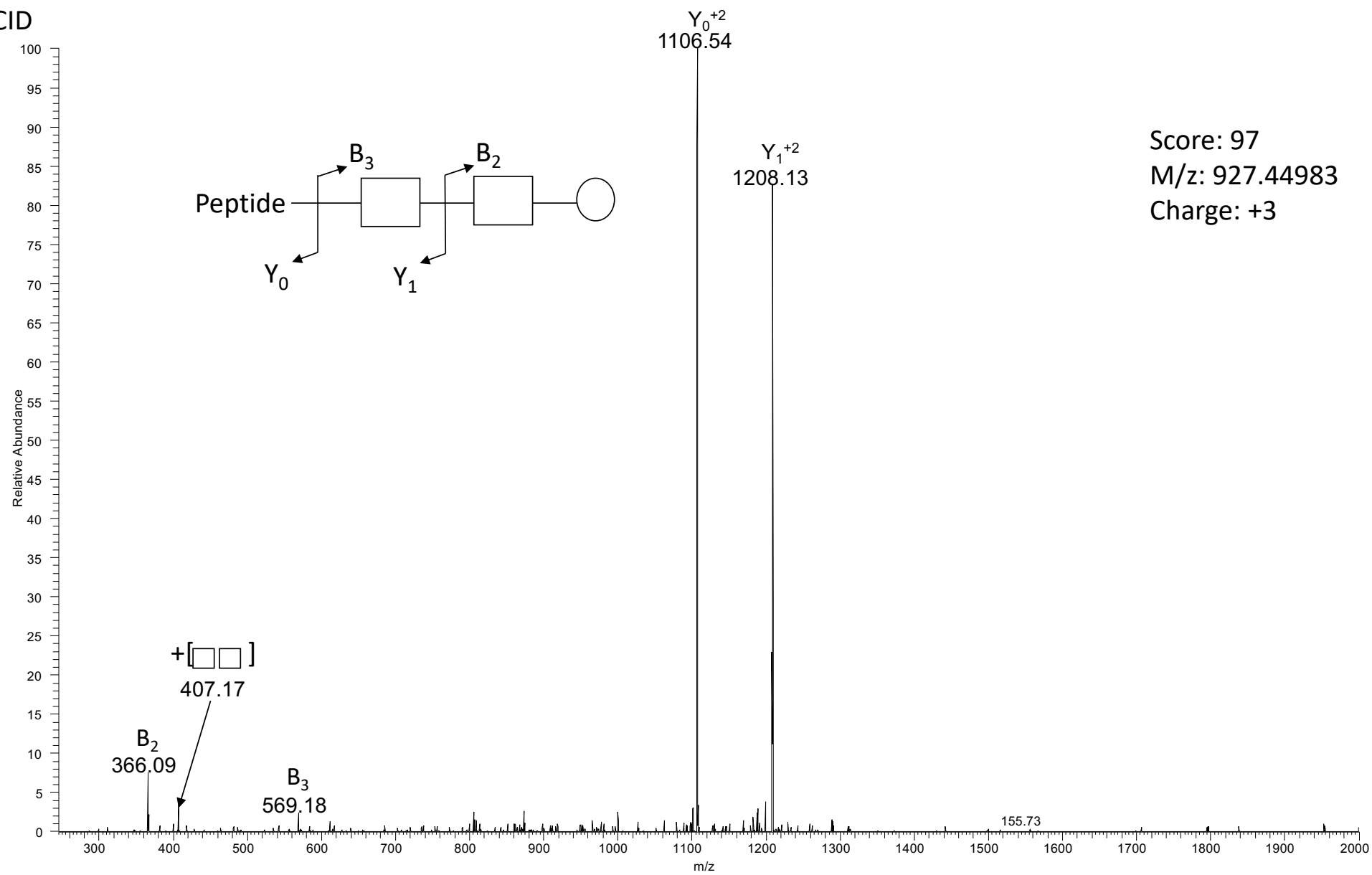
Charge: +3



FTMS-HCD

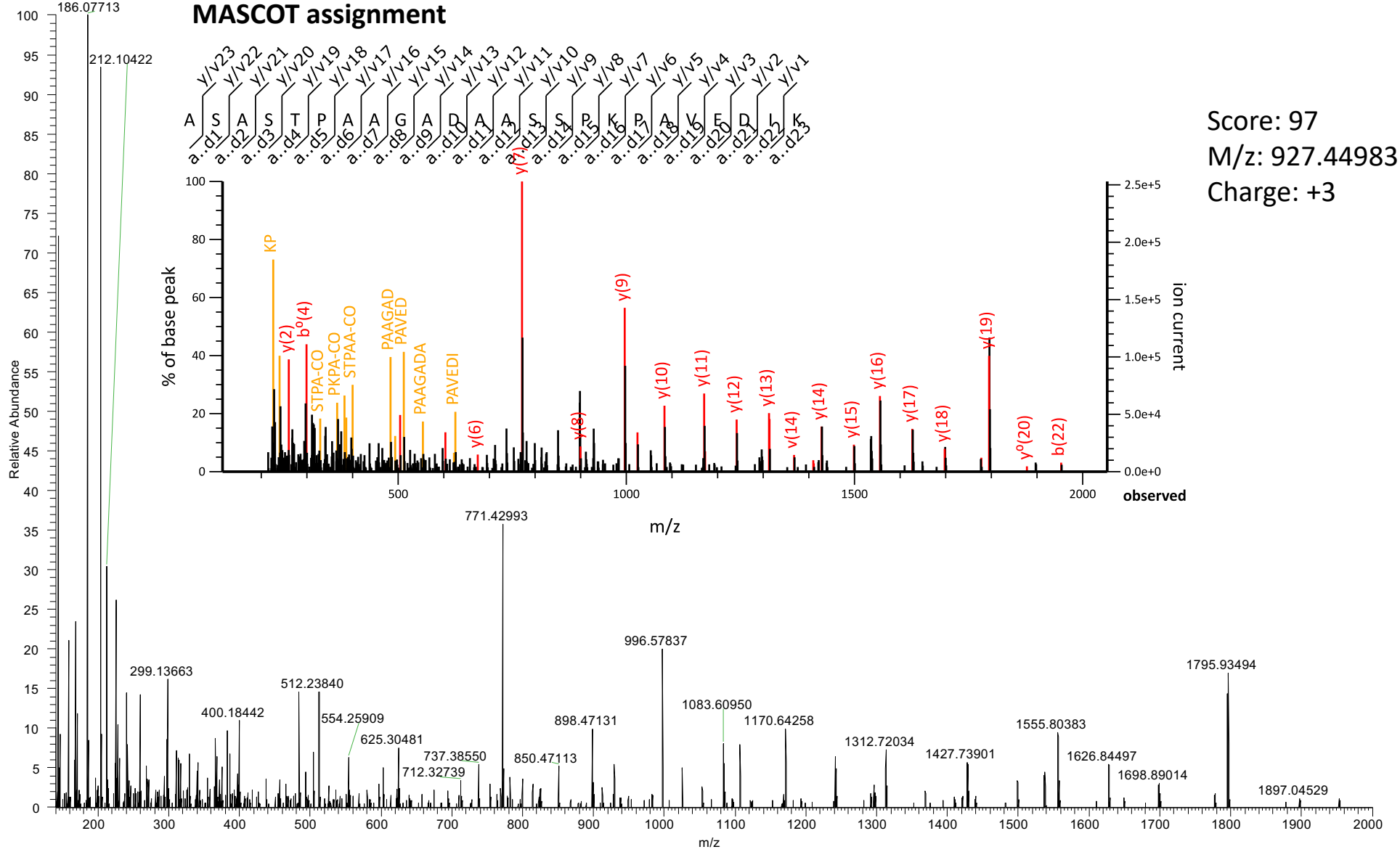


# ITMS-CID

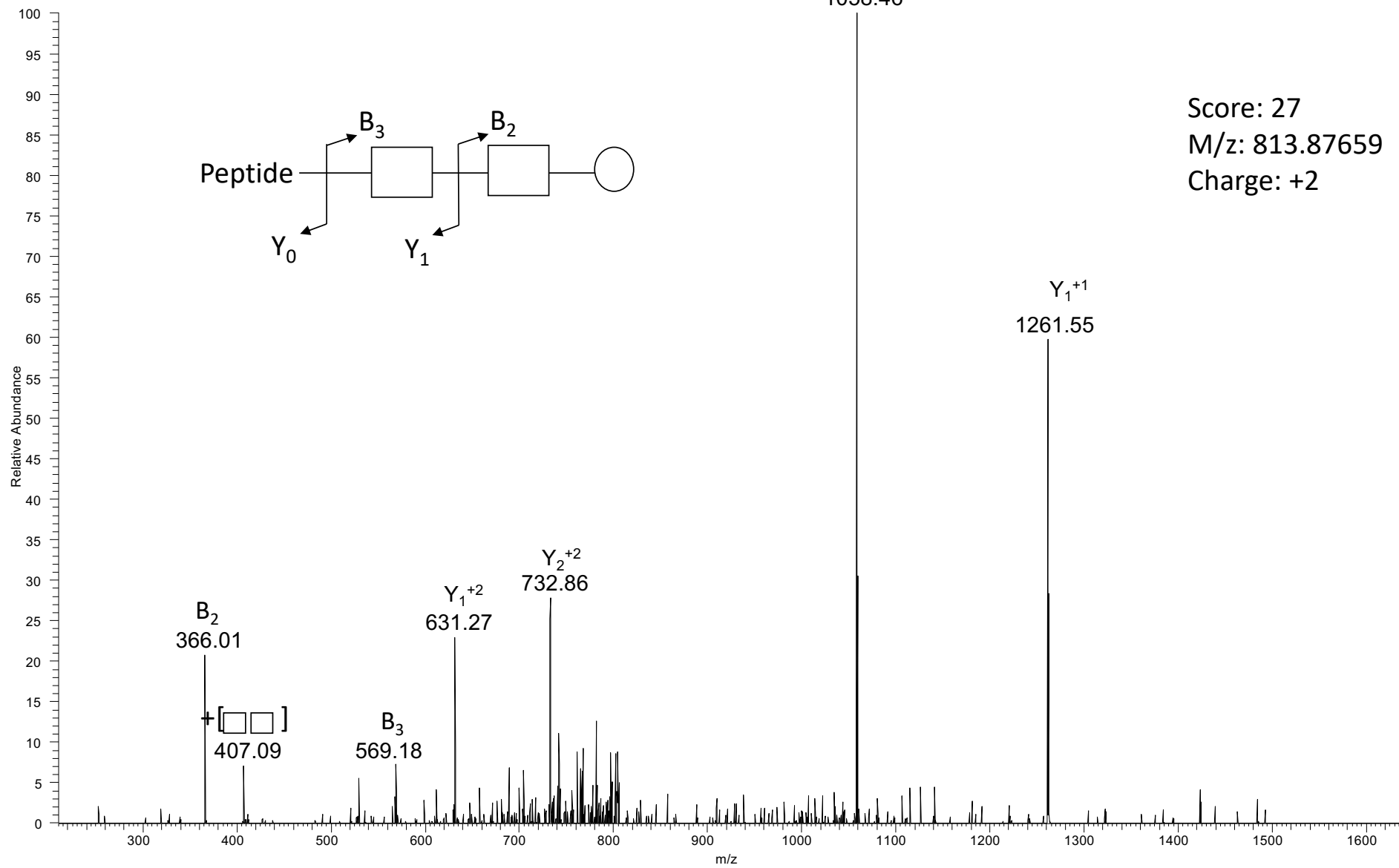


Score: 97  
M/z: 927.44983  
Charge: +3

FTMS-HCD

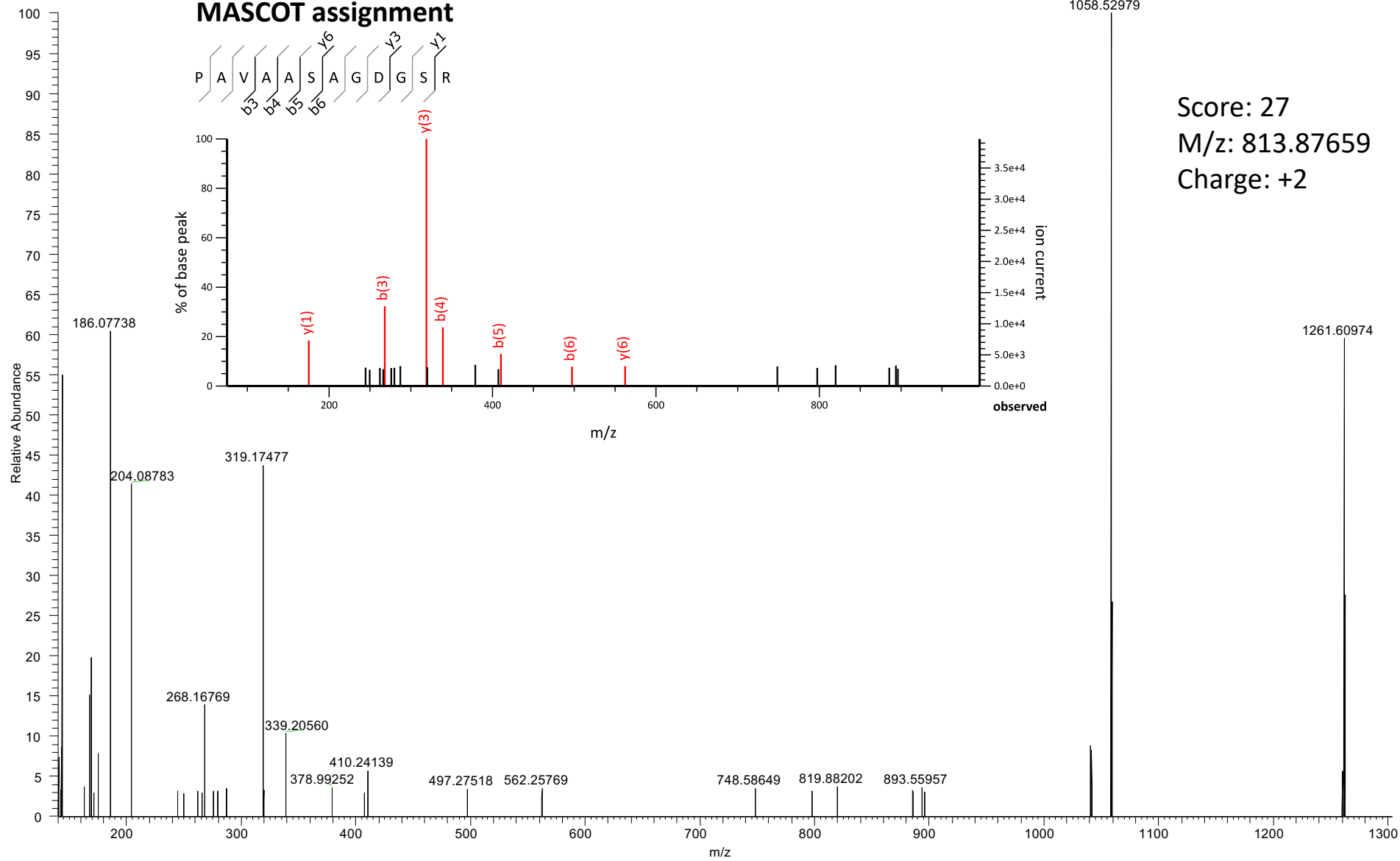


# ITMS-CID

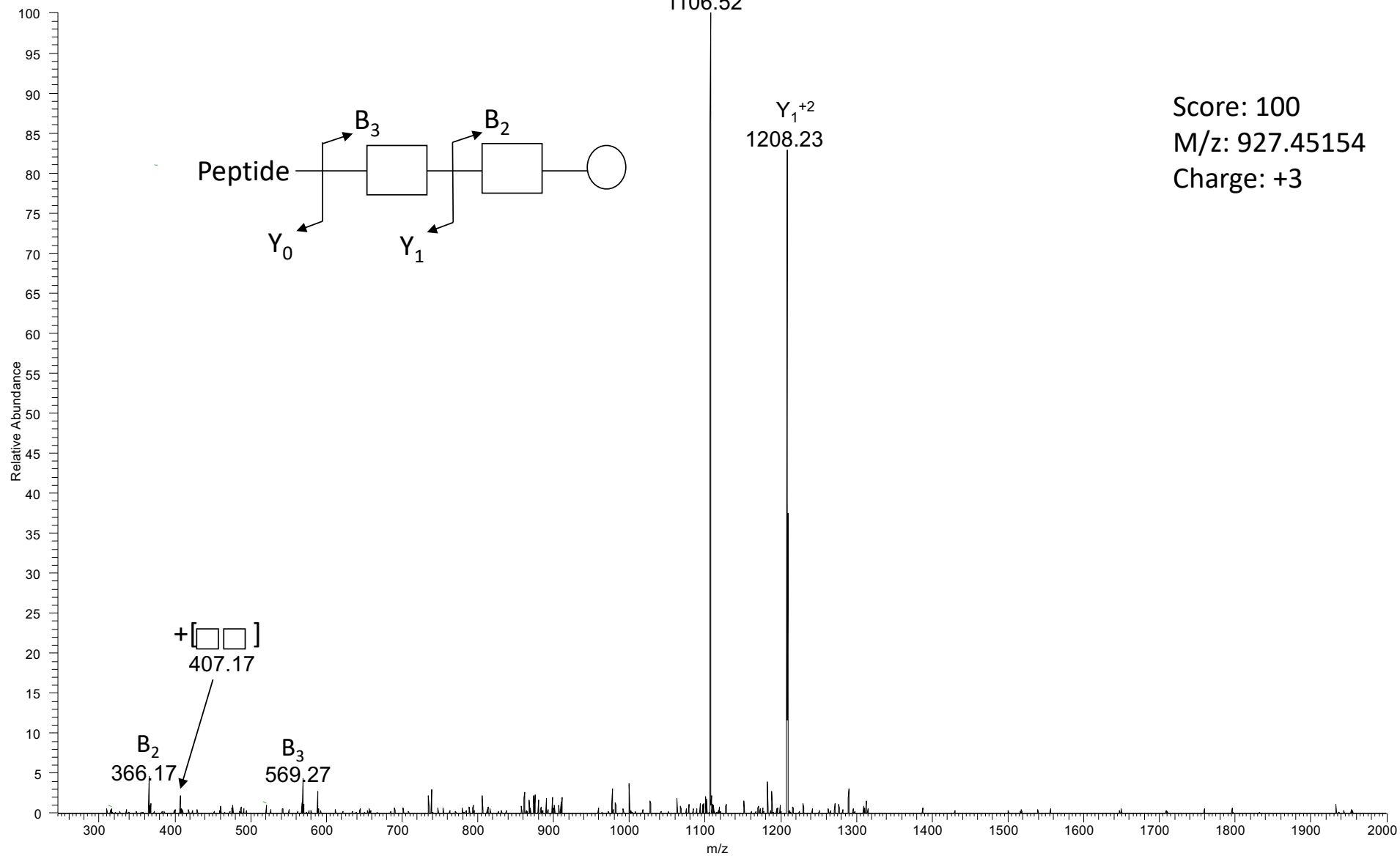


Score: 27  
M/z: 813.87659  
Charge: +2

FTMS-HCD



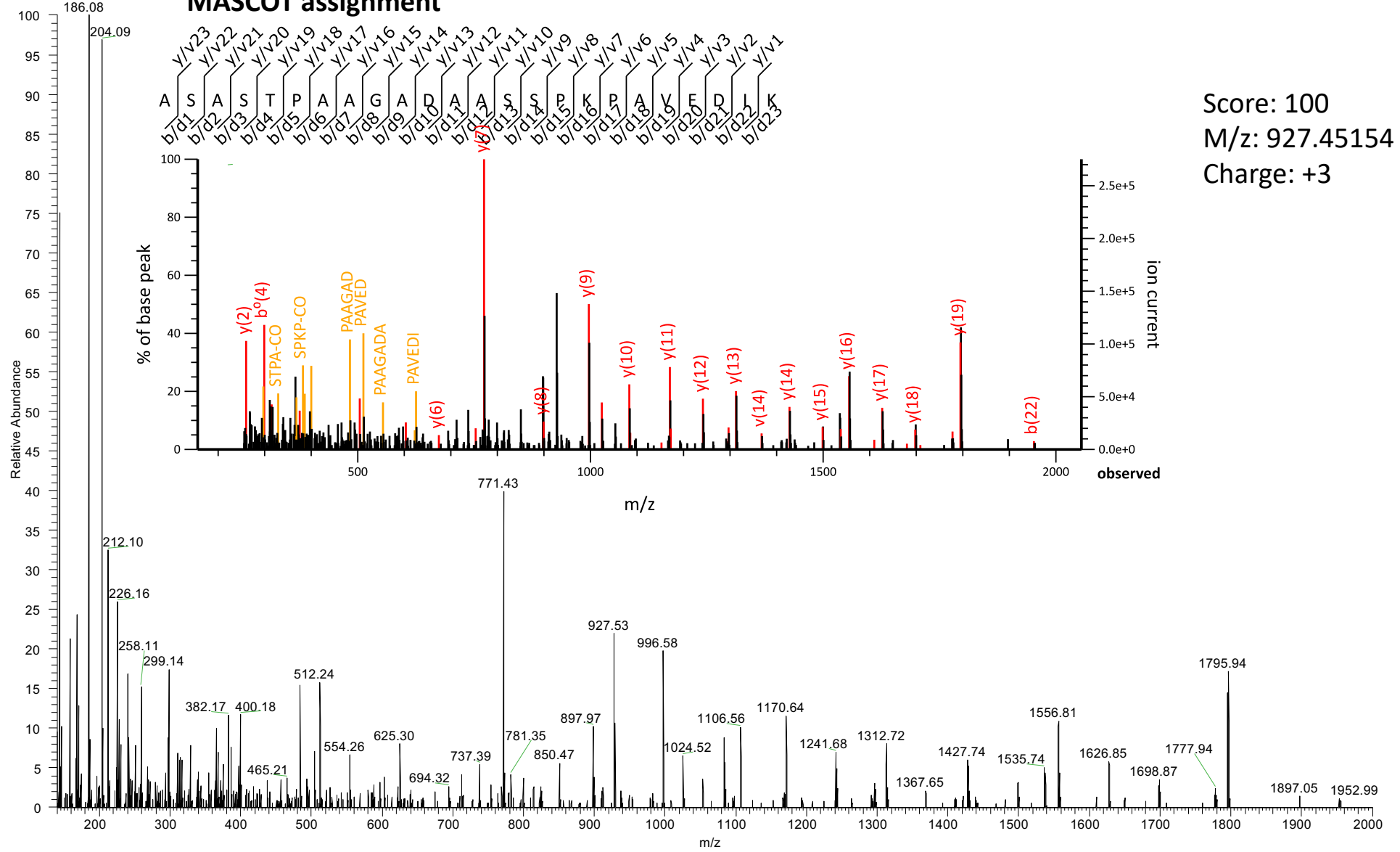
# ITMS-CID



Score: 100  
M/z: 927.45154  
Charge: +3

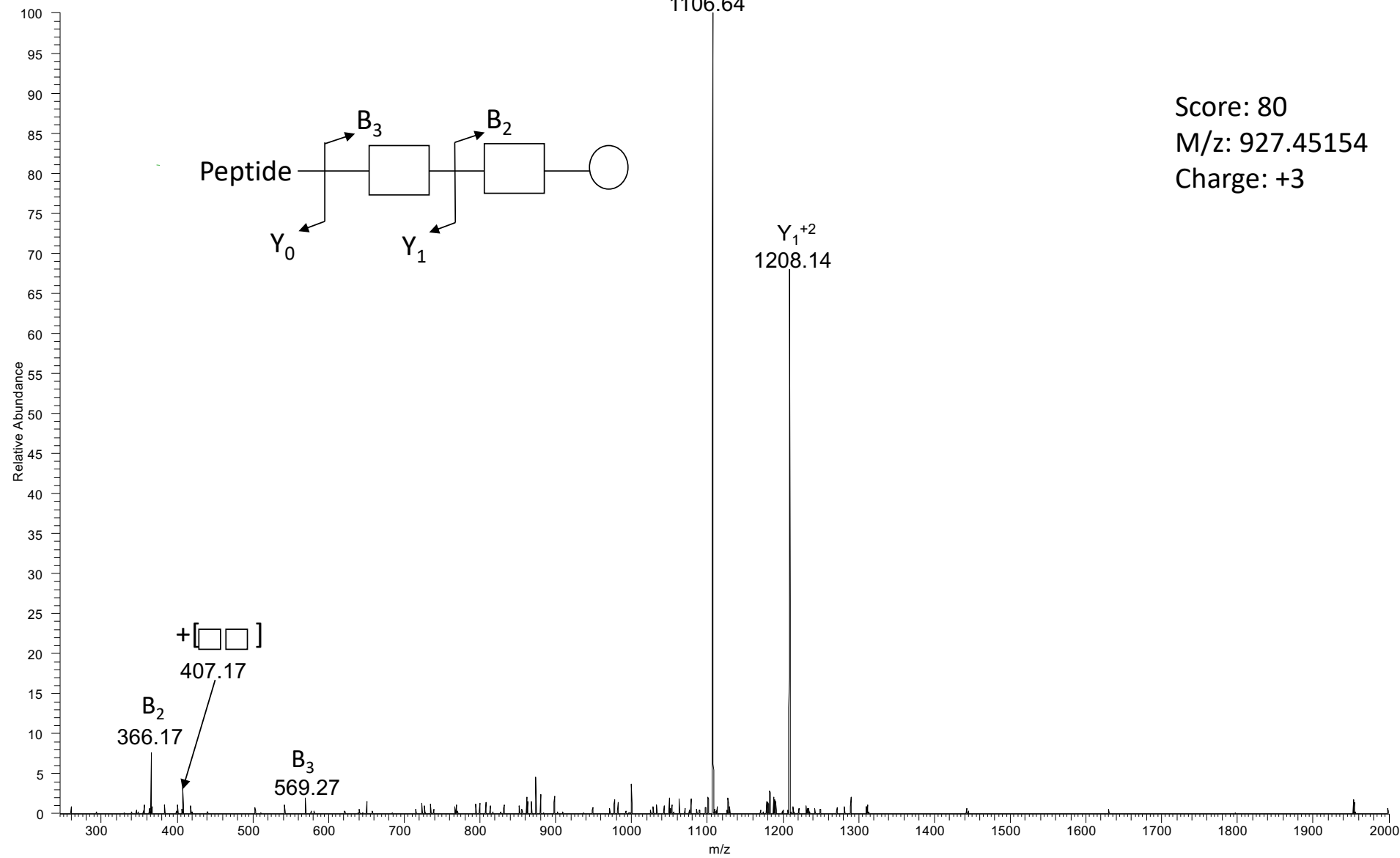
FTMS-HCD

MASCOT assignment



Score: 100  
M/z: 927.45154  
Charge: +3

# ITMS-CID



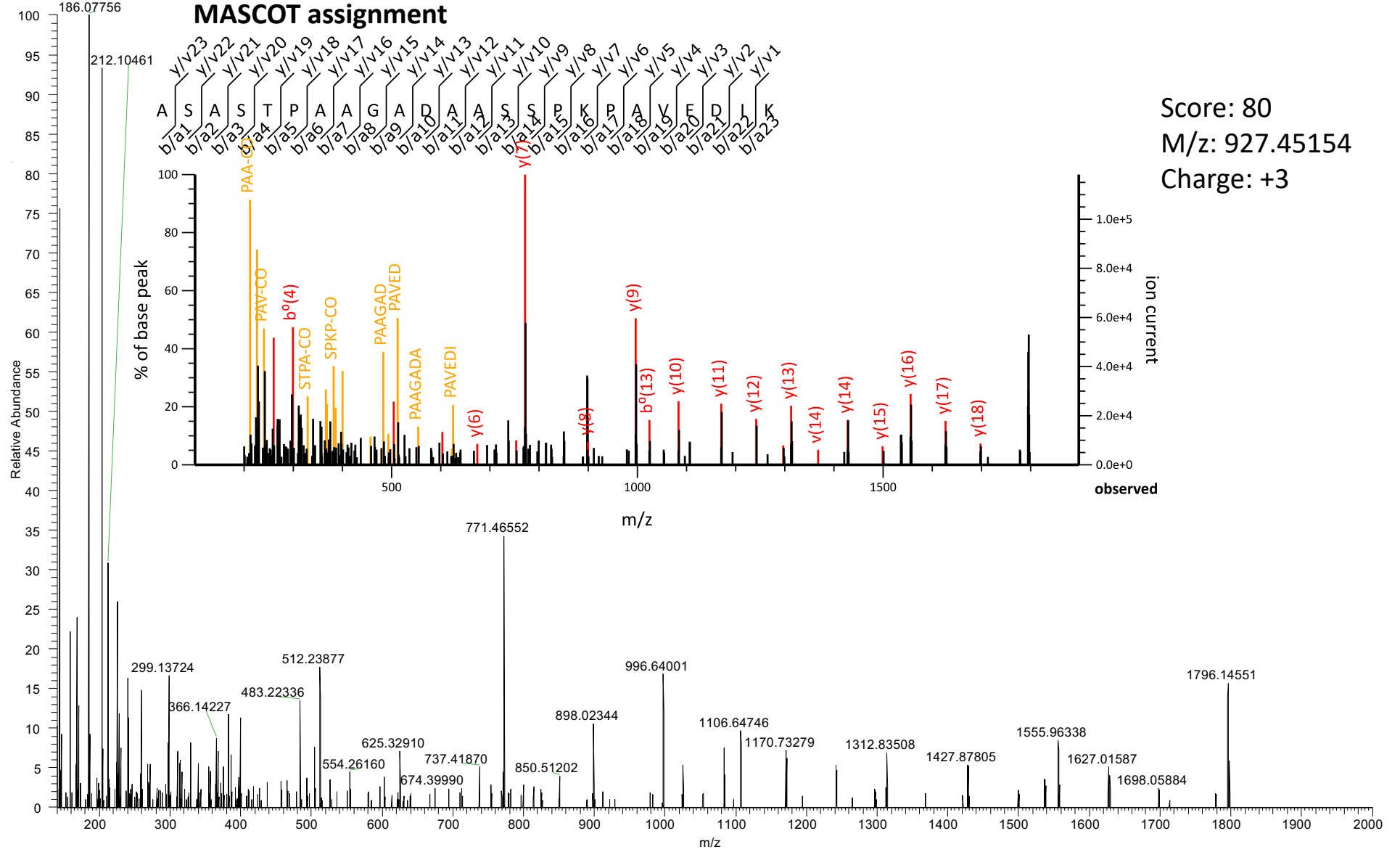
Score: 80

M/z: 927.45154

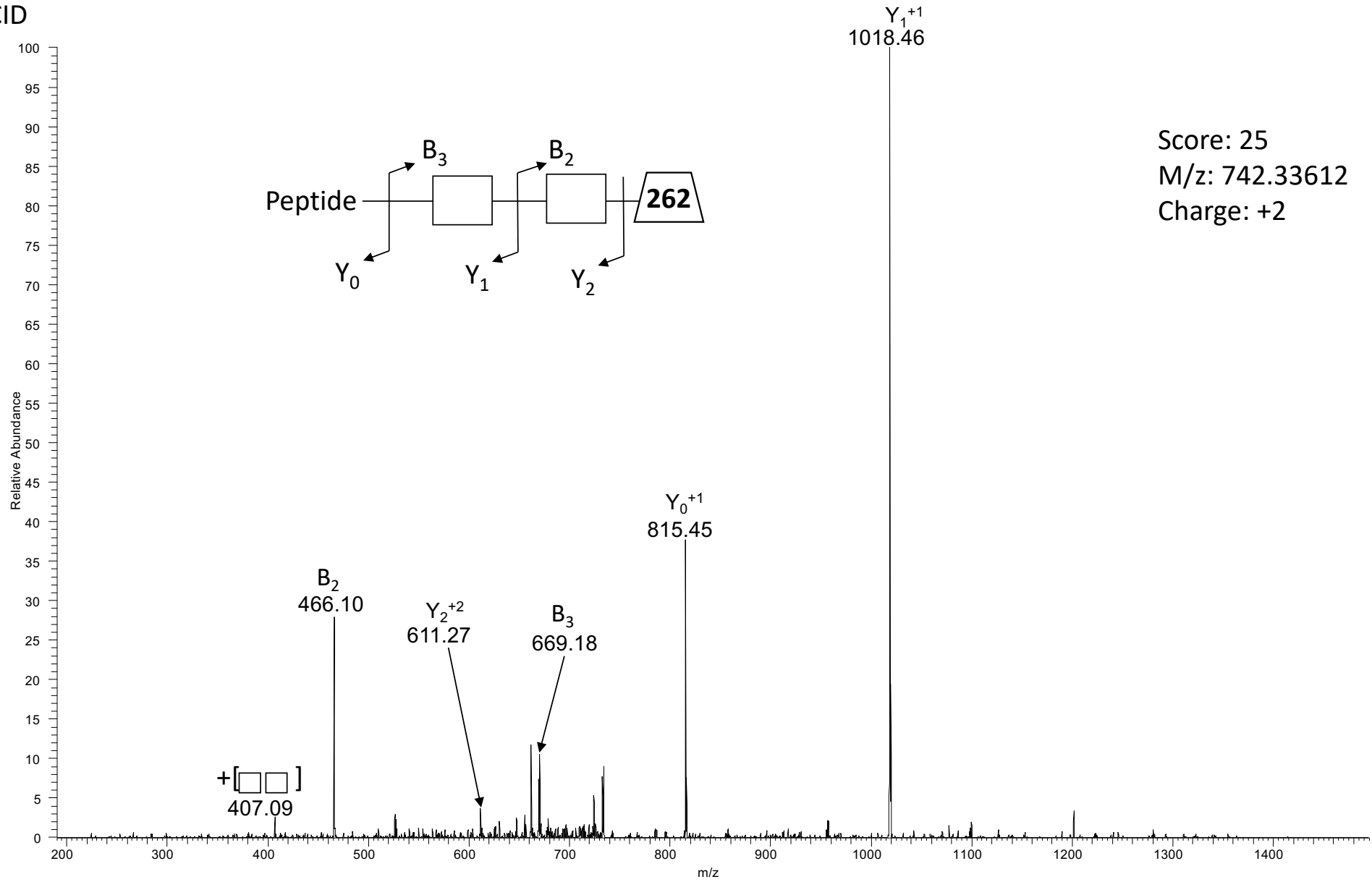
Charge: +3



FTMS-HCD

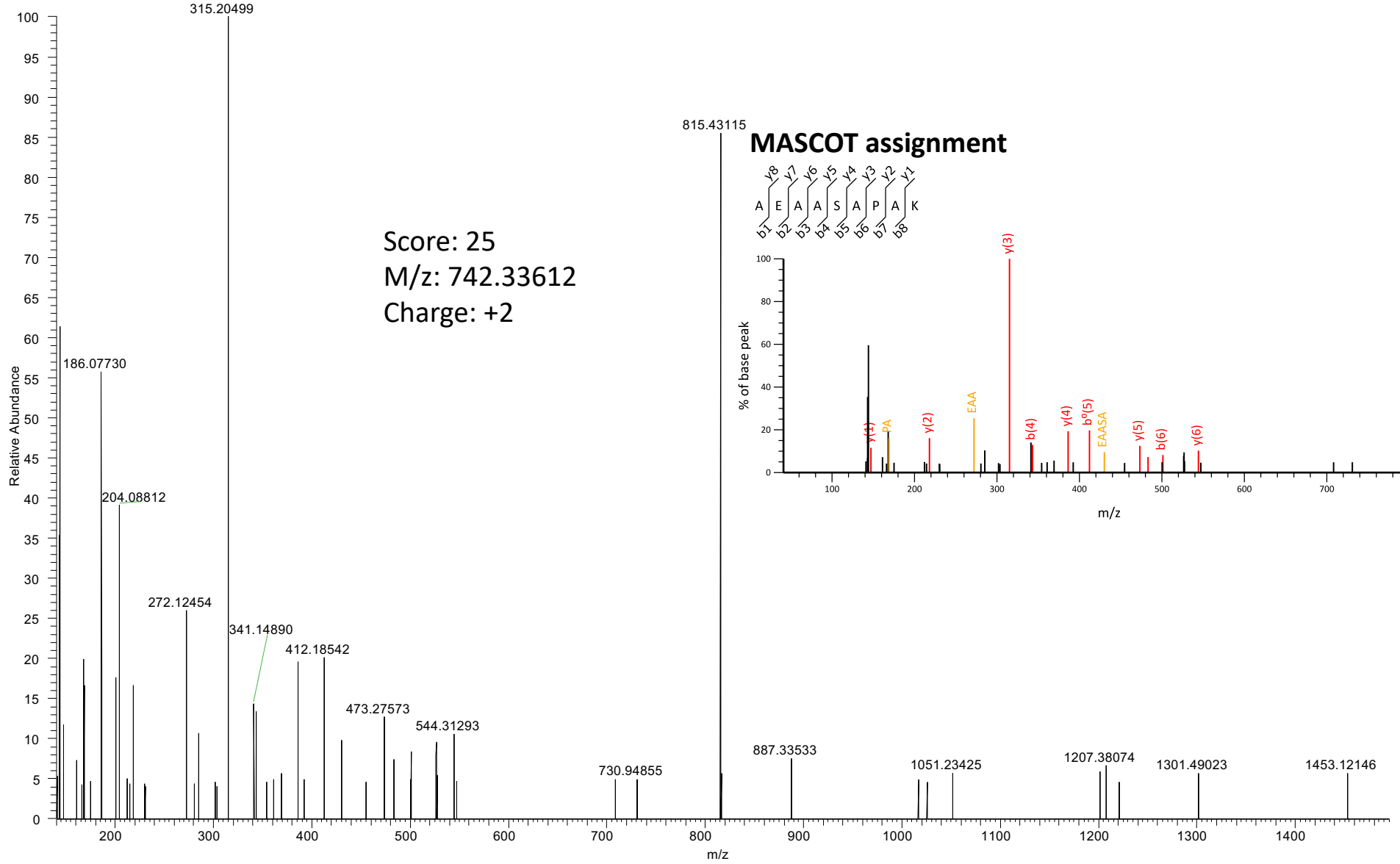


ITMS-CID



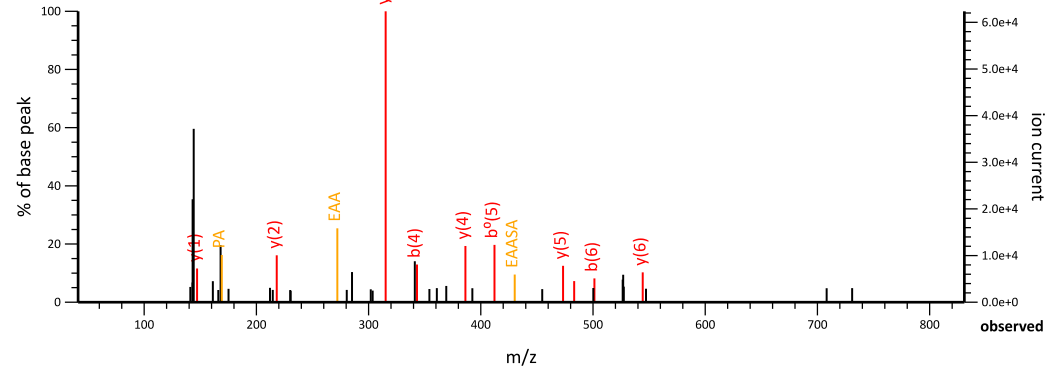
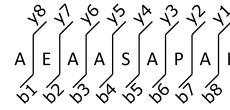
Score: 25  
M/z: 742.33612  
Charge: +2

FTMS-HCD

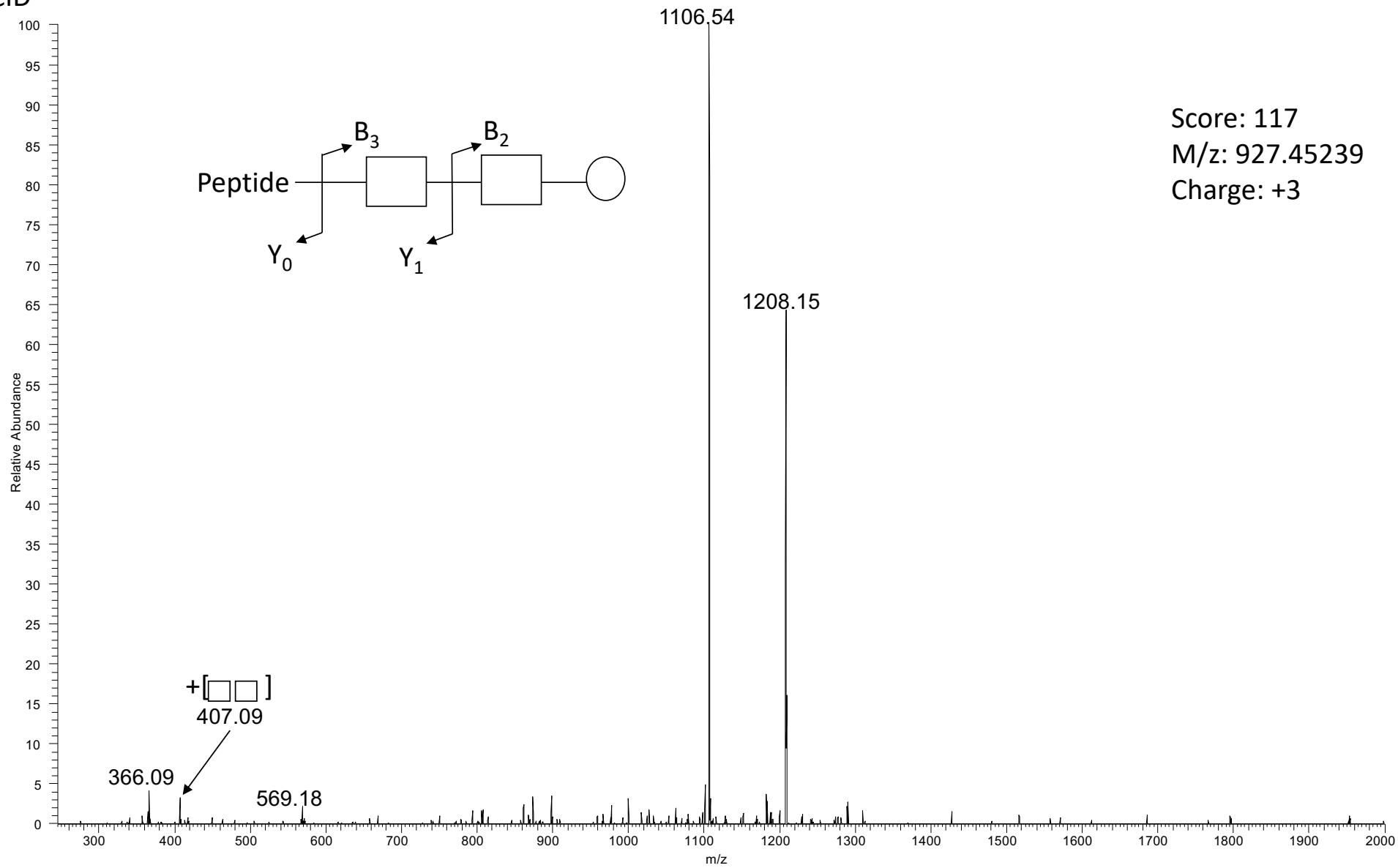


Score: 25  
M/z: 742.33612  
Charge: +2

MASCOT assignment



# ITMS-CID



Score: 117  
M/z: 927.45239  
Charge: +3

FTMS-HCD

