




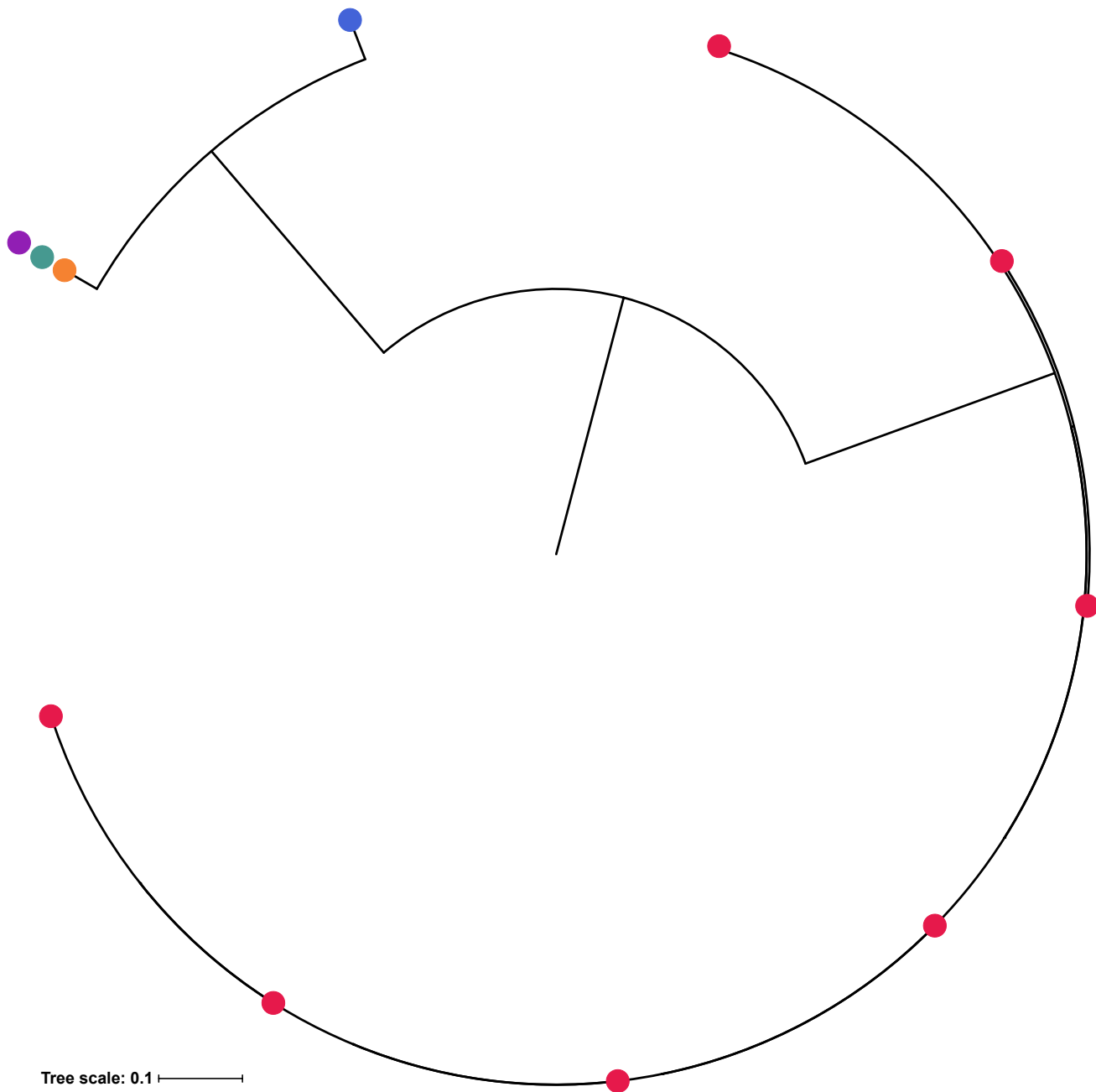
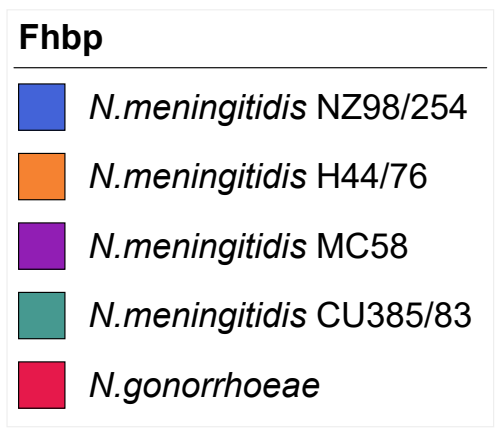
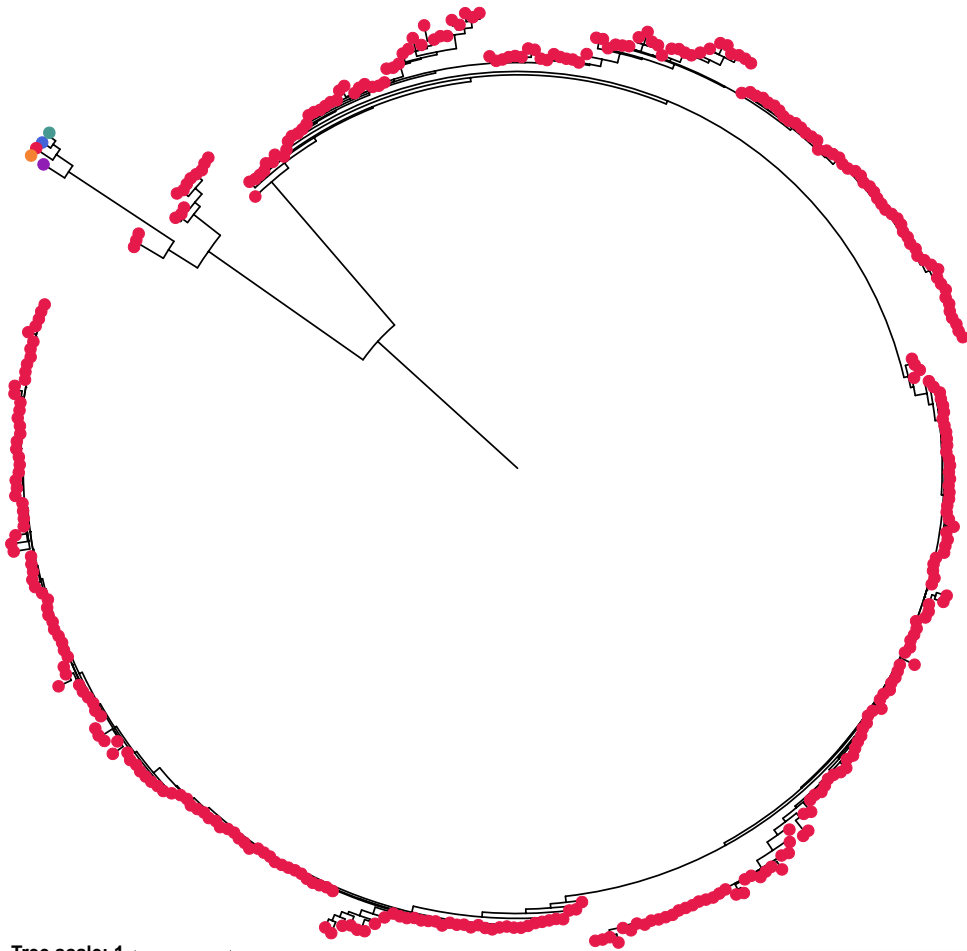


AniA	
	<i>N.meningitidis</i> NZ98/254
	<i>N.meningitidis</i> H44/76
	<i>N.meningitidis</i> MC58
	<i>N.meningitidis</i> CU385/83
	<i>N.gonorrhoeae</i>








Tree scale: 0.1

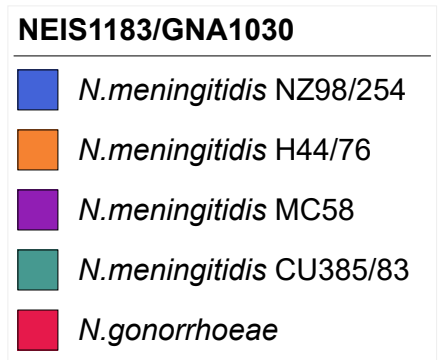
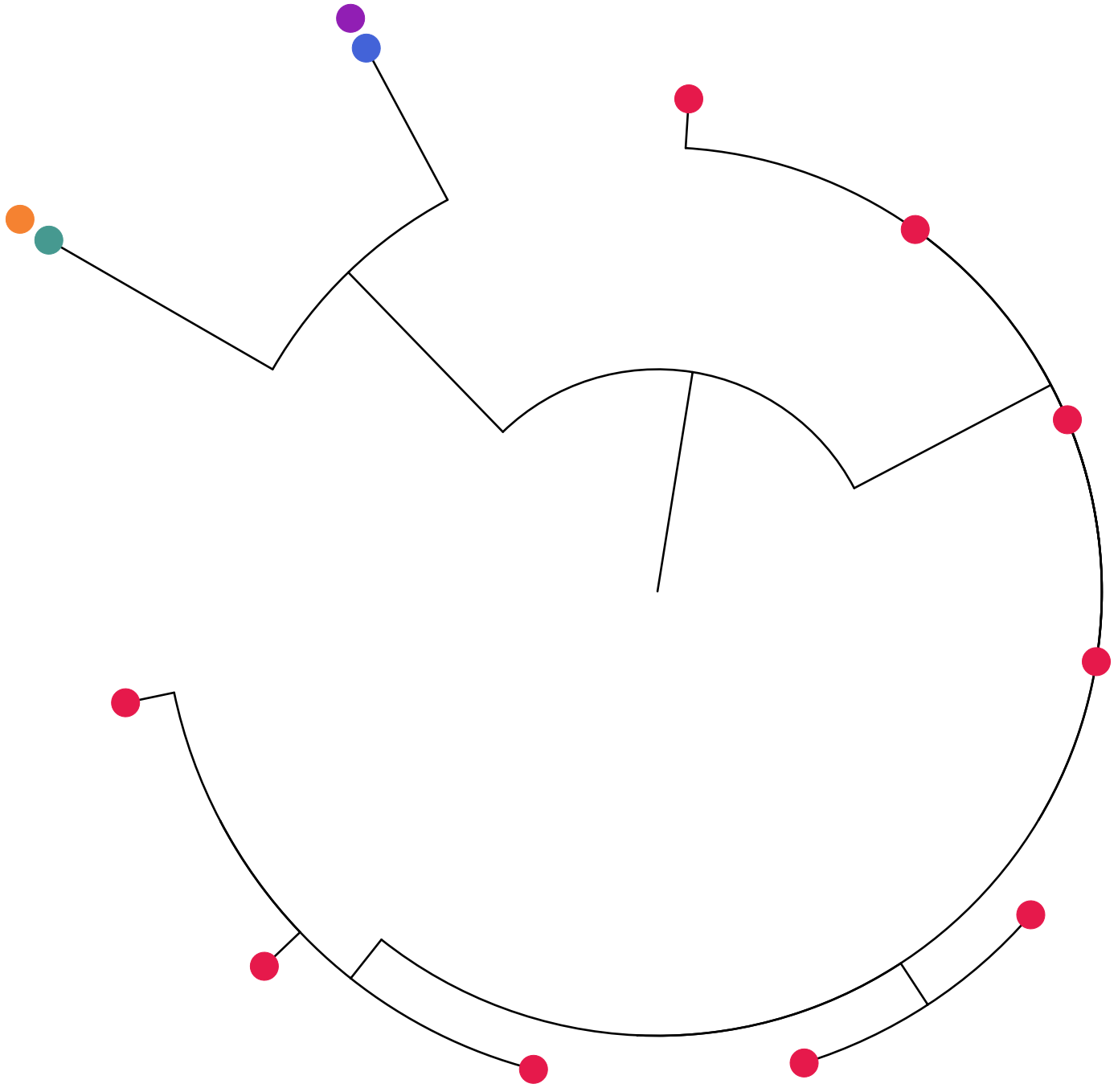




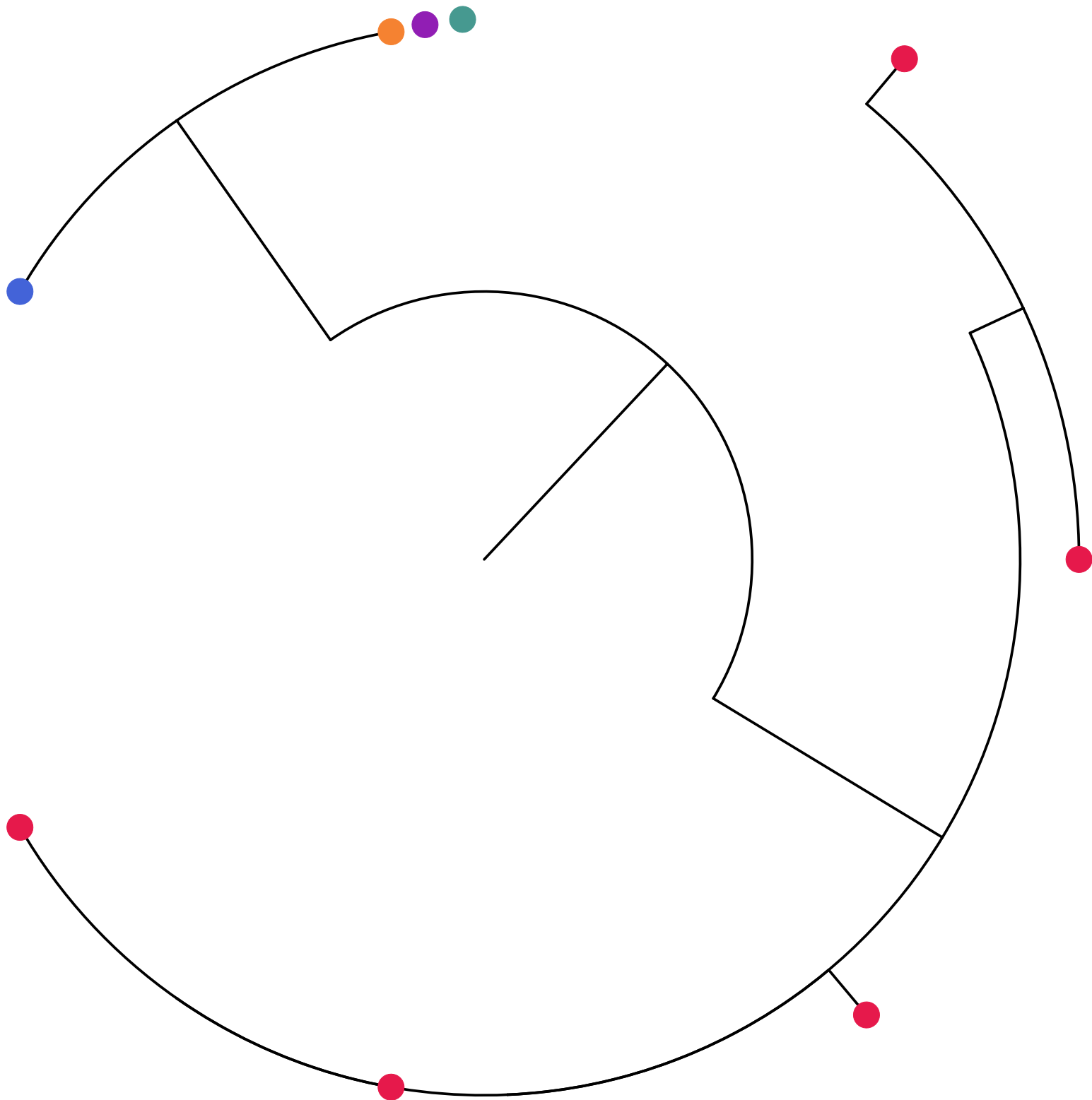
Tree scale: 1

### PorB

-  *N.meningitidis* NZ98/254
-  *N.meningitidis* H44/76
-  *N.meningitidis* MC58
-  *N.meningitidis* CU385/83
-  *N.gonorrhoeae*








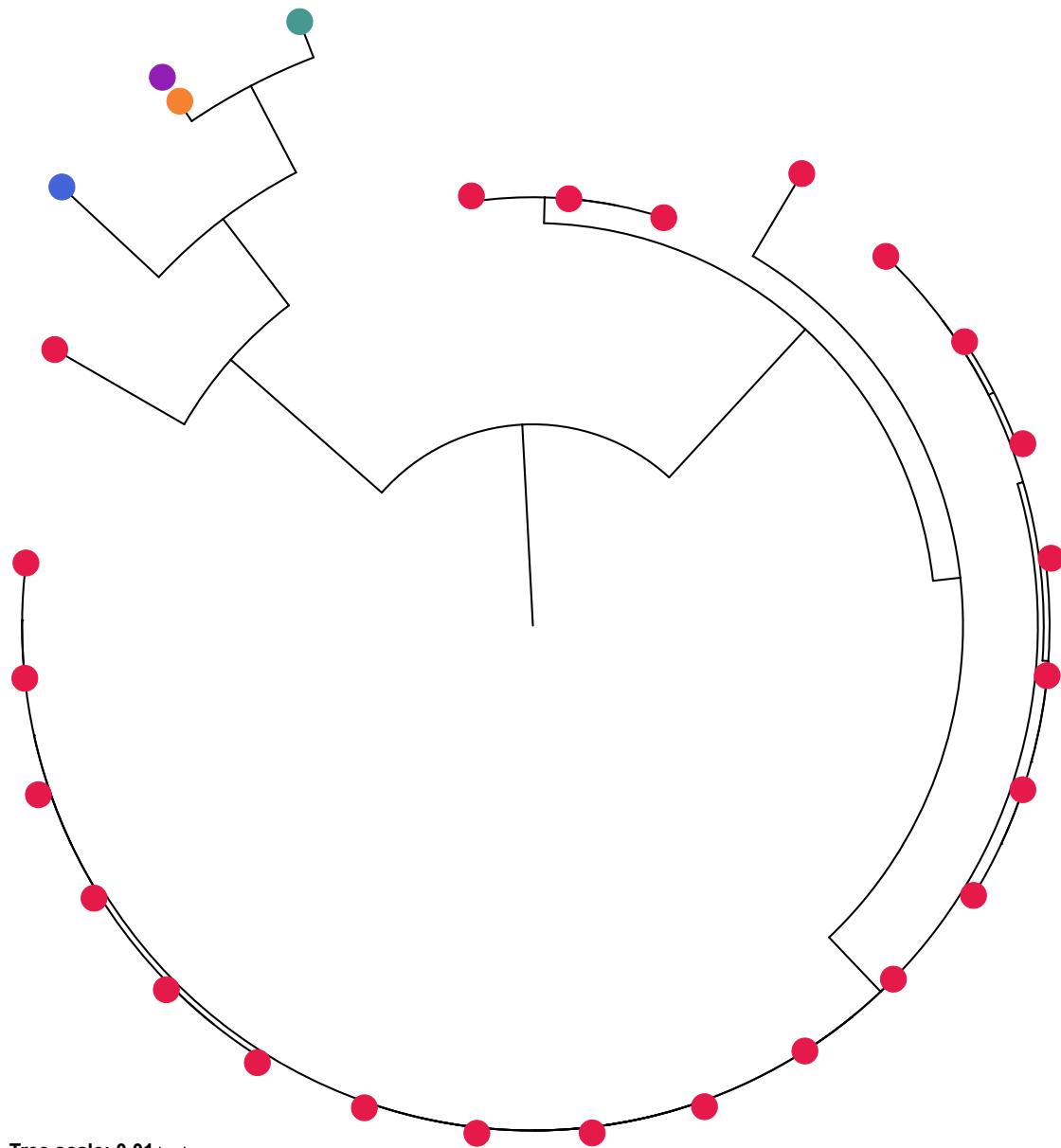
Tree scale: 0.01 



Tree scale: 0.01





**NEIS2071/GNA2091**

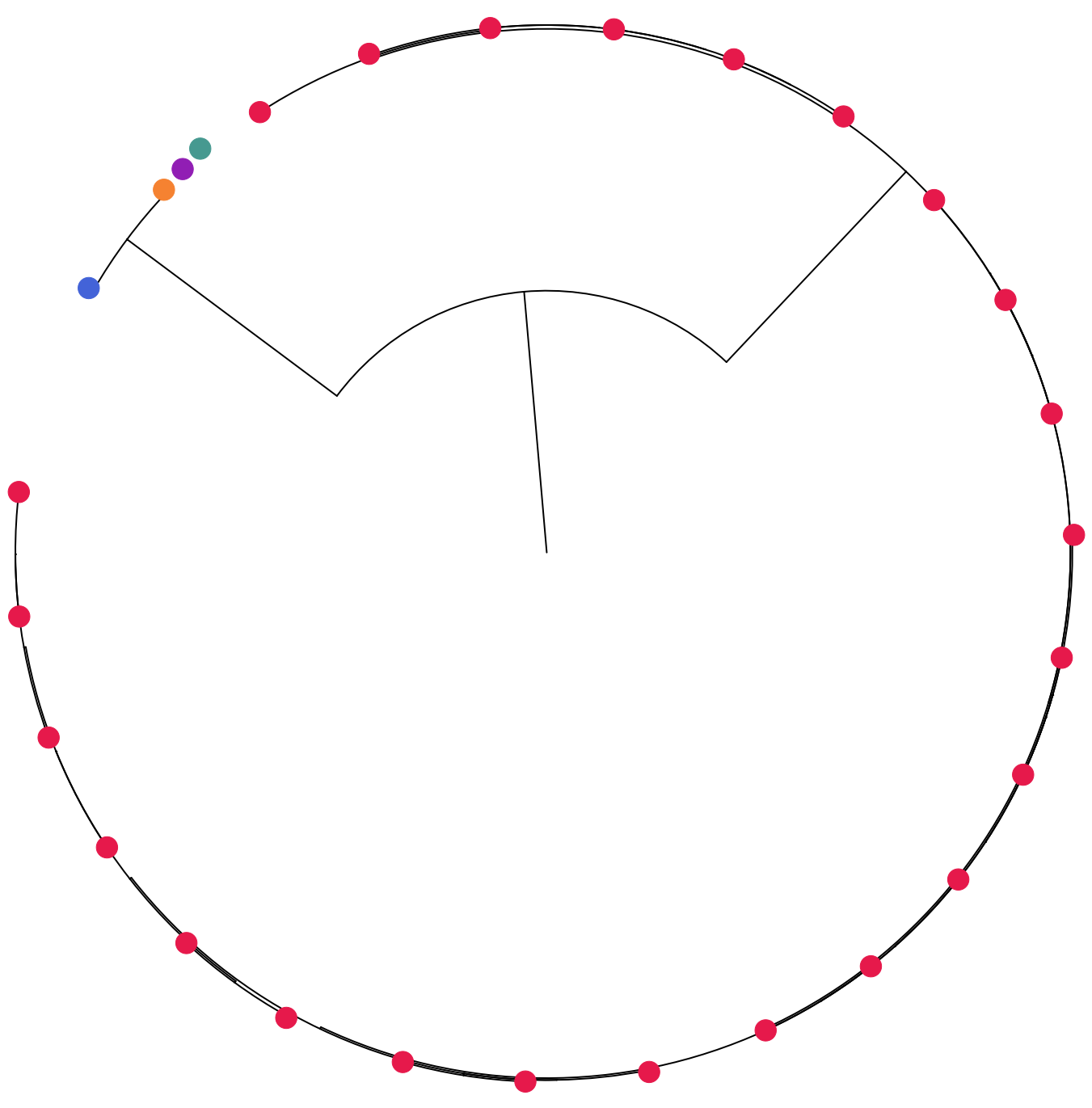
-  *N. meningitidis* NZ98/254
-  *N. meningitidis* H44/76
-  *N. meningitidis* MC58
-  *N. meningitidis* CU385/83
-  *N. gonorrhoeae*



Tree scale: 0.01






### NhbA

-  *N.meningitidis* NZ98/254
-  *N.meningitidis* H44/76
-  *N.meningitidis* MC58
-  *N.meningitidis* CU385/83
-  *N.gonorrhoeae*



Tree scale: 0.1

**OpcA**

	<i>N.meningitidis</i> NZ98/254
	<i>N.meningitidis</i> H44/76
	<i>N.meningitidis</i> MC58
	<i>N.meningitidis</i> CU385/83
	<i>N.gonorrhoeae</i>