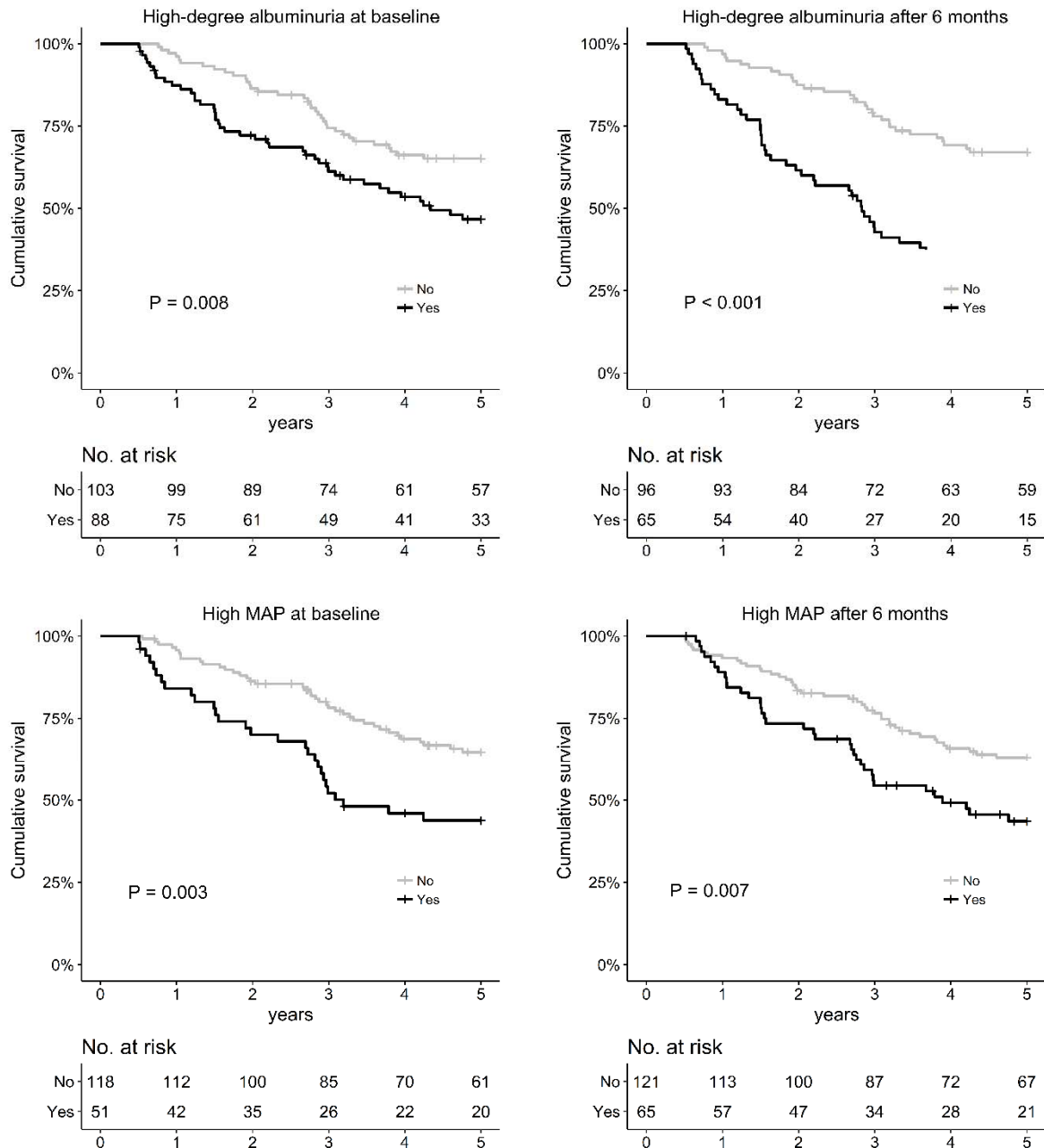


Figure S2. Presence of high-degree albuminuria ($\geq 2+$) or high MAP (> 100 mmHg) and their association with 5-year DCGF within patients those did not receive any antihypertensive agents.

DCGF of patients with anti-hypertensive medications



The variables at baseline and after 6 months from diagnosis are separately investigated. The x-axes indicate the years from allograft IgAN diagnosis and the y-axes indicate the cumulative survival.