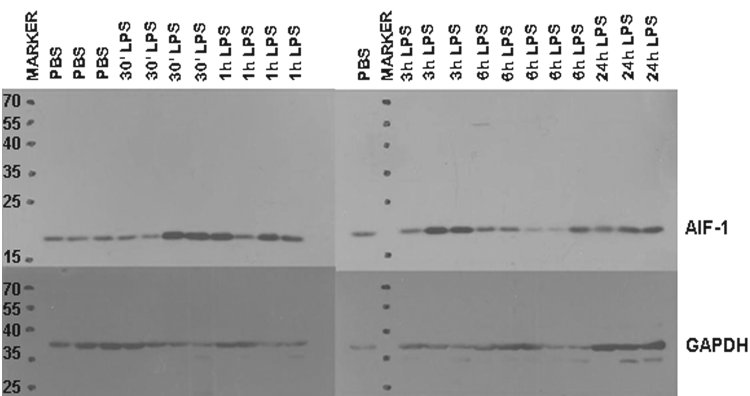


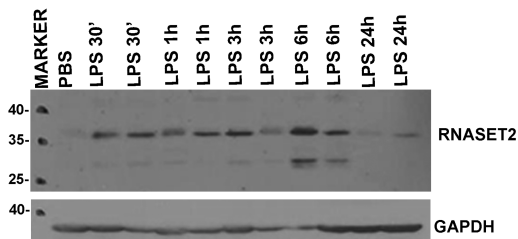
# AIF-1 and RNASET2 play complementary roles in the innate immune response of medicinal leech

Nicolò Baranzini<sup>1</sup>, Laura Monti<sup>1</sup>, Marta Vanotti<sup>1</sup>, Viviana T. Orlandi<sup>1</sup>, Fabrizio Bolognese<sup>1</sup>, Debora Scaldaferrì<sup>1</sup>, Rossana Girardello<sup>1</sup>, Gianluca Tettamanti<sup>1</sup>, Magda de Eguileor<sup>1</sup>, Jacopo Vizioli<sup>2</sup>, Roberto Taramelli<sup>1</sup>, Francesco Acquati<sup>1\*</sup>, Annalisa Grimaldi<sup>1\*</sup>

Full-length of AIF-1 (a) and RNASET2 (b) Western blot analysis shown in Figure 3.



**a**



**b**