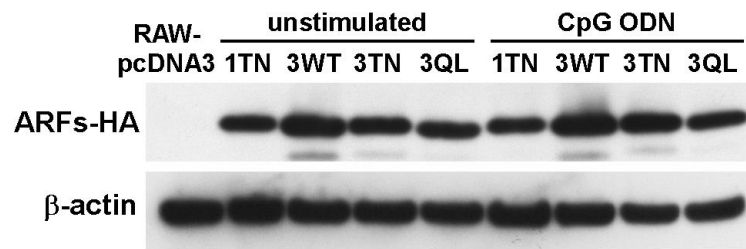
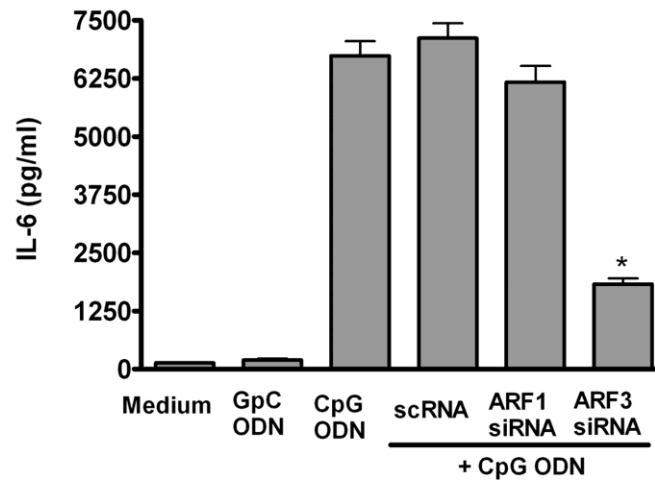


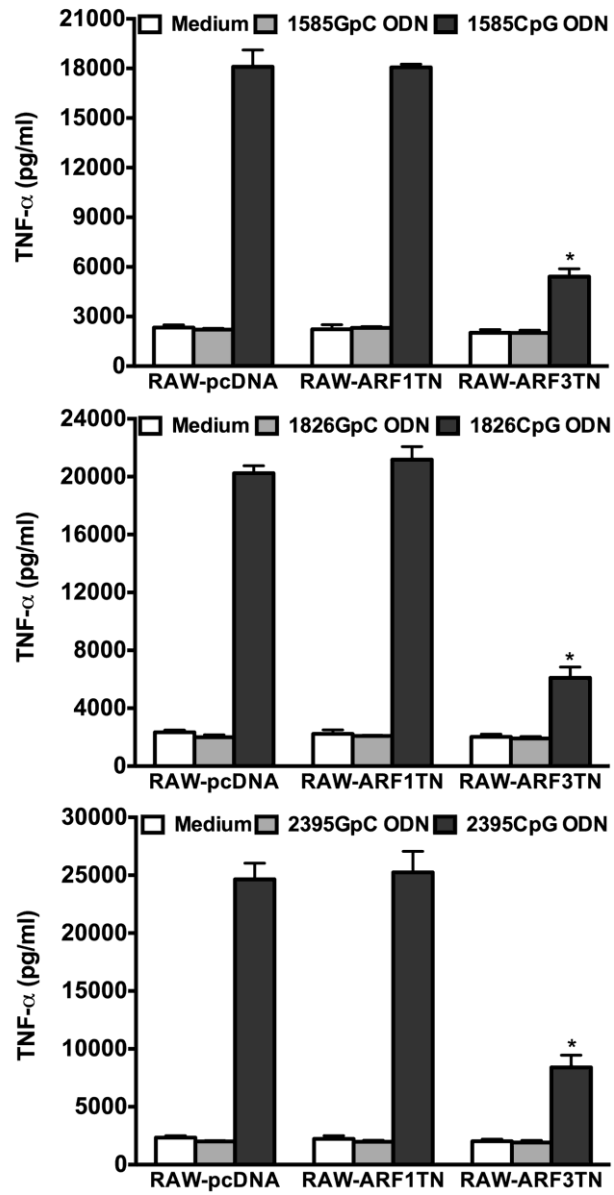
Supplementary Figure 1



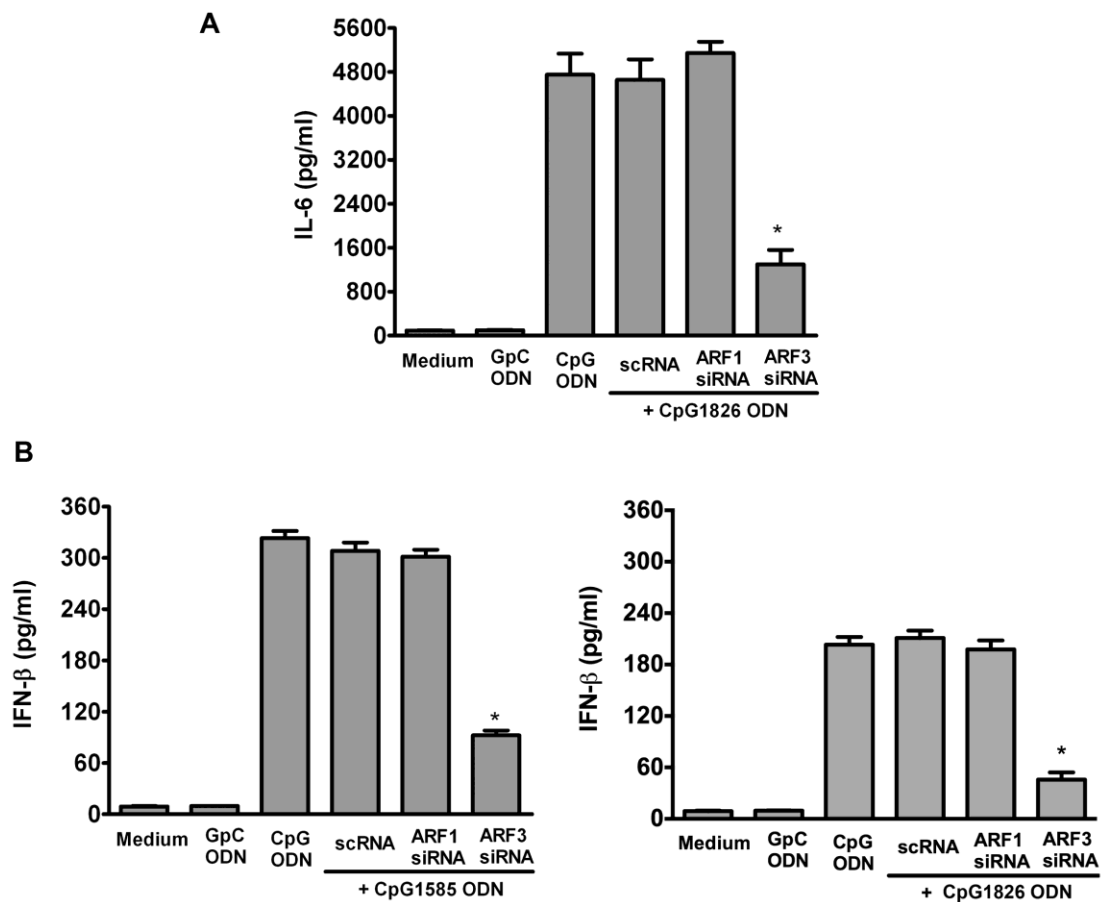
Supplementary Figure 2



Supplementary Figure 3



Supplementary Figure 4



Supplementary Figure Legends

Supplementary Fig. 1. The protein expression of ARF1 or ARF3 in their respective overexpression stable RAW264.7 cells. RAW-pcDNA, RAW-ARF1TN (1TN), RAW-ARF3 (3WT), RAW-ARF3TN (3TN), and RAW-ARF3OL (3QL) cells were treated with or without CpG1668 ODN (1.0 μ M) for 30 min. Cell lysates were immunoblotted with anti-HA antibodies.

Supplementary Fig.2. ARF3 is involved in CpG ODN-induced interleukin 6 (IL-6) production. Monocytes/macrophages were transfected with scramble siRNA, mouse ARF1 siRNA, or ARF3 siRNA for 48 h, and then underwent only the medium, GpC ODN, or CpG ODN stimulation for 20 h. The IL-6 levels in the culture supernatants were measured using ELISA. Data represent the mean \pm SD of 3 experiments. * $P < 0.001$ for ARF3 siRNA versus scRNA.

Supplementary Fig.3. Role of ARF3 in the three classes of CpG ODN-induced TNF- α production. RAW-pcDNA, RAW-ARF1T31N, and ARF3T31N cells were stimulated with only a medium, GpC1585 ODN, CpG1585 ODN, GpC1826 ODN, CpG1826 ODN, GpC2395 ODN or CpG2395 ODN for 20 h. The TNF- α levels in the culture supernatants were measured using ELISA. Data represent the mean \pm SD of 3 experiments. * $P < 0.001$ for ARF3 siRNA versus scRNA, or ARF3T31N versus RAW-pcDNA.

Supplementary Fig.4. Role of ARF3 in A- and B-Class CpG ODN-induced IL-6 and

IFN- β production. The pDCs were transfected with scramble siRNA, mouse ARF1 siRNA, or ARF3 siRNA for 48 h, and then were stimulated with medium, GpC1585 ODN, CpG1585 ODN, GpC1826 ODN, or CpG1826 ODN for 20 h. The IL-6 and IFN- β levels in the culture supernatants were measured using ELISA. Data represent the mean \pm SD of 3 experiments. * $P < 0.001$ for ARF3 siRNA versus scRNA, or ARF3T31N versus RAW-pcDNA.