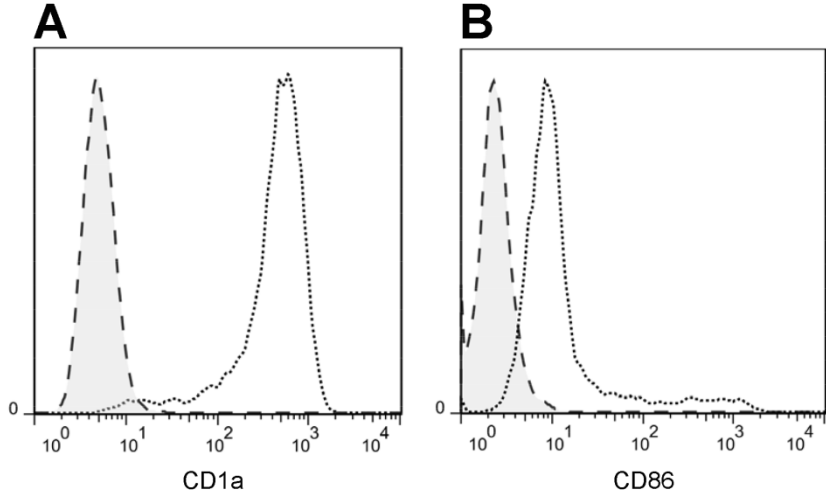


**Figure S2. Differentiation status of the dendritic cell population employed to evaluate the effects of NET**



Expression profiles of CD1a (A) and CD86 (B) determined by immunofluorescence and flow cytometry in monocyte derived dendritic cells after culture in the presence of GM-CSF and IL-4. Dotted histograms, marker expression; dashed tinted histograms, isotype controls.