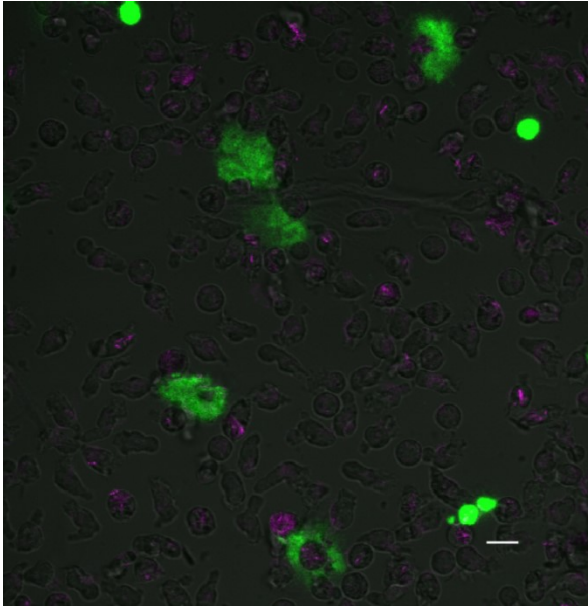


Figure S3. Reduced amounts of MSU crystals remained in neutrophil cultures after their removal. Crystals were identified mainly inside the cells.



Neutrophils (5×10^6 PMN/ml) were stimulated with MSU for 1h at 37°C. Then, after gentle pipetting, crystals were removed by centrifugation, and the cell pellets were suspended in fresh medium, seeded on poly-L-lysine-coated Cellview glass bottom dishes (Greiner Bio One) and immediately imaged by confocal microscopy in a chamber at 37°C under a humidified atmosphere with 5% CO₂. MSU crystals, revealed by reflection (magenta), were identified mainly inside neutrophils, which were unveiled by differential interface contrast (DIC). NET were revealed by the cell impermeable DNA dye Sytox Green (green). Scale bar: 10 μ m.