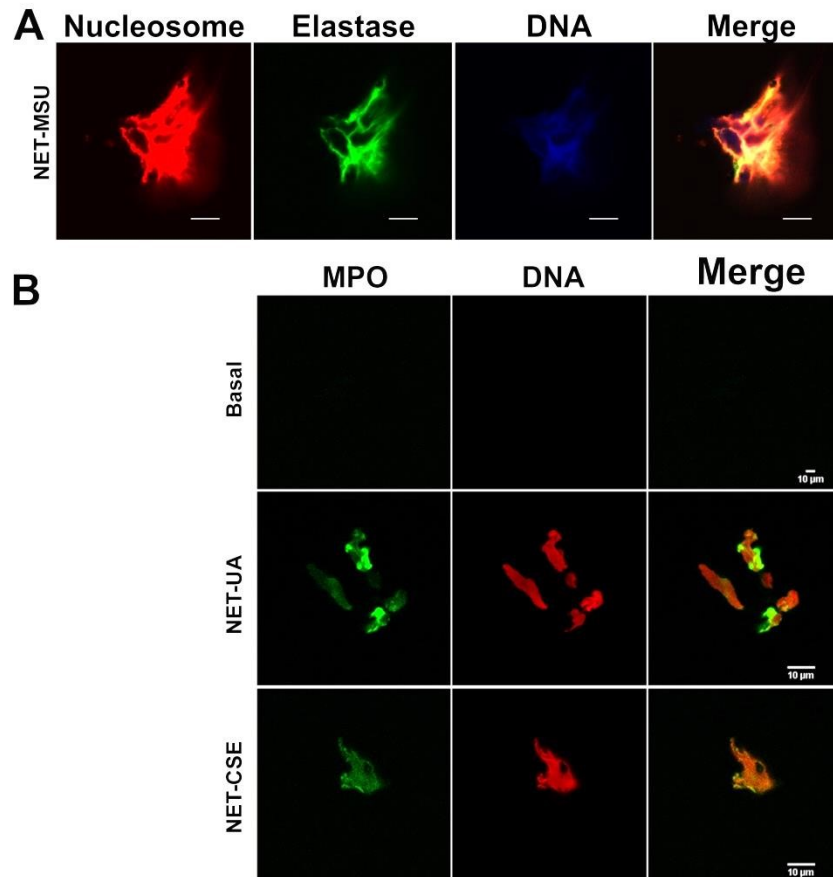


Figure S6. Identification of NET in the supernatants isolated from neutrophil cultures stimulated with MSU crystals, uric acid (UA) or cigarette smoke extract (CSE).



(A) Colocalization of elastase (green) and nucleosome (red) with DNA (TO-PRO-3; blue) or (B) colocalization of MPO (green) and DNA (PI; red), in the supernatant collected from neutrophils stimulated with MSU (A) or UA or CSE (B) following the protocol detailed in Methods. Supernatants were seeded onto poly-L-lysine-coated Lab-tek chambers coverslides. Images are representative of two experiments. Scale bars: 10 μ m.