

Supplementary Material

Population-based genome-wide association study of cognitive decline in older adults free of dementia: Identification of a novel locus for the attention domain

M. Ilyas Kamboh^{a,b,g*}, Kang-Hsien Fan^{a*}, Qi Yan^{c*}, Joanne C. Beer^{d*}, Xingbin Wang^a, F. Yesim Demirci^a, Beth E. Snitz^e, Chung-Chou H. Chang^{d,f}, Eleanor Feingold^{a,d}, Mary Ganguli^{b,e,g}

^a*Department of Human Genetics, Graduate School of Public Health, University of Pittsburgh, Pittsburgh, PA, USA*

^b*Department of Epidemiology, Graduate School of Public Health, University of Pittsburgh, Pittsburgh, PA, USA*

^c*Department of Pediatrics, School of Medicine, University of Pittsburgh, Pittsburgh, PA, USA*

^d*Department of Biostatistics, Graduate School of Public Health, University of Pittsburgh, Pittsburgh, PA, USA*

^e*Department of Neurology, School of Medicine, University of Pittsburgh, Pittsburgh, PA, USA*

^f*Department of Medicine, School of Medicine, University of Pittsburgh, Pittsburgh, PA, USA*

^g*Department of Psychiatry, School of Medicine, University of Pittsburgh, Pittsburgh, PA, USA*

*Contributed equally

Table S1. Association of *APOE**4 (rs429358) with Longitudinal Changes in all Cognitive Domains

	Meta		MyHAT		MoVIES	
<i>APOE</i> *4 Allele Frequency	10.13%		10.56%		9.26%	
Domains of decline	Beta	<i>P</i> -value	Beta	<i>P</i> -value	Beta	<i>P</i> -value
Attention/processing speed	-0.03	6.85E-01	-0.08	2.82E-01	0.09	4.07E-01
Executive function	-0.21	1.11E-03	-0.27	5.09E-04	-0.08	4.69E-01
Language	-0.24	1.65E-04	-0.30	8.52E-05	-0.11	3.37E-01
Memory	-0.29	7.18E-06	-0.28	2.91E-04	-0.30	8.05E-03
Visuospatial ability	-0.07	2.94E-01	-0.05	5.68E-01	-0.11	3.18E-01
Global cognition	-0.29	1.03E-05	-0.32	5.76E-05	-0.22	5.07E-02

Table S2.1. Association of Known AD Genes with Longitudinal Change in the Attention/Processing Speed Domain

AD gene region	Chr	Start bp	End bp	Total SNPs in region	# of SNPs <0.05	Top SNP in the region	Position	A1	A2	Beta	P-value
<i>CR1</i>	1	207669473	207815110	163	1	rs34720009	207755502	A	G	0.21	0.0116
<i>BIN1</i>	2	127805599	127864903	175	0	rs934826	127825968	A	G	-0.09	0.0704
<i>INPP5D</i>	2	233743396	234116549	922	32	rs4973585	233819091	T	C	-0.10	0.0096
<i>MEF2C</i>	5	87962671	88199922	162	0	rs11744850	88071933	G	C	0.08	0.0657
<i>HBEGF</i>	5	139712428	139726188	25	17	rs4150222	139719983	A	G	-0.21	0.0001
<i>HLA-DRB5/HLA-DRB1</i>	6	32260758	32827628	15080	282	rs28724893	32744440	T	C	-0.11	0.0058
<i>CD2AP</i>	6	47445525	47689757	601	1	rs28578494	47557301	T	C	-0.20	0.0189
<i>NME8</i>	7	37779996	37940002	398	8	chr7:37922209	37922209	A	G	-0.21	0.0194
<i>ZCWPW1</i>	7	99488030	100201661	760	9	rs73158413	99619540	A	T	0.15	0.0196
<i>EPHA1</i>	7	143013219	143220540	454	0	rs34824368	143087432	A	G	-0.09	0.0710
<i>PTK2B</i>	8	27093814	27402439	625	8	rs1879187	27193566	G	A	0.11	0.0418
<i>CLU</i>	8	27182996	27695349	1181	9	rs2640725	27413421	G	T	-0.10	0.0106
<i>ECHDC3</i>	10	11784356	11806065	54	0	rs71479374	11802364	A	G	0.12	0.1253
<i>CELF1</i>	11	47185849	47870057	825	36	rs11039155	47280762	A	G	-0.16	0.0073
<i>MS4A6A</i>	11	59807748	60108441	465	15	rs77984124	60052618	A	G	-0.23	0.0050
<i>PICALM</i>	11	85566144	85780139	369	9	rs11603990	85592421	C	A	0.11	0.0097
<i>SORL1</i>	11	121322912	121504471	191	1	rs58224948	121326693	T	C	-0.19	0.0101
<i>FERMT2</i>	14	53108605	53417815	396	1	rs35485994	53371779	T	C	0.17	0.0402
<i>SLC24A4</i>	14	92790152	93155334	1018	44	rs17783612	92919112	C	T	0.22	0.0018
<i>SCIMP</i>	17	5031687	5289132	508	0	rs2641257	5119918	G	A	-0.10	0.0593
<i>ABCA7</i>	19	840985	1301429	1130	62	rs35140707	1078297	T	C	-0.28	0.0005
<i>CASS4</i>	20	54967427	55111574	214	4	rs16979934	55026779	C	T	-0.18	0.0242

Table S2.2. Association of Known AD Genes with Longitudinal Change in the Executive Function Domain

AD gene region	Chr	Start bp	End bp	Total SNPs in region	# of SNPs <0.05	Top SNP in the region	Position	A1	A2	Beta	P-value
<i>CR1</i>	1	207669473	207815110	163	0	rs11118157	207778319	A	C	0.08	0.0818
<i>BIN1</i>	2	127805599	127864903	175	0	rs744368	127862653	T	G	0.07	0.1449
<i>INPP5D</i>	2	233743396	234116549	922	223	rs7569827	234107070	G	A	0.15	0.0004
<i>MEF2C</i>	5	87962671	88199922	162	45	rs62380364	88107337	A	C	-0.11	0.0052
<i>HBEGF</i>	5	139712428	139726188	25	1	rs11465446	139719135	G	A	-0.12	0.0450
<i>HLA-DRB5/HLA-DRB1</i>	6	32260758	32827628	15080	328	rs2859094	32700233	G	T	0.20	0.0012
<i>CD2AP</i>	6	47445525	47689757	601	0	rs12661844	47578974	T	C	0.08	0.0766
<i>NME8</i>	7	37779996	37940002	398	1	rs2598075	37872769	T	C	0.08	0.0454
<i>ZCWPW1</i>	7	99488030	100201661	760	155	rs11558475	99654600	G	A	-0.15	0.0006
<i>EPHA1</i>	7	143013219	143220540	454	35	rs1880559	143198796	C	A	0.17	0.0027
<i>PTK2B</i>	8	27093814	27402439	625	59	rs2278319	27308961	T	C	-0.13	0.0034
<i>CLU</i>	8	27182996	27695349	1181	61	rs2278319	27308961	T	C	-0.13	0.0034
<i>ECHDC3</i>	10	11784356	11806065	54	0	rs11257307	11800429	G	A	-0.11	0.0829
<i>CELF1</i>	11	47185849	47870057	825	3	chr11:4731485 5	47314855	T	C	0.20	0.0217
<i>MS4A6A</i>	11	59807748	60108441	465	2	rs1286275	59817496	G	A	0.10	0.0464
<i>PICALM</i>	11	85566144	85780139	369	9	rs80103299	85646050	A	G	-0.19	0.0140
<i>SORL1</i>	11	121322912	121504471	191	6	rs7118902	121440231	A	G	-0.09	0.0386
<i>FERMT2</i>	14	53108605	53417815	396	15	rs62005431	53175731	G	A	0.23	0.0094
<i>SLC24A4</i>	14	92790152	93155334	1018	18	rs79363863	92792604	T	C	-0.17	0.0098
<i>SCIMP</i>	17	5031687	5289132	508	22	rs16954575	5283239	C	T	0.19	0.0059
<i>ABCA7</i>	19	840985	1301429	1130	61	rs72618592	1226901	T	G	0.19	0.0003
<i>CASS4</i>	20	54967427	55111574	214	8	rs6014718	54981233	A	G	-0.12	0.0056

Table S2.3. Association of Known AD Genes with Longitudinal Change in the Language Domain

AD gene region	Chr	Start bp	End bp	Total SNPs in region	# of SNPs <0.05	Top SNP in the region	Position	A1	A2	Beta	<i>P</i> -value
<i>CR1</i>	1	207669473	207815110	163	15	rs146793221	207735980	T	A	0.10	0.0198
<i>BIN1</i>	2	127805599	127864903	175	22	rs1060743	127826533	G	A	-0.14	0.0015
<i>INPP5D</i>	2	233743396	234116549	922	30	rs6759973	234001575	T	C	0.23	0.0011
<i>MEF2C</i>	5	87962671	88199922	162	0	rs112862634	87970352	C	G	0.10	0.0686
<i>HBEGF</i>	5	139712428	139726188	25	3	rs4150231	139714947	T	C	0.19	0.0115
<i>HLA-DRB5/HLA-DRB1</i>	6	32260758	32827628	15080	418	rs181549666	32482352	A	T	-0.19	0.0004
<i>CD2AP</i>	6	47445525	47689757	601	36	rs58586595	47500713	T	G	0.11	0.0184
<i>NME8</i>	7	37779996	37940002	398	2	rs62463308	37794629	G	A	0.19	0.0276
<i>ZCWPW1</i>	7	99488030	100201661	760	201	rs55839153	99752566	A	G	-0.14	0.0045
<i>EPHA1</i>	7	143013219	143220540	454	59	rs73154208	143092664	G	C	0.17	0.0084
<i>PTK2B</i>	8	27093814	27402439	625	104	rs11994882	27261815	A	G	0.19	0.0035
<i>CLU</i>	8	27182996	27695349	1181	112	rs11994882	27261815	A	G	0.19	0.0035
<i>ECHDC3</i>	10	11784356	11806065	54	0	rs11558855	11784633	T	C	-0.04	0.4153
<i>CELF1</i>	11	47185849	47870057	825	21	rs2291120	47237680	C	T	0.16	0.0090
<i>MS4A6A</i>	11	59807748	60108441	465	25	rs76608006	60021586	A	C	-0.19	0.0311
<i>PICALM</i>	11	85566144	85780139	369	1	rs80103299	85646050	A	G	-0.16	0.0406
<i>SORL1</i>	11	121322912	121504471	191	0	rs10790448	121495555	A	G	-0.07	0.0684
<i>FERMT2</i>	14	53108605	53417815	396	27	rs12588928	53412752	A	G	0.13	0.0077
<i>SLC24A4</i>	14	92790152	93155334	1018	73	rs9323880	93129810	T	C	0.13	0.0016
<i>SCIMP</i>	17	5031687	5289132	508	1	rs6502859	5173631	A	G	-0.17	0.0469
<i>ABCA7</i>	19	840985	1301429	1130	45	rs2277746	1226772	T	C	0.19	0.0004
<i>CASS4</i>	20	54967427	55111574	214	0	rs911163	54985113	T	A	0.07	0.0565

Table S2.4. Association of Known AD Genes with Longitudinal Change in the Memory Domain

AD gene region	Chr	Start bp	End bp	Total SNPs in region	# of SNPs <0.05	Top SNP in the region	Position	A1	A2	Beta	P-value
<i>CR1</i>	1	207669473	207815110	163	13	rs12075933	207675853	G	T	0.17	0.0033
<i>BIN1</i>	2	127805599	127864903	175	0	rs72481904	127821499	C	T	-0.08	0.0524
<i>INPP5D</i>	2	233743396	234116549	922	19	rs12694918	233812632	C	T	-0.15	0.0076
<i>MEF2C</i>	5	87962671	88199922	162	0	rs76003436	88093272	C	T	-0.08	0.1190
<i>HBEGF</i>	5	139712428	139726188	25	2	rs113790245	139714984	G	A	0.21	0.0092
<i>HLA-DRB5/HLA-DRB1</i>	6	32260758	32827628	15080	169	rs115833135	32489672	A	C	-0.24	0.0012
<i>CD2AP</i>	6	47445525	47689757	601	4	rs4711889	47606576	C	T	-0.10	0.0293
<i>NME8</i>	7	37779996	37940002	398	23	rs79712423	37801841	G	A	-0.16	0.0030
<i>ZCWPW1</i>	7	99488030	100201661	760	71	rs113261079	99937803	G	A	-0.14	0.0061
<i>EPHA1</i>	7	143013219	143220540	454	89	rs1949849	143178774	G	A	-0.15	0.0005
<i>PTK2B</i>	8	27093814	27402439	625	123	rs2280375	27317337	A	G	0.20	0.0008
<i>CLU</i>	8	27182996	27695349	1181	139	rs2280375	27317337	A	G	0.20	0.0008
<i>ECHDC3</i>	10	11784356	11806065	54	0	rs11257300	11786415	G	A	0.12	0.0850
<i>CELF1</i>	11	47185849	47870057	825	1	rs11039155	47280762	A	G	-0.12	0.0478
<i>MS4A6A</i>	11	59807748	60108441	465	2	rs61900469	60084489	A	G	0.20	0.0147
<i>PICALM</i>	11	85566144	85780139	369	1	rs80103299	85646050	A	G	-0.18	0.0196
<i>SORL1</i>	11	121322912	121504471	191	20	rs11604897	121423552	T	C	0.17	0.0081
<i>FERMT2</i>	14	53108605	53417815	396	3	rs10151414	53165078	T	C	-0.11	0.0087
<i>SLC24A4</i>	14	92790152	93155334	1018	70	rs12590273	92934120	C	T	-0.21	0.0001
<i>SCIMP</i>	17	5031687	5289132	508	4	rs111783577	5144320	C	T	0.06	0.0249
<i>ABCA7</i>	19	840985	1301429	1130	115	rs7252771	1201393	A	G	0.15	0.0020
<i>CASS4</i>	20	54967427	55111574	214	5	rs16979884	54979035	A	G	-0.18	0.0089

Table S2.5. Association of Known AD Genes with Longitudinal Change in the Visuospatial Domain

AD gene region	Chr	Start bp	End bp	Total SNPs in region	# of SNPs <0.05	Top SNP in the region	Position	A1	A2	Beta	P-value
<i>CR1</i>	1	207669473	207815110	163	11	rs34720009	207755502	A	G	-0.27	0.0014
<i>BIN1</i>	2	127805599	127864903	175	0	rs4663091	127818781	G	C	0.10	0.1013
<i>INPP5D</i>	2	233743396	234116549	922	37	rs6759973	234001575	T	C	0.18	0.0137
<i>MEF2C</i>	5	87962671	88199922	162	13	rs165944	88110363	C	T	0.15	0.0016
<i>HBEGF</i>	5	139712428	139726188	25	0	rs1042184	139725961	A	G	0.14	0.0750
<i>HLA-DRB5/HLA-DRB1</i>	6	32260758	32827628	15080	54	rs41270899	32629450	G	A	0.16	0.0110
<i>CD2AP</i>	6	47445525	47689757	601	413	rs13196954	47611404	G	C	0.15	0.0010
<i>NME8</i>	7	37779996	37940002	398	9	rs62463308	37794629	G	A	0.20	0.0356
<i>ZCWPW1</i>	7	99488030	100201661	760	75	rs10255133	99982256	A	T	0.18	0.0018
<i>EPHA1</i>	7	143013219	143220540	454	86	rs2949762	143213351	A	G	-0.20	1.2E-05
<i>PTK2B</i>	8	27093814	27402439	625	92	rs17368415	27223682	A	G	-0.13	0.0021
<i>CLU</i>	8	27182996	27695349	1181	128	rs17368415	27223682	A	G	-0.13	0.0021
<i>ECHDC3</i>	10	11784356	11806065	54	0	rs11257300	11786415	G	A	0.12	0.0990
<i>CELF1</i>	11	47185849	47870057	825	6	rs6485761	47612949	C	T	-0.34	0.0012
<i>MS4A6A</i>	11	59807748	60108441	465	2	rs10897021	60044880	A	G	0.14	0.0252
<i>PICALM</i>	11	85566144	85780139	369	2	rs2942821	85697685	A	G	0.11	0.0245
<i>SORL1</i>	11	121322912	121504471	191	4	rs11822577	121402085	C	A	-0.13	0.0278
<i>FERMT2</i>	14	53108605	53417815	396	0	rs112898150	53140022	A	G	0.16	0.0586
<i>SLC24A4</i>	14	92790152	93155334	1018	42	rs71430763	92977621	A	G	0.27	0.0003
<i>SCIMP</i>	17	5031687	5289132	508	7	rs3026101	5280440	C	T	0.10	0.0274
<i>ABCA7</i>	19	840985	1301429	1130	144	rs3826957	1118774	C	G	-0.14	0.0007
<i>CASS4</i>	20	54967427	55111574	214	28	rs34552628	55070268	T	A	-0.10	0.0151

Table S2.6. Association of Known AD Genes with Longitudinal Change in Global Cognition

AD gene region	Chr	Start bp	End bp	Total SNPs in region	# of SNPs <0.05	Top SNP in the region	Position	A1	A2	Beta	P-value
<i>CR1</i>	1	207669473	207815110	163	0	rs148143690	207716188	G	T	0.09	0.0561
<i>BIN1</i>	2	127805599	127864903	175	0	rs1060743	127826533	G	A	-0.08	0.0547
<i>INPP5D</i>	2	233743396	234116549	922	130	rs10179304	234082911	A	T	-0.14	0.0060
<i>MEF2C</i>	5	87962671	88199922	162	0	chr5:87969929	87969929	A	T	0.09	0.0967
<i>HBEGF</i>	5	139712428	139726188	25	18	rs4150222	139719983	A	G	-0.17	0.0027
<i>HLA-DRB5/HLA-DRB1</i>	6	32260758	32827628	15080	443	rs181549666	32482352	A	T	-0.21	0.0003
<i>CD2AP</i>	6	47445525	47689757	601	7	rs9473147	47609592	G	A	-0.10	0.0379
<i>NME8</i>	7	37779996	37940002	398	12	rs2718042	37786514	A	G	-0.12	0.0270
<i>ZCWPW1</i>	7	99488030	100201661	760	146	rs147248866	99897475	T	C	-0.15	0.0044
<i>EPHA1</i>	7	143013219	143220540	454	89	rs1949849	143178774	G	A	-0.14	0.0015
<i>PTK2B</i>	8	27093814	27402439	625	179	rs4733063	27302885	G	A	-0.14	0.0009
<i>CLU</i>	8	27182996	27695349	1181	186	rs4733063	27302885	G	A	-0.14	0.0009
<i>ECHDC3</i>	10	11784356	11806065	54	0	rs12573515	11790453	G	A	0.06	0.1531
<i>CELF1</i>	11	47185849	47870057	825	33	rs11039155	47280762	A	G	-0.14	0.0225
<i>MS4A6A</i>	11	59807748	60108441	465	13	rs76676346	60013547	A	G	-0.21	0.0168
<i>PICALM</i>	11	85566144	85780139	369	7	rs80103299	85646050	A	G	-0.19	0.0134
<i>SORL1</i>	11	121322912	121504471	191	2	rs3781824	121325062	C	T	0.13	0.0436
<i>FERMT2</i>	14	53108605	53417815	396	7	rs4901313	53387109	T	G	0.12	0.0305
<i>SLC24A4</i>	14	92790152	93155334	1018	49	rs12590273	92934120	C	T	-0.18	0.0009
<i>SCIMP</i>	17	5031687	5289132	508	0	rs72634030	5272580	A	C	-0.15	0.0721
<i>ABCA7</i>	19	840985	1301429	1130	88	rs72618592	1226901	T	G	0.20	0.0002
<i>CASS4</i>	20	54967427	55111574	214	4	rs16979884	54979035	A	G	-0.18	0.0096

Table S3.1. Top SNPs ($P < 1E-05$) for Longitudinal Change in the Attention/Processing Speed Domain

SNP	CHR	BP	A1	A2	Region	GENE	MAF Meta	BETA Meta	P-value Meta	P-value Global
rs17532412	13	52308103	A	C	intronic	WDFY2	0.17	0.28	3.37E-08	4.04E-04
rs9535744	13	52311481	C	G	intronic	WDFY2	0.17	0.28	3.37E-08	4.04E-04
rs9535749	13	52328844	A	T	intronic	WDFY2	0.17	0.28	3.37E-08	4.04E-04
*rs9535753	13	52335201	C	T	UTR3	WDFY2	0.17	0.28	3.37E-08	4.04E-04
rs17532524	13	52316599	A	G	intronic	WDFY2	0.17	0.28	4.78E-08	4.82E-04
rs17532936	13	52332745	G	A	intronic	WDFY2	0.17	0.28	4.78E-08	4.82E-04
*rs2296029	13	52335765	T	C	UTR3	WDFY2	0.17	0.28	4.78E-08	4.82E-04
rs73199746	13	52323602	A	T	intronic	WDFY2	0.17	0.28	4.78E-08	4.82E-04
rs9526793	13	52327020	A	G	intronic	WDFY2	0.17	0.28	4.78E-08	4.82E-04
rs9526794	13	52330268	C	T	intronic	WDFY2	0.17	0.28	4.78E-08	4.82E-04
rs9535743	13	52309076	T	C	intronic	WDFY2	0.17	0.28	4.78E-08	4.82E-04
rs9535745	13	52312297	G	A	intronic	WDFY2	0.17	0.28	4.78E-08	4.82E-04
rs9535747	13	52322184	G	C	intronic	WDFY2	0.17	0.28	4.78E-08	4.82E-04
rs9535750	13	52330240	C	G	intronic	WDFY2	0.17	0.28	4.78E-08	4.82E-04
rs9535751	13	52333057	T	C	intronic	WDFY2	0.17	0.28	4.78E-08	4.82E-04
rs9535752	13	52333283	A	C	intronic	WDFY2	0.17	0.28	4.78E-08	4.82E-04
rs9535756	13	52339750	G	C	intergenic	WDFY2,DHRS12	0.17	0.28	4.78E-08	4.82E-04
rs60757273	13	52304837	G	T	intronic	WDFY2	0.17	0.28	5.20E-08	4.40E-04
rs73199734	13	52311956	C	T	intronic	WDFY2	0.17	0.28	5.24E-08	4.79E-04
rs12427748	13	52319940	C	T	intronic	WDFY2	0.17	0.28	6.41E-08	3.51E-04
rs9535755	13	52339143	G	C	intergenic	WDFY2,DHRS12	0.17	0.28	8.18E-08	6.43E-04
rs2296028	13	52345637	C	G	intronic	DHRS12	0.16	0.27	3.71E-07	7.57E-04
rs41292776	13	52343004	G	A	UTR3	DHRS12	0.17	0.37	3.87E-07	6.92E-02
rs77733744	13	52344004	A	G	intronic	DHRS12	0.16	0.26	5.47E-07	7.56E-04
rs1403649	3	20574235	C	T	intergenic	LOC101927829,VENTXP7	0.34	-0.21	8.72E-07	2.60E-03
rs17075907	13	52305464	C	T	intronic	WDFY2	0.16	0.26	9.43E-07	9.56E-04
rs9535746	13	52317358	G	A	intronic	WDFY2	0.16	0.26	9.43E-07	9.56E-04
rs9526786	13	52209422	G	A	intronic	WDFY2	0.18	0.24	9.82E-07	6.81E-03
rs17597531	13	52222222	T	C	intronic	WDFY2	0.18	0.24	9.99E-07	4.92E-03
rs9535739	13	52283300	T	C	intronic	WDFY2	0.18	0.24	9.99E-07	4.92E-03
rs9812215	3	20575322	C	T	intergenic	LOC101927829,VENTXP7	0.34	-0.21	1.00E-06	2.93E-03
rs9535734	13	52264383	G	A	intronic	WDFY2	0.18	0.24	1.04E-06	3.04E-03
rs9535737	13	52274944	G	A	intronic	WDFY2	0.18	0.24	1.04E-06	4.01E-03
rs9535738	13	52277693	T	G	intronic	WDFY2	0.18	0.24	1.04E-06	4.01E-03
rs9535741	13	52284123	G	A	intronic	WDFY2	0.18	0.24	1.04E-06	4.01E-03
rs1948903	3	20575110	T	C	intergenic	LOC101927829,VENTXP7	0.34	-0.21	1.04E-06	4.01E-03
rs147486058	9	27241050	T	A	intergenic	TEK,LINC00032	0.10	0.34	1.19E-06	1.53E-04
rs6550542	3	20574017	G	A	intergenic	LOC101927829,VENTXP7	0.34	-0.21	1.74E-06	3.83E-03
rs6808449	3	20575782	A	G	intergenic	LOC101927829,VENTXP7	0.34	-0.2	1.74E-06	2.26E-03

rs7648188	3	20573947	T	C	intergenic	LOC101927829,VENTXP7	0.34	-0.2	2.01E-06	4.90E-03
rs3908968	13	52180568	A	G	intronic	WDFY2	0.18	0.24	2.06E-06	6.20E-03
rs9535715	13	52178945	A	T	intronic	WDFY2	0.18	0.24	2.06E-06	6.20E-03
rs17597215	13	52188460	A	G	intronic	WDFY2	0.18	0.24	2.07E-06	7.77E-03
rs4555048	13	52185855	G	A	intronic	WDFY2	0.18	0.24	2.07E-06	7.77E-03
rs9526783	13	52192080	T	A	intronic	WDFY2	0.18	0.24	2.07E-06	7.77E-03
rs66671632	8	143680772	T	C	intergenic	BAI1,ARC	0.12	-0.28	2.48E-06	4.46E-02
rs7332702	13	101940643	C	T	intronic	NALCN	0.19	-0.24	2.65E-06	7.78E-03
rs9535714	13	52178166	C	G	intronic	WDFY2	0.18	0.23	4.29E-06	6.89E-03
rs658424	13	101769546	C	T	intronic	NALCN	0.14	-0.26	4.37E-06	1.39E-01
rs6089150	20	30615413	G	C	intronic	CCM2L	0.08	0.33	5.50E-06	1.05E-01
rs60320343	10	94537490	T	A	intergenic	HHEX,EXOC6	0.11	0.3	6.86E-06	1.50E-02
rs11606197	11	133051091	C	T	intronic	OPCML	0.16	0.25	6.91E-06	3.54E-01
rs182734936	2	174151807	T	C	intergenic	MLK7-AS1,CDCA7	0.07	0.38	7.25E-06	2.92E-05
rs9895932	17	48849957	T	C	intergenic	MIR8059,WFIKKN2	0.18	-0.23	7.31E-06	6.22E-01
rs6579316	20	30621098	A	G	intergenic	CCM2L,HCK	0.13	0.26	7.96E-06	3.87E-02
rs12211390	6	19702884	C	T	intergenic	LOC101928519,ID4	0.47	0.18	8.80E-06	4.41E-03
rs9535722	13	52207488	A	C	intronic	WDFY2	0.18	0.22	9.09E-06	1.03E-02
rs11714432	3	126929153	G	C	intergenic	C3orf56,LOC101927123	0.15	0.24	9.19E-06	8.37E-02
rs11716691	3	126931173	G	A	intergenic	C3orf56,LOC101927123	0.15	0.24	9.19E-06	8.37E-02
rs1471660	3	126930188	A	T	intergenic	C3orf56,LOC101927123	0.15	0.24	9.19E-06	8.37E-02
rs4679351	3	126933242	G	A	intergenic	C3orf56,LOC101927123	0.15	0.24	9.19E-06	8.37E-02
rs9872136	3	126932984	G	T	intergenic	C3orf56,LOC101927123	0.15	0.24	9.19E-06	8.40E-02
rs6809319	3	126935129	T	G	intergenic	C3orf56,LOC101927123	0.15	0.24	9.19E-06	8.37E-02
rs4296778	5	34528915	C	T	intergenic	C1QTNF3-AMACR,RAI14	0.35	-0.18	9.41E-06	1.97E-01
rs12146894	13	52326477	G	A	intronic	WDFY2	0.24	0.2	9.74E-06	8.85E-03
rs2897944	13	52329831	A	G	intronic	WDFY2	0.24	0.2	9.74E-06	8.85E-03
rs9535748	13	52328361	G	A	intronic	WDFY2	0.24	0.2	9.74E-06	8.85E-03
rs4234283	3	126935726	C	A	intergenic	C3orf56,LOC101927123	0.15	0.24	9.85E-06	7.47E-02
rs11714341	3	126929088	C	T	intergenic	C3orf56,LOC101927123	0.15	0.24	9.95E-06	8.37E-02
rs75570795	8	143659938	A	G	intergenic	BAI1,ARC	0.11	-0.28	9.99E-06	2.70E-02

* Bold font indicates genotyped SNPs with $P < 5E-08$

Table S3.2. Top SNPs ($P < 1E-05$) for Longitudinal Change in the Executive Function Domain

SNP	CHR	BP	A1	A2	Region	GENE	MAF Meta	BETA Meta	P-value Meta	P-value Global
rs10107150	8	84000400	A	T	intergenic	SNX16,LINC01419	0.55	0.18	1.92E-06	4.02E-04
chr:8:27776200	8	27776200	C	G	intronic	SCARA5	0.48	0.24	2.21E-06	1.71E-04
rs2546753	5	173204298	A	G	intergenic	LOC101928136,LOC101928154	0.27	-0.21	2.85E-06	3.84E-04
rs6545794	2	60484909	A	G	intergenic	LOC101927285,MIR4432	0.08	-0.33	2.89E-06	2.51E-02
rs17017706	2	60487902	T	G	intergenic	LOC101927285,MIR4432	0.08	-0.33	3.54E-06	4.92E-02
rs12428019	13	43369700	A	T	intergenic	FAM216B,EPSTI1	0.25	-0.28	3.63E-06	5.13E-04
rs12428973	13	43369701	T	A	intergenic	FAM216B,EPSTI1	0.25	-0.28	3.63E-06	5.13E-04
rs111911665	2	60493335	A	G	intergenic	LOC101927285,MIR4432	0.08	-0.33	4.35E-06	2.88E-02
rs10004897	4	84312759	A	G	intergenic	HPSE,HELQ	0.17	0.25	4.36E-06	6.32E-03
rs13104478	4	84301323	A	G	intergenic	HPSE,HELQ	0.18	0.24	4.37E-06	2.30E-02
rs34393106	4	4088636	A	C	intergenic	FAM86EP,OTOP1	0.58	0.28	4.41E-06	1.53E-03
rs6843371	4	84299447	G	A	intergenic	HPSE,HELQ	0.18	0.24	5.55E-06	2.85E-02
rs6818482	4	84308661	G	T	intergenic	HPSE,HELQ	0.18	0.24	5.65E-06	3.50E-02
rs12237894	9	74299640	C	G	UTR3	TMEM2	0.12	0.28	5.73E-06	9.81E-03
rs72960925	2	60502433	T	C	intergenic	LOC101927285,MIR4432	0.08	-0.32	5.75E-06	2.27E-02
rs907574	2	60503230	A	G	intergenic	LOC101927285,MIR4432	0.08	-0.32	5.75E-06	2.27E-02
rs11943334	4	84308183	G	A	intergenic	HPSE,HELQ	0.18	0.24	5.77E-06	3.57E-02
rs4079618	2	60504816	C	G	intergenic	LOC101927285,MIR4432	0.08	-0.32	6.61E-06	2.99E-02
rs58593843	2	60499463	A	G	intergenic	LOC101927285,MIR4432	0.08	-0.32	6.68E-06	2.75E-02
rs6822815	4	84307262	C	G	intergenic	HPSE,HELQ	0.18	0.24	6.83E-06	4.17E-02
rs4693618	4	84297853	G	A	intergenic	HPSE,HELQ	0.18	0.24	6.91E-06	2.96E-02
rs6831180	4	84304734	T	C	intergenic	HPSE,HELQ	0.18	0.23	7.28E-06	3.46E-02
rs6558570	8	1932654	T	C	intronic	KBTBD11	0.43	0.19	8.88E-06	2.73E-05
rs10869051	9	74294497	C	G	intergenic	TRPM3,TMEM2	0.13	0.26	9.59E-06	2.31E-02
rs9526788	13	52263834	G	A	intronic	WDFY2	0.18	0.23	9.60E-06	7.26E-03
rs4921111	5	159609114	A	T	intergenic	PWWP2A,FABP6	0.55	0.17	9.75E-06	9.21E-04

Table S3.3. Top SNPs ($P < 1E-05$) for Longitudinal Change in the Language Domain

SNP	CHR	BP	A1	A2	Region	GENE	MAF Meta	BETA Meta	P-value Meta	P-value Global
rs13013766	2	218829527	C	G	intergenic	TNS1,CXCR2P1	0.11	-0.37	1.65E-07	1.07E-04
rs202024188	3	36128605	C	G	intergenic	ARPP21,STAC	0.28	-0.24	2.83E-07	1.49E-05
rs147655505	3	36125614	A	G	intergenic	ARPP21,STAC	0.36	-0.21	5.33E-07	2.68E-05
rs141005242	4	122608258	T	C	intronic	ANXA5	0.08	0.38	5.40E-07	5.26E-03
rs13071179	3	36137161	G	C	intergenic	ARPP21,STAC	0.36	-0.21	5.47E-07	2.34E-05
rs34165897	3	36136938	G	A	intergenic	ARPP21,STAC	0.36	-0.21	5.47E-07	2.34E-05
rs145360217	3	36125613	C	T	intergenic	ARPP21,STAC	0.36	-0.21	5.64E-07	2.66E-05
rs11129687	3	36115732	C	G	intergenic	ARPP21,STAC	0.36	-0.21	5.87E-07	3.91E-05
rs189108597	3	36126700	C	A	intergenic	ARPP21,STAC	0.36	-0.21	5.89E-07	2.58E-05
rs4678833	3	36132630	G	A	intergenic	ARPP21,STAC	0.36	-0.21	5.89E-07	2.58E-05
rs77171313	3	36129256	G	A	intergenic	ARPP21,STAC	0.36	-0.21	5.89E-07	2.58E-05
rs78580948	3	36127467	T	C	intergenic	ARPP21,STAC	0.36	-0.21	5.89E-07	2.58E-05
rs10511179	3	100058466	G	C	intronic	NIT2	0.54	0.19	6.20E-07	7.91E-05
rs1901398	3	36114324	G	A	intergenic	ARPP21,STAC	0.36	-0.21	6.21E-07	4.16E-05
rs12492669	3	36135961	T	C	intergenic	ARPP21,STAC	0.36	-0.2	6.30E-07	2.78E-05
rs139027644	3	36128730	T	G	intergenic	ARPP21,STAC	0.36	-0.2	6.30E-07	2.78E-05
rs7227896	18	76535996	C	A	intergenic	LINC01029,SALL3	0.17	-0.27	6.68E-07	8.98E-04
rs11252279	10	4065810	C	G	intergenic	MIR6078,LOC101927964	0.53	0.19	6.84E-07	4.22E-06
rs36175598	3	36145915	C	T	intergenic	ARPP21,STAC	0.33	-0.22	7.19E-07	4.50E-05
rs78366579	3	36145920	G	T	intergenic	ARPP21,STAC	0.33	-0.22	7.19E-07	4.50E-05
rs13067614	3	36122348	C	T	intergenic	ARPP21,STAC	0.37	-0.2	7.83E-07	3.07E-05
rs11129692	3	36153431	T	C	intergenic	ARPP21,STAC	0.36	-0.2	8.70E-07	3.81E-05
rs13018687	2	218829678	A	G	intergenic	TNS1,CXCR2P1	0.11	-0.34	9.24E-07	2.49E-05
rs11129694	3	36154191	G	T	intergenic	ARPP21,STAC	0.36	-0.2	9.30E-07	4.10E-05
rs11717566	3	36134591	C	T	intergenic	ARPP21,STAC	0.36	-0.2	9.40E-07	2.90E-05
rs1925531	10	20915085	A	T	intergenic	MIR4675,NEBL	0.55	0.21	1.02E-06	7.40E-08
rs35534011	3	36159045	T	C	intergenic	ARPP21,STAC	0.36	-0.2	1.09E-06	4.42E-05
rs71614151	3	36141071	A	C	intergenic	ARPP21,STAC	0.36	-0.2	1.10E-06	1.14E-05
rs71614152	3	36141105	G	A	intergenic	ARPP21,STAC	0.36	-0.2	1.10E-06	1.14E-05
rs6877034	5	53702584	C	G	intergenic	ARL15,HSPB3	0.54	0.22	1.23E-06	7.72E-04
rs10978143	9	9971410	A	G	intronic	PTPRD	0.26	-0.22	1.36E-06	2.30E-04
rs35638311	2	218830685	A	G	intergenic	TNS1,CXCR2P1	0.10	-0.32	1.36E-06	1.58E-05
rs4678836	3	36138227	A	G	intergenic	ARPP21,STAC	0.37	-0.2	1.42E-06	4.74E-05
rs13076624	3	36158708	C	T	intergenic	ARPP21,STAC	0.37	-0.2	1.46E-06	5.88E-05
rs4678846	3	36158249	C	A	intergenic	ARPP21,STAC	0.37	-0.2	1.46E-06	5.88E-05
rs201998488	3	36129696	G	A	intergenic	ARPP21,STAC	0.35	-0.2	1.52E-06	1.07E-04
rs12638805	3	36170841	C	G	intergenic	ARPP21,STAC	0.36	-0.2	1.70E-06	5.11E-05
rs13088087	3	36139545	G	A	intergenic	ARPP21,STAC	0.37	-0.2	1.73E-06	5.47E-05
rs2382087	9	9960537	A	G	intronic	PTPRD	0.38	-0.19	1.74E-06	3.31E-03
rs13018351	2	218829609	A	C	intergenic	TNS1,CXCR2P1	0.11	-0.34	1.76E-06	2.41E-04

rs7234784	18	76535489	T	C	intergenic	LINC01029,SALL3	0.17	-0.26	1.77E-06	8.17E-04
rs7089445	10	30013103	T	G	intronic	SVIL	0.31	0.2	1.79E-06	3.88E-03
rs35195707	3	36170588	A	C	intergenic	ARPP21,STAC	0.36	-0.2	1.82E-06	5.48E-05
rs13058863	3	36172026	A	G	intergenic	ARPP21,STAC	0.36	-0.2	1.82E-06	5.76E-05
rs5012697	3	36179245	G	A	intergenic	ARPP21,STAC	0.36	-0.2	1.82E-06	5.76E-05
rs10510675	3	36148516	T	C	intergenic	ARPP21,STAC	0.37	-0.2	1.84E-06	6.04E-05
rs10510676	3	36148866	A	G	intergenic	ARPP21,STAC	0.37	-0.2	1.84E-06	6.04E-05
rs10780023	3	36152962	A	C	intergenic	ARPP21,STAC	0.37	-0.2	1.84E-06	6.04E-05
rs10865870	3	36152157	G	T	intergenic	ARPP21,STAC	0.37	-0.2	1.84E-06	6.04E-05
rs10865871	3	36152176	A	G	intergenic	ARPP21,STAC	0.37	-0.2	1.84E-06	6.04E-05
rs10865872	3	36152237	A	G	intergenic	ARPP21,STAC	0.37	-0.2	1.84E-06	6.04E-05
rs11129693	3	36154190	T	C	intergenic	ARPP21,STAC	0.37	-0.2	1.84E-06	6.04E-05
rs11708406	3	36155009	C	G	intergenic	ARPP21,STAC	0.37	-0.2	1.84E-06	6.04E-05
rs11720858	3	36153779	C	A	intergenic	ARPP21,STAC	0.37	-0.2	1.84E-06	6.04E-05
rs11720937	3	36153983	G	A	intergenic	ARPP21,STAC	0.37	-0.2	1.84E-06	6.04E-05
rs12488543	3	36150742	T	C	intergenic	ARPP21,STAC	0.37	-0.2	1.84E-06	6.04E-05
rs12489549	3	36151949	A	G	intergenic	ARPP21,STAC	0.37	-0.2	1.84E-06	6.04E-05
rs12639250	3	36153742	G	A	intergenic	ARPP21,STAC	0.37	-0.2	1.84E-06	6.04E-05
rs13067611	3	36148449	G	A	intergenic	ARPP21,STAC	0.37	-0.2	1.84E-06	6.04E-05
rs13068567	3	36148763	C	G	intergenic	ARPP21,STAC	0.37	-0.2	1.84E-06	6.04E-05
rs13072328	3	36154647	T	C	intergenic	ARPP21,STAC	0.37	-0.2	1.84E-06	6.04E-05
rs13072340	3	36154673	T	C	intergenic	ARPP21,STAC	0.37	-0.2	1.84E-06	6.04E-05
rs13079004	3	36156020	G	A	intergenic	ARPP21,STAC	0.37	-0.2	1.84E-06	6.04E-05
rs13079179	3	36156044	T	C	intergenic	ARPP21,STAC	0.37	-0.2	1.84E-06	6.04E-05
rs13079225	3	36156154	C	A	intergenic	ARPP21,STAC	0.37	-0.2	1.84E-06	6.04E-05
rs13079532	3	36156214	T	C	intergenic	ARPP21,STAC	0.37	-0.2	1.84E-06	6.04E-05
rs13079830	3	36156216	A	G	intergenic	ARPP21,STAC	0.37	-0.2	1.84E-06	6.04E-05
rs13086514	3	36151782	T	C	intergenic	ARPP21,STAC	0.37	-0.2	1.84E-06	6.04E-05
rs13095291	3	36154712	C	T	intergenic	ARPP21,STAC	0.37	-0.2	1.84E-06	6.04E-05
rs13098664	3	36153834	G	A	intergenic	ARPP21,STAC	0.37	-0.2	1.84E-06	6.04E-05
rs13099825	3	36147255	G	A	intergenic	ARPP21,STAC	0.37	-0.2	1.84E-06	6.04E-05
rs1449992	3	36155346	G	T	intergenic	ARPP21,STAC	0.37	-0.2	1.84E-06	6.04E-05
rs17034235	3	36149523	A	T	intergenic	ARPP21,STAC	0.37	-0.2	1.84E-06	6.04E-05
rs2122390	3	36149974	A	G	intergenic	ARPP21,STAC	0.37	-0.2	1.84E-06	6.04E-05
rs2122392	3	36152536	T	C	intergenic	ARPP21,STAC	0.37	-0.2	1.84E-06	6.04E-05
rs2167131	3	36152677	C	A	intergenic	ARPP21,STAC	0.37	-0.2	1.84E-06	6.04E-05
rs34167736	3	36149795	G	A	intergenic	ARPP21,STAC	0.37	-0.2	1.84E-06	6.04E-05
rs34894908	3	36144617	G	A	intergenic	ARPP21,STAC	0.37	-0.2	1.84E-06	6.04E-05
rs35806760	3	36154892	A	G	intergenic	ARPP21,STAC	0.37	-0.2	1.84E-06	6.04E-05
rs4274701	3	36149460	G	A	intergenic	ARPP21,STAC	0.37	-0.2	1.84E-06	6.04E-05
rs4678839	3	36156606	A	T	intergenic	ARPP21,STAC	0.37	-0.2	1.84E-06	6.04E-05
rs4678840	3	36156820	T	C	intergenic	ARPP21,STAC	0.37	-0.2	1.84E-06	6.04E-05

rs4678841	3	36156830	C	T	intergenic	ARPP21,STAC	0.37	-0.2	1.84E-06	6.04E-05
rs4678842	3	36156863	G	A	intergenic	ARPP21,STAC	0.37	-0.2	1.84E-06	6.04E-05
rs4678843	3	36156936	T	C	intergenic	ARPP21,STAC	0.37	-0.2	1.84E-06	6.04E-05
rs4678844	3	36156953	T	A	intergenic	ARPP21,STAC	0.37	-0.2	1.84E-06	6.04E-05
rs55994095	3	36143184	G	A	intergenic	ARPP21,STAC	0.37	-0.2	1.84E-06	6.04E-05
rs60006029	3	36142927	A	C	intergenic	ARPP21,STAC	0.37	-0.2	1.84E-06	6.04E-05
rs12492838	3	36160523	T	G	intergenic	ARPP21,STAC	0.37	-0.2	1.98E-06	7.13E-05
rs12486141	3	36172854	A	G	intergenic	ARPP21,STAC	0.36	-0.2	2.07E-06	6.51E-05
rs11718371	3	36157193	G	A	intergenic	ARPP21,STAC	0.37	-0.19	2.14E-06	6.82E-05
rs34033592	3	36157597	C	T	intergenic	ARPP21,STAC	0.37	-0.19	2.14E-06	6.82E-05
rs4678520	3	36158282	A	G	intergenic	ARPP21,STAC	0.37	-0.19	2.14E-06	6.82E-05
rs4678845	3	36158113	T	C	intergenic	ARPP21,STAC	0.37	-0.19	2.14E-06	6.82E-05
rs2382089	9	9972321	C	T	intronic	PTPRD	0.28	-0.21	2.15E-06	3.62E-04
rs35597811	3	36170560	C	A	intergenic	ARPP21,STAC	0.37	-0.19	2.19E-06	8.06E-05
rs9843084	3	36159165	G	C	intergenic	ARPP21,STAC	0.37	-0.19	2.21E-06	7.99E-05
rs9869374	3	36163838	A	G	intergenic	ARPP21,STAC	0.38	-0.19	2.23E-06	8.46E-05
rs12630703	3	36162020	G	A	intergenic	ARPP21,STAC	0.37	-0.19	2.31E-06	7.88E-05
rs7044854	9	9956016	G	A	intronic	PTPRD	0.41	-0.19	2.40E-06	7.06E-03
rs201215046	3	36129692	A	G	intergenic	ARPP21,STAC	0.35	-0.2	2.41E-06	1.19E-04
rs12495220	3	36165195	C	T	intergenic	ARPP21,STAC	0.37	-0.19	2.46E-06	8.54E-05
rs4584471	10	30011336	T	C	intronic	SVIL	0.31	0.2	2.50E-06	6.63E-03
rs2834655	21	36238507	A	G	intronic	RUNX1	0.29	-0.21	2.63E-06	1.26E-03
rs10816266	9	9960778	A	T	intronic	PTPRD	0.28	-0.21	2.71E-06	2.61E-03
rs6532775	4	77939724	G	A	intronic	11-Sep	0.50	0.19	3.14E-06	7.40E-05
rs7612828	3	36162404	A	G	intergenic	ARPP21,STAC	0.37	-0.19	3.18E-06	9.92E-05
rs9883761	3	36171911	T	C	intergenic	ARPP21,STAC	0.37	-0.19	3.21E-06	9.23E-05
rs9883773	3	36171933	G	C	intergenic	ARPP21,STAC	0.37	-0.19	3.21E-06	9.23E-05
rs10222423	3	36171758	C	T	intergenic	ARPP21,STAC	0.37	-0.19	3.29E-06	1.09E-04
rs10440106	3	36171677	T	G	intergenic	ARPP21,STAC	0.37	-0.19	3.29E-06	1.09E-04
rs12491501	3	36174614	T	G	intergenic	ARPP21,STAC	0.37	-0.19	3.29E-06	1.09E-04
rs1375873	3	36171153	C	T	intergenic	ARPP21,STAC	0.37	-0.19	3.29E-06	1.09E-04
rs1375874	3	36171193	T	C	intergenic	ARPP21,STAC	0.37	-0.19	3.29E-06	1.09E-04
rs1584561	3	36172488	G	A	intergenic	ARPP21,STAC	0.37	-0.19	3.29E-06	1.09E-04
rs1584562	3	36172563	C	T	intergenic	ARPP21,STAC	0.37	-0.19	3.29E-06	1.09E-04
rs1597412	3	36176466	C	T	intergenic	ARPP21,STAC	0.37	-0.19	3.29E-06	1.09E-04
rs1839416	3	36176579	T	C	intergenic	ARPP21,STAC	0.37	-0.19	3.29E-06	1.09E-04
rs1839417	3	36176655	G	A	intergenic	ARPP21,STAC	0.37	-0.19	3.29E-06	1.09E-04
rs1901021	3	36168698	A	C	intergenic	ARPP21,STAC	0.37	-0.19	3.29E-06	1.09E-04
rs2884848	3	36171119	A	G	intergenic	ARPP21,STAC	0.37	-0.19	3.29E-06	1.09E-04
rs28858454	3	36174739	G	A	intergenic	ARPP21,STAC	0.37	-0.19	3.29E-06	1.09E-04
rs4678521	3	36173593	T	C	intergenic	ARPP21,STAC	0.37	-0.19	3.29E-06	1.09E-04
rs6550397	3	36172921	A	G	intergenic	ARPP21,STAC	0.37	-0.19	3.29E-06	1.09E-04

rs6550400	3	36177024	G	T	intergenic	ARPP21,STAC	0.37	-0.19	3.29E-06	1.09E-04
rs6784507	3	36172930	T	C	intergenic	ARPP21,STAC	0.37	-0.19	3.29E-06	1.09E-04
rs6784587	3	36172960	T	C	intergenic	ARPP21,STAC	0.37	-0.19	3.29E-06	1.09E-04
rs6787068	3	36178950	T	G	intergenic	ARPP21,STAC	0.37	-0.19	3.29E-06	1.09E-04
rs9311126	3	36170636	A	G	intergenic	ARPP21,STAC	0.37	-0.19	3.29E-06	1.09E-04
rs9817686	3	36169927	C	T	intergenic	ARPP21,STAC	0.37	-0.19	3.29E-06	1.09E-04
rs9846222	3	36172060	T	A	intergenic	ARPP21,STAC	0.37	-0.19	3.29E-06	1.09E-04
rs9846682	3	36172296	G	A	intergenic	ARPP21,STAC	0.37	-0.19	3.29E-06	1.09E-04
rs9851057	3	36176066	A	G	intergenic	ARPP21,STAC	0.37	-0.19	3.29E-06	1.09E-04
rs9861270	3	36177950	T	C	intergenic	ARPP21,STAC	0.37	-0.19	3.29E-06	1.09E-04
rs9865483	3	36175101	C	T	intergenic	ARPP21,STAC	0.37	-0.19	3.29E-06	1.09E-04
rs9883792	3	36171967	T	C	intergenic	ARPP21,STAC	0.37	-0.19	3.29E-06	1.09E-04
rs1597413	3	36176721	G	C	intergenic	ARPP21,STAC	0.37	-0.19	3.40E-06	1.05E-04
rs9813550	3	36163647	C	T	intergenic	ARPP21,STAC	0.37	-0.19	3.46E-06	1.07E-04
rs9848822	3	36160204	A	G	intergenic	ARPP21,STAC	0.37	-0.19	3.46E-06	1.07E-04
rs9868610	3	36163557	G	C	intergenic	ARPP21,STAC	0.37	-0.19	3.46E-06	1.07E-04
rs9869042	3	36163644	C	G	intergenic	ARPP21,STAC	0.37	-0.19	3.46E-06	1.07E-04
rs9869686	3	36164043	C	G	intergenic	ARPP21,STAC	0.37	-0.19	3.47E-06	1.08E-04
rs11721250	3	36162731	C	T	intergenic	ARPP21,STAC	0.37	-0.19	3.48E-06	8.83E-05
rs35303461	2	218830626	T	C	intergenic	TNS1,CXCR2P1	0.10	-0.32	3.57E-06	3.42E-05
rs9858239	3	36161639	T	C	intergenic	ARPP21,STAC	0.37	-0.19	3.62E-06	1.05E-04
rs35090855	2	218830592	T	C	intergenic	TNS1,CXCR2P1	0.10	-0.32	3.67E-06	3.24E-05
rs62477365	7	119105162	C	T	intergenic	ANKRD7,KCND2	0.09	-0.34	3.77E-06	8.30E-04
rs34082344	3	36148812	G	C	intergenic	ARPP21,STAC	0.37	-0.19	3.83E-06	8.73E-05
rs34966051	3	36148815	G	A	intergenic	ARPP21,STAC	0.37	-0.19	3.83E-06	8.73E-05
rs7231688	18	76342080	A	G	intergenic	LINC01029,SALL3	0.22	0.22	3.93E-06	8.26E-03
rs4804181	19	12509536	C	A	intronic	ZNF799	0.22	0.23	4.14E-06	1.69E-04
rs6784982	3	36173158	C	G	intergenic	ARPP21,STAC	0.37	-0.19	4.38E-06	1.11E-04
rs9945869	18	76344891	A	G	intergenic	LINC01029,SALL3	0.22	0.22	4.50E-06	1.02E-02
rs11081627	18	76338532	T	C	intergenic	LINC01029,SALL3	0.22	0.22	4.71E-06	7.78E-03
rs1936367	9	9963968	C	T	intronic	PTPRD	0.28	-0.2	4.88E-06	2.64E-03
rs72720951	5	2532480	G	A	intergenic	LOC100506858,IRX2	0.19	0.23	4.90E-06	2.29E-03
rs4742644	9	9959413	C	T	intronic	PTPRD	0.28	-0.2	5.31E-06	3.40E-03
rs73060126	3	36120877	A	G	intergenic	ARPP21,STAC	0.39	-0.2	5.58E-06	8.41E-04
rs73050457	19	39745058	T	C	intergenic	IFNL4,IFNL2	0.10	-0.32	5.60E-06	1.47E-04
rs2218907	3	36112097	T	C	intergenic	ARPP21,STAC	0.48	0.18	5.79E-06	1.46E-06
rs7431028	3	36110865	T	G	intergenic	ARPP21,STAC	0.48	0.18	5.87E-06	1.48E-06
rs9311127	3	36170803	A	C	intergenic	ARPP21,STAC	0.36	-0.19	5.97E-06	1.99E-04
rs9311128	3	36170809	C	T	intergenic	ARPP21,STAC	0.36	-0.19	5.97E-06	1.99E-04
rs9311129	3	36170812	A	G	intergenic	ARPP21,STAC	0.36	-0.19	5.97E-06	1.99E-04
rs764263	6	133055612	C	G	intronic	VNN3	0.55	0.18	5.98E-06	2.57E-04
rs4472062	3	22423338	G	C	intergenic	ZNF385D-AS2,UBE2E2	0.29	-0.23	5.99E-06	2.76E-02

rs7138264	12	8075117	A	G	intronic	SLC2A3	0.13	0.26	6.12E-06	1.69E-03
rs11706133	3	5892059	G	T	intergenic	MIR4790,LOC101927347	0.11	0.29	6.28E-06	5.44E-04
rs13362153	5	91163650	G	C	intergenic	ARRDC3-AS1,NR2F1-AS1	0.24	0.21	6.35E-06	3.48E-03
rs67085826	18	76537030	G	A	intergenic	LINC01029,SALL3	0.18	-0.23	6.38E-06	7.27E-04
rs6785074	3	36173266	T	G	intergenic	ARPP21,STAC	0.37	-0.19	6.51E-06	1.81E-04
rs6785075	3	36173267	T	G	intergenic	ARPP21,STAC	0.37	-0.19	6.51E-06	1.81E-04
rs1375875	3	36171547	T	A	intergenic	ARPP21,STAC	0.37	-0.19	6.65E-06	1.76E-04
rs36095017	18	76537186	G	A	intergenic	LINC01029,SALL3	0.18	-0.23	6.77E-06	8.07E-04
rs62371708	5	115069090	T	C	intergenic	LOC102467217,CDO1	0.21	-0.21	6.77E-06	2.72E-04
rs68112016	18	76536915	G	A	intergenic	LINC01029,SALL3	0.18	-0.23	6.81E-06	6.76E-04
rs4804669	19	12502457	A	G	exonic	ZNF799	0.21	0.23	6.93E-06	2.62E-04
rs840225	13	107566858	T	C	intergenic	LINC00443,FAM155A	0.36	-0.22	7.02E-06	4.45E-04
rs2373239	2	218835438	G	C	intergenic	TNS1,CXCR2P1	0.12	-0.27	7.20E-06	5.38E-04
rs10978137	9	9961495	T	G	intronic	PTPRD	0.27	-0.2	7.75E-06	2.77E-03
rs72956174	6	102639791	C	T	intergenic	GRIK2,NONE	0.16	0.24	7.96E-06	2.97E-04
rs12882183	14	87120821	A	T	intergenic	LOC101928767,LOC283585	0.34	0.18	8.30E-06	4.01E-02
rs630693	11	107197606	C	G	UTR3	CWF19L2	0.53	0.18	8.46E-06	4.92E-05
rs2473238	1	22590331	G	C	intergenic	WNT4,ZBTB40	0.55	0.17	9.10E-06	8.79E-04
rs10978138	9	9964969	C	T	intronic	PTPRD	0.34	-0.18	9.60E-06	5.13E-03
rs9668489	12	8075286	C	T	intronic	SLC2A3	0.13	0.26	9.71E-06	1.66E-03
rs6907435	6	102638605	A	G	intergenic	GRIK2,NONE	0.16	0.23	9.83E-06	3.49E-04

Table S3.4. Top SNPs ($P < 1E-05$) for Longitudinal Change in the Memory Domain

SNP	CHR	BP	A1	A2	Region	GENE	MAF Meta	BETA Meta	P-value Meta	P-value Global
rs3991621	5	119409254	G	A	intergenic	FAM170A,PRR16	0.14	0.29	7.35E-07	2.24E-06
rs3991624	5	119409232	G	A	intergenic	FAM170A,PRR16	0.14	0.29	7.35E-07	2.24E-06
rs3991625	5	119409253	T	C	intergenic	FAM170A,PRR16	0.14	0.29	7.35E-07	2.24E-06
rs28636751	3	192211685	G	C	intronic	FGF12	0.53	0.21	1.12E-06	3.35E-04
rs61310274	1	179562740	C	G	exonic	TDRD5	0.34	-0.2	1.54E-06	2.94E-04
rs13316167	3	161656593	T	C	intergenic	OTOL1,LINC01192	0.21	0.24	1.60E-06	7.17E-03
rs2897044	3	161654980	A	C	intergenic	OTOL1,LINC01192	0.21	0.24	1.60E-06	7.17E-03
rs2897045	3	161655316	C	T	intergenic	OTOL1,LINC01192	0.21	0.24	1.60E-06	7.17E-03
rs4455332	3	161655423	A	C	intergenic	OTOL1,LINC01192	0.21	0.24	1.60E-06	7.17E-03
rs4501127	3	161655796	C	A	intergenic	OTOL1,LINC01192	0.21	0.24	1.60E-06	7.17E-03
rs6778365	3	161657384	A	C	intergenic	OTOL1,LINC01192	0.21	0.24	1.60E-06	7.17E-03
rs200668351	17	1062992	A	G	intronic	ABR	0.22	0.34	1.65E-06	2.65E-04
rs12330372	3	161658528	C	G	intergenic	OTOL1,LINC01192	0.20	0.24	1.67E-06	8.62E-03
rs55635521	1	179566848	C	T	intronic	TDRD5	0.34	-0.2	1.67E-06	3.06E-04
rs6689426	1	179569722	T	C	intronic	TDRD5	0.33	-0.2	1.89E-06	4.90E-04
rs60096092	1	179573130	A	T	intronic	TDRD5	0.33	-0.2	2.08E-06	5.16E-04
rs11581272	1	179675578	T	C	intergenic	TDRD5,FAM163A	0.33	-0.2	2.58E-06	5.45E-04
rs742801	1	29718865	G	C	intergenic	LOC101928460; LOC101929406	0.51	0.22	3.87E-06	2.52E-05
rs377338379	1	179607282	T	C	intronic	TDRD5	0.34	-0.19	3.97E-06	4.12E-04
rs2295752	6	6249067	A	C	intronic	F13A1	0.23	-0.23	4.26E-06	3.55E-04
rs488277	3	182887673	C	T	intergenic	LAMP3,MCF2L2	0.11	0.27	4.91E-06	3.68E-04
rs630527	3	182887667	A	G	intergenic	LAMP3,MCF2L2	0.11	0.27	4.91E-06	3.68E-04
rs631755	3	182887921	A	C	intergenic	LAMP3,MCF2L2	0.11	0.27	5.24E-06	4.27E-04
rs12609351	19	50985038	T	C	intronic	EMC10	0.20	-0.22	5.32E-06	3.49E-05
rs11122508	1	230542201	G	C	intronic	PGBD5	0.55	0.2	5.42E-06	1.17E-05
rs4751906	10	116194780	G	C	UTR3	ABLIM1	0.53	0.18	5.47E-06	3.30E-04
rs521981	3	182889001	C	T	intergenic	LAMP3,MCF2L2	0.11	0.27	6.30E-06	4.96E-04
rs831249	3	182892091	C	T	intergenic	LAMP3,MCF2L2	0.11	0.27	6.36E-06	4.31E-04
rs13243882	7	28287287	T	A	intergenic	JAZF1-AS1,CREB5	0.53	0.18	6.38E-06	3.05E-06
rs34476301	3	105336788	A	G	intergenic	ALCAM,CBLB	0.08	0.37	6.50E-06	8.43E-05
rs6425580	1	179592270	T	C	intronic	TDRD5	0.35	-0.18	6.63E-06	6.20E-04
rs13434055	3	182889449	C	T	intergenic	LAMP3,MCF2L2	0.11	0.27	6.70E-06	5.11E-04
rs1629673	3	182889310	G	A	intergenic	LAMP3,MCF2L2	0.11	0.27	6.70E-06	5.11E-04
rs544146	3	182889168	A	G	intergenic	LAMP3,MCF2L2	0.11	0.27	6.70E-06	5.11E-04
rs6443858	3	182891718	C	G	intergenic	LAMP3,MCF2L2	0.11	0.27	6.70E-06	5.11E-04
rs831246	3	182891880	T	C	intergenic	LAMP3,MCF2L2	0.11	0.27	6.70E-06	5.11E-04
rs831247	3	182891900	G	C	intergenic	LAMP3,MCF2L2	0.11	0.27	6.70E-06	5.11E-04
rs55852023	3	182892163	C	T	intergenic	LAMP3,MCF2L2	0.11	0.27	6.95E-06	5.21E-04
rs3818682	6	89915684	T	C	intronic	GABRR1	0.38	-0.18	6.98E-06	2.64E-04

rs429358	19	45411941	C	T	exonic	APOE	0.10	-0.29	7.18E-06	1.03E-05
rs56376309	1	179622996	G	A	intronic	TDRD5	0.35	-0.18	7.22E-06	6.48E-04
rs7547988	1	179629123	A	G	intronic	TDRD5	0.35	-0.18	7.22E-06	6.48E-04
rs12045588	1	179630536	T	C	intronic	TDRD5	0.35	-0.18	7.23E-06	6.88E-04
rs4420638	19	45422946	G	A	downstream	APOC1	0.15	-0.24	8.05E-06	5.15E-05
rs10157829	1	179586314	G	A	intronic	TDRD5	0.35	-0.18	8.47E-06	8.40E-04
rs6072411	20	40168384	G	A	intronic	CHD6	0.19	0.22	8.48E-06	1.90E-05
rs12161428	1	179615732	T	C	intronic	TDRD5	0.35	-0.18	8.65E-06	8.52E-04
rs3818683	6	89915678	C	T	intronic	GABRR1	0.38	-0.18	8.73E-06	3.63E-04
rs34654927	3	105336694	A	C	intergenic	ALCAM,CBLB	0.08	0.37	8.84E-06	1.01E-04
rs10913848	1	179615695	C	G	intronic	TDRD5	0.35	-0.18	8.97E-06	7.70E-04
rs6656590	1	214751786	T	C	intergenic	PTPN14,CENPF	0.31	0.19	9.17E-06	1.02E-04
rs36185880	1	179616218	G	A	intronic	TDRD5	0.35	-0.18	9.33E-06	8.60E-04
rs6901256	6	37080126	A	G	intergenic	FGD2,PIM1	0.34	-0.19	9.50E-06	1.28E-05
rs10913846	1	179613777	A	G	intronic	TDRD5	0.35	-0.18	9.55E-06	6.81E-04
rs62363118	5	85046197	G	T	intergenic	EDIL3,NBPF22P	0.30	0.19	9.56E-06	4.23E-03

Table S3.5. Top SNPs ($P < 1E-05$) for Longitudinal Change in the Visuospatial Ability Domain

SNP	CHR	BP	A1	A2	Region	GENE	MAF Meta	BETA Meta	P-value Meta	P-value Global
rs57169846	7	53655073	A	G	intergenic	POM121L12,LINC01446	0.27	0.22	2.77E-06	1.11E-01
rs12668067	7	53656073	G	A	intergenic	POM121L12,LINC01446	0.27	0.22	2.90E-06	1.09E-01
rs77993098	2	35063984	T	A	intergenic	MYADML,LOC100288911	0.20	-0.24	3.56E-06	9.26E-01
rs2075199	16	51538763	T	C	intergenic	SALL1,LOC101927364	0.20	-0.26	4.28E-06	7.13E-01
rs13405485	2	34978311	A	G	intergenic	MYADML,LOC100288911	0.29	-0.21	4.36E-06	8.48E-01
rs60878796	2	35054007	A	T	intergenic	MYADML,LOC100288911	0.20	-0.24	4.80E-06	9.20E-01
rs60686175	1	209756812	C	T	upstream	CAMK1G	0.22	0.22	5.51E-06	2.51E-02
rs10194489	2	35056794	T	C	intergenic	MYADML,LOC100288911	0.20	-0.23	6.20E-06	8.28E-01
rs55715896	7	53647536	C	T	intergenic	POM121L12,LINC01446	0.27	0.21	6.46E-06	1.09E-01
rs6957101	7	53646156	C	T	intergenic	POM121L12,LINC01446	0.27	0.21	6.46E-06	1.09E-01
rs12084657	1	209751795	C	G	intergenic	MIR205HG,CAMK1G	0.22	0.22	7.14E-06	2.63E-02
rs7512091	1	209753248	A	T	intergenic	MIR205HG,CAMK1G	0.22	0.22	7.14E-06	2.63E-02
rs140810004	7	153748948	T	C	intronic	DPP6	0.39	-0.23	7.20E-06	4.43E-01
rs61869228	10	126901057	T	C	intergenic	CTBP2,TEX36-AS1	0.09	0.31	8.11E-06	3.60E-01
rs145866284	16	51512759	C	T	intergenic	SALL1,LOC101927364	0.19	-0.24	8.39E-06	7.77E-01
rs13338826	16	51497459	G	C	intergenic	SALL1,LOC101927364	0.19	-0.25	8.53E-06	4.39E-01
rs10169121	2	35068284	A	C	intergenic	MYADML,LOC100288911	0.20	-0.23	8.67E-06	8.13E-01
rs6593447	10	45400235	G	A	ncRNA; intronic	TMEM72-AS1	0.39	-0.18	8.76E-06	3.34E-02
rs76927693	2	35037178	C	A	intergenic	MYADML,LOC100288911	0.28	-0.21	9.29E-06	8.22E-01
rs17014822	1	209756470	G	A	upstream	CAMK1G	0.21	0.22	9.54E-06	1.36E-02
rs58987909	1	209735238	G	C	intergenic	MIR205HG,CAMK1G	0.21	0.22	9.65E-06	1.61E-02
rs61822168	1	209735726	G	A	intergenic	MIR205HG,CAMK1G	0.21	0.22	9.65E-06	1.61E-02
rs10169451	2	35038515	T	C	intergenic	MYADML,LOC100288911	0.27	-0.21	9.85E-06	8.90E-01

Table S4. *P*-values of the Top SNP (hg37-Chr13:52335201:rs9535753) for Longitudinal Changes in in all Domains

Studies	Meta		MyHAT		MoVIES	
<i>Minor Allele Frequency</i>	17.15%		18.11%		15.21%	
Domains	Beta	<i>P</i> -value	Beta	<i>P</i> -value	Beta	<i>P</i> -value
Attention/processing speed	0.2818	3.37e-08	0.2064	7.57e-04	0.4881	1.47e-06
Executive function	0.2220	1.94e-05	0.1969	1.31e-03	0.2920	4.31e-03
Language	0.1277	1.38e-02	0.1135	6.28e-02	0.1681	1.03e-01
Memory	0.0769	1.51e-01	0.0854	1.65e-01	0.0534	6.03e-01
Visuospatial ability	0.0003	9.89e-01	-0.0036	9.55e-01	0.0104	9.20e-01
Global cognition	0.1847	4.04e-04	0.1602	9.64e-03	0.2514	1.37e-02

Table S5. Expression Quantitative Traits Loci (eQTL) Results for the *WDFY2* Genome-wide Significant SNPs for Attention/processing speed in the Brain and Blood

SNP	BP	LD	META_P	eQTL_GENE	eQTL beta	eQTL <i>P</i> -value	Tissue
rs17532412	52308103	1.00	3.37E-08	WDFY2	0.20	4.41E-05	Whole_Blood
rs17532412	52308103	1.00	3.37E-08	WDFY2	0.34	1.07E-04	Brain_Cerebellar_Hemisphere
rs17532412	52308103	1.00	3.37E-08	WDFY2	0.35	6.92E-04	Brain_Cerebellum
rs17532412	52308103	1.00	3.37E-08	CKAP2	-0.35	2.16E-03	Brain_Cortex
rs17532412	52308103	1.00	3.37E-08	WDFY2	0.30	2.18E-03	Brain_Hippocampus
rs17532412	52308103	1.00	3.37E-08	ATP7B	-0.41	2.73E-03	Brain_Cerebellum
rs17532412	52308103	1.00	3.37E-08	ATP7B	-0.41	5.60E-03	Brain_Spinal_cord_cervical_c-1
rs17532412	52308103	1.00	3.37E-08	CTAGE3P	-0.43	8.75E-03	Brain_Putamen_basal_ganglia
rs17532412	52308103	1.00	3.37E-08	WDFY2	0.27	1.15E-02	Brain_Hypothalamus
rs17532412	52308103	1.00	3.37E-08	HNRNPA1L2	0.15	1.33E-02	Whole_Blood
rs17532412	52308103	1.00	3.37E-08	CTAGE3P	-0.55	1.42E-02	Brain_Spinal_cord_cervical_c-1
rs17532412	52308103	1.00	3.37E-08	RP11-24B19.3	0.44	1.57E-02	Brain_Amygdala
rs17532412	52308103	1.00	3.37E-08	INTS6	-0.42	1.65E-02	Brain_Hippocampus
rs17532412	52308103	1.00	3.37E-08	DHRS12	-0.26	1.68E-02	Brain_Hypothalamus
rs17532412	52308103	1.00	3.37E-08	ALG11	-0.27	1.68E-02	Brain_Spinal_cord_cervical_c-1
rs17532412	52308103	1.00	3.37E-08	DHRS12	-0.21	1.76E-02	Brain_Cerebellar_Hemisphere
rs17532412	52308103	1.00	3.37E-08	WDFY2	0.17	2.29E-02	Brain_Cortex
rs17532412	52308103	1.00	3.37E-08	UTP14C	0.20	2.56E-02	Brain_Cortex
rs17532412	52308103	1.00	3.37E-08	NEK5	-0.22	2.66E-02	Brain_Caudate_basal_ganglia
rs17532412	52308103	1.00	3.37E-08	INTS6	-0.40	3.09E-02	Brain_Substantia_nigra

rs17532412	52308103	1.00	3.37E-08	UTP14C	0.24	3.12E-02	Brain_Amygdala
rs17532412	52308103	1.00	3.37E-08	MRPS31P5	-0.17	3.17E-02	Brain_Caudate_basal_ganglia
rs17532412	52308103	1.00	3.37E-08	THSD1	0.28	3.29E-02	Brain_Hippocampus
rs17532412	52308103	1.00	3.37E-08	ALG11	-0.18	3.91E-02	Brain_Nucleus_accumbens_basal_ganglia
rs17532412	52308103	1.00	3.37E-08	NEK5	-0.38	4.16E-02	Brain_Spinal_cord_cervical_c-1
rs17532412	52308103	1.00	3.37E-08	INTS6	-0.32	4.19E-02	Brain_Hypothalamus
rs17532412	52308103	1.00	3.37E-08	WDFY2	0.31	4.32E-02	Brain_Spinal_cord_cervical_c-1
rs17532412	52308103	1.00	3.37E-08	CKAP2	-0.24	4.66E-02	Brain_Cerebellar_Hemisphere
rs9535743	52309076	1.00	4.78E-08	WDFY2	0.22	8.95E-06	Whole_Blood
rs9535743	52309076	1.00	4.78E-08	WDFY2	0.34	1.41E-04	Brain_Cerebellar_Hemisphere
rs9535743	52309076	1.00	4.78E-08	WDFY2	0.32	1.78E-03	Brain_Cerebellum
rs9535743	52309076	1.00	4.78E-08	WDFY2	0.30	2.18E-03	Brain_Hippocampus
rs9535743	52309076	1.00	4.78E-08	CKAP2	-0.34	2.29E-03	Brain_Cortex
rs9535743	52309076	1.00	4.78E-08	ATP7B	-0.39	4.01E-03	Brain_Cerebellum
rs9535743	52309076	1.00	4.78E-08	CTAGE3P	-0.58	8.49E-03	Brain_Spinal_cord_cervical_c-1
rs9535743	52309076	1.00	4.78E-08	CTAGE3P	-0.43	8.75E-03	Brain_Putamen_basal_ganglia
rs9535743	52309076	1.00	4.78E-08	ATP7B	-0.39	9.87E-03	Brain_Spinal_cord_cervical_c-1
rs9535743	52309076	1.00	4.78E-08	WDFY2	0.27	1.15E-02	Brain_Hypothalamus
rs9535743	52309076	1.00	4.78E-08	WDFY2	0.37	1.43E-02	Brain_Spinal_cord_cervical_c-1
rs9535743	52309076	1.00	4.78E-08	WDFY2	0.18	1.46E-02	Brain_Cortex
rs9535743	52309076	1.00	4.78E-08	RP11-24B19.3	0.44	1.57E-02	Brain_Amygdala
rs9535743	52309076	1.00	4.78E-08	INTS6	-0.42	1.65E-02	Brain_Hippocampus
rs9535743	52309076	1.00	4.78E-08	DHRS12	-0.26	1.68E-02	Brain_Hypothalamus
rs9535743	52309076	1.00	4.78E-08	NEK5	-0.22	2.66E-02	Brain_Caudate_basal_ganglia
rs9535743	52309076	1.00	4.78E-08	DHRS12	-0.20	2.92E-02	Brain_Cerebellar_Hemisphere
rs9535743	52309076	1.00	4.78E-08	ALG11	-0.25	2.98E-02	Brain_Spinal_cord_cervical_c-1
rs9535743	52309076	1.00	4.78E-08	INTS6	-0.40	3.09E-02	Brain_Substantia_nigra
rs9535743	52309076	1.00	4.78E-08	UTP14C	0.24	3.12E-02	Brain_Amygdala
rs9535743	52309076	1.00	4.78E-08	MRPS31P5	-0.17	3.17E-02	Brain_Caudate_basal_ganglia
rs9535743	52309076	1.00	4.78E-08	THSD1	0.28	3.29E-02	Brain_Hippocampus
rs9535743	52309076	1.00	4.78E-08	HNRNPA1L2	0.13	3.38E-02	Whole_Blood
rs9535743	52309076	1.00	4.78E-08	ALG11	-0.18	3.91E-02	Brain_Nucleus_accumbens_basal_ganglia
rs9535743	52309076	1.00	4.78E-08	CKAP2	-0.25	3.92E-02	Brain_Cerebellar_Hemisphere
rs9535743	52309076	1.00	4.78E-08	INTS6	-0.32	4.19E-02	Brain_Hypothalamus
rs9535743	52309076	1.00	4.78E-08	UTP14C	0.18	4.19E-02	Brain_Cortex
rs9535743	52309076	1.00	4.78E-08	NEK5	-0.37	4.67E-02	Brain_Spinal_cord_cervical_c-1
rs9535744	52311481	1.00	3.37E-08	WDFY2	0.20	4.58E-05	Whole_Blood
rs9535744	52311481	1.00	3.37E-08	WDFY2	0.34	1.07E-04	Brain_Cerebellar_Hemisphere
rs9535744	52311481	1.00	3.37E-08	WDFY2	0.37	4.92E-04	Brain_Cerebellum
rs9535744	52311481	1.00	3.37E-08	WDFY2	0.30	2.18E-03	Brain_Hippocampus
rs9535744	52311481	1.00	3.37E-08	CKAP2	-0.33	3.97E-03	Brain_Cortex

rs9535744	52311481	1.00	3.37E-08	ATP7B	-0.41	7.82E-03	Brain_Spinal_cord_cervical_c-1
rs9535744	52311481	1.00	3.37E-08	ATP7B	-0.37	8.16E-03	Brain_Cerebellum
rs9535744	52311481	1.00	3.37E-08	CTAGE3P	-0.43	9.29E-03	Brain_Putamen_basal_ganglia
rs9535744	52311481	1.00	3.37E-08	WDFY2	0.27	1.15E-02	Brain_Hypothalamus
rs9535744	52311481	1.00	3.37E-08	HNRNPA1L2	0.15	1.51E-02	Whole_Blood
rs9535744	52311481	1.00	3.37E-08	ALG11	-0.28	1.56E-02	Brain_Spinal_cord_cervical_c-1
rs9535744	52311481	1.00	3.37E-08	RP11-24B19.3	0.44	1.57E-02	Brain_Amygdala
rs9535744	52311481	1.00	3.37E-08	UTP14C	0.22	1.61E-02	Brain_Cortex
rs9535744	52311481	1.00	3.37E-08	INTS6	-0.42	1.65E-02	Brain_Hippocampus
rs9535744	52311481	1.00	3.37E-08	DHRS12	-0.26	1.68E-02	Brain_Hypothalamus
rs9535744	52311481	1.00	3.37E-08	CTAGE3P	-0.55	1.69E-02	Brain_Spinal_cord_cervical_c-1
rs9535744	52311481	1.00	3.37E-08	DHRS12	-0.21	1.76E-02	Brain_Cerebellar_Hemisphere
rs9535744	52311481	1.00	3.37E-08	NEK5	-0.22	2.91E-02	Brain_Caudate_basal_ganglia
rs9535744	52311481	1.00	3.37E-08	UTP14C	0.24	3.12E-02	Brain_Amygdala
rs9535744	52311481	1.00	3.37E-08	INTS6	-0.40	3.20E-02	Brain_Substantia_nigra
rs9535744	52311481	1.00	3.37E-08	MRPS31P5	-0.17	3.27E-02	Brain_Caudate_basal_ganglia
rs9535744	52311481	1.00	3.37E-08	THSD1	0.28	3.29E-02	Brain_Hippocampus
rs9535744	52311481	1.00	3.37E-08	ALG11	-0.19	3.50E-02	Brain_Nucleus_accumbens_basal_ganglia
rs9535744	52311481	1.00	3.37E-08	NEK5	-0.40	3.76E-02	Brain_Spinal_cord_cervical_c-1
rs9535744	52311481	1.00	3.37E-08	WDFY2	0.16	4.11E-02	Brain_Cortex
rs9535744	52311481	1.00	3.37E-08	INTS6	-0.32	4.19E-02	Brain_Hypothalamus
rs9535744	52311481	1.00	3.37E-08	INTS6-AS1	0.21	4.57E-02	Brain_Cerebellum
rs9535744	52311481	1.00	3.37E-08	CKAP2	-0.24	4.66E-02	Brain_Cerebellar_Hemisphere
rs9535745	52312297	0.99	4.78E-08	WDFY2	0.22	1.27E-05	Whole_Blood
rs9535745	52312297	0.99	4.78E-08	WDFY2	0.34	1.41E-04	Brain_Cerebellar_Hemisphere
rs9535745	52312297	0.99	4.78E-08	WDFY2	0.35	8.27E-04	Brain_Cerebellum
rs9535745	52312297	0.99	4.78E-08	WDFY2	0.30	2.18E-03	Brain_Hippocampus
rs9535745	52312297	0.99	4.78E-08	CKAP2	-0.34	2.67E-03	Brain_Cortex
rs9535745	52312297	0.99	4.78E-08	ATP7B	-0.41	3.26E-03	Brain_Cerebellum
rs9535745	52312297	0.99	4.78E-08	CTAGE3P	-0.58	8.49E-03	Brain_Spinal_cord_cervical_c-1
rs9535745	52312297	0.99	4.78E-08	CTAGE3P	-0.43	8.75E-03	Brain_Putamen_basal_ganglia
rs9535745	52312297	0.99	4.78E-08	ATP7B	-0.39	9.87E-03	Brain_Spinal_cord_cervical_c-1
rs9535745	52312297	0.99	4.78E-08	WDFY2	0.27	1.15E-02	Brain_Hypothalamus
rs9535745	52312297	0.99	4.78E-08	WDFY2	0.37	1.43E-02	Brain_Spinal_cord_cervical_c-1
rs9535745	52312297	0.99	4.78E-08	RP11-24B19.3	0.44	1.57E-02	Brain_Amygdala
rs9535745	52312297	0.99	4.78E-08	INTS6	-0.42	1.65E-02	Brain_Hippocampus
rs9535745	52312297	0.99	4.78E-08	DHRS12	-0.26	1.68E-02	Brain_Hypothalamus
rs9535745	52312297	0.99	4.78E-08	WDFY2	0.17	2.28E-02	Brain_Cortex
rs9535745	52312297	0.99	4.78E-08	UTP14C	0.20	2.36E-02	Brain_Cortex
rs9535745	52312297	0.99	4.78E-08	HNRNPA1L2	0.14	2.62E-02	Whole_Blood
rs9535745	52312297	0.99	4.78E-08	NEK5	-0.22	2.66E-02	Brain_Caudate_basal_ganglia

rs9535745	52312297	0.99	4.78E-08	DHRS12	-0.20	2.92E-02	Brain_Cerebellar_Hemisphere
rs9535745	52312297	0.99	4.78E-08	ALG11	-0.25	2.98E-02	Brain_Spinal_cord_cervical_c-1
rs9535745	52312297	0.99	4.78E-08	INTS6	-0.40	3.09E-02	Brain_Substantia_nigra
rs9535745	52312297	0.99	4.78E-08	UTP14C	0.24	3.12E-02	Brain_Amygdala
rs9535745	52312297	0.99	4.78E-08	MRPS31P5	-0.17	3.17E-02	Brain_Caudate_basal_ganglia
rs9535745	52312297	0.99	4.78E-08	THSD1	0.28	3.29E-02	Brain_Hippocampus
rs9535745	52312297	0.99	4.78E-08	ALG11	-0.18	3.91E-02	Brain_Nucleus_accumbens_basal_ganglia
rs9535745	52312297	0.99	4.78E-08	CKAP2	-0.25	3.92E-02	Brain_Cerebellar_Hemisphere
rs9535745	52312297	0.99	4.78E-08	INTS6	-0.32	4.19E-02	Brain_Hypothalamus
rs9535745	52312297	0.99	4.78E-08	NEK5	-0.37	4.67E-02	Brain_Spinal_cord_cervical_c-1
rs17532524	52316599	0.99	4.78E-08	WDFY2	0.22	9.96E-06	Whole_Blood
rs17532524	52316599	0.99	4.78E-08	WDFY2	0.33	1.93E-04	Brain_Cerebellar_Hemisphere
rs17532524	52316599	0.99	4.78E-08	WDFY2	0.34	1.26E-03	Brain_Cerebellum
rs17532524	52316599	0.99	4.78E-08	WDFY2	0.30	1.84E-03	Brain_Hippocampus
rs17532524	52316599	0.99	4.78E-08	ATP7B	-0.42	2.47E-03	Brain_Cerebellum
rs17532524	52316599	0.99	4.78E-08	CKAP2	-0.34	2.81E-03	Brain_Cortex
rs17532524	52316599	0.99	4.78E-08	ATP7B	-0.45	2.95E-03	Brain_Spinal_cord_cervical_c-1
rs17532524	52316599	0.99	4.78E-08	CTAGE3P	-0.45	6.25E-03	Brain_Putamen_basal_ganglia
rs17532524	52316599	0.99	4.78E-08	CTAGE3P	-0.61	7.60E-03	Brain_Spinal_cord_cervical_c-1
rs17532524	52316599	0.99	4.78E-08	WDFY2	0.27	1.30E-02	Brain_Hypothalamus
rs17532524	52316599	0.99	4.78E-08	RP11-24B19.3	0.45	1.35E-02	Brain_Amygdala
rs17532524	52316599	0.99	4.78E-08	WDFY2	0.37	1.46E-02	Brain_Spinal_cord_cervical_c-1
rs17532524	52316599	0.99	4.78E-08	DHRS12	-0.26	1.66E-02	Brain_Hypothalamus
rs17532524	52316599	0.99	4.78E-08	UTP14C	0.21	1.77E-02	Brain_Cortex
rs17532524	52316599	0.99	4.78E-08	INTS6	-0.41	1.91E-02	Brain_Hippocampus
rs17532524	52316599	0.99	4.78E-08	UTP14C	0.25	2.82E-02	Brain_Amygdala
rs17532524	52316599	0.99	4.78E-08	NEK5	-0.41	3.20E-02	Brain_Spinal_cord_cervical_c-1
rs17532524	52316599	0.99	4.78E-08	DHRS12	-0.19	3.21E-02	Brain_Cerebellar_Hemisphere
rs17532524	52316599	0.99	4.78E-08	NEK5	-0.22	3.22E-02	Brain_Caudate_basal_ganglia
rs17532524	52316599	0.99	4.78E-08	WDFY2	0.16	3.26E-02	Brain_Cortex
rs17532524	52316599	0.99	4.78E-08	ALG11	-0.25	3.35E-02	Brain_Spinal_cord_cervical_c-1
rs17532524	52316599	0.99	4.78E-08	HNRNPA1L2	0.13	3.42E-02	Whole_Blood
rs17532524	52316599	0.99	4.78E-08	RP11-24B19.4	0.38	3.92E-02	Brain_Hypothalamus
rs17532524	52316599	0.99	4.78E-08	MRPS31P5	-0.16	3.97E-02	Brain_Caudate_basal_ganglia
rs17532524	52316599	0.99	4.78E-08	THSD1	0.27	4.09E-02	Brain_Hippocampus
rs17532524	52316599	0.99	4.78E-08	INTS6	-0.38	4.14E-02	Brain_Substantia_nigra
rs17532524	52316599	0.99	4.78E-08	INTS6	-0.32	4.24E-02	Brain_Hypothalamus
rs17532524	52316599	0.99	4.78E-08	SERPINE3	0.37	4.34E-02	Brain_Cortex
rs17532524	52316599	0.99	4.78E-08	ATP7B	-0.31	4.36E-02	Brain_Putamen_basal_ganglia
rs17532524	52316599	0.99	4.78E-08	CKAP2	-0.24	4.47E-02	Brain_Cerebellar_Hemisphere
rs17532524	52316599	0.99	4.78E-08	INTS6	-0.28	4.49E-02	Brain_Putamen_basal_ganglia

rs17532524	52316599	0.99	4.78E-08	ALG11	-0.17	4.91E-02	Brain_Nucleus_accumbens_basal_ganglia
rs9535747	52322184	0.99	4.78E-08	WDFY2	0.22	1.27E-05	Whole_Blood
rs9535747	52322184	0.99	4.78E-08	WDFY2	0.34	1.41E-04	Brain_Cerebellar_Hemisphere
rs9535747	52322184	0.99	4.78E-08	WDFY2	0.35	8.27E-04	Brain_Cerebellum
rs9535747	52322184	0.99	4.78E-08	WDFY2	0.30	2.18E-03	Brain_Hippocampus
rs9535747	52322184	0.99	4.78E-08	CKAP2	-0.34	2.67E-03	Brain_Cortex
rs9535747	52322184	0.99	4.78E-08	ATP7B	-0.41	3.26E-03	Brain_Cerebellum
rs9535747	52322184	0.99	4.78E-08	CTAGE3P	-0.58	8.49E-03	Brain_Spinal_cord_cervical_c-1
rs9535747	52322184	0.99	4.78E-08	CTAGE3P	-0.43	8.75E-03	Brain_Putamen_basal_ganglia
rs9535747	52322184	0.99	4.78E-08	ATP7B	-0.39	9.87E-03	Brain_Spinal_cord_cervical_c-1
rs9535747	52322184	0.99	4.78E-08	WDFY2	0.27	1.15E-02	Brain_Hypothalamus
rs9535747	52322184	0.99	4.78E-08	WDFY2	0.37	1.43E-02	Brain_Spinal_cord_cervical_c-1
rs9535747	52322184	0.99	4.78E-08	RP11-24B19.3	0.44	1.57E-02	Brain_Amygdala
rs9535747	52322184	0.99	4.78E-08	INTS6	-0.42	1.65E-02	Brain_Hippocampus
rs9535747	52322184	0.99	4.78E-08	DHRS12	-0.26	1.68E-02	Brain_Hypothalamus
rs9535747	52322184	0.99	4.78E-08	WDFY2	0.17	2.28E-02	Brain_Cortex
rs9535747	52322184	0.99	4.78E-08	UTP14C	0.20	2.36E-02	Brain_Cortex
rs9535747	52322184	0.99	4.78E-08	HNRNPA1L2	0.14	2.62E-02	Whole_Blood
rs9535747	52322184	0.99	4.78E-08	NEK5	-0.22	2.66E-02	Brain_Caudate_basal_ganglia
rs9535747	52322184	0.99	4.78E-08	DHRS12	-0.20	2.92E-02	Brain_Cerebellar_Hemisphere
rs9535747	52322184	0.99	4.78E-08	ALG11	-0.25	2.98E-02	Brain_Spinal_cord_cervical_c-1
rs9535747	52322184	0.99	4.78E-08	INTS6	-0.40	3.09E-02	Brain_Substantia_nigra
rs9535747	52322184	0.99	4.78E-08	UTP14C	0.24	3.12E-02	Brain_Amygdala
rs9535747	52322184	0.99	4.78E-08	MRPS31P5	-0.17	3.17E-02	Brain_Caudate_basal_ganglia
rs9535747	52322184	0.99	4.78E-08	THSD1	0.28	3.29E-02	Brain_Hippocampus
rs9535747	52322184	0.99	4.78E-08	ALG11	-0.18	3.91E-02	Brain_Nucleus_accumbens_basal_ganglia
rs9535747	52322184	0.99	4.78E-08	CKAP2	-0.25	3.92E-02	Brain_Cerebellar_Hemisphere
rs9535747	52322184	0.99	4.78E-08	INTS6	-0.32	4.19E-02	Brain_Hypothalamus
rs9535747	52322184	0.99	4.78E-08	NEK5	-0.37	4.67E-02	Brain_Spinal_cord_cervical_c-1
rs73199746	52323602	1.00	4.78E-08	WDFY2	0.22	9.06E-06	Whole_Blood
rs73199746	52323602	1.00	4.78E-08	WDFY2	0.34	1.41E-04	Brain_Cerebellar_Hemisphere
rs73199746	52323602	1.00	4.78E-08	WDFY2	0.35	8.27E-04	Brain_Cerebellum
rs73199746	52323602	1.00	4.78E-08	WDFY2	0.31	1.26E-03	Brain_Hippocampus
rs73199746	52323602	1.00	4.78E-08	ATP7B	-0.41	3.26E-03	Brain_Cerebellum
rs73199746	52323602	1.00	4.78E-08	CKAP2	-0.33	4.96E-03	Brain_Cortex
rs73199746	52323602	1.00	4.78E-08	CTAGE3P	-0.44	7.46E-03	Brain_Putamen_basal_ganglia
rs73199746	52323602	1.00	4.78E-08	CTAGE3P	-0.58	8.49E-03	Brain_Spinal_cord_cervical_c-1
rs73199746	52323602	1.00	4.78E-08	ATP7B	-0.39	9.87E-03	Brain_Spinal_cord_cervical_c-1
rs73199746	52323602	1.00	4.78E-08	WDFY2	0.20	1.10E-02	Brain_Cortex
rs73199746	52323602	1.00	4.78E-08	WDFY2	0.27	1.15E-02	Brain_Hypothalamus
rs73199746	52323602	1.00	4.78E-08	WDFY2	0.37	1.43E-02	Brain_Spinal_cord_cervical_c-1

rs73199746	52323602	1.00	4.78E-08	RP11-24B19.3	0.44	1.57E-02	Brain_Amygdala
rs73199746	52323602	1.00	4.78E-08	DHRS12	-0.26	1.68E-02	Brain_Hypothalamus
rs73199746	52323602	1.00	4.78E-08	MRPS31P5	-0.18	2.15E-02	Brain_Caudate_basal_ganglia
rs73199746	52323602	1.00	4.78E-08	UTP14C	0.21	2.23E-02	Brain_Cortex
rs73199746	52323602	1.00	4.78E-08	SERPINE3	0.41	2.51E-02	Brain_Cortex
rs73199746	52323602	1.00	4.78E-08	DHRS12	-0.20	2.92E-02	Brain_Cerebellar_Hemisphere
rs73199746	52323602	1.00	4.78E-08	ALG11	-0.25	2.98E-02	Brain_Spinal_cord_cervical_c-1
rs73199746	52323602	1.00	4.78E-08	INTS6	-0.40	3.09E-02	Brain_Substantia_nigra
rs73199746	52323602	1.00	4.78E-08	UTP14C	0.24	3.12E-02	Brain_Amygdala
rs73199746	52323602	1.00	4.78E-08	WDFY2	0.21	3.22E-02	Brain_Putamen_basal_ganglia
rs73199746	52323602	1.00	4.78E-08	HNRNPA1L2	0.13	3.49E-02	Whole_Blood
rs73199746	52323602	1.00	4.78E-08	CKAP2	-0.25	3.92E-02	Brain_Cerebellar_Hemisphere
rs73199746	52323602	1.00	4.78E-08	INTS6	-0.32	4.19E-02	Brain_Hypothalamus
rs73199746	52323602	1.00	4.78E-08	NEK5	-0.37	4.67E-02	Brain_Spinal_cord_cervical_c-1
rs9526793	52327020	0.99	4.78E-08	WDFY2	0.22	1.27E-05	Whole_Blood
rs9526793	52327020	0.99	4.78E-08	WDFY2	0.34	1.41E-04	Brain_Cerebellar_Hemisphere
rs9526793	52327020	0.99	4.78E-08	WDFY2	0.35	8.27E-04	Brain_Cerebellum
rs9526793	52327020	0.99	4.78E-08	WDFY2	0.30	2.18E-03	Brain_Hippocampus
rs9526793	52327020	0.99	4.78E-08	CKAP2	-0.34	2.67E-03	Brain_Cortex
rs9526793	52327020	0.99	4.78E-08	ATP7B	-0.41	3.26E-03	Brain_Cerebellum
rs9526793	52327020	0.99	4.78E-08	CTAGE3P	-0.58	8.49E-03	Brain_Spinal_cord_cervical_c-1
rs9526793	52327020	0.99	4.78E-08	CTAGE3P	-0.43	8.75E-03	Brain_Putamen_basal_ganglia
rs9526793	52327020	0.99	4.78E-08	ATP7B	-0.39	9.87E-03	Brain_Spinal_cord_cervical_c-1
rs9526793	52327020	0.99	4.78E-08	WDFY2	0.27	1.15E-02	Brain_Hypothalamus
rs9526793	52327020	0.99	4.78E-08	WDFY2	0.37	1.43E-02	Brain_Spinal_cord_cervical_c-1
rs9526793	52327020	0.99	4.78E-08	RP11-24B19.3	0.44	1.57E-02	Brain_Amygdala
rs9526793	52327020	0.99	4.78E-08	INTS6	-0.42	1.65E-02	Brain_Hippocampus
rs9526793	52327020	0.99	4.78E-08	DHRS12	-0.26	1.68E-02	Brain_Hypothalamus
rs9526793	52327020	0.99	4.78E-08	WDFY2	0.17	2.28E-02	Brain_Cortex
rs9526793	52327020	0.99	4.78E-08	UTP14C	0.20	2.36E-02	Brain_Cortex
rs9526793	52327020	0.99	4.78E-08	HNRNPA1L2	0.14	2.62E-02	Whole_Blood
rs9526793	52327020	0.99	4.78E-08	NEK5	-0.22	2.66E-02	Brain_Caudate_basal_ganglia
rs9526793	52327020	0.99	4.78E-08	DHRS12	-0.20	2.92E-02	Brain_Cerebellar_Hemisphere
rs9526793	52327020	0.99	4.78E-08	ALG11	-0.25	2.98E-02	Brain_Spinal_cord_cervical_c-1
rs9526793	52327020	0.99	4.78E-08	INTS6	-0.40	3.09E-02	Brain_Substantia_nigra
rs9526793	52327020	0.99	4.78E-08	UTP14C	0.24	3.12E-02	Brain_Amygdala
rs9526793	52327020	0.99	4.78E-08	MRPS31P5	-0.17	3.17E-02	Brain_Caudate_basal_ganglia
rs9526793	52327020	0.99	4.78E-08	THSD1	0.28	3.29E-02	Brain_Hippocampus
rs9526793	52327020	0.99	4.78E-08	ALG11	-0.18	3.91E-02	Brain_Nucleus_accumbens_basal_ganglia
rs9526793	52327020	0.99	4.78E-08	CKAP2	-0.25	3.92E-02	Brain_Cerebellar_Hemisphere
rs9526793	52327020	0.99	4.78E-08	INTS6	-0.32	4.19E-02	Brain_Hypothalamus

rs9526793	52327020	0.99	4.78E-08	NEK5	-0.37	4.67E-02	Brain_Spinal_cord_cervical_c-1
rs9535749	52328844	1.00	3.37E-08	WDFY2	0.20	3.34E-05	Whole_Blood
rs9535749	52328844	1.00	3.37E-08	WDFY2	0.34	1.07E-04	Brain_Cerebellar_Hemisphere
rs9535749	52328844	1.00	3.37E-08	WDFY2	0.35	6.92E-04	Brain_Cerebellum
rs9535749	52328844	1.00	3.37E-08	CKAP2	-0.35	2.16E-03	Brain_Cortex
rs9535749	52328844	1.00	3.37E-08	WDFY2	0.30	2.18E-03	Brain_Hippocampus
rs9535749	52328844	1.00	3.37E-08	ATP7B	-0.41	2.73E-03	Brain_Cerebellum
rs9535749	52328844	1.00	3.37E-08	ATP7B	-0.41	5.60E-03	Brain_Spinal_cord_cervical_c-1
rs9535749	52328844	1.00	3.37E-08	CTAGE3P	-0.43	8.75E-03	Brain_Putamen_basal_ganglia
rs9535749	52328844	1.00	3.37E-08	WDFY2	0.27	1.15E-02	Brain_Hypothalamus
rs9535749	52328844	1.00	3.37E-08	CTAGE3P	-0.55	1.42E-02	Brain_Spinal_cord_cervical_c-1
rs9535749	52328844	1.00	3.37E-08	RP11-24B19.3	0.44	1.57E-02	Brain_Amygdala
rs9535749	52328844	1.00	3.37E-08	INTS6	-0.42	1.65E-02	Brain_Hippocampus
rs9535749	52328844	1.00	3.37E-08	DHRS12	-0.26	1.68E-02	Brain_Hypothalamus
rs9535749	52328844	1.00	3.37E-08	ALG11	-0.27	1.68E-02	Brain_Spinal_cord_cervical_c-1
rs9535749	52328844	1.00	3.37E-08	DHRS12	-0.21	1.76E-02	Brain_Cerebellar_Hemisphere
rs9535749	52328844	1.00	3.37E-08	HNRNPA1L2	0.14	1.78E-02	Whole_Blood
rs9535749	52328844	1.00	3.37E-08	WDFY2	0.17	2.29E-02	Brain_Cortex
rs9535749	52328844	1.00	3.37E-08	UTP14C	0.20	2.56E-02	Brain_Cortex
rs9535749	52328844	1.00	3.37E-08	NEK5	-0.22	2.66E-02	Brain_Caudate_basal_ganglia
rs9535749	52328844	1.00	3.37E-08	INTS6	-0.40	3.09E-02	Brain_Substantia_nigra
rs9535749	52328844	1.00	3.37E-08	UTP14C	0.24	3.12E-02	Brain_Amygdala
rs9535749	52328844	1.00	3.37E-08	MRPS31P5	-0.17	3.17E-02	Brain_Caudate_basal_ganglia
rs9535749	52328844	1.00	3.37E-08	THSD1	0.28	3.29E-02	Brain_Hippocampus
rs9535749	52328844	1.00	3.37E-08	ALG11	-0.18	3.91E-02	Brain_Nucleus_accumbens_basal_ganglia
rs9535749	52328844	1.00	3.37E-08	NEK5	-0.38	4.16E-02	Brain_Spinal_cord_cervical_c-1
rs9535749	52328844	1.00	3.37E-08	INTS6	-0.32	4.19E-02	Brain_Hypothalamus
rs9535749	52328844	1.00	3.37E-08	WDFY2	0.31	4.32E-02	Brain_Spinal_cord_cervical_c-1
rs9535749	52328844	1.00	3.37E-08	CKAP2	-0.24	4.66E-02	Brain_Cerebellar_Hemisphere
rs9535750	52330240	1.00	4.78E-08	WDFY2	0.22	1.27E-05	Whole_Blood
rs9535750	52330240	1.00	4.78E-08	WDFY2	0.34	1.41E-04	Brain_Cerebellar_Hemisphere
rs9535750	52330240	1.00	4.78E-08	WDFY2	0.35	8.27E-04	Brain_Cerebellum
rs9535750	52330240	1.00	4.78E-08	WDFY2	0.30	2.18E-03	Brain_Hippocampus
rs9535750	52330240	1.00	4.78E-08	CKAP2	-0.34	2.67E-03	Brain_Cortex
rs9535750	52330240	1.00	4.78E-08	ATP7B	-0.41	3.26E-03	Brain_Cerebellum
rs9535750	52330240	1.00	4.78E-08	CTAGE3P	-0.58	8.49E-03	Brain_Spinal_cord_cervical_c-1
rs9535750	52330240	1.00	4.78E-08	CTAGE3P	-0.43	8.75E-03	Brain_Putamen_basal_ganglia
rs9535750	52330240	1.00	4.78E-08	ATP7B	-0.39	9.87E-03	Brain_Spinal_cord_cervical_c-1
rs9535750	52330240	1.00	4.78E-08	WDFY2	0.27	1.15E-02	Brain_Hypothalamus
rs9535750	52330240	1.00	4.78E-08	WDFY2	0.37	1.43E-02	Brain_Spinal_cord_cervical_c-1
rs9535750	52330240	1.00	4.78E-08	RP11-24B19.3	0.44	1.57E-02	Brain_Amygdala

rs9535750	52330240	1.00	4.78E-08	INTS6	-0.42	1.65E-02	Brain_Hippocampus
rs9535750	52330240	1.00	4.78E-08	DHRS12	-0.26	1.68E-02	Brain_Hypothalamus
rs9535750	52330240	1.00	4.78E-08	WDFY2	0.17	2.28E-02	Brain_Cortex
rs9535750	52330240	1.00	4.78E-08	UTP14C	0.20	2.36E-02	Brain_Cortex
rs9535750	52330240	1.00	4.78E-08	HNRNPA1L2	0.14	2.62E-02	Whole_Blood
rs9535750	52330240	1.00	4.78E-08	NEK5	-0.22	2.66E-02	Brain_Caudate_basal_ganglia
rs9535750	52330240	1.00	4.78E-08	DHRS12	-0.20	2.92E-02	Brain_Cerebellar_Hemisphere
rs9535750	52330240	1.00	4.78E-08	ALG11	-0.25	2.98E-02	Brain_Spinal_cord_cervical_c-1
rs9535750	52330240	1.00	4.78E-08	INTS6	-0.40	3.09E-02	Brain_Substantia_nigra
rs9535750	52330240	1.00	4.78E-08	UTP14C	0.24	3.12E-02	Brain_Amygdala
rs9535750	52330240	1.00	4.78E-08	MRPS31P5	-0.17	3.17E-02	Brain_Caudate_basal_ganglia
rs9535750	52330240	1.00	4.78E-08	THSD1	0.28	3.29E-02	Brain_Hippocampus
rs9535750	52330240	1.00	4.78E-08	ALG11	-0.18	3.91E-02	Brain_Nucleus_accumbens_basal_ganglia
rs9535750	52330240	1.00	4.78E-08	CKAP2	-0.25	3.92E-02	Brain_Cerebellar_Hemisphere
rs9535750	52330240	1.00	4.78E-08	INTS6	-0.32	4.19E-02	Brain_Hypothalamus
rs9535750	52330240	1.00	4.78E-08	NEK5	-0.37	4.67E-02	Brain_Spinal_cord_cervical_c-1
rs9526794	52330268	1.00	4.78E-08	WDFY2	0.21	2.15E-05	Whole_Blood
rs9526794	52330268	1.00	4.78E-08	WDFY2	0.34	1.41E-04	Brain_Cerebellar_Hemisphere
rs9526794	52330268	1.00	4.78E-08	WDFY2	0.35	8.27E-04	Brain_Cerebellum
rs9526794	52330268	1.00	4.78E-08	WDFY2	0.30	2.18E-03	Brain_Hippocampus
rs9526794	52330268	1.00	4.78E-08	CKAP2	-0.34	2.67E-03	Brain_Cortex
rs9526794	52330268	1.00	4.78E-08	ATP7B	-0.41	3.26E-03	Brain_Cerebellum
rs9526794	52330268	1.00	4.78E-08	CTAGE3P	-0.58	8.49E-03	Brain_Spinal_cord_cervical_c-1
rs9526794	52330268	1.00	4.78E-08	CTAGE3P	-0.43	8.75E-03	Brain_Putamen_basal_ganglia
rs9526794	52330268	1.00	4.78E-08	ATP7B	-0.39	9.87E-03	Brain_Spinal_cord_cervical_c-1
rs9526794	52330268	1.00	4.78E-08	WDFY2	0.27	1.15E-02	Brain_Hypothalamus
rs9526794	52330268	1.00	4.78E-08	WDFY2	0.37	1.43E-02	Brain_Spinal_cord_cervical_c-1
rs9526794	52330268	1.00	4.78E-08	RP11-24B19.3	0.44	1.57E-02	Brain_Amygdala
rs9526794	52330268	1.00	4.78E-08	INTS6	-0.42	1.65E-02	Brain_Hippocampus
rs9526794	52330268	1.00	4.78E-08	DHRS12	-0.26	1.68E-02	Brain_Hypothalamus
rs9526794	52330268	1.00	4.78E-08	WDFY2	0.17	2.28E-02	Brain_Cortex
rs9526794	52330268	1.00	4.78E-08	UTP14C	0.20	2.36E-02	Brain_Cortex
rs9526794	52330268	1.00	4.78E-08	NEK5	-0.22	2.66E-02	Brain_Caudate_basal_ganglia
rs9526794	52330268	1.00	4.78E-08	DHRS12	-0.20	2.92E-02	Brain_Cerebellar_Hemisphere
rs9526794	52330268	1.00	4.78E-08	ALG11	-0.25	2.98E-02	Brain_Spinal_cord_cervical_c-1
rs9526794	52330268	1.00	4.78E-08	INTS6	-0.40	3.09E-02	Brain_Substantia_nigra
rs9526794	52330268	1.00	4.78E-08	HNRNPA1L2	0.13	3.12E-02	Whole_Blood
rs9526794	52330268	1.00	4.78E-08	UTP14C	0.24	3.12E-02	Brain_Amygdala
rs9526794	52330268	1.00	4.78E-08	MRPS31P5	-0.17	3.17E-02	Brain_Caudate_basal_ganglia
rs9526794	52330268	1.00	4.78E-08	THSD1	0.28	3.29E-02	Brain_Hippocampus
rs9526794	52330268	1.00	4.78E-08	ALG11	-0.18	3.91E-02	Brain_Nucleus_accumbens_basal_ganglia

rs9526794	52330268	1.00	4.78E-08	CKAP2	-0.25	3.92E-02	Brain_Cerebellar_Hemisphere
rs9526794	52330268	1.00	4.78E-08	INTS6	-0.32	4.19E-02	Brain_Hypothalamus
rs9526794	52330268	1.00	4.78E-08	NEK5	-0.37	4.67E-02	Brain_Spinal_cord_cervical_c-1
rs17532936	52332745	1.00	4.78E-08	WDFY2	0.22	1.27E-05	Whole_Blood
rs17532936	52332745	1.00	4.78E-08	WDFY2	0.34	1.41E-04	Brain_Cerebellar_Hemisphere
rs17532936	52332745	1.00	4.78E-08	WDFY2	0.35	8.27E-04	Brain_Cerebellum
rs17532936	52332745	1.00	4.78E-08	WDFY2	0.30	2.18E-03	Brain_Hippocampus
rs17532936	52332745	1.00	4.78E-08	CKAP2	-0.34	2.67E-03	Brain_Cortex
rs17532936	52332745	1.00	4.78E-08	ATP7B	-0.41	3.26E-03	Brain_Cerebellum
rs17532936	52332745	1.00	4.78E-08	CTAGE3P	-0.58	8.49E-03	Brain_Spinal_cord_cervical_c-1
rs17532936	52332745	1.00	4.78E-08	CTAGE3P	-0.43	8.75E-03	Brain_Putamen_basal_ganglia
rs17532936	52332745	1.00	4.78E-08	ATP7B	-0.39	9.87E-03	Brain_Spinal_cord_cervical_c-1
rs17532936	52332745	1.00	4.78E-08	WDFY2	0.27	1.15E-02	Brain_Hypothalamus
rs17532936	52332745	1.00	4.78E-08	WDFY2	0.37	1.43E-02	Brain_Spinal_cord_cervical_c-1
rs17532936	52332745	1.00	4.78E-08	RP11-24B19.3	0.44	1.57E-02	Brain_Amygdala
rs17532936	52332745	1.00	4.78E-08	INTS6	-0.42	1.65E-02	Brain_Hippocampus
rs17532936	52332745	1.00	4.78E-08	DHRS12	-0.26	1.68E-02	Brain_Hypothalamus
rs17532936	52332745	1.00	4.78E-08	WDFY2	0.17	2.28E-02	Brain_Cortex
rs17532936	52332745	1.00	4.78E-08	UTP14C	0.20	2.36E-02	Brain_Cortex
rs17532936	52332745	1.00	4.78E-08	HNRNPA1L2	0.14	2.62E-02	Whole_Blood
rs17532936	52332745	1.00	4.78E-08	NEK5	-0.22	2.66E-02	Brain_Caudate_basal_ganglia
rs17532936	52332745	1.00	4.78E-08	DHRS12	-0.20	2.92E-02	Brain_Cerebellar_Hemisphere
rs17532936	52332745	1.00	4.78E-08	ALG11	-0.25	2.98E-02	Brain_Spinal_cord_cervical_c-1
rs17532936	52332745	1.00	4.78E-08	INTS6	-0.40	3.09E-02	Brain_Substantia_nigra
rs17532936	52332745	1.00	4.78E-08	UTP14C	0.24	3.12E-02	Brain_Amygdala
rs17532936	52332745	1.00	4.78E-08	MRPS31P5	-0.17	3.17E-02	Brain_Caudate_basal_ganglia
rs17532936	52332745	1.00	4.78E-08	THSD1	0.28	3.29E-02	Brain_Hippocampus
rs17532936	52332745	1.00	4.78E-08	ALG11	-0.18	3.91E-02	Brain_Nucleus_accumbens_basal_ganglia
rs17532936	52332745	1.00	4.78E-08	CKAP2	-0.25	3.92E-02	Brain_Cerebellar_Hemisphere
rs17532936	52332745	1.00	4.78E-08	INTS6	-0.32	4.19E-02	Brain_Hypothalamus
rs17532936	52332745	1.00	4.78E-08	NEK5	-0.37	4.67E-02	Brain_Spinal_cord_cervical_c-1
rs9535751	52333057	1.00	4.78E-08	WDFY2	0.22	1.27E-05	Whole_Blood
rs9535751	52333057	1.00	4.78E-08	WDFY2	0.34	1.41E-04	Brain_Cerebellar_Hemisphere
rs9535751	52333057	1.00	4.78E-08	WDFY2	0.35	8.27E-04	Brain_Cerebellum
rs9535751	52333057	1.00	4.78E-08	WDFY2	0.30	2.18E-03	Brain_Hippocampus
rs9535751	52333057	1.00	4.78E-08	CKAP2	-0.34	2.67E-03	Brain_Cortex
rs9535751	52333057	1.00	4.78E-08	ATP7B	-0.41	3.26E-03	Brain_Cerebellum
rs9535751	52333057	1.00	4.78E-08	CTAGE3P	-0.58	8.49E-03	Brain_Spinal_cord_cervical_c-1
rs9535751	52333057	1.00	4.78E-08	CTAGE3P	-0.43	8.75E-03	Brain_Putamen_basal_ganglia
rs9535751	52333057	1.00	4.78E-08	ATP7B	-0.39	9.87E-03	Brain_Spinal_cord_cervical_c-1
rs9535751	52333057	1.00	4.78E-08	WDFY2	0.27	1.15E-02	Brain_Hypothalamus

rs9535751	52333057	1.00	4.78E-08	WDFY2	0.37	1.43E-02	Brain_Spinal_cord_cervical_c-1
rs9535751	52333057	1.00	4.78E-08	RP11-24B19.3	0.44	1.57E-02	Brain_Amygdala
rs9535751	52333057	1.00	4.78E-08	INTS6	-0.42	1.65E-02	Brain_Hippocampus
rs9535751	52333057	1.00	4.78E-08	DHRS12	-0.26	1.68E-02	Brain_Hypothalamus
rs9535751	52333057	1.00	4.78E-08	WDFY2	0.17	2.28E-02	Brain_Cortex
rs9535751	52333057	1.00	4.78E-08	UTP14C	0.20	2.36E-02	Brain_Cortex
rs9535751	52333057	1.00	4.78E-08	HNRNPA1L2	0.14	2.62E-02	Whole_Blood
rs9535751	52333057	1.00	4.78E-08	NEK5	-0.22	2.66E-02	Brain_Caudate_basal_ganglia
rs9535751	52333057	1.00	4.78E-08	DHRS12	-0.20	2.92E-02	Brain_Cerebellar_Hemisphere
rs9535751	52333057	1.00	4.78E-08	ALG11	-0.25	2.98E-02	Brain_Spinal_cord_cervical_c-1
rs9535751	52333057	1.00	4.78E-08	INTS6	-0.40	3.09E-02	Brain_Substantia_nigra
rs9535751	52333057	1.00	4.78E-08	UTP14C	0.24	3.12E-02	Brain_Amygdala
rs9535751	52333057	1.00	4.78E-08	MRPS31P5	-0.17	3.17E-02	Brain_Caudate_basal_ganglia
rs9535751	52333057	1.00	4.78E-08	THSD1	0.28	3.29E-02	Brain_Hippocampus
rs9535751	52333057	1.00	4.78E-08	ALG11	-0.18	3.91E-02	Brain_Nucleus_accumbens_basal_ganglia
rs9535751	52333057	1.00	4.78E-08	CKAP2	-0.25	3.92E-02	Brain_Cerebellar_Hemisphere
rs9535751	52333057	1.00	4.78E-08	INTS6	-0.32	4.19E-02	Brain_Hypothalamus
rs9535751	52333057	1.00	4.78E-08	NEK5	-0.37	4.67E-02	Brain_Spinal_cord_cervical_c-1
rs9535752	52333283	1.00	4.78E-08	WDFY2	0.22	1.27E-05	Whole_Blood
rs9535752	52333283	1.00	4.78E-08	WDFY2	0.34	1.41E-04	Brain_Cerebellar_Hemisphere
rs9535752	52333283	1.00	4.78E-08	WDFY2	0.35	8.27E-04	Brain_Cerebellum
rs9535752	52333283	1.00	4.78E-08	WDFY2	0.30	2.18E-03	Brain_Hippocampus
rs9535752	52333283	1.00	4.78E-08	CKAP2	-0.34	2.67E-03	Brain_Cortex
rs9535752	52333283	1.00	4.78E-08	ATP7B	-0.41	3.26E-03	Brain_Cerebellum
rs9535752	52333283	1.00	4.78E-08	CTAGE3P	-0.58	8.49E-03	Brain_Spinal_cord_cervical_c-1
rs9535752	52333283	1.00	4.78E-08	CTAGE3P	-0.43	8.75E-03	Brain_Putamen_basal_ganglia
rs9535752	52333283	1.00	4.78E-08	ATP7B	-0.39	9.87E-03	Brain_Spinal_cord_cervical_c-1
rs9535752	52333283	1.00	4.78E-08	WDFY2	0.27	1.15E-02	Brain_Hypothalamus
rs9535752	52333283	1.00	4.78E-08	WDFY2	0.37	1.43E-02	Brain_Spinal_cord_cervical_c-1
rs9535752	52333283	1.00	4.78E-08	RP11-24B19.3	0.44	1.57E-02	Brain_Amygdala
rs9535752	52333283	1.00	4.78E-08	INTS6	-0.42	1.65E-02	Brain_Hippocampus
rs9535752	52333283	1.00	4.78E-08	DHRS12	-0.26	1.68E-02	Brain_Hypothalamus
rs9535752	52333283	1.00	4.78E-08	WDFY2	0.17	2.28E-02	Brain_Cortex
rs9535752	52333283	1.00	4.78E-08	UTP14C	0.20	2.36E-02	Brain_Cortex
rs9535752	52333283	1.00	4.78E-08	HNRNPA1L2	0.14	2.62E-02	Whole_Blood
rs9535752	52333283	1.00	4.78E-08	NEK5	-0.22	2.66E-02	Brain_Caudate_basal_ganglia
rs9535752	52333283	1.00	4.78E-08	DHRS12	-0.20	2.92E-02	Brain_Cerebellar_Hemisphere
rs9535752	52333283	1.00	4.78E-08	ALG11	-0.25	2.98E-02	Brain_Spinal_cord_cervical_c-1
rs9535752	52333283	1.00	4.78E-08	INTS6	-0.40	3.09E-02	Brain_Substantia_nigra
rs9535752	52333283	1.00	4.78E-08	UTP14C	0.24	3.12E-02	Brain_Amygdala
rs9535752	52333283	1.00	4.78E-08	MRPS31P5	-0.17	3.17E-02	Brain_Caudate_basal_ganglia

rs9535752	52333283	1.00	4.78E-08	THSD1	0.28	3.29E-02	Brain_Hippocampus
rs9535752	52333283	1.00	4.78E-08	ALG11	-0.18	3.91E-02	Brain_Nucleus_accumbens_basal_ganglia
rs9535752	52333283	1.00	4.78E-08	CKAP2	-0.25	3.92E-02	Brain_Cerebellar_Hemisphere
rs9535752	52333283	1.00	4.78E-08	INTS6	-0.32	4.19E-02	Brain_Hypothalamus
rs9535752	52333283	1.00	4.78E-08	NEK5	-0.37	4.67E-02	Brain_Spinal_cord_cervical_c-1
rs9535753	52335201	1.00	3.37E-08	WDFY2	0.20	3.34E-05	Whole_Blood
rs9535753	52335201	1.00	3.37E-08	WDFY2	0.34	1.07E-04	Brain_Cerebellar_Hemisphere
rs9535753	52335201	1.00	3.37E-08	WDFY2	0.35	6.92E-04	Brain_Cerebellum
rs9535753	52335201	1.00	3.37E-08	CKAP2	-0.35	2.16E-03	Brain_Cortex
rs9535753	52335201	1.00	3.37E-08	WDFY2	0.30	2.18E-03	Brain_Hippocampus
rs9535753	52335201	1.00	3.37E-08	ATP7B	-0.41	2.73E-03	Brain_Cerebellum
rs9535753	52335201	1.00	3.37E-08	ATP7B	-0.41	5.60E-03	Brain_Spinal_cord_cervical_c-1
rs9535753	52335201	1.00	3.37E-08	CTAGE3P	-0.43	8.75E-03	Brain_Putamen_basal_ganglia
rs9535753	52335201	1.00	3.37E-08	WDFY2	0.27	1.15E-02	Brain_Hypothalamus
rs9535753	52335201	1.00	3.37E-08	CTAGE3P	-0.55	1.42E-02	Brain_Spinal_cord_cervical_c-1
rs9535753	52335201	1.00	3.37E-08	RP11-24B19.3	0.44	1.57E-02	Brain_Amygdala
rs9535753	52335201	1.00	3.37E-08	INTS6	-0.42	1.65E-02	Brain_Hippocampus
rs9535753	52335201	1.00	3.37E-08	DHRS12	-0.26	1.68E-02	Brain_Hypothalamus
rs9535753	52335201	1.00	3.37E-08	ALG11	-0.27	1.68E-02	Brain_Spinal_cord_cervical_c-1
rs9535753	52335201	1.00	3.37E-08	DHRS12	-0.21	1.76E-02	Brain_Cerebellar_Hemisphere
rs9535753	52335201	1.00	3.37E-08	HNRNPA1L2	0.14	1.78E-02	Whole_Blood
rs9535753	52335201	1.00	3.37E-08	WDFY2	0.17	2.29E-02	Brain_Cortex
rs9535753	52335201	1.00	3.37E-08	UTP14C	0.20	2.56E-02	Brain_Cortex
rs9535753	52335201	1.00	3.37E-08	NEK5	-0.22	2.66E-02	Brain_Caudate_basal_ganglia
rs9535753	52335201	1.00	3.37E-08	INTS6	-0.40	3.09E-02	Brain_Substantia_nigra
rs9535753	52335201	1.00	3.37E-08	UTP14C	0.24	3.12E-02	Brain_Amygdala
rs9535753	52335201	1.00	3.37E-08	MRPS31P5	-0.17	3.17E-02	Brain_Caudate_basal_ganglia
rs9535753	52335201	1.00	3.37E-08	THSD1	0.28	3.29E-02	Brain_Hippocampus
rs9535753	52335201	1.00	3.37E-08	ALG11	-0.18	3.91E-02	Brain_Nucleus_accumbens_basal_ganglia
rs9535753	52335201	1.00	3.37E-08	NEK5	-0.38	4.16E-02	Brain_Spinal_cord_cervical_c-1
rs9535753	52335201	1.00	3.37E-08	INTS6	-0.32	4.19E-02	Brain_Hypothalamus
rs9535753	52335201	1.00	3.37E-08	WDFY2	0.31	4.32E-02	Brain_Spinal_cord_cervical_c-1
rs9535753	52335201	1.00	3.37E-08	CKAP2	-0.24	4.66E-02	Brain_Cerebellar_Hemisphere
rs2296029	52335765	0.99	4.78E-08	WDFY2	0.22	1.27E-05	Whole_Blood
rs2296029	52335765	0.99	4.78E-08	WDFY2	0.34	1.41E-04	Brain_Cerebellar_Hemisphere
rs2296029	52335765	0.99	4.78E-08	WDFY2	0.35	8.27E-04	Brain_Cerebellum
rs2296029	52335765	0.99	4.78E-08	WDFY2	0.30	2.18E-03	Brain_Hippocampus
rs2296029	52335765	0.99	4.78E-08	CKAP2	-0.34	2.67E-03	Brain_Cortex
rs2296029	52335765	0.99	4.78E-08	ATP7B	-0.41	3.26E-03	Brain_Cerebellum
rs2296029	52335765	0.99	4.78E-08	CTAGE3P	-0.58	8.49E-03	Brain_Spinal_cord_cervical_c-1
rs2296029	52335765	0.99	4.78E-08	CTAGE3P	-0.43	8.75E-03	Brain_Putamen_basal_ganglia

rs2296029	52335765	0.99	4.78E-08	ATP7B	-0.39	9.87E-03	Brain_Spinal_cord_cervical_c-1
rs2296029	52335765	0.99	4.78E-08	WDFY2	0.27	1.15E-02	Brain_Hypothalamus
rs2296029	52335765	0.99	4.78E-08	WDFY2	0.37	1.43E-02	Brain_Spinal_cord_cervical_c-1
rs2296029	52335765	0.99	4.78E-08	RP11-24B19.3	0.44	1.57E-02	Brain_Amygdala
rs2296029	52335765	0.99	4.78E-08	INTS6	-0.42	1.65E-02	Brain_Hippocampus
rs2296029	52335765	0.99	4.78E-08	DHRS12	-0.26	1.68E-02	Brain_Hypothalamus
rs2296029	52335765	0.99	4.78E-08	WDFY2	0.17	2.28E-02	Brain_Cortex
rs2296029	52335765	0.99	4.78E-08	UTP14C	0.20	2.36E-02	Brain_Cortex
rs2296029	52335765	0.99	4.78E-08	HNRNPA1L2	0.14	2.62E-02	Whole_Blood
rs2296029	52335765	0.99	4.78E-08	NEK5	-0.22	2.66E-02	Brain_Caudate_basal_ganglia
rs2296029	52335765	0.99	4.78E-08	DHRS12	-0.20	2.92E-02	Brain_Cerebellar_Hemisphere
rs2296029	52335765	0.99	4.78E-08	ALG11	-0.25	2.98E-02	Brain_Spinal_cord_cervical_c-1
rs2296029	52335765	0.99	4.78E-08	INTS6	-0.40	3.09E-02	Brain_Substantia_nigra
rs2296029	52335765	0.99	4.78E-08	UTP14C	0.24	3.12E-02	Brain_Amygdala
rs2296029	52335765	0.99	4.78E-08	MRPS31P5	-0.17	3.17E-02	Brain_Caudate_basal_ganglia
rs2296029	52335765	0.99	4.78E-08	THSD1	0.28	3.29E-02	Brain_Hippocampus
rs2296029	52335765	0.99	4.78E-08	ALG11	-0.18	3.91E-02	Brain_Nucleus_accumbens_basal_ganglia
rs2296029	52335765	0.99	4.78E-08	CKAP2	-0.25	3.92E-02	Brain_Cerebellar_Hemisphere
rs2296029	52335765	0.99	4.78E-08	INTS6	-0.32	4.19E-02	Brain_Hypothalamus
rs2296029	52335765	0.99	4.78E-08	NEK5	-0.37	4.67E-02	Brain_Spinal_cord_cervical_c-1
rs9535756	52339750	1.00	4.78E-08	WDFY2	0.22	1.23E-05	Whole_Blood
rs9535756	52339750	1.00	4.78E-08	WDFY2	0.34	1.41E-04	Brain_Cerebellar_Hemisphere
rs9535756	52339750	1.00	4.78E-08	WDFY2	0.35	8.27E-04	Brain_Cerebellum
rs9535756	52339750	1.00	4.78E-08	WDFY2	0.30	2.18E-03	Brain_Hippocampus
rs9535756	52339750	1.00	4.78E-08	CKAP2	-0.34	2.67E-03	Brain_Cortex
rs9535756	52339750	1.00	4.78E-08	ATP7B	-0.41	3.26E-03	Brain_Cerebellum
rs9535756	52339750	1.00	4.78E-08	CTAGE3P	-0.58	8.49E-03	Brain_Spinal_cord_cervical_c-1
rs9535756	52339750	1.00	4.78E-08	CTAGE3P	-0.43	8.75E-03	Brain_Putamen_basal_ganglia
rs9535756	52339750	1.00	4.78E-08	ATP7B	-0.39	9.87E-03	Brain_Spinal_cord_cervical_c-1
rs9535756	52339750	1.00	4.78E-08	WDFY2	0.27	1.15E-02	Brain_Hypothalamus
rs9535756	52339750	1.00	4.78E-08	WDFY2	0.37	1.43E-02	Brain_Spinal_cord_cervical_c-1
rs9535756	52339750	1.00	4.78E-08	RP11-24B19.3	0.44	1.57E-02	Brain_Amygdala
rs9535756	52339750	1.00	4.78E-08	INTS6	-0.42	1.65E-02	Brain_Hippocampus
rs9535756	52339750	1.00	4.78E-08	DHRS12	-0.26	1.68E-02	Brain_Hypothalamus
rs9535756	52339750	1.00	4.78E-08	WDFY2	0.17	2.28E-02	Brain_Cortex
rs9535756	52339750	1.00	4.78E-08	HNRNPA1L2	0.14	2.31E-02	Whole_Blood
rs9535756	52339750	1.00	4.78E-08	UTP14C	0.20	2.36E-02	Brain_Cortex
rs9535756	52339750	1.00	4.78E-08	NEK5	-0.22	2.66E-02	Brain_Caudate_basal_ganglia
rs9535756	52339750	1.00	4.78E-08	DHRS12	-0.20	2.92E-02	Brain_Cerebellar_Hemisphere
rs9535756	52339750	1.00	4.78E-08	ALG11	-0.25	2.98E-02	Brain_Spinal_cord_cervical_c-1
rs9535756	52339750	1.00	4.78E-08	INTS6	-0.40	3.09E-02	Brain_Substantia_nigra

rs9535756	52339750	1.00	4.78E-08	UTP14C	0.24	3.12E-02	Brain_Amygdala
rs9535756	52339750	1.00	4.78E-08	MRPS31P5	-0.17	3.17E-02	Brain_Caudate_basal_ganglia
rs9535756	52339750	1.00	4.78E-08	THSD1	0.28	3.29E-02	Brain_Hippocampus
rs9535756	52339750	1.00	4.78E-08	ALG11	-0.18	3.91E-02	Brain_Nucleus_accumbens_basal_ganglia
rs9535756	52339750	1.00	4.78E-08	CKAP2	-0.25	3.92E-02	Brain_Cerebellar_Hemisphere
rs9535756	52339750	1.00	4.78E-08	INTS6	-0.32	4.19E-02	Brain_Hypothalamus
rs9535756	52339750	1.00	4.78E-08	NEK5	-0.37	4.67E-02	Brain_Spinal_cord_cervical_c-1

Figure S1.1. MYHAT Pearson Cross-Sectional Correlation Between Cognitive Domains at Baseline

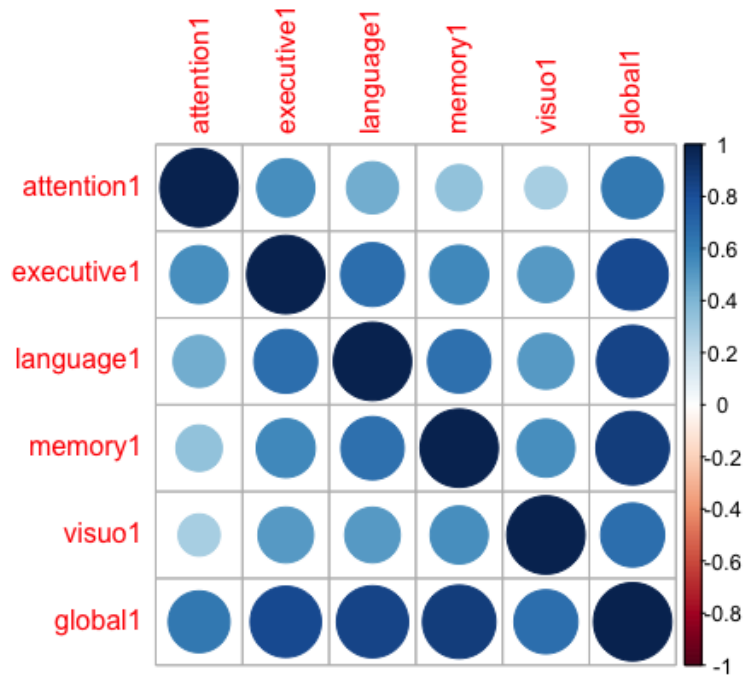


Figure S1.2. MoVIES Pearson Cross-Sectional Correlation Between Cognitive Domains at Baseline.

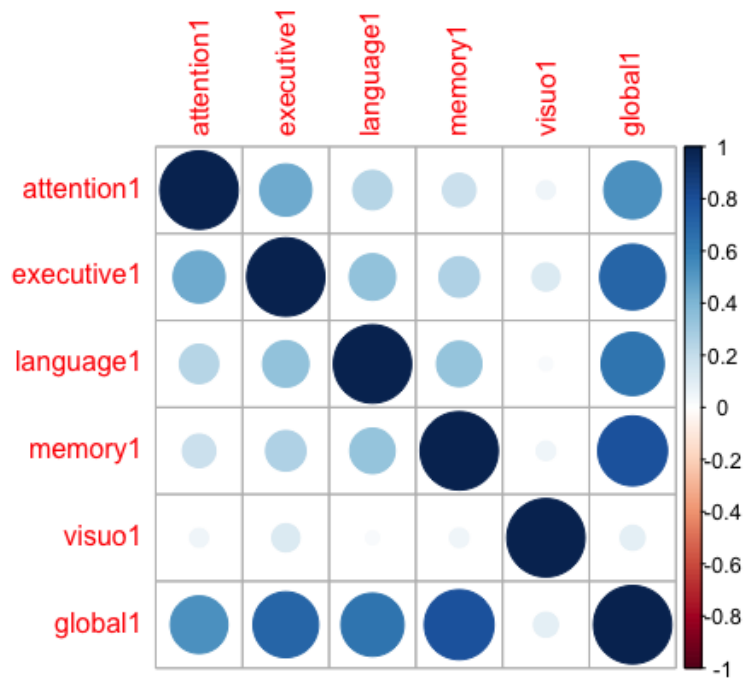


Figure S2. Quantile-Quantile Plots along with λ -values for Different cognitive Domains

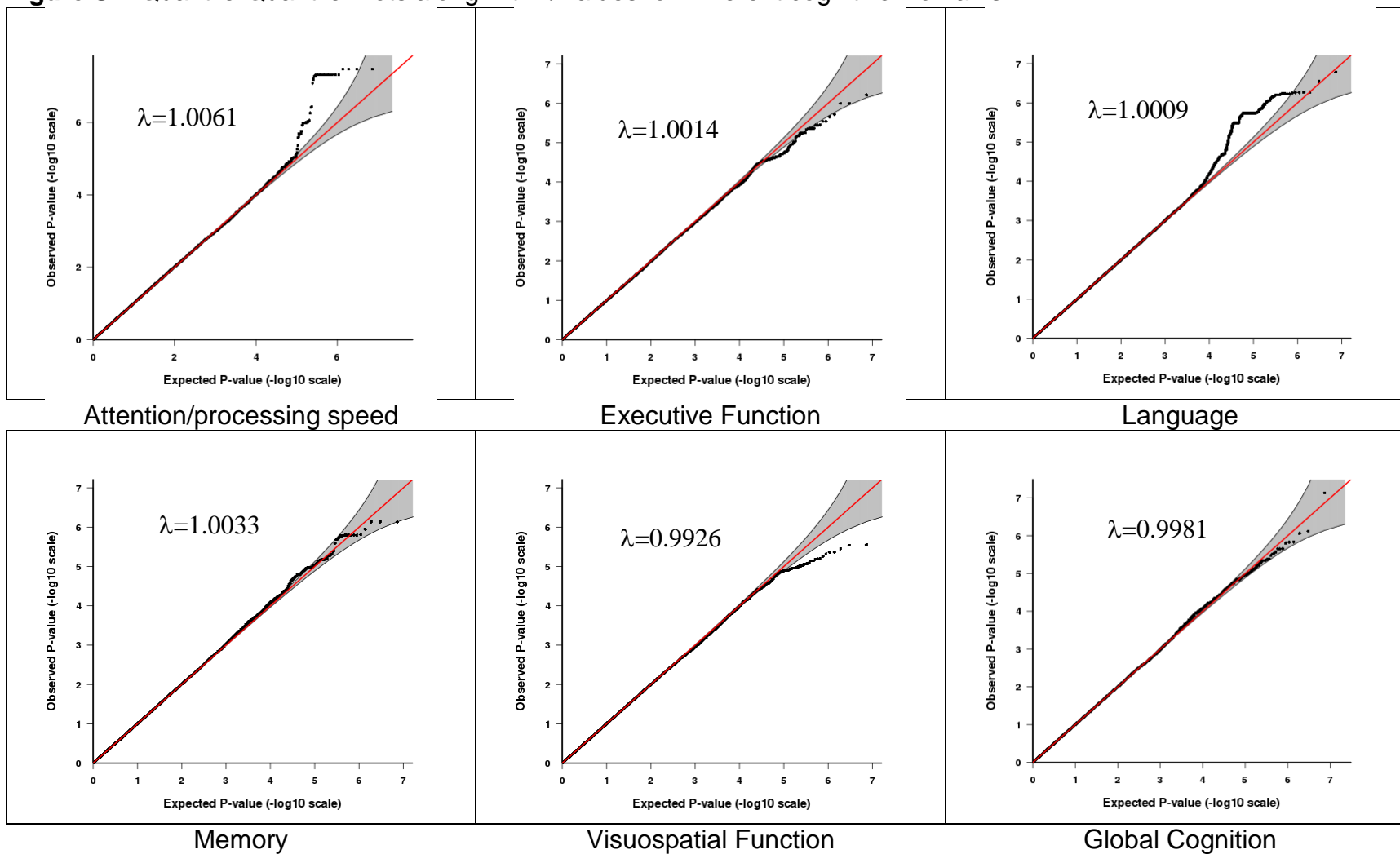


Figure S3.1. Manhattan Plot for the Attention/Processing Speed Domain

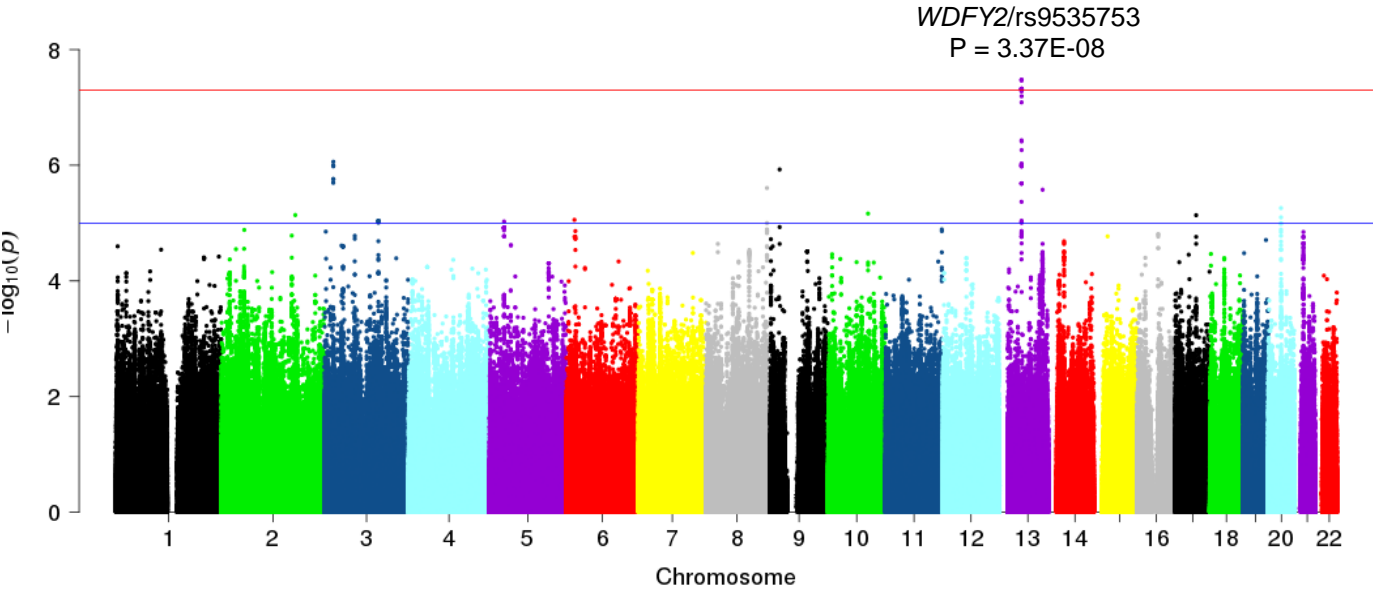


Figure S3.2. Manhattan Plot for the Executive Function Domain

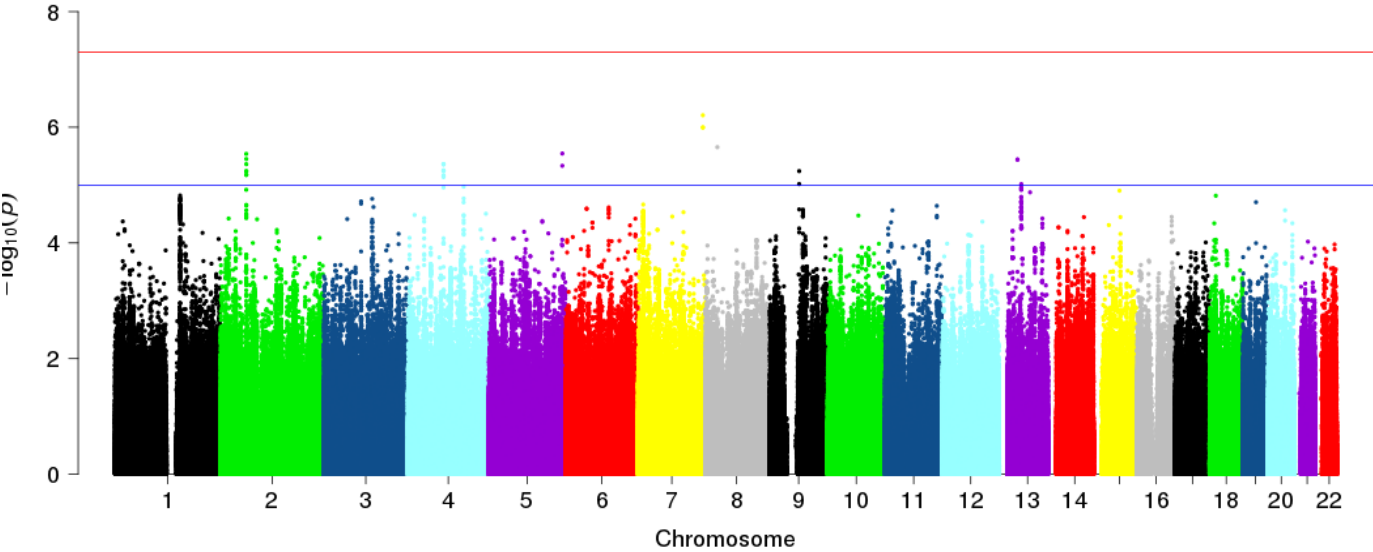


Figure S3.3. Manhattan Plot for the Language Domain

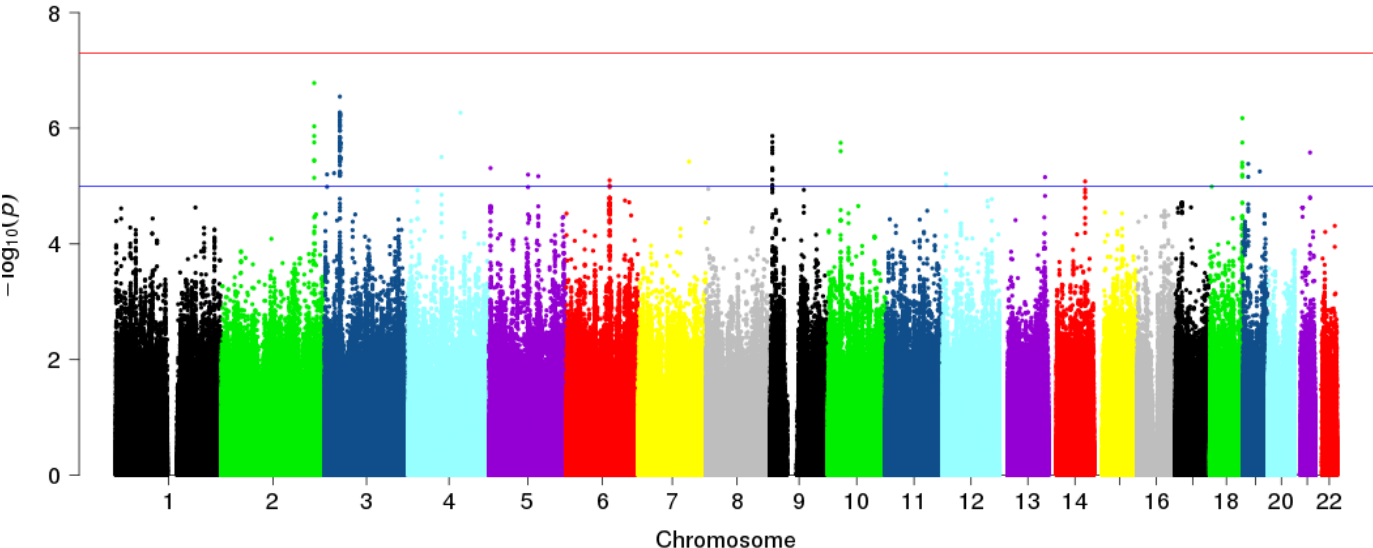


Figure S3.4. Manhattan Plot for the Memory Domain

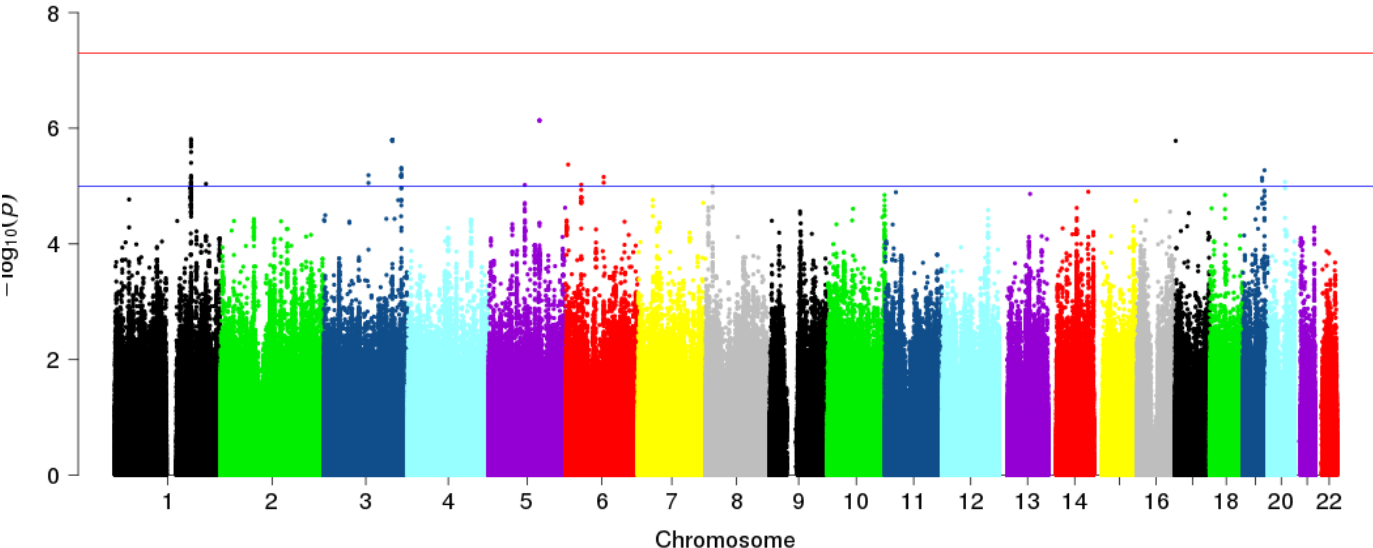


Figure S3.5. Manhattan Plot for the Language Domain

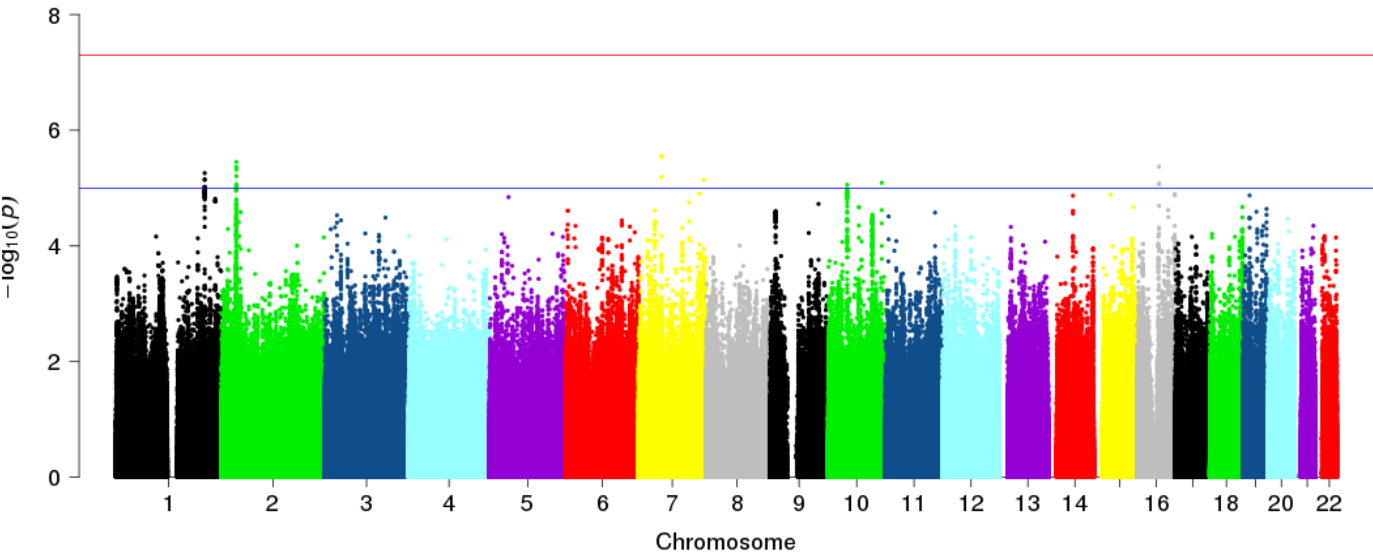


Figure S3.6. Manhattan Plot for the Global Cognition

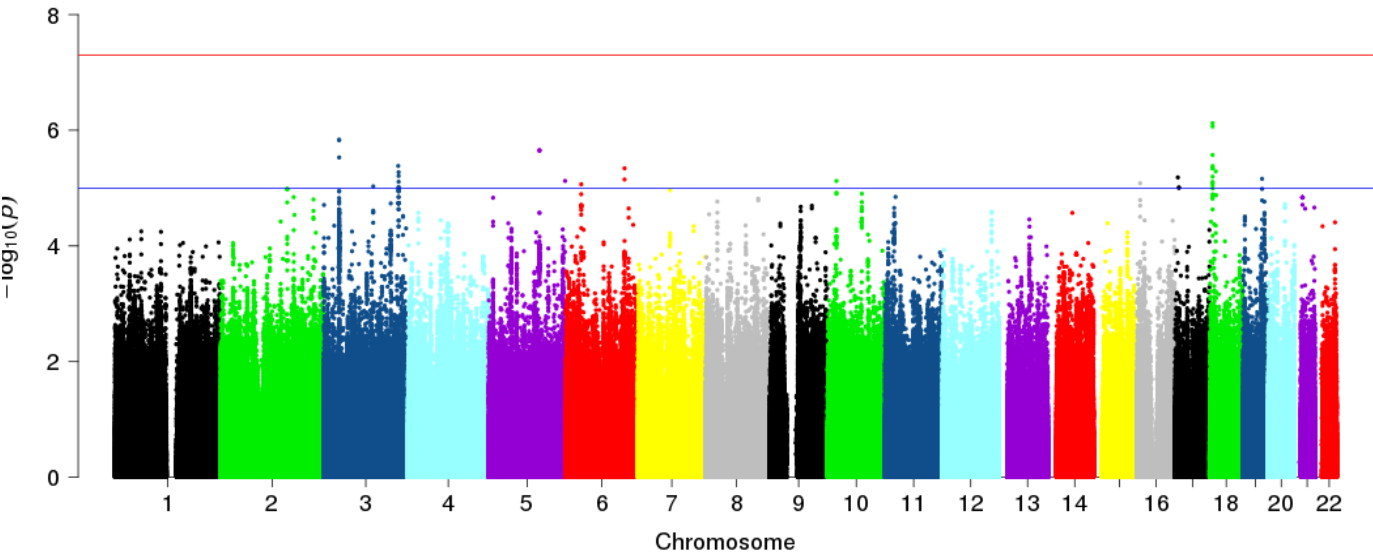


Figure S4. GTEx Tissue Specific Gene Expression of *WDFY2*

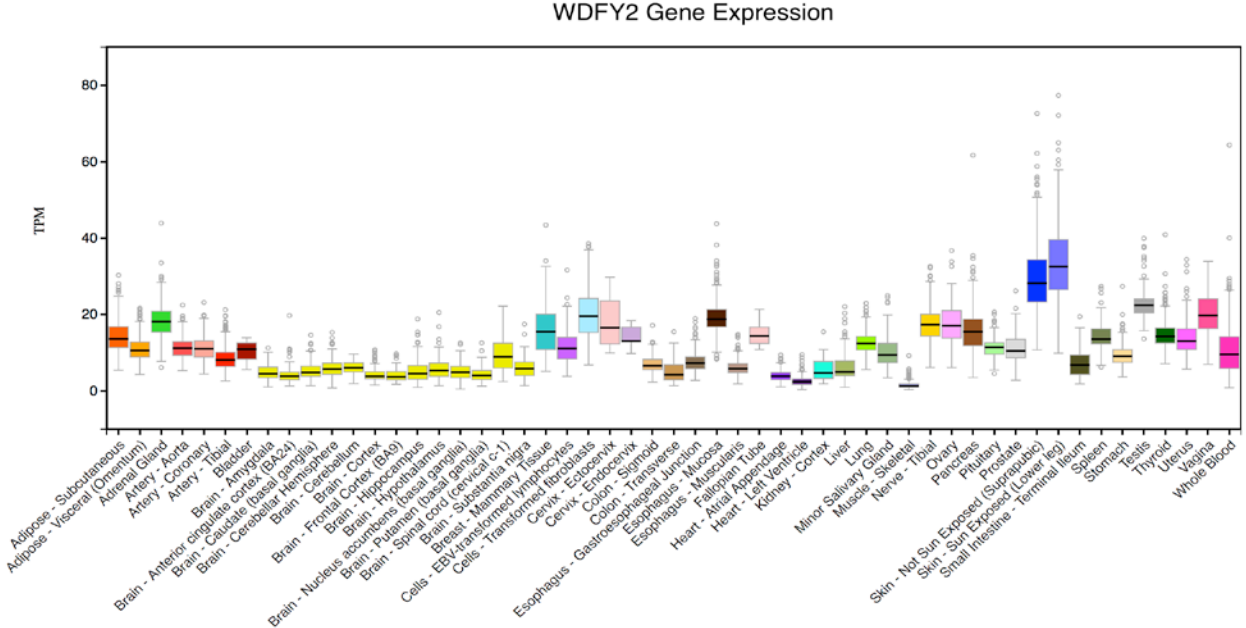


Figure S5. Gene expression of *WDFY2* in mouse and human brain cell types (Brain RNA-Seq <http://www.brainrnaseq.org/>)

