

## Evaluation of (–)-epicatechin metabolites as recovery biomarker of dietary flavan-3-ol intake

Javier I. Ottaviani<sup>1</sup>, Reedmond Fong<sup>2</sup>, Jennifer Kimball<sup>2</sup>, Jodi L. Ensunsa<sup>2</sup>, Nicola Gray<sup>3</sup>, Anna Vogiatzoglou<sup>4</sup>, Abigail Britten<sup>5</sup>, Debora Lucarelli<sup>5</sup>, Robert Luben<sup>6</sup>, Philip B. Grace<sup>7</sup>, Deborah H. Mawson<sup>7</sup>, Amy Tym<sup>7</sup>, Antonia Wierzbicki<sup>7</sup>, A. David Smith<sup>8</sup>, Nicholas J. Wareham<sup>5</sup>, Nita G. Forouhi<sup>5</sup>, Kay Khaw<sup>6</sup>, Hagen Schroeter<sup>1</sup>, Gunter G. C. Kuhnle<sup>3,6,\*</sup>

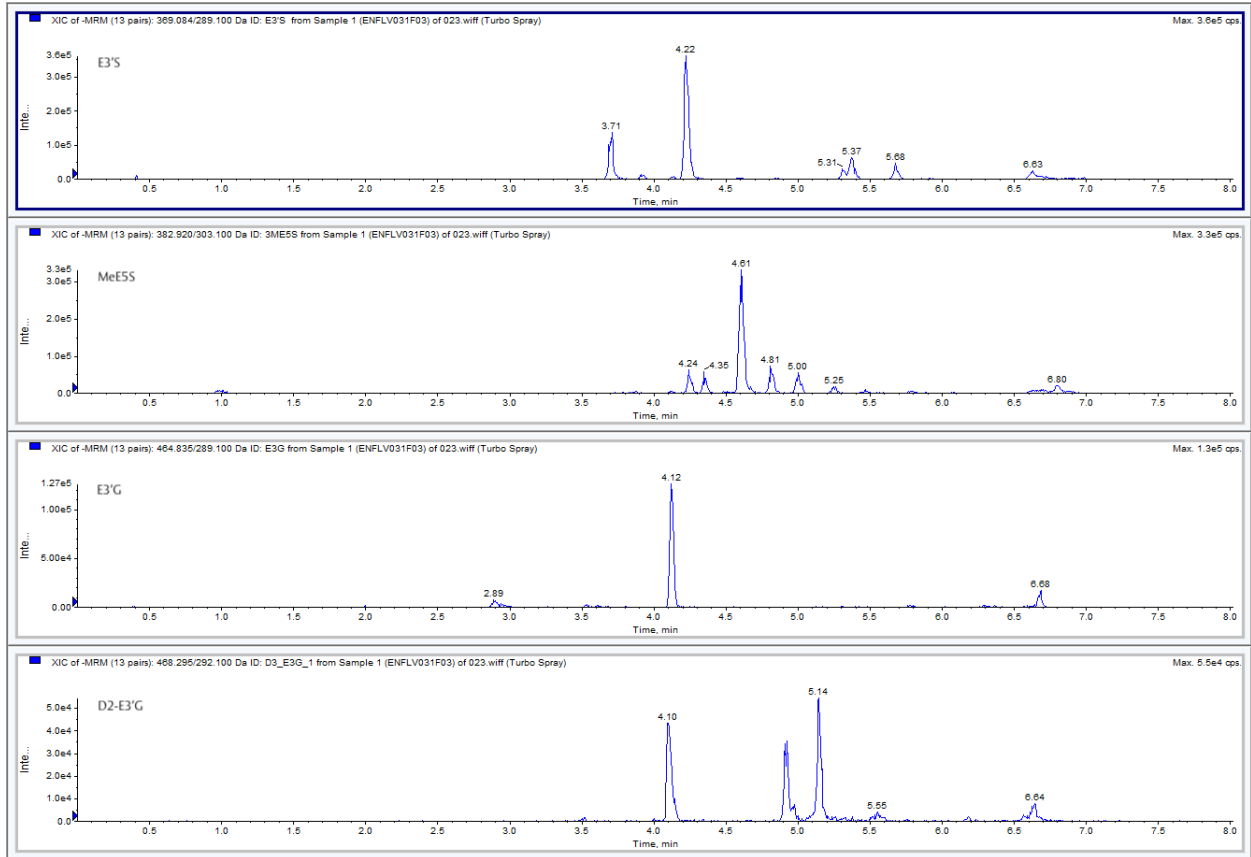
<sup>1</sup>Mars, Inc., McLean, VA; <sup>2</sup>Department of Nutrition, UC Davis, CA; <sup>3</sup>Department of Food and Nutritional Sciences, University of Reading, UK; <sup>4</sup>School of Life Sciences, Coventry University, UK; <sup>5</sup>MRC Epidemiology Unit, University of Cambridge, UK; <sup>6</sup>Department of Public Health and Primary Care, University of Cambridge, UK; <sup>7</sup> LGC, Newmarket Road, Fordham, UK;

<sup>8</sup>OPTIMA Department of Pharmacology, University of Oxford, UK

\*Corresponding author: Gunter G. C. Kuhnle; Department of Food & Nutritional Sciences, University of Reading, Reading RG6 6UR, UK. Telephone: +44 118 378 7723; Email:

[g.g.kuhnle@reading.ac.uk](mailto:g.g.kuhnle@reading.ac.uk)

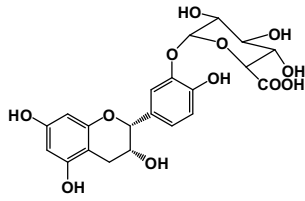
# Evaluation of SREM as nutritional biomarker – Supplemental Material



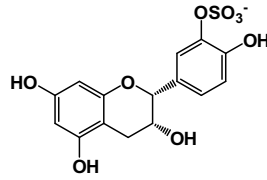
Supplemental Figure 1: Typical chromatogram of a spot urine sample of EPIC Norfolk.

Evaluation of SREM as nutritional biomarker – Supplemental Material

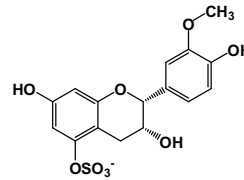
(-)-epicatechin-3'- $\beta$ -D-glucuronide (E3'G)



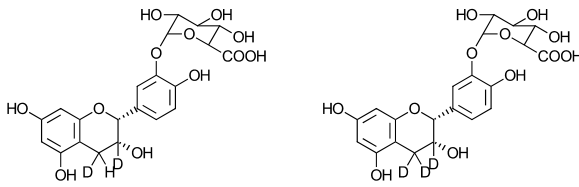
(-)-epicatechin-3'-sulfate (E3'S)



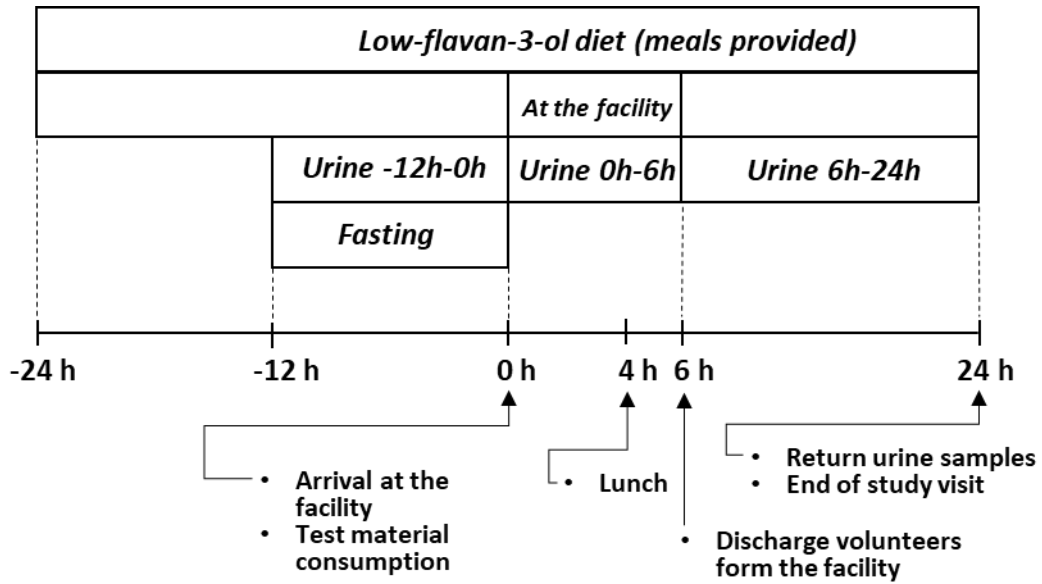
3'-O-methyl(-)-epicatechin-5-sulfate 3ME5S



D<sub>2</sub>/D<sub>3</sub> epicatechin-3'- $\beta$ -D-glucuronide; 50:50 mix (D<sub>2</sub>/D<sub>3</sub>E3'G)

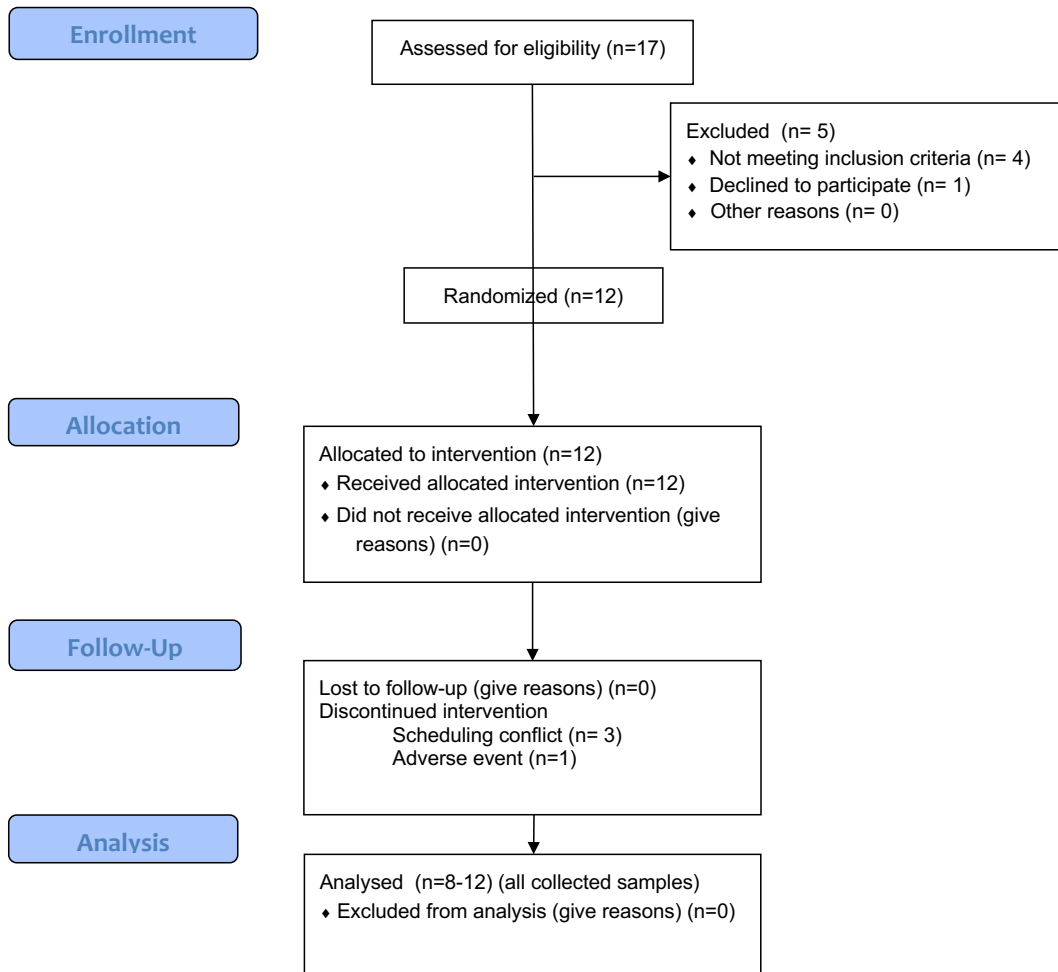


Supplemental Figure 2: Structures of SREM<sub>B</sub> (top row) and internal standard mix (bottom row)



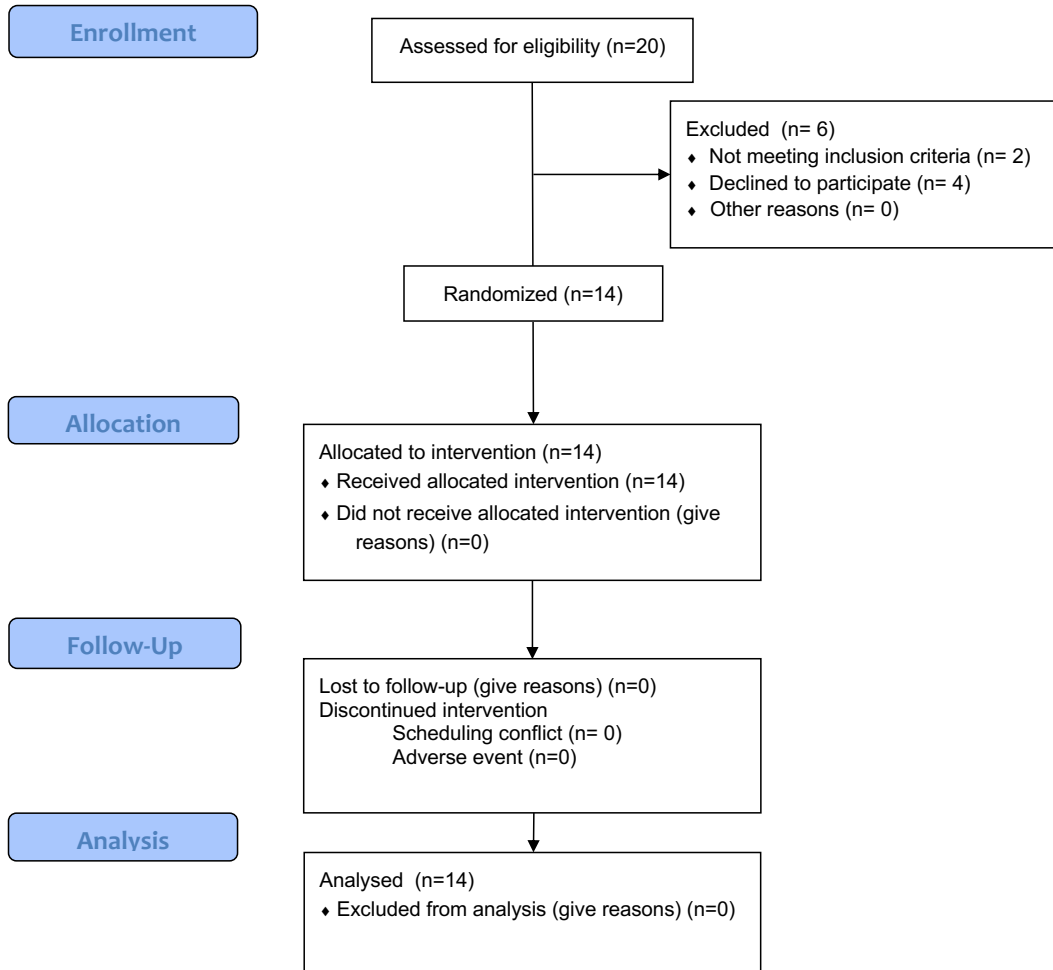
Supplemental Figure 3: Scheme depicting the different events and steps involved in each study visit of the dietary intervention studies conducted, including Specificity Study, Intake escalation Study and Inter-individual variability study. These events were repeated 8 times, 4 times and 2 times for the Specificity Study, Intake escalation Study and Inter-individual variability study, respectively. Study visits were scheduled once a week, but never than 3 days apart.

Evaluation of SREM as nutritional biomarker – Supplemental Material



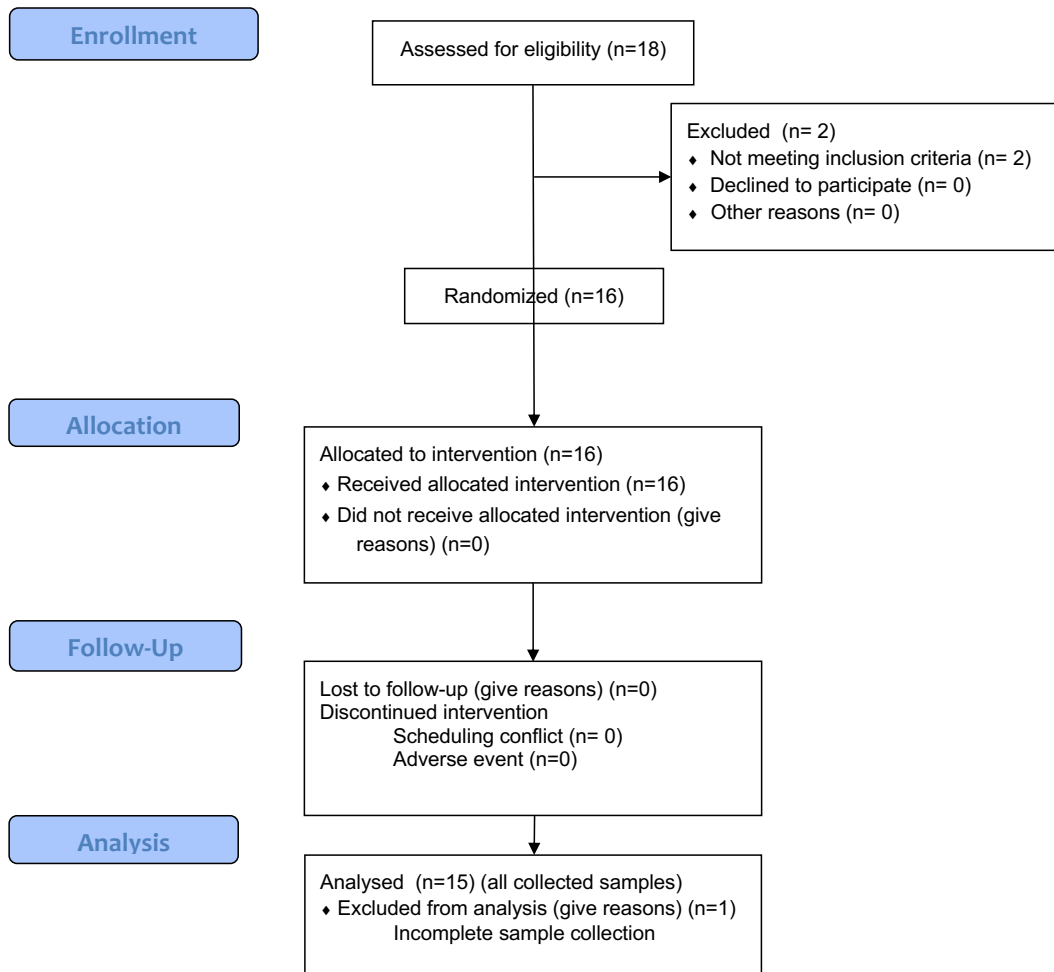
Supplemental Figure 4: Participant flow chart for the specificity study.

Evaluation of SREM as nutritional biomarker – Supplemental Material



Supplemental Figure 5: Participant flow chart for the intake-response study.

Evaluation of SREM as nutritional biomarker – Supplemental Material



Supplemental Figure 6: Participant flow chart for the intra-individual variability study.