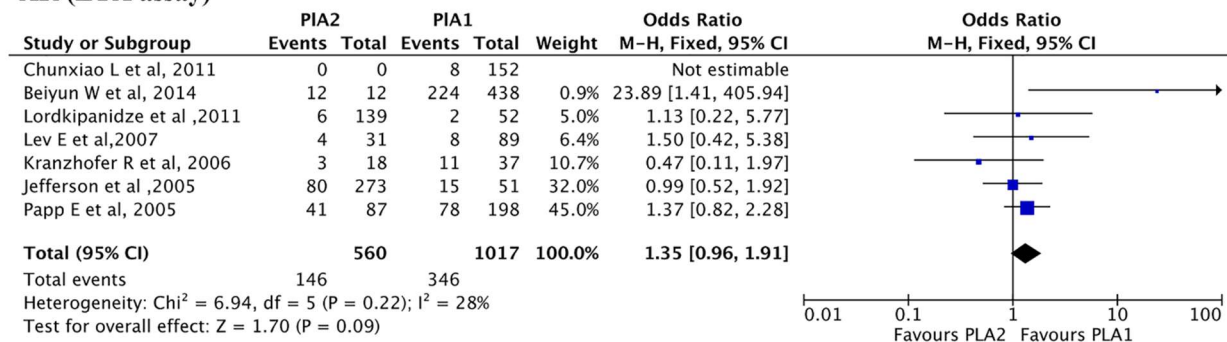


**Association among PLA1/A2 gene polymorphism, laboratory aspirin resistance and clinical outcomes in patients with coronary artery disease: An updated meta-analysis**

Jing Wang, Jie Liu, Yaqing Zhou, Fei Wang, Ke Xu, Deyu Kong, Jianling Bai, Jun Chen, Xiaoxuan Gong, Haoyu Meng, Chunjian Li

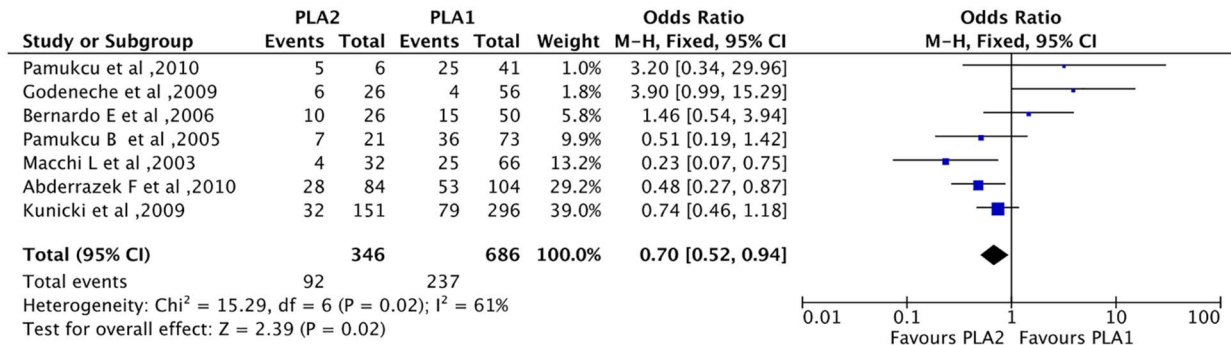
**AR (LTA assay)**



**Supplementary Figure 1.** Subgroup analysis of LTA.

Symbols and conventions are the same as in Figure 2. This meta-analysis shows no significant change in the incidence of LTA-determined AR of patients carrying the PIA2 allele over those carrying PIA1 allele. The overall OR is 1.35 (P=0.09). Note that the p-value mentioned here is the p-value for Z test. LTA, light transmittance aggregation.

### AR (PFA-100 assay)



### Supplementary Figure 2. Subgroup analysis of PFA-100.

Symbols and conventions are the same as in Figure 2. This meta-analysis shows a significant overall decrease in the incidence of PFA-determined AR of patients carrying the PLA2 allele over those carrying PLA1 allele. The overall OR is 0.7 (P=0.02). Note that the p-value mentioned here is the p-value for Z test. PFA-100, platelet function analyzer 100.