

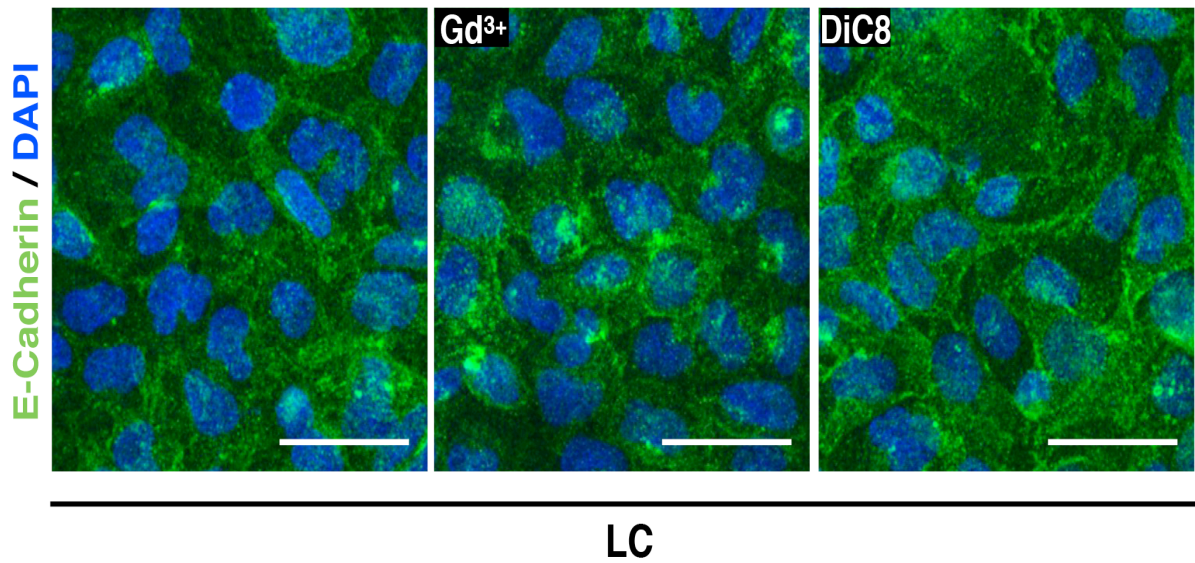
Supplemental Materials

Molecular Biology of the Cell

Amaya et al.

Supplemental figure legends

Supl Fig. 1. In LC cultured cells E-cadherin is not assembled at the cell periphery after Gd^{3+} or DiC8 treatment. MDCK cells cultured in LC were incubated for 2 h with 100 μM Gd^{3+} or 0.5 mM DiC8. Immunofluorescence was done with an antibody against E-cadherin and the nuclei were stained with DAPI. Bars, 30 μm .



Supl. Fig.2. In the LC condition ZO-2 has a higher turnover rate that in monolayers cultured in NC. MDCK monolayers cultured in NC or LC were transfected HA-cZO-2 and after 6 h the cells were incubated in the presence of 30 μ M cycloheximide for the indicated times (h). Upper panel, Western blot done with antibodies against HA and actin. Upper panel, representative image of three independent experiments. Lower left panel, quantitative analysis. Statistical analysis done with a Two-way ANOVA followed by Bonferroni's test. **** $p < 0.0001$. Right panel, measured half-lives are 7 and 19.7 h for LC and NC condition, respectively.

