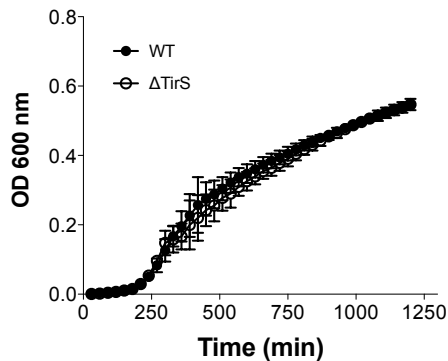
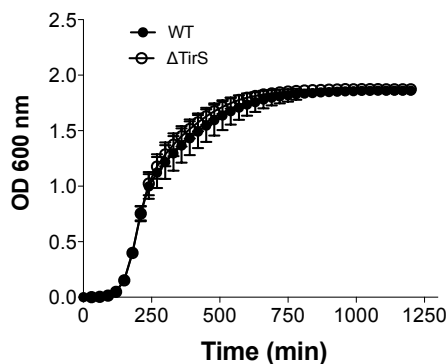
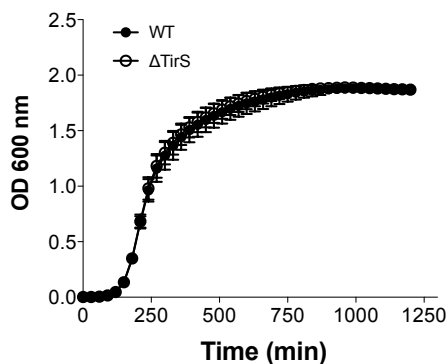
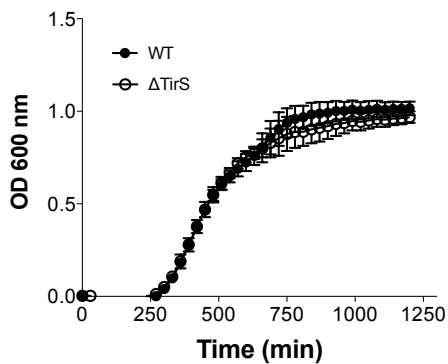
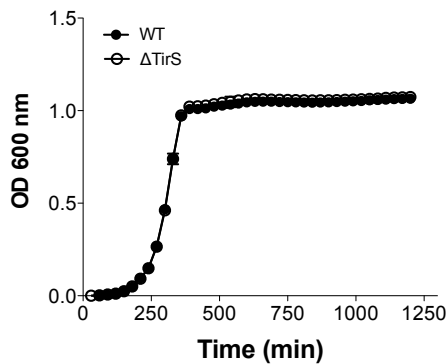


**Supplementary Fig. 1.** Inhibition of TLR2-induced NF- $\kappa$ B activation by TirS is comparable to inhibition mediated by DN-hMyD88 or addition of a TLR2 antagonist SSL3. Untreated control cells were arbitrary set as one, and the luciferase activity in the treated cells is represented as fold induction. \*\*\* $P$ <0.001.

**DMEM 10% FBS****THB****BHI****DMEM 1% casaminoacids****RPMI 1% casaminoacids**

**Supplementary Fig. 2.** Growth curve of *S. aureus* MSSA476 (WT) and the isogenic mutant MSSA476  $\Delta tirS$  ( $\Delta TirS$ ) in different media.