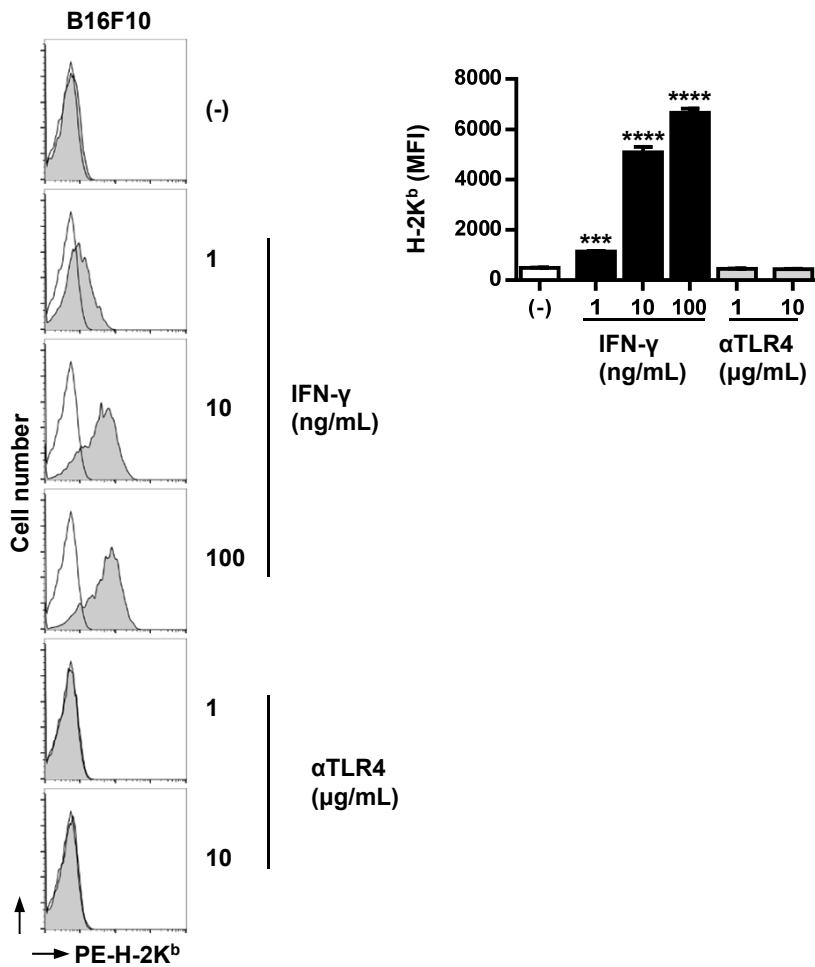


Supplementary figure 1



Supplementary Figure 1

B16F10 cells (5×10^4) were cultured on 48-well plates overnight in 500 μ L culture medium and stimulated with the anti-TLR4 mAb or IFN- γ for 24 h. The cells were harvested in PBS containing 1 mM EDTA, stained with a PE-conjugated anti-H-2K^b mAb, and analyzed by FACS. Open histograms indicate staining without anti-H-2K^b mAb. Fluorescence intensity is expressed as the mean \pm SD of triplicate cultures. One-way ANOVA with the Tukey *post hoc* test; ***P < 0.001, ****P < 0.0001 (*vs.* control). Similar results were obtained from two independent experiments.