

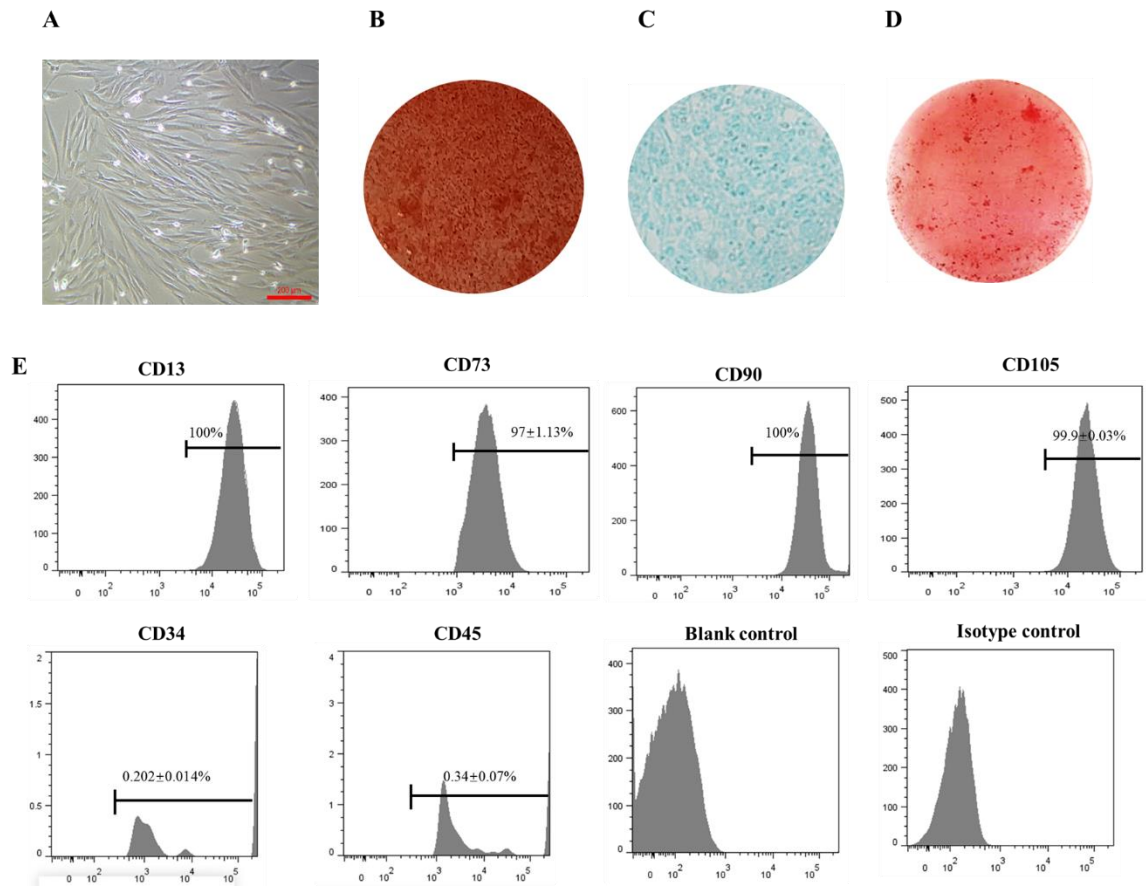
Supplemental Fig. 1: A: The cellular morphology of hWJ-MSCs. B: Alizarin red staining of hWJ-MSCs. C: Alcian blue staining of hWJ-MSCs. D: Oil red O staining of hWJ-MSCs. E: The positive markers, including CD13, CD73, CD90, and CD105, and negative markers CD34 and CD45 of hWJ-MSCs using flow cytometry.

Supplemental Fig. 2: The statistic results of CCK-8 analysis.

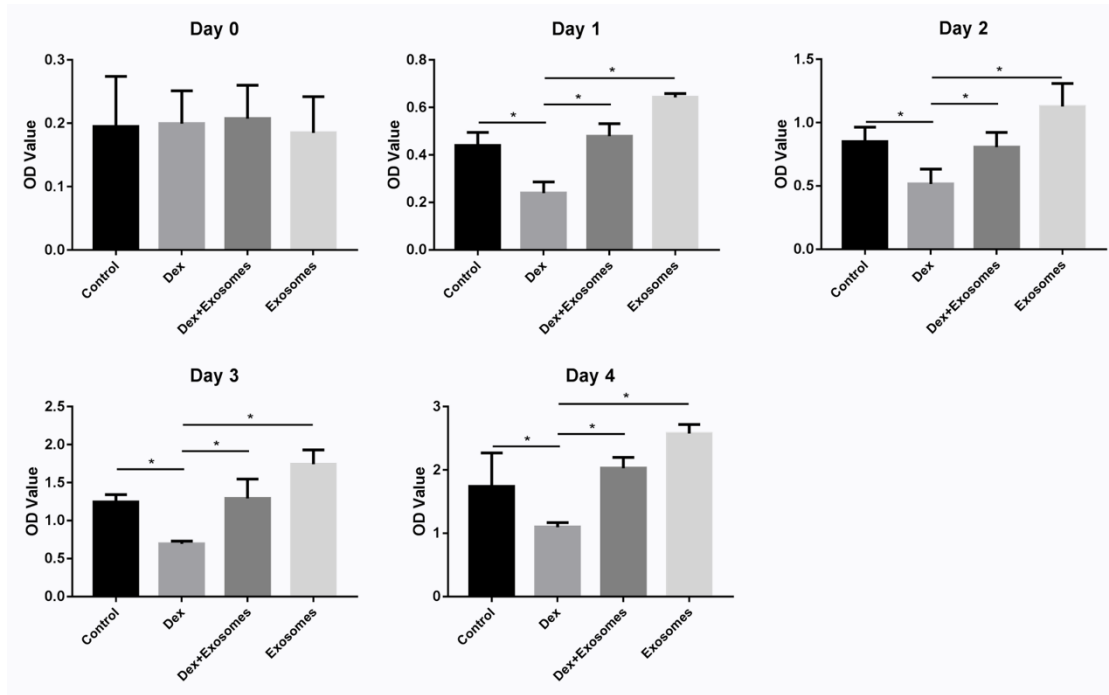
Supplemental Fig. 3: The statistic results of Edu staining.

Supplemental Fig. 4: The statistic results of annexin V-FITC/PI double staining with flow-cytometric analysis.

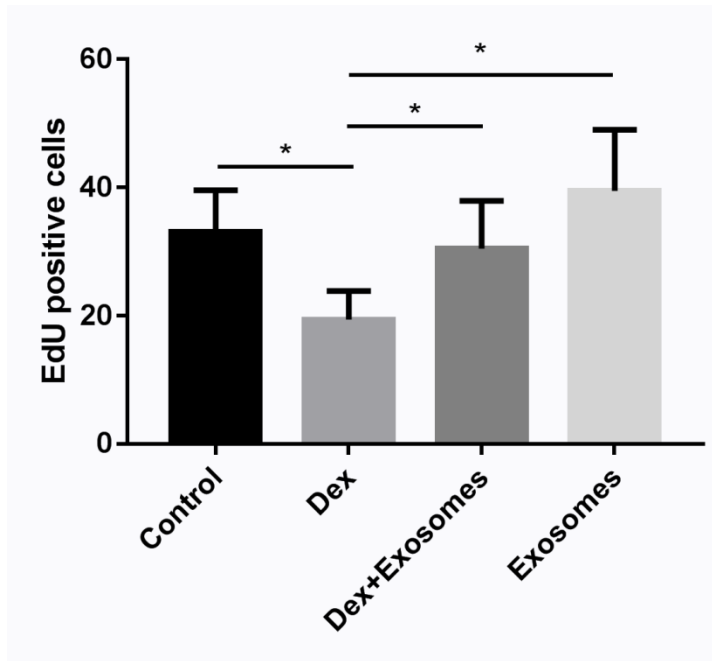
Sup Fig.1



Sup Fig.2



Sup Fig.3



Sup Fig.4

