

## Supplementary Online Content

Sebastian NT, Tan Y, Miller ED, et al. Association of liver-directed local therapy with overall survival in adults with metastatic intrahepatic cholangiocarcinoma. *JAMA Netw Open*. 2019;2(9):e1911154. doi:10.1001/jamanetworkopen.2019.11154

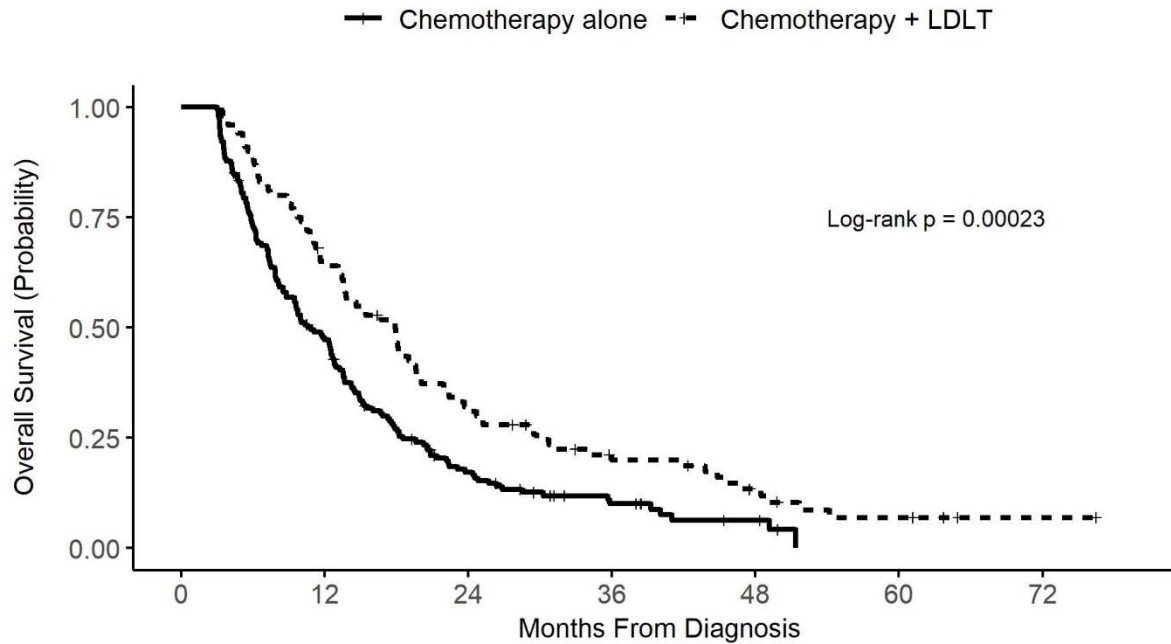
**eFigure.** Sequential Landmark Kaplan-Meier Curves, Stratified by Receipt of Liver-Directed Local Therapy (LDLT)

**eTable.** Patient and Disease Characteristics of the Propensity Matched Cohort, Stratified by Receipt of Liver-Directed Local Therapy (LDLT)

This supplementary material has been provided by the authors to give readers additional information about their work.

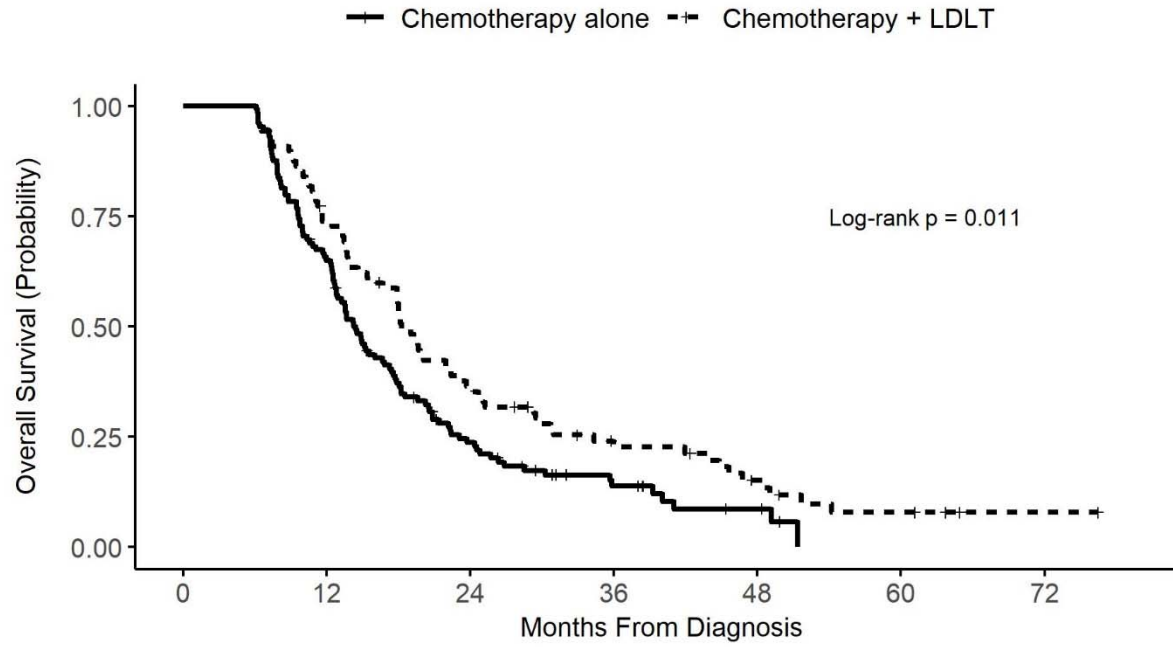
**eFigure.** Sequential Landmark Kaplan-Meier Curves, Stratified by Receipt of Liver-Directed Local Therapy (LDLT)

**(A) 3-Months**



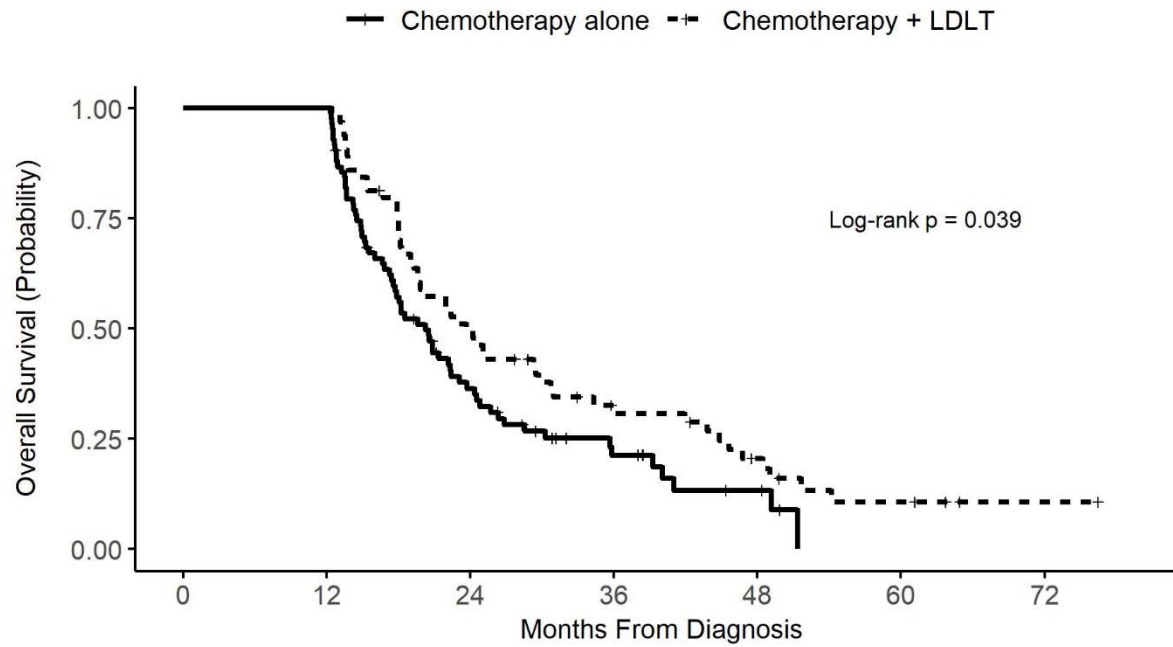
Chemotherapy alone	180	83	27	11	4	0	0
Chemotherapy + LDLT	100	64	31	17	9	4	1

**(B) 6 Months**



Chemotherapy alone	129	83	27	11	4	0	0
Chemotherapy + LDLT	88	64	31	17	9	4	1

**(C) 12 Months**



Chemotherapy alone	83	83	27	11	4	0	0
Chemotherapy + LDLT	64	64	31	17	9	4	1

**eTable.** Patient and Disease Characteristics of the Propensity Matched Cohort, Stratified by Receipt of Liver-Directed Local Therapy (LDLT)

<b>Characteristic</b>	<b>Chemotherapy Alone (n = 104)</b>	<b>Chemotherapy + LDLT (n = 104)</b>	<b>P</b>
<b>Age</b> Median (IQR)	62.0 (54 - 70)	61.5 (54.0 - 70.2)	0.76 <sup>†</sup>
<b>Sex</b> Male Female	47 (45.2%) 57 (54.8%)	46 (44.2%) 58 (55.8%)	1.00 <sup>‡</sup>
<b>Race</b> White Black Other	94 (90.4%) 8 (7.7%) 2 (1.9%)	90 (86.5%) 9 (8.7%) 5 (4.8%)	0.55 <sup>‡</sup>
<b>Charlson Comorbidity Score</b> 0 1 2 3+	76 (73.1%) 21 (20.2%) 7 (6.7%) 0 (0.0%)	73 (70.2%) 25 (24.0%) 5 (4.8%) 1 (1.0%)	0.69 <sup>‡</sup>
<b>Insurance Status</b> No Insurance Private Government	4 (3.8%) 55 (52.9%) 45 (43.3%)	5 (4.8%) 51 (49.0%) 48 (46.2%)	0.83 <sup>‡</sup>
<b>Treatment Facility</b> Community Cancer Program Comprehensive Community Cancer Program Academic/Research Integrated Network Cancer Program	5 (4.8%) 26 (25.0%) 62 (59.6%) 11 (10.6%)	5 (4.8%) 32 (30.8%) 56 (53.8%) 11 (10.6%)	0.82 <sup>‡</sup>
<b>Year of Diagnosis</b> Median (IQR)	2011 (2009 - 2013)	2011 (2009 - 2013)	0.49 <sup>†</sup>
<b>T-Stage</b> <sup>§</sup> 1	13 (12.5%)	15 (14.4%)	

2	41 (39.4%)	36 (34.6%)	0.69 <sup>‡</sup>
3	40 (38.5%)	38 (36.5%)	
4	10 (9.6%)	15 (14.4%)	
<b>Tumor Focality</b>			0.37 <sup>‡</sup>
Unifocal	28 (26.9%)	35 (33.7%)	
Multifocal	76 (73.1%)	69 (66.3%)	
<b>N-Stage<sup>§</sup></b>			1.00 <sup>‡</sup>
0	45 (43.3%)	46 (44.2%)	
1	59 (56.7%)	58 (55.8%)	
<b>Bone Metastasis</b>			0.38 <sup>‡</sup>
No	90 (86.5%)	95 (91.3%)	
Yes	14 (13.5%)	9 (8.7%)	
<b>Lung Metastasis</b>			1.00 <sup>‡</sup>
No	90 (86.5%)	91 (87.5%)	
Yes	14 (13.5%)	13 (12.5%)	
<b>Distant Lymph Node Metastasis</b>			0.89 <sup>‡</sup>
No	59 (56.7%)	61 (58.7%)	
Yes	45 (43.3%)	43 (41.3%)	

Abbreviations. IQR- interquartile range.

† Mann-Whitney U (Wilcoxon rank-sum) test

‡ Fisher's exact test

§ American Joint Committee on Cancer (AJCC) 7<sup>th</sup> edition