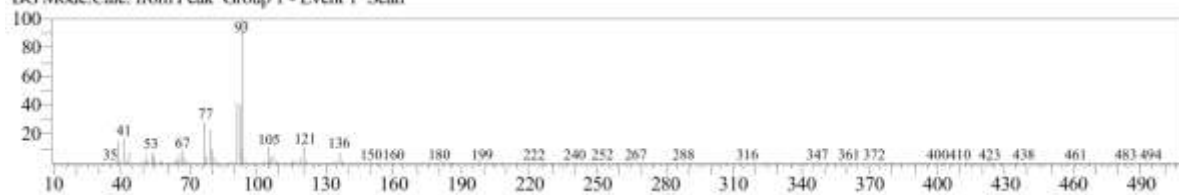


<< Target >>
Line#:2 R.Time:7.630(Scan#:927) Retention Index:925 MassPeaks:298
RawMode:Averaged 7.625-7.635(926-928) BasePeak:93.00(21413)
BG Mode:Calc. from Peak Group 1 - Event 1 Scan



S2 Fig. EI/MS spectrum of compound (2) identified as α -Pinene in the essential oils of *M. alternifolia* and *R. officinalis*