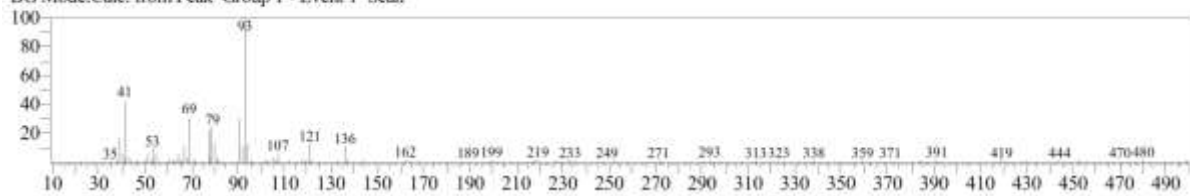


<< Target >>

Line#:3 R.Time:8.930(Scan#:1187) Retention Index:972 MassPeaks:301

RawMode:Averaged 8.925-8.935(1186-1188) BasePeak:93.00(4808)

BG Mode:Calc. from Peak Group 1 - Event 1 Scan



**S4 Fig. EI/MS spectrum of compound (4) identified as  $\beta$ -pinene in the essential oils of *M. alternifolia* and *R. officinalis***