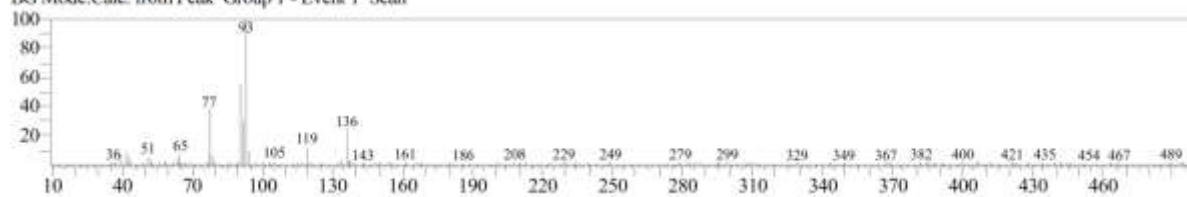


<< Target >>

Line#:5 R.Time:9.785(Scan#:1358) Retention Index:1003 MassPeaks:245

RawMode:Averaged 9.780-9.790(1357-1359) BasePeak:93.00(3295)

BG Mode:Calc. from Peak Group 1 - Event 1 Scan



**S6 Fig. EI/MS spectrum of compound (6) identified as  $\alpha$ -Phellandrene in the essential oil of *M. alternifolia***