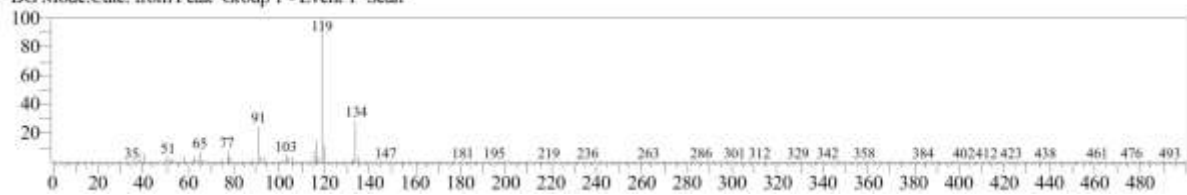


<< Target >>

Line#:7 R. Time:10.430(Scan#:1487) Retention Index:1023 MassPeaks:286

RawMode:Averaged 10.425-10.435(1486-1488) BasePeak:119.00(29680)

BG Mode:Calc. from Peak Group 1 - Event 1 Scan



S8 Fig. EI/MS spectrum of compound (8) identified as *p*-Cymene in the essential oils of *M. alternifolia* and *R. officinalis*