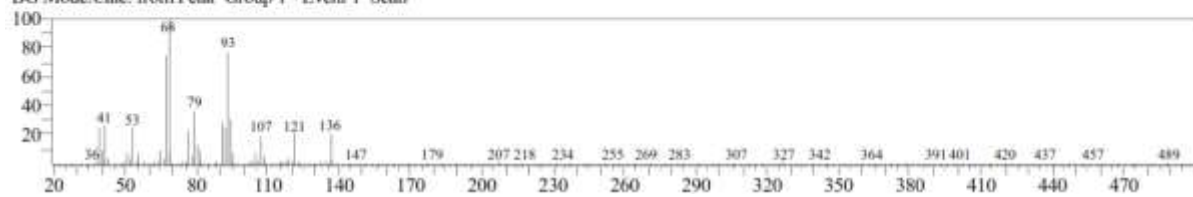


<< Target >>
Line#:6 R.Time:10.555(Scan#:1512) Retention Index:1027 MassPeaks:315
RawMode:Averaged 10.550-10.560(1511-1513) BasePeak:68.00(11024)
BG Mode:Calc. from Peak Group 1 - Event 1 Scan



S9 Fig. EI/MS spectrum of compound (9) identified as *D*-Limonene in the essential oil of *R. officinalis*