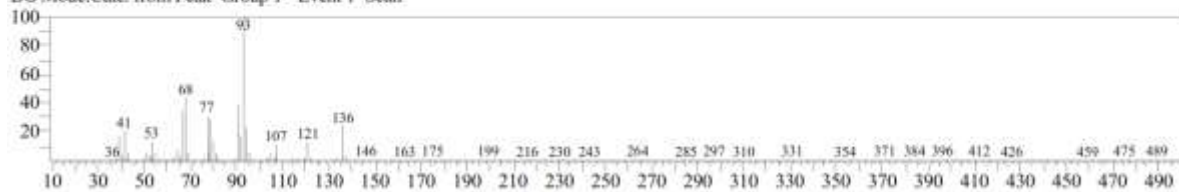


<< Target >>

Line#:8 R.Time:10.560(Scan#:1513) Retention Index:1028 MassPeaks:273

RawMode:Averaged 10.555-10.565(1512-1514) BasePeak:93.00(9372)

BG Mode:Calc. from Peak Group 1 - Event 1 Scan



S10 Fig. EI/MS spectrum of compound (10) identified as Sylvestrene in the essential oil of *M. alternifolia*