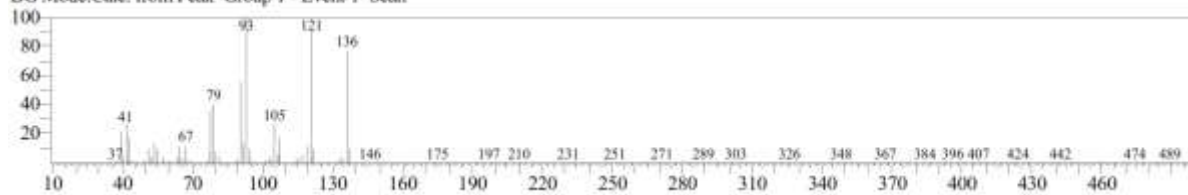


<< Target >>

Line#:11 R.Time:12.445(Scan#:1890) Retention Index:1088 MassPeaks:270

RawMode:Averaged 12.440-12.450(1889-1891) BasePeak:93.00(15455)

BG Mode:Calc. from Peak Group 1 - Event 1 Scan



S13 Fig. EI/MS spectrum of compound (13) identified as Terpinolene in the essential oil of *M. alternifolia*