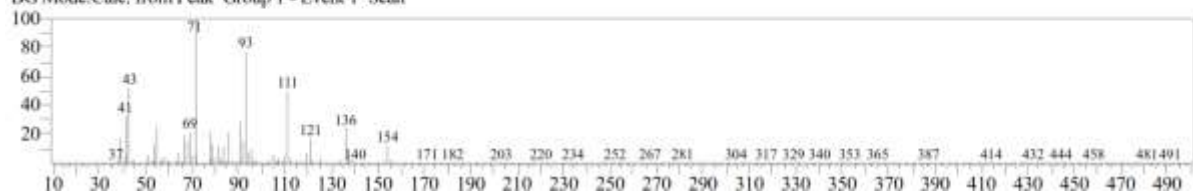


<< Target >>

Line#:12 R.Time:15.260(Scan#:2453) Retention Index:1179 MassPeaks:321

RawMode:Averaged 15.255-15.265(2452-2454) BasePeak:71.00(175559)

BG Mode:Calc. from Peak Group 1 - Event 1 Scan



S17 Fig. EI/MS spectrum of compound (17) identified as Terpinen-4-ol in the essential oil of *M. alternifolia*