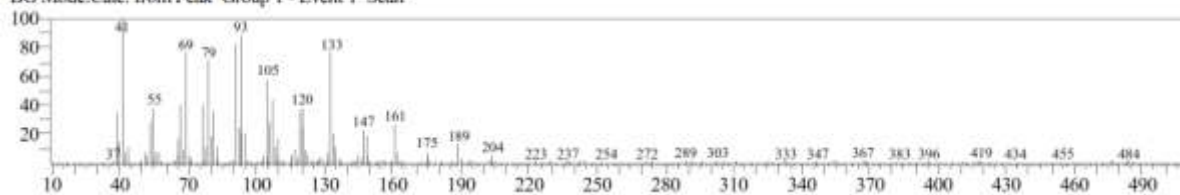


<< Target >>
Line#:12 R.Time:22.275(Scan#:3856) Retention Index:1424 MassPeaks:292
RawMode:Averaged 22.270-22.280(3855-3857) BasePeak:41.00(4469)
BG Mode:Calc. from Peak Group 1 - Event 1 Scan



S19 Fig. EI/MS spectrum of compound (19) identified as Caryophyllene in the essential oil of *R. officinalis*