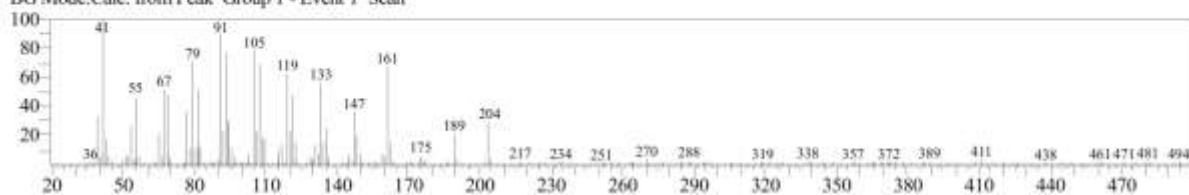


<< Target >>

Line#:14 R.Time:22.800(Scan#:3961) Retention Index:1445 MassPeaks:268

RawMode:Averaged 22.795-22.805(3960-3962) BasePeak:41.00(1482)

BG Mode:Calc. from Peak Group 1 - Event 1 Scan



S20 Fig. EI/MS spectrum of compound (20) identified as Alloaromadendrene in the essential oil of *M. alternifolia*