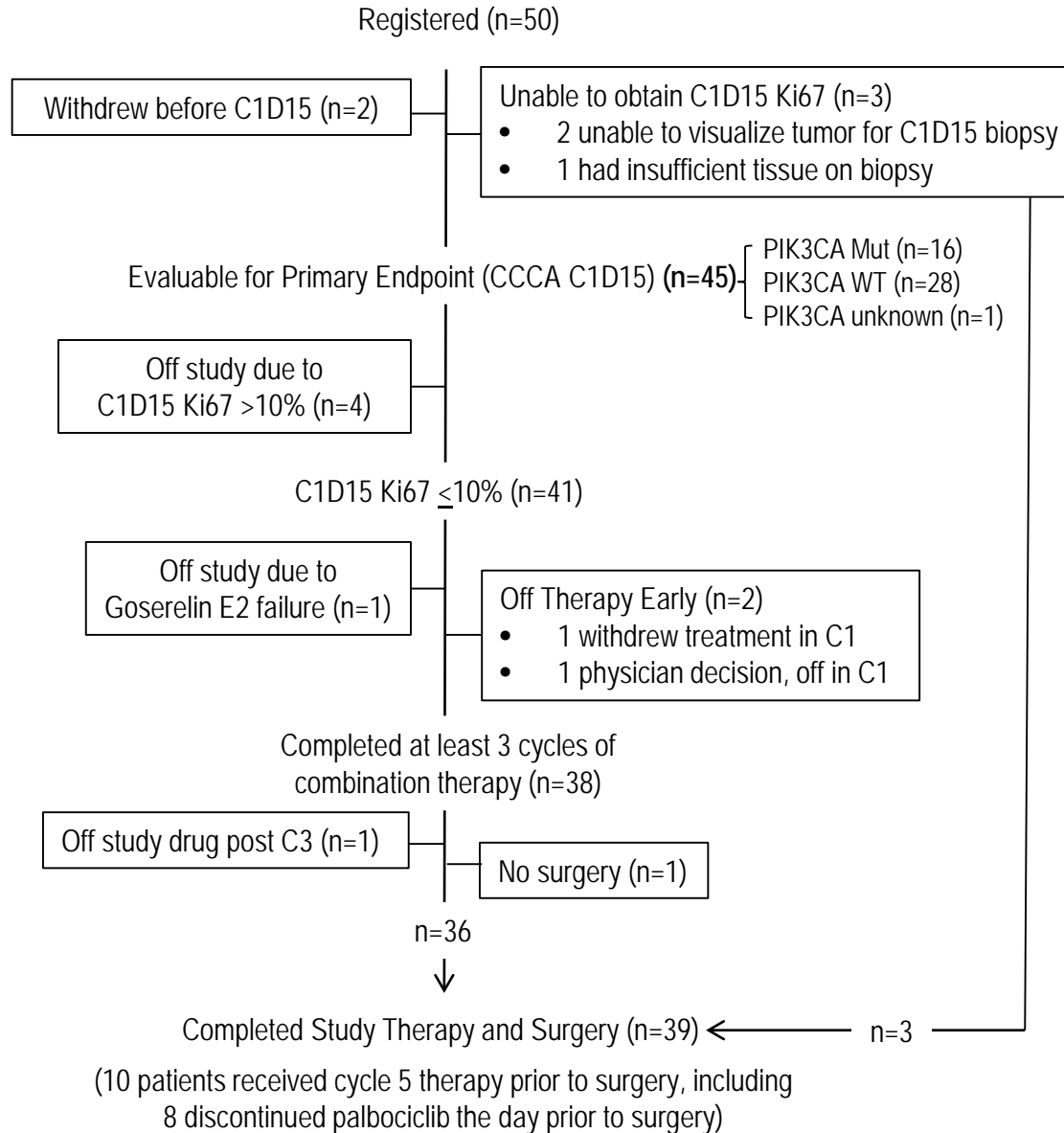
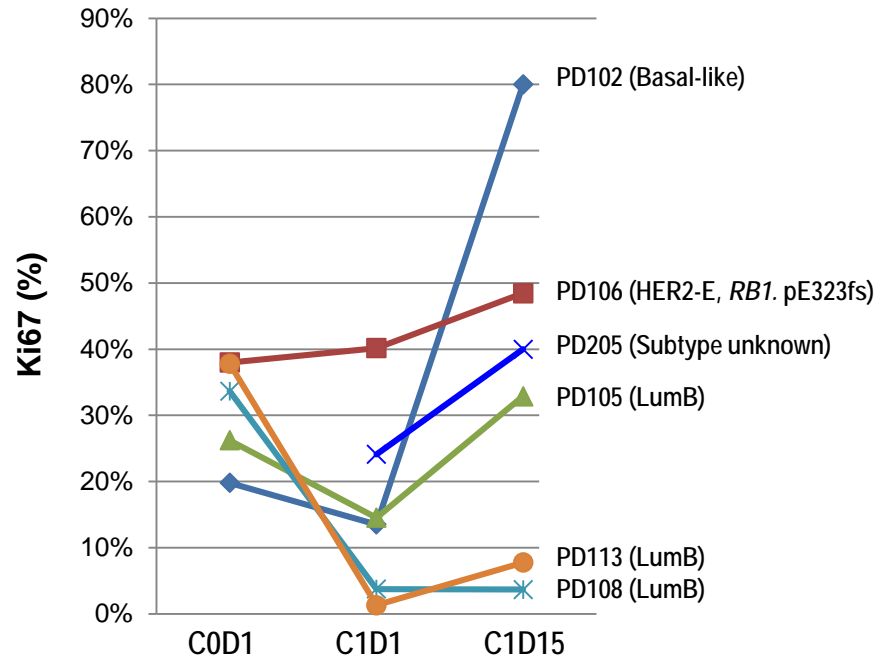


Supplementary Fig. S1 Consort Diagram



Supplementary Fig. S2 Clinicopathologic and molecular features of the 6 palbociclib resistant tumors



PD102: 49 year-old premenopausal woman with grade 3, ER+/PgR+ invasive ductal carcinoma (IDC) that was basal-like and carried mutations in *TP53* (S127F), in addition to *NCOR1* and *PIK3R1*.

PD106: 59 year-old postmenopausal woman with grade 3, ER+/PgR+ IDC that was HER2-E and carried mutations in *TP53* (K132N/M), *RB1* (E323fs), *PTEN* (T319fs), *MLL2*, and *MALAT1*

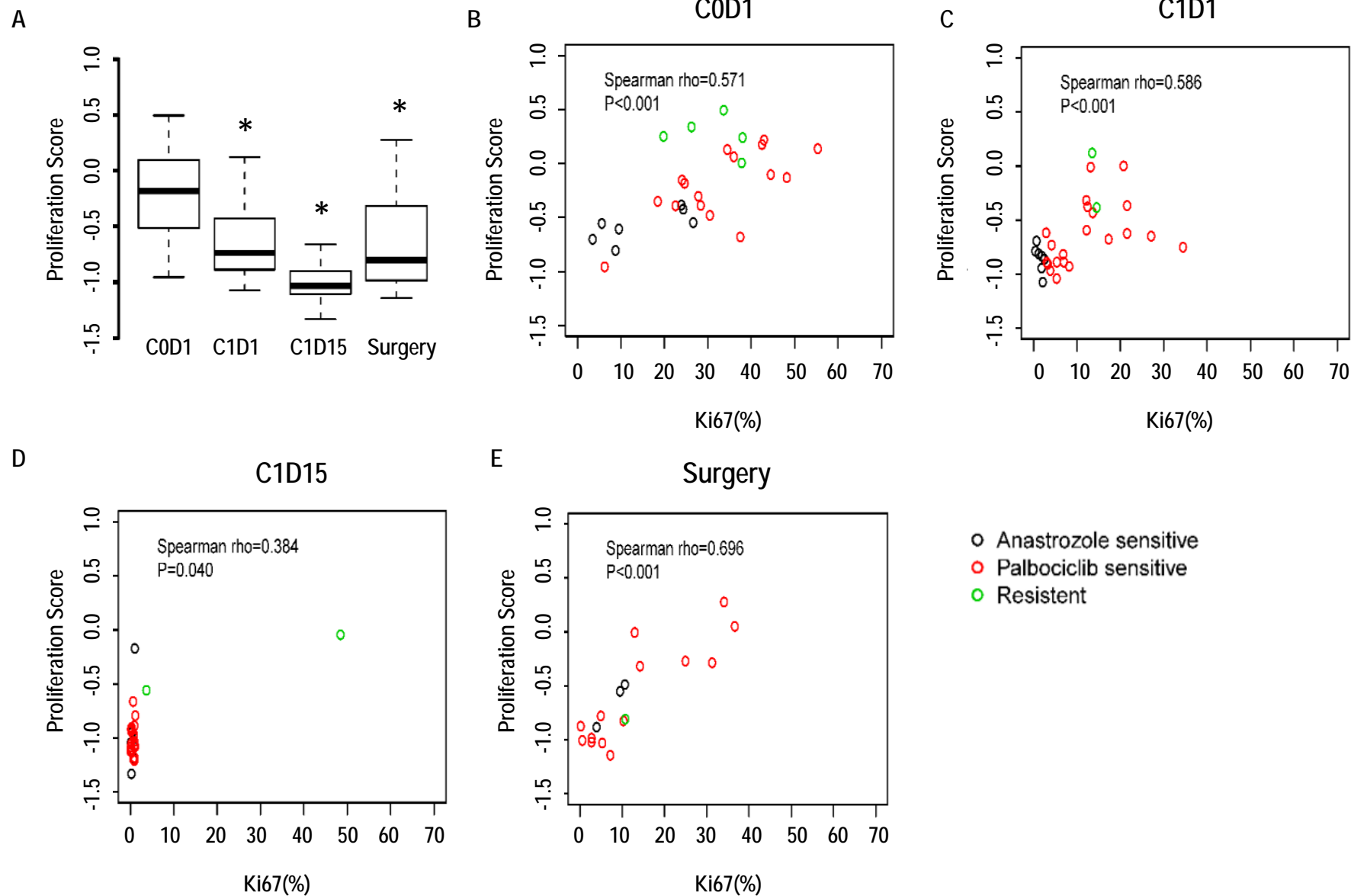
PD205: 40 year-old premenopausal woman with grade 2 ER+/PgR+ IDC of unknown subtype or mutations.

PD105: 64 year-old postmenopausal woman with grade 1 ER+/PgR- IDC that was LumB and without detectable tier 1 mutations in the 83 genes sequenced.

PD113: 57 year-old postmenopausal woman with grade 2 ER+/PgR+ ILC that was LumB and with mutations in multiple genes including *ATR*, *MAP3K1*, *GATA3*, *MLL*, *BRCA2*, *FOXA1*, *AKT1*, and *CDH1*.

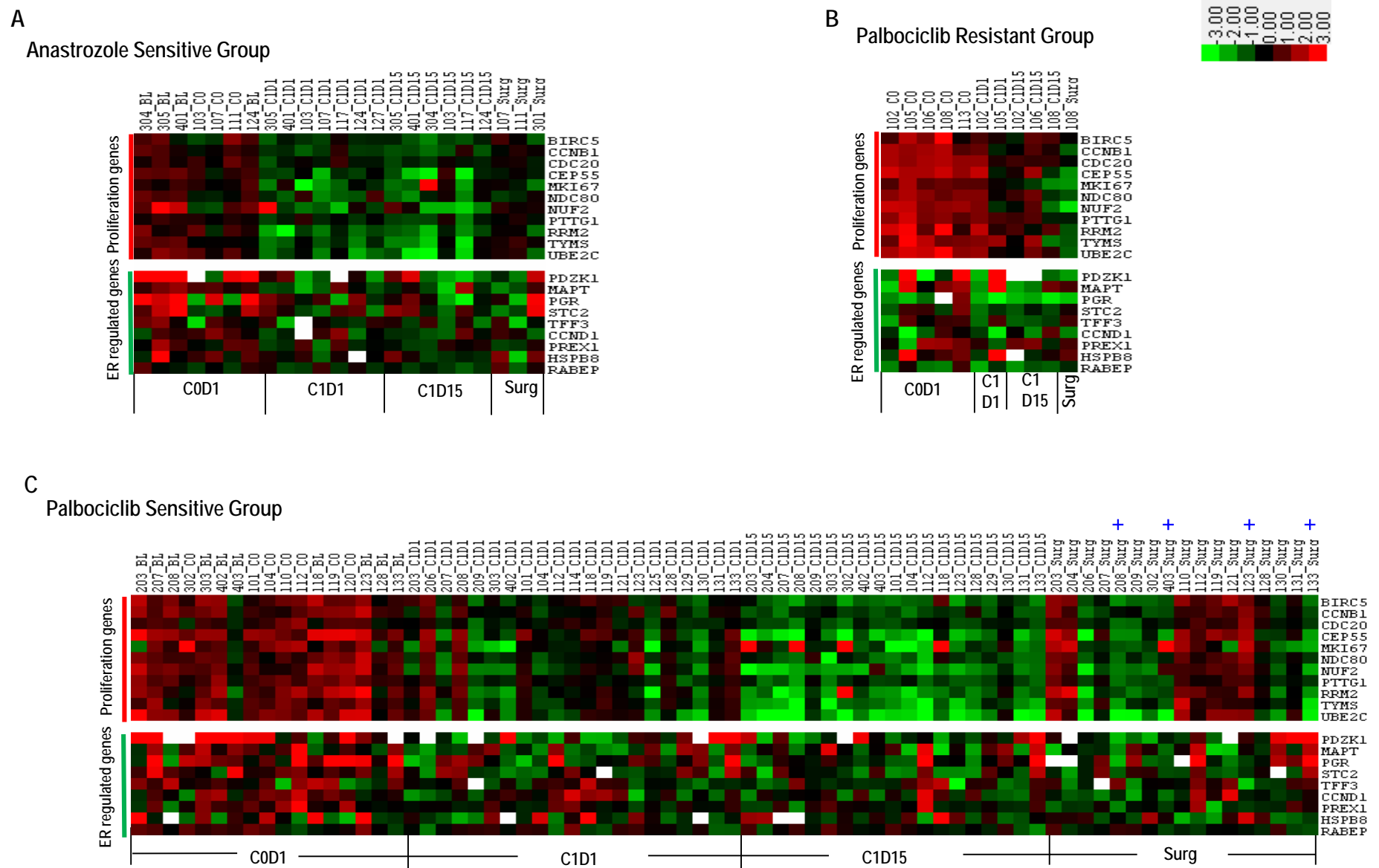
PD108: 58 year-old postmenopausal woman with grade 2 ER+/PgR- IDC that was LumB and carried *TP53* T18fs.

Supplementary Fig. S3 PAM50 11-gene proliferation score by time points (A) and its correlation to Ki67 at different time points, baseline (C0D1) (B), C1D1 (C), C1D15 (D), and at surgery (E).



Ki67 response of each individual tumor is annotated by the color of circle in panels B-D. \* indicates  $p < 0.005$  when the proliferation scores were compared to that of the previous time point.

Supplementary Fig. S4 Heatmap of the 11 PAM50 proliferation genes and 9 ER regulated genes of individual tumor at each time point for the anastrozole sensitive group (A), palbociclib resistant group (B), and palbociclib sensitive group (C)



+ With Cycle 5