

# **Design, synthesis, and discovery of novel oxindoles bearing 3-heterocycles as species-specific and combinatorial agents in eradicating *Staphylococcus* species**

Jonghoon Shin<sup>1,+</sup>, Krishna Bahadur Somai Magar<sup>2,+</sup>, Jungwoon Lee<sup>3</sup>,

Kwang-sun Kim<sup>1,\*</sup> & Yong Rok Lee<sup>2,\*</sup>

<sup>1</sup>Department of Chemistry and Chemistry Institute for Functional Materials, Pusan National University, Busan 46241, Republic of Korea

<sup>2</sup>School of Chemical Engineering, Yeungnam University, Gyeongsan 38541, Republic of Korea

<sup>3</sup>Environmental Disease Research Center, Korea Research Institute of Bioscience & Biotechnology, 125 Gwahak-ro, Yuseong-gu, Daejeon 34141, Republic of Korea

\*Correspondence and requests for materials should be addressed to Y.R.L. (E-mail:yrlee@yu.ac.kr) or K.S.K. (E-mail:kwangsun.kim@pusan.ac.kr)

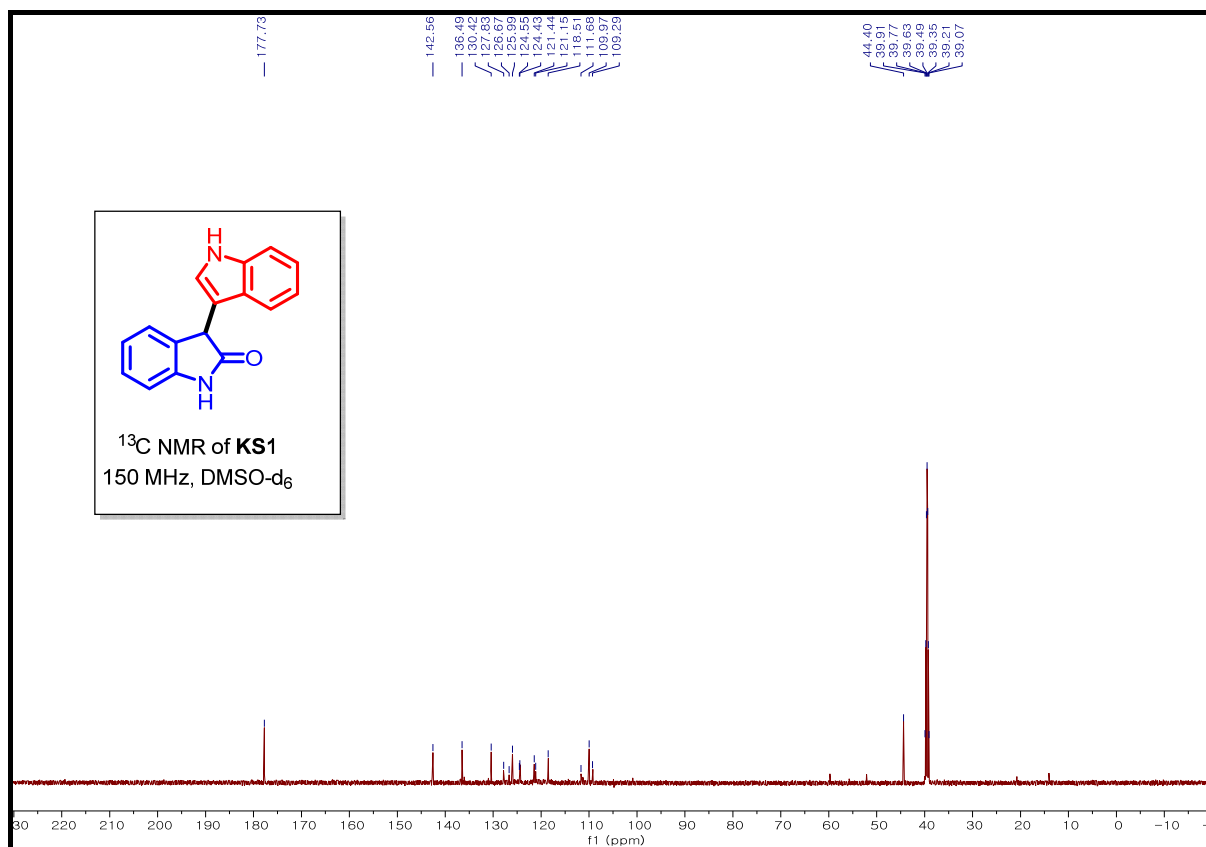
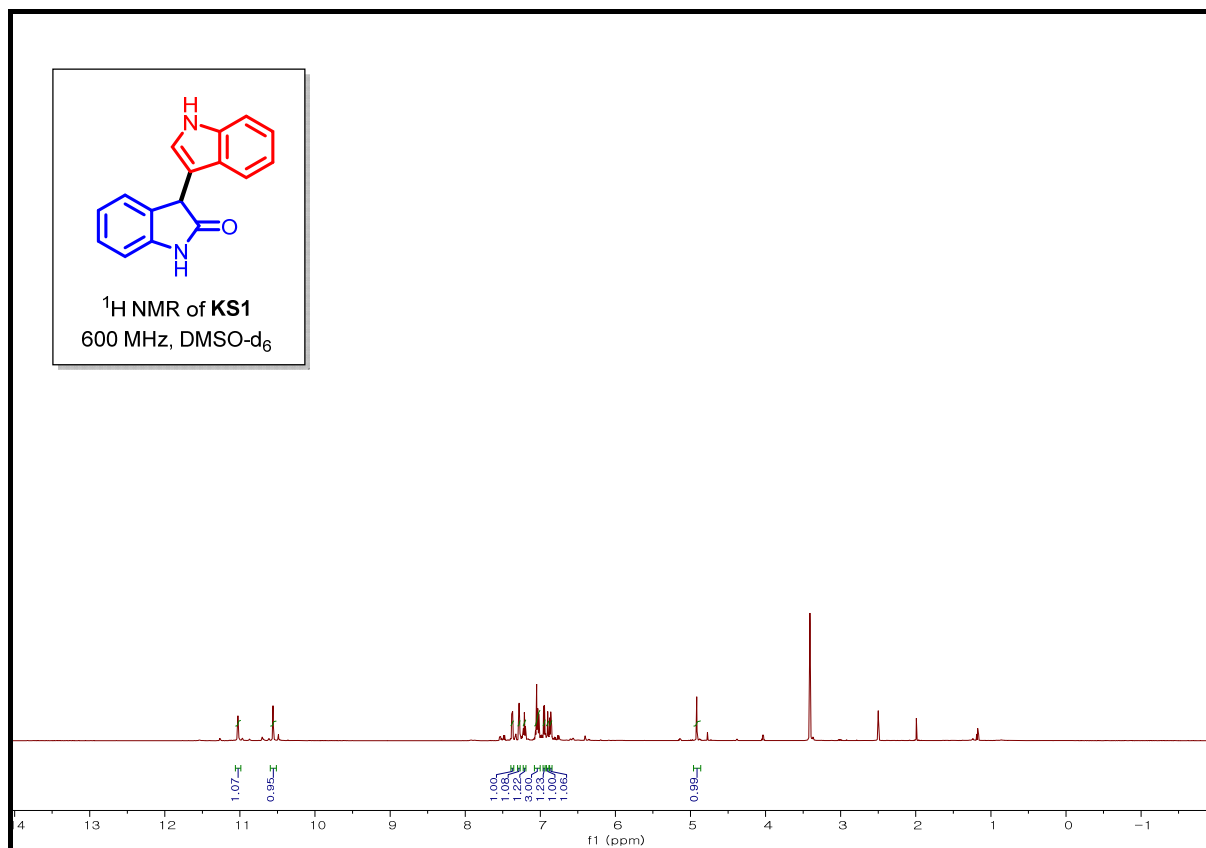
<sup>+</sup>These authors contributed equally to this work

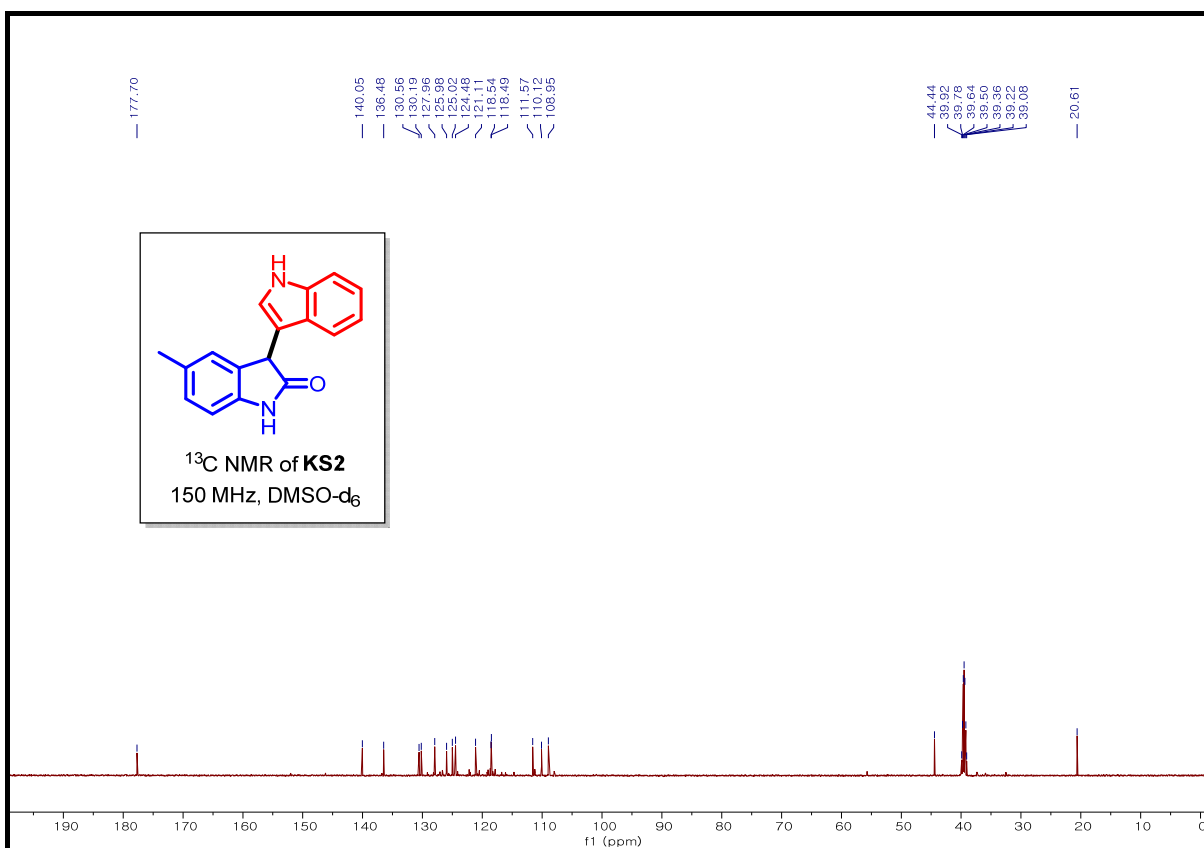
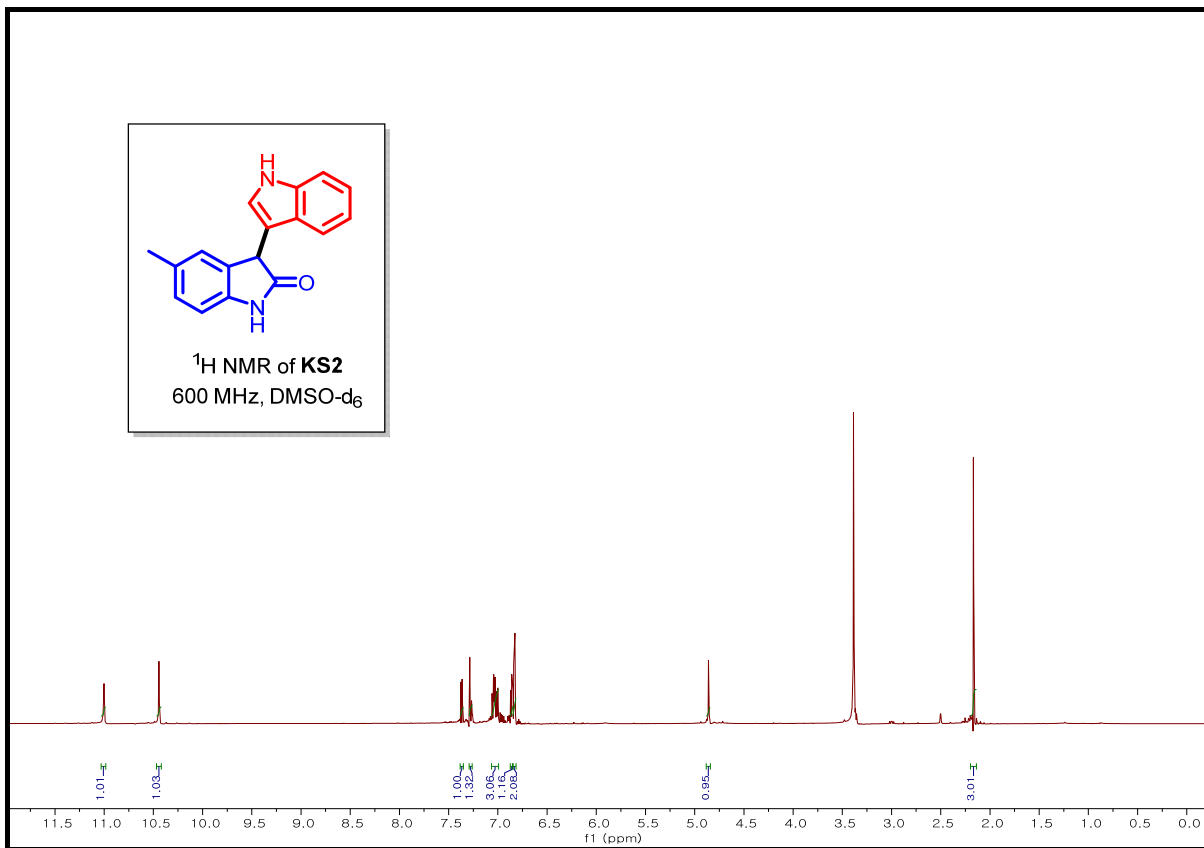
## **SUPPORTING INFORMATION (SI)**

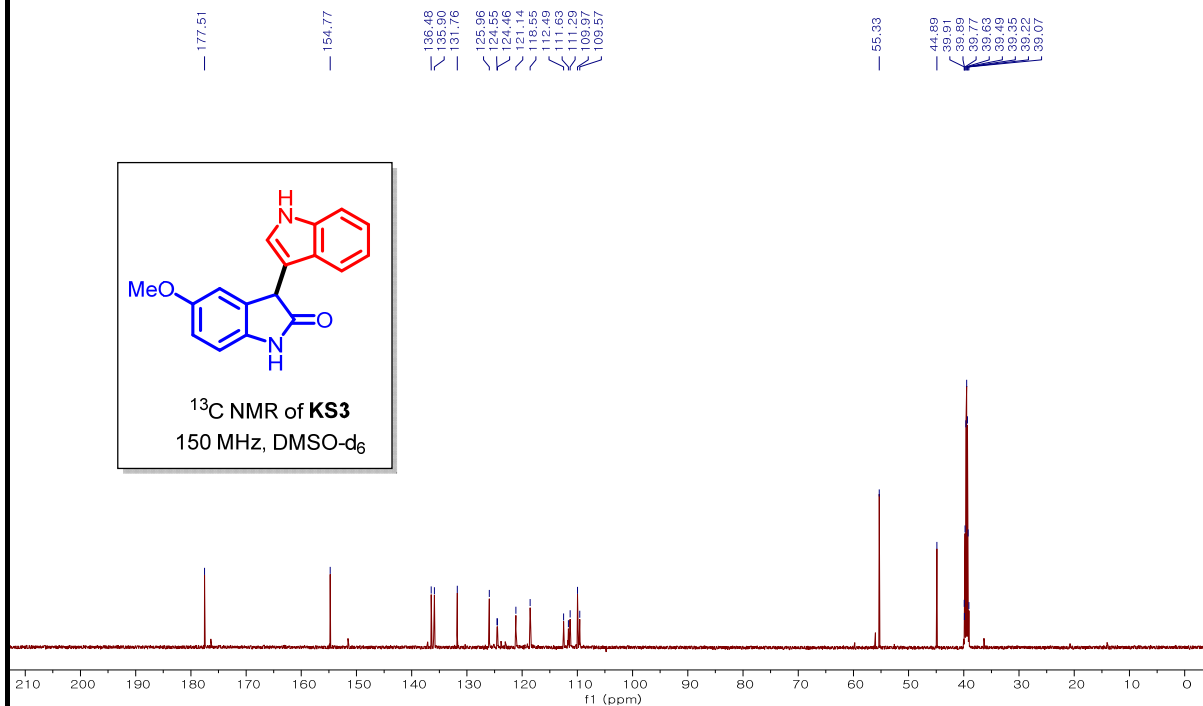
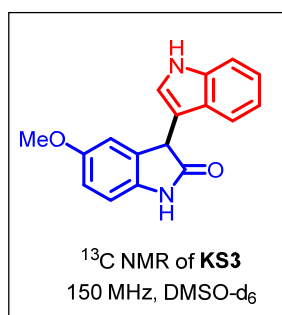
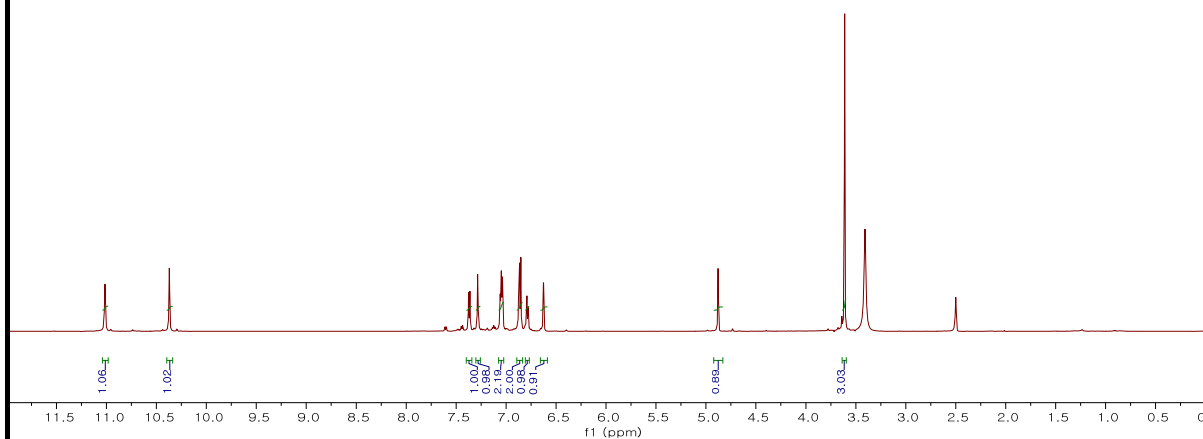
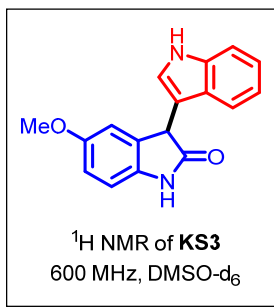
### **TABLE OF CONTENTS**

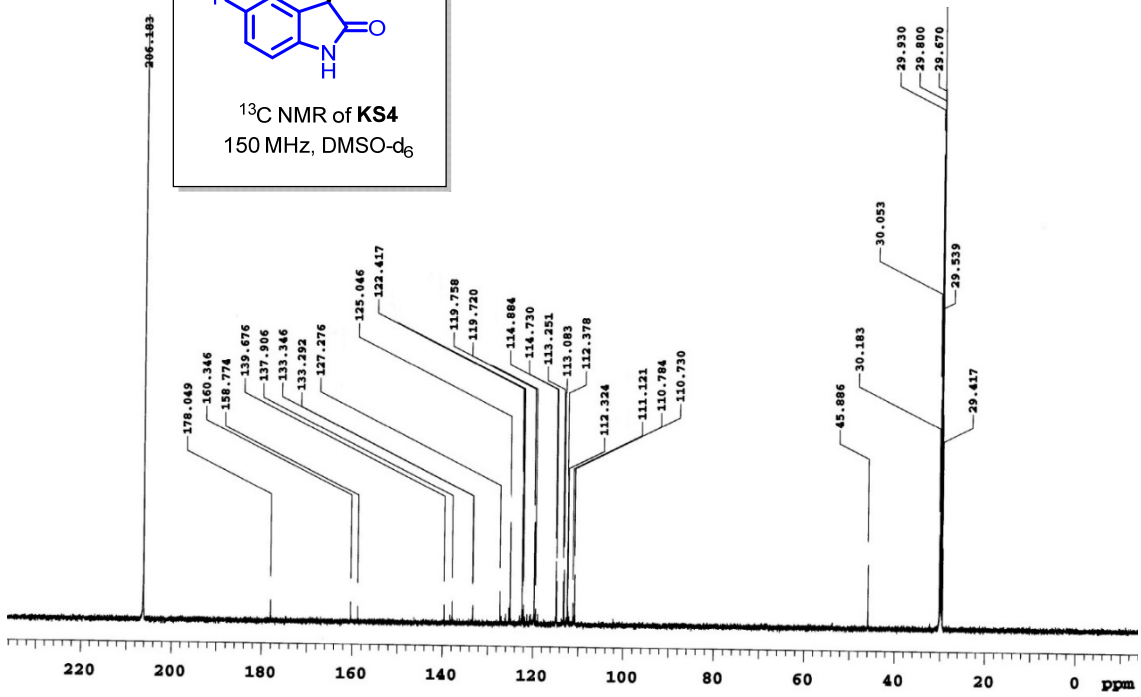
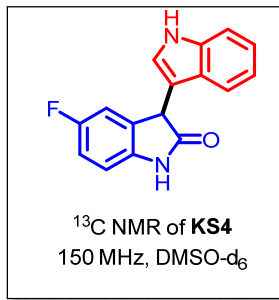
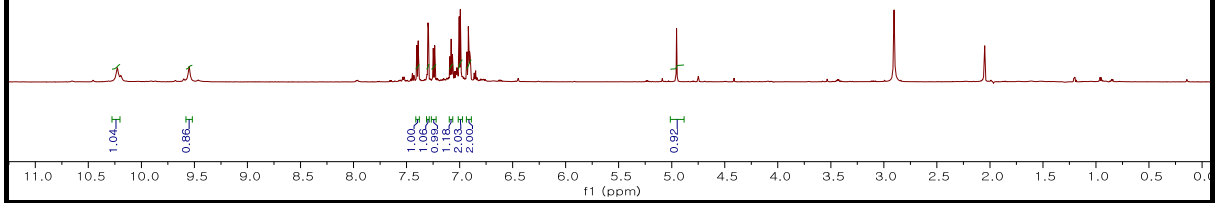
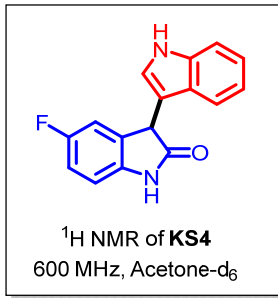
<b>SI1. <sup>1</sup>H NMR and <sup>13</sup>C NMR Spectra of Synthesized Compounds KS1-KS20 .....</b>	<b>S2-S21</b>
<b>SI2. Copy of GC Spectrum of compound KS16 .....</b>	<b>S22</b>

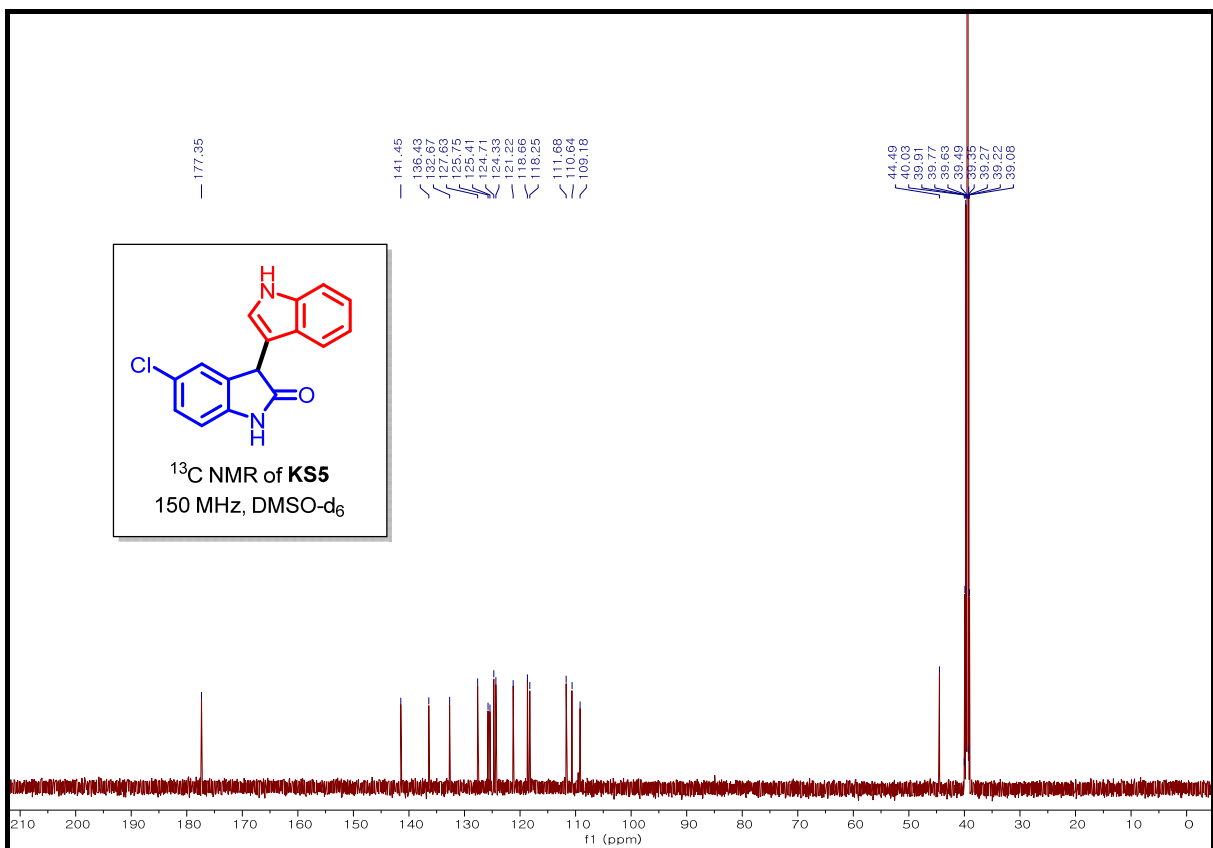
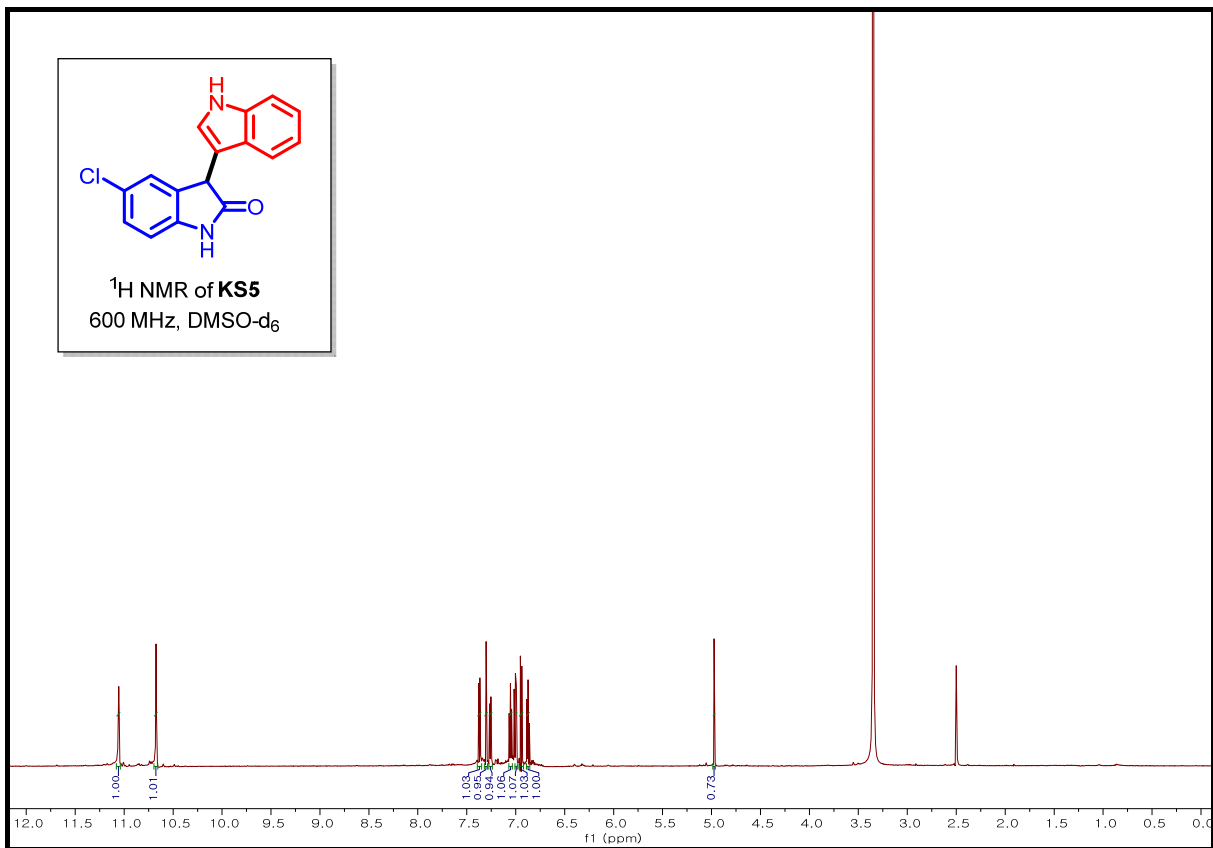
# <sup>1</sup>H NMR and <sup>13</sup>C NMR Spectra of Synthesized Compounds KS1-KS20

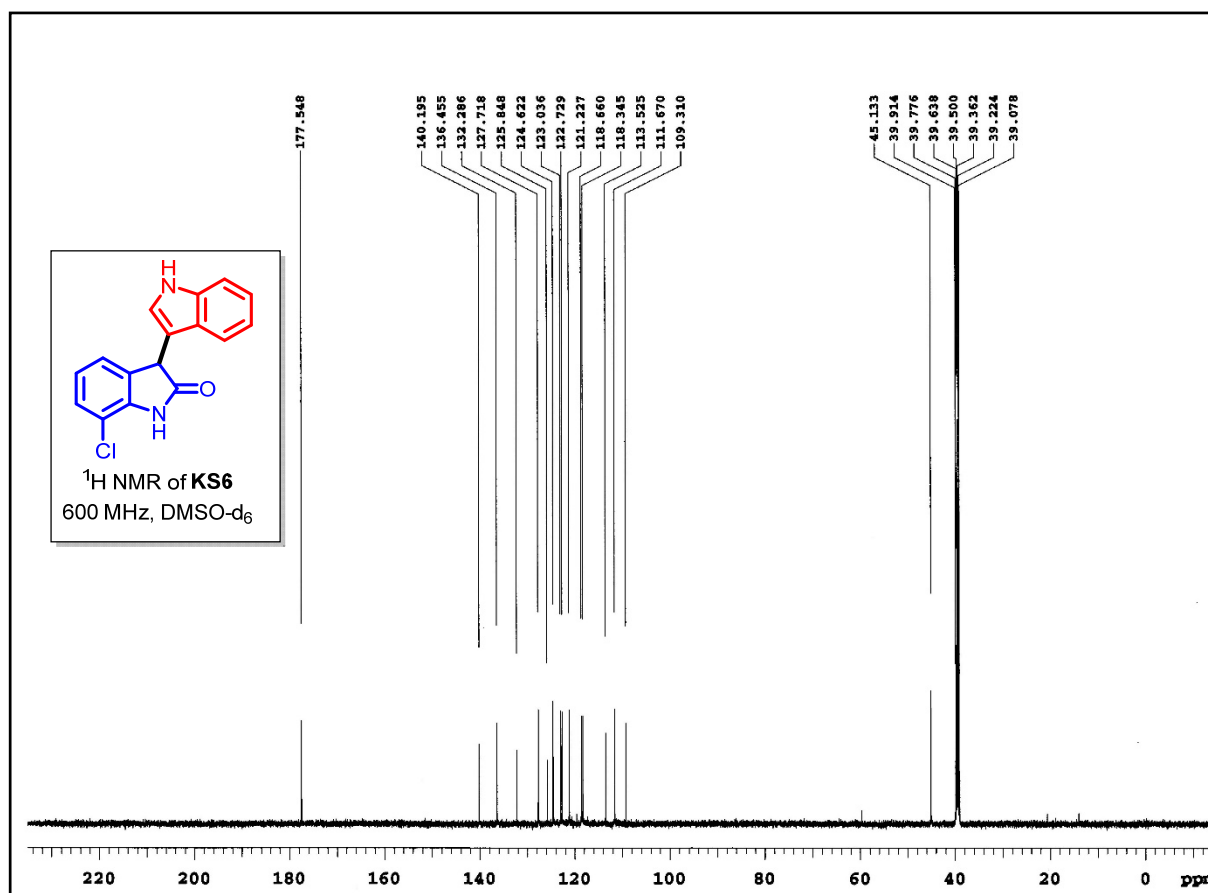
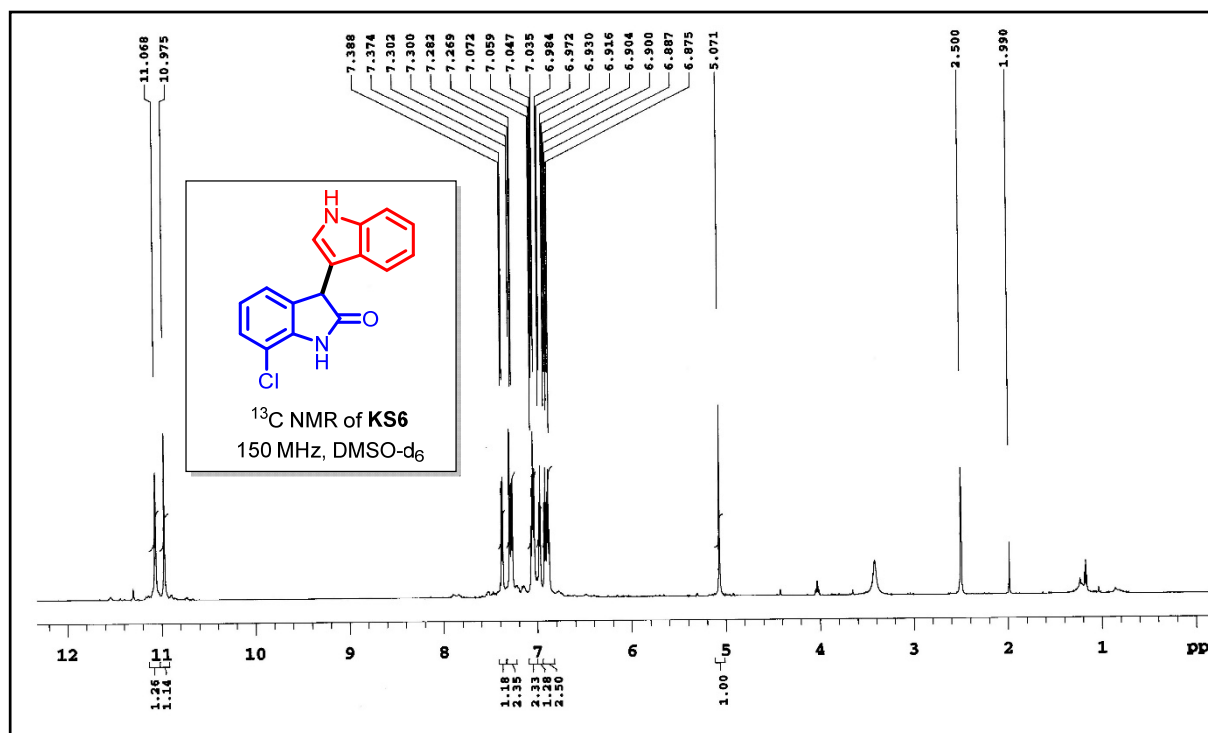


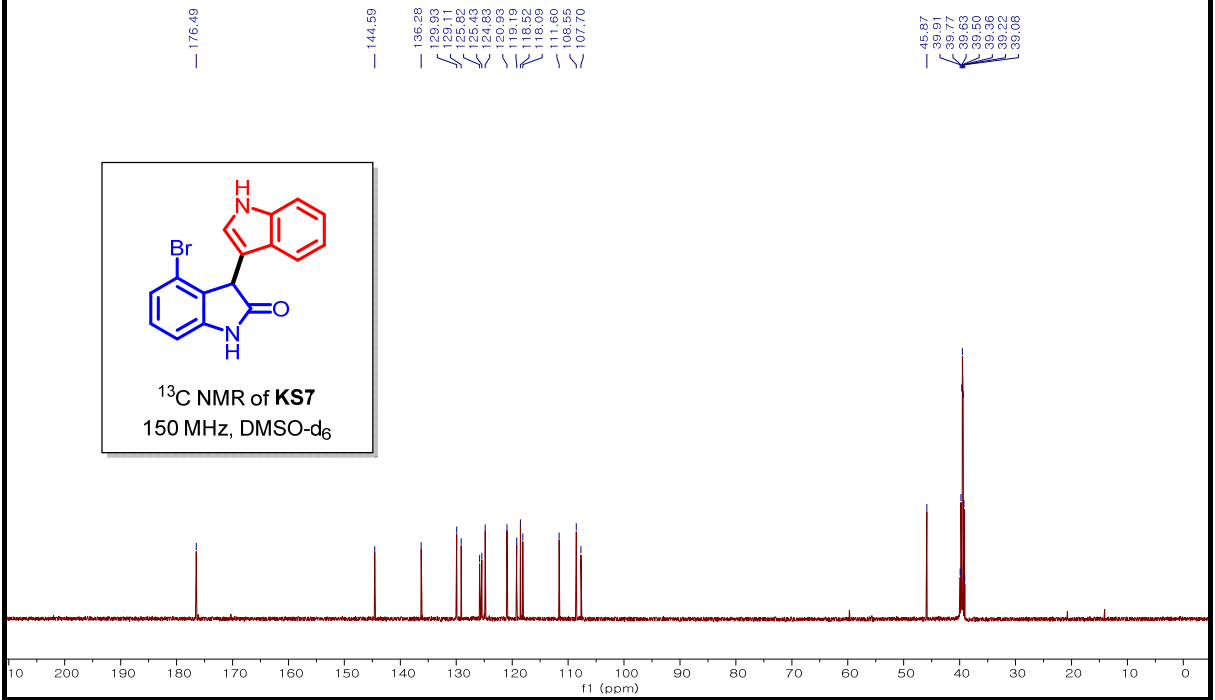
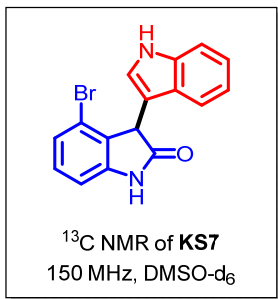
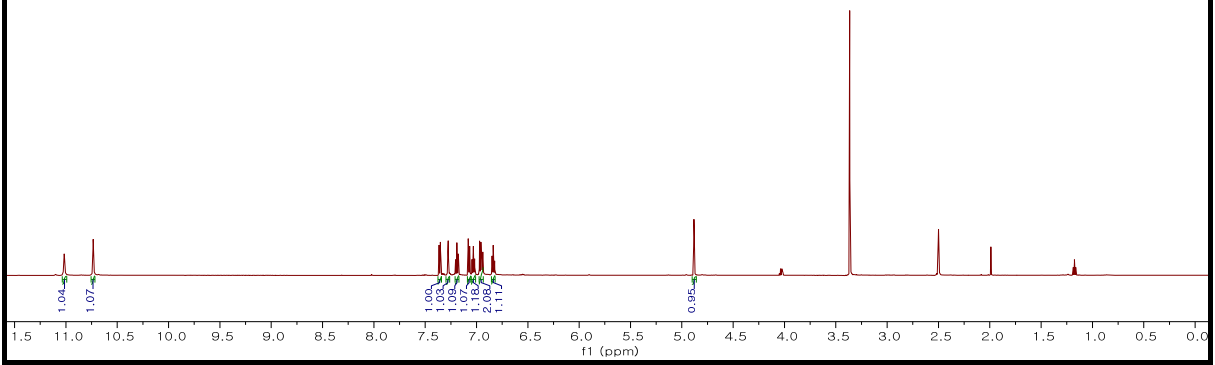
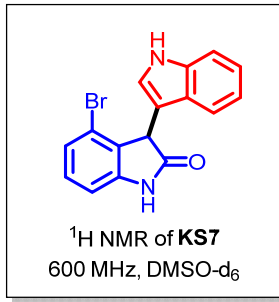




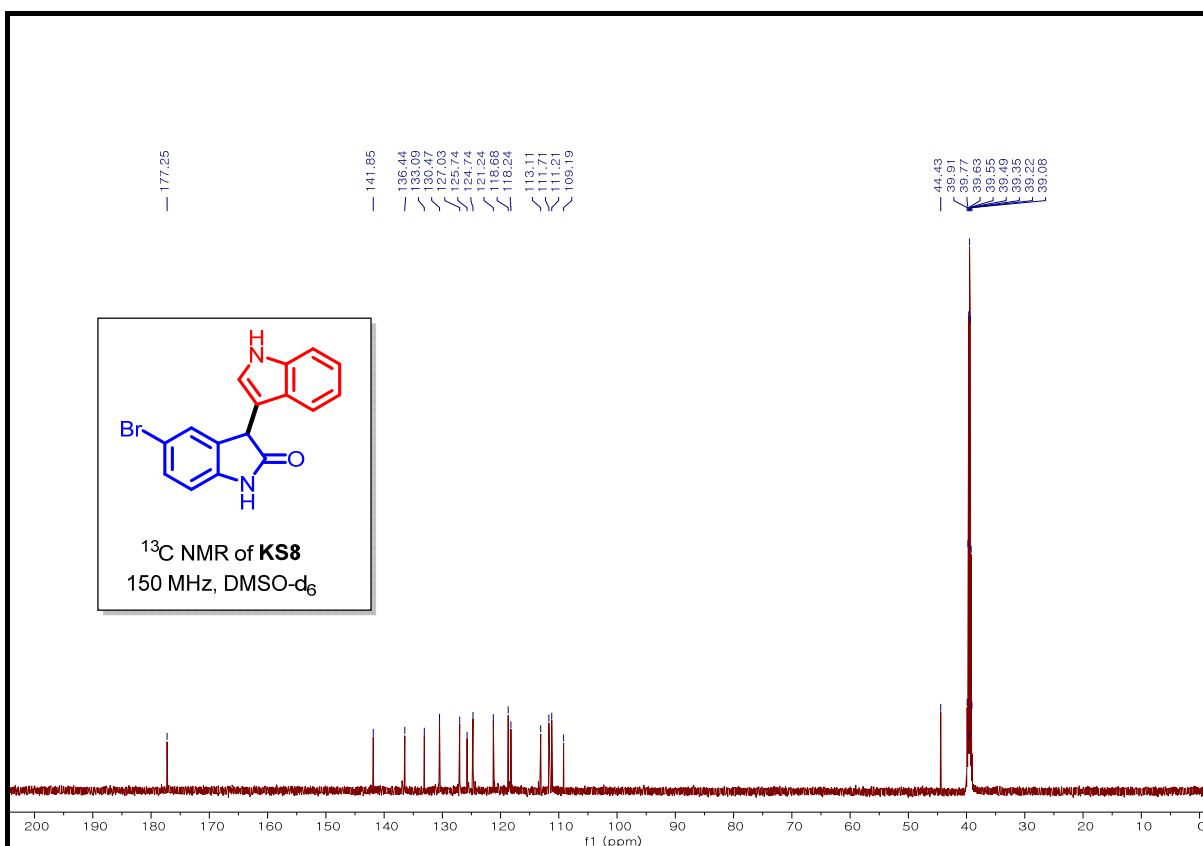
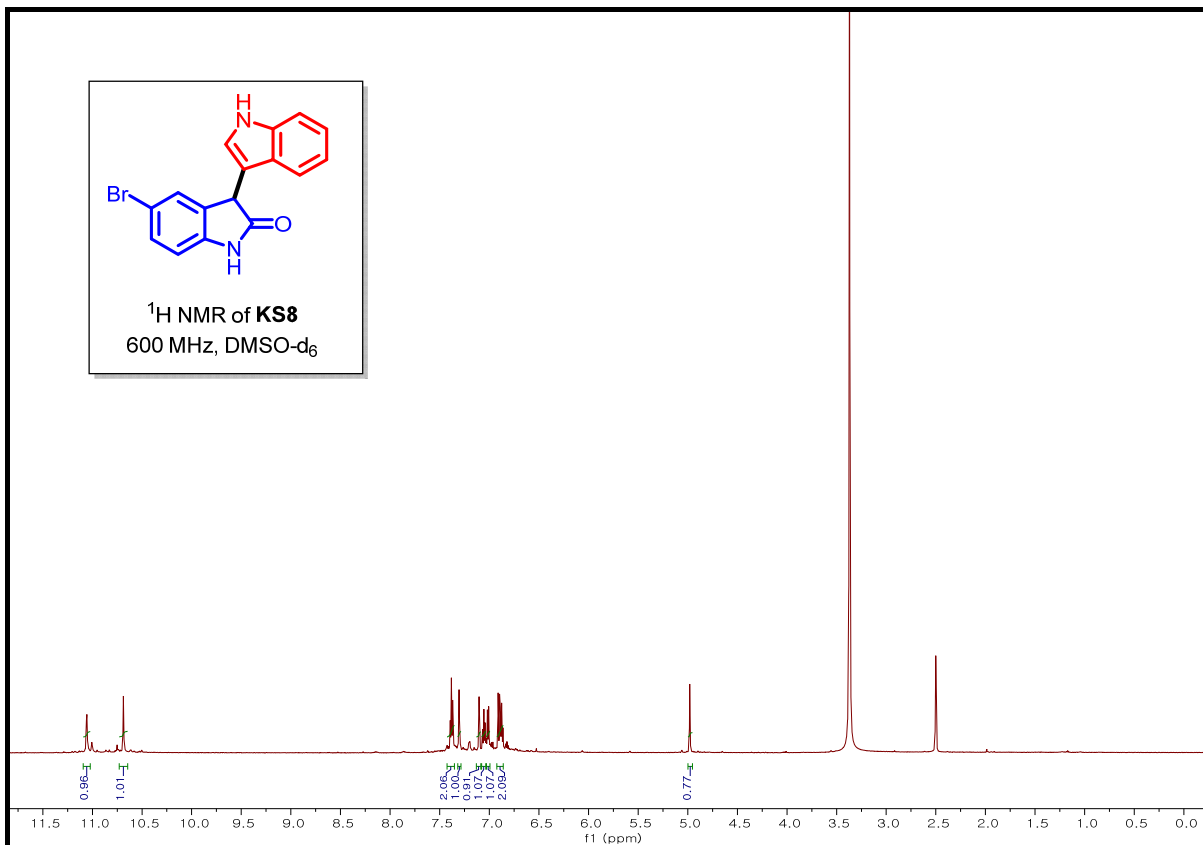


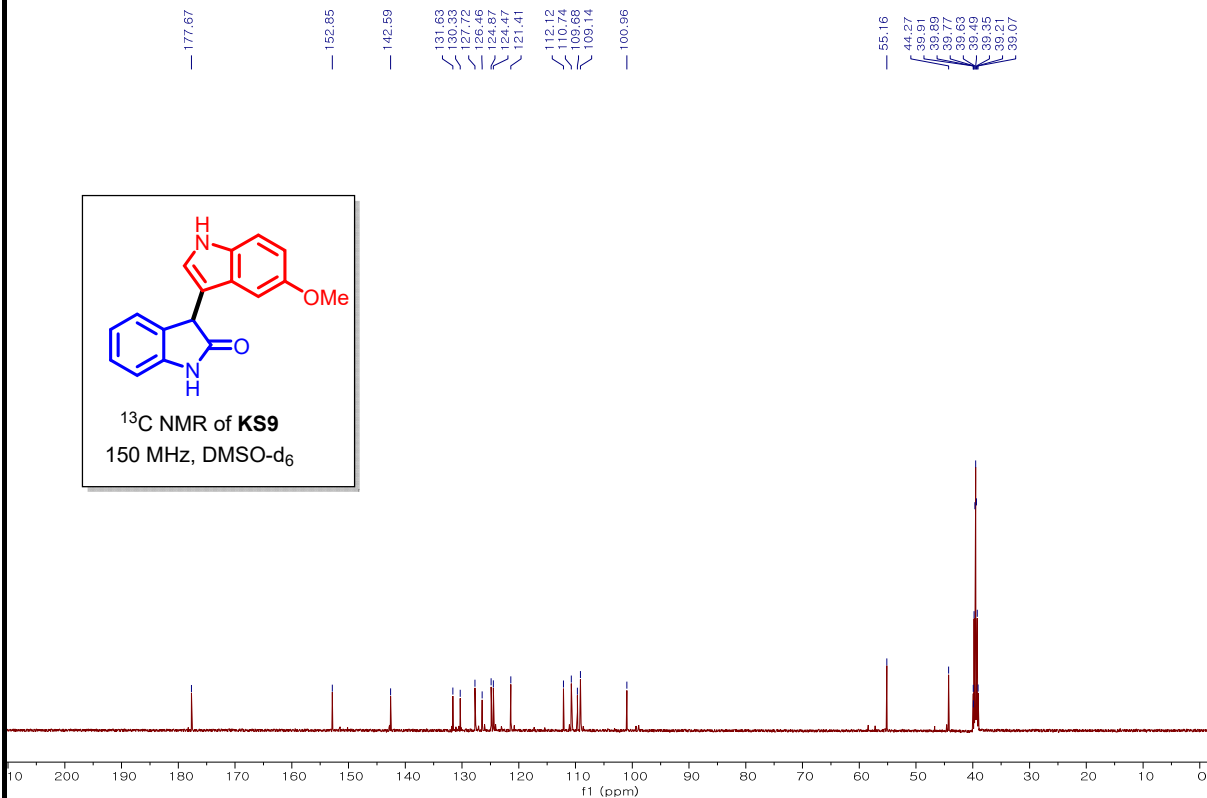
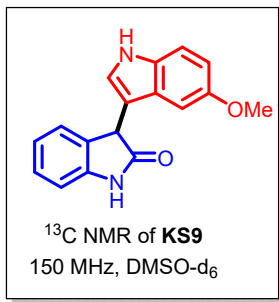
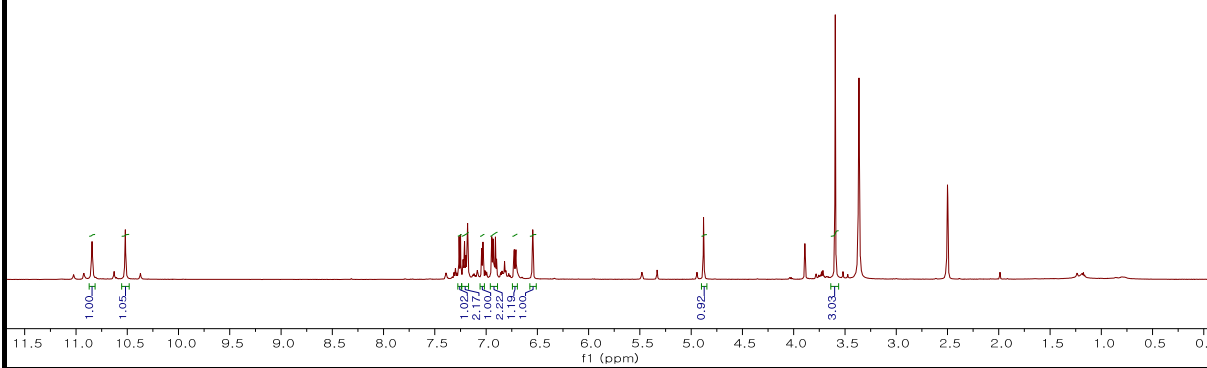
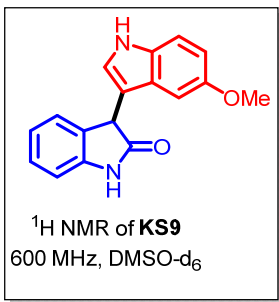


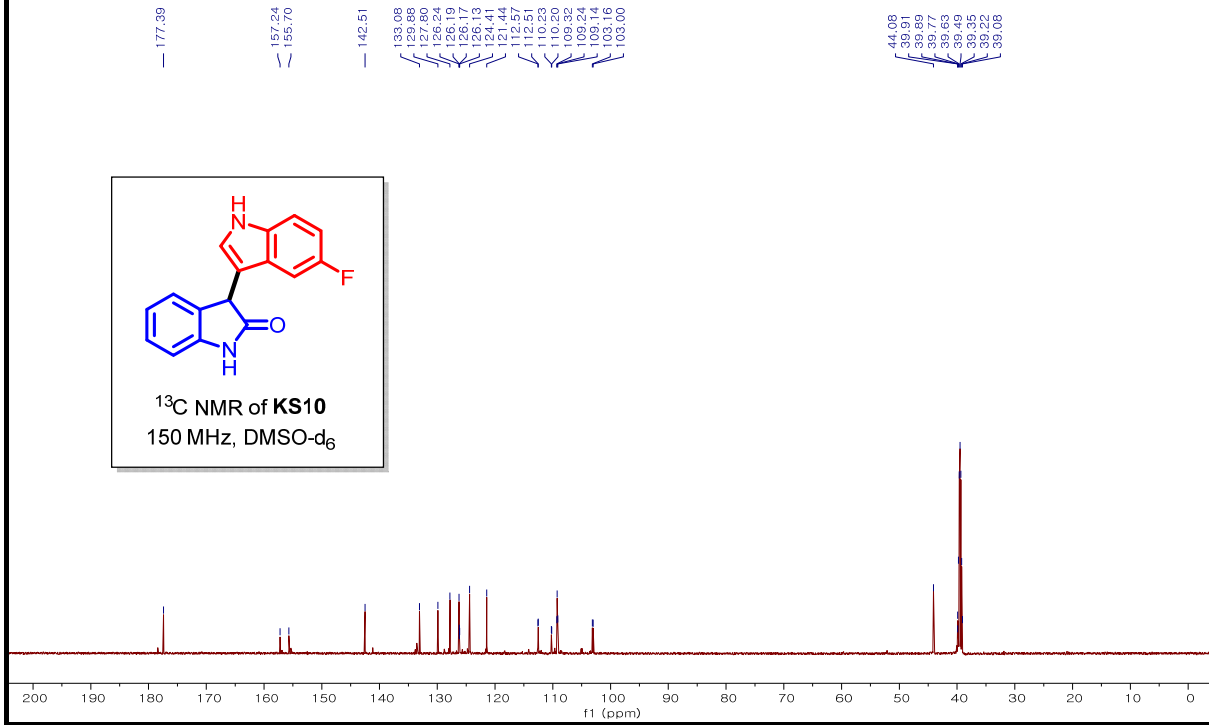
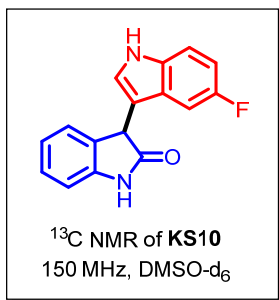
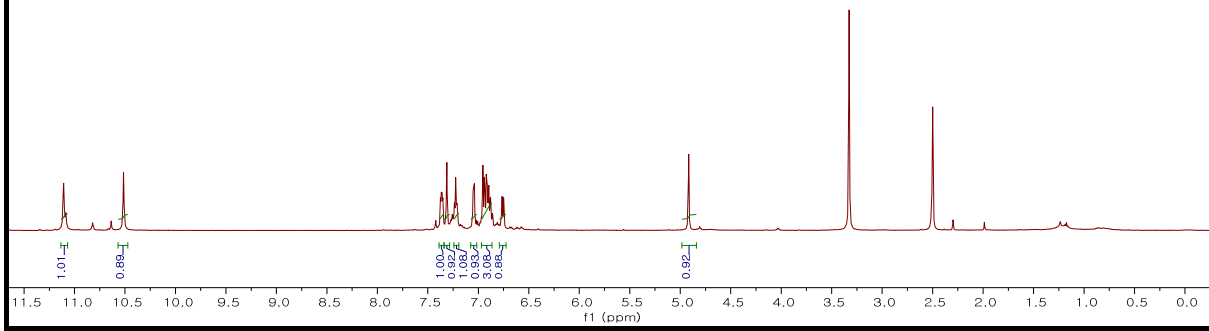
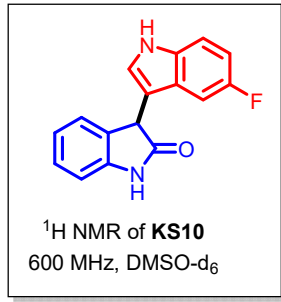


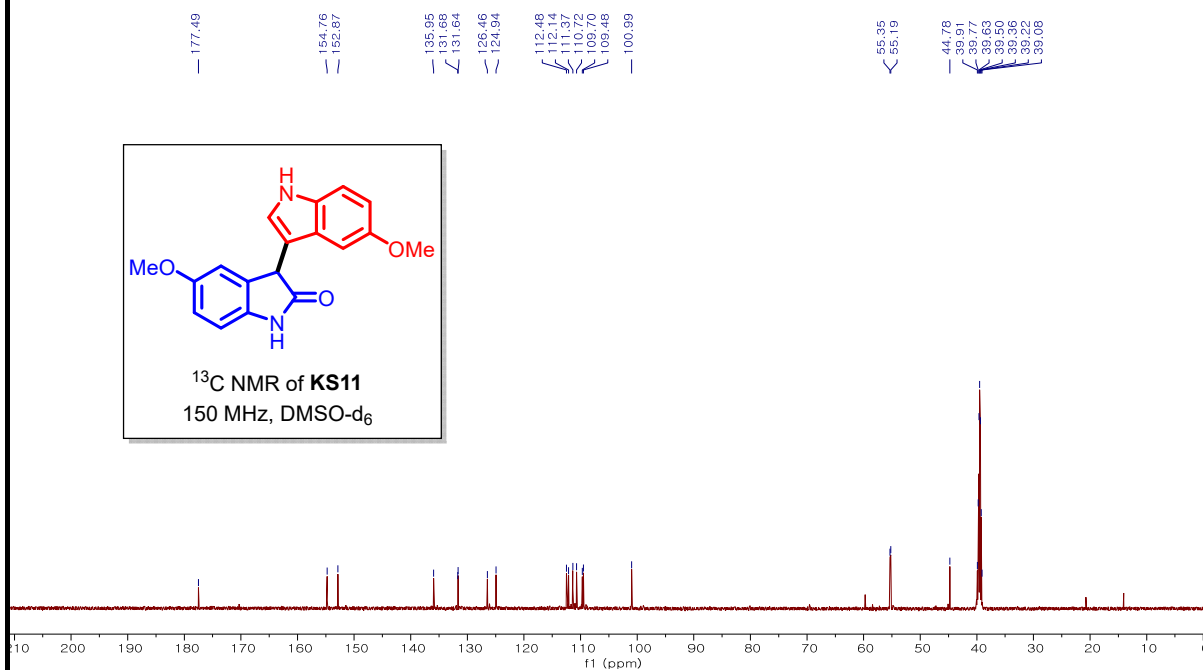
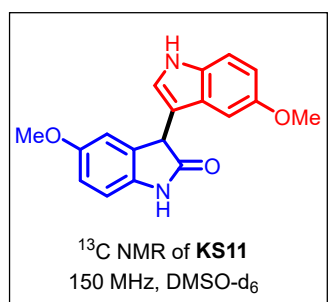
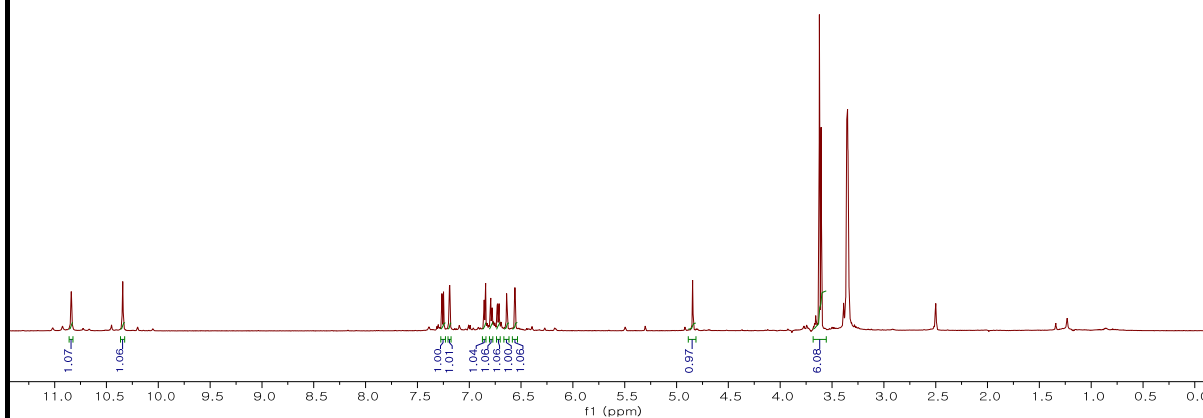
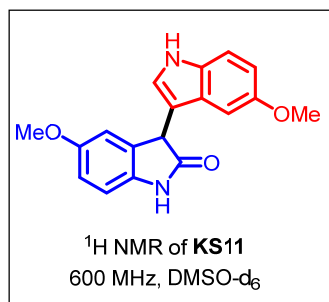


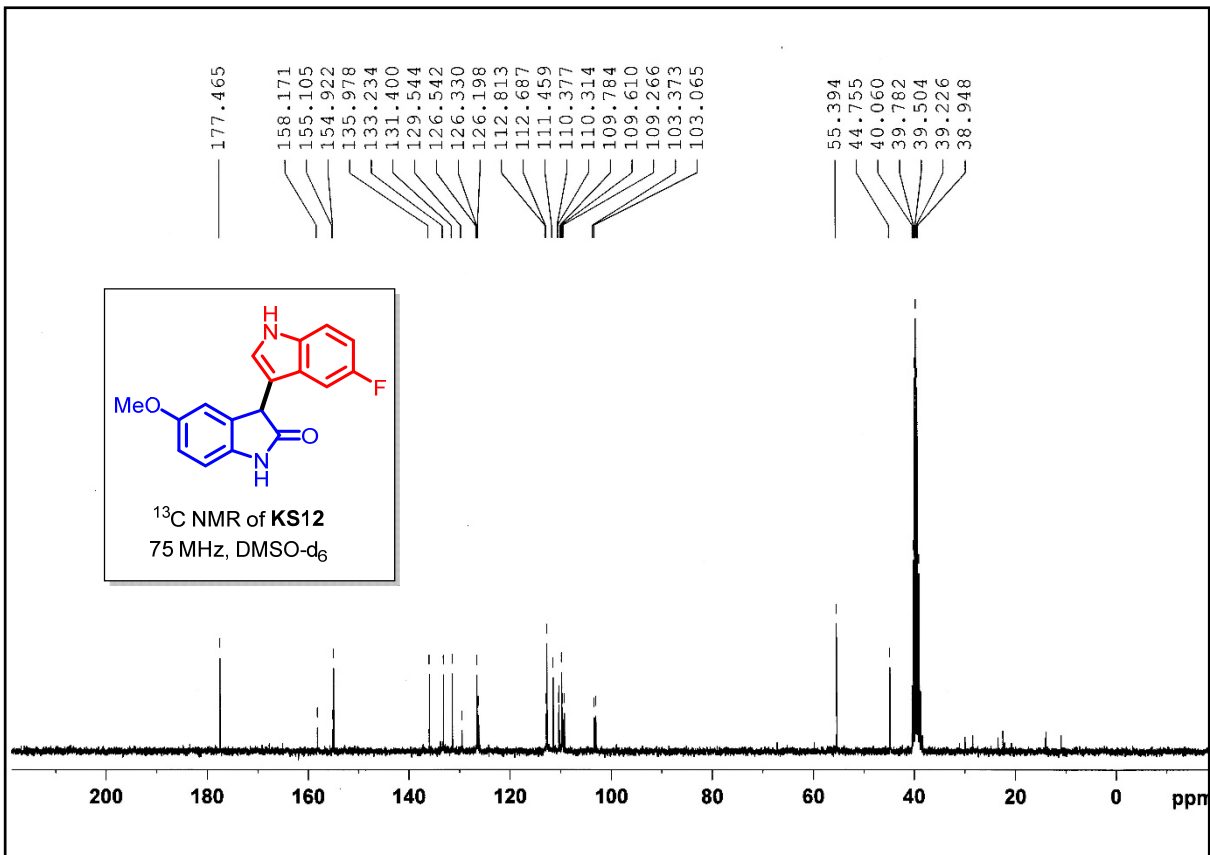
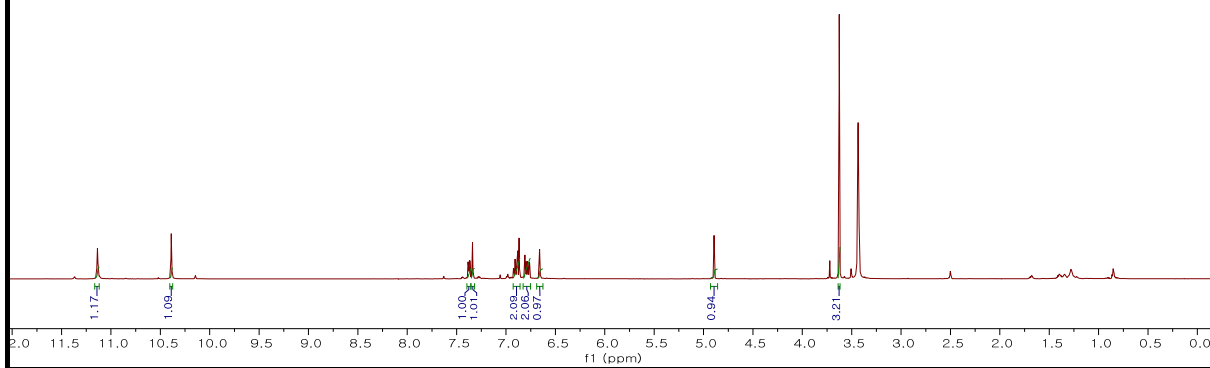
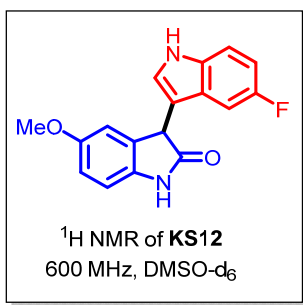


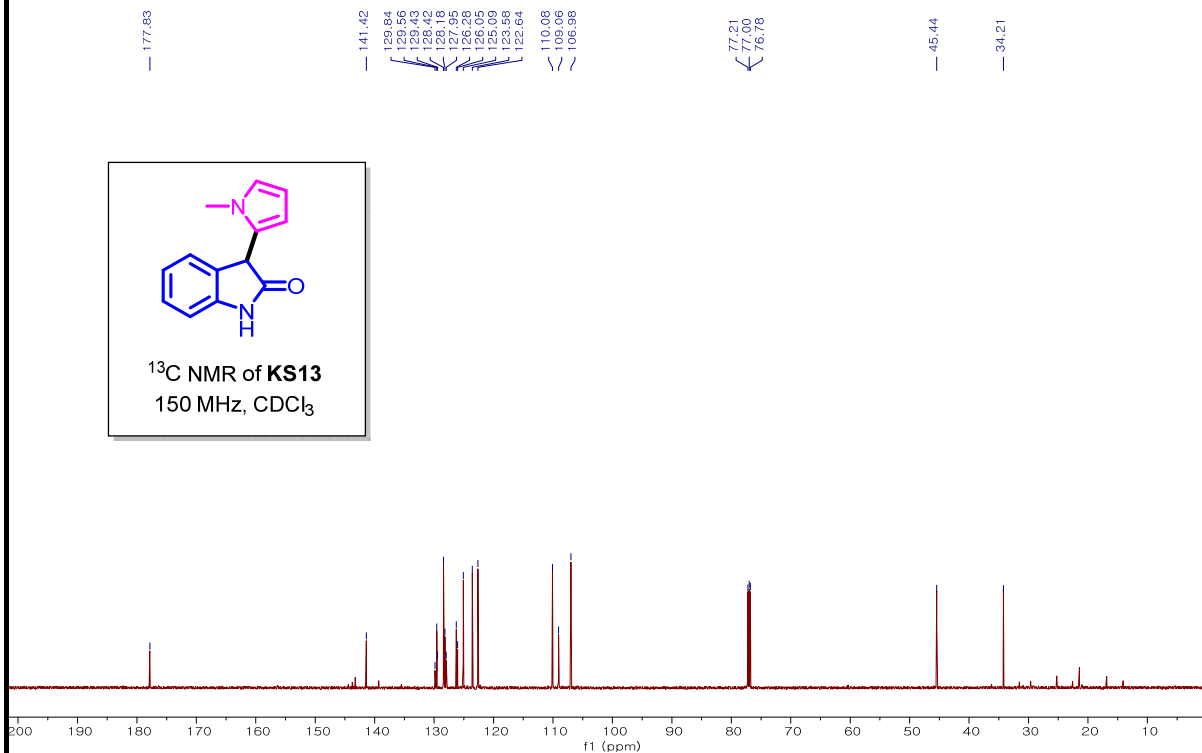
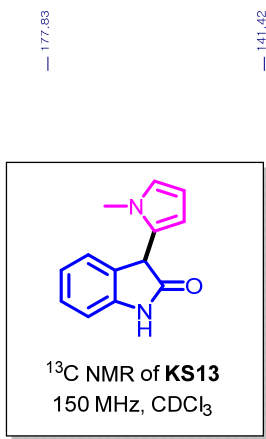
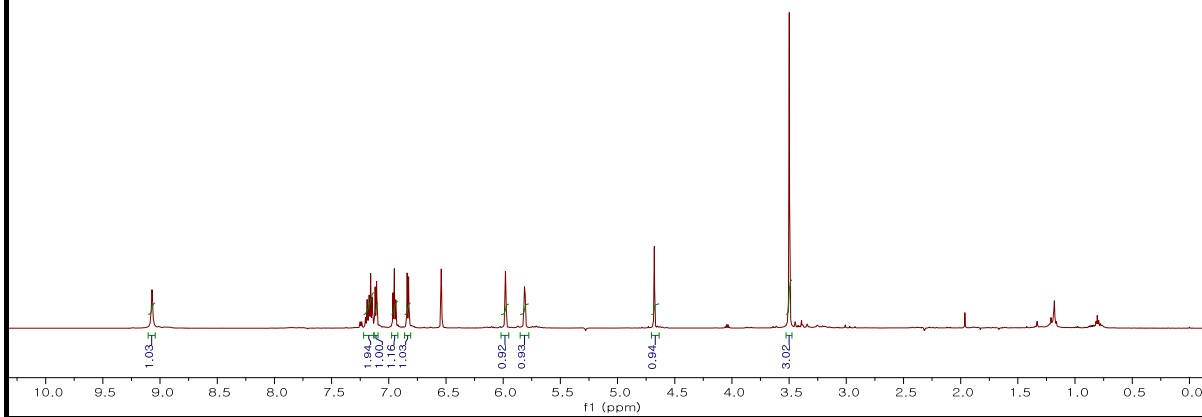
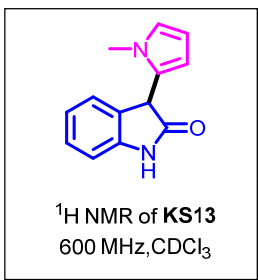


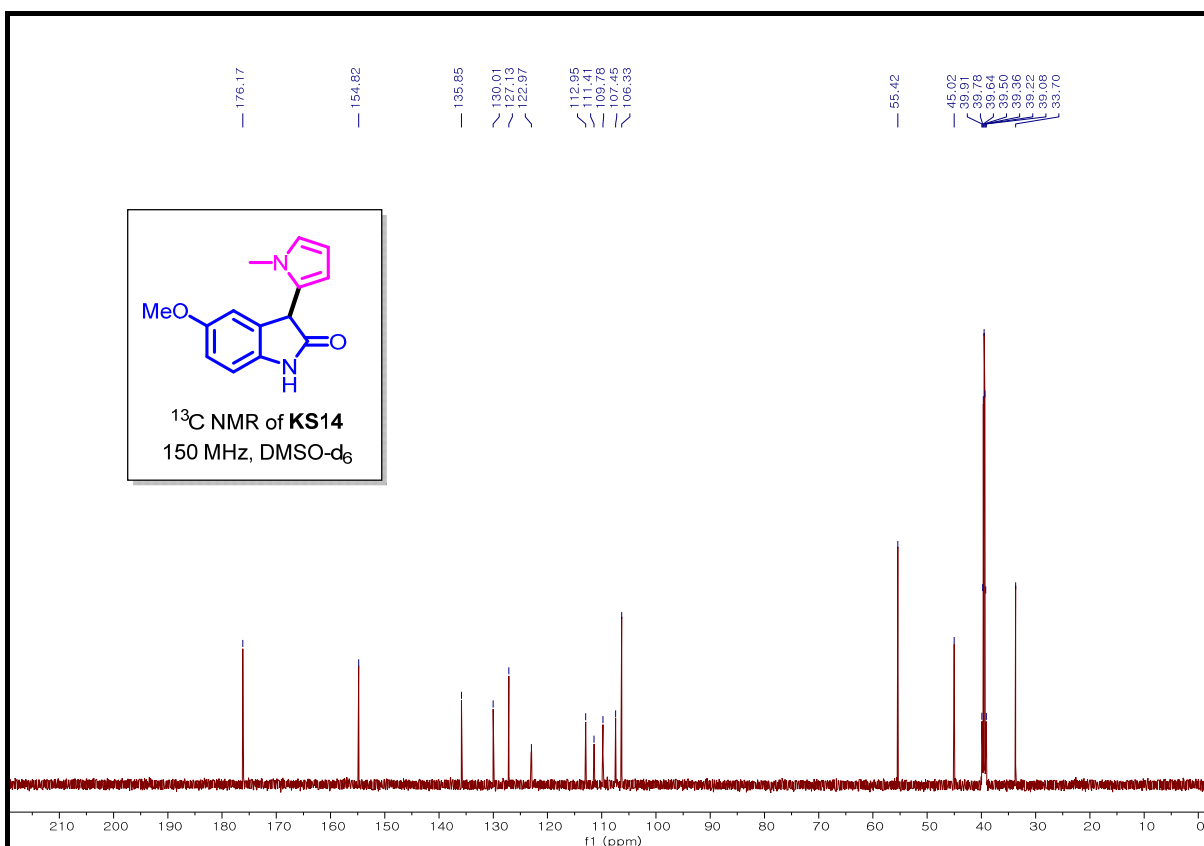
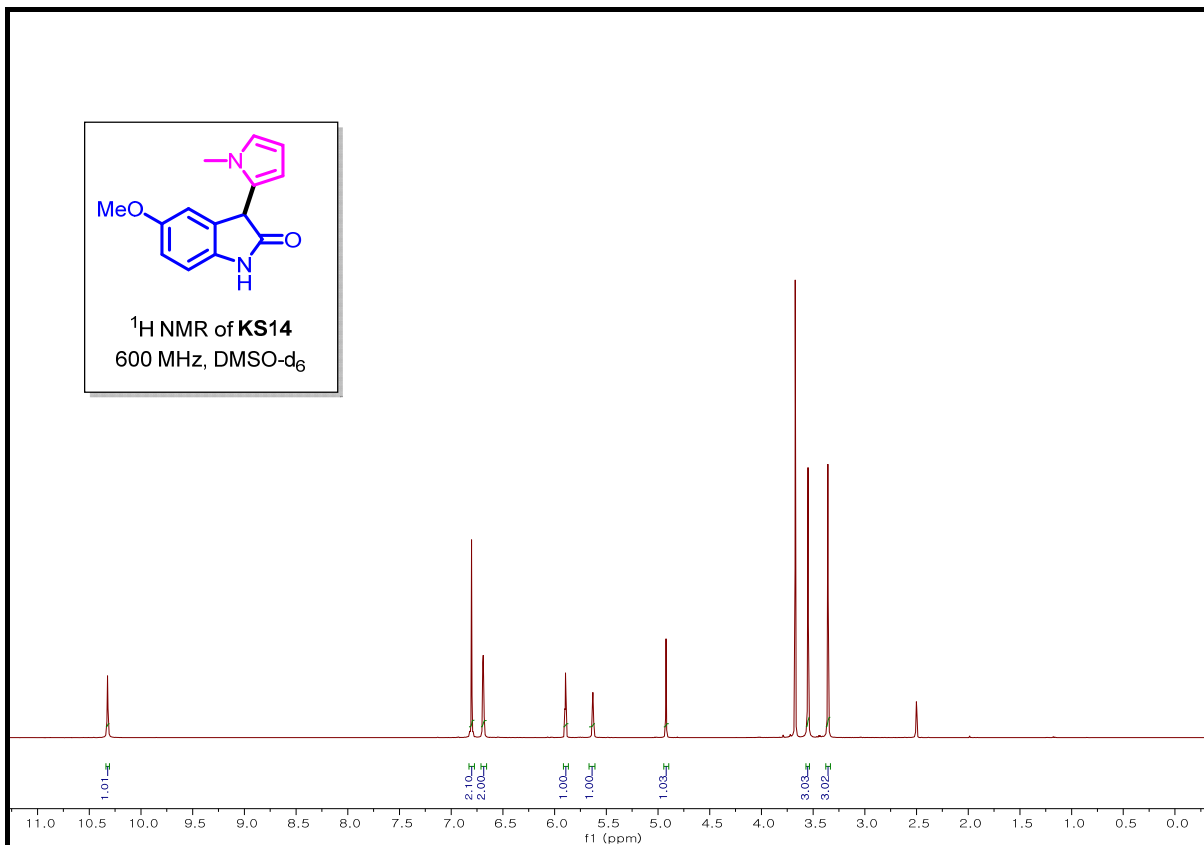


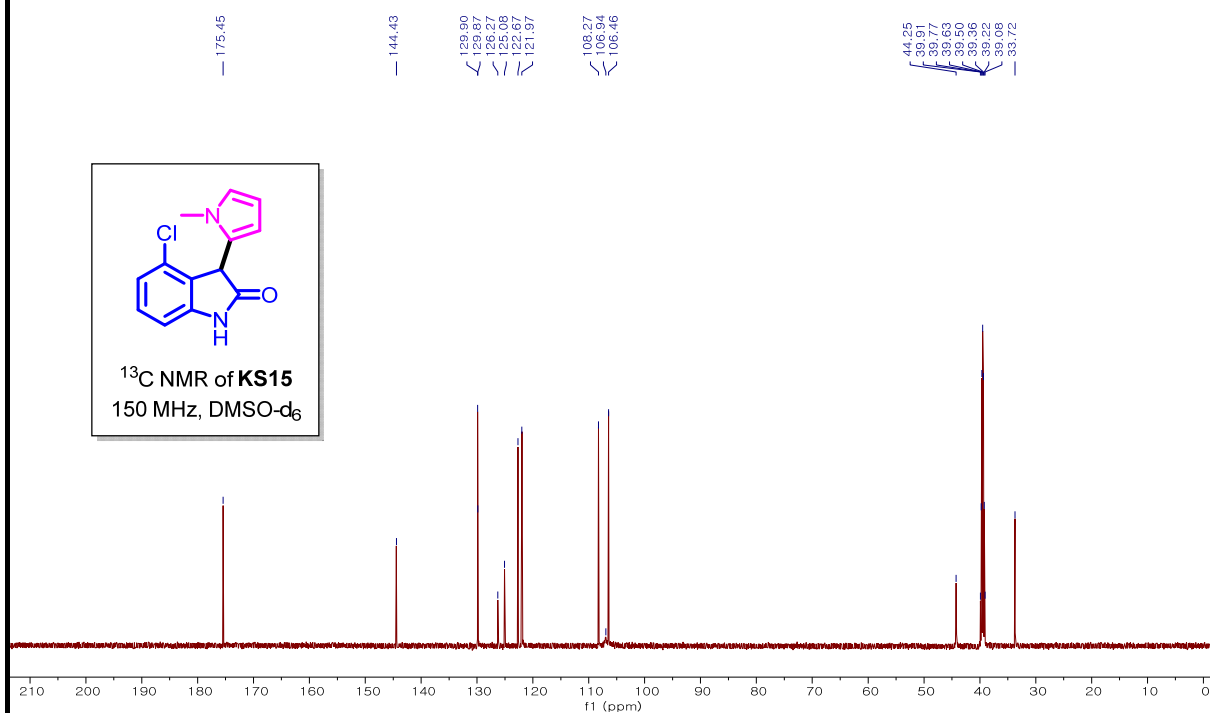
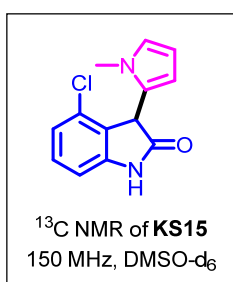
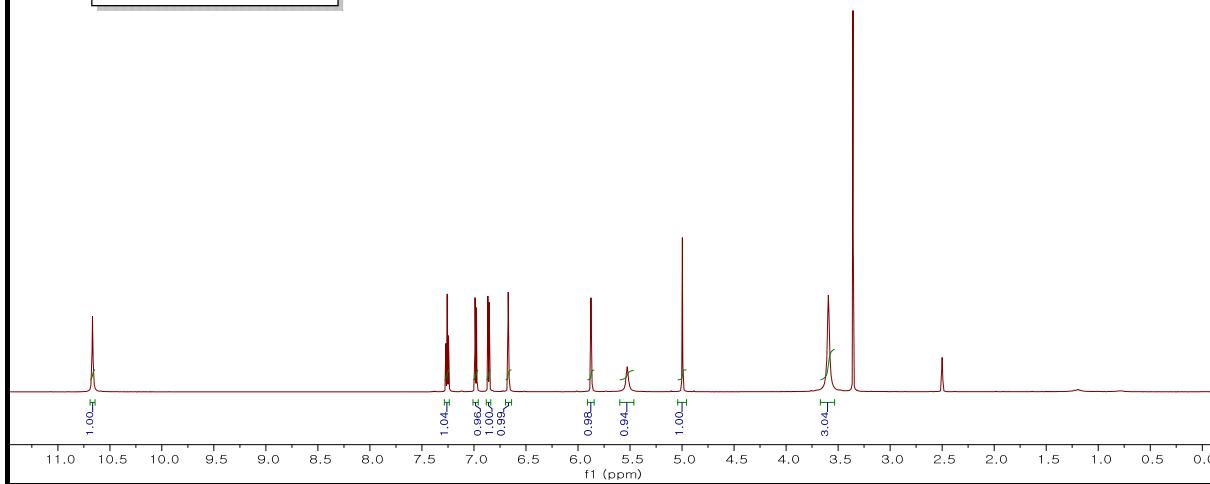
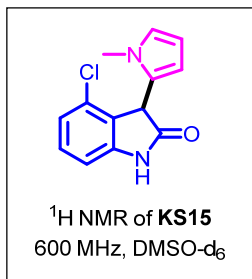




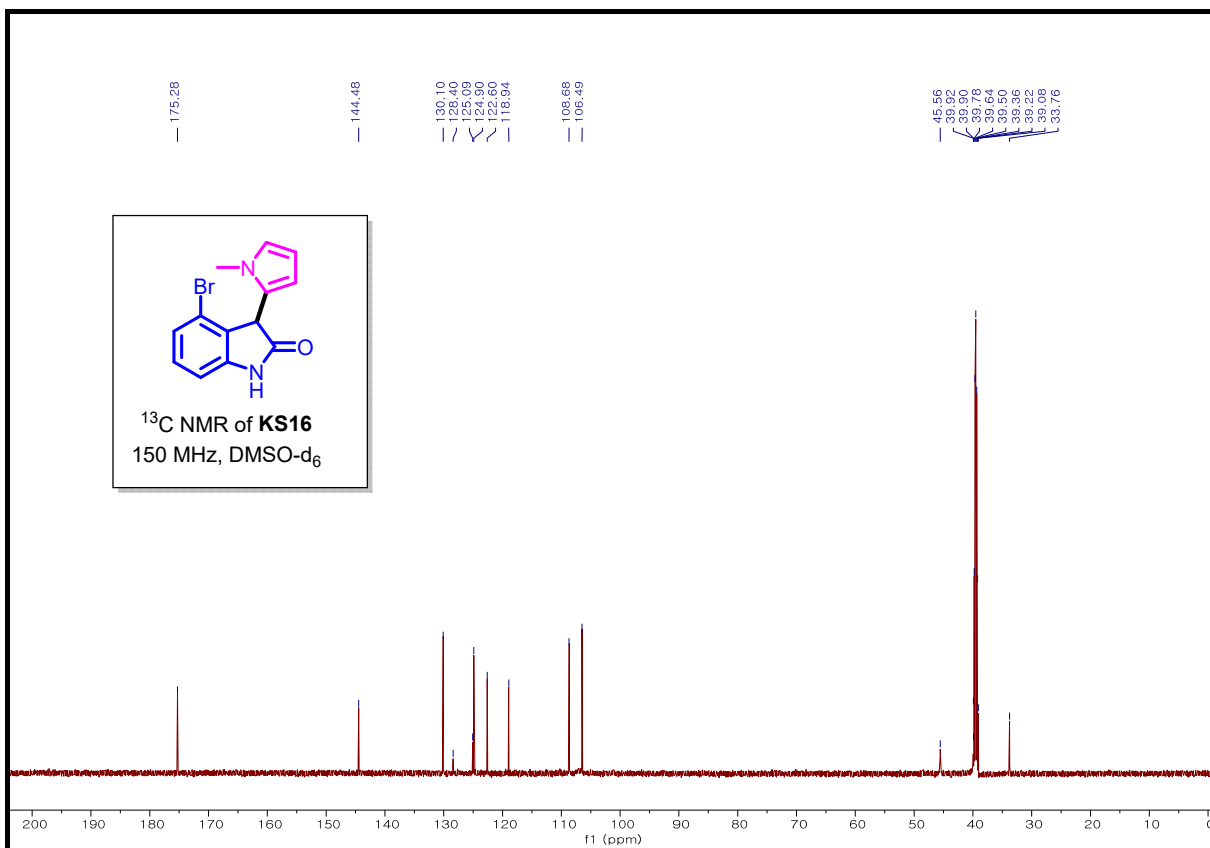
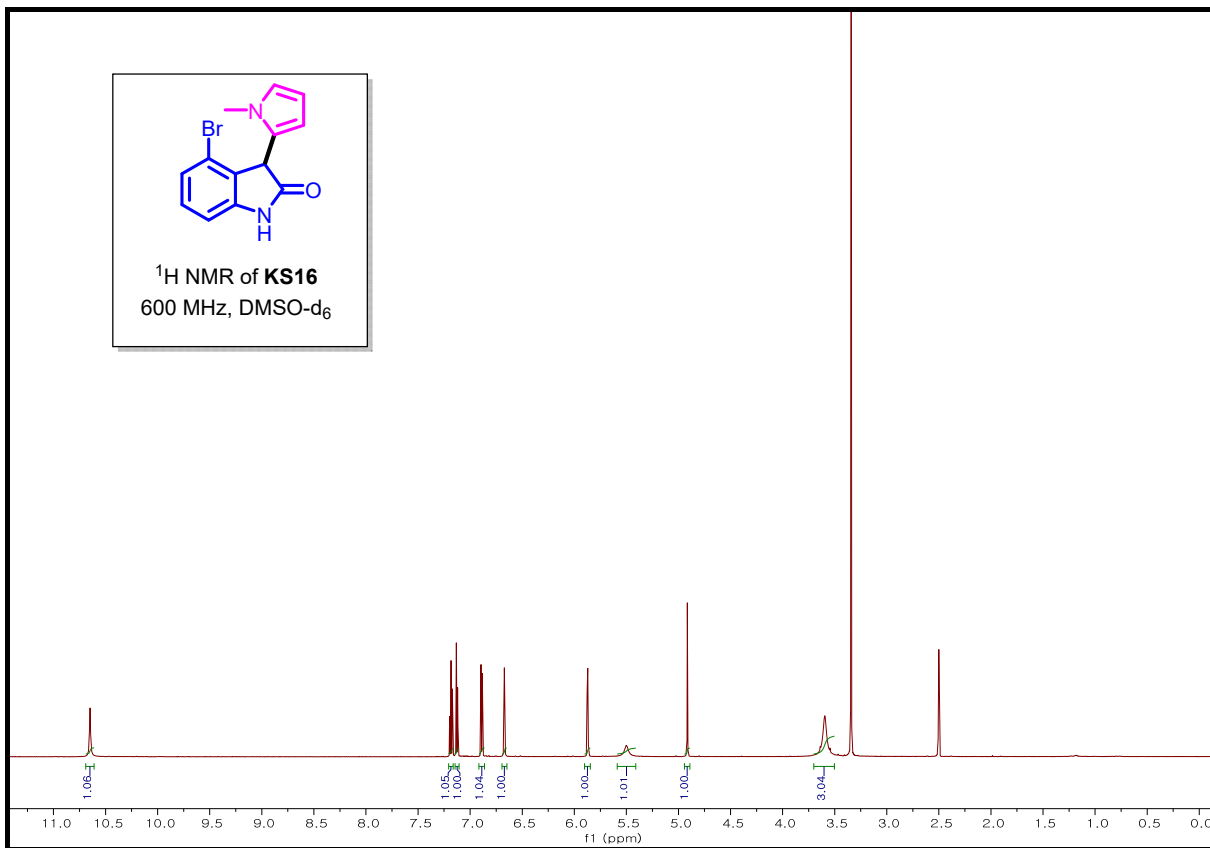


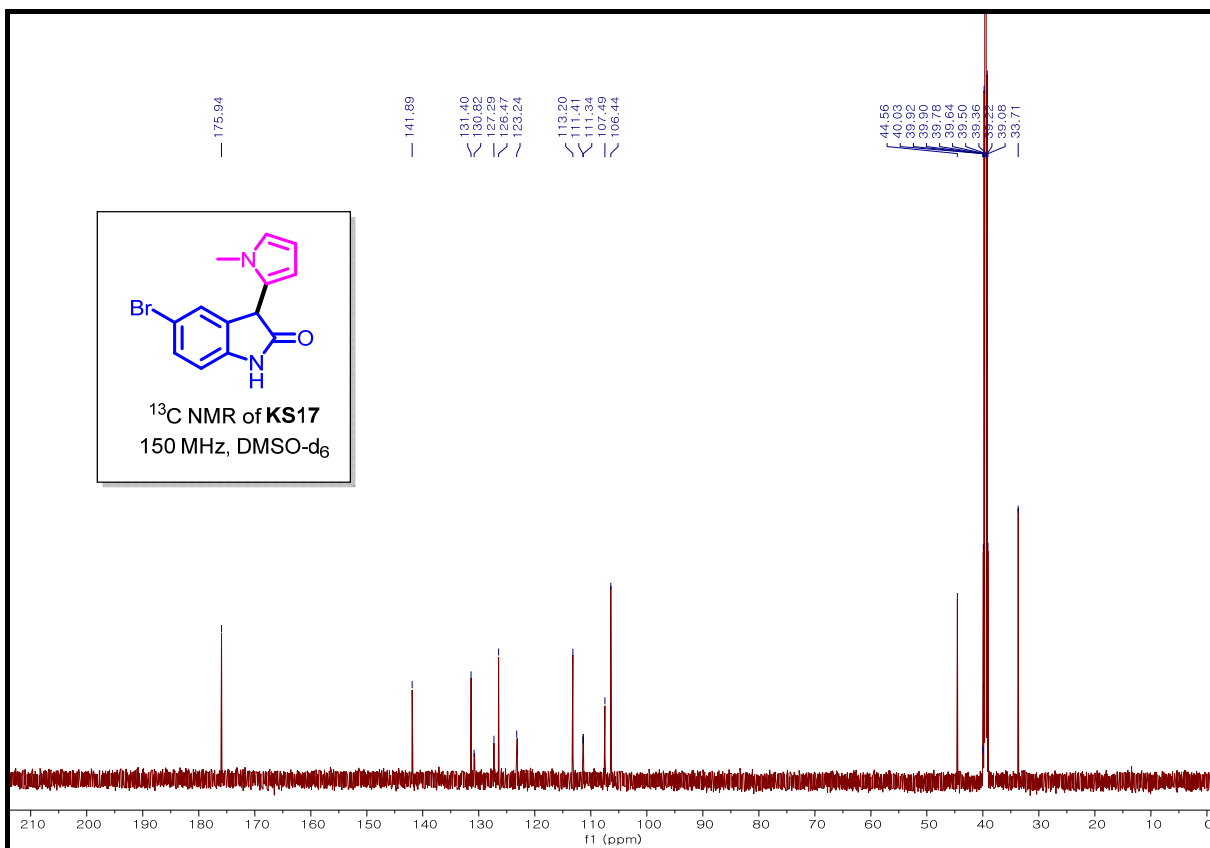
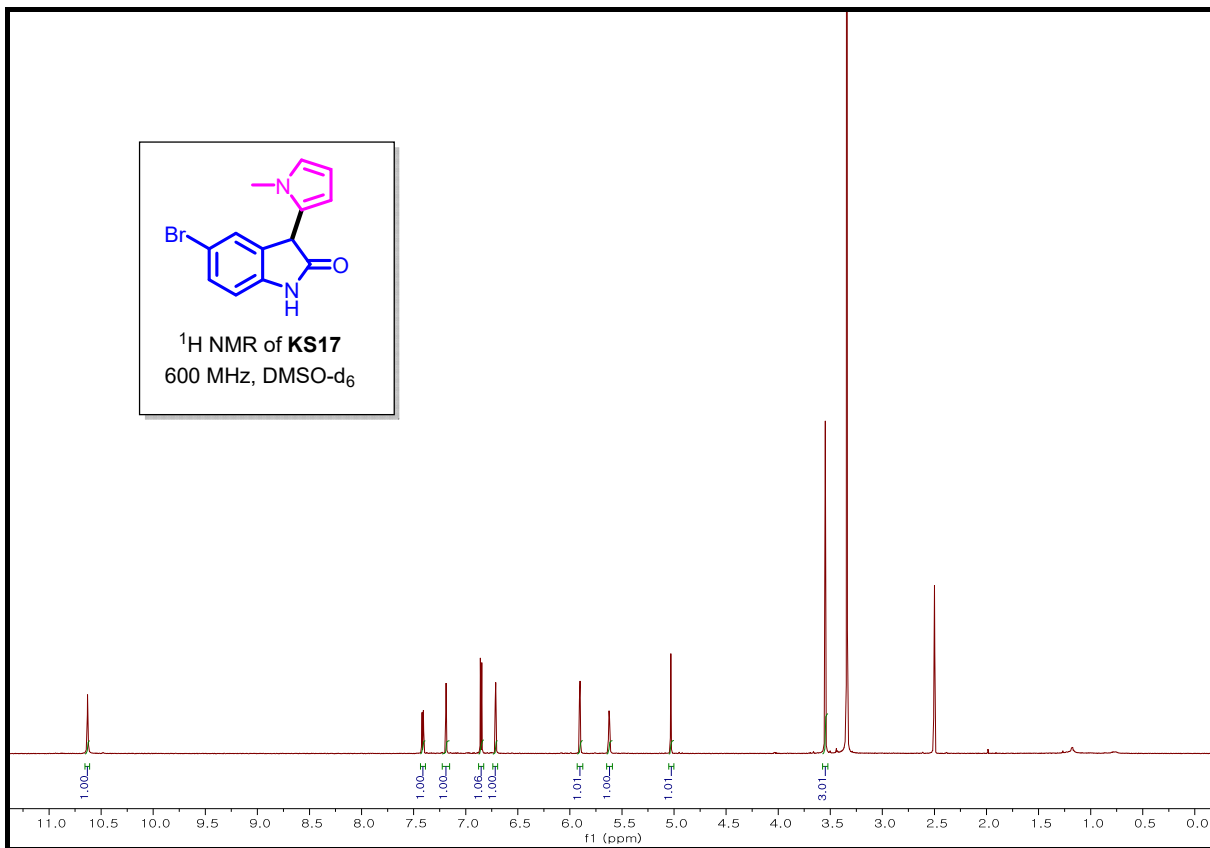


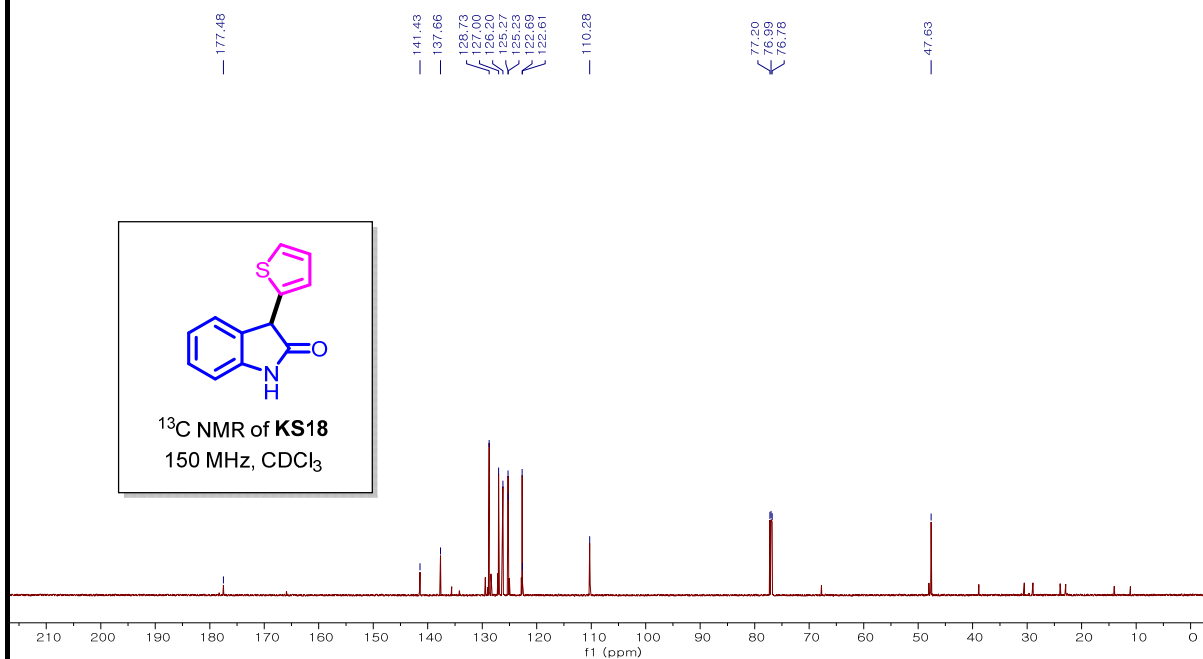
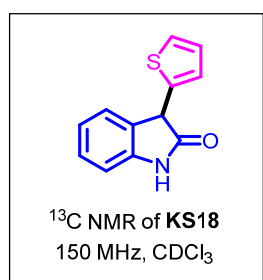
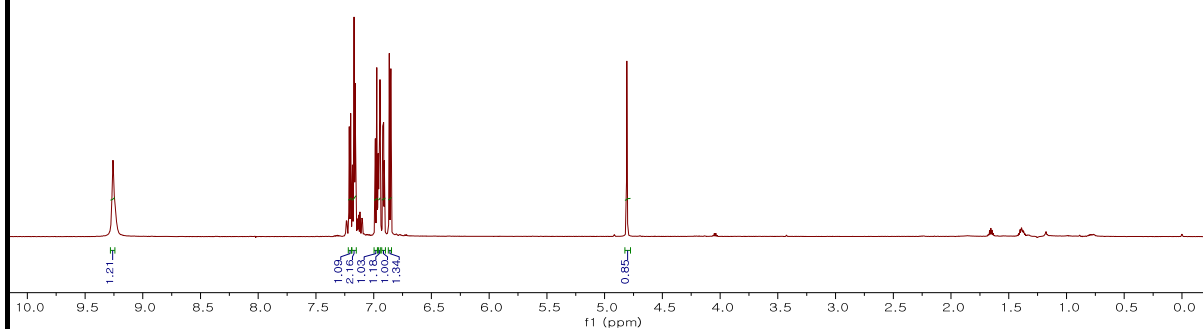
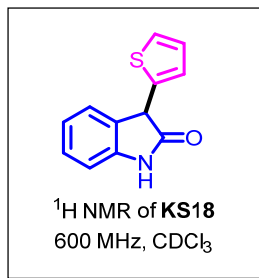


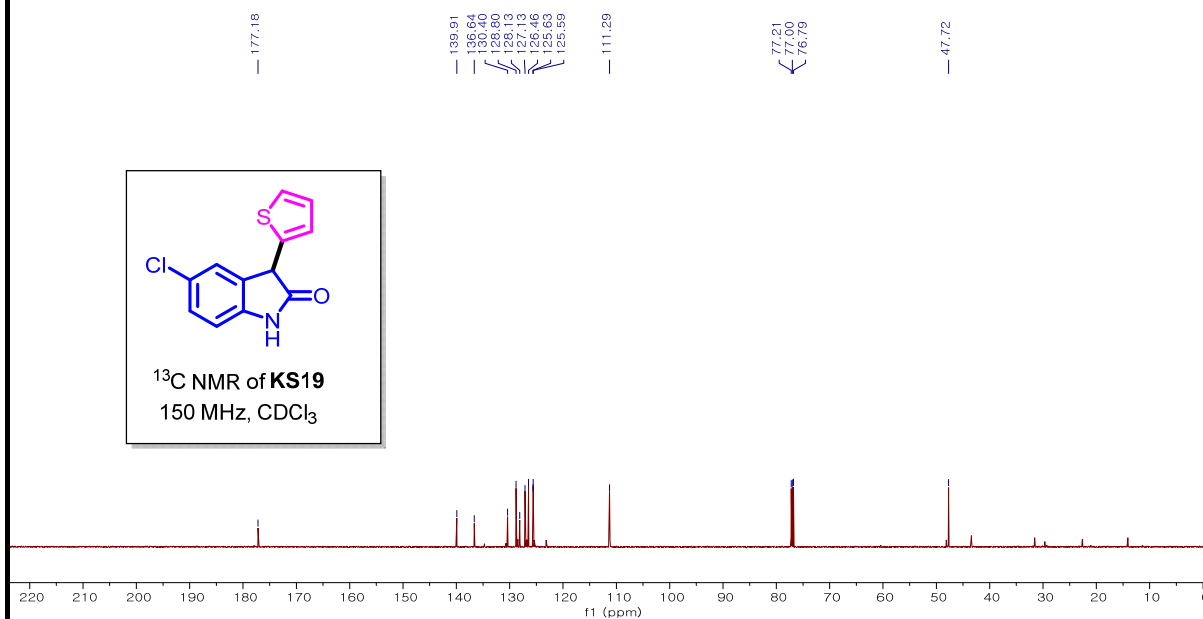
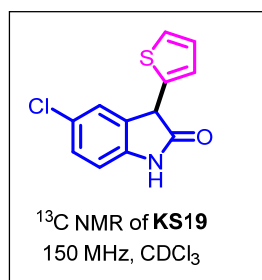
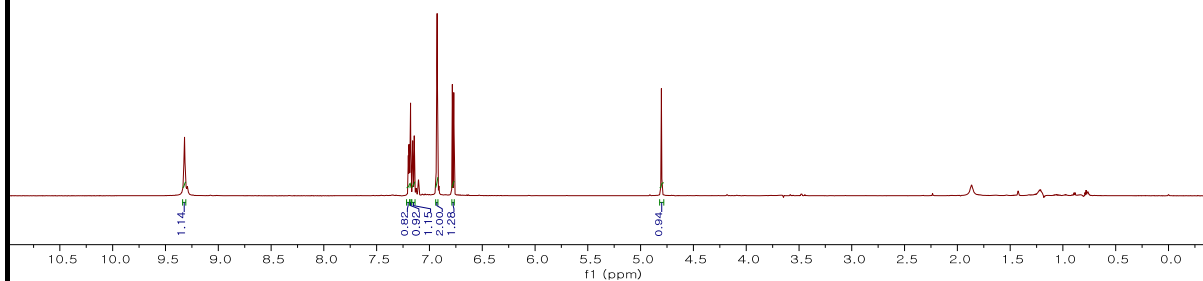
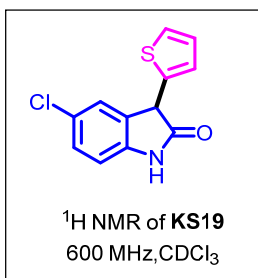


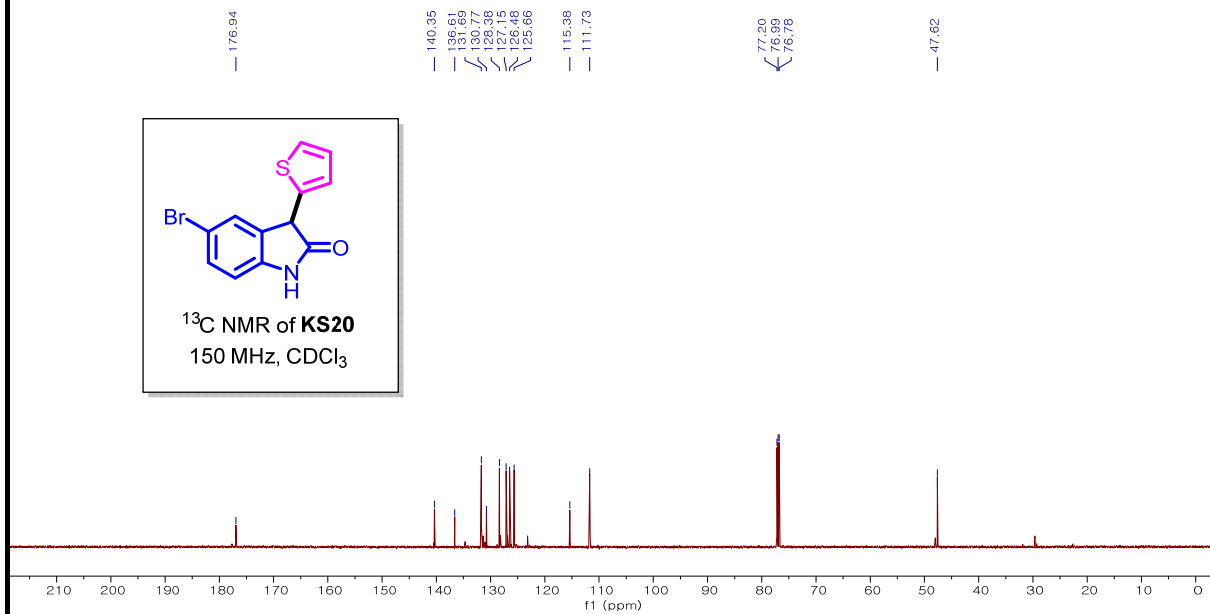
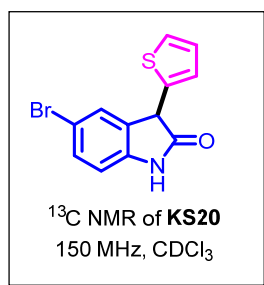
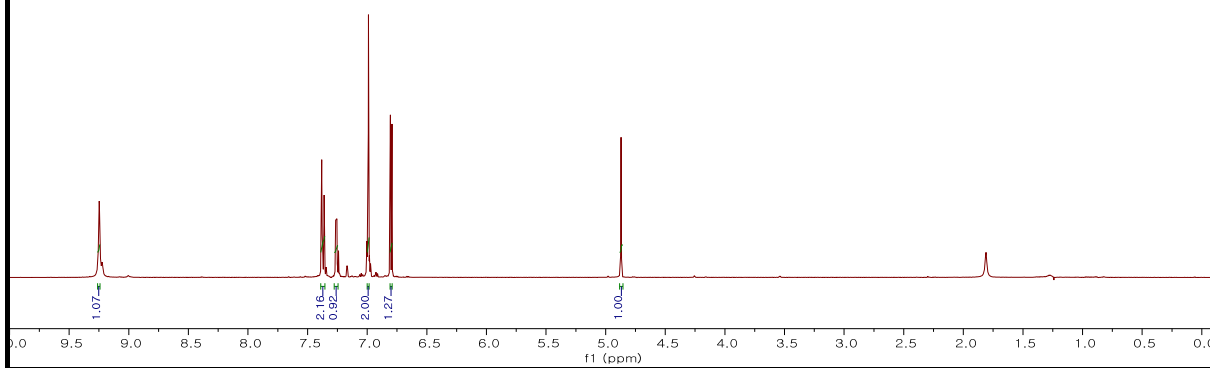
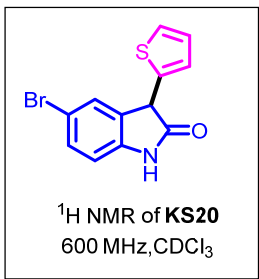












Copy of GC Spectrum of compound KS16

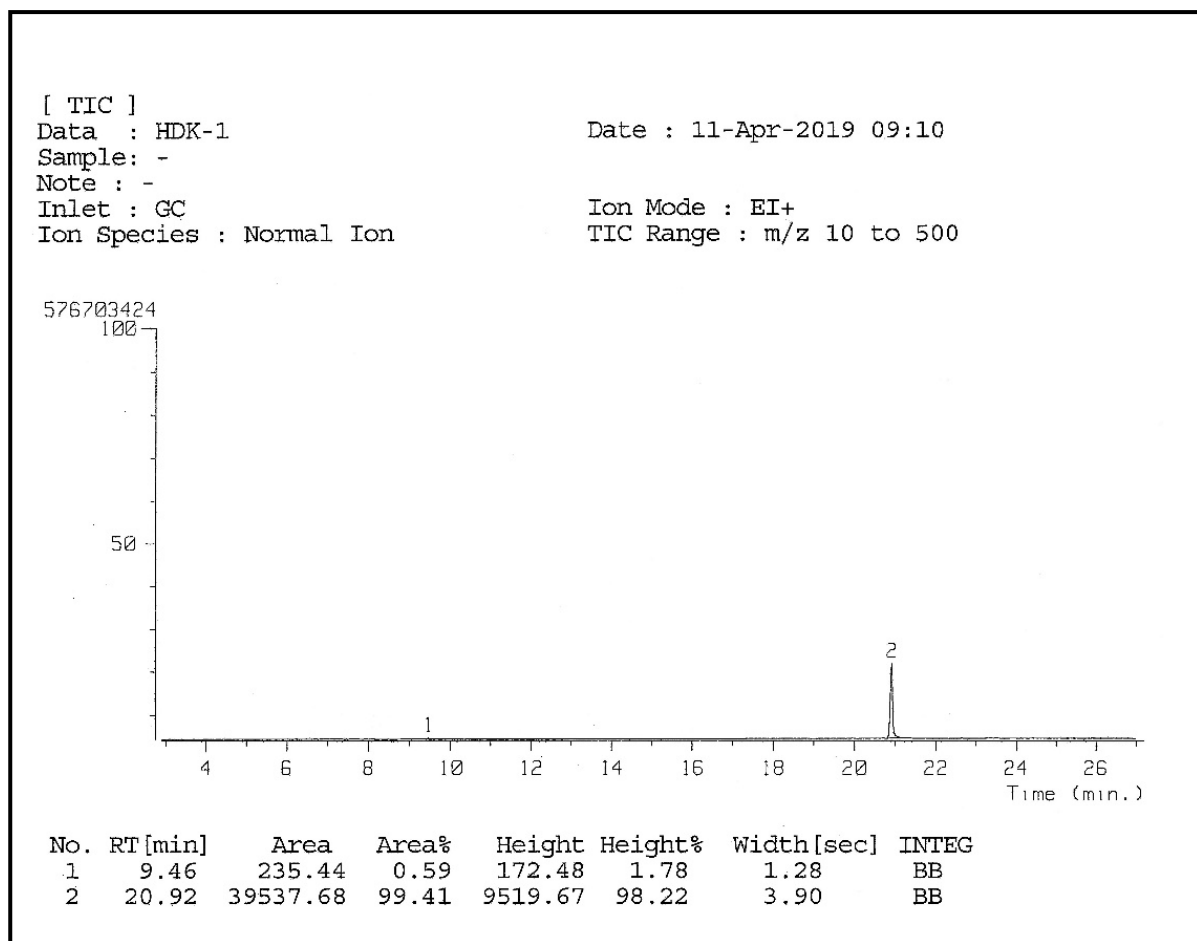


Figure S1. Gas chromatogram of the compound KS16.