

Supplementary Figures

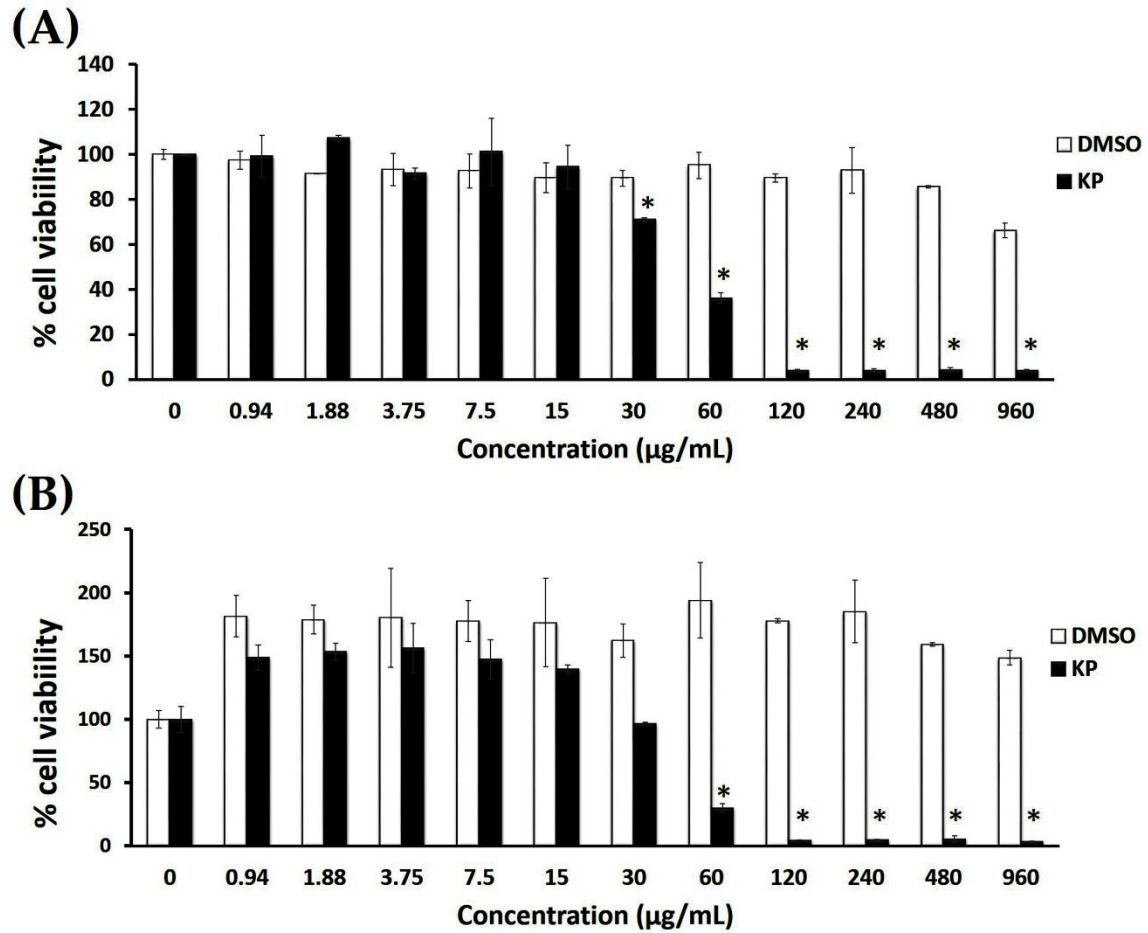


Figure S1. The cytotoxicity effect of different concentrations of KP ethanol extract on HeLa cells without EGF **(A)** and with 100 ng/mL EGF **(B)**. DMSO was used as a vehicle control. All data were from 3 independent experiments and reported as means \pm SD of each quadruplicate $*p < 0.05$ compared to the untreated control (0 $\mu\text{g/mL}$).

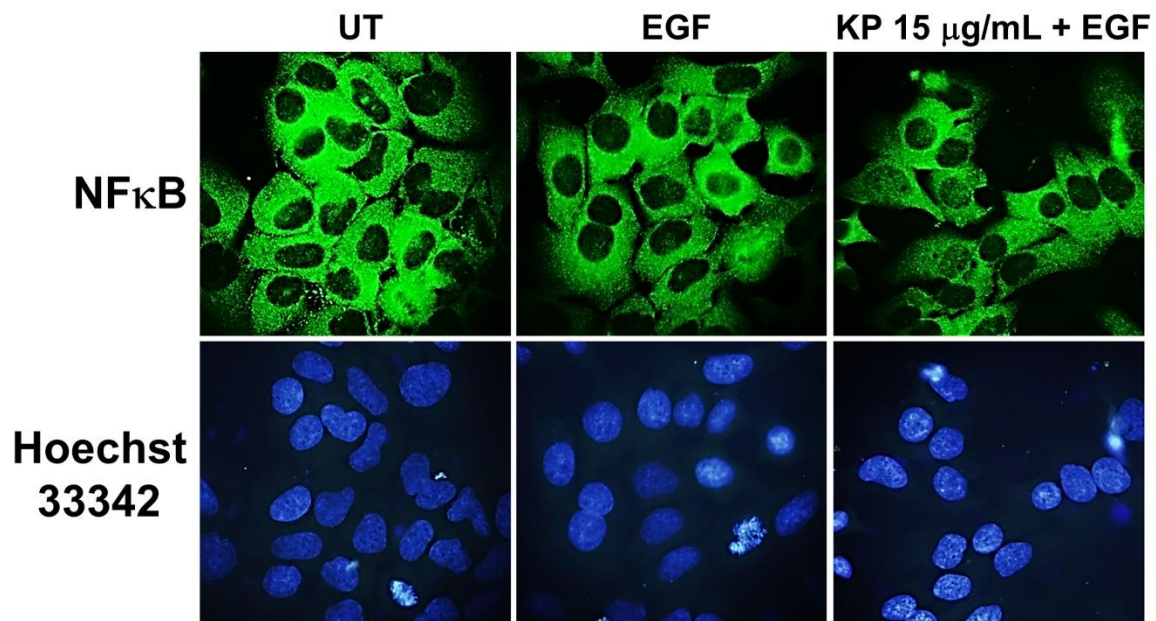


Figure S2. The effects of KP on nuclear localization of NF- κ B in HeLa cells (A) Representative images from immunofluorescence study showing NF- κ B staining (green) in untreated cells (UT), EGF-treated for 24 h, or HeLa cells treated with KP at 15 $\mu\text{g}/\text{mL}$ and EGF for 24 h. Nuclei (blue) were counterstained with 10 $\mu\text{g}/\text{mL}$ of Hoechst 33342. Micrographs were captured at 40X magnification. Data are representatives of three replicates.