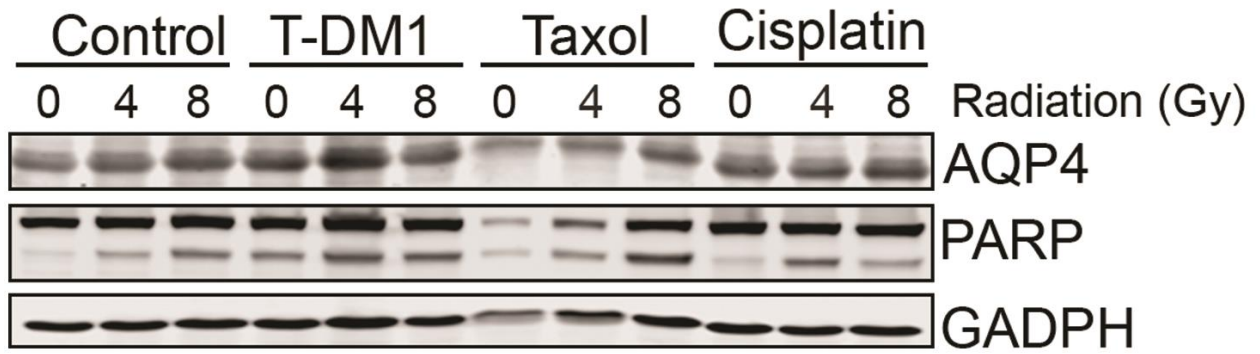


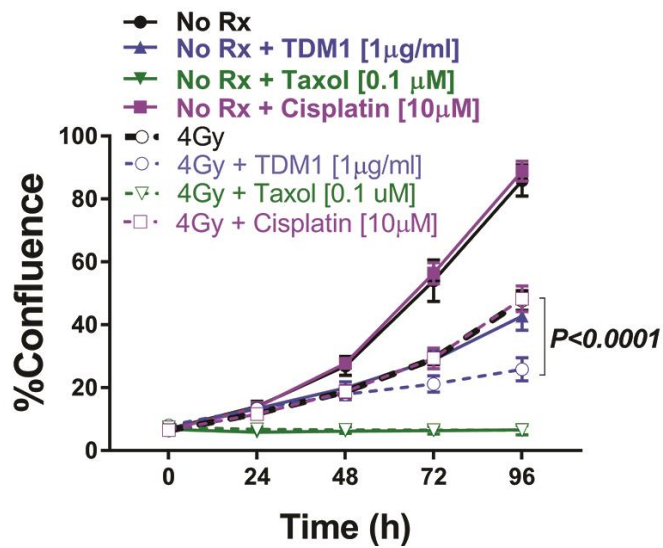
**Supplementary Figure 1:** (A) Representative Western blot showing regulation of aquaporin 4 (Aqp4) and Poly (ADP-ribose) polymerase (PARP) in THV cells treated with 0, 4 or 8 Gy alone or in combination with T-DM1 (1 $\mu$ g/ml), paclitaxel (0.1 $\mu$ M) or cisplatin (10 $\mu$ M). Cell lysates were analyzed 48hr later. GAPDH was used as loading control. (B) THV astrocytes were treated with 0 (No RT) or 4 Gy RT alone or in combination with T-DM1, paclitaxel or cisplatin and cell confluence was measured over time using live imaging Incucyte system. THV cells are highly sensitive to paclitaxel and remain cytostatic. Graph shows mean confluence over time  $\pm$  SEM for each time point. Data was analyzed using two-way ANOVA followed by Dunn's post-hoc analysis. Adjusted p values are shown. (C) Cells were plated in coverslips and treated with indicated doses of RT, alone or in combination with paclitaxel or cisplatin. Cells were stained for Aqp4 and cell size measure in at least 50 individual cells per treatment in two independent experiments.

### **Supplementary Figure 1**

A



B



C

