

## Cell Line Authentication – STR Profiling

Sample Type: Cell Line

Sample from: The First Affiliated Hospital of Zhengzhou University,  
Zhengzhou 450052, China

Testing Method: STR Genotyping

Report Time: August 10, 2019

---

## Cell Line Authentication – STR Profiling Report

---

Sample code

Table 1. Sample Code

Customer's code	Company Code
2	20190810-03

Sample Number: 1

Sample Type: Cell line

Testing Type: STR

Sample From: The First Affiliated Hospital of Zhengzhou University

Testing Method:

DNA was extracted by a commercial kit from CORNING (AP-EMN-BL-GDNA-250G). The twenty STRs including Amelogenin locus were amplified by six multiplex PCR and separated on ABI 3730XL Genetic Analyzer. The signals were then analyzed by the software GeneMapper.

Data Interpretation:

Cell lines were authenticated using Short Tandem Repeat (STR) analysis as described in 2012 in ANSI Standard (ASN-0002) by the ATCC Standards Development Organization (SDO) and in Capes-Davis et al., Match criteria for human cell line authentication: Where do we draw the line? Int J Cancer.2013;132(11):2510-9.

Test Results:

### 1. Result

Table 2. Matching information on the cell lines

Sample Code	Multi-allele	Cell line matched	Cell Bank	Percentage
20190810-03-02	NO	HELA(CHANG LIVER)	DSMZ	9/9

- **Multi-allele means some STR contain more than two loci.**

### 2. Sample Description

20190810-03-02 The DNA of the cell lines found to basic match the type of cell lines in a cell line

## STR and Amelogenin Genotyping Results of Cell line 20190810-03-02

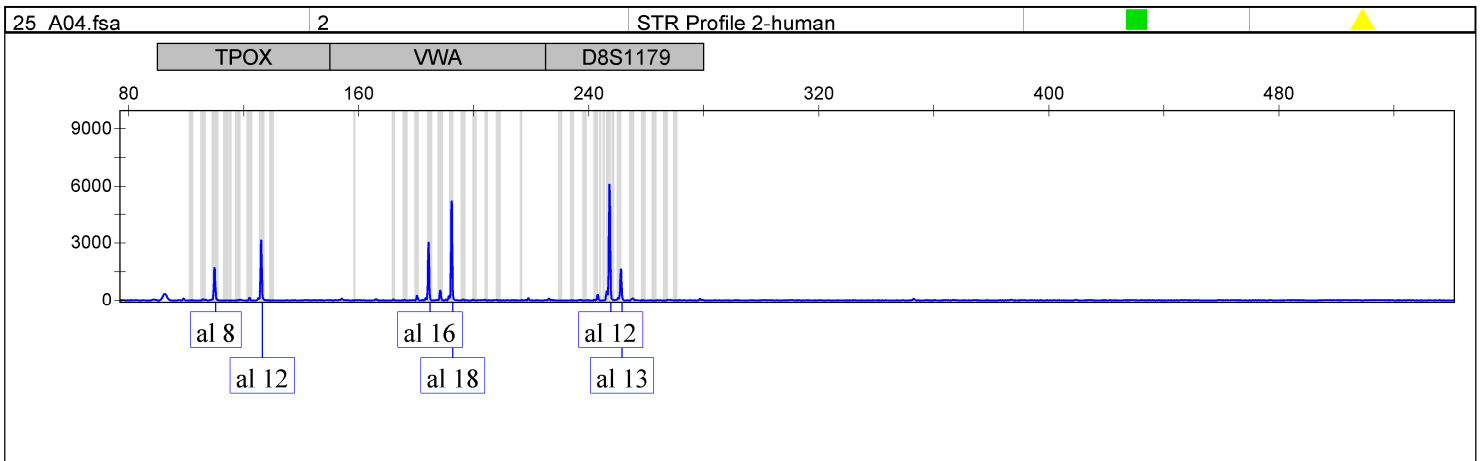
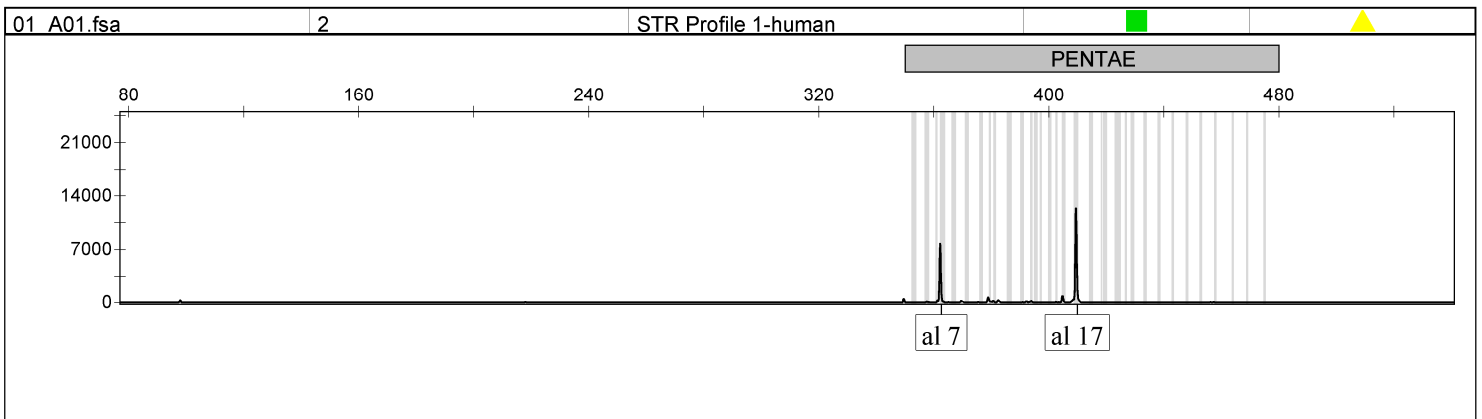
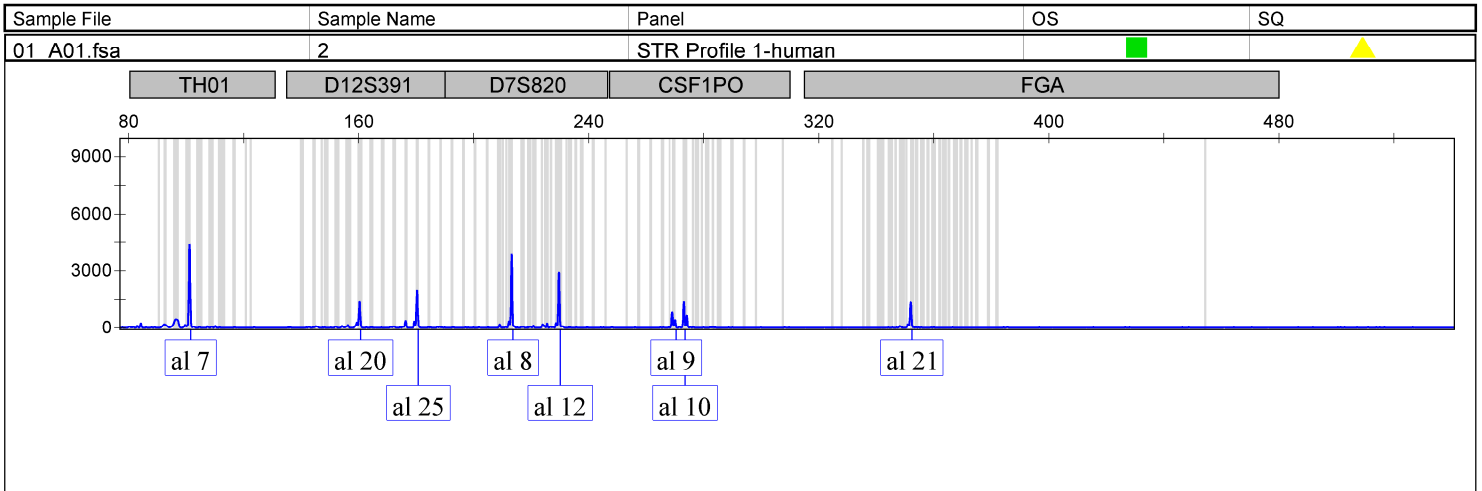
Loci	Sample:2			Cell Bank information: HELA (Changliver)		
	Allele1	Allele2	Allele3	Allele1	Allele2	Allele3
D5S818	11	12		11	12	
D13S317	12	13.3		12	13.3	
D7S820	8	12		8	12	
D16S539	9	10		9	10	
VWA	16	18		16	18	
TH01	7	7		7	7	
AMEL	X	X		X	X	
TPOX	8	12		8	12	
CSF1PO	9	10		9	10	
D12S391	20	25				
FGA	21	21				
D2S1338	17	17				
D21S11	27	28				
D18S51	16	16				
D8S1179	12	13				
D3S1358	15	18				
D6S1043	18	19				
PENTAE	7	17				
D19S433	13	14				
PENTAD	8	15				

Others:

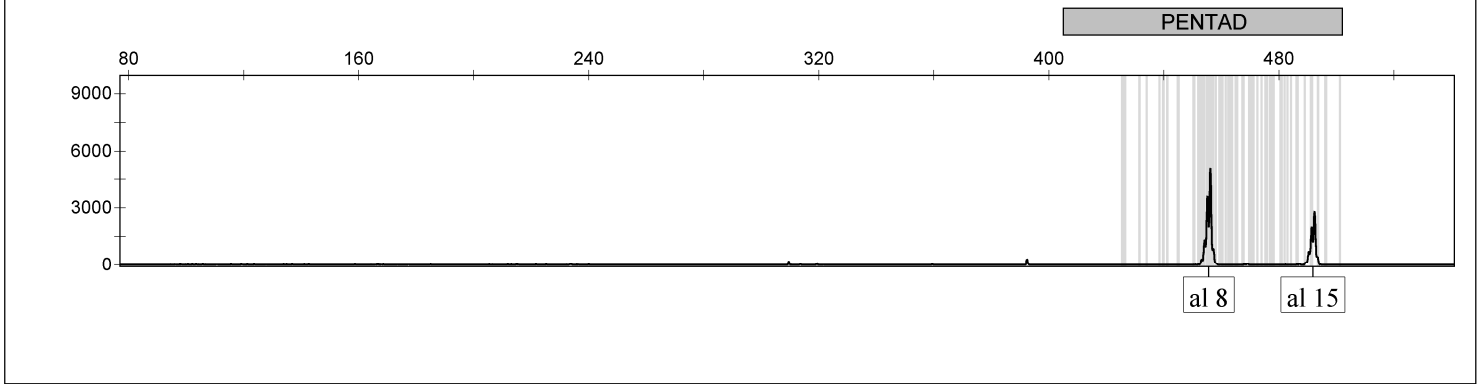
1. Genotyping Strategy and Site Distribution

Attached Table. Experimental Strategy and Sites

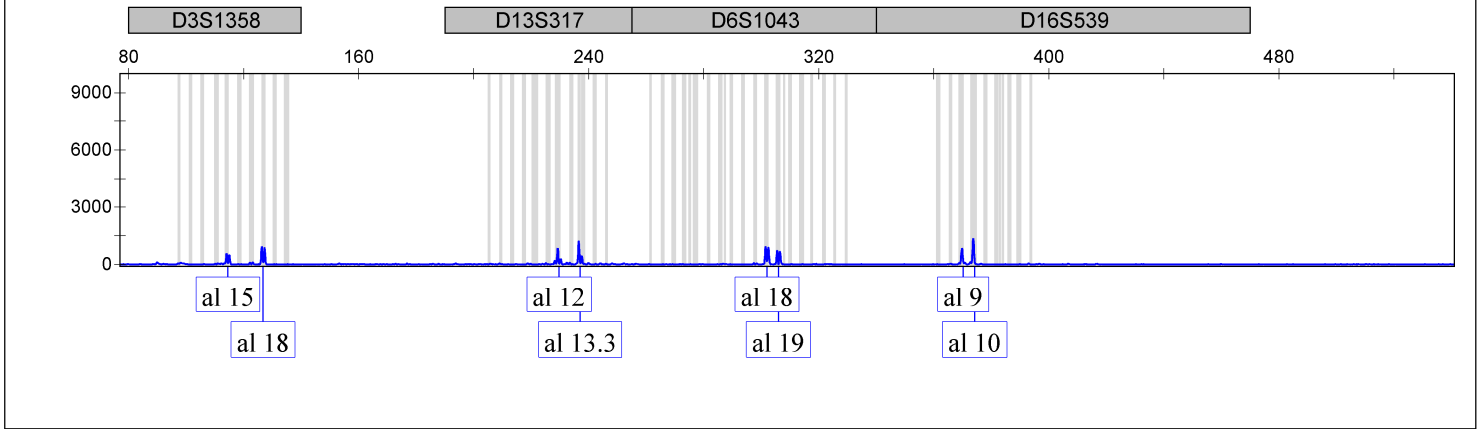
	<b>Strategy 1</b>	<b>Strategy 2</b>	<b>Strategy 3</b>	<b>Strategy 4</b>
1	TH01	TPOX	D3S1358	AMEL
2	D12S391	VWA	D13S317	D5S818
3	D7S820	D8S1179	D6S1043	D2S1338
4	CSF1PO	PENTAD	D16S539	D21S11
5	FGA		D19S433	D18S51
6	PENTAE			



Sample File	Sample Name	Panel	OS	SQ
25_A04.fsa	2	STR Profile 2-human	<span style="color: green;">■</span>	<span style="color: yellow;">▲</span>



Sample File	Sample Name	Panel	OS	SQ
41_A06.fsa	2	STR Profile 3-human	<span style="color: green;">■</span>	<span style="color: yellow;">▲</span>



Sample File	Sample Name	Panel	OS	SQ
41_A06.fsa	2	STR Profile 3-human	<span style="color: green;">■</span>	<span style="color: yellow;">▲</span>

