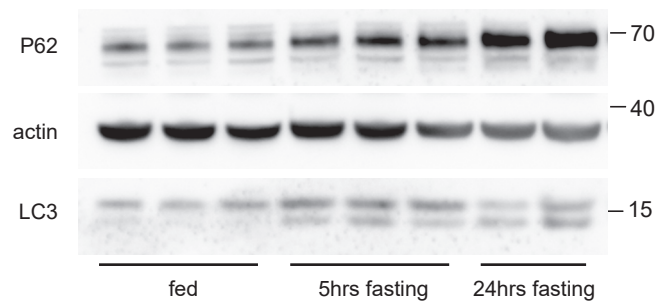


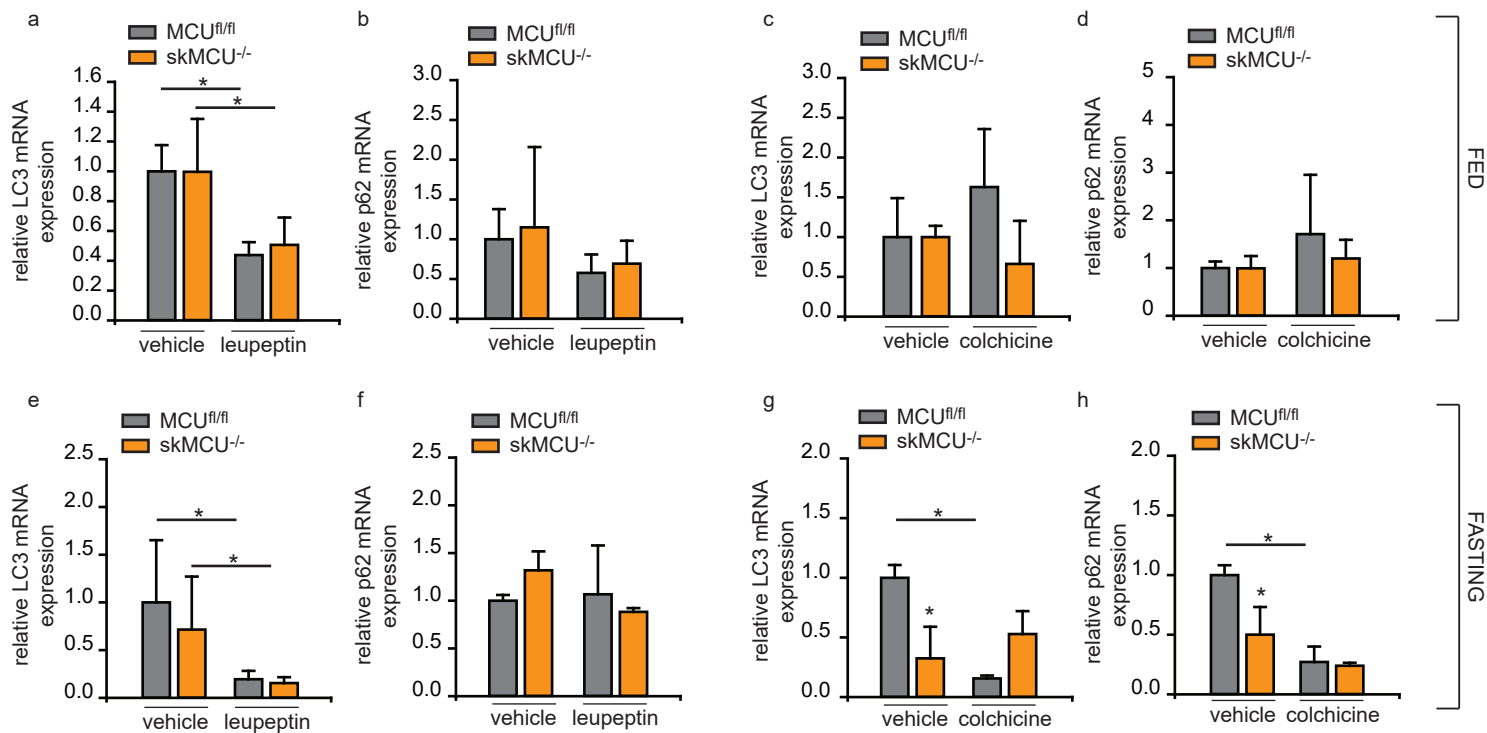
Supplementary Material

**Crosstalk between mitochondrial Ca<sup>2+</sup> uptake and autophagy in skeletal muscle**

Gaia Gherardi, Giulia Di Marco, Rosario Rizzuto and Cristina Mammucari



**Fig S1.** LC3 and P62 protein levels increase during starvation in wild type muscles, related to Figure 1. Immunoblotting analysis of wild type EDL muscles subjected to 5 hours or 24 hours of starvation. Increases in LC3-II and p62 protein levels were detected. Actin protein levels were used as loading control.



**Fig S2.** LC3 and p62 relative mRNA levels are modulated by leupeptin or colchicine treatment both in MCU<sup>fl/fl</sup> and skMCU<sup>-/-</sup> mice, related to Figure 2.

(a-d) Relative mRNA levels of LC3 and p62 in EDL muscles of skMCU<sup>-/-</sup> or MCU<sup>fl/fl</sup> mice treated or not with leupeptin (a-b) or colchicine (c-d) in fed conditions. \*p < 0.05, t- test (two-tailed, unpaired) of 3 animals per condition. Data are presented as mean ± SE.

(e-h) Relative mRNA levels of LC3 and p62 in EDL muscles of skMCU<sup>-/-</sup> or MCU<sup>fl/fl</sup> mice treated or not with leupeptin (e-f) or colchicine (g-h) in starving conditions. \*p < 0.05, t- test (two-tailed, unpaired) of 3 animals per condition. Data are presented as mean ± SE.