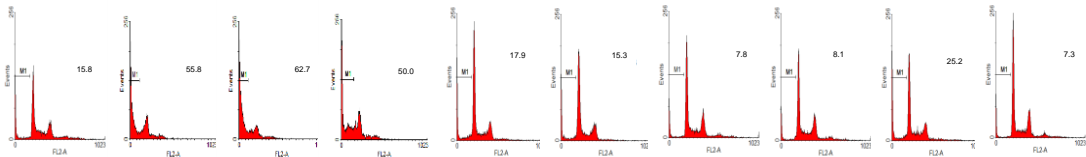


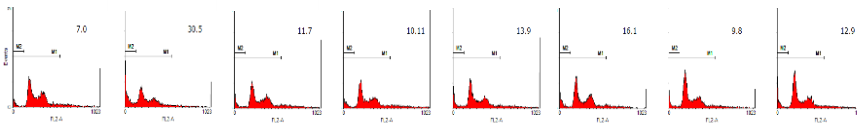
Supplementary Figure 1 Ubbly et al.

HCC1395  
(R175H)

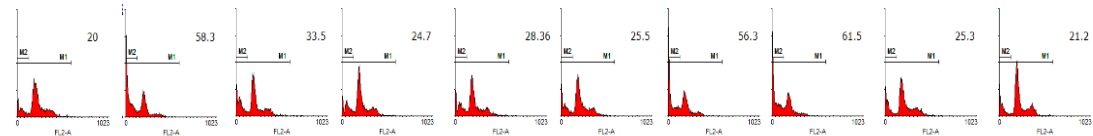
si-scr si-p53 si-1 si-2 si-3 si-4 si-5 si-6 si-7 si-8



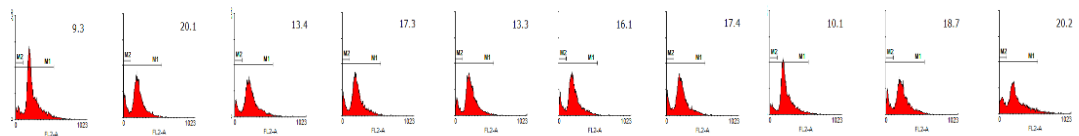
RD  
(R248W)



KNS-62  
(R249S)

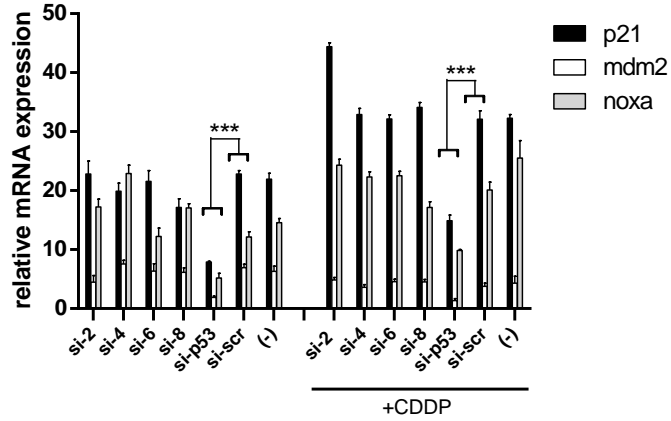


ASPC1  
(R273H)

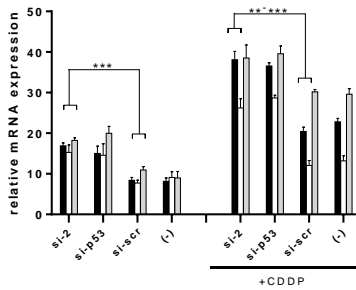


Supplementary Figure 2 Ubyy et al.

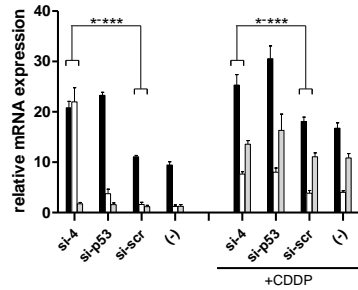
### A549 (WT)



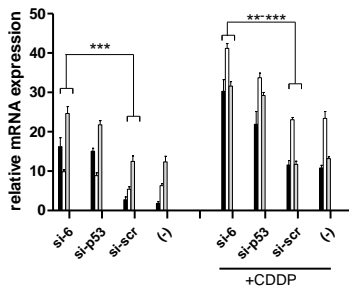
### HCC1395 (R175H)



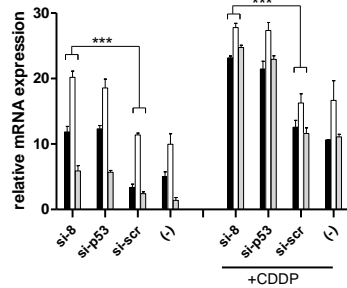
### RD (R248W)

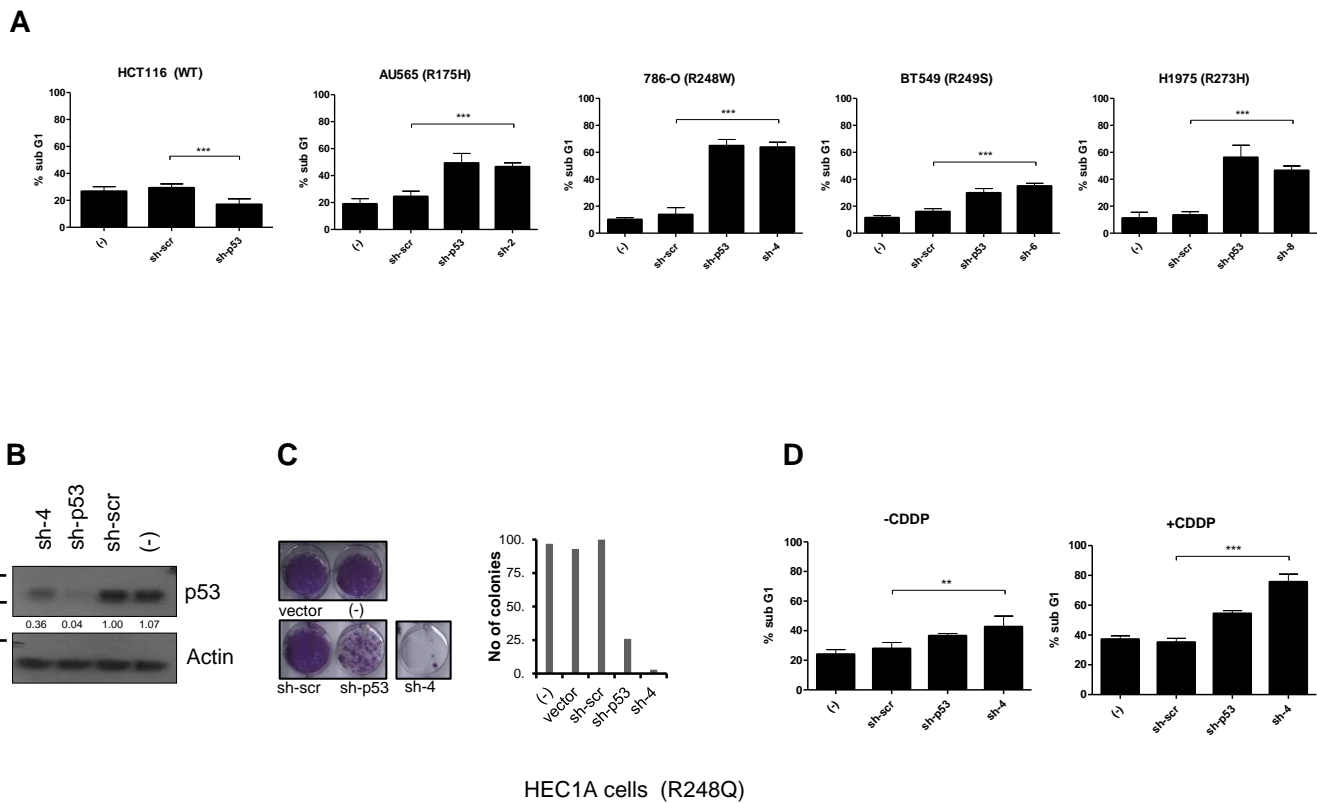


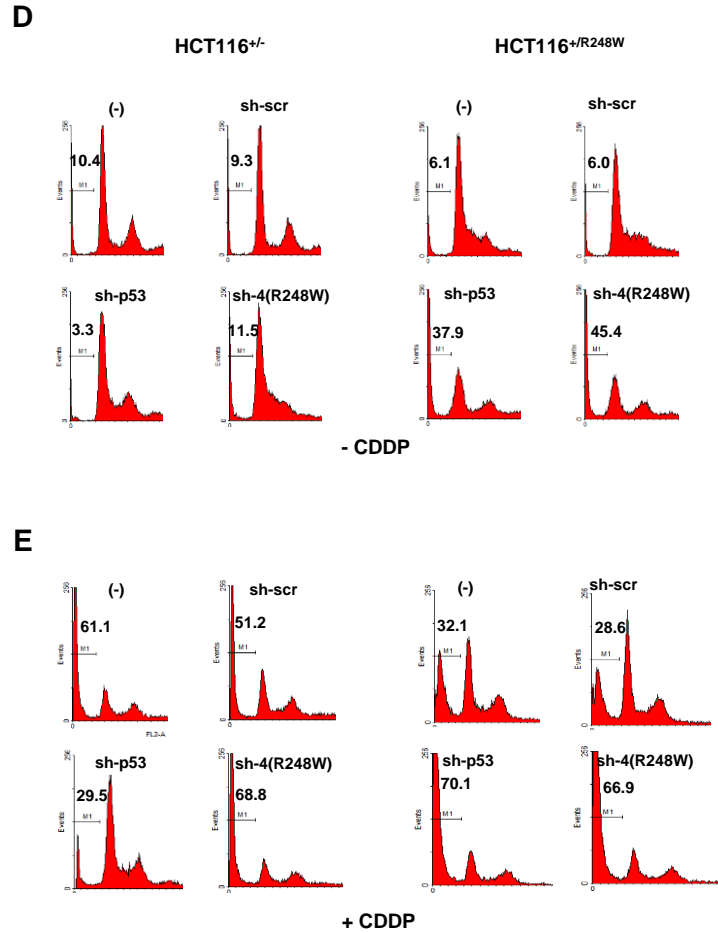
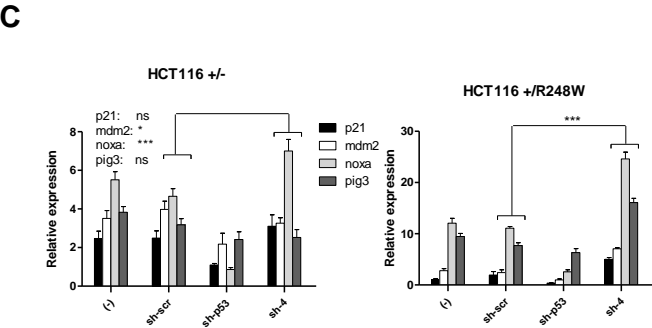
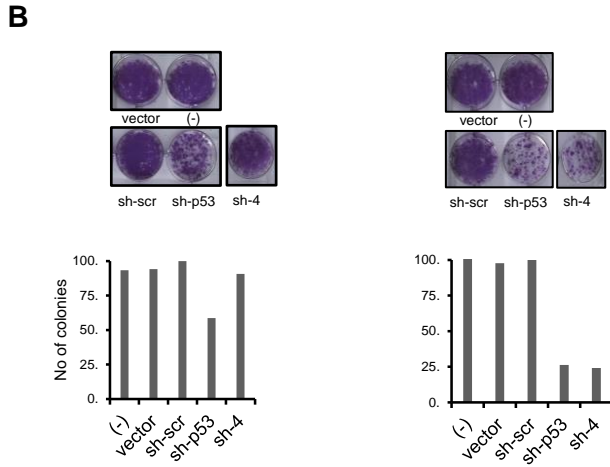
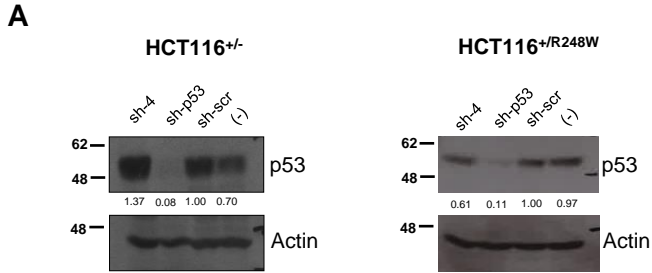
### PLC-PR5 (R249)



### H1975 (R273H)







**Supplementary Table 1: Human tumor cell lines used in the study**

<b>Cell lines used in study</b>	<b>p53 status</b>	<b>Origin of cell line</b>
<b>A549</b>	<b>Wild-type</b>	<b>Lung carcinoma</b>
<b>A375</b>	<b>Wild-type</b>	<b>Malignant melanoma</b>
<b>HCT116</b>	<b>Wild-type</b>	<b>Colon carcinoma</b>
<b>RKO</b>	<b>Wild-type</b>	<b>Colon carcinoma</b>
<b>AU565</b>	<b>R175H</b>	<b>Breast carcinoma</b>
<b>SKBR3</b>	<b>R175H</b>	<b>Breast carcinoma</b>
<b>HCC1395</b>	<b>R175H</b>	<b>Breast carcinoma</b>
<b>HEC-1A</b>	<b>R248Q</b>	<b>Endometrial adenocarcinoma</b>
<b>RD</b>	<b>R248W</b>	<b>Rhabdomyosarcoma</b>
<b>786-O</b>	<b>R248W</b>	<b>Kidney adenocarcinoma</b>
<b>COLO-320DM</b>	<b>R248W</b>	<b>Colon adenocarcinoma</b>
<b>PLC-PRF/5</b>	<b>R249S</b>	<b>Hepetocellular carcinoma</b>
<b>KNS-62</b>	<b>R249S</b>	<b>Bronchial squamous cancer</b>
<b>BT549</b>	<b>R249S</b>	<b>Breast carcinoma</b>
<b>ASPC1</b>	<b>R273H</b>	<b>Pancreatic adenocarcinoma</b>
<b>WiDR</b>	<b>R273H</b>	<b>Colon adenocarcinoma</b>
<b>H1975</b>	<b>R273H</b>	<b>Lung carcinoma</b>