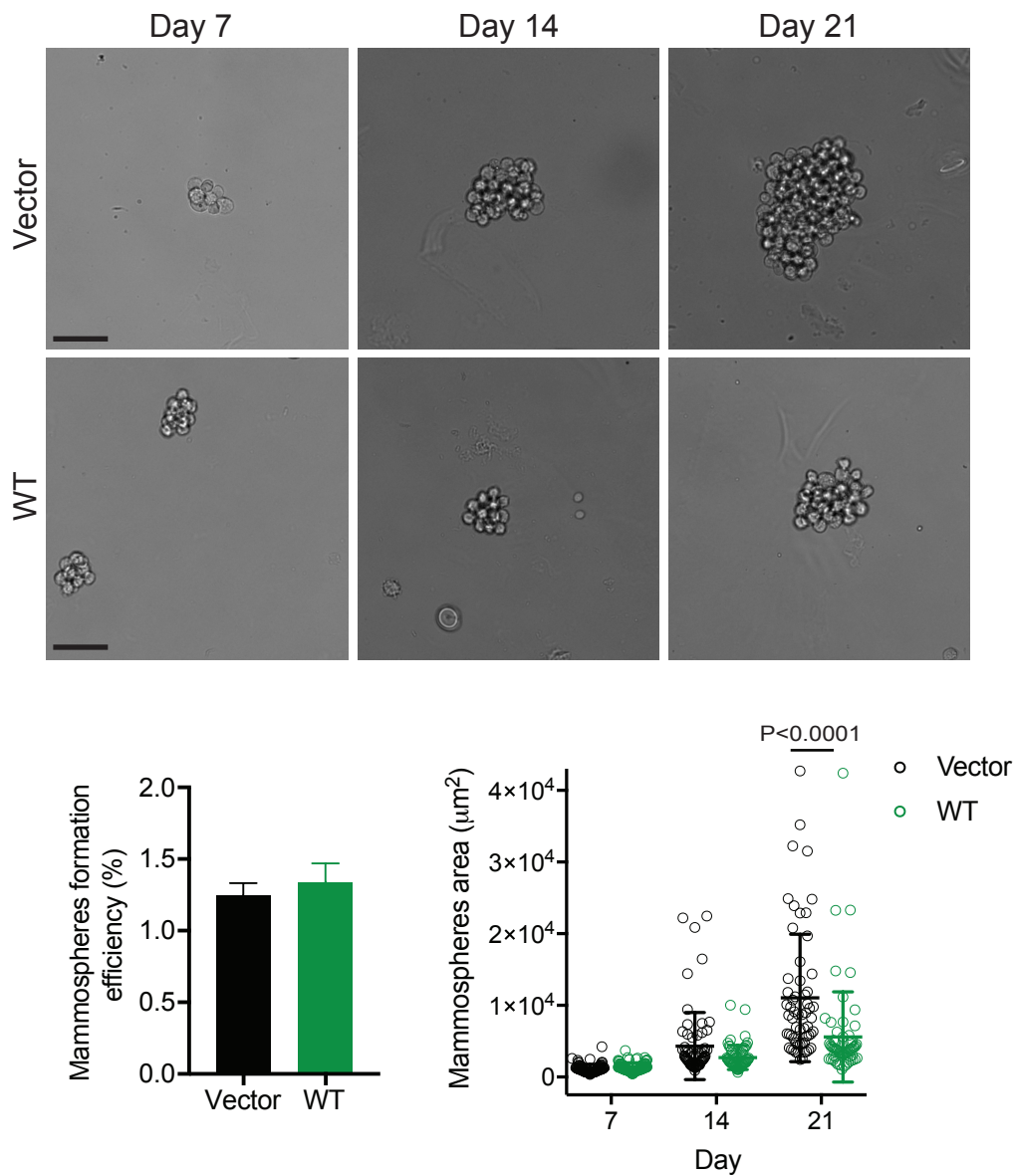


## SUPPLEMENTAL FIGURE 5



### Supplemental Figure 5. BAD expression decreases mammosphere size

MDA-MB-231 vector and wild-type BAD single cells were grown in medium allowing for growth of mammospheres. Images were taken at the indicated day. Scale bar=50  $\mu\text{m}$ . Mammosphere formation efficiency was measured on day 21 (error bars indicate SEM). Mammosphere area was measured on day 7, 14 and 21 (Two-way ANOVA followed by Sidak's multiple comparisons test).