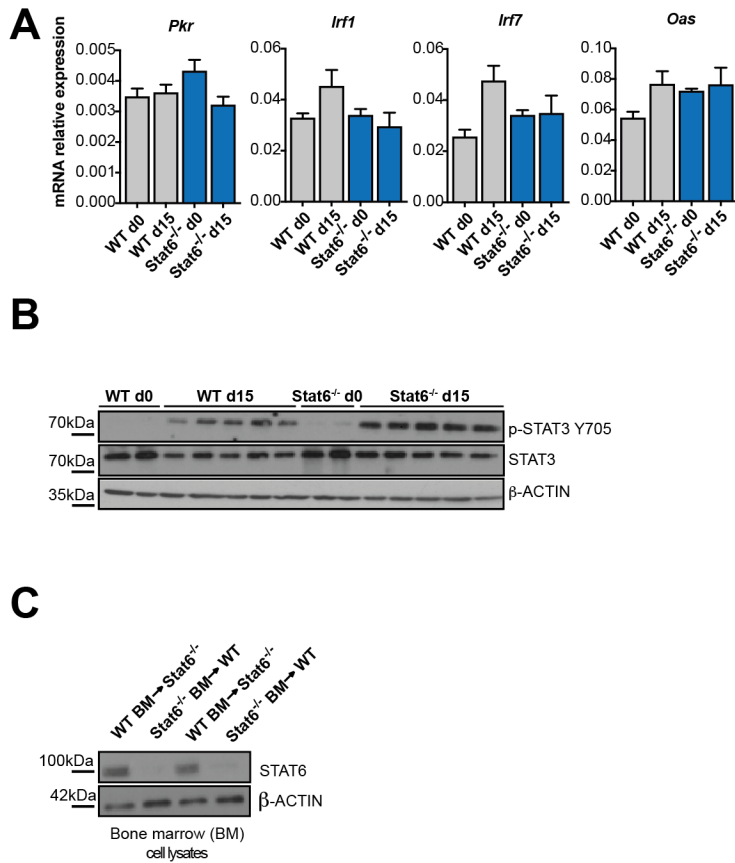
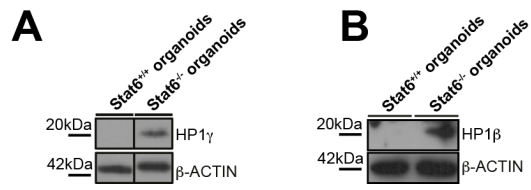


1  
2  
3  
4  
5  
6  
7  
8  
9  
10  
11  
12  
13  
14  
15  
16  
17  
18  
19  
20



**Supplementary Figure 1 (A-C).** (A) RT-PCR, expression analysis of IFN $\gamma$ -related genes in the mucosa of unchallenged (day 0) and AOM/DSS-treated WT and *Stat6*<sup>-/-</sup> mice on day 15 (WT d0/*Stat6*<sup>-/-</sup> d0 n=3; WT d15/*Stat6*<sup>-/-</sup> d15 n=5); (B) Immunoblot analysis of p-STAT3 Y705 and STAT3 in unchallenged mucosa (d0) and AOM/DSS-treated (d15) colon from WT and *Stat6*<sup>-/-</sup> mice.  $\beta$ -ACTIN as loading control; (C) Immunoblot analysis of bone marrow from *Stat6*<sup>-/-</sup>BM >WT and WT BM >*Stat6*<sup>-/-</sup> mice at the end of the CAC model.  $\beta$ -ACTIN as loading control. Data are mean  $\pm$ SEM.



1

2

3 **Supplementary Figure 2 (A-B).** (A-B) Immunoblot analysis of HP1 $\gamma$  and HP1 $\beta$

4 expression in unchallenged WT and *Stat6*<sup>-/-</sup> colonic organoids;  $\beta$ -ACTIN as loading

5 control.

6