

Supplementary Information

Phosphorylation of adducin-1 by cyclin-dependent kinase 5 is important for epidermal growth factor-induced cell migration

Chia-Yi Su, Ruei-Liang Yan, Wen-Hsin Hsu, Ching-Tung Chu, Hsuan-Chia Chang,
Chien-Chen Lai, Hui-Ping Hsu, and Hong-Chen Chen

*Corresponding author. Email: hcchen1029@ym.edu.tw

Supplementary Table S1. Predicted ADD1 phosphorylation sites for Cdk5.

| Software | ADD1 |
|-----------------------|------|
| Scansite ¹ | S431 |
| | S600 |
| | T724 |
| GPS ² | S431 |
| | S600 |
| | T724 |

Supplementary Table S2. Identification of ADD1 phosphorylation sites by mass spectrometry analysis.

| ADD1 domain | Cdk5 ^a | |
|-------------|-------------------|------|
| | - | + |
| head | S12 | S12 |
| | | |
| neck | S355 | S355 |
| | S358 | S358 |
| | | S431 |
| | S465 | S465 |
| tail | | S586 |
| | | S600 |
| | | T724 |
| | S726 | S726 |

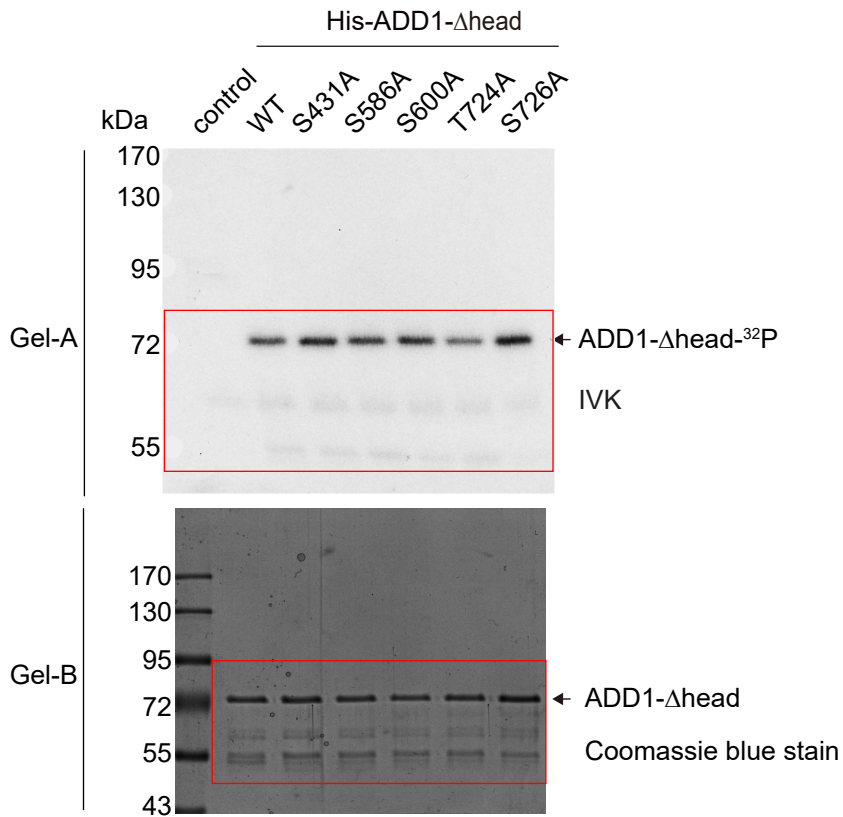
a. HEK293 cells were transiently transfected with (+) or without (-) Cdk5. Endogenous ADD1 was immunoprecipitated with anti-ADD1 antibody and the phosphorylation sites of ADD1 were identified by mass spectrometry.

References

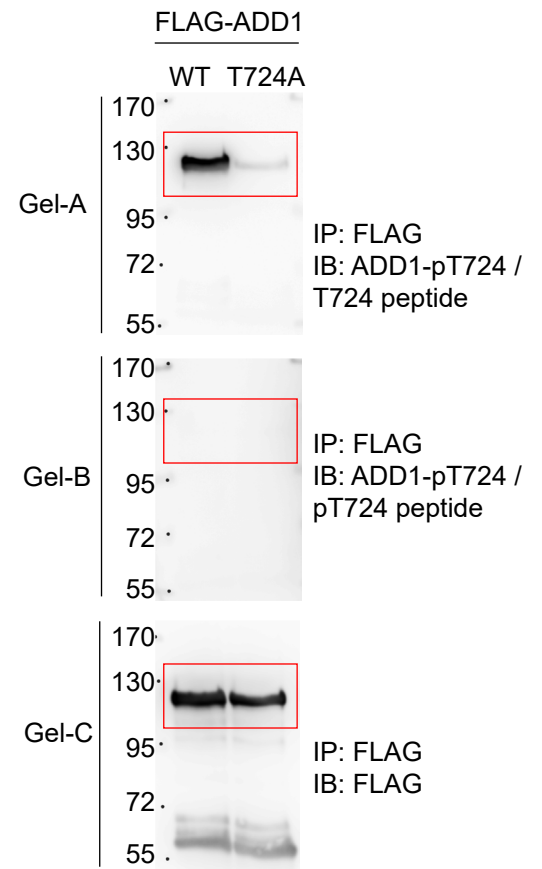
1. Obenaur, J.C., Cantley, L.C. & Yaffe, M.B. Scansite 2.0: proteome-wide prediction of cell signaling interactions using short sequence motifs. *Nucleic Acids Res.* **31**, 3635-3641; <http://scansite.mit.edu> (2003).
2. Xue, Y. *et al.* GPS 2.0, a tool to predict kinase-specific phosphorylation sites in hierarchy. *Mol. Cell Proteomics* **7**, 1598-1608; <https://omictools.com/gps-2-tool> (2008).

Raw data

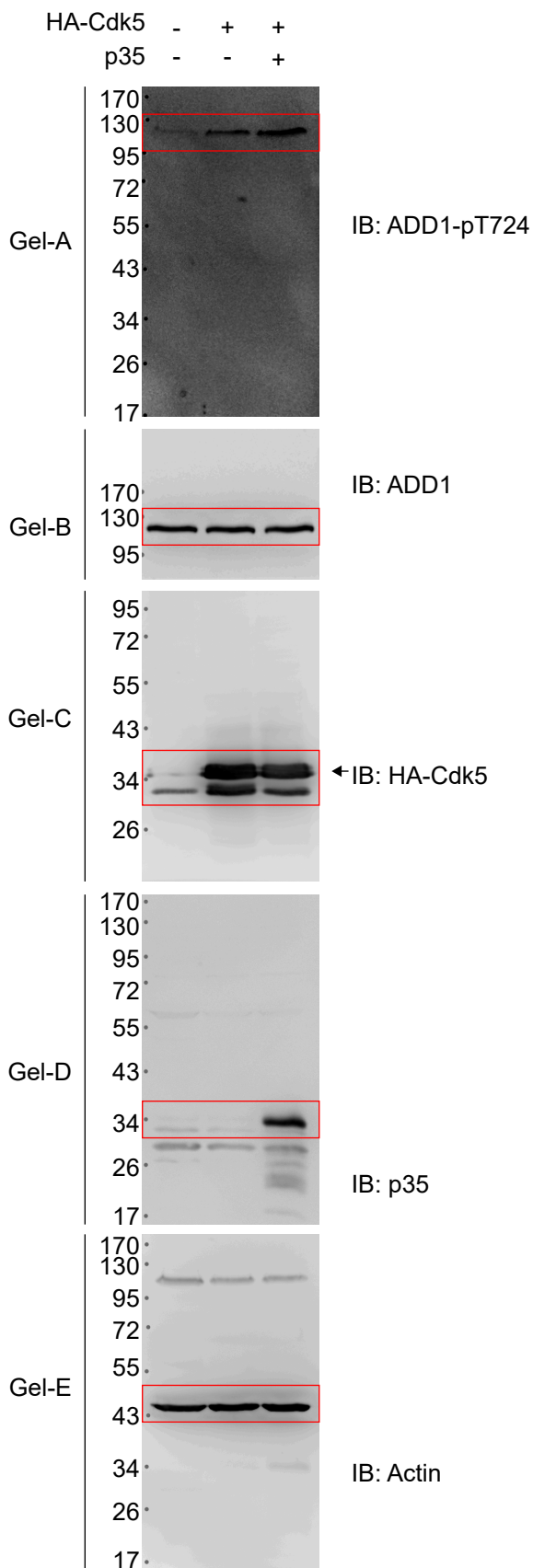
Supple. Fig. 1(a)



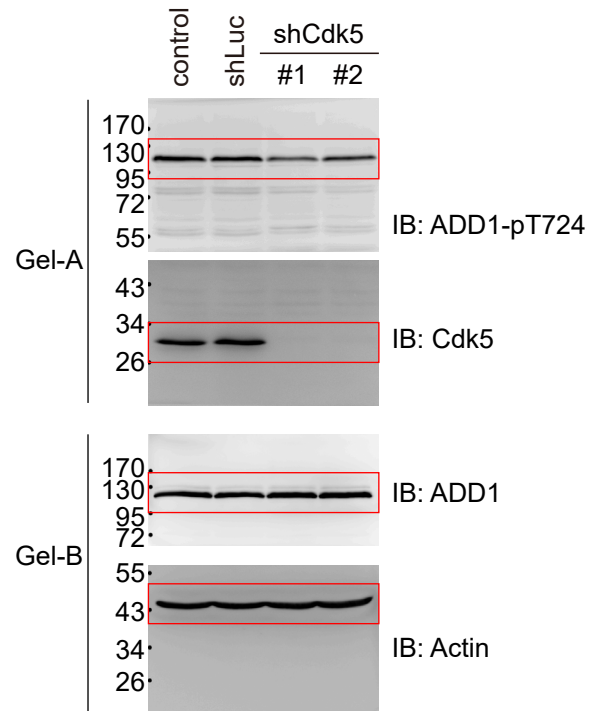
Supple. Fig. 1(b)



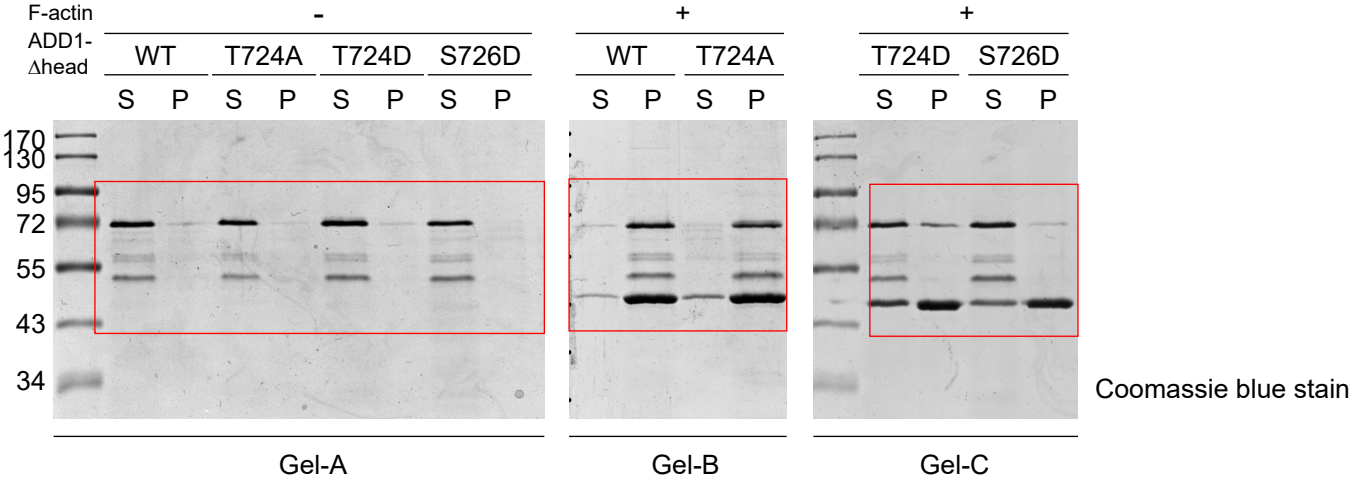
Supple. Fig. 1(c)



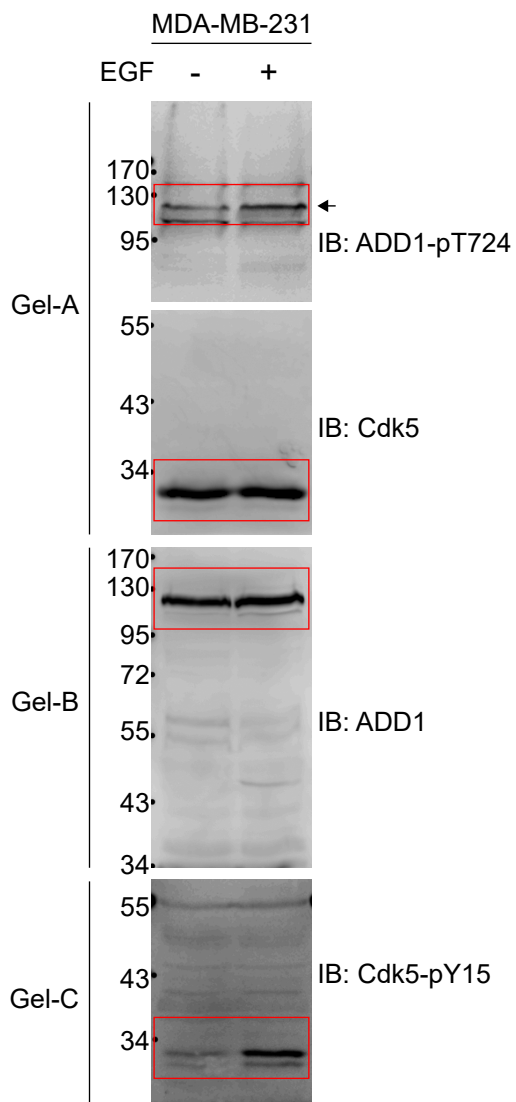
Supple. Fig. 1(d)



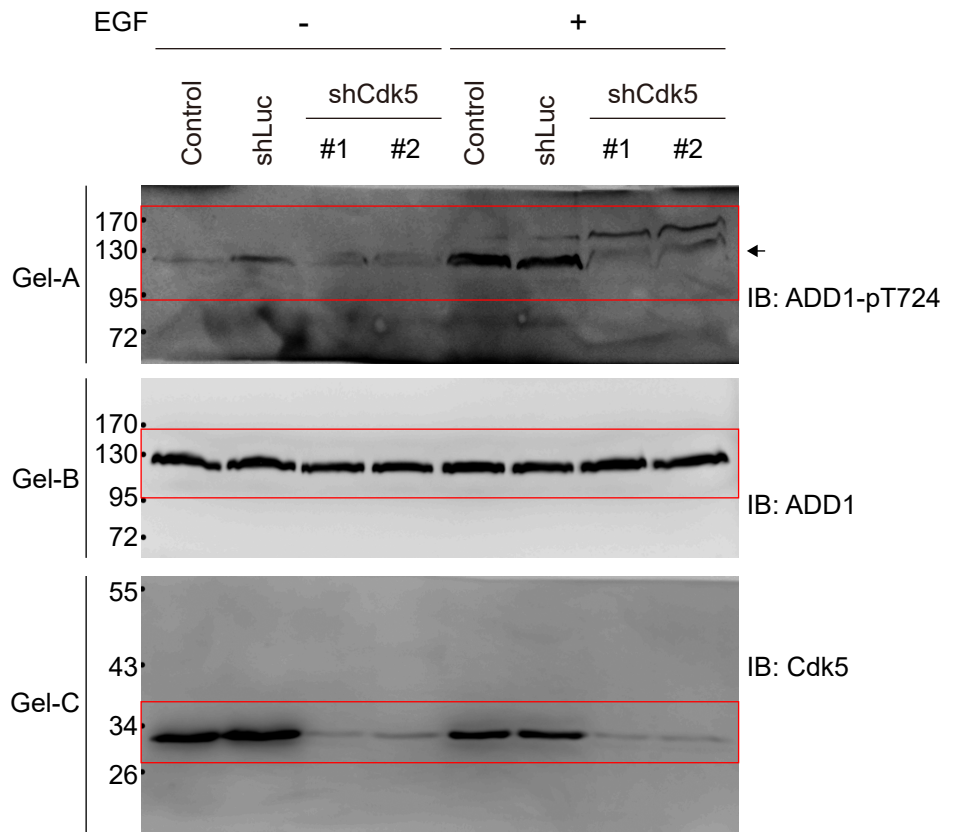
Supple. Fig. 2(a)



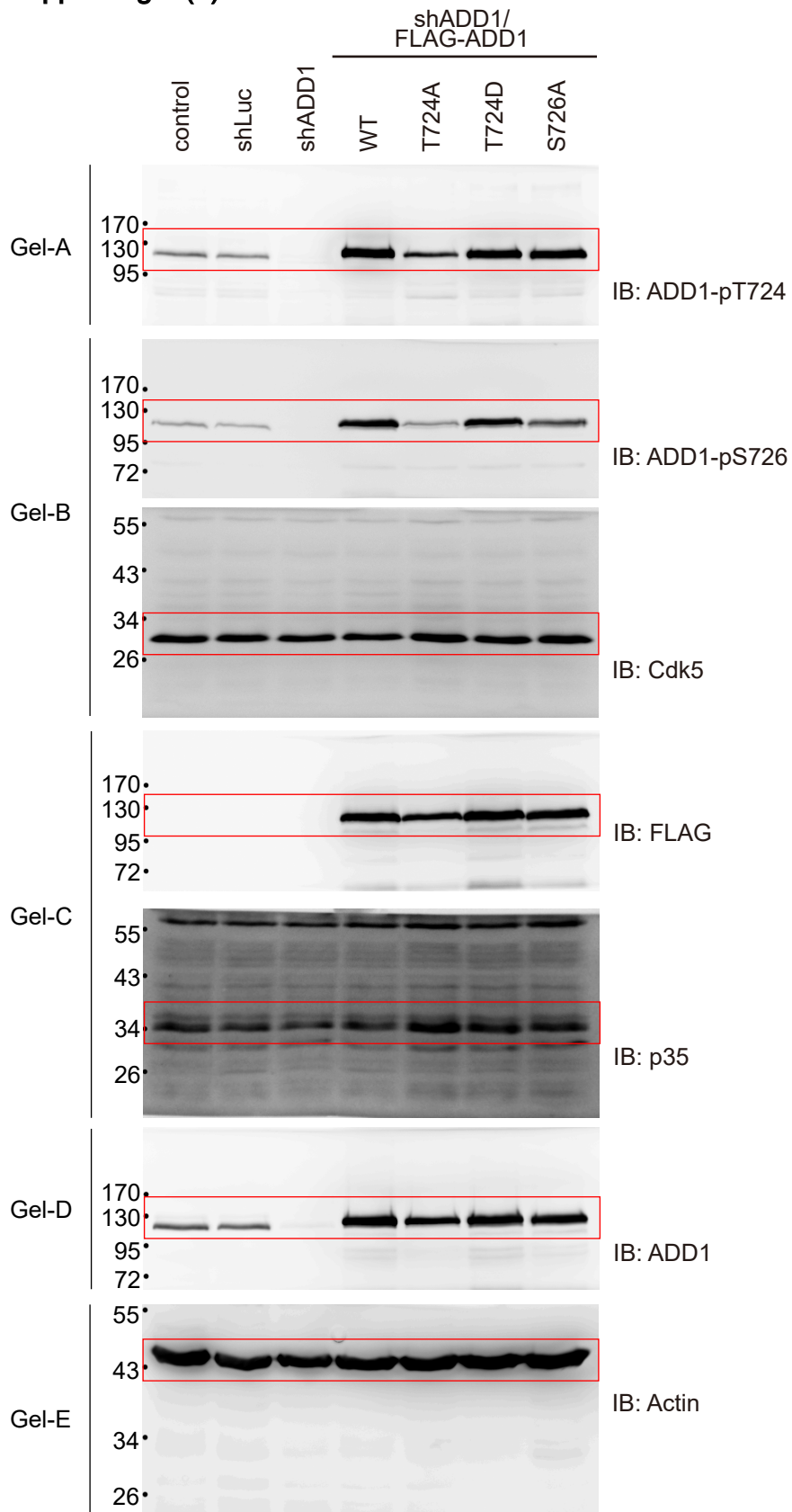
Supple. Fig. 4(a)



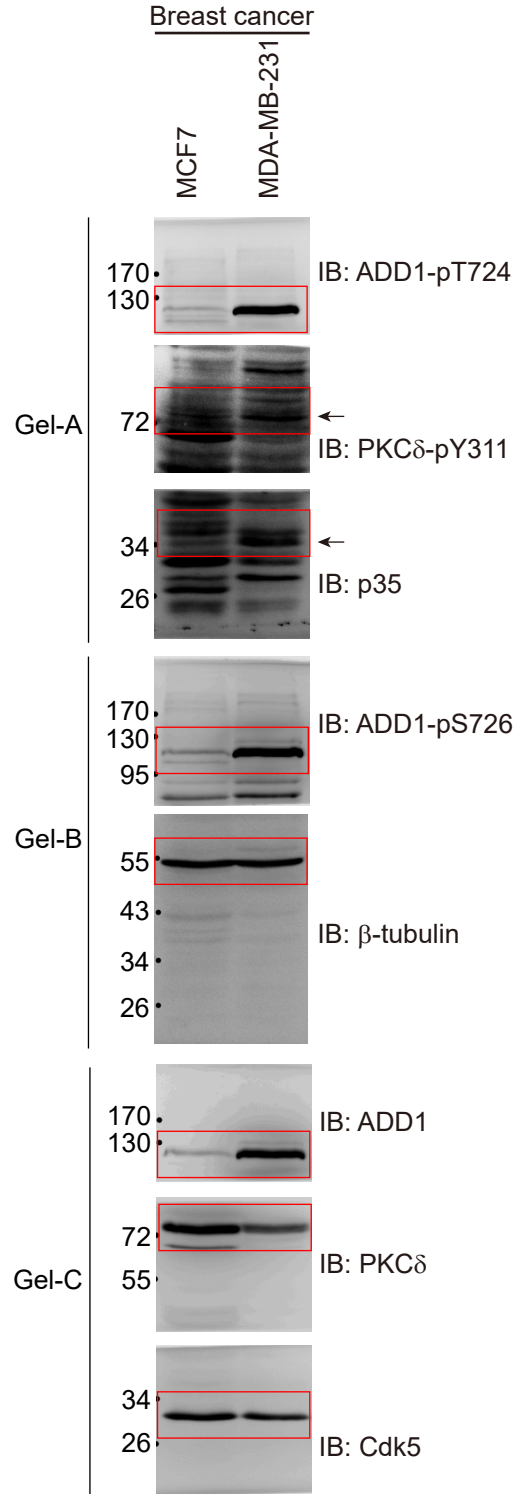
Supple. Fig. 4(b)



Supple. Fig. 5(a)



Supple. Fig. 7(a)



Supple. Fig. 7(b)

