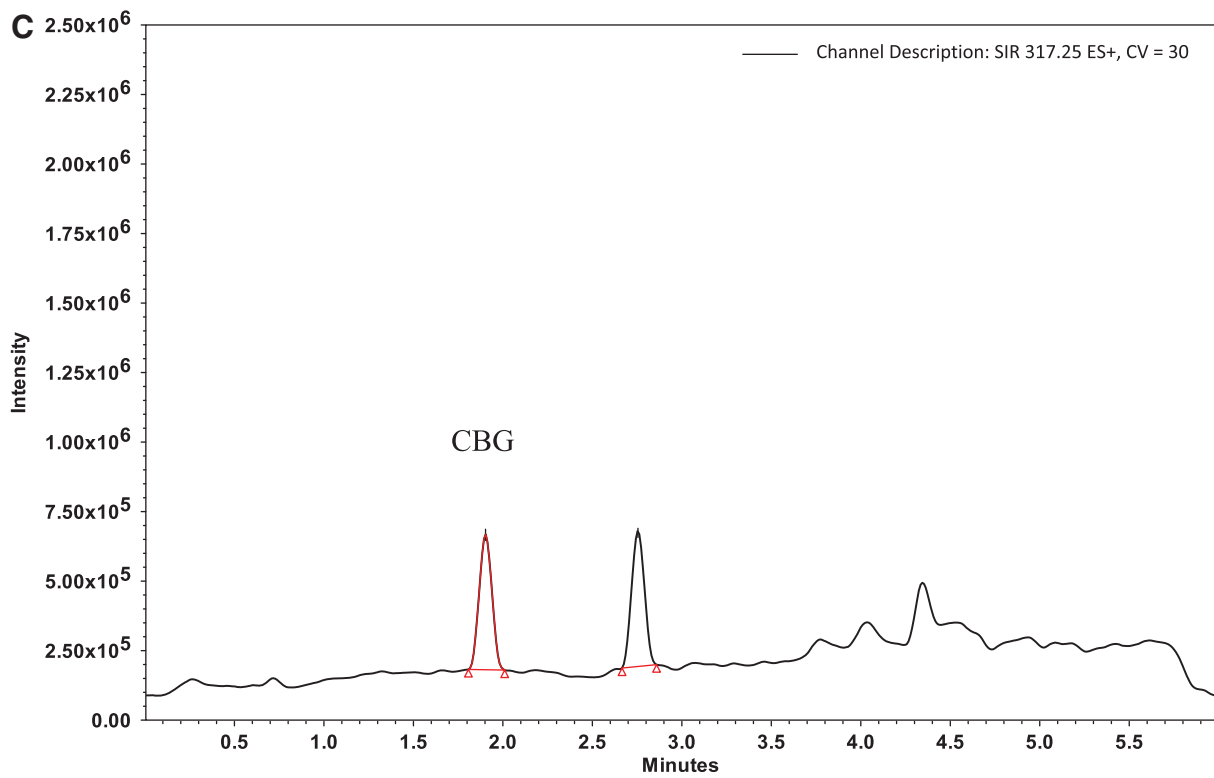


**SUPPLEMENTARY FIG. S6.** Representative mass chromatograms for cultivar 3 extract using MAE. **(A)** ESI (-ve) mode for detection of acidic phytocannabinoids, and **(B)** and **(C)** ESI (+ve) mode for detection of neutral phytocannabinoids at SIR 315.23 and 317.25 Da, respectively; SIR, single ion recording.



**SUPPLEMENTARY FIG. S6.** (Continued)