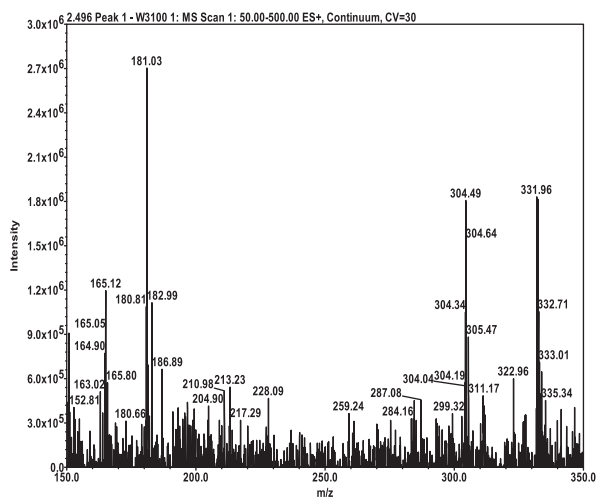
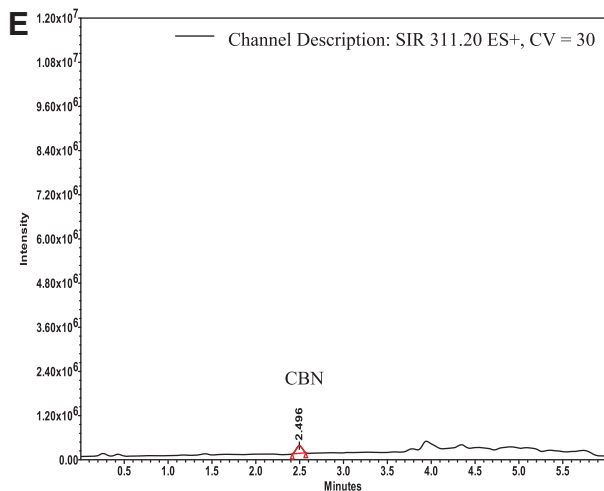
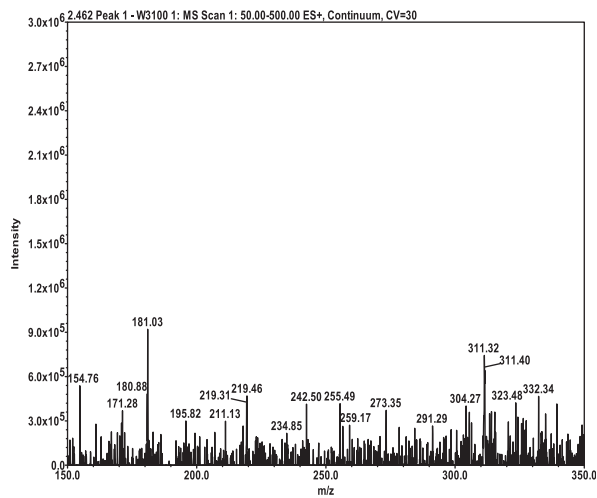
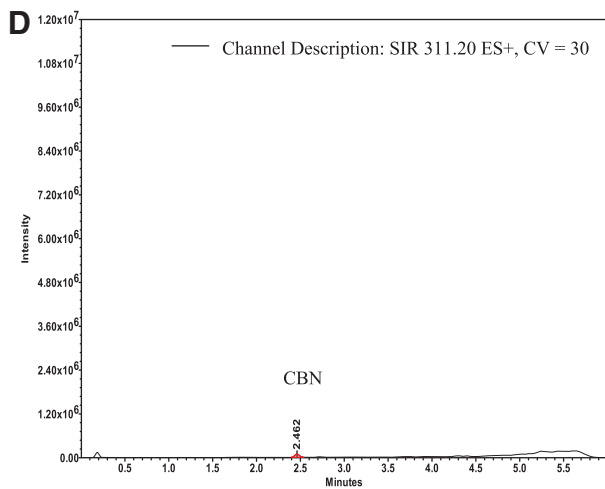


SUPPLEMENTARY FIG. S7. Comparison of representative mass chromatograms (left panel) and mass spectra (right panel) using ESI (+ve) mode SIR at 311.20 Da (m/z , MH^+) for CBN reference standard (**A**); Strain 1 extracts first subjected to UAE (**B**) or SFE (**C**) or Soxhlet (**D**) method, followed by microwave heating; (**E**) cultivar 3 extract obtained using MAE. SFE, supercritical fluid extraction. CBN, cannabinol.



SUPPLEMENTARY FIG. S7. (Continued)