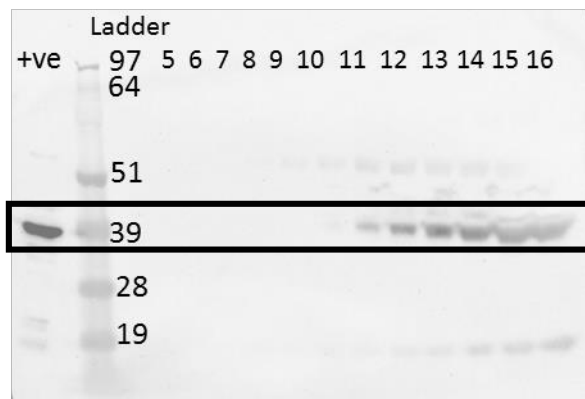


Circulating exosomes may identify biomarkers for cows at risk for metabolic dysfunction

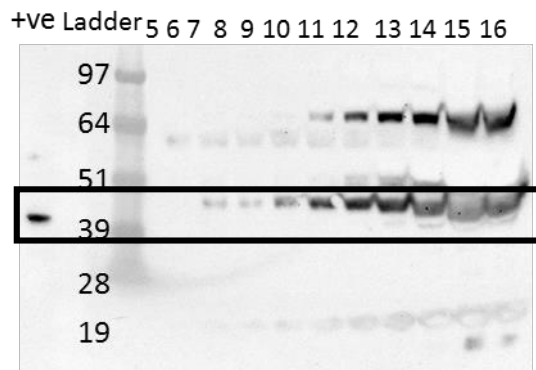
Fatema B. Almughliq, Yong Q. Koh, Hassendrini N. Peiris, Kanchan Vaswani, Olivia Holland, Susanne Meier, John R. Roche, Chris R. Burke, Mallory A. Crookenden, Buddhika J. Arachchige, Sarah Reed and Murray D. Mitchell.

Exosomes from cows at low-risk for metabolic dysfunction

TSG101 (45 kDa)

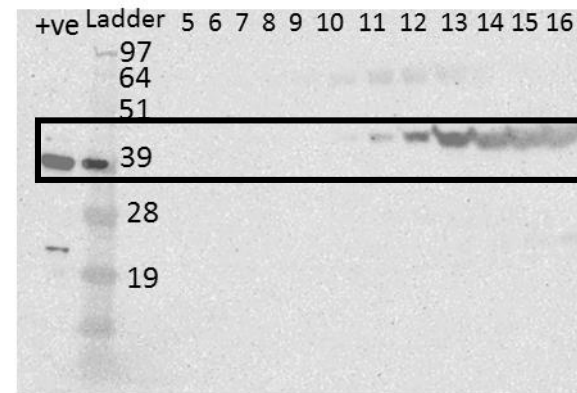


FLOT-1 (49 kDa)

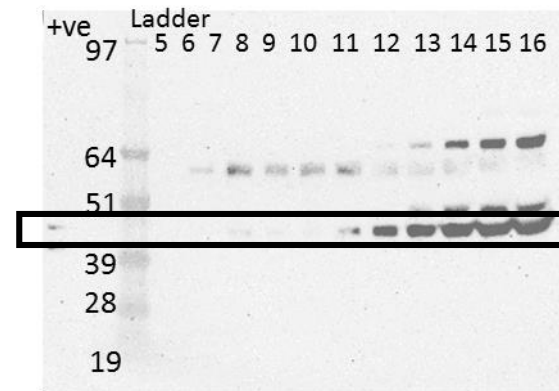


Exosomes from cows at high-risk for metabolic dysfunction

TSG101 (45 kDa)



FLOT-1 (49 kDa)



Supplementary Information: The full unedited blots used in Fig. 1A of exosomal fractions 5–16. The cropped blots presented in Fig. 1A are shown in the boxes.