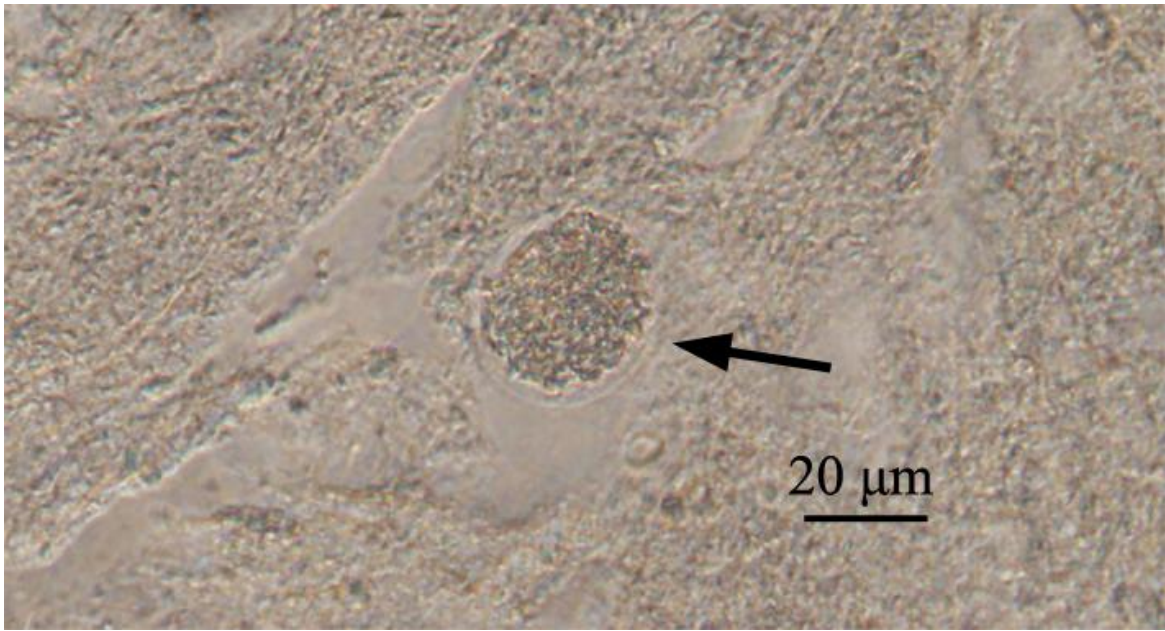


1 **SUPPLEMENTARY MATERIAL**



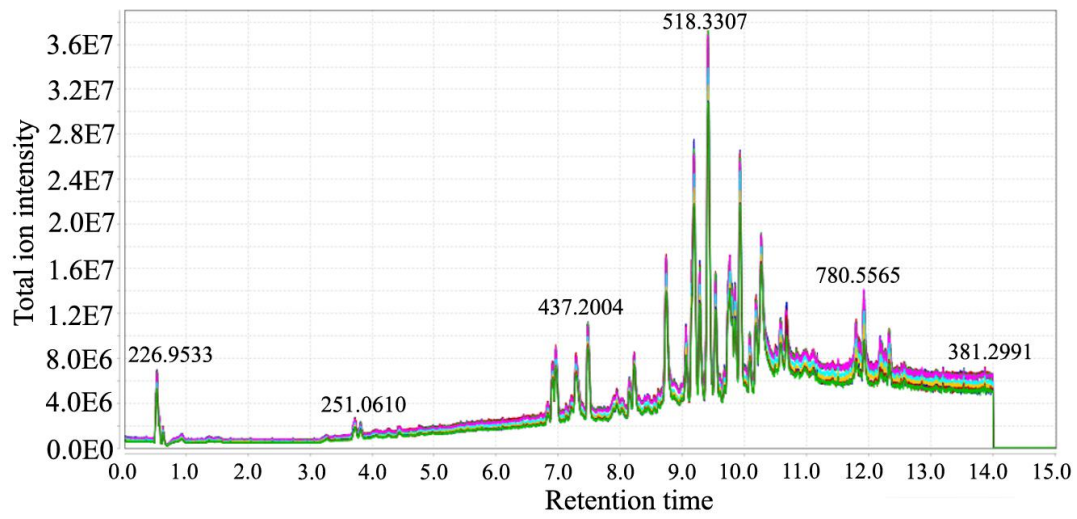
2

3

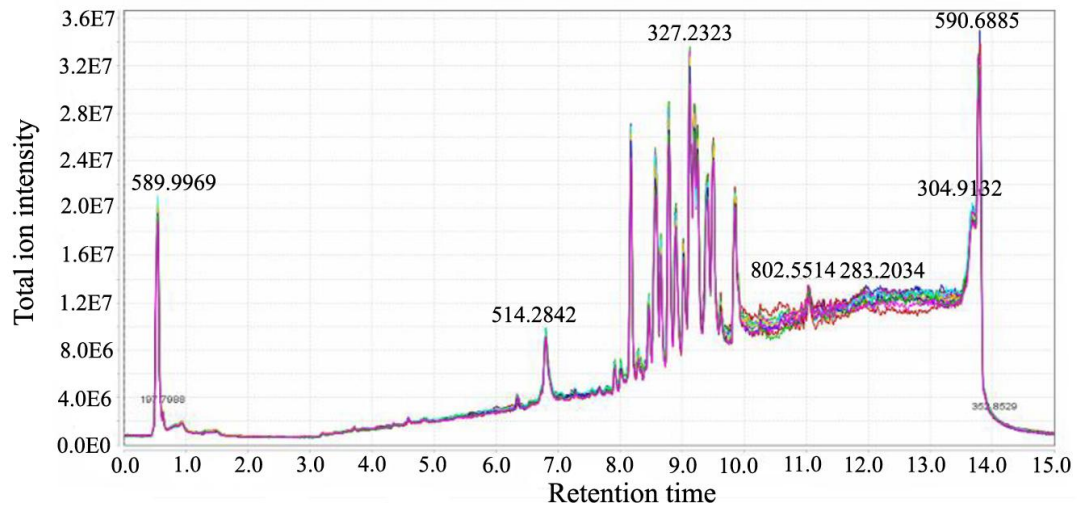
4 **Fig S1.** Representative image of *T. gondii* GT1 cyst (arrow) used in this study.

5

A



B



6

7

8 **Fig S2.** Total ionic chromatography (TIC) of QC samples in the positive ion mode (A) and in

9 the negative ion mode (B).

10

11

12

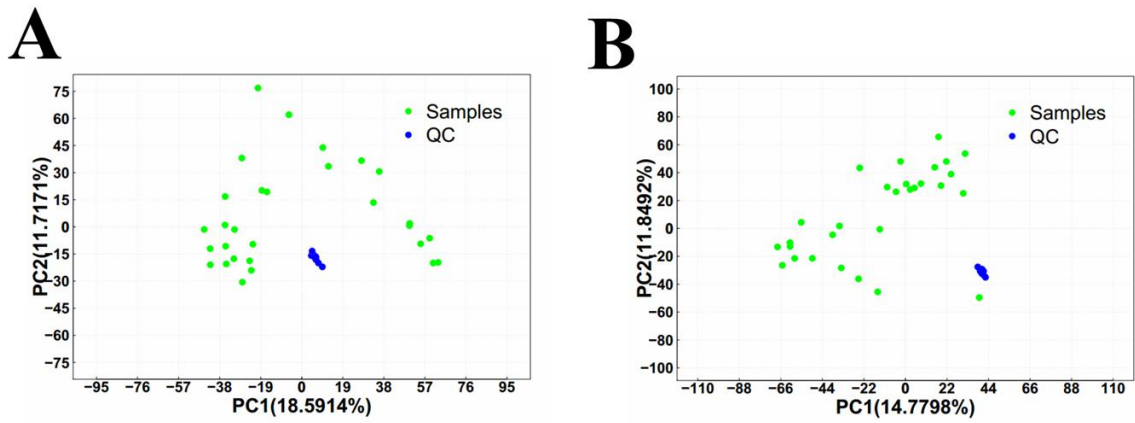
13

14

15

16

17



18

19

20 **Fig S3.** Principal component analysis (PCA) scores plots of serum samples obtained from test
 21 mice samples and quality control (QC) samples. PCA score plots are shown for metabolites
 22 obtained in positive ion mode (ESI+) (A) and negative ion mode (ESI-) (B).

23

24

25

26

27

28

29

30

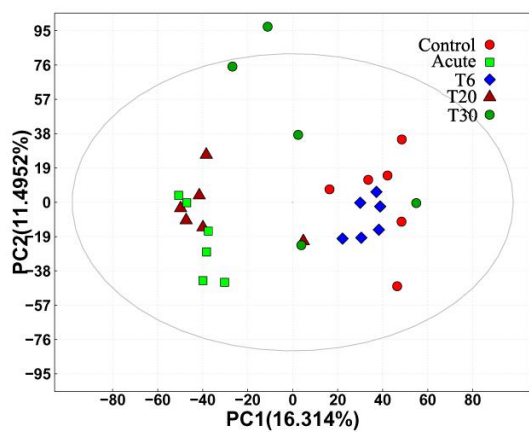
31

32

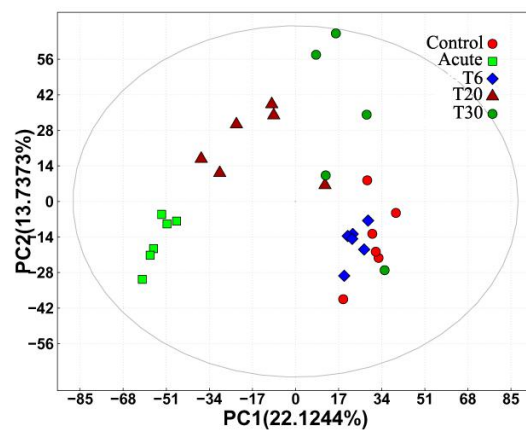
33

34

A



B



35

36

37 **Fig S4.** Principal component analysis (PCA) score scatter plots of metabolites obtained from
38 LC-MS/MS fingerprint in ESI+ mode (A) and ESI- mode (B).

39

40

41

42

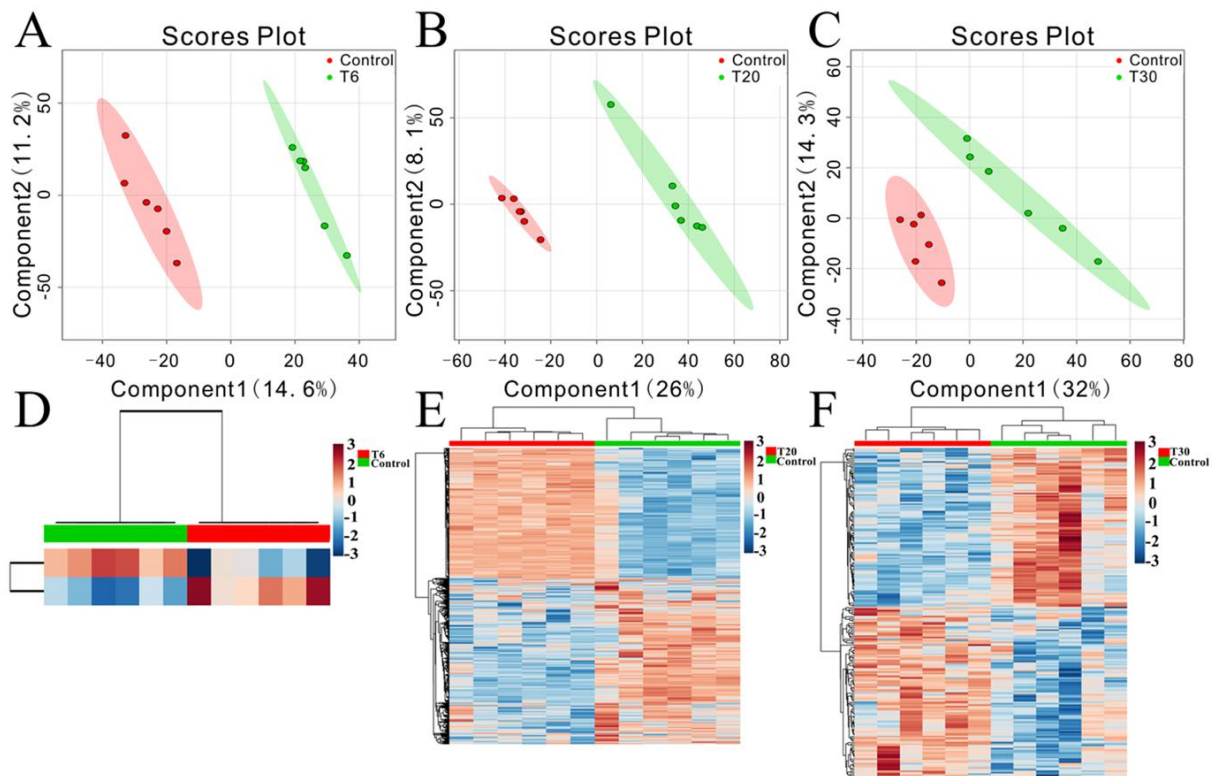
43

44

45

46

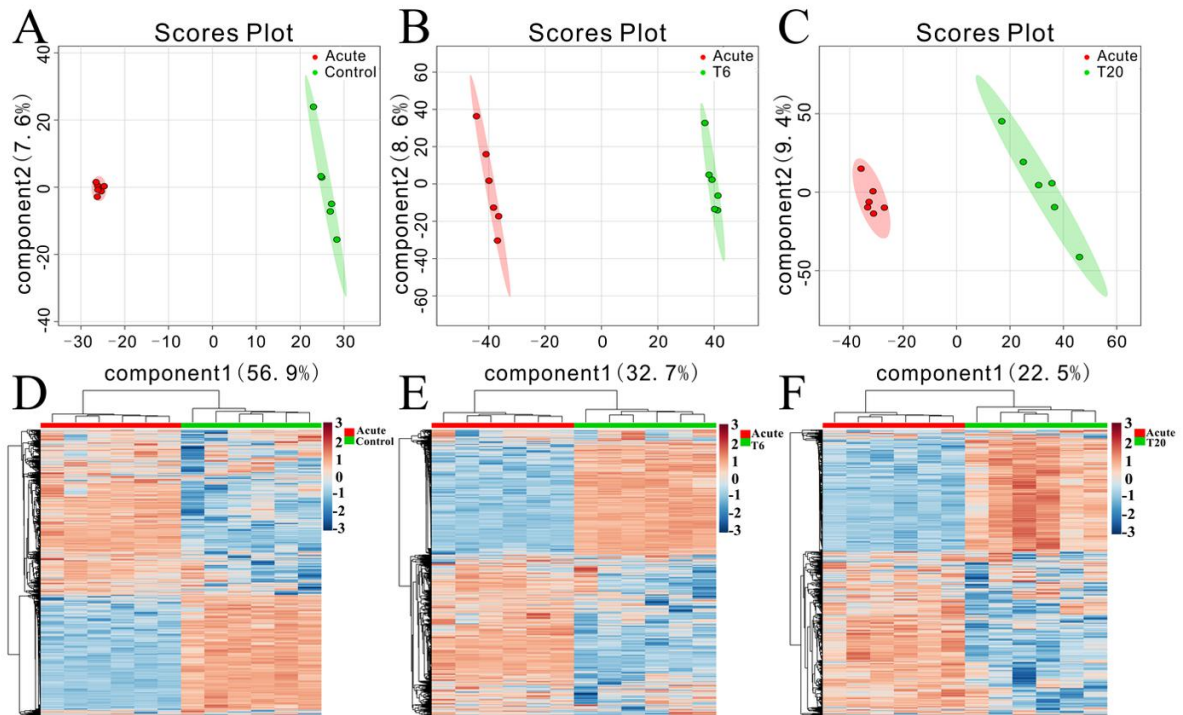
47



48
49

50 **Fig S5.** Discrimination between treated and control mice based on ESI- mode-derived
51 metabolic phenotype of serum. (A–C) Partial least squares-discriminate analysis (PLS-DA)
52 score plots of (A) T6 vs. control, (B) T20 vs. control and (C) T30 vs. control. (D–F) Heatmaps
53 of the differential metabolites for (D) T6 infected vs. control, (E) T20 vs. control and (F) T30
54 vs. control. The control group samples are labeled as Con.

55
56
57



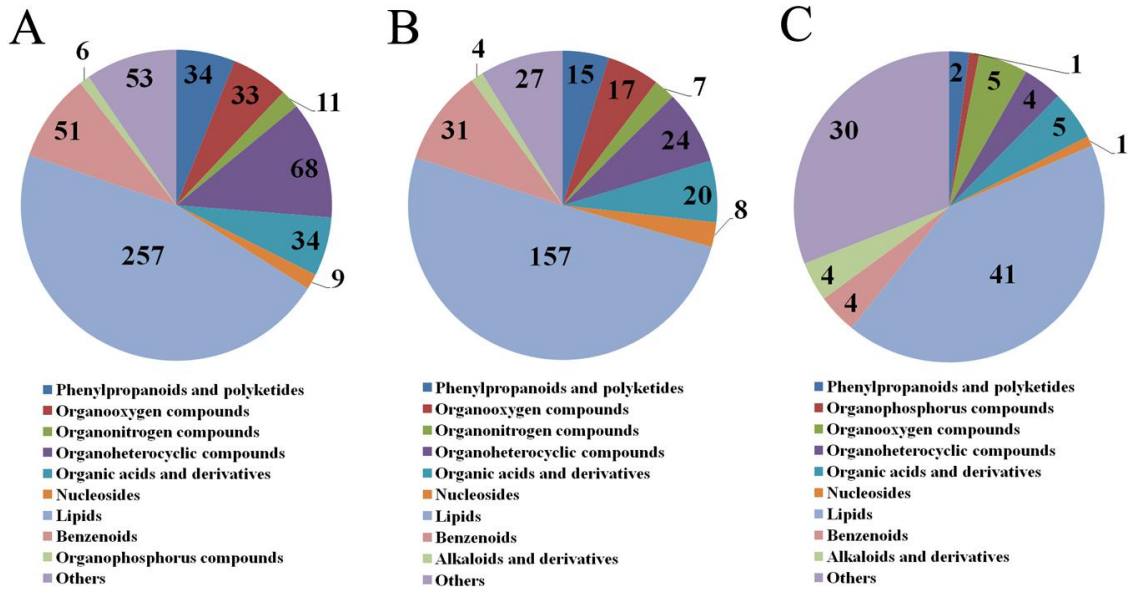
58

59

60 **Fig S6.** Discrimination of control, T6 and T20 vs. acutely infected mice based on ESI-
 61 mode-derived metabolic phenotype of serum. (A–C) Partial least squares-discriminate
 62 analysis (PLS-DA) score plots of (A) control vs. acutely infected mice, (B) T6 vs. acutely
 63 infected mice and (C) T20 vs. acutely infected mice. (D–F) Heatmaps of the top differential
 64 metabolites for (D) control vs. acutely infected mice, (E) T6 vs. acutely infected mie and (F),
 65 T20 vs. acutely infected mice. Samples from acutely infected group are labeled ‘acute’.

66

67



68

69

70 **Fig S7.** Summary statistics of the annotated differential metabolites identified among different

71 groups in ESI- mode. (A) Top 10 largest categories between mice in the acutely infected

72 group and controls. (B) Top 10 largest categories between T6 and controls. (C)Top 10 largest

73 categories between T30 and controls.

74

75

76

77

78

79

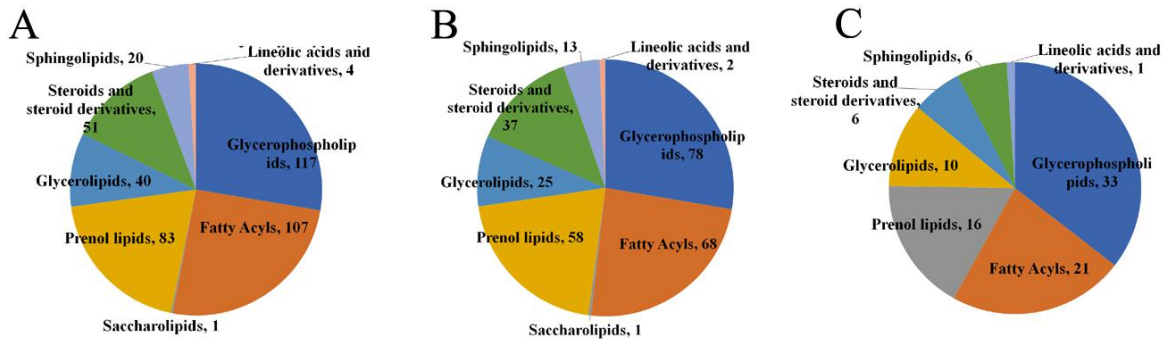
80

81

82

83

84



85
86

87 **Fig S8.** Pie charts showing differential lipid metabolites classified based on the LIPID MAPS
88 comprehensive classification system. (A–C) Statistics of differential lipid metabolites
89 of (A) Acute vs. Control, (B) T20 vs. Control and (C) T30 vs. Control in ESI+
90 mode. (D–F) Statistics of differential lipid metabolites of (A) Acute vs. Control, (B) T20 vs.
91 Control and (C) T30 vs. Control in ESI- mode.

92