

1 **SUPPLEMENTARY MATERIAL**

2 Of the tumors irradiated with 10Gy, 3 out of 5 mice in the 10Gy 50% group and 2 out of 5
3 mice in the 10Gy 100% groups showed a complete response and 1 out of 5 mice in the
4 20Gy 50% irradiated groups showed a complete response (supp. fig. S2). The absence
5 of residual cancer cells in the responding mice was confirmed by pathological analysis of
6 the mammary glands. Mice in the 20Gy 100% group died early in the experiment due to
7 GI toxicity.

8
9 No significant change in CD4⁺ cell infiltration was observed at the examined time points
10 (supp. fig. S3).

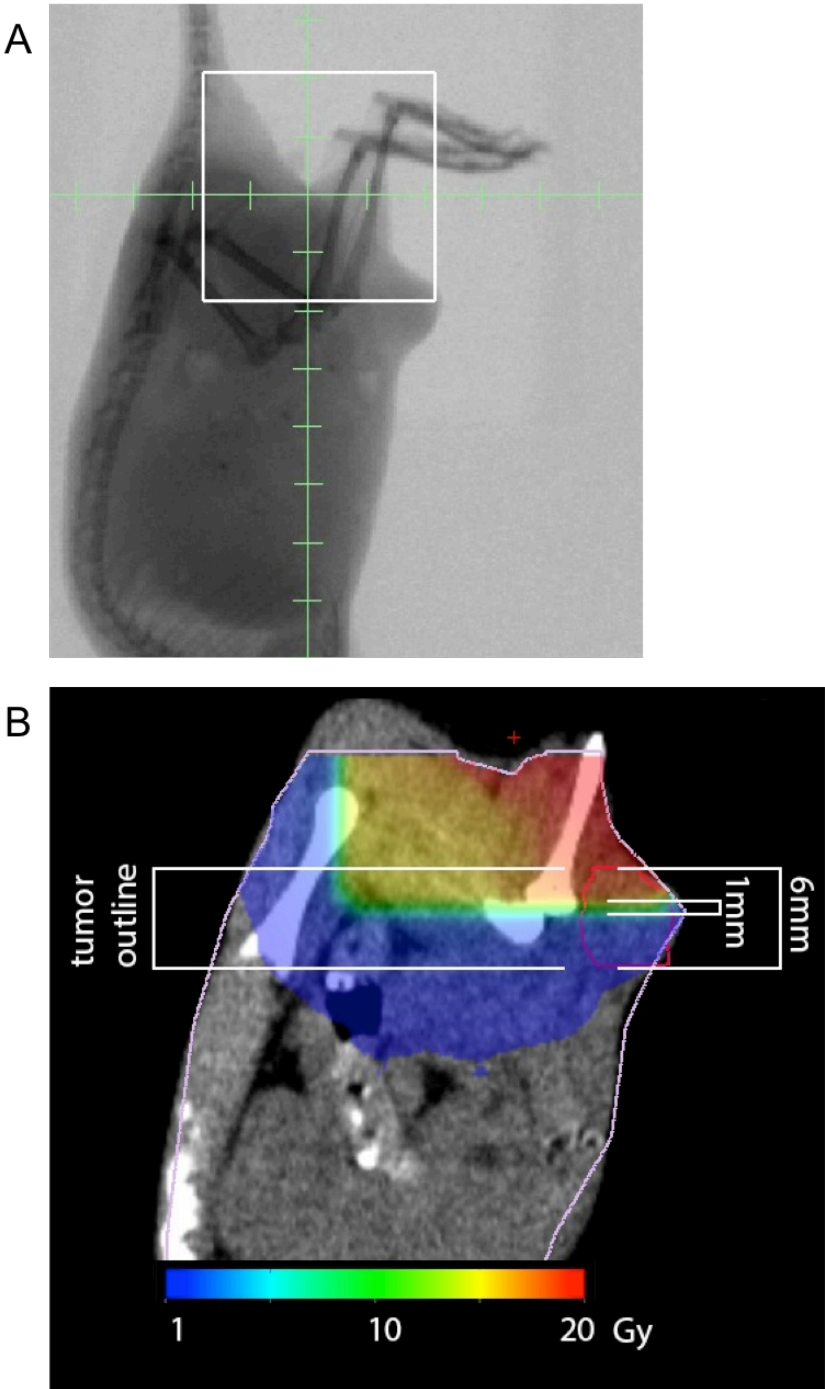
11
12 Examination of granulocytes, monocytes, macrophages and dendritic cells in the tumors
13 and draining LNs by flow cytometry did not show any significant changes in these
14 populations or their activation status 1 or 7 days after RT (supp. fig. S5). While these data
15 show that there are no changes in these populations after RT at the time points tested,
16 we cannot rule out their role in the priming and activation of the immune response.

17 No significant changes were observed in adhesion molecules VCAM, E-selectin and P-
18 selectin in the non-irradiated parts of the tumor (sup. fig. S6 A,B,C). Blocking E-selectin
19 did not affect the response of the 50% irradiated tumors (supp. fig. S6D).

20
21
22
23
24
25
26
27
28
29
30
31
32
33
34
35
36
37

1

2 **SUPPLEMENTARY FIGURES**

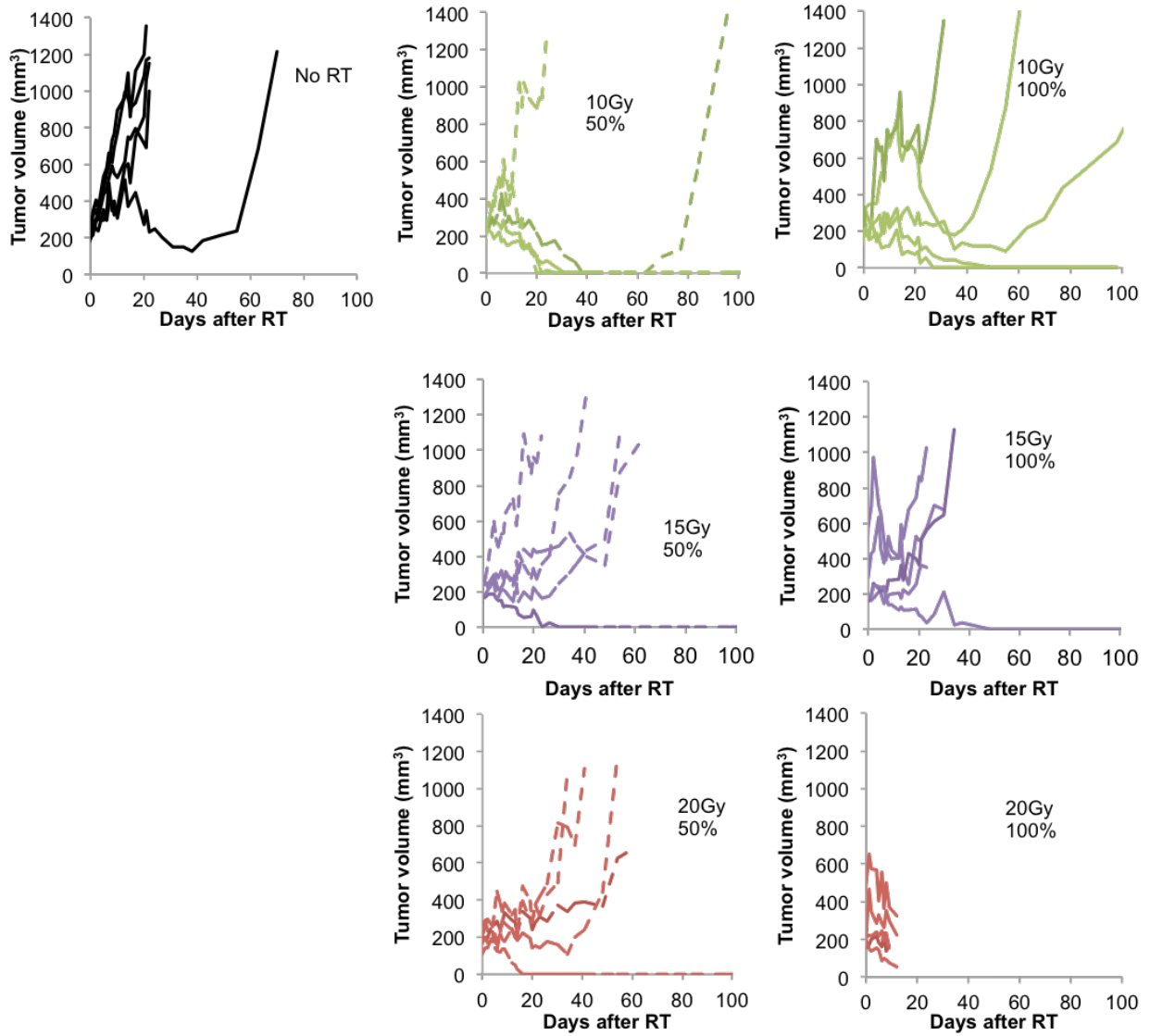


3

4 Supplementary figure S1 - A) Fluoroscope image of mouse with hemi-irradiated tumor: the
5 radiation field is represented by the white square (20 x 20 mm) B) Dose distribution throughout
6 the mouse, as represented by Metropolis

7

1
2
3



4
5

6 **Supplementary figure S2** – Tumor response of 67NR individual tumors implanted in Balb/C
7 mice, fully or hemi-irradiated with 10, 15 or 20Gy. Mean values are shown in Fig. 1A.

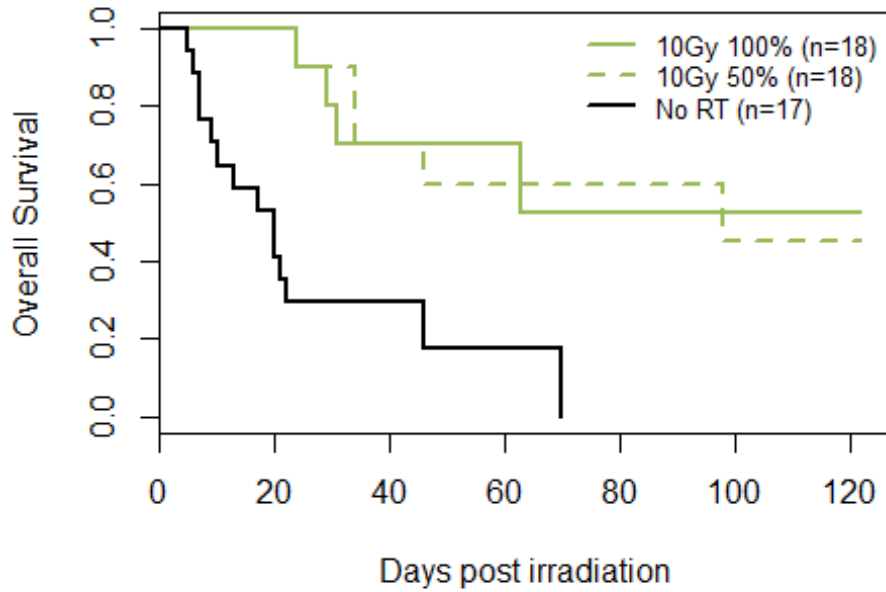
8
9
10
11
12

	N	Events	20-day OS	P
All mice	53	24	0.81 (0.71, 0.92)	
Treatment				<0.001

10Gy 100%	18 (34%)	4	1.00 (1.00, 1.00)
10Gy 50%	18 (34%)	5	1.00 (1.00, 1.00)
No RT	17 (32%)	15	0.41 (0.23, 0.73)

1
2

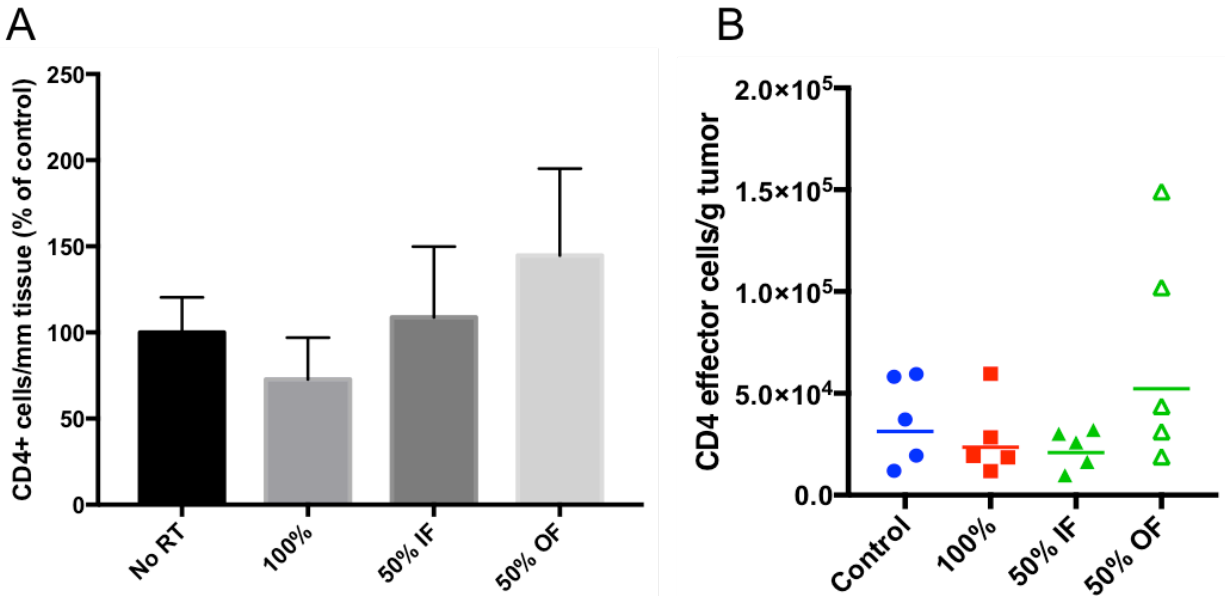
Figure: Overall survival by treatment in Balb/c mice



3
4
5
6
7
8
9
10
11

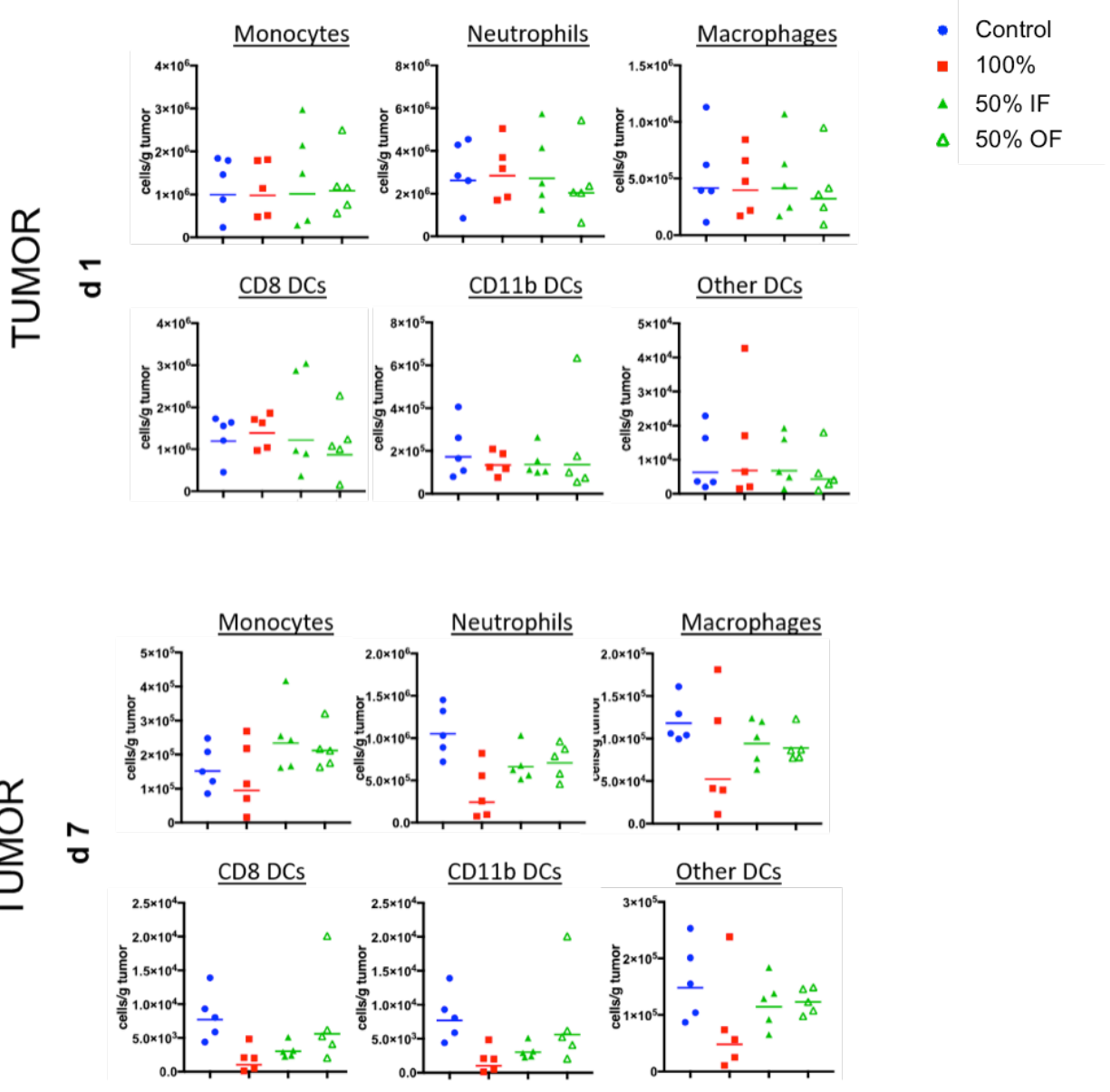
Supplementary figure S2B – Balb/c Treatment group survival analysis

1
2



3
4 **Supplementary figure S3** –Quantification of CD4⁺ cells infiltration in the tumor 24 hours after
5 irradiation with 10Gy. (A) A slight increase in CD4⁺ T cells, that wasn't statistically significant,
6 was observed in non-irradiated half of hemi-irradiated tumors 24 hours after irradiation using
7 immunofluorescence staining. Experiment was done once, with 5 mice per group. (B)
8 Quantification of CD4⁺ cells in the non-irradiated part and irradiated tumors 24 hr post 10Gy RT
9 by flow cytometry. Experiment was done once, with 5 mice per group.

1
2
3

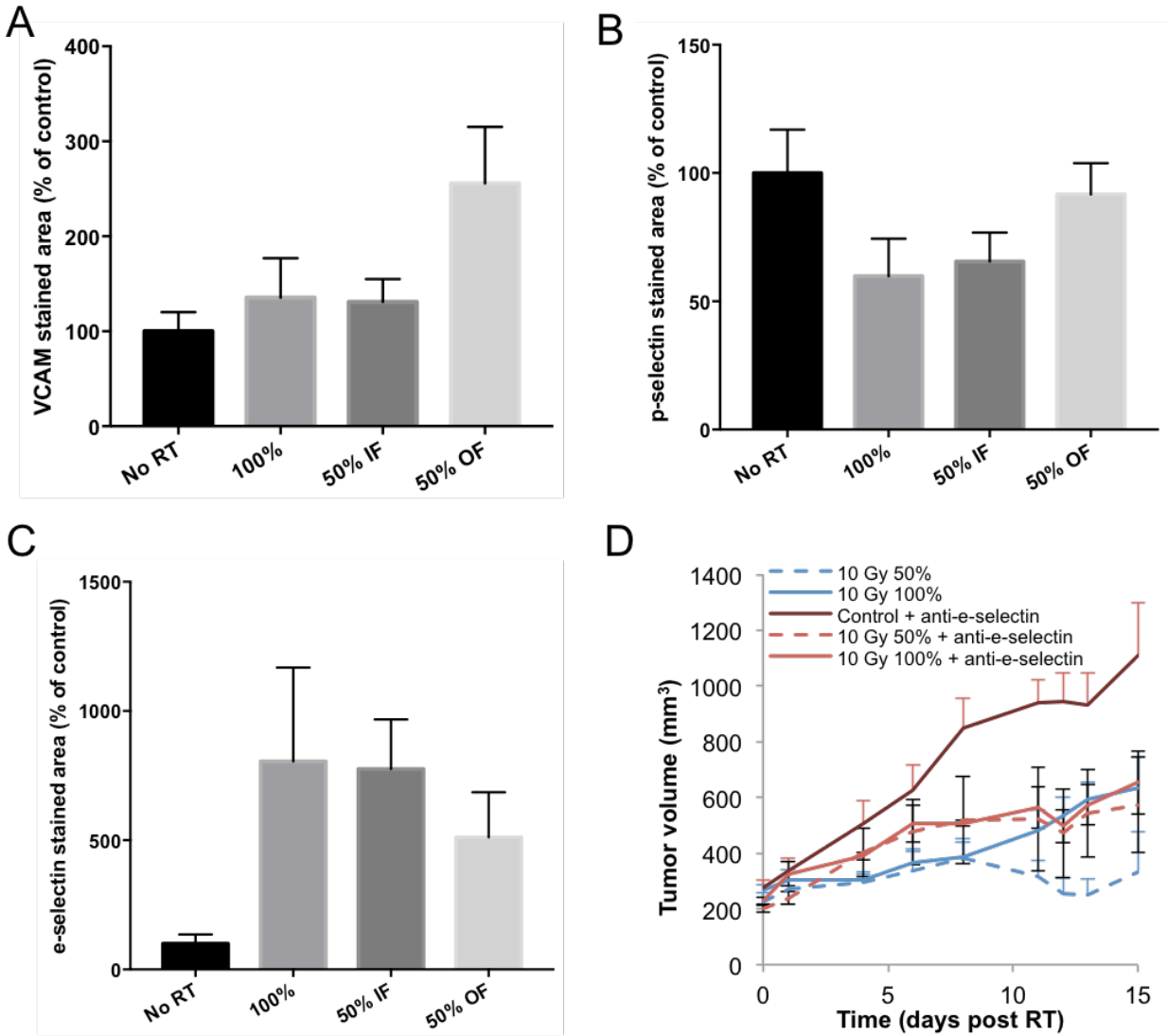


4
5

6 **Supplementary figure S5** - Evaluation of myeloid cells in the tumor by flow cytometry 24 hr post
7 10Gy RT by flow cytometry. Experiment was done once, with 5 mice per group.

8
9
10
11
12
13
14

1
2

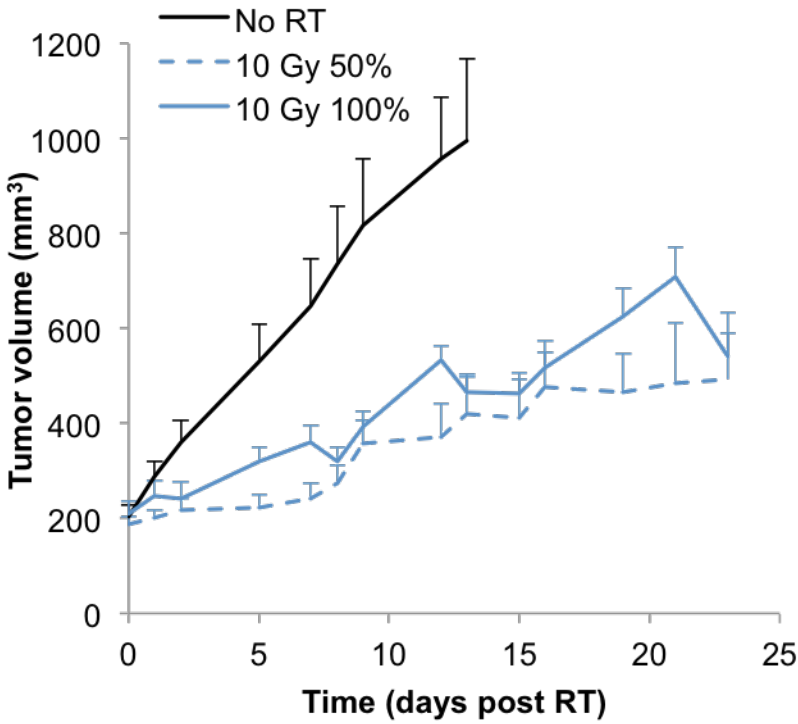


3
4

5 **Supplementary figure S6** - Evaluation of adhesion molecules, VCAM (A), p-selectin (B) and e-
6 selectin (C) in the tumor 24 hours post 10Gy RT. Experiment was done once, with 5 mice per
7 group (D) Tumor response in Balb/c mice bearing orthotopic 67NR breast carcinoma tumors,
8 irradiated with 10Gy on half or all of the tumor area and treated with e-selectin blocking antibody.
9 IP injections on the antibody at a dose of 150µg/injection were administered; 2, 16 and 48 hours
10 after RT. Experiment was done once, with 5 mice per group.

11
12
13
14
15
16

1
2
3



4
5
6
7
8
9
10
11
12
13
14
15
16
17
18
19

Supplementary figure S7 – 67NR orthotopic mammary tumors were hemi-irradiated when the upper part of the tumor was in the irradiation field, unlike other experiments where usually the lower part was irradiated. This change in setup did not affect the response of the hemi-irradiated tumors compared to fully irradiated.

SUMMARY OF STATISTICAL ANALYSIS

Figure 1

Fig1A: Comparison of slopes (trend) between treatment groups

Comparison	Treatment 1 [Median (IQR), Mean (SD)]	Treatment 2 [Median (IQR), Mean (SD)]	P value
No RT vs. 10Gy 50%	No RT: 38.36 (12.13), 32.74 (18.2)	10Gy 50%: -1.88 (5.12), 6.59 (17.72)	0.03
No RT vs. 10Gy 100%	No RT: 38.36 (12.13), 32.74 (18.2)	10Gy 100%: 4.87 (8.4), 6.2 (10.21)	0.06
No RT vs. 15Gy 50%	No RT: 38.36 (12.13), 32.74 (18.2)	15Gy 50%: 10.66 (10.95), 14.82 (13.11)	0.15
No RT vs. 15Gy 100%	No RT: 38.36 (12.13), 32.74 (18.2)	15Gy 100%: 5.74 (23.88), 9.33 (13.21)	0.06
No RT vs. 20Gy 50%	No RT: 38.36 (12.13), 32.74 (18.2)	20Gy 50%: 8.39 (5.95), 9.33 (8.29)	0.1
No RT vs. 20Gy 100%	No RT: 38.36 (12.13), 32.74 (18.2)	20Gy 100%: -5.88 (8.88), -9.01 (8.89)	0.008
10Gy 50% vs. 10Gy 100%	10Gy 50%: -1.88 (5.12), 6.59 (17.72)	10Gy 100%: 4.87 (8.4), 6.2 (10.21)	0.42
10Gy 50% vs. 15Gy 50%	10Gy 50%: -1.88 (5.12), 6.59 (17.72)	15Gy 50%: 10.66 (10.95), 14.82 (13.11)	0.22
10Gy 50% vs. 20Gy 50%	10Gy 50%: -1.88 (5.12), 6.59 (17.72)	20Gy 50%: 8.39 (5.95), 9.33 (8.29)	0.22
10Gy 100% vs. 15Gy 100%	10Gy 100%: 4.87 (8.4), 6.2 (10.21)	15Gy 100%: 5.74 (23.88), 9.33 (13.21)	1
10Gy 100% vs. 20Gy 100%	10Gy 100%: 4.87 (8.4), 6.2 (10.21)	20Gy 100%: -5.88 (8.88), -9.01 (8.89)	0.03

Remarks:

Slope was estimated based on all available measurements for each animal (the maximal measurements from 9 to 122 days post RT) for Fig 1A (Tumor Vol), as well as for measurements for Fig 1B, 2D, 3C, 5A, 5B, and 5C.

Fig1B: Comparison of slopes (trend) between treatment groups

Comparison	Treatment 1 [Median (IQR), Mean (SD)]	Treatment 2 [Median (IQR), Mean (SD)]	P value
No RT vs. 10Gy 50%	No RT: 139.82 (53.05), 157.84 (51.79)	10Gy 50%: 110.62 (1.65), 113.9 (8.57)	0.06
No RT vs. 10Gy 100%	No RT: 139.82 (53.05), 157.84 (51.79)	10Gy 100%: 62.45 (16.09), 61.3 (9.37)	0.02
No RT vs. 15Gy 50%	No RT: 139.82 (53.05), 157.84 (51.79)	15Gy 50%: 96.82 (39.61), 102.59 (32.64)	0.11
No RT vs. 15Gy 100%	No RT: 139.82 (53.05), 157.84 (51.79)	15Gy 100%: 48.16 (43.3), 35.98 (29.51)	0.02
No RT vs. 20Gy 50%	No RT: 139.82 (53.05), 157.84 (51.79)	20Gy 50%: 94.15 (12.68), 95.65 (17.23)	0.02
No RT vs. 20Gy 100%	No RT: 139.82 (53.05), 157.84 (51.79)	20Gy 100%: 13.21 (16.9), 17.23 (11.46)	0.02
10Gy 50% vs. 10Gy 100%	10Gy 50%: 110.62 (1.65), 113.9 (8.57)	10Gy 100%: 62.45 (16.09), 61.3 (9.37)	0.008
10Gy 50% vs. 15Gy 50%	10Gy 50%: 110.62 (1.65), 113.9 (8.57)	15Gy 50%: 96.82 (39.61), 102.59 (32.64)	0.54
10Gy 50% vs. 20Gy 50%	10Gy 50%: 110.62 (1.65), 113.9 (8.57)	20Gy 50%: 94.15 (12.68), 95.65 (17.23)	0.1
10Gy 100% vs. 15Gy 100%	10Gy 100%: 62.45 (16.09), 61.3 (9.37)	15Gy 100%: 48.16 (43.3), 35.98 (29.51)	0.1
10Gy 100% vs. 20Gy 100%	10Gy 100%: 62.45 (16.09), 61.3 (9.37)	20Gy 100%: 13.21 (16.9), 17.23 (11.46)	0.008

Fig1D: Comparison of raw γH2AX foci measurements between treatment groups

Comparison	Treatment 1 [Median (IQR), Mean (SD)]	Treatment 2 [Median (IQR), Mean (SD)]	P value
No RT vs. 10Gy 50% no RT	No RT: 0.47 (0.59), 0.75 (0.59)	10Gy 50% no RT: 0.84 (0.27), 0.89 (0.29)	0.42
10Gy 50% vs. 10Gy 50% no RT	10Gy 50%: 9.1 (3.48), 11.41 (4.02)	10Gy 50% no RT: 0.84 (0.27), 0.89 (0.29)	0.03
10Gy 100% vs. 10Gy 50%	10Gy 100%: 13.09 (10.11), 12.48 (6.59)	10Gy 50%: 9.1 (3.48), 11.41 (4.02)	1
No RT vs. 20Gy 50% no RT	No RT: 0.47 (0.59), 0.75 (0.59)	20Gy 50% No RT: 0.75 (0.24), 0.99 (0.92)	0.69
20Gy 50% vs. 20Gy 50% no RT	20Gy 50%: 13.69 (10.26), 15.38 (13.18)	20Gy 50% No RT: 0.75 (0.24), 0.99 (0.92)	0.008
20Gy 100% vs. 20Gy 50%	20Gy 100%: 14.06 (20.72), 17.29 (11.74)	20Gy 50%: 13.69 (10.26), 15.38 (13.18)	0.84

1 **Figure 2**

2 Fig2A: Comparison of raw measurements between treatment groups: immunofluorescence staining of
 3 CD8+ cells

Comparison	Treatment 1 [Median (IQR), Mean (SD)]	Treatment 2 [Median (IQR), Mean (SD)]	P value
No RT vs. 10Gy 100%	No RT: 93.5 (42), 100.05 (46.4)	10Gy 100%: 161 (143), 170.71 (130.57)	0.03
No RT vs. 10Gy 50%	No RT: 93.5 (42), 100.05 (46.4)	10Gy 50%: 146 (136), 198.29 (160.35)	0.01
No RT vs. 10Gy 50% no RT	No RT: 93.5 (42), 100.05 (46.4)	10Gy 50% No RT: 232 (187), 302.38 (222.19)	<0.0001
10Gy 50% vs. 10Gy 50% no RT	10Gy 50%: 146 (136), 198.29 (160.35)	10Gy 50% No RT: 232 (187), 302.38 (222.19)	0.03

4
 5 Fig2D: Comparison of slopes (trend) between treatment groups

Comparison	Treatment 1 [Median (IQR), Mean (SD)]	Treatment 2 [Median (IQR), Mean (SD)]	P value
No RT vs. 10Gy 50%	No RT: 94.06 (17.46), 79.46 (31.56)	10Gy 50%: 15.45 (10.97), 14.92 (11.75)	0.03
No RT vs. 10Gy 100%	No RT: 94.06 (17.46), 79.46 (31.56)	10Gy 100%: 9.18 (22.91), 13.15 (18.14)	0.03
No RT anti CD8 vs. 10Gy 50% anti CD8	No RT anti CD8: 151.87 (89.68), 142.02 (71.95)	10Gy 50% anti CD8: 110.1 (35.22), 123.94 (42.6)	0.84
No RT anti CD8 vs. 10Gy 100% anti CD8	No RT anti CD8: 151.87 (89.68), 142.02 (71.95)	10Gy 100% anti CD8: 72.61 (12.07), 63.62 (20.31)	0.1
No RT vs. No RT anti CD8	No RT: 94.06 (17.46), 79.46 (31.56)	No RT anti CD8: 151.87 (89.68), 142.02 (71.95)	0.11
10Gy 50% vs. 10Gy 100%	10Gy 50%: 15.45 (10.97), 14.92 (11.75)	10Gy 100%: 9.18 (22.91), 13.15 (18.14)	1
10Gy 50% anti CD8 vs. 10Gy 100% anti CD8	10Gy 50% anti CD8: 110.1 (35.22), 123.94 (42.6)	10Gy 100% anti CD8: 72.61 (12.07), 63.62 (20.31)	0.008
10Gy 50% vs. 10Gy 50% anti CD8	10Gy 50%: 15.45 (10.97), 14.92 (11.75)	10Gy 50% anti CD8: 110.1 (35.22), 123.94 (42.6)	0.008
10Gy 100% vs. 10Gy 100% anti CD8	10Gy 100%: 9.18 (22.91), 13.15 (18.14)	10Gy 100% anti CD8: 72.61 (12.07), 63.62 (20.31)	0.02

6
 7 **Figure 3**

8 Fig3B: Comparison of raw measurements between treatment groups

Comparison	Treatment 1 [Median (IQR), Mean (SD)]	Treatment 2 [Median (IQR), Mean (SD)]	P value
No RT vs. 10Gy 100%	No RT: 102.61 (50.18), 100 (34.27)	10Gy 100%: 181.32 (141.31), 176.79 (87.28)	0.02
No RT vs. 10Gy 50%	No RT: 102.61 (50.18), 100 (34.27)	10Gy 50%: 148.88 (79.76), 176.07 (101.08)	0.005
No RT vs. 10Gy 50% no RT	No RT: 102.61 (50.18), 100 (34.27)	10Gy 50% no RT: 201.92 (103.15), 233.32 (101.53)	<0.0001
10Gy 50% vs. 10Gy 50% no RT	10Gy 50%: 148.88 (79.76), 176.07 (101.08)	10Gy 50% no RT: 201.92 (103.15), 233.32 (101.53)	0.06

9
 10
 11
 12
 13
 14
 15
 16
 17
 18
 19
 20
 21
 22
 23
 24
 25

1 Fig3C: Comparison of slopes (trend) between treatment groups

Comparison	Treatment 1 [Median (IQR), Mean (SD)]	Treatment 2 [Median (IQR), Mean (SD)]	P value
No RT vs. 10Gy 100%	No RT: 72.93 (62.2), 85.72 (51.31)	10Gy 100%: 9.69 (18.59), 3.62 (11.25)	0.008
No RT vs. 10Gy 50%	No RT: 72.93 (62.2), 85.72 (51.31)	10Gy 50%: 7.41 (21.3), 11.29 (13.17)	0.03
No RT anti-ICAM vs. 10Gy 50% anti-ICAM	No RT anti-ICAM: 52.64 (114.68), 75.08 (63.35)	10Gy 50% anti-ICAM: 46.79 (5.16), 44.83 (13.6)	0.84
No RT anti-ICAM vs. 10Gy 100% anti-ICAM	No RT anti-ICAM: 52.64 (114.68), 75.08 (63.35)	10Gy 100% anti-ICAM: -4.7 (7.44), 0.06 (15.39)	0.03
No RT vs. No RT anti-ICAM	No RT: 72.93 (62.2), 85.72 (51.31)	No RT anti-ICAM: 52.64 (114.68), 75.08 (63.35)	0.84
10Gy 50% vs. 10Gy 100%	10Gy 50%: 7.41 (21.3), 11.29 (13.17)	10Gy 100%: 9.69 (18.59), 3.62 (11.25)	0.54
10Gy 50% anti-ICAM vs. 10Gy 100% anti-ICAM	10Gy 50% anti-ICAM: 46.79 (5.16), 44.83 (13.6)	10Gy 100% anti-ICAM: -4.7 (7.44), 0.06 (15.39)	0.02
10Gy 50% vs. 10Gy 50% anti-ICAM	10Gy 50%: 7.41 (21.3), 11.29 (13.17)	10Gy 50% anti-ICAM: 46.79 (5.16), 44.83 (13.6)	0.02
10Gy 100% vs. 10Gy 100% anti-ICAM	10Gy 100%: 9.69 (18.59), 3.62 (11.25)	10Gy 100% anti-ICAM: -4.7 (7.44), 0.06 (15.39)	0.84

2
3
4 Fig3D: Comparison of raw measurements between treatment groups

Comparison	Treatment 1 [Median (IQR), Mean (SD)]	Treatment 2 [Median (IQR), Mean (SD)]	P value
No RT vs. 10Gy 100%	No RT: 104 (23), 100 (43.83)	10Gy 100%: 169 (23.5), 167.33 (63.49)	0.12
No RT vs. 10Gy 50%	No RT: 104 (23), 100 (43.83)	10Gy 50%: 167 (64.5), 163.5 (64.83)	0.13
No RT vs. 10Gy 50% no RT	No RT: 104 (23), 100 (43.83)	10Gy 50% no RT: 232.5 (66.25), 220 (56.7)	0.008
10Gy 50% vs. 10Gy 50% no RT	10Gy 50%: 167 (64.5), 163.5 (64.83)	10Gy 50% no RT: 232.5 (66.25), 220 (56.7)	0.14
No RT anti-ICAM vs. 10Gy 100% anti-ICAM	No RT anti-ICAM: 36 (26.75), 33.67 (16.74)	10Gy 100% anti-ICAM: 140 (38.5), 140 (41.48)	0.005
No RT anti-ICAM vs. 10Gy 50% anti-ICAM	No RT anti-ICAM: 36 (26.75), 33.67 (16.74)	10Gy 50% anti-ICAM: 100 (112), 120.8 (124.59)	0.23
No RT anti-ICAM vs. 10Gy 50% anti-ICAM no RT	No RT anti-ICAM: 36 (26.75), 33.67 (16.74)	10Gy 50% anti-ICAM no RT: 65 (43.75), 74.17 (54.61)	0.06
10Gy 50% anti-ICAM vs. 10Gy 50% anti-ICAM no RT	10Gy 50% anti-ICAM: 100 (112), 120.8 (124.59)	10Gy 50% anti-ICAM no RT: 65 (43.75), 74.17 (54.61)	0.93
10Gy 50% no RT vs. 10Gy 50% anti-ICAM no RT	10Gy 50% no RT: 232.5 (66.25), 220 (56.7)	10Gy 50% anti-ICAM no RT: 65 (43.75), 74.17 (54.61)	0.01
No RT vs. No RT anti-ICAM	No RT: 104 (23), 100 (43.83)	No RT anti-ICAM: 36 (26.75), 33.67 (16.74)	0.03

5
6
7
8
9
10

1 **Figure 4**

2 Fig4A: Comparison of slopes between treatment groups IN THE FIRST SEVEN DAYS

Comparison	Treatment 1 [Median (IQR), Mean (SD)]	Treatment 2 [Median (IQR), Mean (SD)]	P value
No RT vs. 10Gy 50%	No RT: 46.57 (20.37), 51.91 (27.35)	10Gy 50%: 12.53 (14.86), 13.6 (14.94)	0.003
No RT vs. 10Gy 100%	No RT: 46.57 (20.37), 51.91 (27.35)	10Gy 100%: 6.89 (15.85), 10.99 (19.34)	0.008
No RT FTY vs. 10Gy 50 FTY%	No RT FTY: 86.18 (29.92), 74.63 (36.33)	10Gy 50% FTY: 15.14 (12.42), 13.79 (9.54)	0.007
No RT FTY vs. 10Gy 100 FTY%	No RT FTY: 86.18 (29.92), 74.63 (36.33)	10Gy 100% FTY: 7.59 (6.37), 9.2 (13.71)	0.008
No RT vs. No RT FTY	No RT: 46.57 (20.37), 51.91 (27.35)	No RT FTY: 86.18 (29.92), 74.63 (36.33)	0.23
10Gy 50% vs. 10Gy 100%	10Gy 50%: 12.53 (14.86), 13.6 (14.94)	10Gy 100%: 6.89 (15.85), 10.99 (19.34)	0.73
10Gy 50 FTY% vs. 10Gy 100 FTY%	10Gy 50% FTY: 15.14 (12.42), 13.79 (9.54)"	10Gy 100% FTY: 7.59 (6.37), 9.2 (13.71)	0.24
10Gy 50% vs. 10Gy 50 FTY%	10Gy 50%: 12.53 (14.86), 13.6 (14.94)	10Gy 50% FTY: 15.14 (12.42), 13.79 (9.54)"	0.8
10Gy 100% vs. 10Gy 100 FTY%	10Gy 100%: 6.89 (15.85), 10.99 (19.34)	10Gy 100% FTY: 7.59 (6.37), 9.2 (13.71)	0.8

3
4 Fig4A: Comparison of slopes between treatment groups AFTER THE FIRST SEVEN DAYS

Comparison	Treatment 1 [Median (IQR), Mean (SD)]	Treatment 2 [Median (IQR), Mean (SD)]	P value
No RT vs. 10Gy 50%	No RT: 11.93 (23.88), 16.59 (27.91)	10Gy 50%: -7.19 (16.75), -3.54 (10.23)	0.23
No RT vs. 10Gy 100%	No RT: 11.93 (23.88), 16.59 (27.91)	10Gy 100%: -11.36 (12.67), -6.13 (13.77)	0.1
No RT FTY vs. 10Gy 50 FTY%	No RT FTY: 153.67 (57.57), 141.65 (88.4)	10Gy 50% FTY: 42.41 (31.2), 46.78 (24.26)"	0.03
No RT FTY vs. 10Gy 100 FTY%	No RT FTY: 153.67 (57.57), 141.65 (88.4)	10Gy 100% FTY: 43.91 (41.16), 50.2 (31.58)	0.03
No RT vs. No RT FTY	No RT: 11.93 (23.88), 16.59 (27.91)	No RT FTY: 153.67 (57.57), 141.65 (88.4)	0.02
10Gy 50% vs. 10Gy 100%	10Gy 50%: -7.19 (16.75), -3.54 (10.23)	10Gy 100%: -11.36 (12.67), -6.13 (13.77)	0.51
10Gy 50 FTY% vs. 10Gy 100 FTY%	10Gy 50% FTY: 42.41 (31.2), 46.78 (24.26)"	10Gy 100% FTY: 43.91 (41.16), 50.2 (31.58)	0.59
10Gy 50% vs. 10Gy 50 FTY%	10Gy 50%: -7.19 (16.75), -3.54 (10.23)	10Gy 50% FTY: 42.41 (31.2), 46.78 (24.26)"	<0.001
10Gy 100% vs. 10Gy 100 FTY%	10Gy 100%: -11.36 (12.67), -6.13 (13.77)	10Gy 100% FTY: 43.91 (41.16), 50.2 (31.58)	<0.001

5
6
7 **Figure 5**

8
9 Fig5A: Comparison of slopes (trend) between treatment groups

Comparison	Treatment 1 [Median (IQR), Mean (SD)]	Treatment 2 [Median (IQR), Mean (SD)]	P value
No RT vs. 15Gy 50%	No RT: 118.64 (13.18), 122.12 (13.01))	15Gy 50%: 12.6 (18.47), 16.47 (15.39)	0.02
No RT vs. 15Gy 100%	No RT: 118.64 (13.18), 122.12 (13.01))	15Gy 100%: 5.63 (7.06), 6.44 (7.62)	0.02
No RT vs. 20Gy 50%	No RT: 118.64 (13.18), 122.12 (13.01))	20Gy 50%: 87.97 (25.22), 96.47 (42.9)	0.19
No RT vs. 20Gy 100%	No RT: 118.64 (13.18), 122.12 (13.01))	20Gy 100%: -4.46 (1.73), 1.71 (13.93)	0.02
15Gy 50% vs. 15Gy 100%	15Gy 50%: 12.6 (18.47), 16.47 (15.39)	15Gy 100%: 5.63 (7.06), 6.44 (7.62)	0.42
15Gy 50% vs. 20Gy 50%	15Gy 50%: 12.6 (18.47), 16.47 (15.39)	20Gy 50%: 87.97 (25.22), 96.47 (42.9)	0.008
15Gy 100% vs. 20Gy 100%	15Gy 100%: 5.63 (7.06), 6.44 (7.62)	20Gy 100%: -4.46 (1.73), 1.71 (13.93)	0.15

10
11
12

1 **Fig5B: Comparison of slopes (trend) between treatment groups**

Comparison	Treatment 1 [Median (IQR), Mean (SD)]	Treatment 2 [Median (IQR), Mean (SD)]	P value
No RT vs. 15Gy 50%	No RT: 197.41 (56.46), 201.92 (85.29)	15Gy 50%: -6.44 (34.16), 7.23 (22.23)	0.008
No RT vs. 15Gy 100%	No RT: 197.41 (56.46), 201.92 (85.29)	15Gy 100%: 15.39 (23.6), 13.95 (17.4)	0.008
No RT anti CD8 vs. 15Gy 50% anti CD8	No RT anti CD8: 121.27 (50.6), 127.68 (39.89)	15Gy 50% anti CD8: 77.66 (13.04), 79.8 (11.88)	0.008
No RT anti CD8 vs. 15Gy 100% anti CD8	No RT anti CD8: 121.27 (50.6), 127.68 (39.89)	15Gy 100% anti CD8: 60.1 (82.28), 80.45 (49.88)	0.22
No RT vs. No RT anti CD8	No RT: 197.41 (56.46), 201.92 (85.29)	No RT anti CD8: 121.27 (50.6), 127.68 (39.89)	0.22
15Gy 50% vs. 15Gy 100%	15Gy 50%: -6.44 (34.16), 7.23 (22.23)	15Gy 100%: 15.39 (23.6), 13.95 (17.4)	0.69
15Gy 50% vs. 15Gy 50% anti CD8	15Gy 50%: -6.44 (34.16), 7.23 (22.23)	15Gy 50% anti CD8: 77.66 (13.04), 79.8 (11.88)	0.008
15Gy 100% vs. 15Gy 100% anti CD8	15Gy 100%: 15.39 (23.6), 13.95 (17.4)	15Gy 100% anti CD8: 60.1 (82.28), 80.45 (49.88)	0.008

2
3
4 **Fig5C: Comparison of slopes (trend) between treatment groups**

Comparison	Treatment 1 [Median (IQR), Mean (SD)]	Treatment 2 [Median (IQR), Mean (SD)]	P value
No RT vs. 15Gy 50%	No RT: 197.41 (56.46), 201.92 (85.29)	15Gy 50%: -6.44 (34.16), 7.23 (22.23)	0.008
No RT vs. 15Gy 100%	No RT: 197.41 (56.46), 201.92 (85.29)	15Gy 100%: 15.39 (23.6), 13.95 (17.4)	0.008
No RT anti-ICAM vs. 15Gy 50% anti-ICAM	No RT anti ICAM: 127.49 (57.34), 123.7 (32.64)	15Gy 50% anti ICAM: 55.44 (19.33), 57.18 (26.69)	0.03
No RT anti-ICAM vs. 15Gy 100% anti-ICAM	No RT anti ICAM: 127.49 (57.34), 123.7 (32.64)	15Gy 100% anti ICAM: 4.93 (7.3), 10.68 (16.56)	0.008
No RT vs. No RT anti-ICAM	No RT: 197.41 (56.46), 201.92 (85.29)	No RT anti ICAM: 127.49 (57.34), 123.7 (32.64)	0.1
15Gy 50% vs. 15Gy 100%	15Gy 50%: -6.44 (34.16), 7.23 (22.23)	15Gy 100%: 15.39 (23.6), 13.95 (17.4)	0.69
15Gy 50% anti-ICAM vs. 15Gy 100% anti-ICAM	15Gy 50% anti ICAM: 55.44 (19.33), 57.18 (26.69)	15Gy 100% anti ICAM: 4.93 (7.3), 10.68 (16.56)	0.02
15Gy 50% vs. 15Gy 50% anti-ICAM	15Gy 50%: -6.44 (34.16), 7.23 (22.23)	15Gy 50% anti ICAM: 55.44 (19.33), 57.18 (26.69)	0.03
15Gy 100% vs. 15Gy 100% anti-ICAM	15Gy 100%: 15.39 (23.6), 13.95 (17.4)	15Gy 100% anti ICAM: 4.93 (7.3), 10.68 (16.56)	0.69

5
6
7
8 **Figure 6**

Fig6 Comparison of slopes (trend) between treatment groups

Comparison	Treatment 1 [Median (IQR), Mean (SD)]	Treatment 2 [Median (IQR), Mean (SD)]	P value
No RT Left vs. 10Gy 50% Left	No RT Left: 52.08 (19.95), 61.09 (31)	10Gy 50% Left: 48.22 (28.99), 36.76 (28.83)	0.046
No RT Left vs. 10Gy 100% Left	No RT Left: 52.08 (19.95), 61.09 (31)	10Gy 100% left: 29.1 (24.49), 34.31 (27.22)	0.189
10Gy 50% Left vs. 10Gy 100% Left	10Gy 50% Left: 48.22 (28.99), 36.76 (28.83)"	10Gy 100% left: 29.1 (24.49), 34.31 (27.22)	0.846
No RT vs. 10Gy 50%	No RT: 62.12 (33.04), 82.02 (46.33)	10Gy 50%: 6.35 (16.91), 7.41 (16.45)	<0.001
No RT vs. 10Gy 100%	No RT: 62.12 (33.04), 82.02 (46.33)	10Gy 100%: 5.42 (11.68), 4.95 (14.35)	0.015
10Gy 50% vs. 10Gy 100%	10Gy 50%: 6.35 (16.91), 7.41 (16.45)	10Gy 100%: 5.42 (11.68), 4.95 (14.35)	0.842

9
10
11