

Supplemental material

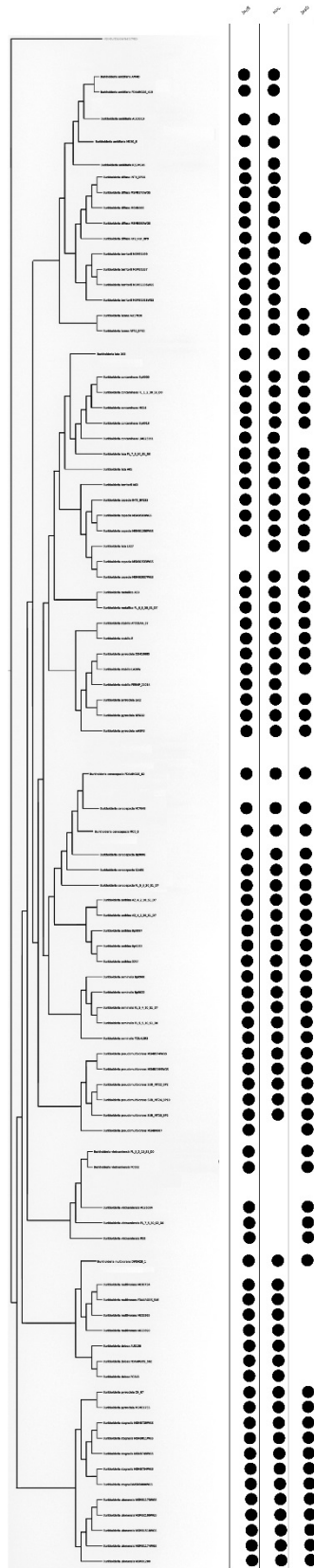


Figure S1. *Burkholderia cepacia* complex (Bcc) whole-genome phylogram of representative genomes showing the distribution of class B, C and D β -lactamases using the composition vector method.

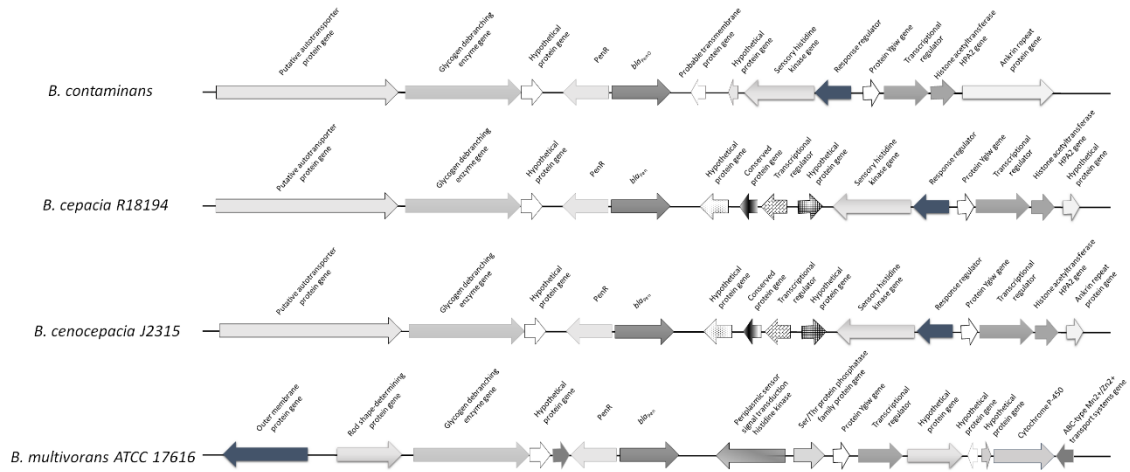


Figure S2. Genetic context of *bla*_{Pen} genes. Arrows represent the direction of transcription.

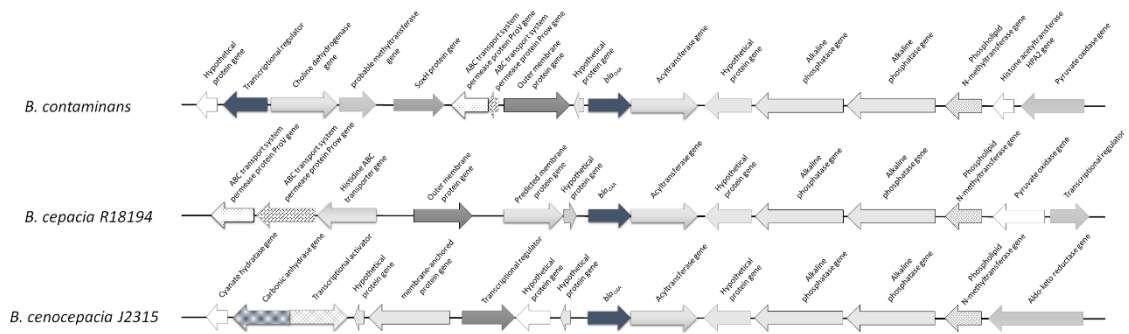


Figure S3. Genetic environment of *bla*_{OXA-like}. Arrows represent the direction of transcription.

Table S1 Primers used in this study

Primer	Purpose	Sequence (3' to 5')	Product size (bp)
<i>bla</i> _{PenO} F ext	<i>bla</i> _{PenO} cloning	CAGCCTAGGGCAAAGGTGCCGAC	1429
<i>bla</i> _{PenO} F ext	<i>bla</i> _{PenO} cloning	CGCGGATCGCGTCACGCACGTCTCG	1429
<i>bla</i> _{PenO} F int	<i>bla</i> _{PenO} PCR	CGTCGAACCCTGTTGCTGGCC	768
<i>bla</i> _{PenO} R int	<i>bla</i> _{PenO} PCR	GTCGCCGGTGCCCGTCTTGTC	768
<i>bla</i> _{OXA-like} F	<i>bla</i> _{OXA-like} PCR	GATGCCACCCGATCTGTAC	496
<i>bla</i> _{OXAlike} R	<i>bla</i> _{OXA-like} PCR	CTCGGTCATGTCGTATGCGT	496