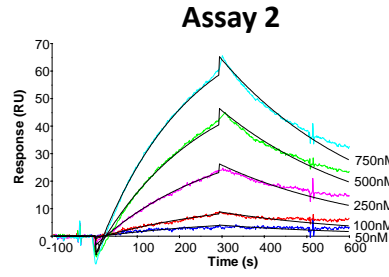
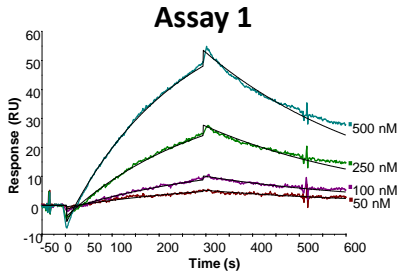
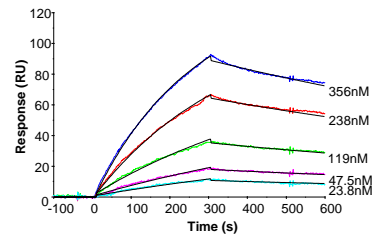
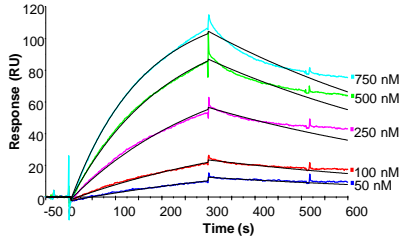


### CH505TF SOSIP.664 v4.1\_G458Y/GnT1-



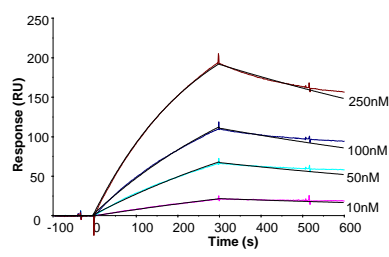
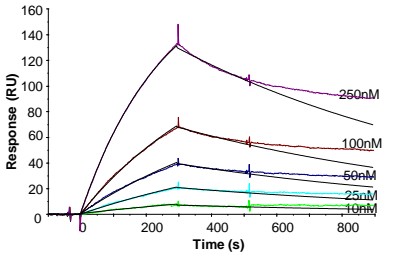
G458Y/GnT1-			
	$K_a$ ( $M^{-1}s^{-1}$ )	$k_d$ ( $s^{-1}$ )	$K_D$ (nM)
Assay 1	$0.32 \times 10^4$	$26 \times 10^{-4}$	822
Assay 2	$0.24 \times 10^4$	$28 \times 10^{-4}$	1170
Average			996

### CH505TF SOSIP.664 v4.1\_N279K/293F



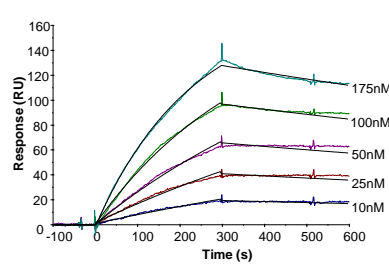
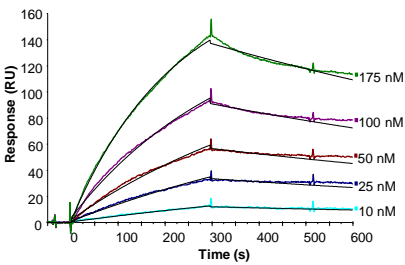
N279K/293F			
	$K_a$ ( $M^{-1}s^{-1}$ )	$k_d$ ( $s^{-1}$ )	$K_D$ (nM)
Assay 1	$0.66 \times 10^4$	$15 \times 10^{-4}$	231
Assay 2	$0.91 \times 10^4$	$7 \times 10^{-4}$	77
Average			154

### CH505TF SOSIP.664 v4.1\_N279K.G458Y/293F



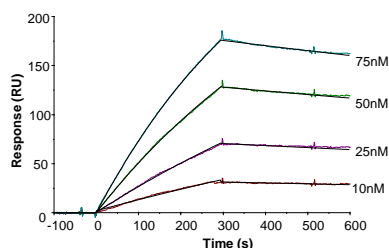
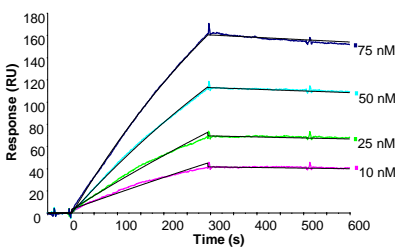
N279K.G458Y/293F			
	$K_a$ ( $M^{-1}s^{-1}$ )	$k_d$ ( $s^{-1}$ )	$K_D$ (nM)
Assay 1	$1.17 \times 10^4$	$10 \times 10^{-4}$	89
Assay 2	$1.20 \times 10^4$	$9 \times 10^{-4}$	77
Average			83

### CH505TF SOSIP.664 v4.1\_N279K/GnT1-



N279K/GnT1-			
	$K_a$ ( $M^{-1}s^{-1}$ )	$k_d$ ( $s^{-1}$ )	$K_D$ (nM)
Assay 1	$1.18 \times 10^4$	$8 \times 10^{-4}$	35
Assay 2	$2.25 \times 10^4$	$4 \times 10^{-4}$	20
Average			28

### CH505TF SOSIP.664 v4.1\_N279K.G458Y/GnT1-



N279K.G458Y/GnT1-			
	$K_a$ ( $M^{-1}s^{-1}$ )	$k_d$ ( $s^{-1}$ )	$K_D$ (nM)
Assay 1	$2.29 \times 10^4$	$1 \times 10^{-4}$	6
Assay 2	$2.70 \times 10^4$	$3 \times 10^{-4}$	11
Average			9